

N.T.S. 32D05

**Rock Sample Report (2014)
Tannahill Property
Tannahill & Holloway Township's, Ontario**

**For
Brandy Brook Mines Limited
8901 Reily Drive
Mount Brydges, Ontario**

**By: Robert Dillman of Arjadee Prospecting
Brandy Brook Mines Limited**

December 13, 2014

INDEX

	page
Summary	2
Location, Access	3
Claim Ownership and Logistics	3
Land Status and Topography	3
Regional Geology	7
History of Exploration and Mineralization	7
Survey Dates and Personnel	17
Survey Logistics	17
Survey Results	23
Discussion of Results	26
Conclusions and Recommendations	27
Certificate of Author	28
References	29
Figure 1. PROPERTY LOCATION MAP	4
Figure 2. CLAIM MAP – SURVEY LOCATION MAP	5
Figure 3. REGIONAL GEOLOGY MAP	8
Figure 4. GEOLOGY MAP: NORTH SECTION OF PROPERTY	9
Figure 5. ROCK SAMPLE SITE, CLAIM 4255937	18
Figure 6. ALTERED CHERT? AND BASALT OUTCROP	19
Figure 7. ALTERED CHERT?	20
Figure 8. ALTERED CHERT? ROCK SAMPLE	21
Figure 9. SHEARED, CARBONATED OUTCROP	22
Figure 10. NICKEL-COPPER SULPHIDES IN GABBRO	24
Figure 11. GAGNE-ST. AMANT PROSPECT	25
Table 1. Claim Logistics	6
Table 2. Geological Stratigraphic Section	10
Table 3. Rock Sample Locations, Descriptions and Assay Results (2014)	13
APPENDIX	
ASSAY CERTIFICATES	32
ASSAY RECIEPTS	33
MAPS	
Rock Sample Location Map, North Sheet; scale 1: 2,500	
Rock Sample Location Map, Northwest Sheet; scale 1: 2,500	

Summary

This report summarizes the mineralogy and analytical results for rock samples collected on the Tannahill Property located in Tannahill and Holloway Township's, Ontario. The rock samples were collected in September and October, 2014 during a geological survey covering the north section of the property. Recent clear cut logging activities have significantly improved the access to the property. Although outcrop exposure is rare, the recent logging activities have uncovered several new outcrops on the property. During the geological survey a total of 28 rock samples were collected. All rock samples were analyzed for gold. Two samples were assayed for silver, copper, nickel, platinum, palladium and path finder elements such as tellurium and bismuth. The best gold assays include: 992 ppb Au, 659 ppb Au and 653 ppb Au. All three samples were selected from sheared and carbonated rocks discovered in the northwest section of claim 4255937.

Location, Access

The Tannahill Property is located in the Harker-Holloway area of the Larder Lake Mining Division in Ontario (Figure 1). The property straddles the township boundary between Holloway and Tannahill Township's.

The property has several access points via logging roads connecting with Highway 672. Most of the roads however, are overgrown and access can only be made by ATV. At the time of this survey, a bridge had been constructed over a small creek to support logging operations in the area. As a result, a truck can be driven into the south section of the property. The bridge is scheduled to be removed later this year.

Claim Ownership and Logistics

The Tannahill Property consists of eight contiguous unpatented mining claims covering a total area of 1,376 hectares (Figure 2). Currently, claim 4251294 which was allowed to come open has been re-staked and is in the process of being recorded. The logistics of the claims are summarized in Table 1. All claims are registered in the name of Brandy Brook Mines Limited of Mount Brydges, Ontario.

Land Status and Topography

The property is situated entirely on Crown Land. There are no people living on the property and there are no building structures.

Most of the property has been logged at various times over the last decade. Most recent logging operations occurred in the past winter. There are new clear-cut areas including the area covered by this survey. Most of the older logged areas have been reforested with small spruce. Isolated dense patches of untouched old-growth forest grow along the boundaries of the waterways crossing the property. These areas contain spruce, pine, tamarack, birch, poplar, ash and alders.

The property is crossed by the Magusi River which flows north towards Lake Abitibi. The river generally flows slowly and is navigable by canoe. There are several sections with short rapids. A small creek flows northeast across the central section of the survey area and drains into the Magusi River.

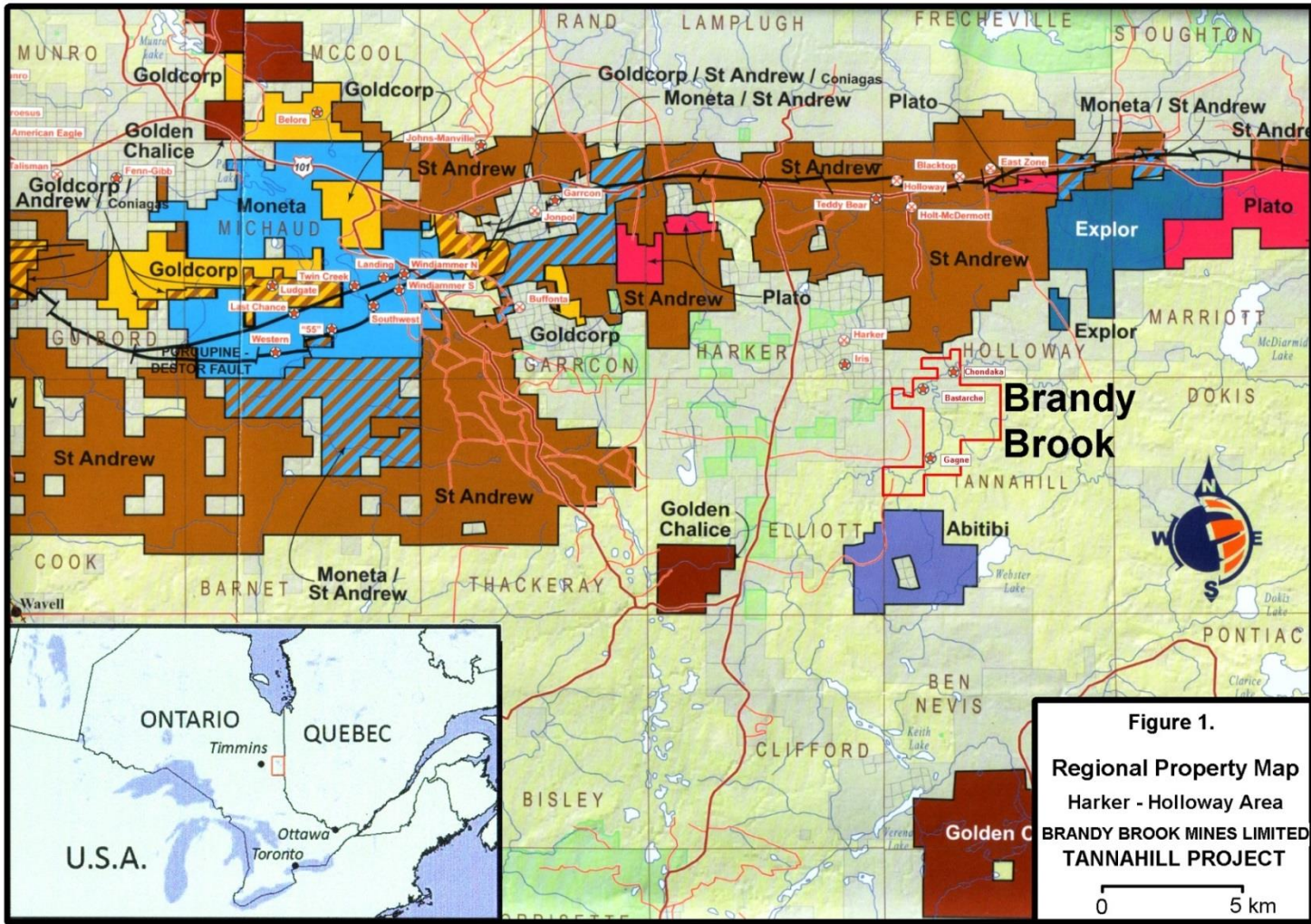


Figure 1.
Regional Property Map
Harker - Holloway Area
BRANDY BROOK MINES LIMITED
TANNAHILL PROJECT

0 5 km

Table 1. Claim Logistics
Tannahill Property
Tannahill & Holloway Twp.'s, Ontario
G-3717
Brandy Brook Mines Limited
December, 2014

Claim Number	Township	Number of Units	Date Recorded	Work Due Date	\$ Amount Due	Banked Reserve \$
4266634	Holloway	8	Nov. 14, 2011	Nov. 14, 2015	\$2,172	\$0
4251297	Tannahill	16	Nov. 26, 2009	Nov. 26, 2015	\$6,400	\$105
4255937	Tannahill	11	Nov. 14, 2011	Nov. 14, 2015	\$4,400	\$801
Work Report Pending						
4263100	Tannahill	12	Oct. 31, 2011	Oct. 31, 2015	\$4,800	\$0
4264181	Tannahill	4	Oct. 31, 2011	Oct. 31, 2015	\$1,600	\$0
4267469	Tannahill	3	Oct. 31, 2011	Oct. 31, 2015	\$1,200	\$0
4273168	Tannahill	12	Dec. 21, 2012	Dec. 21, 2014	\$4,800	\$302
Work Report Pending						
4273169	Tannahill	12	Dec. 21, 2012	Dec. 21, 2014	\$4,041	\$0

Most of the property is covered with thick overburden consisting of clay till. Outcrop exposure is less than 5%. Most outcrops are found south and east of the Magusi River and in the south section of the property.

Regional Geology

The Tannahill Property is located in the Harker-Holloway section of the Abitibi Greenstone Belt. The property straddles the unconformity between Archean units of the Upper and Lower Blake River formation dated 2704 to 2696 Ma (Figure 3).

Exposed outcrops are rare on the property. Outcrops consist mostly of flow and pillowed basalts, variolitic and amygdaloidal mafic metavolcanic flows, flow-top breccia and gabbro (Figure 4). The stratigraphy of the rock units is summarized in Table 2. Rock units generally trend northeast-southwest and dip moderately towards the south. A long, north-south orientated diabase dike crosses the central region of the property.

The property is crossed by east-west and northeast-southwest trending faults associated with south branches of the Destor-Porcupine Fault. Rock units in the north section of the property are extensively carbonated and schistose as a result of shearing. Rock units on the property have been metamorphosed to greenschist facies.

History of Exploration and Mineralization

In 1981, prospectors G. Bastarache and A. Mathias reported low gold values in sheared mafic metavolcanic rock and feldspar porphyry dikes.

In 1982, Canamax Resources Inc. completed a four hole -647 metre drill program proximal to the Bastarache-Mathias Showing. Low gold values were reported.

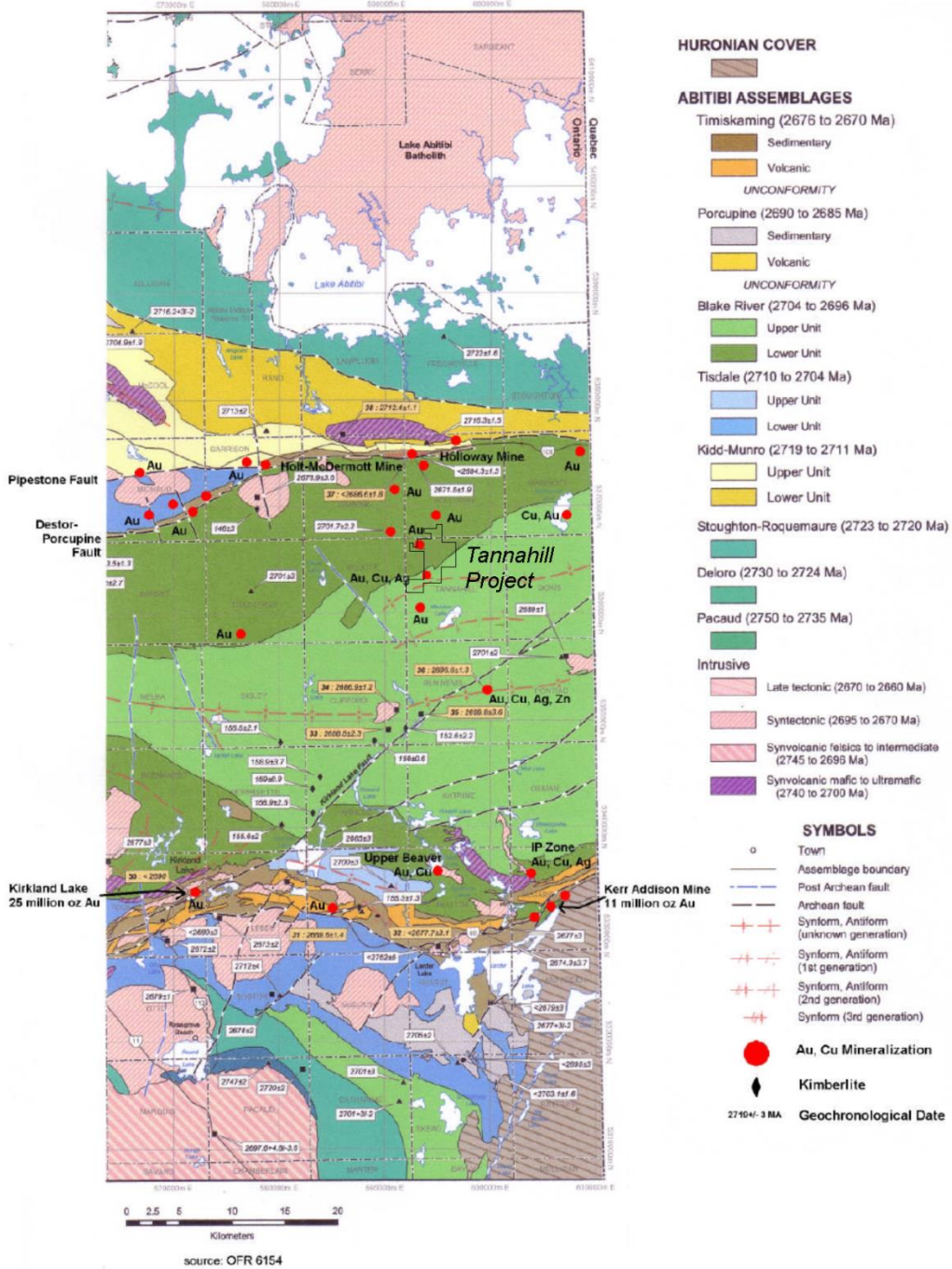


Figure 3.
Regional Geology
Tannahill Project
Tannahill - Holloway Twp. Ontario
Brandy Brook Mines Limited

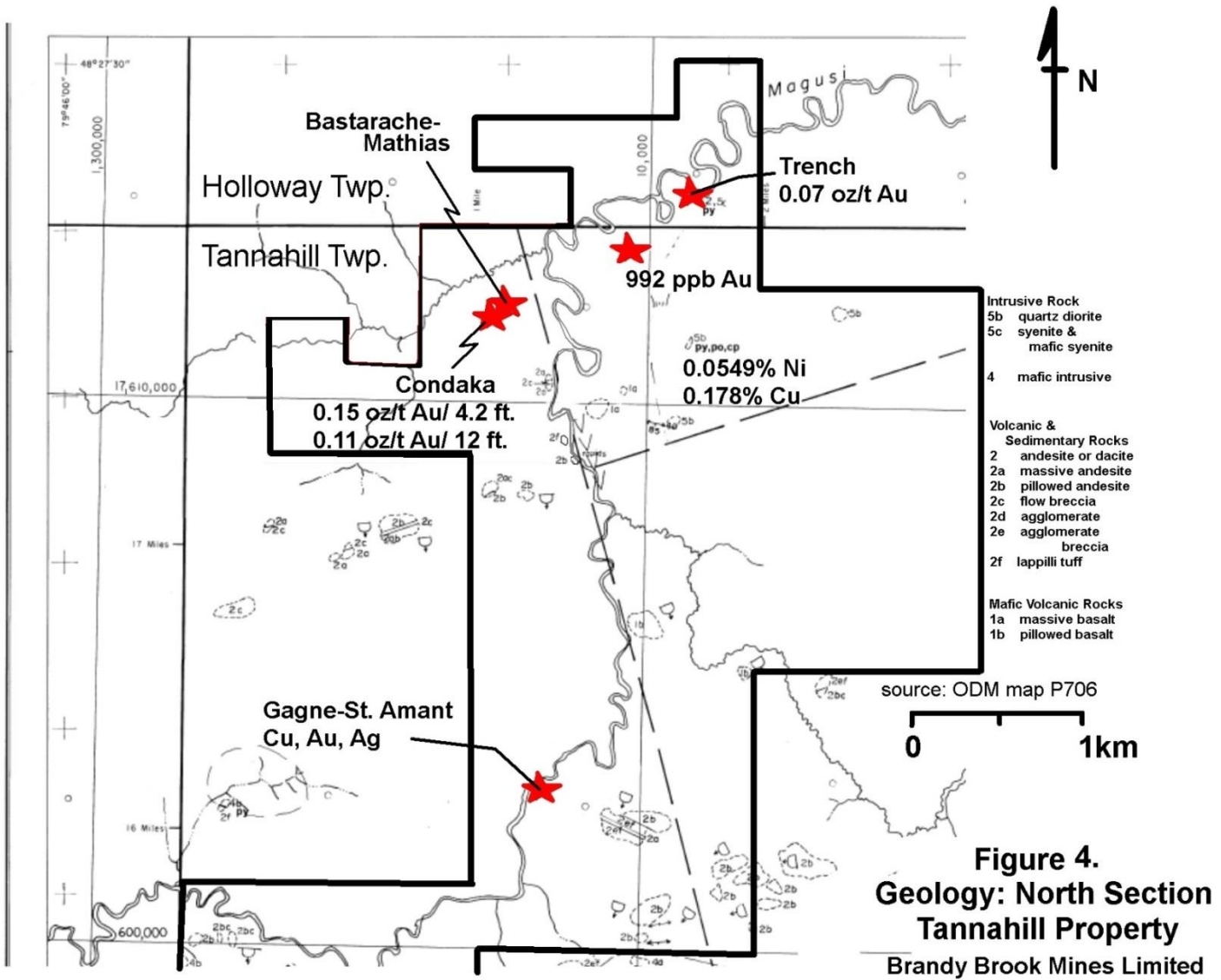


Table 2.
Stratigraphic Sequence: Tannahill Property, Tannahill and Holloway Twp.'s, Ontario
Brandy Brook Mines Limited

LEGEND

CENOZOIC

PLEISTOCENE AND RECENT

Sand, gravel, clay, swamp

Unconformity

PRECAMBRIAN

PROTEROZOIC

KEWEENAWAN

Diabase (dikes)

ARCHEAN

FELSIC INTRUSIVE ROCKS

Granite, diorite, porphyry dikes

Intrusive Contact

MAFIC INTRUSIVE ROCKS

Gabbro, diorite, anorthosite

Intrusive Contact

VOLCANIC AND SEDIMENTARY ROCKS

FELSIC VOLCANIC ROCKS

Rhyolite, feldspar porphyry, tuff

INTERMEDIATE VOLCANIC AND SEDIMENTARY ROCKS

Andesite, dacite, flow-breccia, agglomerate, lapilli tuff, argillite, variolitic andesite

MAFIC VOLCANIC ROCKS

Basalt, andesite, pillowed flows, flow-breccia, amygdaloidal basalt, metamorphosed amphibolite, variolitic basalt or andesite

In 1984, the Bastarache-Mathias property was optioned to Condaka Metals Corp. Over the next 3 years, Condaka completed airborne and ground magnetometer and VLF-EM surveys, mapped geology and completed an 18 hole drill program. Best results reported include: 0.15 oz/ton Au over 4.2 feet in one drill hole and 0.112 oz/ton Au over 12 feet and 0.22 oz/ton Au over 4.0 feet in two parallel holes collared west of the Bastarache-Mathias showing. Condaka reports a value of 0.07 oz/ton Au was obtained from pyrite mineralization exposed in a trench on the south side of the Magusi River.

In 1986, Ted Marion reported an assay of 0.29 oz/ton Au from a small outcrop he located while prospecting along the Magusi River. The outcrop was mineralized with pyrite and chalcopyrite.

In 1987, I. Gagne and A. St. Amant acquired the Marion showing and completed a mechanized trenching and X-ray drill program. They report values ranging: 0.002 to 1.26 oz/ton Au, 0.11 to 0.41 oz/ton Ag and 1.01 to 3.8% Cu. Follow-up X-ray drilling was completed over several years but additional assay results were not reported.

In 1988, the Ontario Geological Survey drilled three separate sonic overburden drill holes on the property. Overburden consisted of multiple layers of till ranging in depth of 29 to 32 metres. Gold grains reported for the holes ranged 9 to 46 grains. Basal till adjacent bedrock contained 4 to 11 gold grains per sample. Assays of heavy mineral concentrates derived from the basal till layers assayed <2 to 1,400 ppb gold and 110 to 120 ppm copper. The best values were obtained from hole 88-42 which also showed anomalous Zn, Fe, Cr, Ti and Ni. A bedrock sample of basalt taken from the bottom of hole 88-42 assayed 135 ppm Cu. The sonic drill hole is situated close to a northeast striking airborne VLF-EM conductor.

In 1994, Strike Minerals Inc. and Findore Minerals Inc. completed a ground magnetometer survey over a circular aeromagnetic feature located in the southeast corner of the property. It has not been confirmed if Strike or Findore drill tested the magnetic feature.

In 1995, Strike Minerals completed a trenching program on the Gagne-St. Amant Prospect. Strike reported assay values of: trace to 583 ppb (0.016 oz/ton) Au, trace to 37.0 ppm (1.01 oz/ton) Ag, 287 to 87,100 ppm (8.71%) Cu and 91 to 1,360 ppm (0.136 %) Zn.

In 2001, Sheldon Larder Mines Limited completed a Mobile Metal Ionization (MMI) survey. Several areas with anomalous gold were detected south and east of the Magusi River.

In 2011, Brandy Brook Mines Limited completed several ground magnetometer and VLF-EM surveys on the property. Targets included the Gagne-St. Amant Prospect and the airborne VLF conductor located in the northeast section of the property. Rocks samples were also collected from the Gagne-St. Amant Prospect. Assays ranged: <0.02 to 1.46 g/t gold, 0.5 to 46.8 g/t silver, 0.007 to 8.61% copper and <0.001 to 0.12% zinc over sample widths of 20 cm or less.

In 2013, Brandy Brook completed a Geo-referencing Survey of the claim post locations on the property. A rock sampling program mostly focused on the Bastarache-Mathias zone was also completed in the fall. Although a trench was located on sheared and carbonated rocks, no significant assays were obtained from the site.

In the fall of 2014, Brandy Brook completed a ground magnetometer and VLF-EM survey over the circular aeromagnetic feature situated in the southeast section of the property. The aeromagnetic feature was previously examined by Strike Minerals Inc. and Findore Minerals Inc. in 1994. The circular magnetic feature is potentially a kimberlite pipe.

Table 3.
Rock Sample Locations, Descriptions and Assay Results (2014)
Tannahill Property
Tannahill and Holloway Twp.'s, Ontario
Brandy Brook Mines Limited
Zone 17, NAD 83

Sample Number	Claim Number	UTM Coordinates	Sample Type	Rock Type	Sample Description	Assay Results
BB-9	4264181	593535mE 5366310mN	Boulder(s) 0.2 x 0.2 x 0.2 m	Altered basalt	Strong carbonate alteration, 5-10% fine disseminated pyrite. 2 cm wide quartz-carbonate stringer	<0.01 g/t Au <10.0 g/t Ag
BB-10	4264181	593536mE 5366310mN	Boulder 0.5 x 0.4 x 0.3 m	Altered basalt	Strong carbonate alteration, weak silicification, tr.-3% fine pyrite. Several boulders on outcrop, possible esker	0.21 g/t Au <10.0 g/t Ag
BB-11	4264181	593534mE 5366279mN	Boulder 0.5 x 0.4 x 0.2 m	Altered basalt	Strong carbonate alteration, moderate silicification, 2 cm wide qtz-carb stringer with 20% pyrite on margin, possible esker	0.03 g/t Au <10.0 g/t Ag
BB-12	4267469	592478mE 5366202mN	Boulder 0.3 x 0.3 x 0.2 m	Gabbro	Gabbro with hairline, randomly orientated epidote stringers. Trace chalcopyrite. On gabbro outcrop.	<0.01 g/t Au <10.0 g/t Ag 597 ppm Cu <0.02 Bi, <0.05 Te
BB-13	4267469	592437mE 5366025mN	Grab, best 0.5 m	Weakly altered basalt	Weakly sheared and carbonated basalt, trace pyrite, shear strike 77 ⁰ , dips 85 ⁰ south	<0.01 g/t Au <10.0 g/t Ag
BB-14	4264181	592676mE 5366573mN	Boulder 1.3 x 1.0 x 0.5 m	Fragmental mafic volcanic	Large boulders on south side hill. Trace pyrite	0.01 g/t Au <10.0 g/t Ag
BB-15	4264181	593687mE 5366685mN	Boulder 0.3 x 0.3 x 0.2 m	Altered basalt	Weakly sheared, qtz-carbonate stringers with traces pyrite and hematite. Several similar boulders at site, close to Bastarche-Mathias outcrop	<0.01 g/t Au <10.0 g/t Ag
BB-16	4264181	593688mE 5366685mN	Boulder 0.3 x 0.3 x 0.2 m	Altered basalt	Weakly sheared, qtz-carbonate stringers with traces pyrite and hematite. Several similar boulders at site, close to Bastarche-Mathias outcrop.	<0.01 g/t Au <10.0 g/t Ag

Table 3. continued
Rock Sample Locations, Descriptions and Assay Results (2014)
Tannahill Property
Zone 17, NAD 83

Sample Number	Claim Number	UTM Coordinates	Sample Type	Rock Type	Sample Description	Assay Results
BB-17	4264181	593688mE 5366685mN	Boulder 0.3 x 0.3 x 0.2 m	Altered basalt	Weakly sheared, qtz-carbonate stringers with traces pyrite and hematite. Several similar boulders at site, close to Bastarache-Mathias outcrop.	0.02 g/t Au <10.0 g/t Ag 168 ppm Cu 0.06 ppm Bi 0.10 ppm Te
BB-18	4255937	593825mE 5366236mN	Grab, Best 0.3 m	Basalt	Quartz-epidote hairline stringers in basalt, traces of chalcopyrite and pyrite	<0.01 g/t Au <10.0 g/t Ag
BB-19	4264181	593627mE 5366660mN	Representative 0.5 m	Sheared Basalt	Moderately sheared and altered basalt with 2-4 cm wide quartz-carbonate in shear Trace pyrite and hematite, Bastarache-Mathias trench	<0.01 g/t Au <10.0 g/t Ag
BB-20	4251297	593853mE 5363950mN	Representative Loose material on outcrop.	Pillowed basalt	Gagne-St.Amant. strong chalcopyrite, malachite, azurite, calcite-quartz-epidote stringers with pyrite	0.14 g/t Au 20.0 g/t Ag >10,000 ppm Cu 0.73 ppm Bi 0.93 ppm Te
BB-21	4251297	593854mE 5363954mN	Representative Loose material on outcrop.	Pillowed basalt	Gagne-St.Amant. strong chalcopyrite and pyrite mineralization, malachite, calcite-quartz-epidote stringers with pyrite	0.03 g/t Au <10.0 g/t Ag >10,000 ppm Cu 0.18 ppm Bi 0.20 ppm Te
BB-22	4255937	594379mE 5367042mN	Representative 0.25 m	Altered chert?	Brecciated and sheared chert? bed, 0.5m wide. Several generations of quartz carbonate stringers. 5% fine disseminated py. Figure 5, Figure 6, Figure 7, Figure 8	239 ppb Au
BB-23	4255937	594379mE 5367042mN	Representative 0.25 m Adjacent to sample BB-22	Altered chert?	Brecciated and sheared chert? bed, 0.5m wide. Several generations of quartz carbonate stringers. 5% fine disseminated py. Figure 5, Figure 6, Figure 7, Figure 8	659 ppb Au
BB-24	4255937	594369mE 5367034mN	Best, grab Rubble outcrop	Altered basalt	Brecciated and sheared basalt with several generations of quartz-carbonated stringers. 5% fine pyrite. Figure 5	653 ppb Au

Table 3. continued
Rock Sample Locations, Descriptions and Assay Results (2014)
Tannahill Property
Zone 17, NAD 83

Sample Number	Claim Number	UTM Coordinates	Sample Type	Rock Type	Sample Description	Assay Results
BB-25	4255937	594369mE 5367035mN	Best, grab Rubble outcrop	Altered basalt	Brecciated and sheared basalt with several generations of quartz-carbonated stringers. 5% fine pyrite. Figure 5	992 ppb Au
BB-26	4255937	594359mE 5367027mN	Representative 12 cm	Quartz- carbonate vein	White quartz-carbonate vein crossing foliation of wallrock. Figure 5, Figure 9	53 ppb Au Rep. 63 ppb Au
BB-27	4255937	594360mE 5367027mN	Best, grab Rubble outcrop	Altered basalt	Brecciated and sheared basalt with several generations of quartz-carbonated stringers. 5% fine py. Figure 5, Figure 9	75 ppb Au
BB-28	4255937	594358mE 5367027mN	Best, grab Rubble outcrop	Altered basalt	Brecciated and sheared basalt with several generations of quartz-carbonated stringers. 5% fine py. Figure 5, Figure 9	45 ppb Au
BB-29	4255937	594330mE 5366205mN	Representative 10 cm	Basalt	Semi massive seam of pyrite. Near flat lying.	10 ppb Au
BB-30	4255937	594330mE 5366205mN	Representative 0.5 m	Basalt	Disseminated to Semi massive pyrite.	14 ppb Au
BB-31	4255937	594742mE 5366473mN	Representative 0.5 m	Gabbro	Coarse gabbro with large subhedral black pyroxene. Trace pyrite in pyroxene. Figure 10.	17 ppb Au 20 ppb Pt 21 ppb Pd
BB-32	4255937	594742mE 5366472mN	Best, selective 2.0 m	Gabbro	Several <5.0 cm wide semi-massive seams of pyrite and possible pentlandite over 2.0 metres. Figure 10	17 ppb Au <10 ppb Pt 9 ppb Pd 32 element ICP 193 ppm Co 1780 ppm Cu 549 ppm Ni
BB-33	4255937	594131mE 5366126mN	Boulder 0.5 x 0.4 x 0.3 m	Altered basalt	Strong carbonate alteration, weak silicification, tr.-3% fine py. Several boulders at base of basalt outcrop.	43 ppb Au

Table 3. continued
Rock Sample Locations, Descriptions and Assay Results (2014)
Tannahill Property
Zone 17, NAD 83

Sample Number	Claim Number	UTM Coordinates	Sample Type	Rock Type	Sample Description	Assay Results
BB-34	4266634	594835mE 5367285mN	Best, grab 2 m	Altered basalt	Weakly sheared basalt with quartz-carbonated stringers. 5% fine disseminated pyrite.	12 ppb Au
BB-35	4266634	594798mE 5367279mN	Best, grab 4 m	Altered basalt	Old trench, Weakly sheared basalt with quartz-carbonated stringers. Traces of pyrite at north end of trench.	20 ppb Au
BB-36	4266634	594775mE 5367268mN	Boulder 0.5 x 0.4 x 0.2 m	Altered basalt	Strong carbonate alteration, moderate silicification, 1 cm wide qtz-carb stringer, 1-5% disseminated pyrite, trace chalcopyrite. Beside trench.	399 ppb Au

Survey Dates and Personnel

Rock samples were collected on the Tannahill Property in a twelve (12) day period between September 17 and October 9, 2014. The rock samples were collected during a geological survey over the north section of the property.

Rock samples were collected by the author of this report, Robert J. Dillman of Mount Brydges, Ontario, James M. Chard of Gem Shard Prospecting of Cordova Mines, Ontario and Dr. Jim Renaud of London, Ontario.

Survey Logistics

Rock sample locations were recorded using a Garmin GPS unit model GPSmap 60CSx. The GPS coordinates coincide with grid NAD83, Zone 17. Sample locations, rock descriptions and assay results are summarized in Table 3. Sample locations and analytical results are shown on the accompanying map at a scale of 1 : 2500 (1 cm = 25 m).

All the rock samples were delivered to SGS Canada Inc. for analysis. The laboratory is located in Lakefield, Ontario. Assay certificates provided by laboratory are appended to this report.

All the rocks samples were analyzed for gold by standard fire assay method. Thirteen of the samples were assayed for silver by standard fire assay method. Four samples were analyzed for copper, bismuth and tellurium by aqua regia dissolution methods finished with Induced Coupled Plasma Mass Spectrometry (ICP-MS). One sample was assayed for 32 elements by aqua regia dissolution/ ICP-MS.

To complete the assays, 3.0 kg of each sample was crushed to 2mm size granules. From this, 250 grams were selected and further pulverized to 75 microns. To complete the fire assays, 30 grams of the 75 micron material were analyzed for gold and silver by lead fission and gravimetric finish. Samples analyzed for multi-elements were digested in a two acid bath and residues were analyzed by ICP-MS.

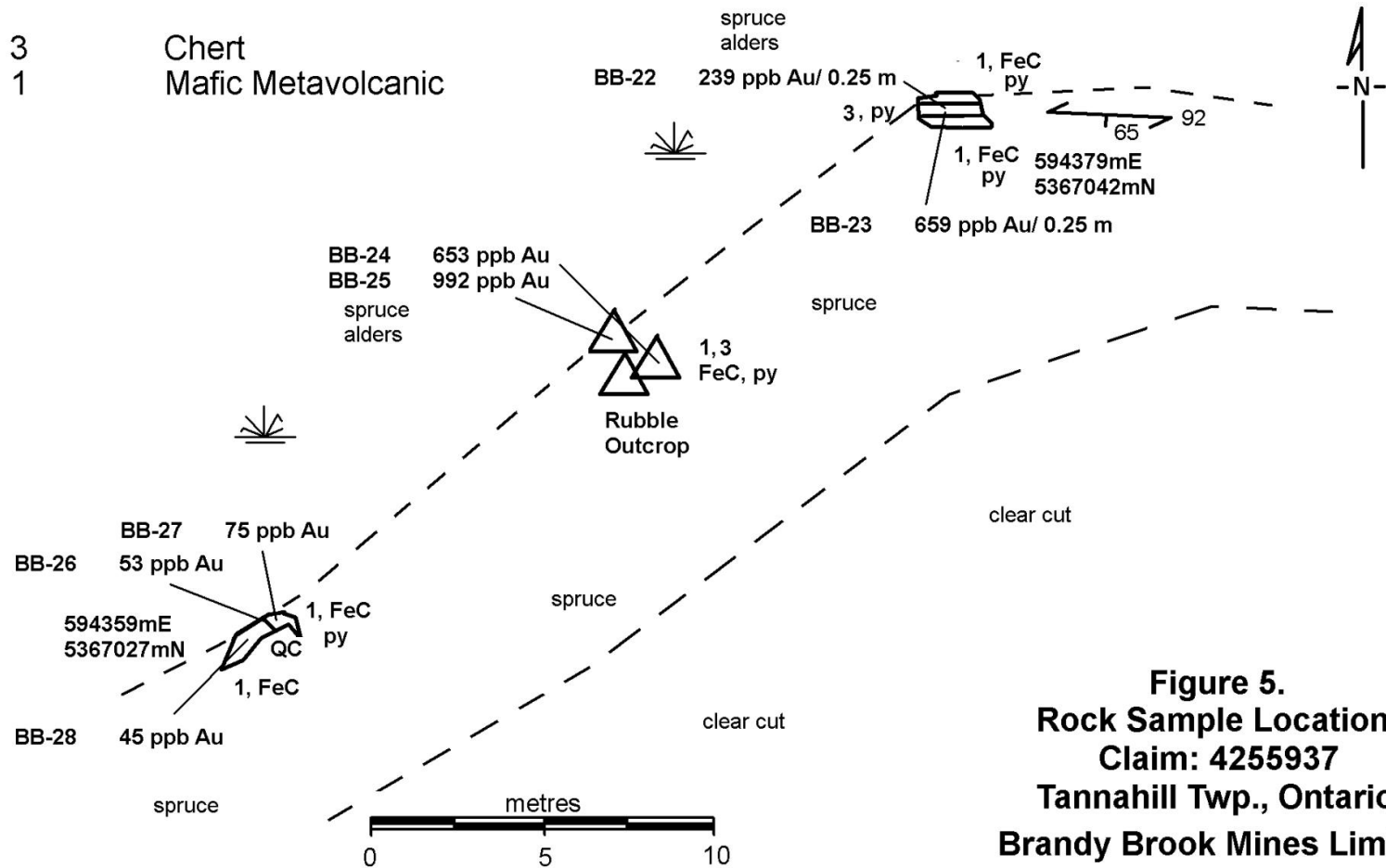
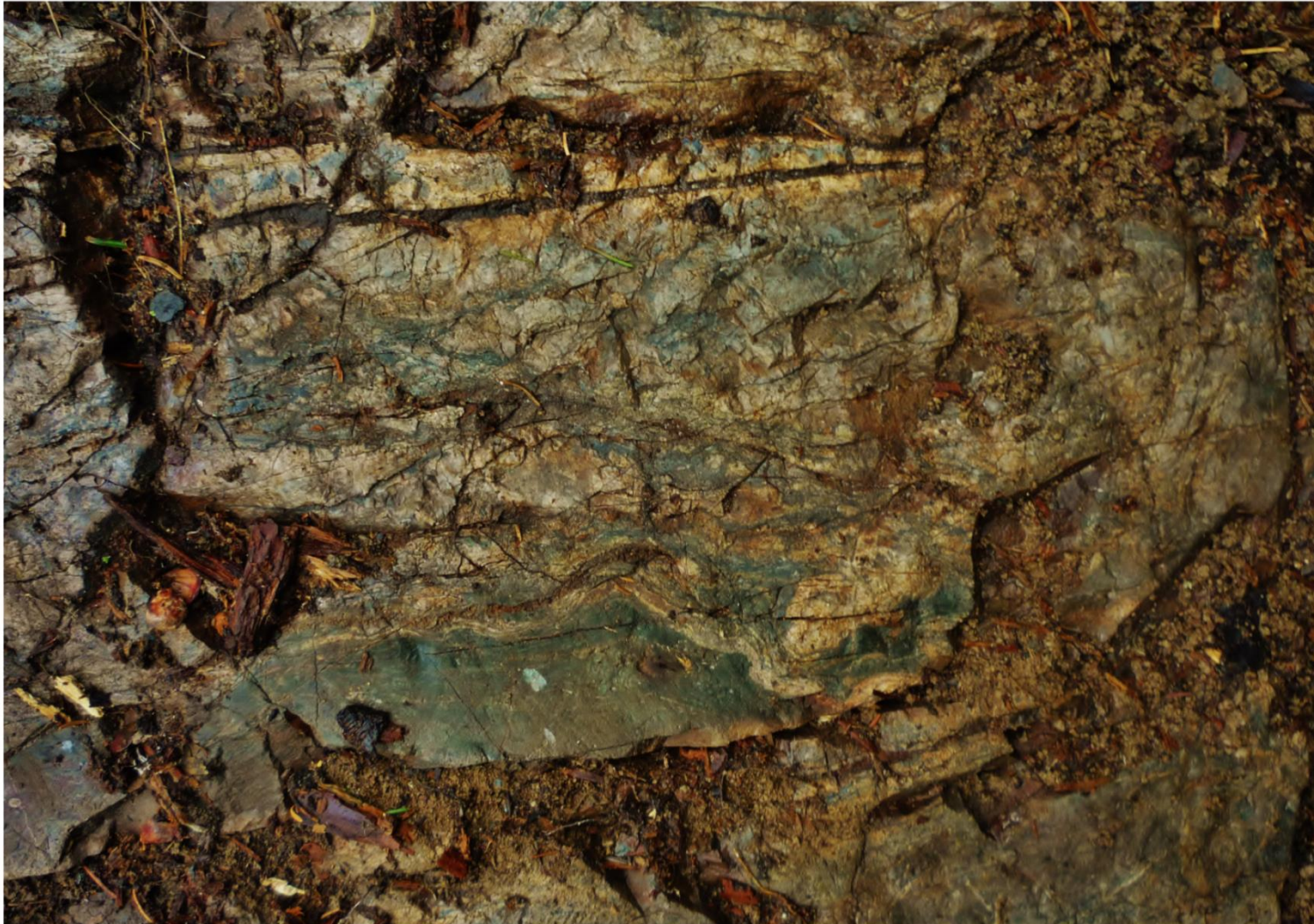




Figure 6: Altered chert? bed in mafic metavolcanics. Claim 4255937
Looking south 594379mE, 5367042mN



**Figure 7. Altered chert? bed in mafic metavolcanic rocks.Claim: 4255937
Looking south. 594379mE, 5367042mN**



**Figure 8. Sheared, brecciated altered chert and basalt , claim 4255937
594379mE, 5367042mN**



**Figure 9. Sheared, carbonated outcrop with quartz-carbonate stringer. 594359mE, 5367027mN
Looking south. Claim 4255937**

Survey Results

Five rock samples return anomalous gold values ranging between 239 ppb to 992 ppb. Of these, four of the samples came from the same area located south of the Holloway-Tannahill township line on claim: 4255937 (Figure 5). The fifth sample assaying 399 ppb gold was collected proximal to a historic trench located on the south side of the Magusi River in claim: 4266634.

Samples collected south of the township line in claim 4255937 which returned anomalous gold values were taken from outcrops of brecciated and carbonate altered mafic metavolcanic rocks and potential chert beds mineralized with disseminated pyrite (Figure 6, Figure 7). The chert beds strike 92° and dip 65° south. The outcrops are cut by several generations of quartz-carbonate stringers. The stringers range from hairline thickness to 10 cm wide (Figure 8). Disseminated pyrite is present in some quartz-carbonate stringers and throughout the wallrock. The latest phase of quartz-carbonate veining appears to cross wallrock foliation and veins are structurally offset with right-handed movement by younger faulting events (Figure 9).

Several boulders of altered basalt were found at the base, on the north side of a large gabbro-basalt outcrop located east of the Magusi River on claim 4255937. The boulders are carbonated and weakly mineralized with pyrite. A sample of one boulder with traces of pyrite returned 43 ppb gold.

Altered mafic metavolcanic boulders were found in an esker located west of the river in claim 4264181. A sample from one of the boulders assayed 0.21 ppb gold.

Anomalous copper values were obtained from several outcrops of gabbro. One of the areas coincides with the sulphide occurrence shown ODM map P706 which is located on claim 4255937 (Figure 4). Several thin veins of semi-massive pyrite and potential pentlandite occur in a 2.5 metre wide area proximal to the contact between medium grained and coarse grained gabbro (Figure 10). The sulphide veins range 5 cm wide and occur within the medium grained gabbro phase. A composite



**Figure 10. Nickel-copper bearing sulphide veins in gabbro.
594742mE, 5366472mN**

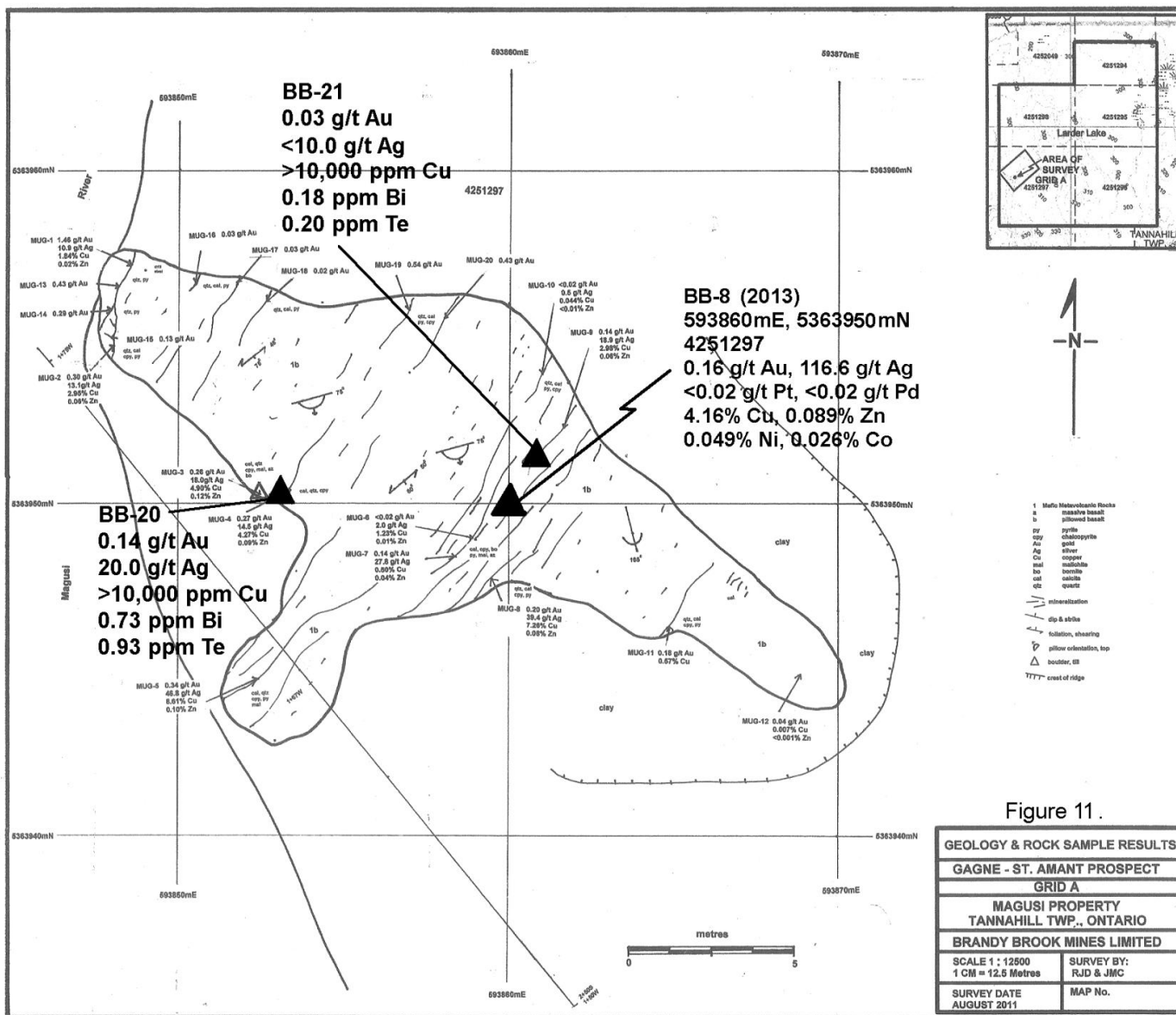


Figure 11.

GEOLOGY & ROCK SAMPLE RESULTS	
GAGNE - ST. AMANT PROSPECT	
GRID A	
MAGUSI PROPERTY	
TANNAHILL TWP., ONTARIO	
BRANDY BROOK MINES LIMITED	
SCALE 1 : 12500	SURVEY BY:
1 CM = 12.5 Metres	RJD & JMC
SURVEY DATE	MAP No.
AUGUST 2011	

sample from the sulphide veins assayed 17 ppb gold, 1,780 ppm copper, 549 ppm nickel, 193 ppm cobalt <10 ppb platinum and 9 ppb palladium. A sample collected from the coarse-grained phase assayed 17 ppb gold, 20 ppb platinum. Fine pyrite occurs as nucleus in large subhedral pyroxene crystals in the coarse grained gabbro.

A boulder of gabbro with hairline epidote-calcite stringers containing traces of chalcopyrite was found on gabbro outcrop exposed in claim 4267469. A sample assayed <0.01 g/t gold, <10.0 g/t silver and 597 ppm copper.

Two samples were collected from chalcopyrite mineralization in the Gagne-St. Amant prospect located on claim 4251297 (Figure 11). Although the area was not part of the recent geological survey, the samples were collected in preparation for petrographic and microprobe examination. Assays for one sample returned 0.14 g/t gold, 20.0 g/t silver, >10,000 ppm copper, 0.73 ppm bismuth and 0.93 ppm telluride. The second sample assayed 0.03 g/t gold, <10 g/t silver, >10,000 ppm copper, 0.18 ppm bismuth and 0.20 ppm telluride.

Discussion of Results

The discovery of gold-bearing sheared outcrops south of the township line in claim 4255937 is considered important because the location is believed to be south of areas historically tested by diamond drilling. The locations of the sheared outcrops are also close to an historic MMI soil anomaly.

The presence of nickel-copper-cobalt mineralization in gabbro is important and creates a new target on the property. The gabbro intrusion is fairly large but poorly exposed however future prospecting should not be deterred.

Conclusion and Recommendations

The recent geological survey and subsequent rock sample program over the north section of the Tannahill Property has led to the discovery of new gold bearing outcrops believed to be part of a large northeast-southwest trending shear zone crossing part or all of the property. The recent survey has also led to the identification of anomalous nickel and copper mineralization in a large gabbro intrusion. Both sites warrant additional investigation in an effort to determine the economic potential. Mechanized trenching is recommended at each site.

Respectfully submitted,

A handwritten signature in black ink, appearing to read 'R. Dillman', is written over a light gray rectangular background.

Robert Dillman B.Sc. P.Geo.

December 13, 2014

Robert J. Dillman P.Geo, B.Sc.
ARJADEE PROSPECTING
8901 Reily Drive, Mount Brydges, Ontario, Canada, N0L1W0
Phone/ fax (519) 264-9278

CERIFICATE of AUTHOR

I, **Robert J. Dillman, Professional Geologist**, do certify that:

1. I am the **President** and the holder of a **Certificate of Authorization** for:

ARJADEE PROSPECTING
8901 Reily Drive
Mount Brydges, Ontario, Canada
N0L1W0

2. I graduated in 1991 with a **Bachelor of Science Degree** in **Geology** at the **University of Western Ontario**.

3. I am an active member of:

Association of Professional Geoscientists of Ontario, APGO
Prospectors and Developers Association of Canada, PDAC
Geological Association of Canada, GAC

4. I have been a **licensed Prospector in Ontario** since 1985.

5. I have worked continuously as a **Professional Geologist** for 24 years.

6. Unless stated otherwise, **I am responsible** for the preparation of all sections of the Assessment Report titled:

Rock Sample Report (2014)
Tannahill Property
Tannahill & Holloway Township's, Ontario

dated, December 13, 2014

7. I am not aware of any material fact or material change with respect to the subject matter of the Assessment Report that is not contained in the Assessment Report and its omission to disclose makes the Assessment Report misleading.

Dated this 13th day of December, 2014



Robert James Dillman P.Geo
Arjadee Prospecting



References

- Ayer, J.A., Thurston, P.C., Bateman, R., Dube', B., Gibson, H.L., Hamilton, M.A., Hathway, B., Hocker, S.M., Houle', M.G., Hudak, G., Ispolatov, V.O., Lafrance, B., Leshner, C.M., MacDonald, P.J., Peloquin, A.S., Piercey, S.J., Reed, L.E. and Thompson, P.H. 2005.** Overview of results from the Greenstone Architecture Project: Discover Abitibi Initiative; Ontario Geological Survey, Open File Report 6154, 146p. File ofr6154.
- Bennet, R.A. and Associates 1987.** Diamond Drill Logs for holes: C-87-1 to 5, Magusi River Project, for:Condaka Metals Corporation. Unpublished assessment report 32D05NE0047
- Berger, B.R., Luinstra, B. and Ropchan, J.C. 1997.** Precambrian Geology: The Highway 101 Area, East of Matheson, Ontario. For: Ontario Geological Survey Map 2676, file M2676.
- Campbell, R.A. 1988.** Report on Combined Airborne Geophysical Survey on the Property of Mr. Y. Gagne, Tannahill Township, Ontario, by H. Ferderber Geophysics; Unpublished assessment report 32D05NE0039.
- Dillman, R.J. 2011.** Report On Ground Magnetometer and VLF-Electromagnetic Surveys GRID A: Tannahill Property, Tannahill Township, Ontario. Unpublished assessment report. For: Brandy Brook Mines Limited.
- Dillman, R.J. 2011.** Report On Ground Magnetometer and VLF-Electromagnetic Surveys GRID B: Tannahill Property, Tannahill Township, Ontario. Unpublished assessment report. For: Brandy Brook Mines Limited.
- Dillman, R.J. 2011.** Report On Heavy Mineral Sampling, Tannahill Property, Tannahill Township, Ontario. Unpublished assessment report. For: Brandy Brook Mines Limited.
- Dillman, R.J. 2014.** Geology Report Claims 4266634 & 4255937, Tannahill Property Tannahill & Holloway Township's, Ontario. Unpublished assessment report. For: Brandy Brook Mines Limited.
- Dillman, R.J. 2014.** Geology Report Claims 4264181, 4267469 & the Southwest Section of 4255937, Tannahill Property, Tannahill & Holloway Township's, Ontario. Unpublished assessment report. For: Brandy Brook Mines Limited.
- Forbes, C.P. 1996.** Report on Stripping and Trenching on the Strike Minerals Inc. Tannahill Township Property, Larder Mining Division. Contains: Report by Alex Bath 1987, Gagne/St. Amant Prospect Tannahill Township, Larder Lake Mining Division. Unpublished assessment report 32D05NE0070.
- Gagne, Y. 1987.** Assay certificates. Gagne-St. Amant Prospect. Unpublished assessment report 32D05NE0036.
- Gagne, Y. 1988.** X-Ray Drill Logs Holes: 3, 4 & 5. Gagne-St. Amant Prospect. Unpublished assessment report 32D05NE0045.
- Gagne, Y. 1989.** X-Ray Drill Logs Holes: 6 & 7. Gagne-St. Amant Prospect. Unpublished assessment report 32D05NE0032.

References continued

- Gagne, Y. 1991.** X-Ray Drill Logs Hole: 8. Gagne-St. Amant Prospect. Unpublished assessment report 32D05NE9358.
- Gagne, Y. 1991.** X-Ray Drill Logs Hole: 9. Gagne-St. Amant Prospect. Unpublished assessment report 32D05NE9357.
- Jenson, L.S. 1971.** Preliminary Geology Map of Tannahill Township, Cochrane District. For: Ontario Geological Survey Map: P.706, file P0706.
- Jenson, L.S. 1972.** Geology Map of Tannahill and Dokis Townships, Cochrane District. For: Ontario Geological Survey Map: 2367, file M2367.
- Jenson, L.S. 1978.** Geology of Thackeray, Elliott, Tannahill and Dokis Townships, Cochrane District. For: Ontario Geological Survey Report 165, file R165.
- Ontario Geological Survey 1984.** Airborne Electromagnetic and Total Intensity Magnetic Survey, Matheson-Black River Area, Tannahill Township, District of Cochrane: by Questor Surveys Limited for the Ontario Geological Survey, Map 80610 Geophysical/Geochemical Series, Scale 1:20 000, Survey and Compilation March to July 1983. File M80610.
- Ontario Geological Survey 1989.** Sonic Drill holes 88-34, 88-35, 88-36 and 88-37, Tannahill Township, District of Cochrane: Ontario Geological Survey, Map 81 163 Geophysical/Geochemical Series, Geology 1988. File M81163.
- Ontario Geological Survey 1989.** Sonic Drill holes 88-41 and 88-42, Tannahill Township, District of Cochrane: Ontario Geological Survey, Map 81 165 Geophysical/Geochemical Series, Geology 1988. File M81165.
- Ontario Geological Survey 2003.** Airborne magnetic and electromagnetic surveys, residual magnetic field and electromagnetic anomalies, Kidd-Munro, Blake River area, Ontario Geological Survey, Map 81 776, Scale 1:20 000. File M81776.
- Ontario Geological Survey 2003.** Airborne magnetic and electromagnetic surveys, residual magnetic field and electromagnetic anomalies, Kidd-Munro, Blake River area, Ontario Geological Survey, Map 81 781, Scale 1:50 000. File M81781.
- Ontario Geological Survey 2003.** Airborne magnetic and electromagnetic surveys. Shaded image of the second vertical derivative of the magnetic field and Keating coefficients. Kidd-Munro, Blake River area, Ontario Geological Survey, Map 81 783, Scale 1:50 000. File M81783.
- Ontario Geological Survey 2003.** Airborne magnetic and electromagnetic surveys. Apparent conductance and electromagnetic anomalies. Kidd-Munro, Blake River area, Ontario Geological Survey, Map 81 785, Scale 1:50 000. File M81785.
- Ontario Geological Survey 2003.** Airborne magnetic and electromagnetic surveys. EM decay constant and electromagnetic anomalies. Kidd-Munro, Blake River area, Ontario Geological Survey, Map 81 787, Scale 1:50 000. File M81787.

References continued

- Scott, F. 1985.** Report on Airborne Geophysical Survey over the Magusi River Property, Holloway and Tannahill Townships, Ontario, for: Condaka Metals Corporation by H. Ferderber Geophysics; Unpublished assessment report 32D05NE0008.
- Webster, B. 1992.** A Logistical and Interpretive Report on VLF-EM, Magnetic and Gravity Surveys on the Diamond Lake Properties, Larder Lake Area, Northeastern Ontario. For: Sudbury Contact Mines Ltd. c/o W.A Hubacheck Consultants Ltd.
- Whelan, J. 1994.** Report on Ground Magnetic Surveys over Strike Minerals Inc./ Findore Minerals Inc. Joint Venture Claim Groups, Tannahill and Ben Nevis Townships, Ontario NTS 32D/5. Unpublished assessment report 32D05NE0066.



Certificate of Analysis

Work Order : LK1400598

[Report File No.: 0000002474]

To: **Robert Dillman**
COD SGS MINERALS
Goldstake Explorations Inc.
R. Dillman
8901 Reily Drive
Mount Brydges ON N0L 1W0

Date: Nov 05, 2014

P.O. No. : Brandy Brook Mines - Tannahill Project
Project No. : -
No. Of Samples : 13
Date Submitted : Oct 01, 2014
Report Comprises : Pages 1 to 2
(Inclusive of Cover Sheet)

Distribution of unused material:

To Be Determined:

Comments:

Preparation of samples was performed at the SGS Lakefield

Certified By :

Debbie Waldon
Project Coordinator

SGS Minerals Services (Lakefield) is accredited by Standards Council of Canada (SCC) and conforms to the requirements of ISO/IEC 17025 for specific tests as indicated on the scope of accreditation to be found at <http://www.scc.ca/en/programs/lab/mineral.shtml>

Report Footer: L.N.R. = Listed not received I.S. = Insufficient Sample
n.a. = Not applicable -- = No result

*INF = Composition of this sample makes detection impossible by this method

M after a result denotes ppb to ppm conversion, % denotes ppm to % conversion

Methods marked with an asterisk (e.g. *NAA08V) were subcontracted

Elements marked with the @ symbol (e.g. @Cu) denote assays performed using accredited test methods

For solid samples: Unless otherwise noted, all GT_ tests are reported on a dried at 105°C basis. Other tests are performed on an as received basis unless otherwise indicated. Exceptions will be marked. For example rec (e.g. Cu rec) indicates the results are reported on an as received basis or dry (e.g. Cu dry) indicates the results are reported on a dried basis.

This document is issued by the Company under its General Conditions of Service accessible at http://www.sgs.com/terms_and_conditions.htm. Attention is drawn to the limitation of liability, indemnification and jurisdiction issues defined therein.

WARNING: The sample(s) to which the findings recorded herein (the "Findings") relate was (were) drawn and / or provided by the Client or by a third party acting at the Client's direction. The Findings constitute no warranty of the sample's representativity of the goods and strictly relate to the sample(s). The Company accepts no liability with regard to the origin or source from which the sample(s) is/are said to be extracted. The findings report on the samples provided by the client and are not intended for commercial or contractual settlement purposes. Any unauthorized alteration, forgery or falsification of the content or appearance of this document is unlawful and offenders may be prosecuted to the fullest extent of the law.

SGS Canada Inc. Mineral Services
185 Concession Street Lakefield ON K0L 2H0 t+1(705) 652-2000 f+1(705) 652-6365 www.ca.sgs.com

Member of the SGS Group (Société Générale de Surveillance)



Report File No. 520702011

Element Method	WtG	@Ag	@Au	Cu	Bi	Te
Detection Limit	G_WGH79	GO_FAG323	GO_FAG323	GE_ICM14B	GE_ICM14B	GE_ICM14B
Units	g	g/t	g/t	ppm	ppm	ppm
B-09	1406.800	<10	<0.01	N.A.	N.A.	N.A.
*Rep B-09		<10	<0.01			
B-10	978.3000	<10	0.21	N.A.	N.A.	N.A.
B-11	995.8000	<10	0.03	N.A.	N.A.	N.A.
B-12	1108.400	<10	<0.01	597	<0.02	<0.05
B-13	1125.100	<10	<0.01	N.A.	N.A.	N.A.
B-14	464.7000	<10	0.01	N.A.	N.A.	N.A.
B-15	1048.400	<10	<0.01	N.A.	N.A.	N.A.
B-16	706.1000	<10	<0.01	N.A.	N.A.	N.A.
B-17	534.2000	<10	0.02	168	0.06	0.10
B-18	1280.500	<10	<0.01	N.A.	N.A.	N.A.
B-19	1270.500	<10	<0.01	N.A.	N.A.	N.A.
B-20	739.7000	20	0.14	>10000	0.73	0.93
B-21	1270.400	<10	0.03	>10000	0.18	0.20
*Rep B-21				>10000	0.19	0.24
*Std OREAS-901				1530	4.51	0.09
*Std SP49_18.34AU_60.2AG		60	18.1			
*Blk BLANK		<10	<0.01	<0.5	<0.02	<0.05

This document is issued by the Company under its General Conditions of Service accessible at http://www.sgs.com/terms_and_conditions.htm. Attention is drawn to the limitation of liability, indemnification and jurisdiction issues defined therein.

WARNING: The sample(s) to which the findings recorded herein (the "Findings") relate was (were) drawn and / or provided by the Client or by a third party acting at the Client's direction. The Findings constitute no warranty of the sample's representativity of the goods and strictly relate to the sample(s). The Company accepts no liability with regard to the origin or source from which the sample(s) is/are said to be extracted. The findings report on the samples provided by the client and are not intended for commercial or contractual settlement purposes. Any unauthorized alteration, forgery or falsification of the content or appearance of this document is unlawful and offenders may be prosecuted to the fullest extent of the law.

SGS Canada Inc. Mineral Services
 185 Concession Street Lakefield ON K0L 2H0 t+1(705) 652-2000 f+1(705) 652-6365 www.ca.sgs.com

Member of the SGS Group (Société Générale de Surveillance)



Certificate of Analysis

Work Order : LK1400644
[Report File No.: 000002669]

To: **Robert Dillman**
COD SGS MINERALS
Goldstake Explorations Inc.
R. Dillman
8901 Reily Drive
Mount Brydges ON N0L 1W0

Date: Nov 26, 2014

P.O. No. : Brandy Brook Mines -
Project No. : -
No. Of Samples : 15
Date Submitted : Oct 16, 2014
Report Comprises : Pages 1 to 6
(Inclusive of Cover Sheet)

Distribution of unused material:

To Be Determined:

Comments:

Exploration Quality Analysis
Email request to analyze sample BB-32 for GE_ICP12B

Certified By :

Debbie Waldon
Project Coordinator

SGS Minerals Services (Lakefield) is accredited by Standards Council of Canada (SCC) and conforms to the requirements of ISO/IEC 17025 for specific tests as indicated on the scope of accreditation to be found at <http://www.scc.ca/en/programs/lab/mineral.shtml>

Report Footer: L.N.R. = Listed not received I.S. = Insufficient Sample
n.a. = Not applicable -- = No result

*INF = Composition of this sample makes detection impossible by this method

M after a result denotes ppb to ppm conversion, % denotes ppm to % conversion

Methods marked with an asterisk (e.g. *NAA08V) were subcontracted

Elements marked with the @ symbol (e.g. @Cu) denote assays performed using accredited test methods

For solid samples: Unless otherwise noted, all GT_ tests are reported on a dried at 105°C basis. Other tests are performed on an as received basis unless otherwise indicated. Exceptions will be marked. For example rec (e.g. Cu rec) indicates the results are reported on an as received basis or dry (e.g. Cu dry) indicates the results are reported on a dried basis.

This document is issued by the Company under its General Conditions of Service accessible at http://www.sgs.com/terms_and_conditions.htm. Attention is drawn to the limitation of liability, indemnification and jurisdiction issues defined therein.

WARNING: The sample(s) to which the findings recorded herein (the "Findings") relate was (were) drawn and / or provided by the Client or by a third party acting at the Client's direction. The Findings constitute no warranty of the sample's representativity of the goods and strictly relate to the sample(s). The Company accepts no liability with regard to the origin or source from which the sample(s) is/are said to be extracted. The findings report on the samples provided by the client and are not intended for commercial or contractual settlement purposes. Any unauthorized alteration, forgery or falsification of the content or appearance of this document is unlawful and offenders may be prosecuted to the fullest extent of the law.

SGS Canada Inc. Mineral Services
185 Concession Street Lakefield ON K0L 2H0 t+1(705) 652-2000 f+1(705) 652-6365 www.ca.sgs.com

Member of the SGS Group (Société Générale de Surveillance)

Element Method	WtKg	@Au	Pd	Pt	@Ag	@Al	@As	@Ba
Detection Limit	G_WGH79	GE_FAI313	GE_FAI313	GE_FAI313	GE_ICP12B	GE_ICP12B	GE_ICP12B	GE_ICP12B
Units	0.001	1	1	10	2	0.01	3	5
	kg	ppb	ppb	ppb	ppm	%	ppm	ppm
BB-22	N.A.	239	N.A.	N.A.	N.A.	N.A.	N.A.	N.A.
BB-23	N.A.	659	N.A.	N.A.	N.A.	N.A.	N.A.	N.A.
BB-24	N.A.	653	N.A.	N.A.	N.A.	N.A.	N.A.	N.A.
BB-25	N.A.	992	N.A.	N.A.	N.A.	N.A.	N.A.	N.A.
BB-26	N.A.	53	N.A.	N.A.	N.A.	N.A.	N.A.	N.A.
*Rep BB-26		63	N.A.	N.A.				
BB-27	N.A.	75	N.A.	N.A.	N.A.	N.A.	N.A.	N.A.
BB-28	N.A.	45	N.A.	N.A.	N.A.	N.A.	N.A.	N.A.
BB-29	N.A.	10	N.A.	N.A.	N.A.	N.A.	N.A.	N.A.
BB-30	N.A.	14	N.A.	N.A.	N.A.	N.A.	N.A.	N.A.
BB-33	N.A.	43	N.A.	N.A.	N.A.	N.A.	N.A.	N.A.
BB-34	N.A.	12	N.A.	N.A.	N.A.	N.A.	N.A.	N.A.
BB-35	N.A.	20	N.A.	N.A.	N.A.	N.A.	N.A.	N.A.
BB-36	N.A.	399	N.A.	N.A.	N.A.	N.A.	N.A.	N.A.
BB-31	N.A.	17	21	20	N.A.	N.A.	N.A.	N.A.
BB-32	N.A.	17	9	<10	<2	3.57	<3	24
*Std CDN-PGMS-24		834	5060	1110				
*Dup BB-29	N.A.	18	N.A.	N.A.	N.A.	N.A.	N.A.	N.A.

This document is issued by the Company under its General Conditions of Service accessible at http://www.sgs.com/terms_and_conditions.htm. Attention is drawn to the limitation of liability, indemnification and jurisdiction issues defined therein.

WARNING: The sample(s) to which the findings recorded herein (the "Findings") relate was (were) drawn and / or provided by the Client or by a third party acting at the Client's direction. The Findings constitute no warranty of the sample's representativity of the goods and strictly relate to the sample(s). The Company accepts no liability with regard to the origin or source from which the sample(s) is/are said to be extracted. The findings report on the samples provided by the client and are not intended for commercial or contractual settlement purposes. Any unauthorized alteration, forgery or falsification of the content or appearance of this document is unlawful and offenders may be prosecuted to the fullest extent of the law.

SGS Canada Inc. Mineral Services
185 Concession Street Lakefield ON K0L 2H0 t+1(705) 652-2000 f+1(705) 652-6365 www.ca.sgs.com

Member of the SGS Group (Société Générale de Surveillance)



Element	@Be	@Bi	@Ca	@Cd	@Co	@Cr	@Cu	@Fe
Method	GE_ICP12B	GE_ICP12B	GE_ICP12B	GE_ICP12B	GE_ICP12B	GE_ICP12B	GE_ICP12B	GE_ICP12B
Detection Limit	0.5	5	0.01	1	1	1	0.5	0.01
Units	ppm	ppm	%	ppm	ppm	ppm	ppm	%
BB-22	N.A.	N.A.	N.A.	N.A.	N.A.	N.A.	N.A.	N.A.
BB-23	N.A.	N.A.	N.A.	N.A.	N.A.	N.A.	N.A.	N.A.
BB-24	N.A.	N.A.	N.A.	N.A.	N.A.	N.A.	N.A.	N.A.
BB-25	N.A.	N.A.	N.A.	N.A.	N.A.	N.A.	N.A.	N.A.
BB-26	N.A.	N.A.	N.A.	N.A.	N.A.	N.A.	N.A.	N.A.
BB-27	N.A.	N.A.	N.A.	N.A.	N.A.	N.A.	N.A.	N.A.
BB-28	N.A.	N.A.	N.A.	N.A.	N.A.	N.A.	N.A.	N.A.
BB-29	N.A.	N.A.	N.A.	N.A.	N.A.	N.A.	N.A.	N.A.
BB-30	N.A.	N.A.	N.A.	N.A.	N.A.	N.A.	N.A.	N.A.
BB-33	N.A.	N.A.	N.A.	N.A.	N.A.	N.A.	N.A.	N.A.
BB-34	N.A.	N.A.	N.A.	N.A.	N.A.	N.A.	N.A.	N.A.
BB-35	N.A.	N.A.	N.A.	N.A.	N.A.	N.A.	N.A.	N.A.
BB-36	N.A.	N.A.	N.A.	N.A.	N.A.	N.A.	N.A.	N.A.
BB-31	N.A.	N.A.	N.A.	N.A.	N.A.	N.A.	N.A.	N.A.
BB-32	<0.5	<5	0.94	<1	193	196	1780	6.90
*Dup BB-29	N.A.	N.A.	N.A.	N.A.	N.A.	N.A.	N.A.	N.A.

This document is issued by the Company under its General Conditions of Service accessible at http://www.sgs.com/terms_and_conditions.htm. Attention is drawn to the limitation of liability, indemnification and jurisdiction issues defined therein.

WARNING: The sample(s) to which the findings recorded herein (the "Findings") relate was (were) drawn and / or provided by the Client or by a third party acting at the Client's direction. The Findings constitute no warranty of the sample's representativity of the goods and strictly relate to the sample(s). The Company accepts no liability with regard to the origin or source from which the sample(s) is/are said to be extracted. The findings report on the samples provided by the client and are not intended for commercial or contractual settlement purposes. Any unauthorized alteration, forgery or falsification of the content or appearance of this document is unlawful and offenders may be prosecuted to the fullest extent of the law.

SGS Canada Inc. Mineral Services
 185 Concession Street Lakefield ON K0L 2H0 t+1(705) 652-2000 f+1(705) 652-6365 www.ca.sgs.com

Member of the SGS Group (Société Générale de Surveillance)

Element Method	@Hg	@K	@La	@Li	@Mg	@Mn	@Mo	@Na
Detection Limit	GE_ICP12B	GE_ICP12B	GE_ICP12B	GE_ICP12B	GE_ICP12B	GE_ICP12B	GE_ICP12B	GE_ICP12B
Units	1	0.01	0.5	1	0.01	2	1	0.01
	ppm	%	ppm	ppm	%	ppm	ppm	%
BB-22	N.A.	N.A.	N.A.	N.A.	N.A.	N.A.	N.A.	N.A.
BB-23	N.A.	N.A.	N.A.	N.A.	N.A.	N.A.	N.A.	N.A.
BB-24	N.A.	N.A.	N.A.	N.A.	N.A.	N.A.	N.A.	N.A.
BB-25	N.A.	N.A.	N.A.	N.A.	N.A.	N.A.	N.A.	N.A.
BB-26	N.A.	N.A.	N.A.	N.A.	N.A.	N.A.	N.A.	N.A.
BB-27	N.A.	N.A.	N.A.	N.A.	N.A.	N.A.	N.A.	N.A.
BB-28	N.A.	N.A.	N.A.	N.A.	N.A.	N.A.	N.A.	N.A.
BB-29	N.A.	N.A.	N.A.	N.A.	N.A.	N.A.	N.A.	N.A.
BB-30	N.A.	N.A.	N.A.	N.A.	N.A.	N.A.	N.A.	N.A.
BB-33	N.A.	N.A.	N.A.	N.A.	N.A.	N.A.	N.A.	N.A.
BB-34	N.A.	N.A.	N.A.	N.A.	N.A.	N.A.	N.A.	N.A.
BB-35	N.A.	N.A.	N.A.	N.A.	N.A.	N.A.	N.A.	N.A.
BB-36	N.A.	N.A.	N.A.	N.A.	N.A.	N.A.	N.A.	N.A.
BB-31	N.A.	N.A.	N.A.	N.A.	N.A.	N.A.	N.A.	N.A.
BB-32	<1	0.04	<0.5	8	3.13	347	3	0.10
*Dup BB-29	N.A.	N.A.	N.A.	N.A.	N.A.	N.A.	N.A.	N.A.

This document is issued by the Company under its General Conditions of Service accessible at http://www.sgs.com/terms_and_conditions.htm. Attention is drawn to the limitation of liability, indemnification and jurisdiction issues defined therein.

WARNING: The sample(s) to which the findings recorded herein (the "Findings") relate was (were) drawn and / or provided by the Client or by a third party acting at the Client's direction. The Findings constitute no warranty of the sample's representativity of the goods and strictly relate to the sample(s). The Company accepts no liability with regard to the origin or source from which the sample(s) is/are said to be extracted. The findings report on the samples provided by the client and are not intended for commercial or contractual settlement purposes. Any unauthorized alteration, forgery or falsification of the content or appearance of this document is unlawful and offenders may be prosecuted to the fullest extent of the law.

SGS Canada Inc. Mineral Services
185 Concession Street Lakefield ON K0L 2H0 t+(705) 652-2000 f+1(705) 652-6365 www.ca.sgs.com

Member of the SGS Group (Société Générale de Surveillance)

Element	@Ni	@P	@Pb	@S	@Sb	@Sc	@Sn	@Sr
Method	GE_ICP12B	GE_ICP12B	GE_ICP12B	GE_ICP12B	GE_ICP12B	GE_ICP12B	GE_ICP12B	GE_ICP12B
Detection Limit	1	0.01	2	0.01	5	0.5	10	5
Units	ppm	%	ppm	%	ppm	ppm	ppm	ppm
BB-22	N.A.	N.A.	N.A.	N.A.	N.A.	N.A.	N.A.	N.A.
BB-23	N.A.	N.A.	N.A.	N.A.	N.A.	N.A.	N.A.	N.A.
BB-24	N.A.	N.A.	N.A.	N.A.	N.A.	N.A.	N.A.	N.A.
BB-25	N.A.	N.A.	N.A.	N.A.	N.A.	N.A.	N.A.	N.A.
BB-26	N.A.	N.A.	N.A.	N.A.	N.A.	N.A.	N.A.	N.A.
BB-27	N.A.	N.A.	N.A.	N.A.	N.A.	N.A.	N.A.	N.A.
BB-28	N.A.	N.A.	N.A.	N.A.	N.A.	N.A.	N.A.	N.A.
BB-29	N.A.	N.A.	N.A.	N.A.	N.A.	N.A.	N.A.	N.A.
BB-30	N.A.	N.A.	N.A.	N.A.	N.A.	N.A.	N.A.	N.A.
BB-33	N.A.	N.A.	N.A.	N.A.	N.A.	N.A.	N.A.	N.A.
BB-34	N.A.	N.A.	N.A.	N.A.	N.A.	N.A.	N.A.	N.A.
BB-35	N.A.	N.A.	N.A.	N.A.	N.A.	N.A.	N.A.	N.A.
BB-36	N.A.	N.A.	N.A.	N.A.	N.A.	N.A.	N.A.	N.A.
BB-31	N.A.	N.A.	N.A.	N.A.	N.A.	N.A.	N.A.	N.A.
BB-32	549	<0.01	3	3.62	<5	4.2	<10	24
*Dup BB-29	N.A.	N.A.	N.A.	N.A.	N.A.	N.A.	N.A.	N.A.

This document is issued by the Company under its General Conditions of Service accessible at http://www.sgs.com/terms_and_conditions.htm. Attention is drawn to the limitation of liability, indemnification and jurisdiction issues defined therein.

WARNING: The sample(s) to which the findings recorded herein (the "Findings") relate was (were) drawn and / or provided by the Client or by a third party acting at the Client's direction. The Findings constitute no warranty of the sample's representativity of the goods and strictly relate to the sample(s). The Company accepts no liability with regard to the origin or source from which the sample(s) is/are said to be extracted. The findings report on the samples provided by the client and are not intended for commercial or contractual settlement purposes. Any unauthorized alteration, forgery or falsification of the content or appearance of this document is unlawful and offenders may be prosecuted to the fullest extent of the law.

SGS Canada Inc. Mineral Services
 185 Concession Street Lakefield ON K0L 2H0 t+1(705) 652-2000 f+1(705) 652-6365 www.ca.sgs.com

Member of the SGS Group (Société Générale de Surveillance)

Element Method	@Ti	@V	@W	@Y	@Zn	@Zr
	GE_ICP12B	GE_ICP12B	GE_ICP12B	GE_ICP12B	GE_ICP12B	GE_ICP12B
Detection Limit	0.01	1	10	0.5	1	0.5
Units	%	ppm	ppm	ppm	ppm	ppm
BB-22	N.A.	N.A.	N.A.	N.A.	N.A.	N.A.
BB-23	N.A.	N.A.	N.A.	N.A.	N.A.	N.A.
BB-24	N.A.	N.A.	N.A.	N.A.	N.A.	N.A.
BB-25	N.A.	N.A.	N.A.	N.A.	N.A.	N.A.
BB-26	N.A.	N.A.	N.A.	N.A.	N.A.	N.A.
BB-27	N.A.	N.A.	N.A.	N.A.	N.A.	N.A.
BB-28	N.A.	N.A.	N.A.	N.A.	N.A.	N.A.
BB-29	N.A.	N.A.	N.A.	N.A.	N.A.	N.A.
BB-30	N.A.	N.A.	N.A.	N.A.	N.A.	N.A.
BB-33	N.A.	N.A.	N.A.	N.A.	N.A.	N.A.
BB-34	N.A.	N.A.	N.A.	N.A.	N.A.	N.A.
BB-35	N.A.	N.A.	N.A.	N.A.	N.A.	N.A.
BB-36	N.A.	N.A.	N.A.	N.A.	N.A.	N.A.
BB-31	N.A.	N.A.	N.A.	N.A.	N.A.	N.A.
BB-32	0.04	72	<10	<0.5	37	4.5
*Dup BB-29	N.A.	N.A.	N.A.	N.A.	N.A.	N.A.

This document is issued by the Company under its General Conditions of Service accessible at http://www.sgs.com/terms_and_conditions.htm. Attention is drawn to the limitation of liability, indemnification and jurisdiction issues defined therein.

WARNING: The sample(s) to which the findings recorded herein (the "Findings") relate was (were) drawn and / or provided by the Client or by a third party acting at the Client's direction. The Findings constitute no warranty of the sample's representativity of the goods and strictly relate to the sample(s). The Company accepts no liability with regard to the origin or source from which the sample(s) is/are said to be extracted. The findings report on the samples provided by the client and are not intended for commercial or contractual settlement purposes. Any unauthorized alteration, forgery or falsification of the content or appearance of this document is unlawful and offenders may be prosecuted to the fullest extent of the law.

SGS Canada Inc. Mineral Services
 185 Concession Street Lakefield ON K0L 2H0 t+1(705) 652-2000 f+1(705) 652-6365 www.ca.sgs.com

Member of the SGS Group (Société Générale de Surveillance)



INVOICE

Invoice Number : 10827119
 Date : 27-NOV-14
 Page : 1 / 2

COD SGS MINERALS
 185 CONCESSION ST
 PO BOX 4300
 LAKEFIELD ON K0L 2H0
 Canada

Customer Number : 272831
 Currency : CAD
 Payment Term : Due immediately
 SGS Order No. : 696515

Customer Reference : Attn: ACCOUNTS PAYABLE; Robert Dillman
 Certificate(s) / Report(s) No(s): Brandy Brook Mines - WO#LK1400644
 Job Reference : WO#LK1400644; Brandy Brook Mines -
 Order Source Reference: 0000034001
 Paid by Credit Card; Auth# 070473; 20141127_MR

Goldstake Explorations Inc.
 8901 Rely Drive
 Mount Brydges, ON, N0L 1W0
 Canada

Item	Description	Quantity	UoM	Unit Price	Net Amount	Amount
37351	Sample Preparation Sample Drying at 105°C, <3.0kg GFM Acc: 4000	15	Ea	2.27	34.05	38.48
37351	Sample Preparation Crush <3.0kg, 2mm, 75% passing GFM Acc: 4000	15	Ea	4.35	65.25	73.73
37351	Sample Preparation Pulverize 250g, Cr steel, 75 microns, 85% passing GFM Acc: 4000	15	Ea	4.35	65.25	73.73
37366	Routine Analysis by Fire Assay Exploration grade 30g Pb fusion, ICPOES GFM Acc: 4000	2	Ea	21.10	42.20	47.69
37366	Routine Analysis by Fire Assay Exploration grade 30g Pb fusion, ICPOES GFM Acc: 4000	13	Ea	17.90	232.70	262.95
37370	Routine Analysis by ICP-OES Exploration grade 2 acid digest for organic or high sulphide >10% - ICP-OES GFM Acc: 4000	1	Ea	13.05	13.05	14.75

Execution Date(s) : 26-Nov-2014
 Actual Execution End-Date : 2014-NOV-25

HST : 58.83
 Net Amount CAD : 452.50
 Sum of Tax CAD : 58.83
Total Amount CAD : 511.33

PAID

Contact Name: LEE, I-CHING
 Direct line: (705) 652-2000 Ext 2307
 E-mail: I-CHING.LEE@SGS.COM

Issuing Affiliate : F402001
 10827119 27-NOV-14 272831

SGS Canada Inc. Mineral Services PO Box 4300 185 Concession Street Lakefield, ON, K0L 2H0 Canada
 t: (705) 652-2000 f: (705) 652-6365

SGS Tax ID GST/HST/TPS#R105082572 QST/TVQ#R1010505000 Member of the SGS Group

All orders are accepted and all reports and certificates are issued subject to the SGS General Conditions of Service for North America (copy available upon request or may be viewed at <http://www.sgs.com>) or as otherwise agreed upon. Any person, including the customer, using or relying on this certificate or report, agrees that the liability of the contracting SGS affiliate shall in no case exceed a total aggregate sum of the lesser of US \$20,000 or ten times the fee paid or payable for the service giving rise to the claim, but in no event in excess of the extent of the proven negligence of the contracting SGS affiliate. The results shown on this test or inspection report refer only to the sample(s) tested or inspected unless otherwise stated.



INVOICE

Invoice Number : 10821824
 Date : 06-NOV-14
 Page : 1 / 2

COD SGS MINERALS
 185 CONCESSION ST
 PO BOX 4300
 LAKEFIELD ON K0L 2H0
 Canada

Customer Number : 272831
 Currency : CAD
 Payment Term : Due immediately
 SGS Order No. : 691882

Customer Reference : Attn: ACCOUNTS PAYABLE; Robert Dillman
 Certificate(s) / Report(s) No(s): Brandy Brook Mines - Tannahill Project WO#LK1400598
 Job Reference : WO#LK1400598: Brandy Brook Mines - Tannahill Project
 Order Source Reference: 0000033942; Paid by Credit Card; Auth#: 043036, 20141106_MR

Goldstake Explorations Inc.
 8901 Reilly Drive, Mount Brydges
 ON, N0L 1W0, Canada

Item	Description	Quantity	UoM	Unit Price	Net Amount	Amount
37351	Sample Preparation Crush <3.0kg, 2mm, 75% passing GFM Acc. 4000	13	Ea	4.35	56.55	63.90
37351	Sample Preparation Pulverize 250g, Cr steel, 75 microns, 85% passing GFM Acc. 4000	13	Ea	4.35	56.55	63.90
37366	Routine Analysis by Fire Assay Ore grade 30g Pb fusion, Gravimetric GFM Acc. 4000	13	Ea	46.00	598.00	675.74
37660	Geochemical Package by ICPOES and ICPLMS Exploration grade aqua regia digest ICPOES/MS analysis GFM Acc. 4000	13	Ea	23.80	309.40	(349.62)
		4 BB			95.20	107.58
	Execution Date(s)	05-Nov-2014				
	Actual Execution End-Date	2014-NOV-05				

PAID

	HST	132.66
Net Amount	CAD	1,020.50
Sum of Tax	CAD	132.66
Total Amount	CAD	1,153.16

-242.04
911.12 BB

Contact Name:	LEE, I-CHING
Direct line:	(705) 652-2000 Ext 2307
E-mail:	I-CHING.LEE@SGS.COM

Issuing Affiliate : F402001
 10821824 06-NOV-14 272831

Please Remit To:
 SGS Canada Inc
 WIRE TRANSFERS:
 Citibank NA Canadian Branch - Toronto, ON
 BANK# 328 TRANSIT# 20012
 SWIFT: CITICATTCBH ABA: 021000089
 CAD2014113008
 USD2014113016

PLEASE INCLUDE INVOICE NUMBER WITH PAYMENT DETAIL

SGS Canada Inc. Mineral Services PO Box 4300 185 Concession Street Lakefield, ON, K0L 2H0 Canada
 t: (705) 652-2000 f: (705) 652-6365

SGS Tax ID GST/HST/TPS#R105082572 QST/TVQ#R1010505000 Member of the SGS Group

All orders are accepted and all reports and certificates are issued subject to the SGS General Conditions of Service for North America (copy available upon request or may be viewed at http://www.sgs.com) or as otherwise agreed upon. Any person, including the customer, using or relying on this certificate or report, agrees that the liability of the contracting SGS affiliate shall in no case exceed a total aggregate sum of the lesser of US\$ 520,000 or ten times the fee paid or payable for the service giving rise to the claim, but in no event in excess of the extent of the proven negligence of the contracting SGS affiliate. The results shown on this test or inspection report refer only to the sample(s) tested or inspected unless otherwise stated.