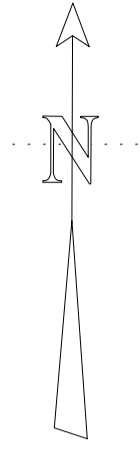
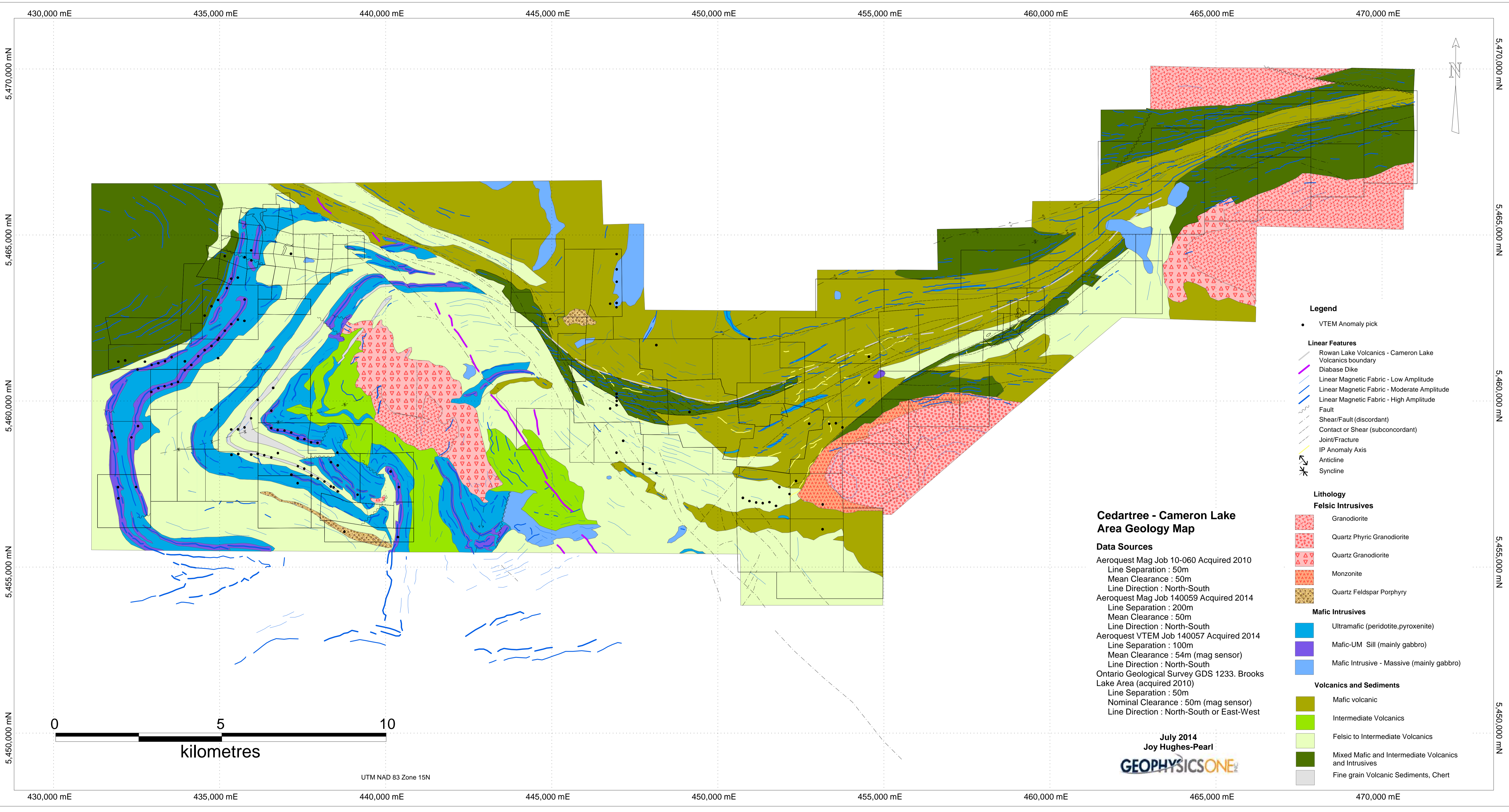


APPENDIX III – VTEM Anomaly Map



Legend

- VTEM Anomaly pick
- Linear Features**
 - Rowan Lake Volcanics - Cameron Lake Volcanics boundary
 - Diabase Dike
 - Linear Magnetic Fabric - Low Amplitude
 - Linear Magnetic Fabric - Moderate Amplitude
 - Linear Magnetic Fabric - High Amplitude
 - Fault
 - Shear/Fault (discordant)
 - Contact or Shear (subconcordant)
 - Joint/Fracture
 - IP Anomaly Axis
 - Anticline
 - Syncline

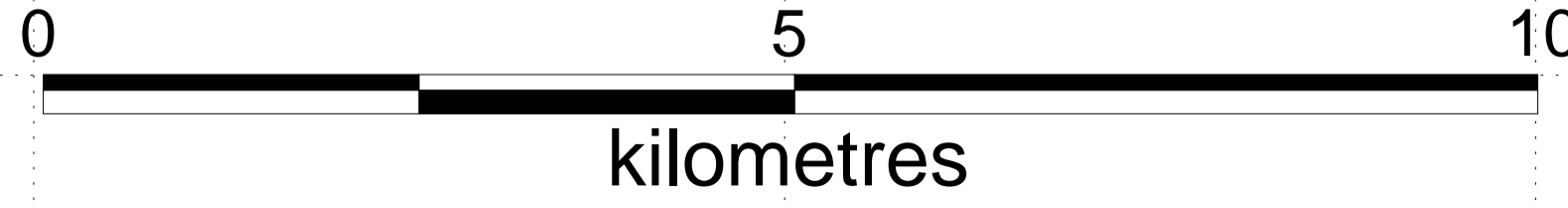
Lithology

- Felsic Intrusives**
 - Granodiorite
 - Quartz Phyrlic Granodiorite
 - Quartz Granodiorite
 - Monzonite
 - Quartz Feldspar Porphyry
- Mafic Intrusives**
 - Ultramafic (peridotite, pyroxenite)
 - Mafic-UM Sill (mainly gabbro)
 - Mafic Intrusive - Massive (mainly gabbro)
- Volcanics and Sediments**
 - Mafic volcanic
 - Intermediate Volcanics
 - Felsic to Intermediate Volcanics
 - Mixed Mafic and Intermediate Volcanics and Intrusives
 - Fine grain Volcanic Sediments, Chert

Cedartree - Cameron Lake Area Geology Map

Data Sources
 Aeroquest Mag Job 10-060 Acquired 2010
 Line Separation : 50m
 Mean Clearance : 50m
 Line Direction : North-South
 Aeroquest Mag Job 140059 Acquired 2014
 Line Separation : 200m
 Mean Clearance : 50m
 Line Direction : North-South
 Aeroquest VTEM Job 140057 Acquired 2014
 Line Separation : 100m
 Mean Clearance : 54m (mag sensor)
 Line Direction : North-South
 Ontario Geological Survey GDS 1233. Brooks Lake Area (acquired 2010)
 Line Separation : 50m
 Nominal Clearance : 50m (mag sensor)
 Line Direction : North-South or East-West

July 2014
 Joy Hughes-Pearl
GEOPHYSICSONE



UTM NAD 83 Zone 15N