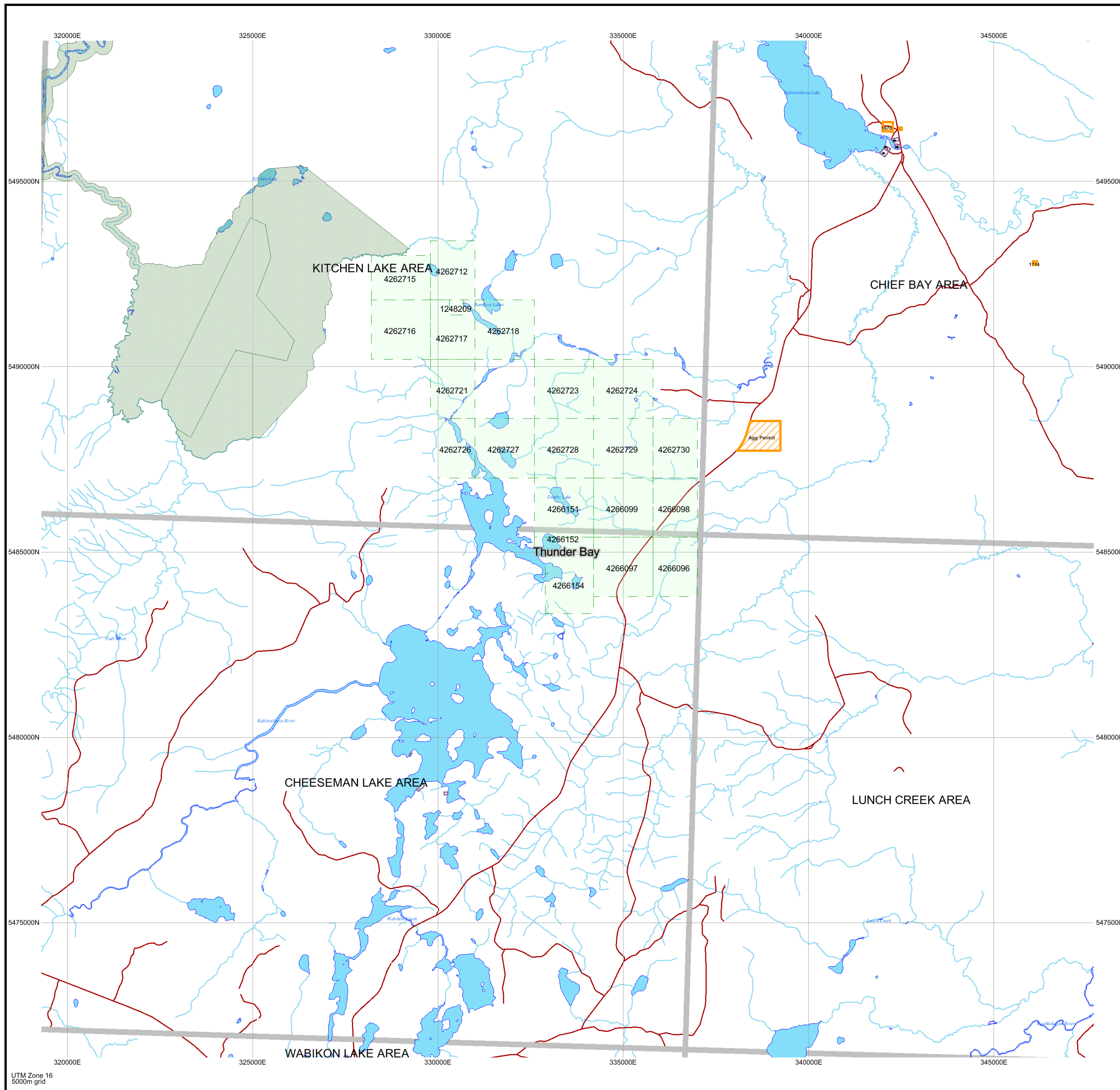


Date / Time of Issue: Sun Mar 22 22:08:34 EST 2015

TOWNSHIP / AREA PLAN
CHEESEMAN LAKE AREA G-0709

ADMINISTRATIVE DISTRICTS / DIVISIONS

Mining Division Thunder Bay
Land Titles/Registry Division THUNDER BAY
Ministry of Natural Resources District THUNDER BAY

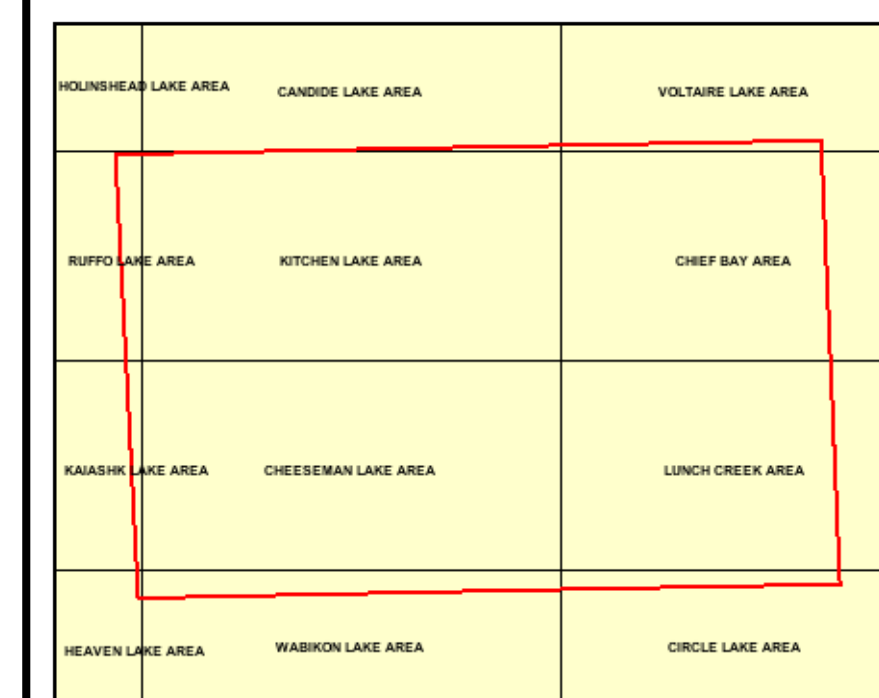


TOPOGRAPHIC

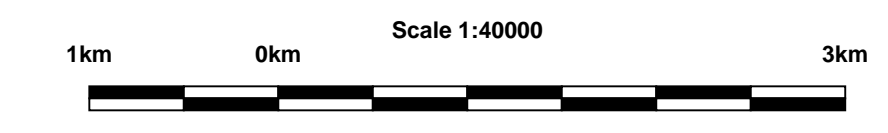
- Administrative Boundaries
- Township
- Concession, Lot
- Provincial Park
- Indian Reserve
- Cliff, Pit & Pile
- Contour
- Mine Shafts
- Mine Headframe
- Railway
- Road
- Trail
- Natural Gas Pipeline
- Utilities
- Tower

Land Tenure

- Freehold Patent
 - Surface And Mining Rights
 - Surface Rights Only
 - Mining Rights Only
- Leasehold Patent
 - Surface And Mining Rights
 - Surface Rights Only
 - Mining Rights Only
- Licence of Occupation
 - Uses Not Specified
 - Surface And Mining Rights
 - Surface Rights Only
 - Mining Rights Only
- Land Use Permit
- Order In Council (Not open for staking)
- Water Power Lease Agreement



- Mining Claim
- Filed Only Mining Claims
- LAND TENURE WITHDRAWALS
 - Areas Withdrawn from Disposition
 - Mining Acts Withdrawal Types
 - Surface And Mining Rights Withdrawal
 - Surface Rights Only Withdrawal
 - Mining Rights Only Withdrawal
 - Order In Council Withdrawal Types
 - Surface And Mining Rights Withdrawal
 - Surface Rights Only Withdrawal
 - Mining Rights Only Withdrawal
 - IMPORTANT NOTICES



LAND TENURE WITHDRAWAL DESCRIPTIONS

Identifier	Type	Date	Description
1603	Wsm	Jan 1, 2001	CROWN RESERVE REQ 23 JUNE 1961 FILE 160704
1670	Ws	Jan 1, 2001	SRO WITHDRAWAL
1714	Wsm	Jan 1, 2001	FLOODING ELEVATION: 855 FT FILE: 12198 VOL 2
W-TB-18/06	Ws	Mar 8, 2006	http://www.mci.mndm.gov.on.ca/mines/lands/withdrawals/withdrawals2006/wb18-06_e.html http://www.mci.mndm.gov.on.ca/mines/lands/withdrawals/withdrawals2006/wb18-06_e.html
W-TB-77/07	Ws	Nov 7, 2007	http://www.mci.mndm.gov.on.ca/mines/lands/withdrawals/withdrawals2007/wb77-07_e.html >W-TB-77/07 S.R.O. withdrawal S.35 Mining Act RSO 1999, November 7, 2007 Click to link to withdrawal order

IMPORTANT NOTICES

Areas under which special regulation, limitations or conditions exist that affect normal prospecting, staking and mineral development activities.

Type	Description
Agg permit	Please enter a description for this item.

General Information and Limitations

Those wishing to stake mining claims should consult with the Provincial Mining Recorder's Office of the Ministry of Northern Development and Mines for additional information on the status of the lands shown hereon. This map is not intended for navigational, survey, or land title determination purposes as the information shown on this map is compiled from various sources. Completeness and accuracy are not guaranteed. Additional information may also be obtained through the local Land Titles or Registry Office, or the Ministry of Natural Resources.

Contact Information:
Provincial Mining Recorder's Office
Willet Green Miller Center 933 Ramsey Lake Road
Sudbury ON P0E 6B5
Home Page: www.mndm.gov.on.ca/MNDM/MINESLANDS/mismpgs.htm

Toll Free
Tel: 1 (888) 415-5845 ext 5742
Tel: 1 (877) 670-1444

Map Datum: NAD 83
Projection: UTM 18 degree
Topographic Data Source: Land Information Ontario
Mining Land Tenure Source: Provincial Mining Recorder's Office

This map may not show unregistered land tenure and interests in land including certain patents, leases, easements, right of ways, flooding rights, licenses, or other forms of disposition of rights and interests from the Crown. Also certain land tenure and land uses that restrict or prohibit free entry to stake mining claims may not be illustrated.