

ASSESSMENT WORK FILING
IP AND MAGNETOMETER SURVEYS
ON THE
CHURCHILL TWSP. PROPERTY
OF ROY ANNETT

BY INSIGHT GEOPHYSICS INC. AND LARDER GEOPHYSICS LTD
UNDER CONTRACT TO RA RESOURCES LTD
DURING OCTOBER 2010

JACK TINDALE
GEOLOGIST

OCTOBER 17, 2013
TORONTO, ONT.

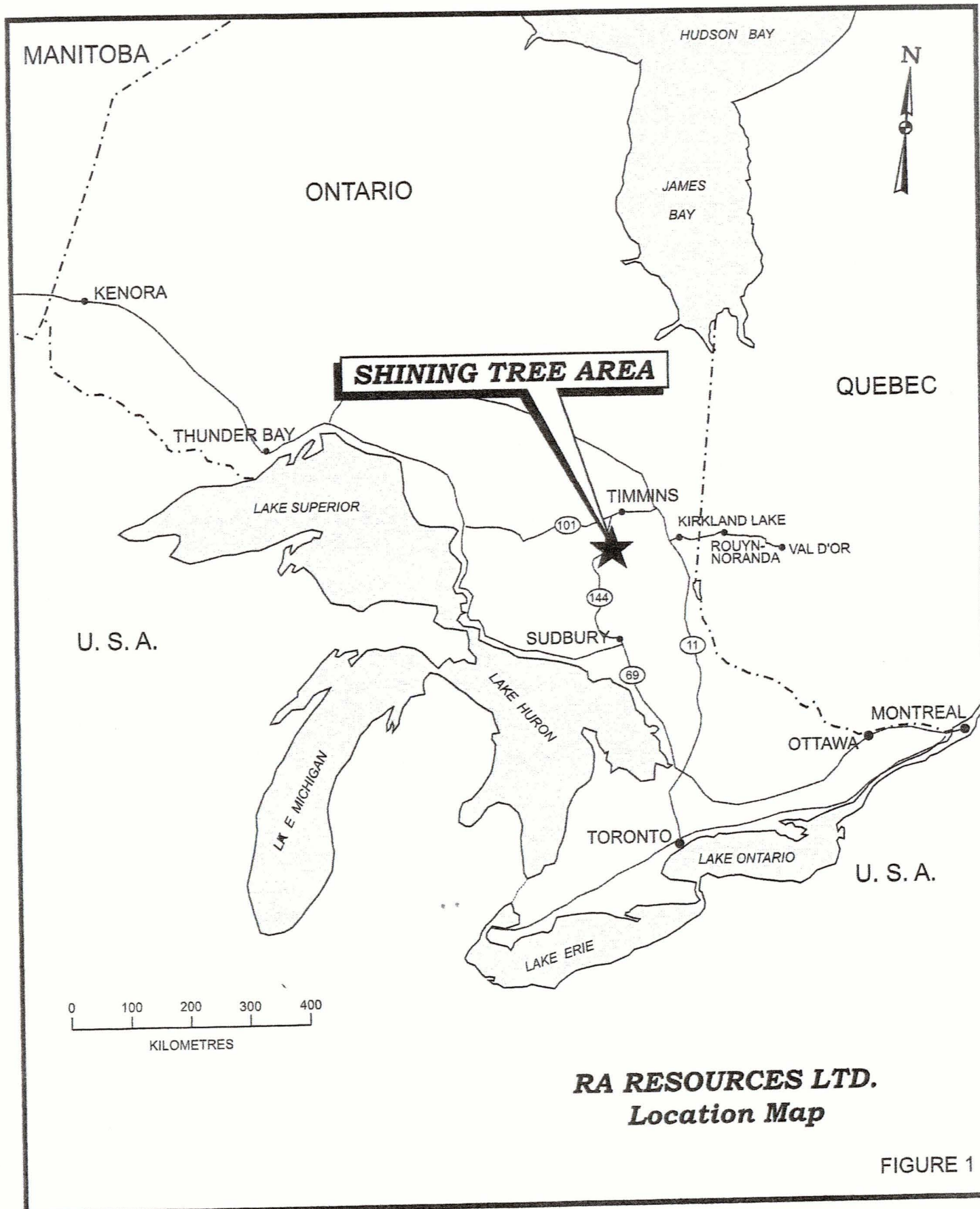
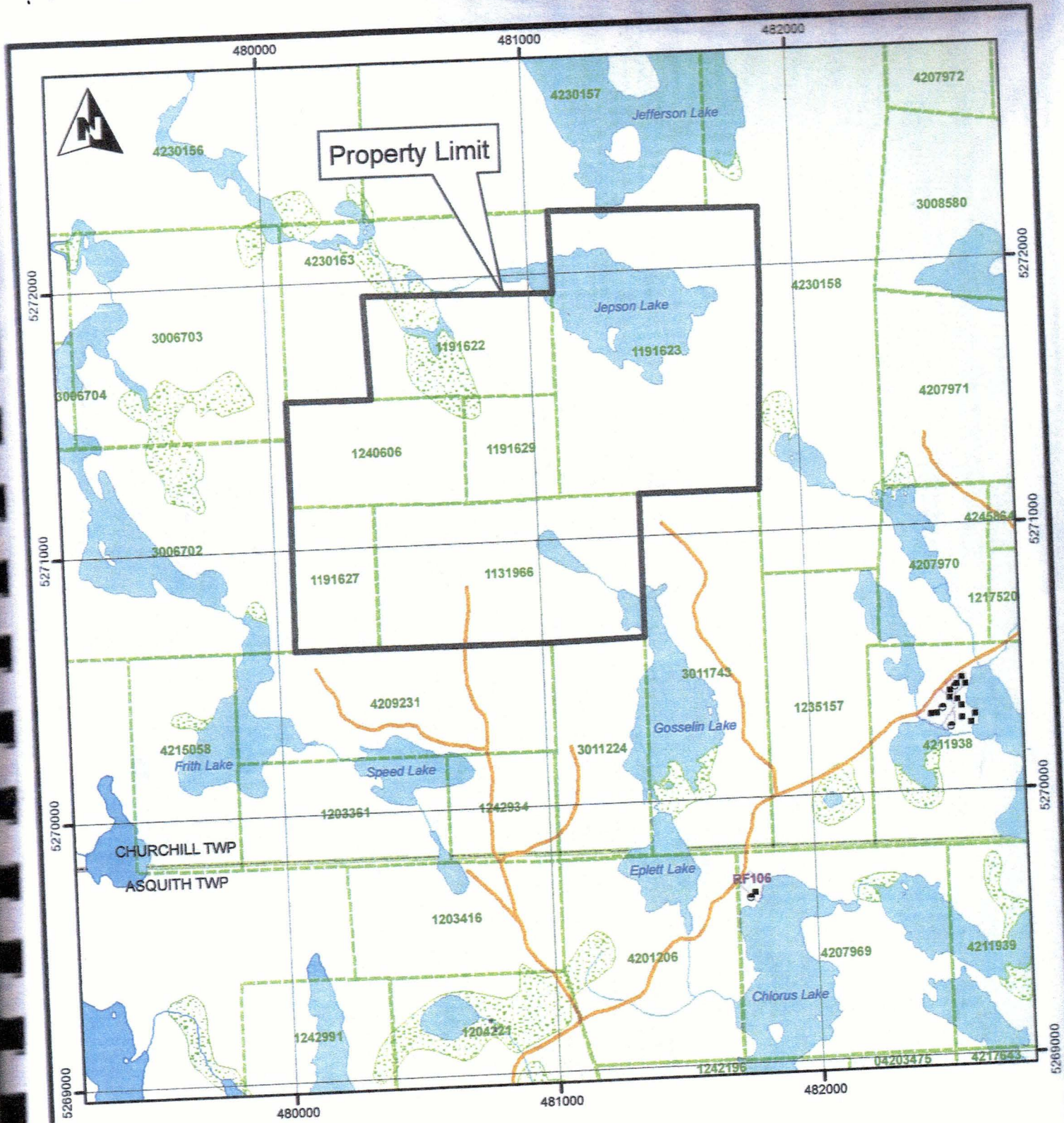
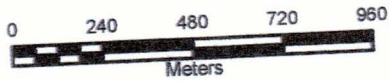


FIGURE 1



RA RESOURCES LTD.
Claim Map
Churchill Twp Property, Ontario



May, 2009

Figure 2

Introduction

The writer because of illness in 2010 – 2011 neglected to submit the subject Geophysical Survey Reports for assessment credits. These costly surveys (\$70,653) are hereby submitted whereby the credits will be for 50% of this total.

Claims, Ownership, Access

<u>Claim No</u>	<u>Units</u>	<u>Record Date</u>	<u>Registered Owner</u>
1131966	3	Dec 05, 2000	Roy Annett
1191622	2	Mar 20, 2000	“
1191623	6	Mar 20, 2000	“
1191627	1	June 15, 2000	“
1191629	1	Sept 28, 2000	“
1240606	2	July 03, 2001	“

The property is depicted on Figure 2, a Ra Resources Inc map, enclosed.

The claims are registered to Roy Annett of Shining Tree who shares ownership equally with partners Robin Lowe of Waterloo, Larry Salo of Connaught and the writer.

Ra Resources Ltd, an Ontario incorporation optioned the property in December 2006 and contracted in 2010 to carryout the subject IP and Mag surveys.

Ra Resources Ltd subsequently merged with Golden Phoenix Minerals Inc, a Nevada incorporation, which currently trades Nasdaq O.T.C.

The property is located approximately three kilometers north of the village of Shining Tree in the District of Sudbury, Larder Lake Mining Division. Paved highway No. 560, which passes through Shining Tree, connects with highway No. 144 some 53 kilometers to the west from which access to Timmins to the north and Sudbury to the south is obtained. Fig. 1 depicts the property location in relation to these major centres.

A bush trail suitable for four wheel drive vehicles leads north for about two kilometers from highway No. 560 from a point approximately two kilometers east of Shining Tree and provides access to the claim group. An ATV trail leads easterly to the showings from the end of the bush road, a distance of approximately ½ mile.

General Geology

The geology of Connaught and Churchill Townships was mapped by M.W. Carter in the late 1970's and published as O.G.S. report no. 190 in 1980. Since Carter's mapping much of the area has been clear-cut giving rise to a multitude of logging roads and trails and subsequent additional exposures of rock outcropping. Quoting Carter's general geology, "Lithologically the Early Precambrian rocks comprise a metavolcanic and metasedimentary sequence interlayered with mafic ultramafic rocks, all of which are intruded by felsic to intermediate to plutonic rocks and diabase dikes"

The Churchill Property, much of which was mapped at a scale of 1 inch – 400 feet by Peter Born for Onitap Resources Inc. in 1985, (MNDM Assessment Files), is underlain with light to dark green mafic volcanics varying in composition from basalt to andesite. Pillows are common though chlorite and carbonate alteration obscures the primary textures in most locations. The rocks appear to trend in a roughly NW-SE direction with foliation mirroring the orientation. A small plug of feldspar porphyry

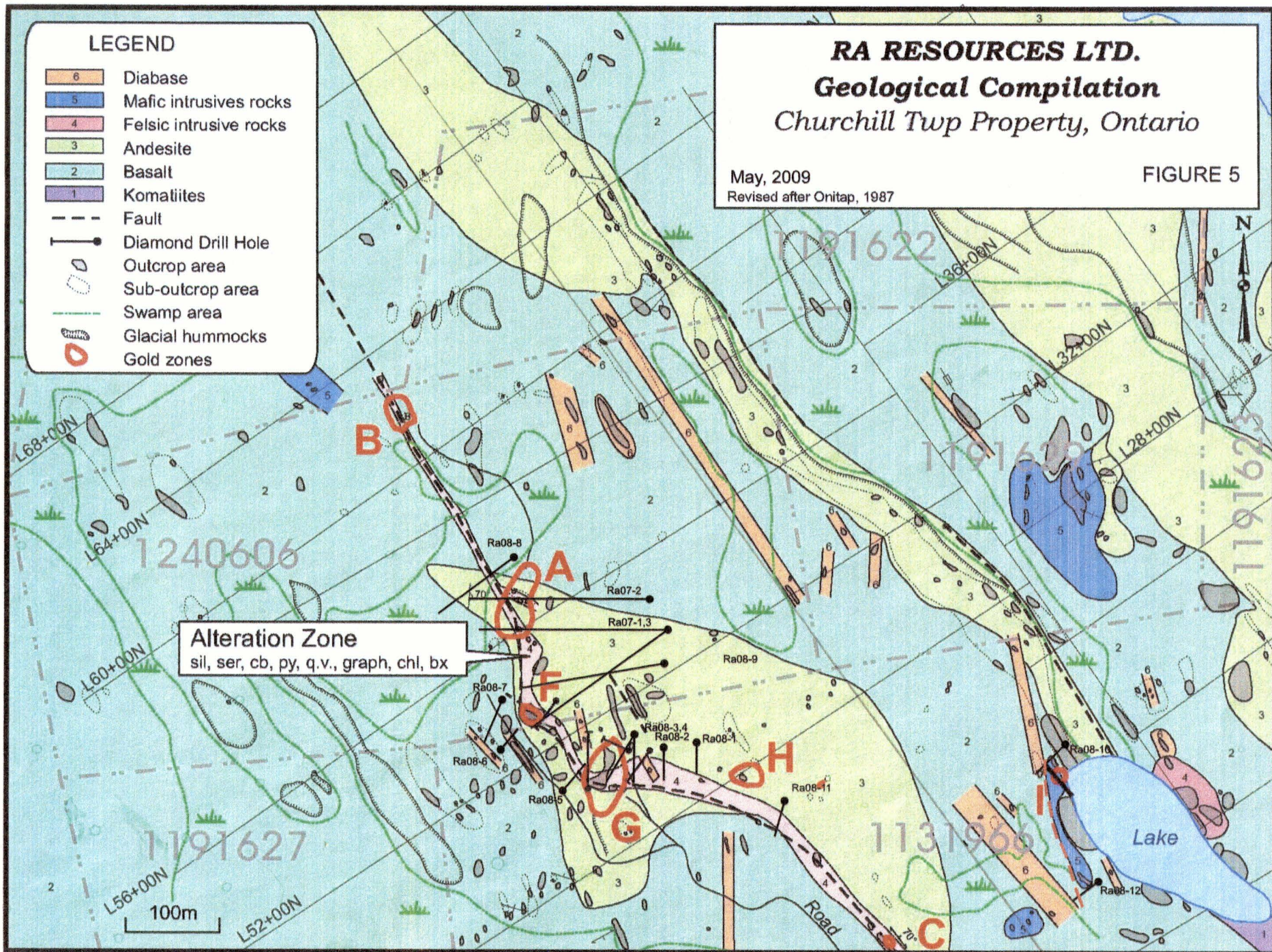
LEGEND

- 6 Diabase
- 5 Mafic intrusives rocks
- 4 Felsic intrusive rocks
- 3 Andesite
- 2 Basalt
- 1 Komatiites
- Fault
- Diamond Drill Hole
- Outcrop area
- Sub-outcrop area
- Swamp area
- Glacial hummocks
- Gold zones

RA RESOURCES LTD.
Geological Compilation
Churchill Twp Property, Ontario

May, 2009
 Revised after Onitap, 1987

FIGURE 5



underlays the little lake on the east side of Claim 1131966. North and northwest striking diabase dikes cross the property. Fig. No. 5 depicts a portion of the property geology.

The writer mapped a portion of the Churchill Property during 2007 (filed as assessment work August 2007) at a scale of 1" = 100' principally to tie in all the gold showings present on the property.

Table of Formations (after P. Born)

Early to Late Precambrian

Mafic Intrusive Rocks-diabase, gabbro, pyroxenite

Felsic Intrusive Rocks-feldspar, poryphry

Ultramafic to Intermediate Metavolcanic and Metasedimentary Rocks

-chlorite tuffs and exhalites

-andesites

-basalts

-komatites

Survey Parameters

As recommended by Fred Sharpley, Ra Resources Ltd consulting geologist, an IP survey was contracted to Insight Geophysics Inc. with the purpose of following up on strong alteration zones encountered in drill programs on the property. The deep Induced Polarization survey was designed to read structural condition and associated mineralized occurrences to depths of 500m.

Additionally, Sharpley recommended a Magnetometer survey be carried out over the same grid as the IP survey for structural correlation purposes. Larder Geophysics where contracted for this work which took place shortly after completion of the IP work.

Larder Geophysics also carried out a GPS survey of the grid and also tied-in all of the recent drill hole collars. The GPS map and drill collar locations are depicted on the enclosed CD.

A grid was subsequently cut during August-September 2010 oriented with cross-lines generally at right-angles to the regional geology (ie NE-SW). A sketch of the grid is included in the enclosed (Figure 15a).

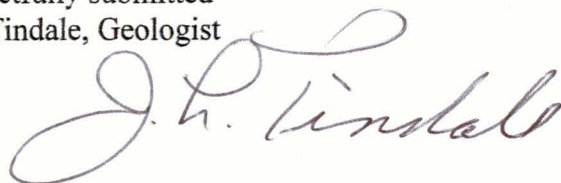
The copy of the Insight report authored by Craig Pawluk is included with this filing as well as the CD of the magnetometer survey and GPS surveys by Jason Ploeger of Larder Geophysics.

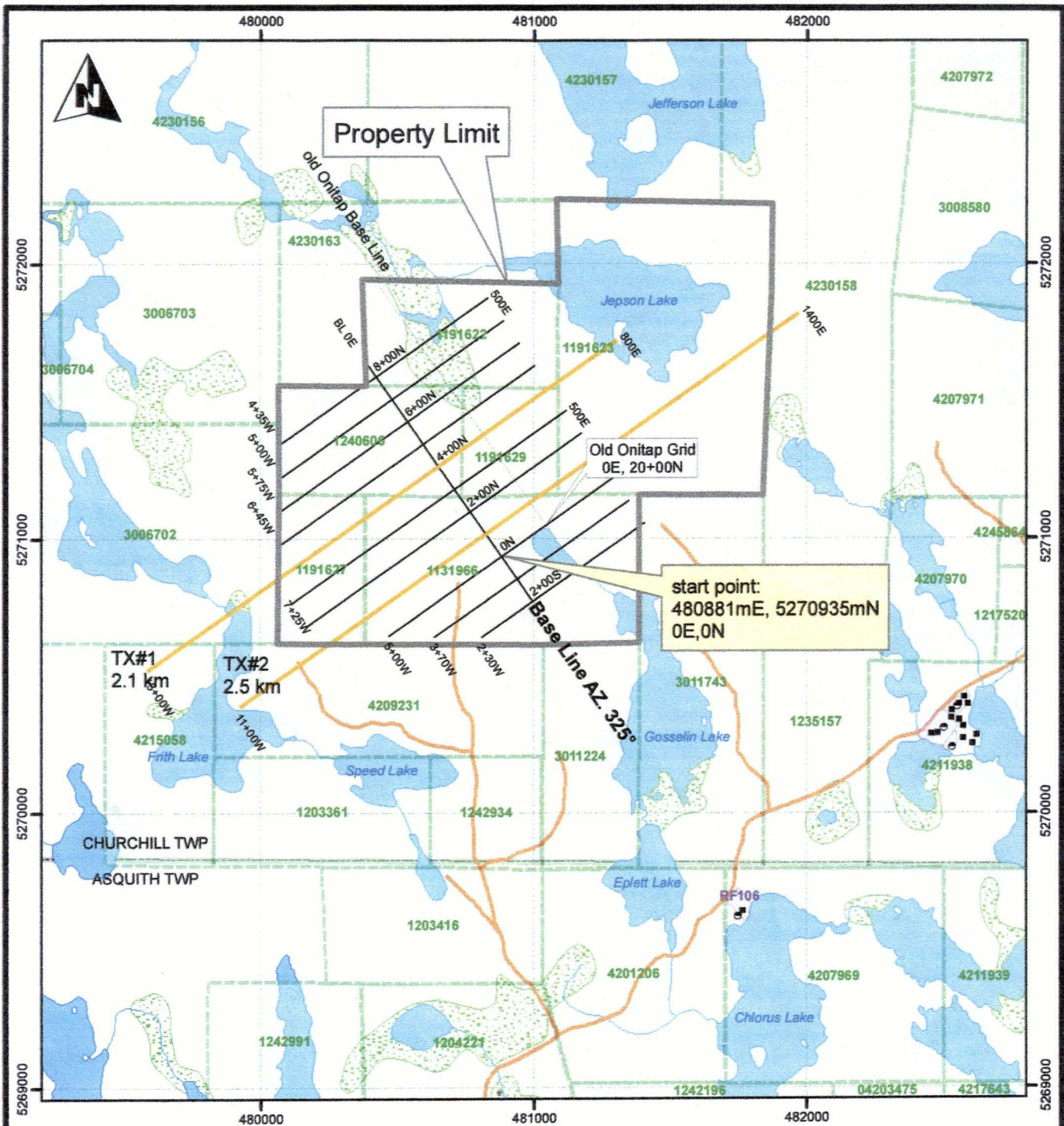
Though Fed Sharpley and the author reviewed the surveys and jointly came up with a number of potential drill targets, funds for follow up work was lacking. Consequently, the property has been taken back by the owners (Annett et al).

The deep IP survey will form the basis for future endeavours on the property.

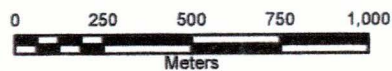
Respectfully submitted
Jack Tindale, Geologist

October 2013
Toronto, Ontario





Projection:
UTM NAD83 Zone 17N



ra_res_proposed_grid.mxd

RA RESOURCES LTD.
Proposed Grid Map
Churchill Twp Property, Ontario

May, 2009

Figure 15a

Date / Time of Issue: Mon Aug 19 10:33:36 EDT 2013

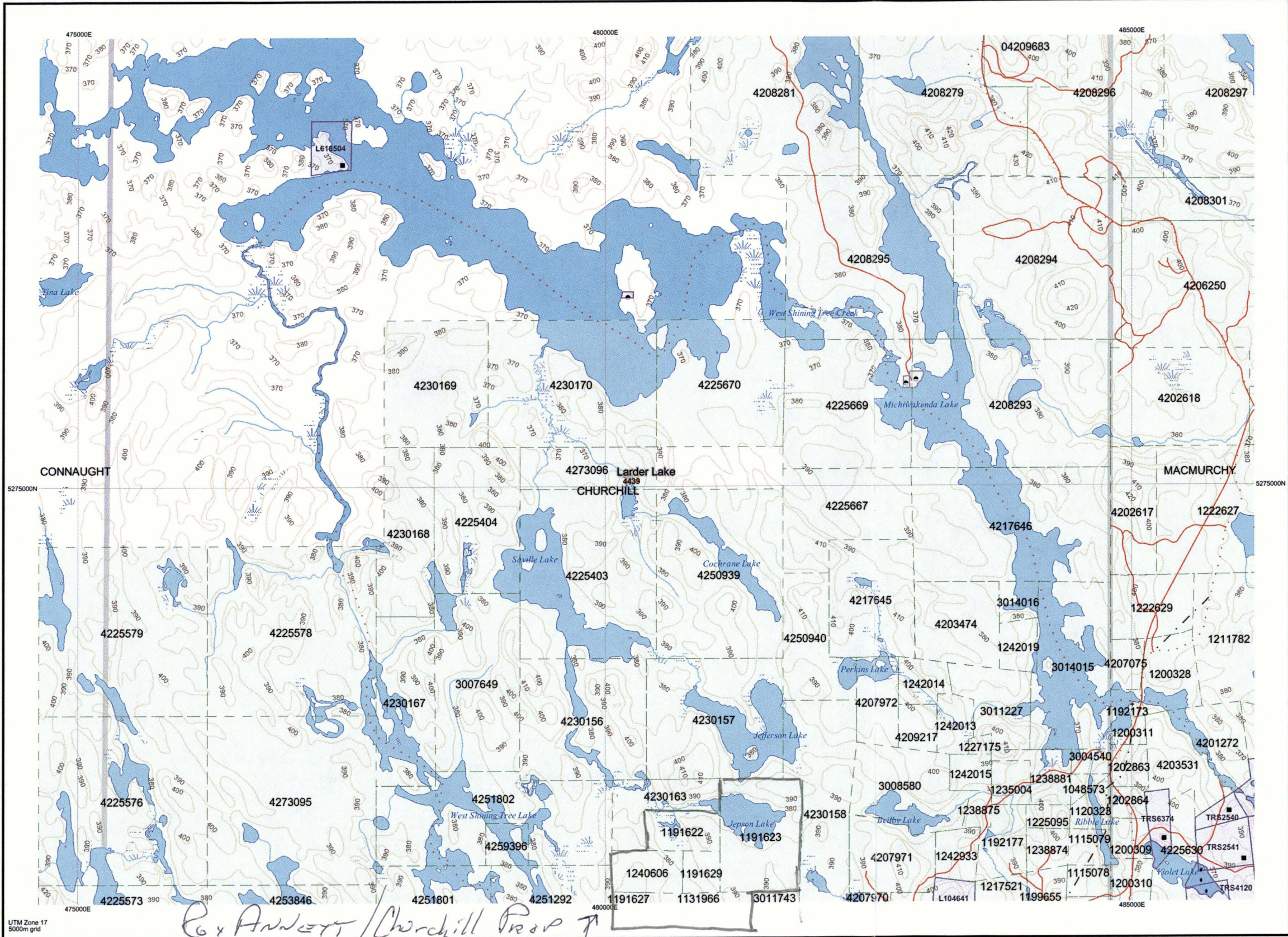
TOWNSHIP / AREA
CHURCHILL

PLAN
G-3210

ADMINISTRATIVE DISTRICTS / DIVISIONS

Mining Division
Land Titles/Registry Division
Ministry of Natural Resources District

Larder Lake
SUDBURY
TIMMINS



TOPOGRAPHIC

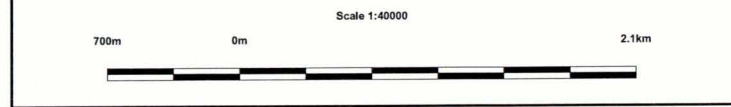
- Administrative Boundaries
- Township
- Concession, Lot
- Provincial Park
- Indian Reserve
- Cliff, Pit & Pile
- Contour
- Mine Shafts
- Mine Headframe
- Railway
- Road
- Trail
- Natural Gas Pipeline
- Utilities
- Tower

Land Tenure

- Freehold Patent**
 - Surface And Mining Rights
 - Surface Rights Only
 - Mining Rights Only
- Leasehold Patent**
 - Surface And Mining Rights
 - Surface Rights Only
 - Mining Rights Only
- Licence of Occupation**
 - Uses Not Specified
 - Surface And Mining Rights
 - Surface Rights Only
 - Mining Rights Only
 - Land Use Permit
 - Order In Council (Not open for staking)
 - Water Power Lease Agreement

BURROWS	KEMP	MOND
CABOT	KELVIN	NATAL
CONNAUGHT	CHURCHILL	MACMURCHY
MIRAMICHI	ASQUITH	FAWCETT
GARBALDI	SHEARD	ODLIVE

- LAND TENURE WITHDRAWALS**
- Mining Claim
 - Filed Only Mining Claims
 - Areas Withdrawn from Disposition
 - Mining Acts Withdrawal Types**
 - Wsm Surface And Mining Rights Withdrawn
 - Ws Surface Rights Only Withdrawn
 - Wm Mining Rights Only Withdrawn
 - Order In Council Withdrawal Types**
 - W'sm Surface And Mining Rights Withdrawn
 - W's Surface Rights Only Withdrawn
 - W'm Mining Rights Only Withdrawn
 - IMPORTANT NOTICES



LAND TENURE WITHDRAWAL DESCRIPTIONS (list may not be complete)

Identifier	Type	Date	Description
4439	Wsm	Jan 1, 2001	400 FT SURFACE RIGHTS RESERVATION ALONG THE SHORES OF ALL LAKES & RIVERS
W-L-44/12	Wsm	Apr 26, 2012	W-L-44/12 M&S withdrawal S.35 Mining Act RSO 1999, April 26, 2012 Click to link to withdrawal order

Those wishing to stake mining claims should consult with the Provincial Mining Recorders' Office of the Ministry of Northern Development and Mines for additional information on the status of the lands shown hereon. This map is not intended for navigational, survey, or land title determination purposes as the information shown on this map is compiled from various sources. Completeness and accuracy are not guaranteed. Additional information may also be obtained through the local Land Titles or Registry Office, or the Ministry of Natural Resources.

The information shown is derived from digital data available in the Provincial Mining Recorders' Office at the time of downloading from the Ministry of Northern Development and Mines website.

General Information and Limitations

Contact Information:
Provincial Mining Recorders' Office
Wilket Green Miller Centre 933 Ramsey Lake Road
Sudbury ON P3E 6B5
Home Page: www.mdm.gov.on.ca/MNDM/MINES/LANDS/mismppge.htm

Toll Free Tel: 1 (888) 415-9845 ext 574
Fax: 1 (877) 670-1444

Map Datum: NAD 83
Projection: UTM (6 degree)
Topographic Data Source: Land Information Ontario
Mining Land Tenure Source: Provincial Mining Recorders' Office

This map may not show unregistered land tenure and interests in land including certain patents, leases, easements, right of ways, flooding rights, licences, or other forms of disposition of rights and interest from the Crown. Also certain land tenure and land uses that restrict or prohibit free entry to stake mining claims may not be illustrated.