

LOCATION MAP

SURVEY SPECIFICATIONS
 Survey Flown: April 18th - 27th 2014
 Survey Type: Fixed Wing Horizontal Magnetic Gradiometry
 Survey Operations Base: Kirkland Lake, Quebec
 Survey Line Azimuth: 040°/220°
 Control Line Azimuth: 130°/310°
 Survey Line Spacing: 50m
 Control Line Spacing: 500m
 Aircraft Mean Terrain Clearance: 72m
 Mean Ground Speed: 56 m/s

AIRCRAFT SPECIFICATIONS
 Aircraft Type: Cessna U206
 Aircraft Registration: C-GGLS

AIRBORNE INSTRUMENTATION
 Data Acquisition: RMS Instruments DAARC 500
 GPS Receiver: Trimble AgGPS 132
 GPS Real Time Correction: Omnistar
 Radar Altimeter: Bendix/King KRA-10A
 Barometric Altimeter: Honeywell
 Fluxgate Magnetometer: Billingsley Magnetics 3 Axial TFM 100-G2
 Navigation: AgNav Inc. LINAV

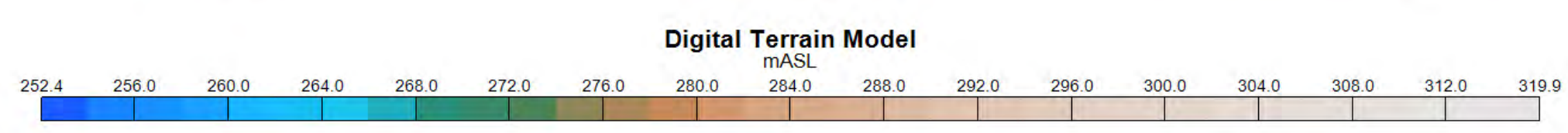
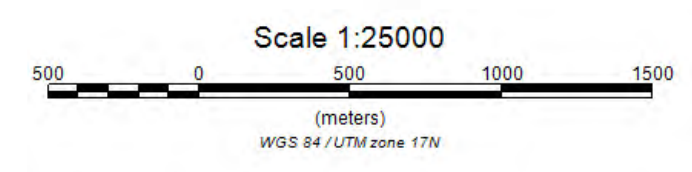
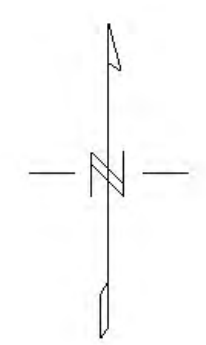
AIRBORNE MAGNETOMETERS (3)
 Magnetometers: Scintrex CS-3
 Magnetometer Sensitivity: +/- 0.005 nT
 Magnetometer Counter: RMS Instruments DAARC 500
 Installation: Wing tip pods, Tail stinger
 Wing Tip Separation: 13.2m
 Wing Center - Tail Magnetometer Separation: 8.87m
 Sampling Rate: 10Hz

GROUND INSTRUMENTATION
 Data Acquisition: Kroum VS Instruments SDAS V2
 Ground Magnetometer: Scintrex CS-3 Cesium Vapour
 GPS Receiver: Garmin, 1 Hz
 Base Station Location: Kirkland Lake Airport

PROCESSING SUMMARY
 MAGNETICS
 Diurnal correction
 Tie line levelling
 Micro levelling

- Legend**
- Client Claim Data
 - MNDM Claims
 - Client Area of Interest
 - Airborne Survey Area

Contour Intervals (mASL)
 10, 50, 250, 1250

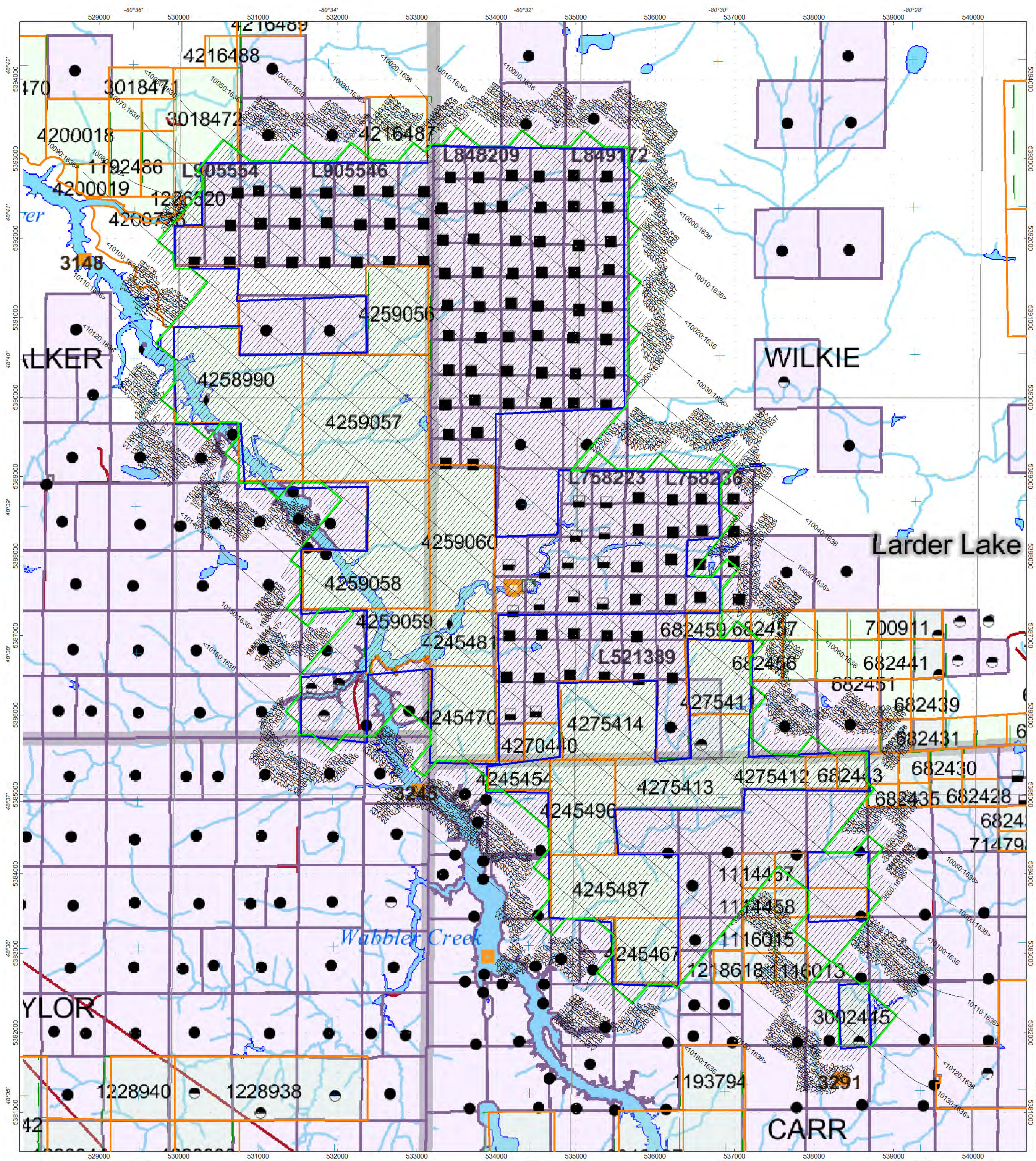


International Explorers and Prospectors

Walker-Wilkie Project
 Timmins, Ontario

DIGITAL TERRAIN MODEL

Survey Flown: April 18th - 27th 2014
 Data Acquired and Processed by TERRAQUEST LTD



LOCATION MAP

SURVEY SPECIFICATIONS
 Survey Flown: April 18th - 27th 2014
 Survey Type: Fixed Wing Horizontal Magnetic Gradiometry
 Survey Operations Base: Kirkland Lake, Quebec
 Survey Line Azimuth: 040°/220°
 Control Line Azimuth: 130°/310°
 Survey Line Spacing: 50m
 Control Line Spacing: 500m
 Aircraft Mean Terrain Clearance: 72m
 Mean Ground Speed: 56 m/s

AIRCRAFT SPECIFICATIONS
 Aircraft Type: Cessna U206
 Aircraft Registration: C-GGLS

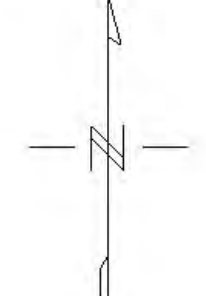
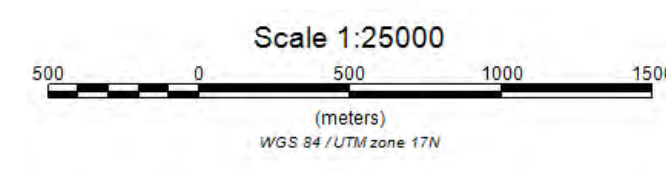
AIRBORNE INSTRUMENTATION
 Data Acquisition: RMS Instruments DAARC 500
 GPS Receiver: Trimble AgGPS 132
 GPS Real Time Correction: Omnistar
 Radar Altimeter: Bendix/King KRA-10A
 Barometric Altimeter: Honeywell
 Fluxgate Magnetometer: Billingsley Magnetics 3 Axial TFM 100-G2
 Navigation: AgNav Inc. LINA V

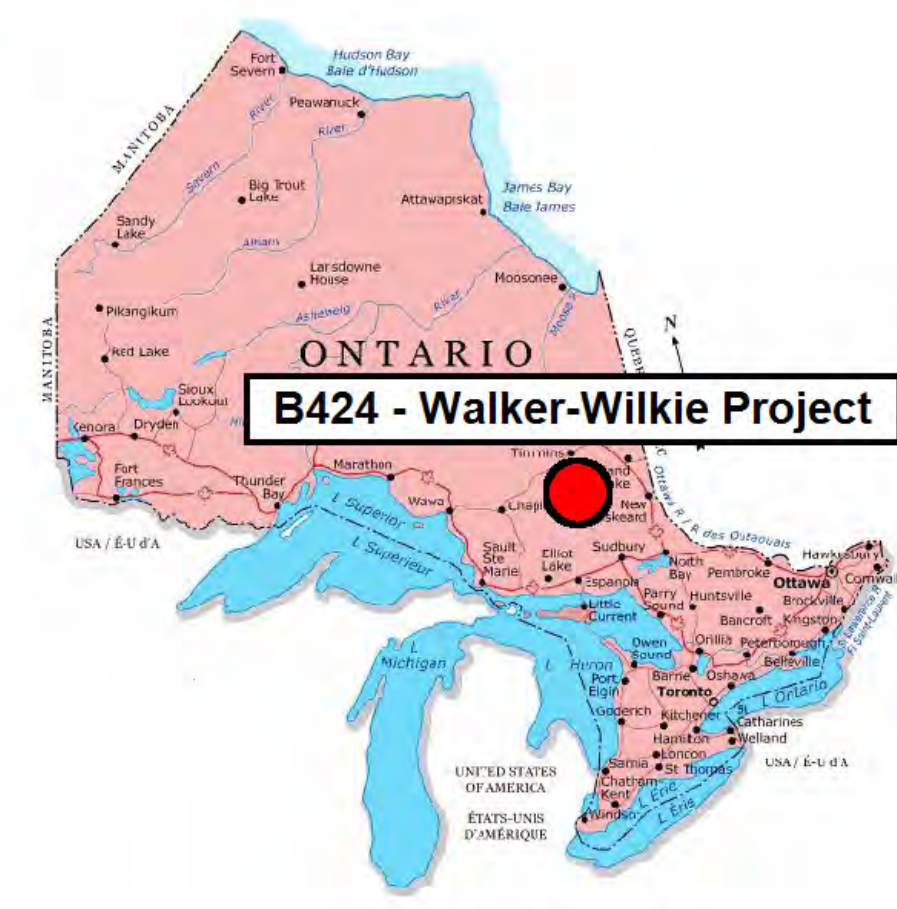
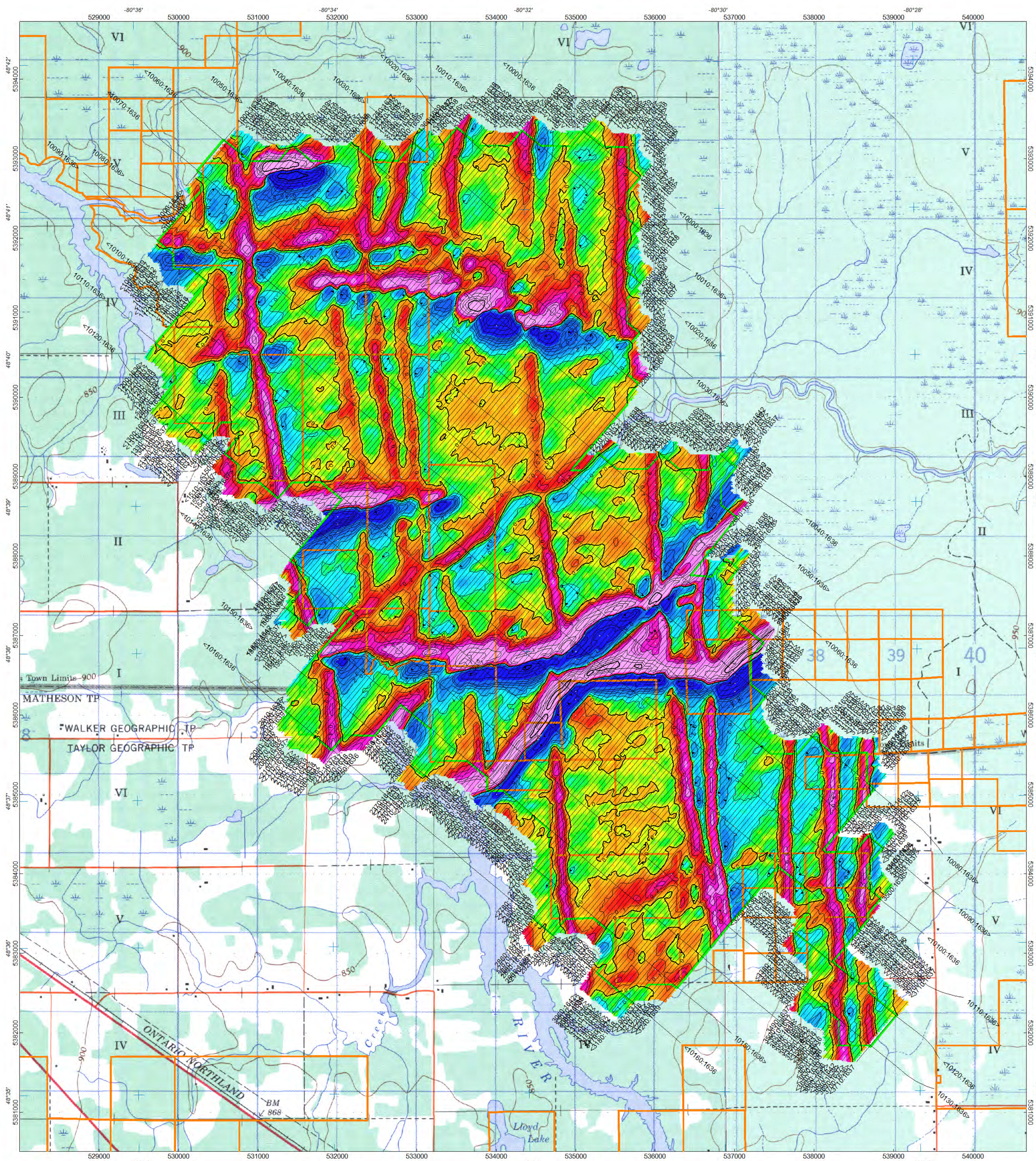
AIRBORNE MAGNETOMETERS (3)
 Magnetometers: Scintrex CS-3
 Magnetometer Sensitivity: +/- 0.005 nT
 Magnetometer Counter: RMS Instruments DAARC 500
 Installation: Wing tip pods, Tail stinger
 Wing Tip Separation: 13.2m
 Wing Center - Tail Magnetometer Separation: 8.87m
 Sampling Rate: 10Hz

GROUND INSTRUMENTATION
 Data Acquisition: Kroum VS Instruments SDAS V2
 Ground Magnetometer: Scintrex CS-3 Cesium Vapour
 GPS Receiver: Garmin, 1 Hz
 Base Station Location: Kirkland Lake Airport

PROCESSING SUMMARY
 MAGNETICS
 Diurnal correction
 Tie line levelling
 Micro levelling

- Legend**
- Client Claim Data
 - MNDM Claims
 - Client Area of Interest
 - Airborne Survey Area





LOCATION MAP

SURVEY SPECIFICATIONS
 Survey Flown: April 18th - 27th 2014
 Survey Type: Fixed Wing Horizontal Magnetic Gradiometry
 Survey Operations Base: Kirkland Lake, Quebec
 Survey Line Azimuth: 040°/220°
 Control Line Azimuth: 130°/310°
 Survey Line Spacing: 50m
 Control Line Spacing: 500m
 Aircraft Mean Terrain Clearance: 72m
 Mean Ground Speed: 56 m/s

AIRCRAFT SPECIFICATIONS
 Aircraft Type: Cessna U206
 Aircraft Registration: C-GGLS

AIRBORNE INSTRUMENTATION
 Data Acquisition: RMS Instruments DAARC 500
 GPS Receiver: Trimble AgGPS 132
 GPS Real Time Correction: Omnistar
 Radar Altimeter: Bendix/King KRA-10A
 Barometric Altimeter: Honeywell
 Fluxgate Magnetometer: Billingsley Magnetics 3 Axial TFM 100-G2
 Navigation: AgNav Inc. LINAV

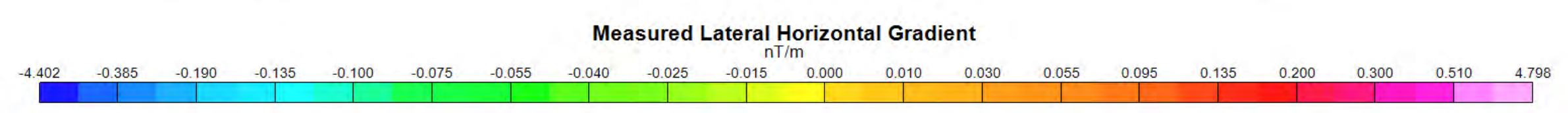
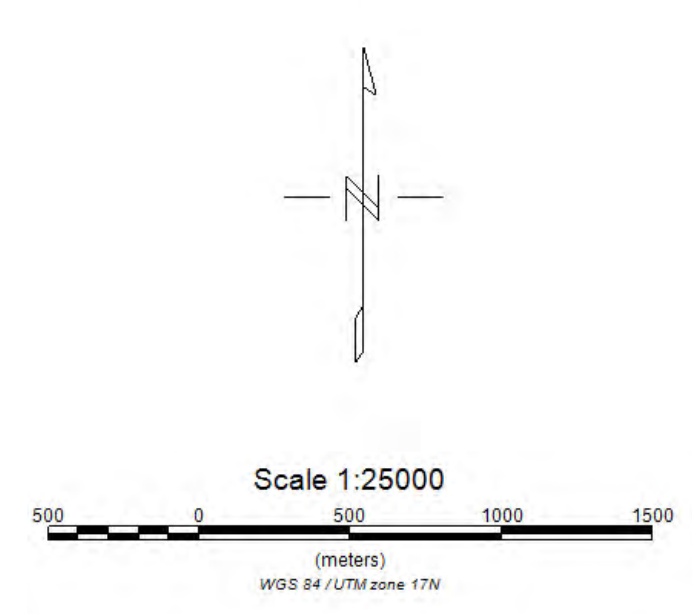
AIRBORNE MAGNETOMETERS (3)
 Magnetometers: Scintrex CS-3
 Magnetometer Sensitivity: +/- 0.005 nT
 Magnetometer Counter: RMS Instruments DAARC 500
 Installation: Wing tip pods, Tail stinger
 Wing Tip Separation: 13.2m
 Wing Center - Tail Magnetometer Separation: 8.87m
 Sampling Rate: 10Hz

GROUND INSTRUMENTATION
 Data Acquisition: Kroum VS Instruments SDAS V2
 Ground Magnetometer: Scintrex CS-3 Cesium Vapour
 GPS Receiver: Garmin, 1 Hz
 Base Station Location: Kirkland Lake Airport

PROCESSING SUMMARY
 MAGNETICS
 Diurnal correction
 Tie line levelling
 Micro levelling

- Legend**
- Client Claim Data
 - MNDM Claims
 - Client Area of Interest
 - Airborne Survey Area

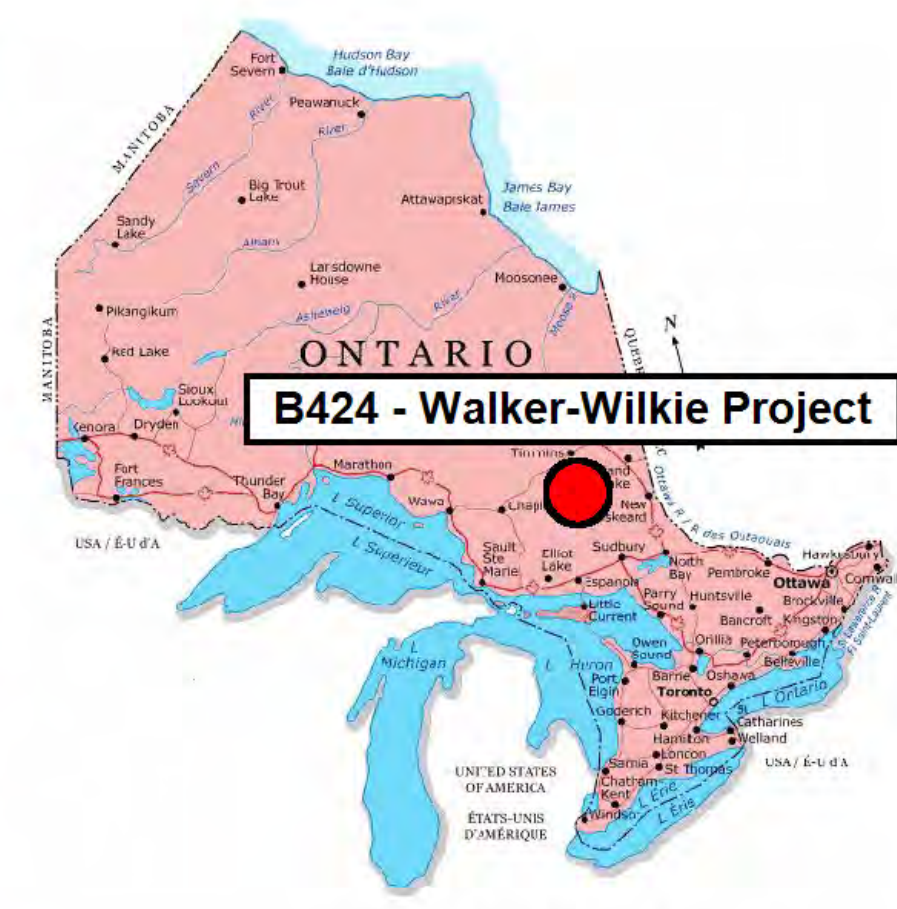
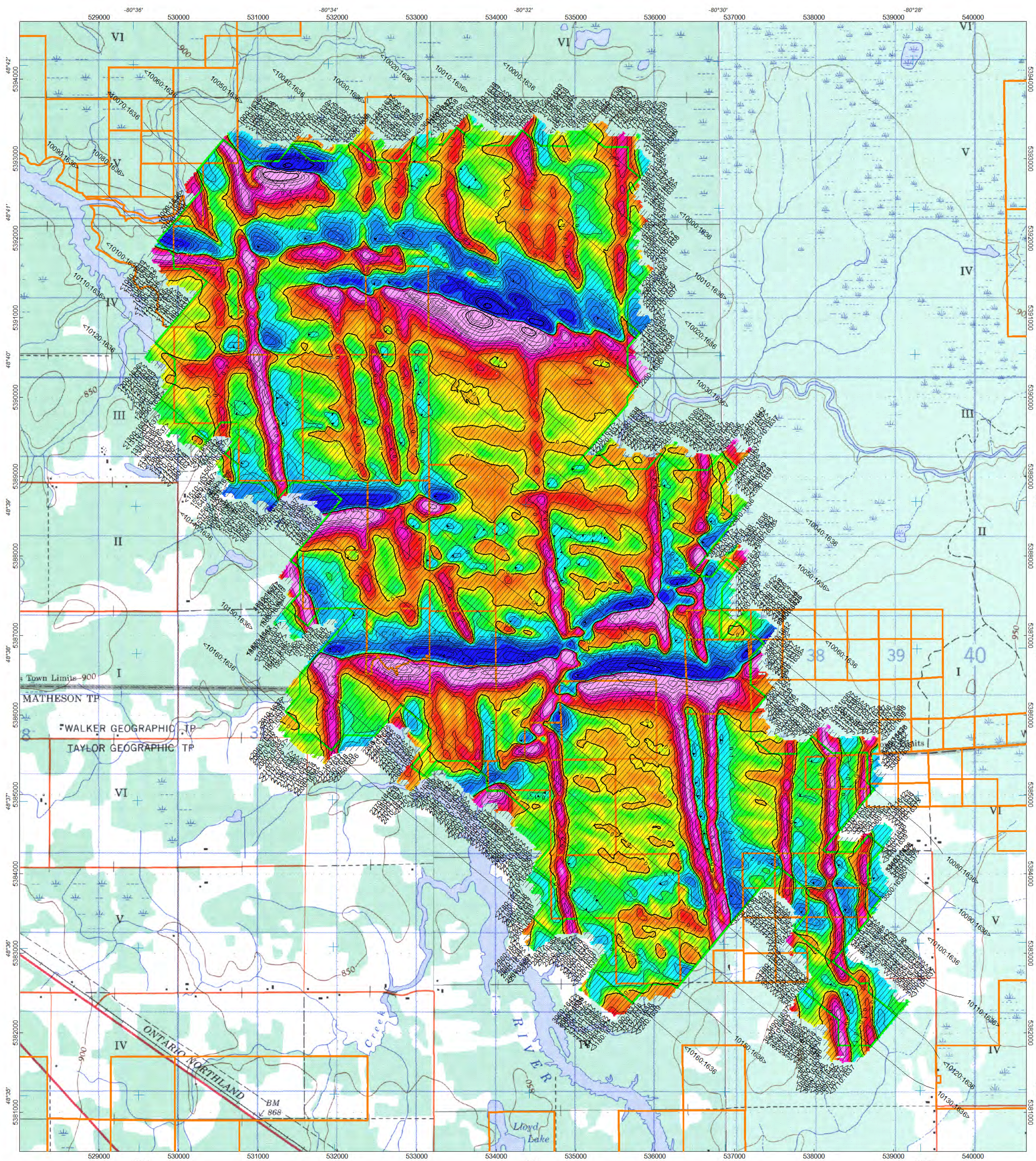
Contour Intervals (nT/m)
 0.1, 0.5, 2.5, 12.5



International Explorers and Prospectors

Walker-Wilkie Project
 Timmins, Ontario
MEASURED LATERAL HORIZONTAL GRADIENT

Survey Flown: April 18th - 27th 2014
 Data Acquired and Processed by TERRAQUEST LTD
TERRAQUEST LTD REF#: B424_05

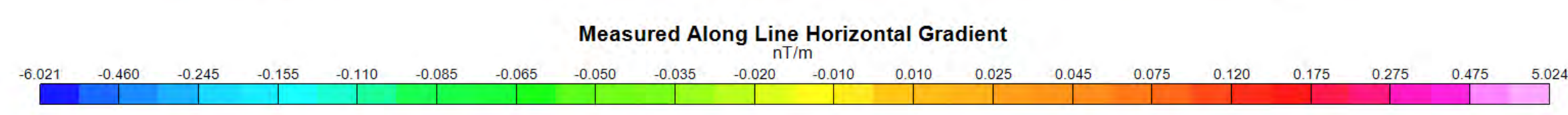
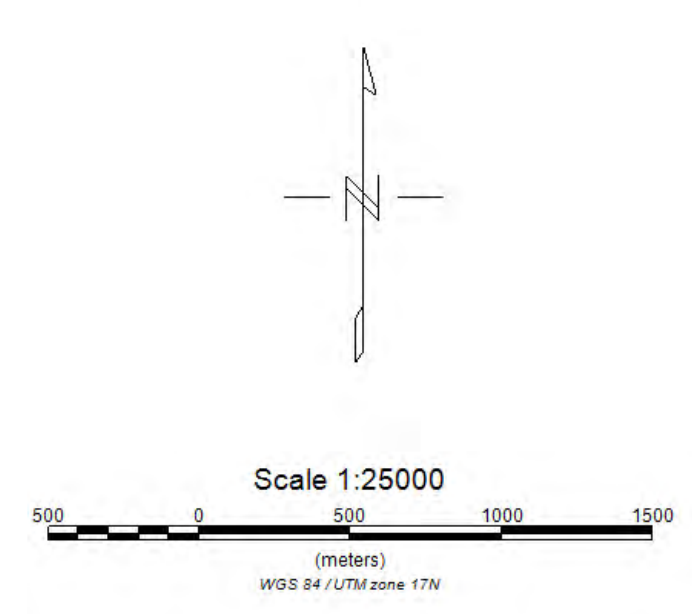


LOCATION MAP

- SURVEY SPECIFICATIONS**
 Survey Flown: April 18th - 27th 2014
 Survey Type: Fixed Wing Horizontal Magnetic Gradiometry
 Survey Operations Base: Kirkland Lake, Quebec
 Survey Line Azimuth: 040°/220°
 Control Line Azimuth: 130°/310°
 Survey Line Spacing: 50m
 Control Line Spacing: 500m
 Aircraft Mean Terrain Clearance: 72m
 Mean Ground Speed: 56 m/s
- AIRCRAFT SPECIFICATIONS**
 Aircraft Type: Cessna U206
 Aircraft Registration: C-GGLS
- AIRBORNE INSTRUMENTATION**
 Data Acquisition: RMS Instruments DAARC 500
 GPS Receiver: Trimble AgGPS 132
 GPS Real Time Correction: Omnistar
 Radar Altimeter: Bendix/King KRA-10A
 Barometric Altimeter: Honeywell
 Fluxgate Magnetometer: Billingsley Magnetics 3 Axial TFM 100-G2
 Navigation: AgNav Inc. LINAV
- AIRBORNE MAGNETOMETERS (3)**
 Magnetometers: Scintrex CS-3
 Magnetometer Sensitivity: +/- 0.005 nT
 Magnetometer Counter: RMS Instruments DAARC 500
 Installation: Wing tip pods, Tail stinger
 Wing Tip Separation: 13.2m
 Wing Center - Tail Magnetometer Separation: 8.87m
 Sampling Rate: 10Hz
- GROUND INSTRUMENTATION**
 Data Acquisition: Kroum VS Instruments SDAS V2
 Ground Magnetometer: Scintrex CS-3 Cesium Vapour
 GPS Receiver: Garmin, 1 Hz
 Base Station Location: Kirkland Lake Airport
- PROCESSING SUMMARY**
 MAGNETICS
 Diurnal correction
 Tie line levelling
 Micro levelling

- Legend**
- Client Claim Data
 - MNDM Claims
 - Client Area of Interest
 - Airborne Survey Area

Contour Intervals (nT/m)
 0.1, 0.5, 2.5, 12.5

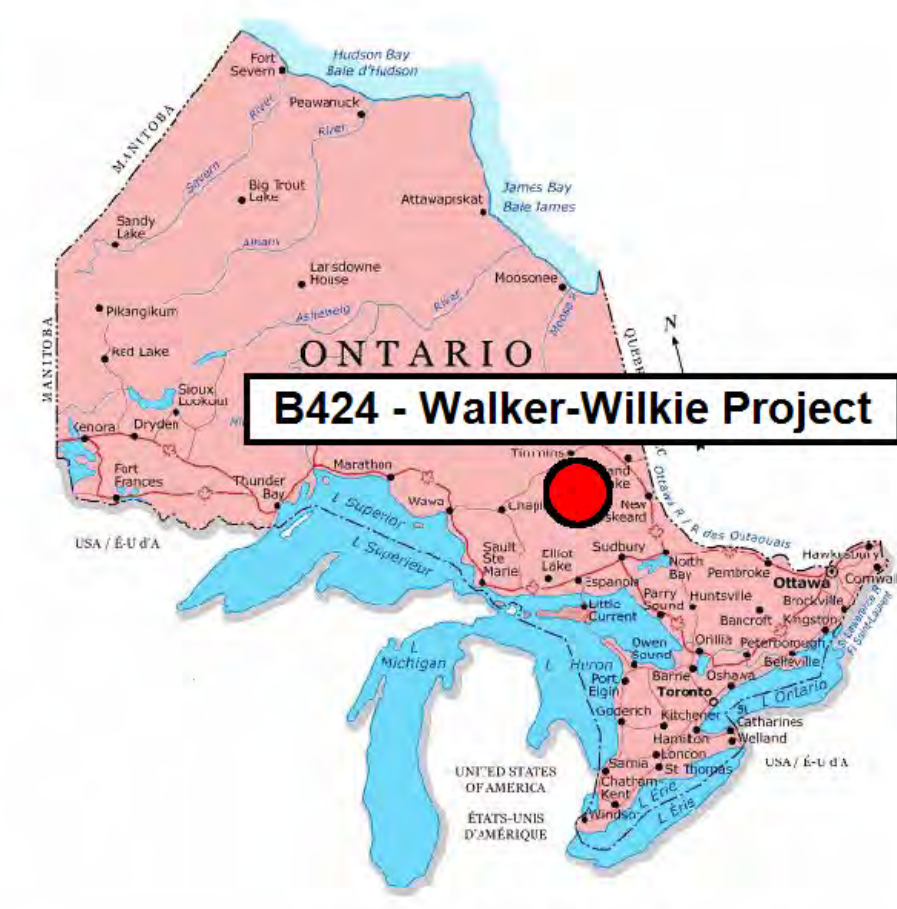
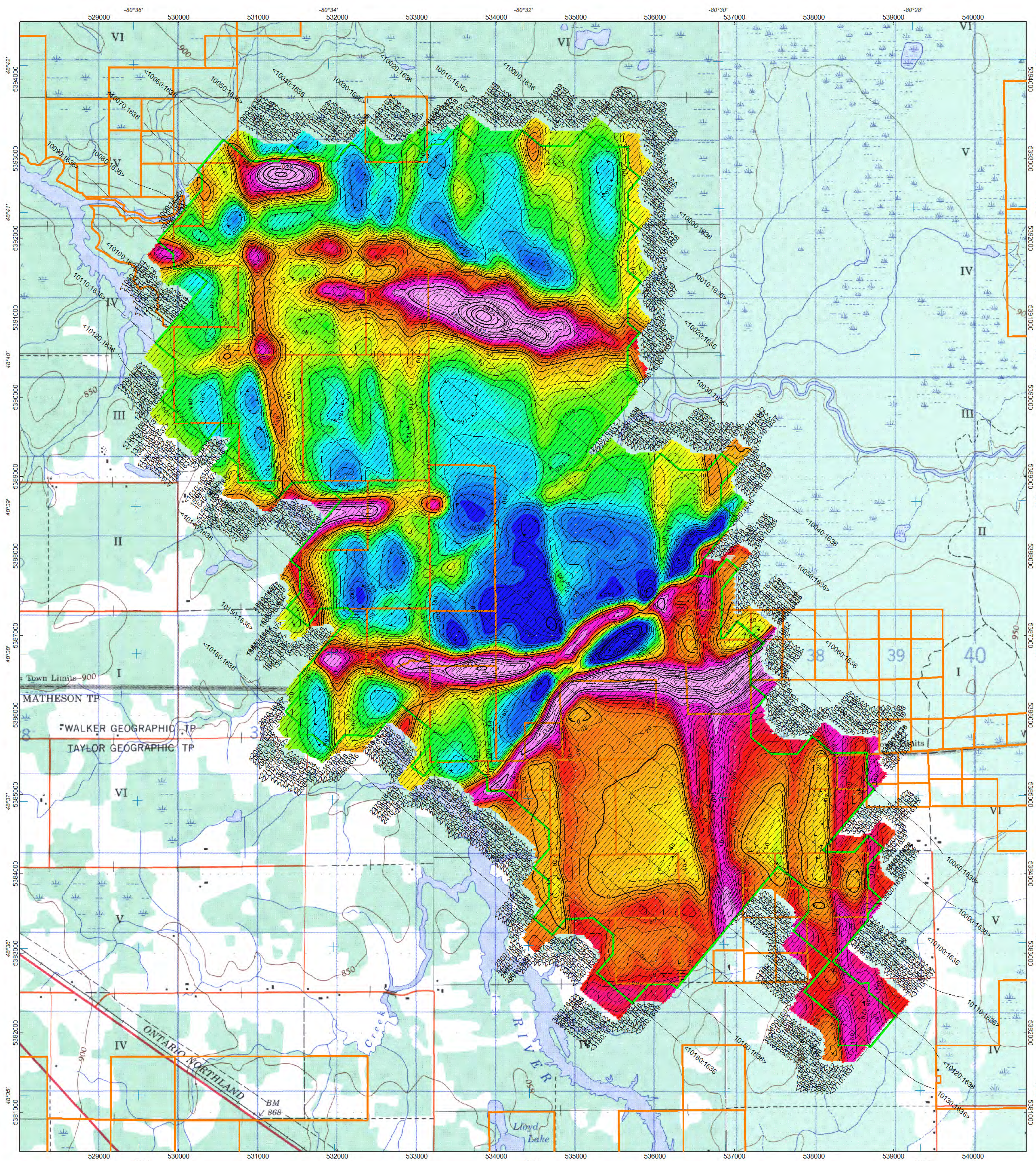


International Explorers and Prospectors

Walker-Wilkie Project
 Timmins, Ontario
MEASURED ALONG LINE HORIZONTAL GRADIENT

Survey Flown: April 18th - 27th 2014
 Data Acquired and Processed by TERRAQUEST LTD

TERRAQUEST LTD REF#: B424_06



LOCATION MAP

SURVEY SPECIFICATIONS
 Survey Flown: April 18th - 27th 2014
 Survey Type: Fixed Wing Horizontal Magnetic Gradiometry
 Survey Operations Base: Kirkland Lake, Quebec
 Survey Line Azimuth: 040°/220°
 Control Line Azimuth: 130°/310°
 Survey Line Spacing: 50m
 Control Line Spacing: 500m
 Aircraft Mean Terrain Clearance: 72m
 Mean Ground Speed: 56 m/s

AIRCRAFT SPECIFICATIONS
 Aircraft Type: Cessna U206
 Aircraft Registration: C-GGLS

AIRBORNE INSTRUMENTATION
 Data Acquisition: RMS Instruments DAARC 500
 GPS Receiver: Trimble AgGPS 132
 GPS Real Time Correction: Omnistar
 Radar Altimeter: Bendix/King KRA-10A
 Barometric Altimeter: Honeywell
 Fluxgate Magnetometer: Billingsley Magnetics 3 Axial TFM 100-G2
 Navigation: AgNav Inc. LINAV

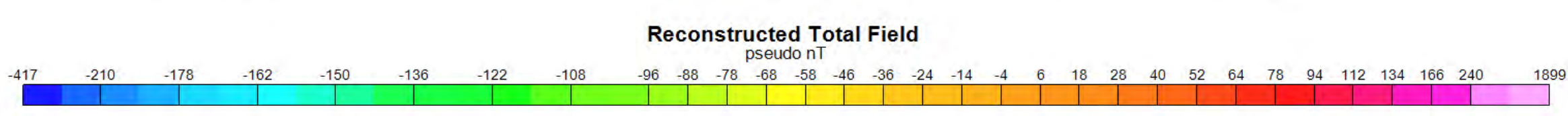
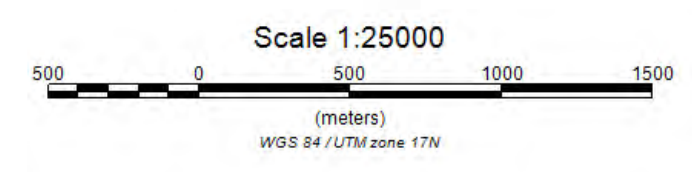
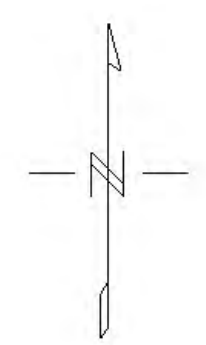
AIRBORNE MAGNETOMETERS (3)
 Magnetometers: Scintrex CS-3
 Magnetometer Sensitivity: +/- 0.005 nT
 Magnetometer Counter: RMS Instruments DAARC 500
 Installation: Wing tip pods, Tail stinger
 Wing Tip Separation: 13.2m
 Wing Center - Tail Magnetometer Separation: 8.87m
 Sampling Rate: 10Hz

GROUND INSTRUMENTATION
 Data Acquisition: Kroum VS Instruments SDAS V2
 Ground Magnetometer: Scintrex CS-3 Cesium Vapour
 GPS Receiver: Garmin, 1 Hz
 Base Station Location: Kirkland Lake Airport

PROCESSING SUMMARY
 MAGNETICS
 Diurnal correction
 Tie line levelling
 Micro levelling

- Legend**
- Client Claim Data
 - MNDM Claims
 - Client Area of Interest
 - Airborne Survey Area

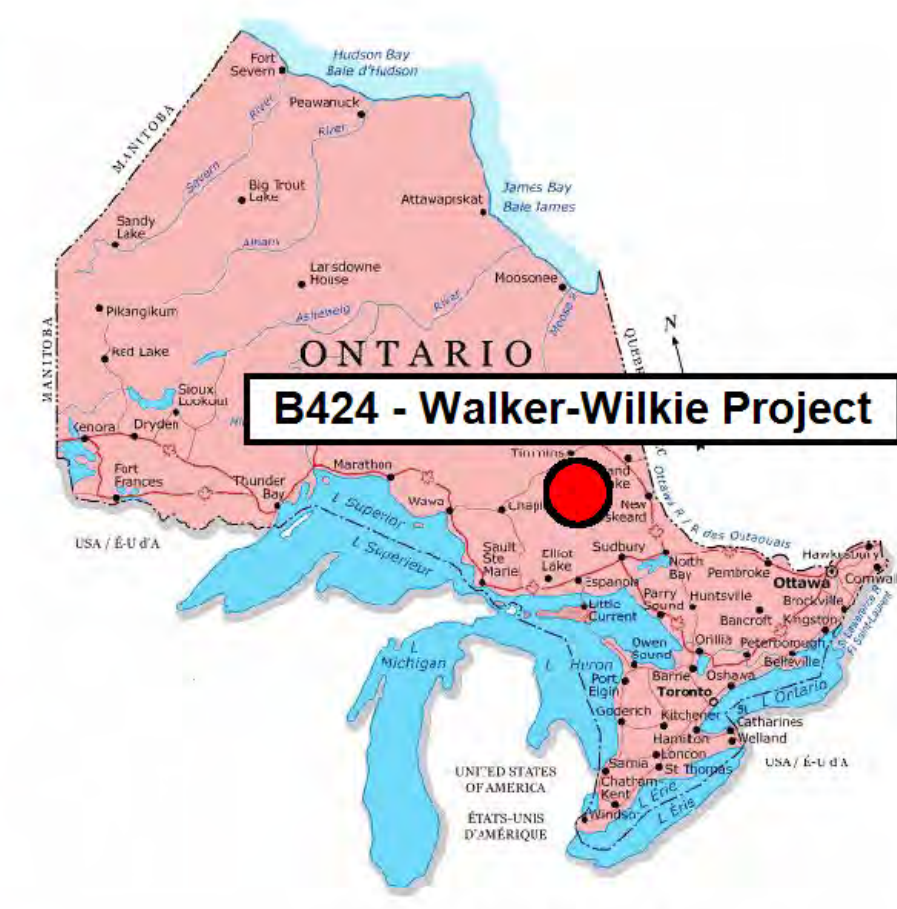
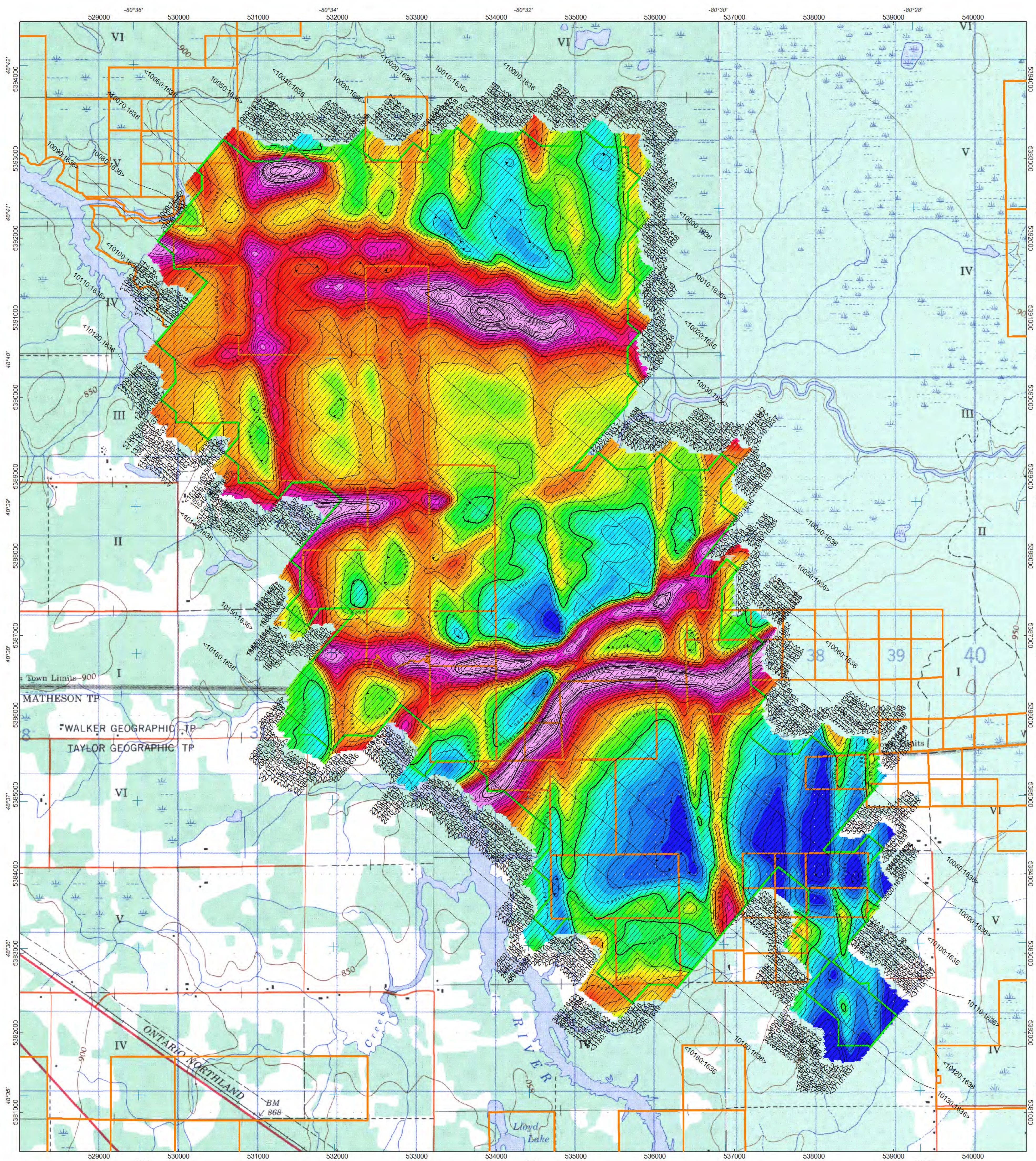
Contour Intervals (pseudo nT)
 20, 80, 320, 1280



International Explorers and Prospectors

**Walker-Wilkie Project
 Timmins, Ontario
 RECONSTRUCTED TOTAL FIELD**

Survey Flown: April 18th - 27th 2014
 Data Acquired and Processed by TERRAQUEST LTD



LOCATION MAP

SURVEY SPECIFICATIONS
 Survey Flown: April 18th - 27th 2014
 Survey Type: Fixed Wing Horizontal Magnetic Gradiometry
 Survey Operations Base: Kirkland Lake, Quebec
 Survey Line Azimuth: 040°/220°
 Control Line Azimuth: 130°/310°
 Survey Line Spacing: 50m
 Control Line Spacing: 500m
 Aircraft Mean Terrain Clearance: 72m
 Mean Ground Speed: 56 m/s

AIRCRAFT SPECIFICATIONS
 Aircraft Type: Cessna U206
 Aircraft Registration: C-GGLS

AIRBORNE INSTRUMENTATION
 Data Acquisition: RMS Instruments DAARC 500
 GPS Receiver: Trimble AgGPS 132
 GPS Real Time Correction: Omnistar
 Radar Altimeter: Bendix/King KRA-10A
 Barometric Altimeter: Honeywell
 Fluxgate Magnetometer: Billingsley Magnetics 3 Axial TFM 100-G2
 Navigation: AgNav Inc. LINAV

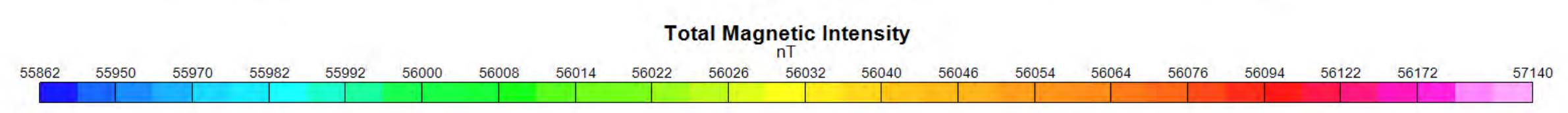
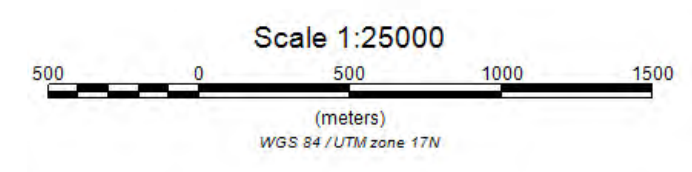
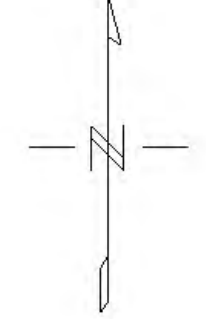
AIRBORNE MAGNETOMETERS (3)
 Magnetometers: Scintrex CS-3
 Magnetometer Sensitivity: +/- 0.005 nT
 Magnetometer Counter: RMS Instruments DAARC 500
 Installation: Wing tip pods, Tail stinger
 Wing Tip Separation: 13.2m
 Wing Center - Tail Magnetometer Separation: 8.87m
 Sampling Rate: 10Hz

GROUND INSTRUMENTATION
 Data Acquisition: Kroum VS Instruments SDAS V2
 Ground Magnetometer: Scintrex CS-3 Cesium Vapour
 GPS Receiver: Garmin, 1 Hz
 Base Station Location: Kirkland Lake Airport

PROCESSING SUMMARY
 MAGNETICS
 Diurnal correction
 Tie line levelling
 Micro levelling

- Legend**
- Client Claim Data
 - MNDM Claims
 - Client Area of Interest
 - Airborne Survey Area

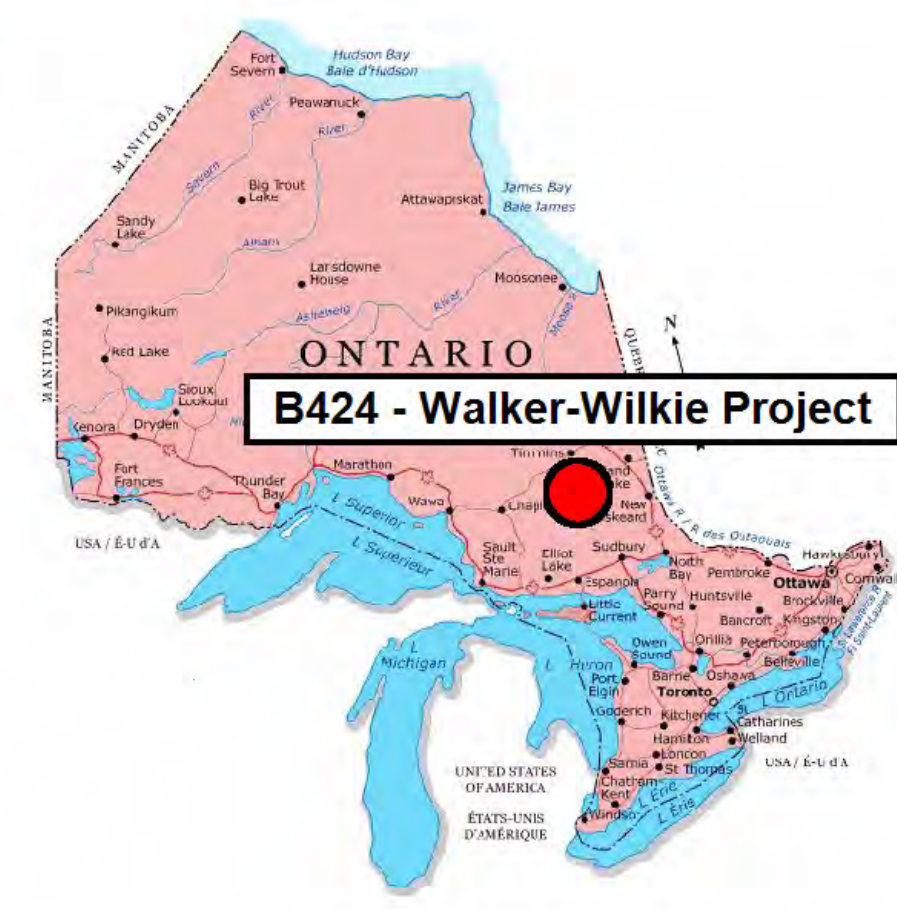
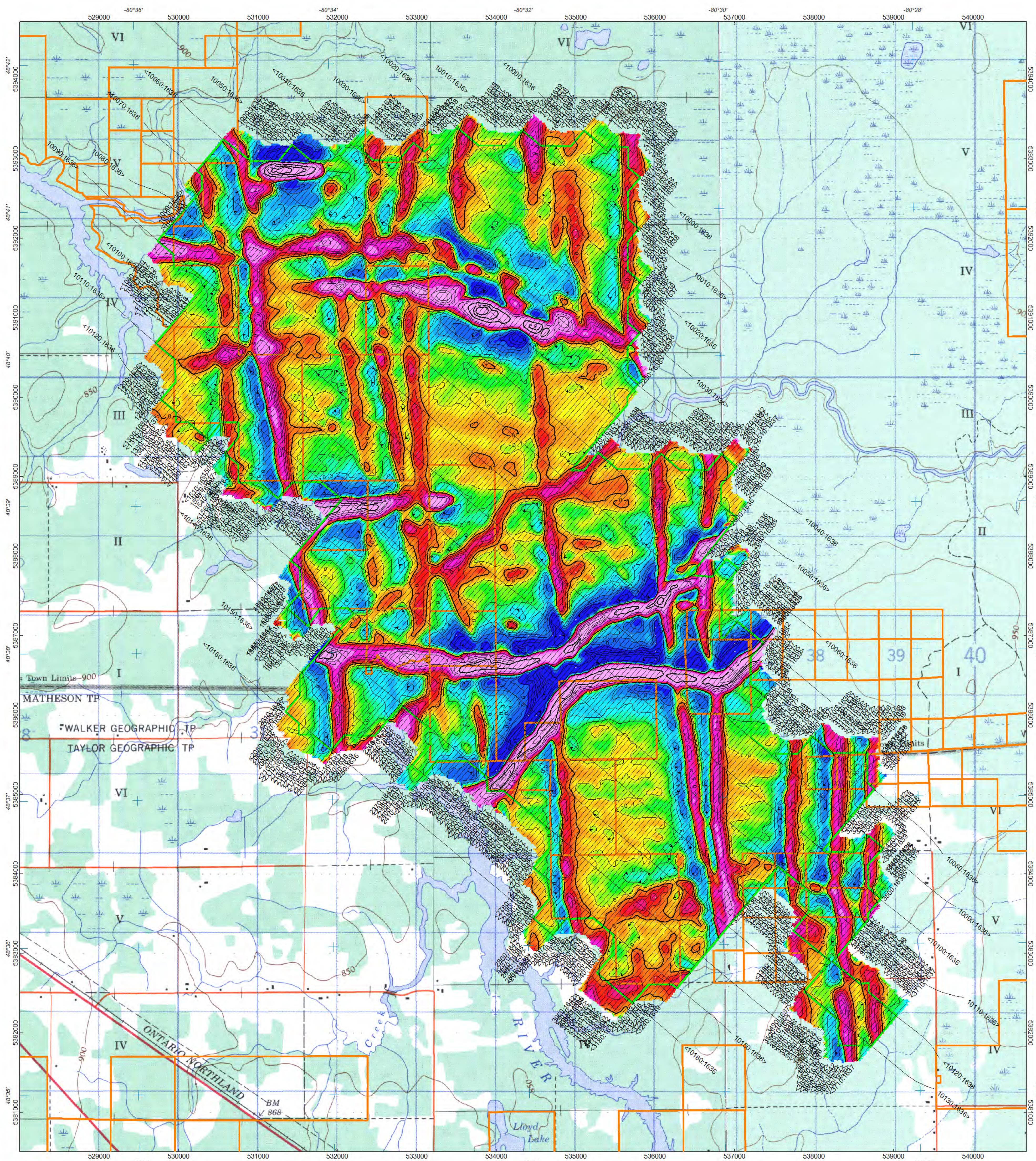
Contour Intervals (nT)
 20, 80, 320, 1280



International Explorers and Prospectors

**Walker-Wilkie Project
 Timmins, Ontario
 TOTAL MAGNETIC INTENSITY**

Survey Flown: April 18th - 27th 2014
 Data Acquired and Processed by TERRAQUEST LTD



LOCATION MAP

SURVEY SPECIFICATIONS
 Survey Flown: April 18th - 27th 2014
 Survey Type: Fixed Wing Horizontal Magnetic Gradiometry
 Survey Operations Base: Kirkland Lake, Quebec
 Survey Line Azimuth: 040°/220°
 Control Line Azimuth: 130°/310°
 Survey Line Spacing: 50m
 Control Line Spacing: 500m
 Aircraft Mean Terrain Clearance: 72m
 Mean Ground Speed: 56 m/s

AIRCRAFT SPECIFICATIONS
 Aircraft Type: Cessna U206
 Aircraft Registration: C-GGLS

AIRBORNE INSTRUMENTATION
 Data Acquisition: RMS Instruments DAARC 500
 GPS Receiver: Trimble AgGPS 132
 GPS Real Time Correction: Omnistar
 Radar Altimeter: Bendix/King KRA-10A
 Barometric Altimeter: Honeywell
 Fluxgate Magnetometer: Billingsley Magnetics 3 Axial TFM 100-G2
 Navigation: AgNav Inc. LINAV

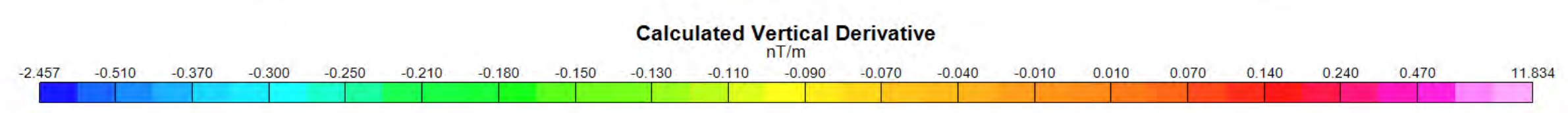
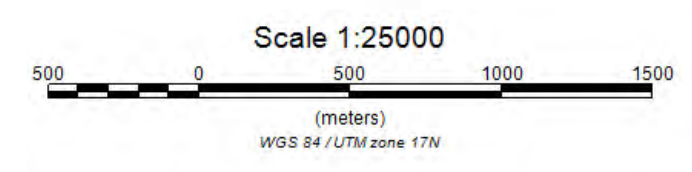
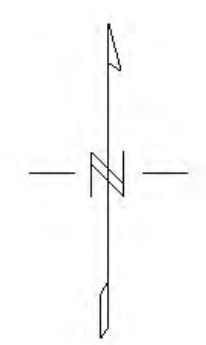
AIRBORNE MAGNETOMETERS (3)
 Magnetometers: Scintrex CS-3
 Magnetometer Sensitivity: +/- 0.005 nT
 Magnetometer Counter: RMS Instruments DAARC 500
 Installation: Wing tip, PDS, Tail stinger
 Wing Tip Separation: 13.2m
 Wing Center - Tail Magnetometer Separation: 8.87m
 Sampling Rate: 10Hz

GROUND INSTRUMENTATION
 Data Acquisition: Kroum VS Instruments SDAS V2
 Ground Magnetometer: Scintrex CS-3 Cesium Vapour
 GPS Receiver: Garmin, 1 Hz
 Base Station Location: Kirkland Lake Airport

PROCESSING SUMMARY
 MAGNETICS
 Diurnal correction
 Tie line levelling
 Micro levelling

- Legend**
- Client Claim Data
 - MNDM Claims
 - Client Area of Interest
 - Airborne Survey Area

Contour Intervals (nT/m)
 0.1, 0.5, 2.5, 12.5



International Explorers and Prospectors

Walker-Wilkie Project
 Timmins, Ontario
CALCULATED VERTICAL DERIVATIVE

Survey Flown: April 18th - 27th 2014
 Data Acquired and Processed by TERRAQUEST LTD