

Soil Samples As (PPM):

- 0.10 - 0.50
- 0.50 - 5.00
- 5.00 - 10.00
- 10.00 - 20.00
- 20.00 - 50.00
- 50.00 - 175.00

Legend:

- Roads
- Lakes
- Townships
- Claim Holder:
- Sanatana Resources Inc. 100% recorded owner
- Trelawney Mining and Exploration recorded owner

Sanatana Resources Inc.
Watershed Property, Ontario, Canada.

Scale

0 400 800 1,200 1,600 2,000 m

Projection: NAD 1983 UTM Zone 17N.

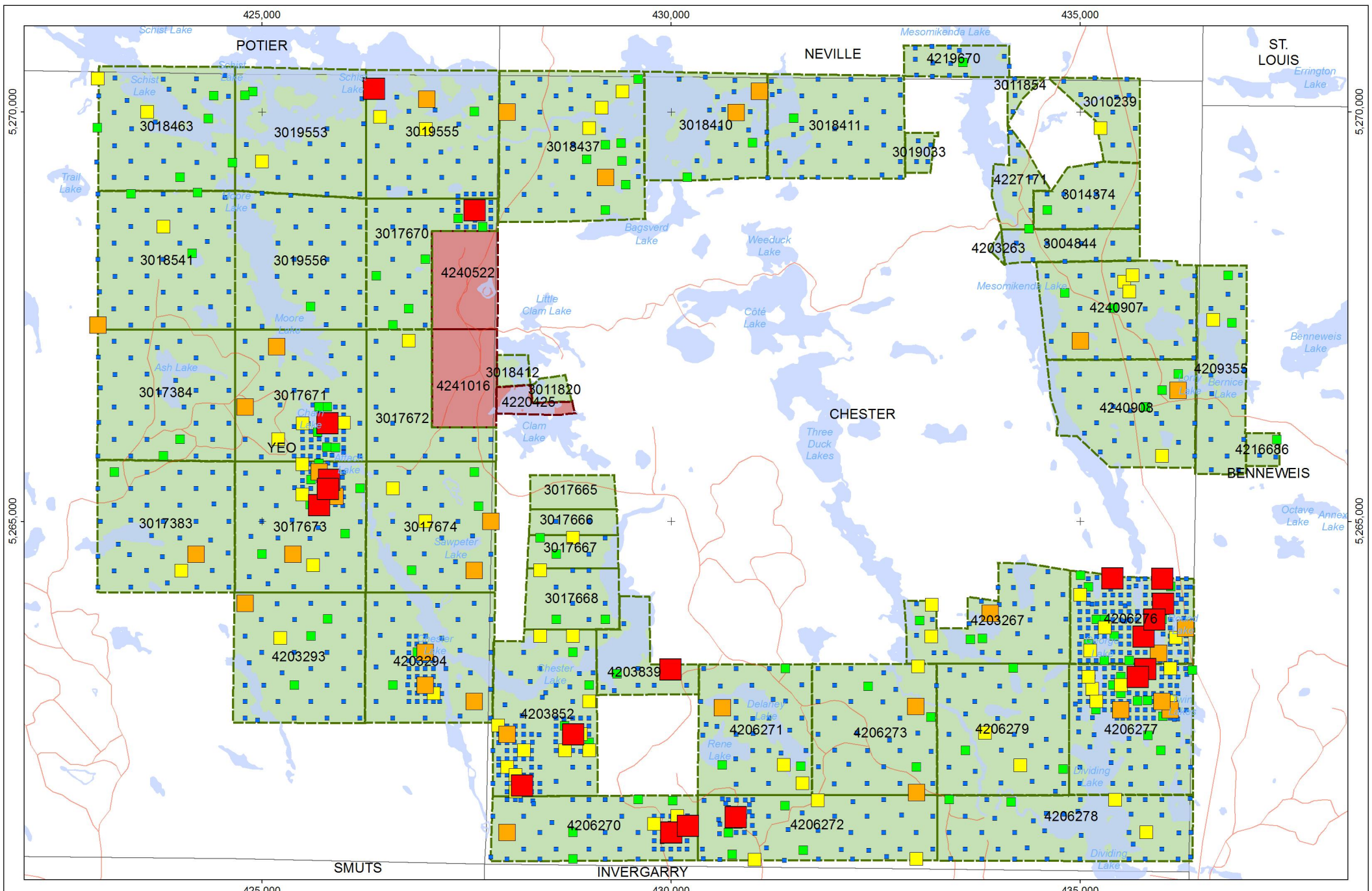
Data Sources: ESRI, MNDM, Sanatana Resources.

Sanatana Resources Inc.

Soil Sample Map: As
Watershed Property, Ontario, Canada.

Date: 15/8/14 Figure: Author: E. Ronacher, T. Gill

Caracle Creek



Legend:

Soil Samples Au (PPB):

- 0.0 - 0.003
- 0.003 - 0.005
- 0.005 - 0.010
- 0.010 - 0.020
- 0.020 - 0.40

Claim Holder:

- Sanatana Resources Inc. 100% recorded owner
- Trelawney Mining and Exploration recorded owner

Other Features:

- Roads
- Lakes
- Townships

Sanatana Resources Inc.
Watershed Property, Ontario, Canada.

Scale

0 400 800 1,200 1,600 2,000 m

Projection: NAD 1983 UTM Zone 17N.

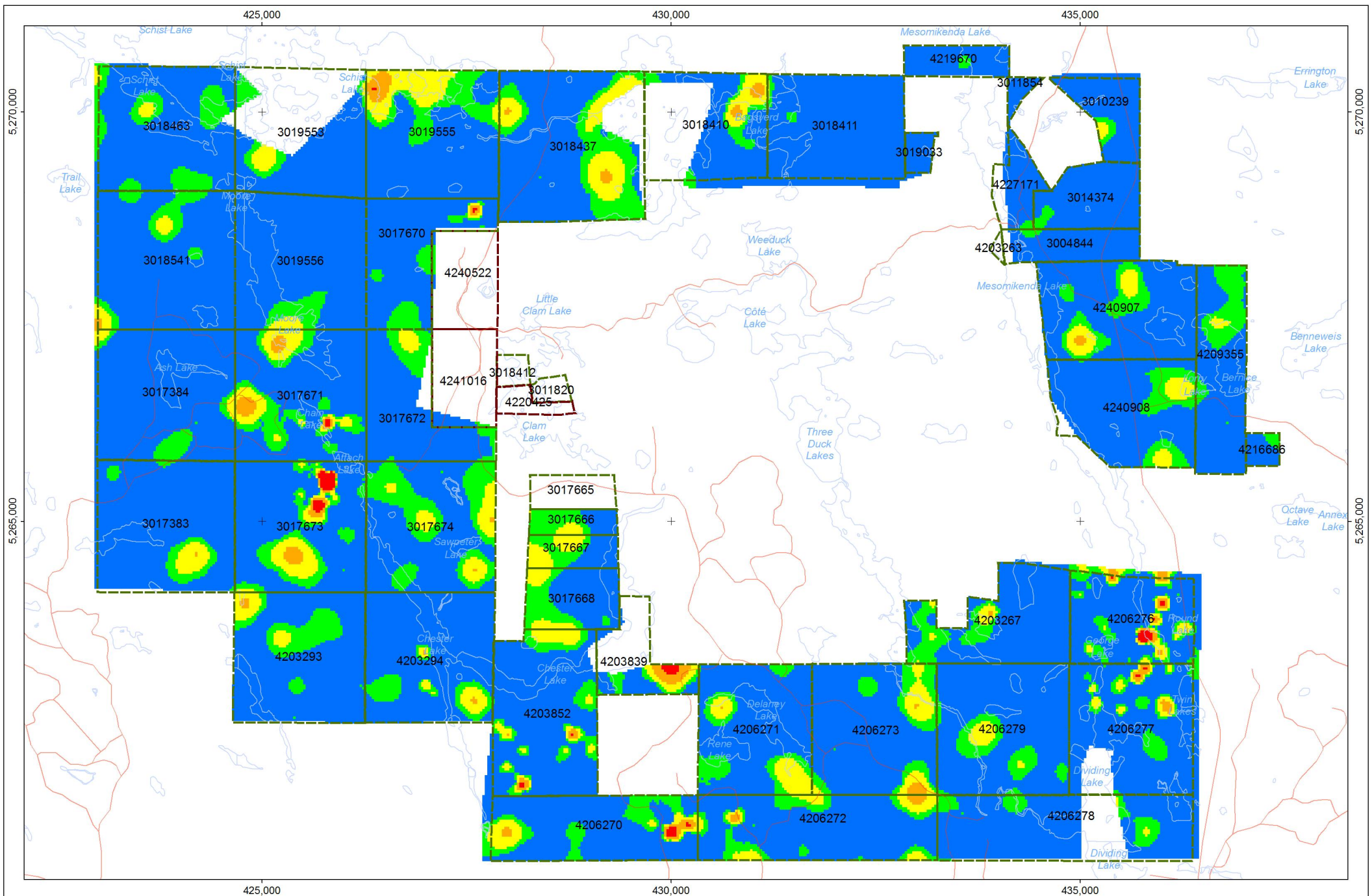
Data Sources: ESRI, MNDM, Sanatana Resources.

Sanatana Resources Inc.

Soil Sample Map: Au
Watershed Property, Ontario, Canada.

Date: 15/8/14 Figure: Author: E. Ronacher, T. Gill

Caracle Creek



Legend:

- Roads
- Lakes
- Claim Holder:**
- Sanatana Resources Inc. 100% recorded owner
- Trelawney Mining and Exploration recorded owner

Soil Samples Au (PPB): Krigging

- 0.0 - 0.003
- 0.003 - 0.005
- 0.005 - 0.010
- 0.010 - 0.020
- 0.020 - 0.40

Sanatana Resources Inc.
Watershed Property, Ontario, Canada.

N
W E
S

Scale
0 400 800 1,200 1,600 2,000 m
Projection: NAD 1983 UTM Zone 17N.

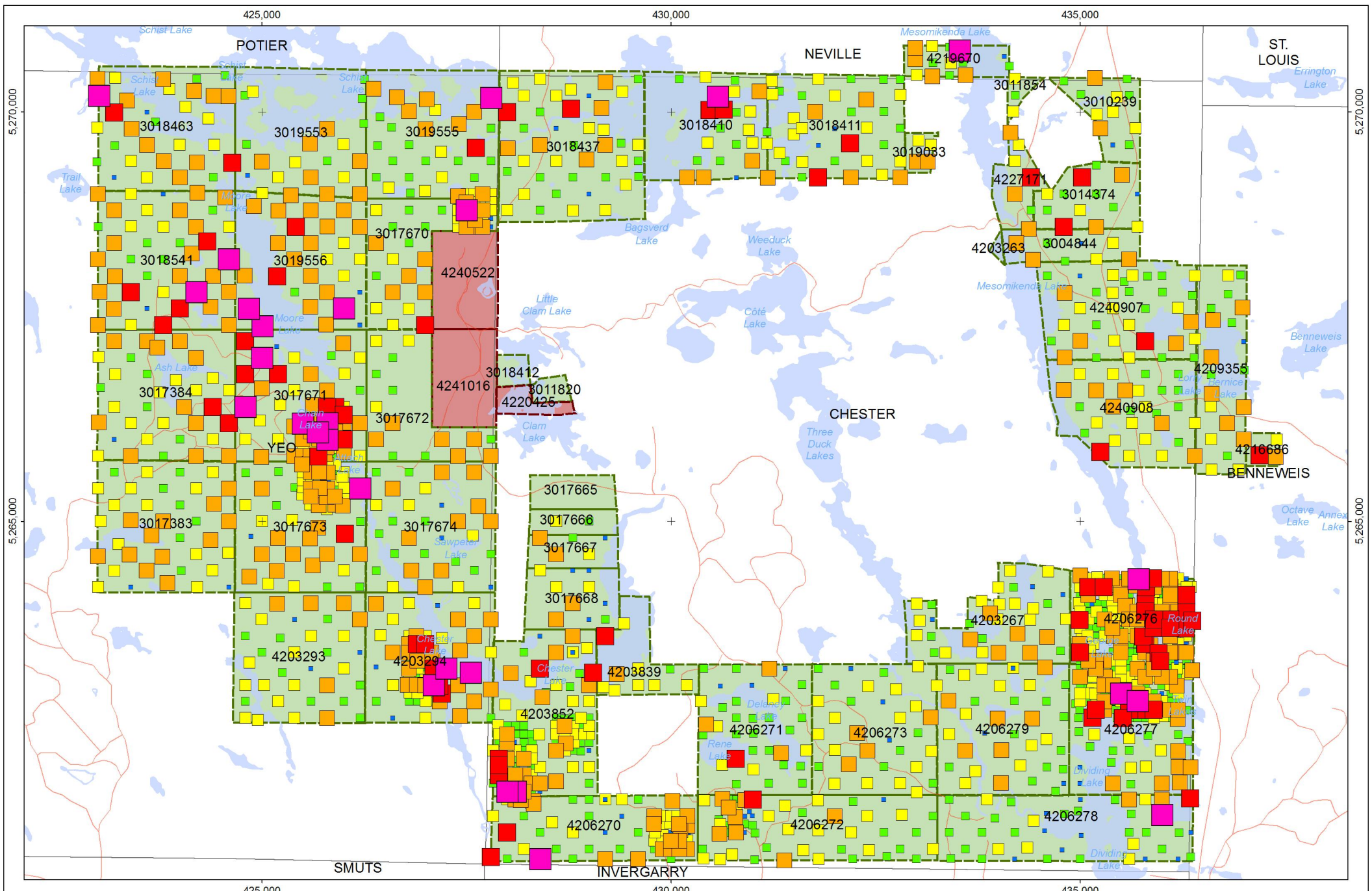
Data Sources: ESRI, MNM, Sanatana Resources.

Sanatana Resources Inc.

Gridded Au Soil Samples (Krigging)
Watershed Property, Ontario, Canada.

Date: 15/8/14 Figure: Author: E. Ronacher, T. Gill

Caracle Creek



Soil Samples Bi (PPM):

- 0.02 - 0.06
- 0.06 - 0.08
- 0.08 - 0.10
- 0.10 - 0.15
- 0.15 - 0.20
- 0.20 - 0.47

Claim Holder:

- Sanatana Resources Inc. 100% recorded owner
- Trelawney Mining and Exploration recorded owner

Other Features:

- Roads
- Lakes
- Townships

Sanatana Resources Inc.
Watershed Property, Ontario, Canada.

N
E
S
W

Scale
0 400 800 1,200 1,600 2,000 m
Projection: NAD 1983 UTM Zone 17N.

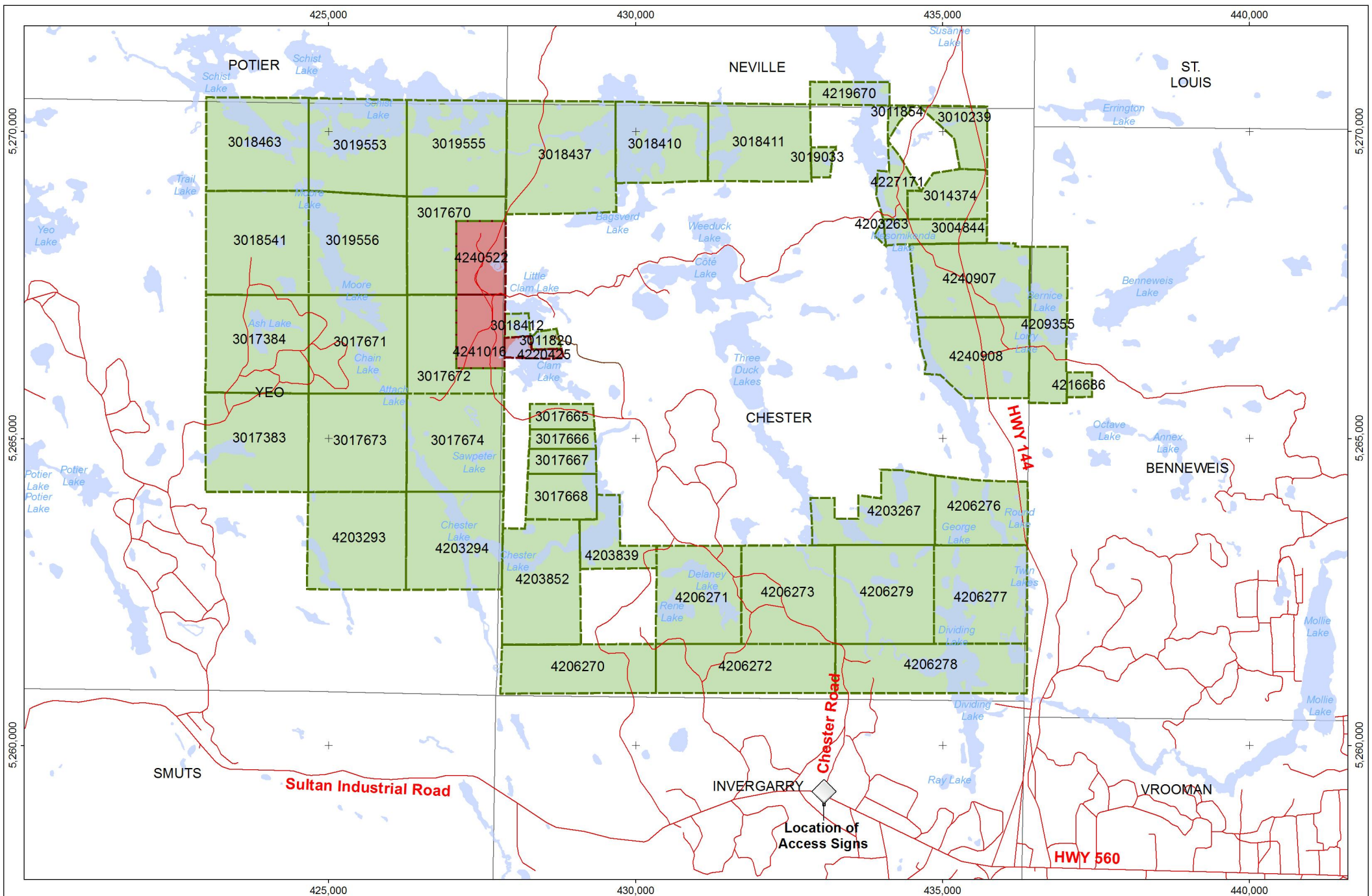
Data Sources: ESRI, MNDM, Sanatana Resources.

Sanatana Resources Inc.

Soil Sample Map: Bi
Watershed Property, Ontario, Canada.

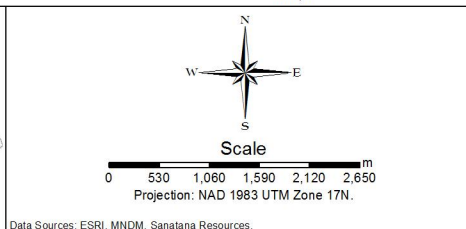
Date: 15/8/14 Figure: Author: E. Ronacher, T. Gill

Caracle Creek



- Legend:
- Claim Holder:
- Sanatana Resources Inc. 100% recorded owner
 - Trelawney Mining and Exploration recorded owner

- Roads
- Field Trails
- Lakes
- Townships



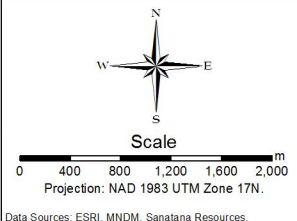
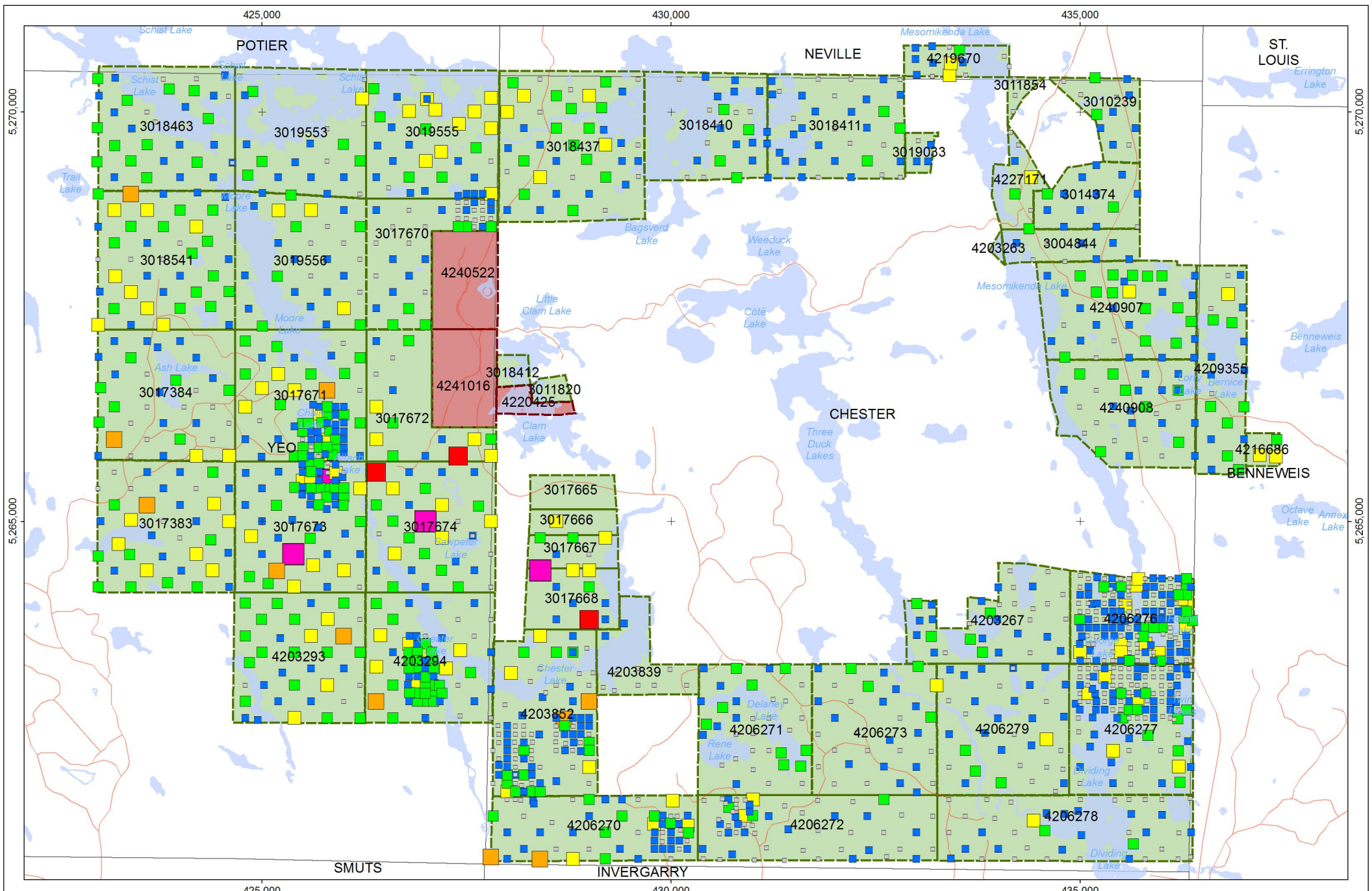
Sanatana Resources Inc.

Tenure Map,
Watershed Property, Ontario, Canada.

Date: 06/8/14 Figure: Office/Author: Van/Gen

Caracle Creek

Data Sources: ESRI, MNDM, Sanatana Resources.



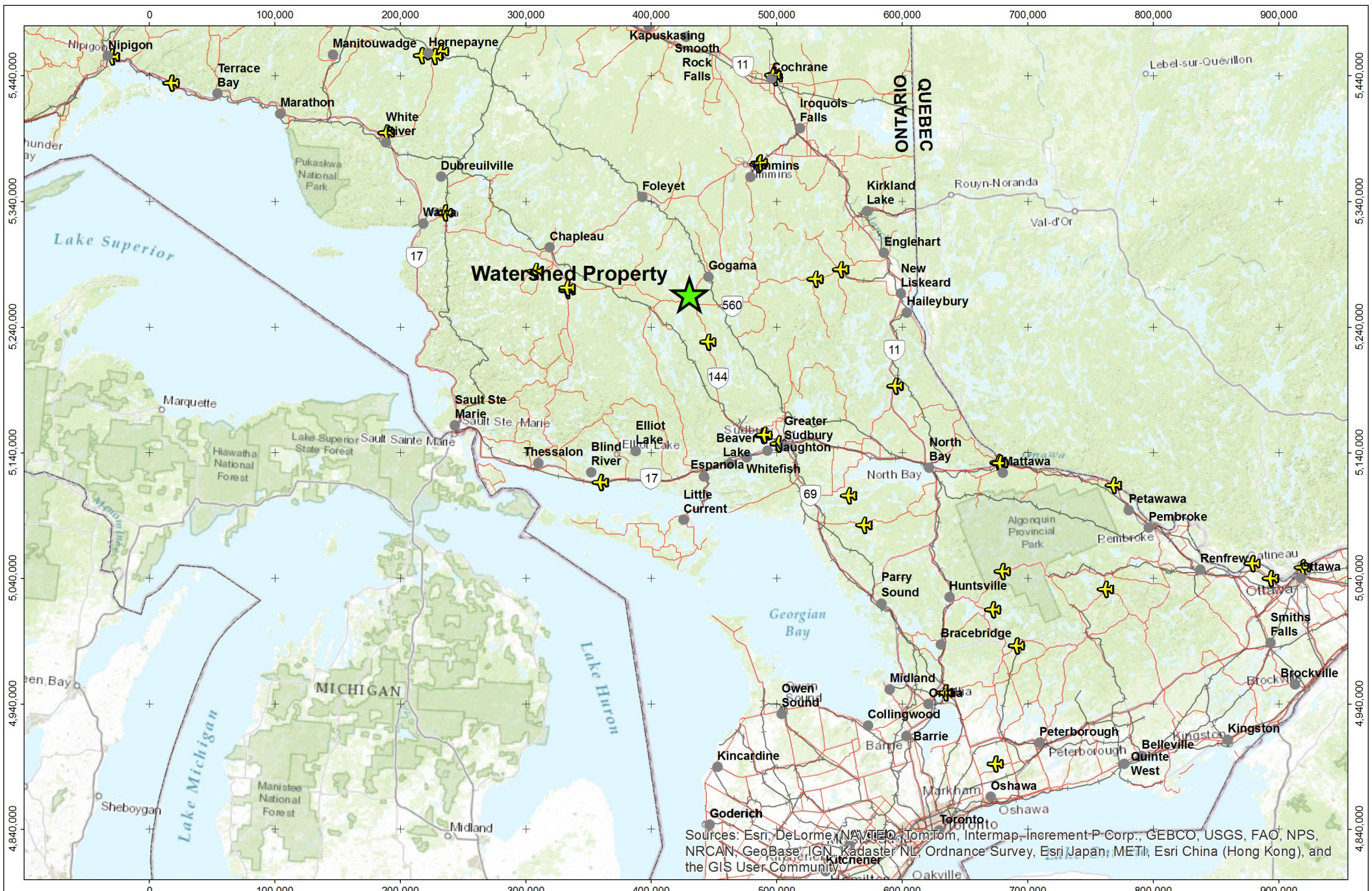
Sanatana Resources Inc.

Soil Sample Map: Cu
Watershed Property, Ontario, Canada.

Date: 15/8/14 Figure: Author: E. Ronacher, T. Gill

CCIC Caracle Creek

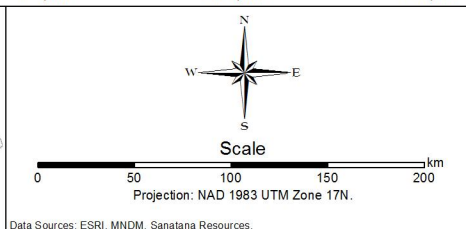
Date Sources: ESRI, MDM, Sanatana Resources



Sources: Esri, DeLorme, NAVTEQ, TomTom, Intermap, Increment P Corp., GEBCO, USGS, FAO, NPS, NRCAN, GeoBase, IGN, Kadaster NL, Ordnance Survey, Esri Japan, METI, Esri China (Hong Kong), and the GIS User Community

Legend:

- Watershed Property
- Populated Places
- Roads
- Airport/Runway
- Rail Lines
- Borders



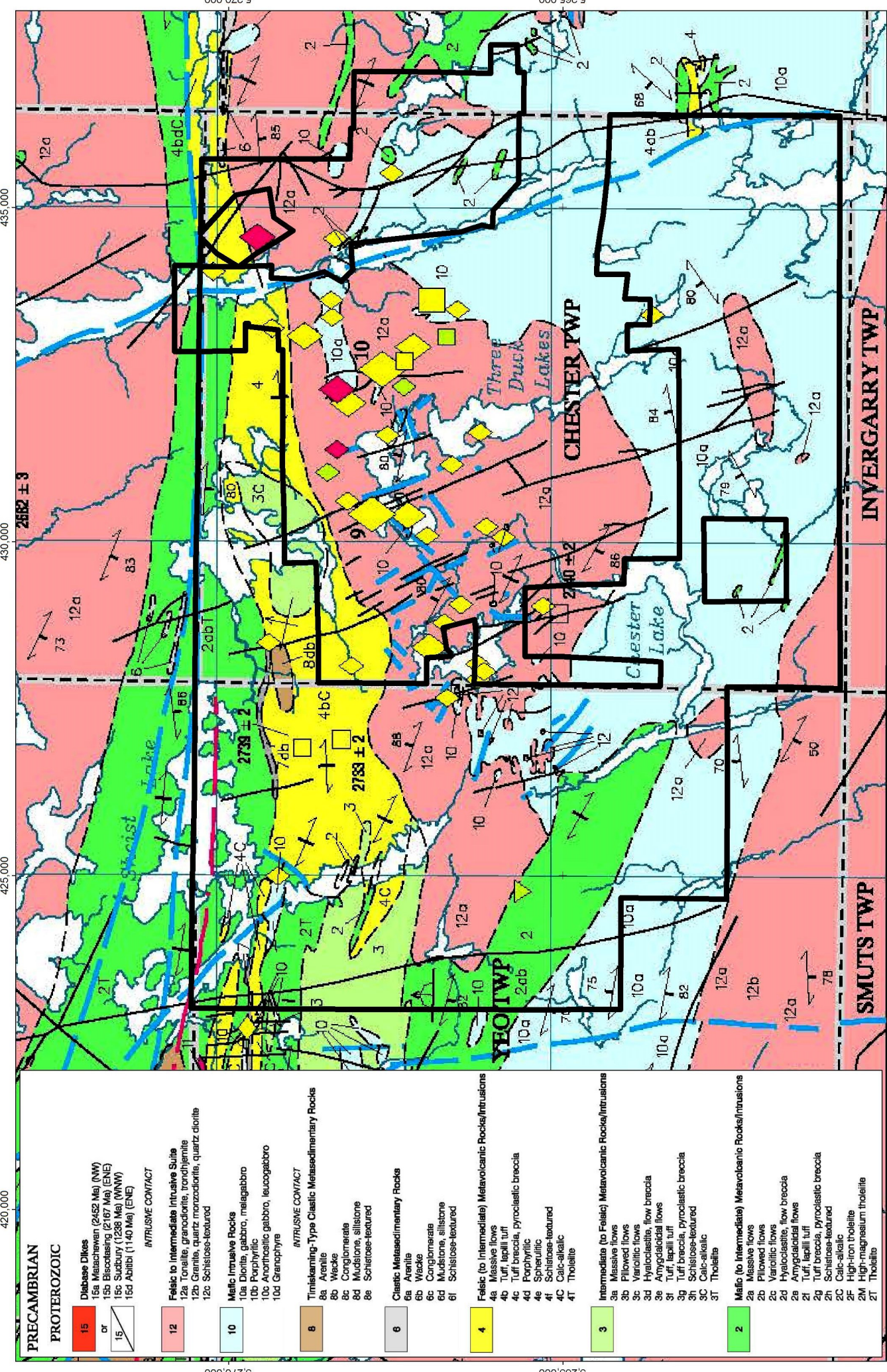
Sanatana Resources Inc.

Location Map,
Watershed Property, Ontario, Canada.

Date: 27/6/14 Figure: Office/Author: Van/Gen

Caracle Creek

Data Sources: ESRI, MNDM, Sanatana Resources.



420,000 430,000 435,000

420,000 430,000 435,000

PRECAMBRIAN

PROTEROZOIC

- 15 Diabase Dikes
- 15a Micauchewan (2450 Ma) (NW)
- 15b Biscanasing (2167 Ma) (ENE)
- 15c Sudbury (1288 Ma) (WNW)
- 15d Aoliba (1140 Ma) (ENE)

INTRUSIVE CONTACT

- 12 Felcic to Intermediate Intrusive Suite
- 12a Tonalle, granodiorite, trondhjemite
- 12b Granite, quartz monzodiorite, quartz diorite
- 12c Schistose-textured

Mafic Intrusive Rocks

- 10a Diorite, gabbro, melagabbro
- 10b Porphyritic
- 10c Anorthositic gabbro, leucogabbro
- 10d Granophyre

INTRUSIVE CONTACT

Timiskaming-Type Clastic Metasedimentary Rocks

- 8a Arenite
- 8b Wecke
- 8c Conglomerate
- 8d Mudstone, siltstone
- 8e Schistose-textured

Clastic Metasedimentary Rocks

- 6a Arenite
- 6b Wecke
- 6c Conglomerate
- 6d Mudstone, siltstone
- 6f Schistose-textured

Felsic (to Intermediate) Metavolcanic Rocks/Intrusions

- 4a Massive flows
- 4b Tuff, lapilli tuff
- 4c Tuff breccia, pyroclastic breccia
- 4d Porphyritic
- 4e Sphenulitic
- 4f Schistose-textured
- 4C Calc-alkalic
- 4T Tholeiitic

Intermediate (to Felcic) Metavolcanic Rocks/Intrusions

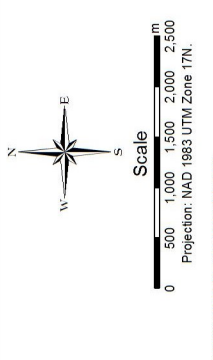
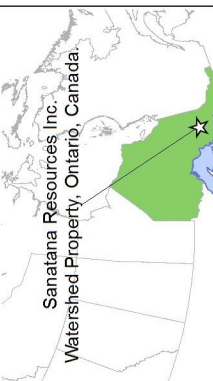
- 3a Massive flows
- 3b Pillowed flows
- 3c Volcanic flows
- 3d Hyaloclastite, flow breccia
- 3e Amygdaloidal flows
- 3f Tuff, lapilli tuff
- 3g Tuff breccia, pyroclastic breccia
- 3h Schistose-textured
- 3C Calc-alkalic
- 3T Tholeiitic

Mafic (to Intermediate) Metavolcanic Rocks/Intrusions

- 2a Massive flows
- 2b Pillowed flows
- 2c Volcanic flows
- 2d Hyaloclastite, flow breccia
- 2e Amygdaloidal flows
- 2f Tuff, lapilli tuff
- 2g Tuff breccia, pyroclastic breccia
- 2h Schistose-textured
- 2C Calc-alkalic
- 2F High-iron tholeiite
- 2M High-magnesium tholeiite
- 2T Tholeiitic

- Mineral Deposit Type**
- Felcic to Intermediate Intrusion-Associated Deposits
 - ◆ Vein/Replacement Deposits
 - ▲ Volcanic-Associated Deposits
- Mineral Deposit Commodity***
- Ag ± (Au, Cu, Pb, Zn, Mo, Co, Ni, Fe)
 - Au ± (Ag, Cu, Bi, Mo, Pb, Zn, asbe)
 - Cu ± (Ag, Au, gras, Ni, Pt, Zn, Fe, Mo, Pb)

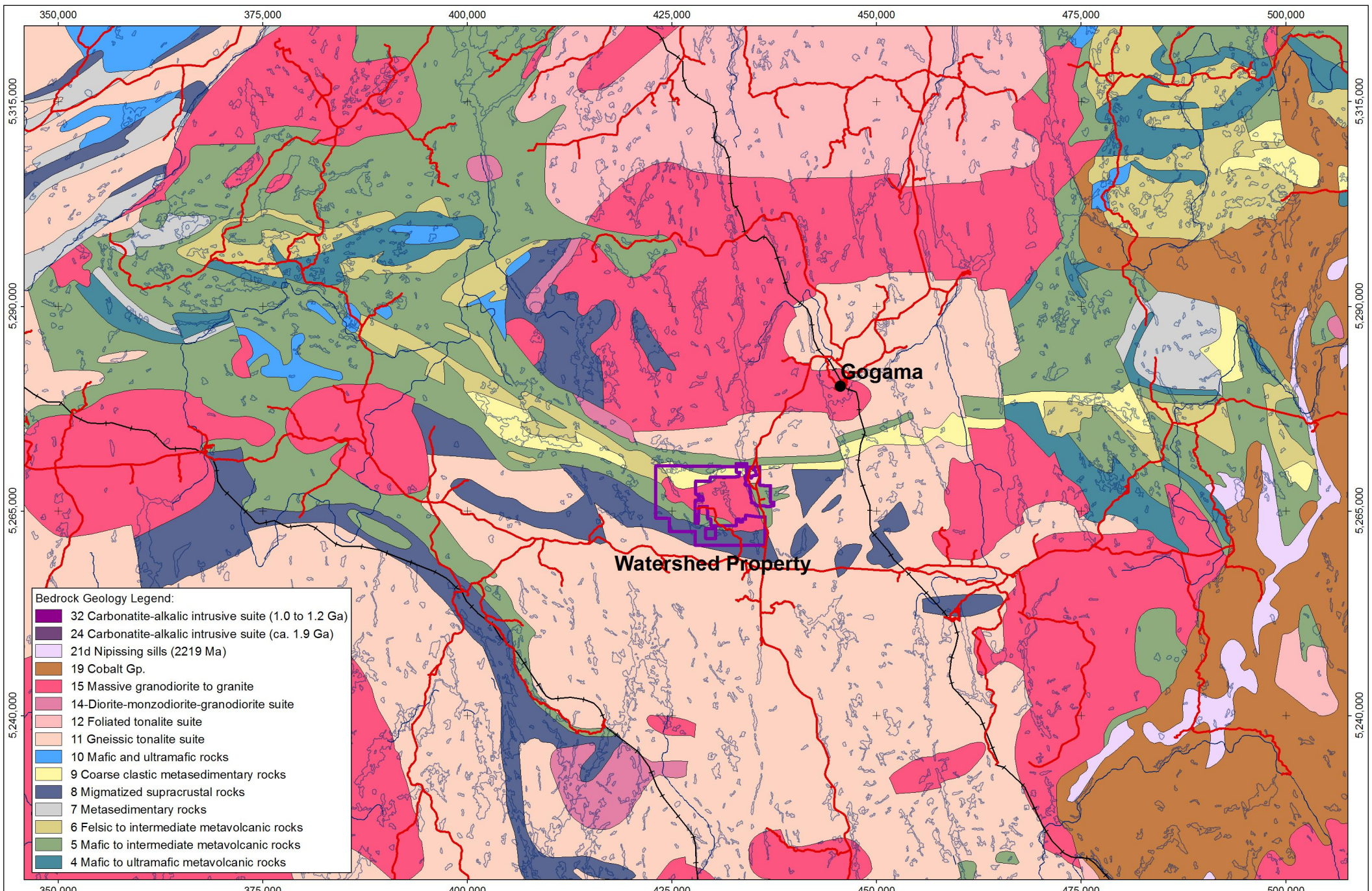
- Symbols:**
- Dikes
 - Faults
 - Lakes/Ponds
 - ▭ Townships
 - ▭ Watershed Property Outline



Sanatana Resources Inc.

Property Geology Map,
Watershed Property, Ontario, Canada

Date: 02/7/14 | Figure: | Office/Author:

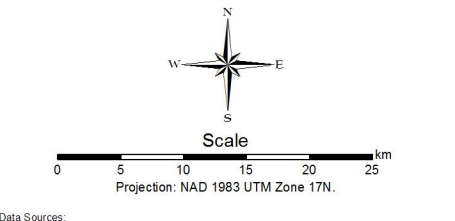


Bedrock Geology Legend:

32 Carbonatite-alkalic intrusive suite (1.0 to 1.2 Ga)
24 Carbonatite-alkalic intrusive suite (ca. 1.9 Ga)
21d Nipissing sills (2219 Ma)
19 Cobalt Gp.
15 Massive granodiorite to granite
14-Diorite-monzodiorite-granodiorite suite
12 Foliated tonalite suite
11 Gneissic tonalite suite
10 Mafic and ultramafic rocks
9 Coarse clastic metasedimentary rocks
8 Migmatized supracrustal rocks
7 Metasedimentary rocks
6 Felsic to intermediate metavolcanic rocks
5 Mafic to intermediate metavolcanic rocks
4 Mafic to ultramafic metavolcanic rocks

Legend:

● Cities/Towns	— Roads	□ Lakes/Ponds
— Rail Lines	— Rivers/Streams	□ Watershed Property Outline



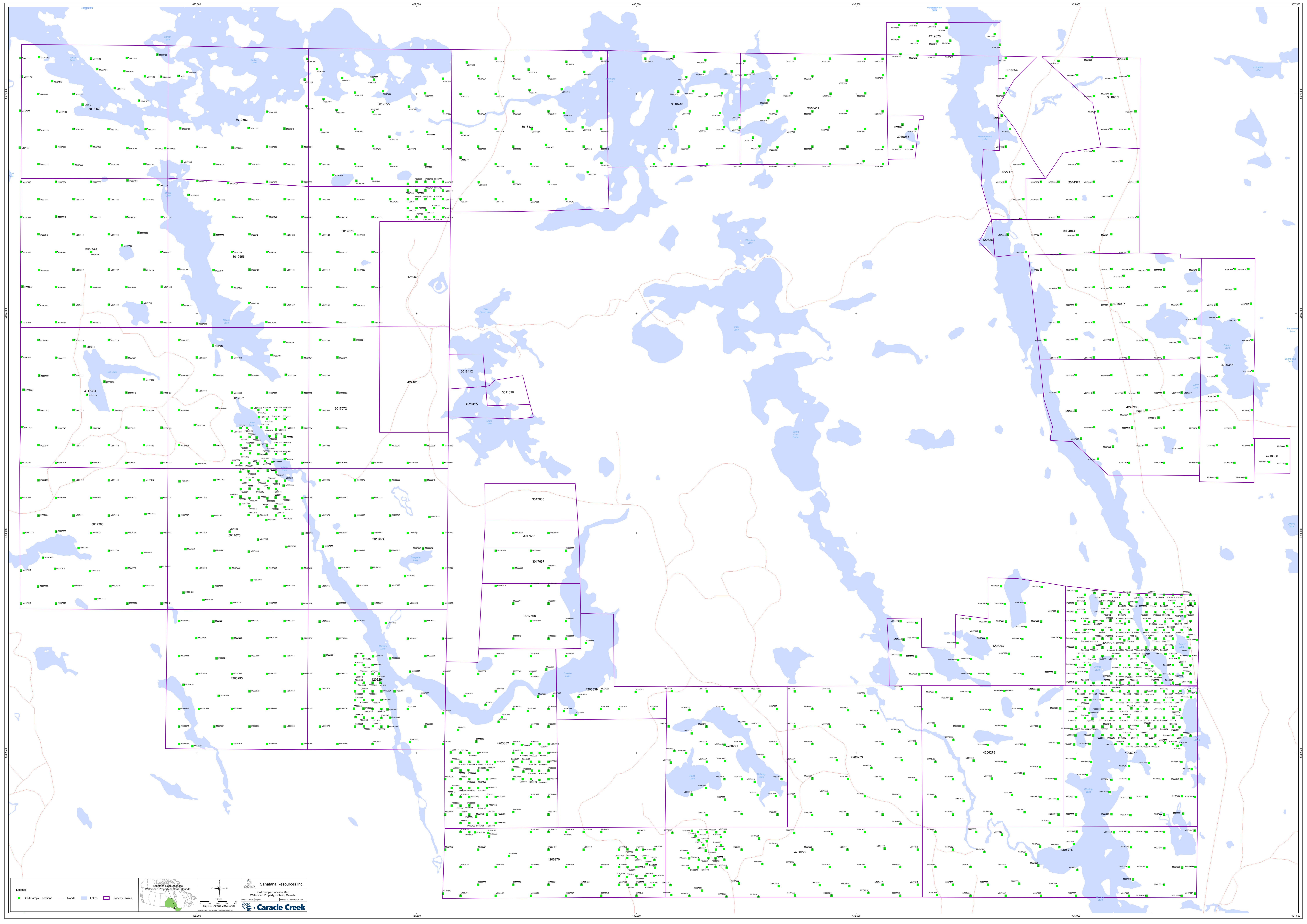
Sanatana Resources Inc.

Regional Geology Map,
Watershed Property, Ontario, Canada

Date: 27/6/14 | Figure: | Office/Author: Owner

Caracle Creek

Data Sources:



Legend:
■ Soil Sample Locations
— Roads
— Lakes
— Property Claims

Sanatana Resources Inc.
4200278
Soil Sample Location Map
Wabigoon Property, Ontario, Canada
Scale
1:50,000
North Arrow
Carade Creek
4200278