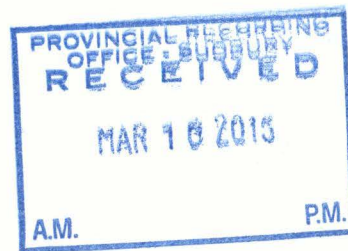


Sample Analysis
Cope Lake Property
Cardiff Township, Ontario

By
R. A. MacGregor, P. Eng.

February 5, 2015



2.55830

Table of Contents

	Page
Summary	1
Location, Access and Ownership	1
Work Program	1
Results and Conclusions	2
Sample Analysis Numbers	3
Appendix I	Receipts
Appendix II	Certificates of Analysis
Appendix III	Location Plans
Map Case	Sample Traverse Plan

Summary

Samples were collected during a prospecting and sample program carried out at the same time as a magnetometer survey. A total of 18 samples were collected and analysed by ICP-MS after 4 acid dissolution. Nine samples were also analysed by ICP-MS after a lithium borate fusion to test for rare earths.

Location, Access and Ownership

The claims are located in Lots 4 to 6 Concession 20 and the south ½ of Lot 7 Concession 21 Cardiff Township, Southern Ontario Mining Division. They are numbered SO 500175 and 500176 and are held in the name of Skead Holdings Ltd. Access is by a trail running south west from a township road running south from secondary Highway 648 to Cope Lake. The property is about 3 km east of the village of Wilberforce, Ontario.

Work Program

Samples received from the field were cleaned of dirt and moss with a wire brush and placed in plastic bags with a sample number tag. The number was also marked on the outside of the bag with permanent black marker. One approximately fist sized piece from each location was also set aside for further examination.

The samples were sent to Swastika Labs for sample preparation. Pulps and rejects were collected from Swastika Labs, an approximately 20 to 30 gram portion was placed in marked coin envelopes and sent to Acme Labs for analysis by ICP-MS after 4 acid dissolution. Samples showing indications of REE after analysis were also sent for analysis of REE by ICP-MS after lithium borate fusion.

The remaining pulps were placed in 40 dram plastic vials, marked with the sample number and stored in wooden boxes. Rejects have also been stored.

Results and Conclusions

Analysis showed a number of samples which were anomalous in uranium and thorium yttrium and niobium. Further analysis for rare earths gave some anomalous values with a significant heavy rare earth component. Follow up sampling should be done to get an idea of the extent of mineralization.

Soil sampling and possibly stripping of area around the better samples should be undertaken.

Respectfully submitted,



R. A. MacGregor, P. Eng.

February 05, 2015

Sample Analysis Numbers

Sample No.	ICP-MS	
	4 acid dissolution IMA No.	lithium borate fusion REE No.
3085	1357	102
3086	1358	
3087	1359	
3088	1360	101
3089	1361	100
3090	1362	
3091	1363	
3092	1364	99
3093	1365	
3094	1366	98
3095	1367	97
3096	1368	96
3097	1369	93
3098	1370	94
3099	1371	
3100	1372	
62901	1377	
62902	1378	

Appendix I

Receipts



Acme Analytical Laboratories (Vancouver) Ltd.
 9050 Shaughnessy St.
 Vancouver, BC Canada V6P 6E5
 Phone 604 253 3158 Fax 604 253 1716
 GST # 843013921 RT

Bill To: MacGregor, R.A.
 28 Ford St.
 Sault Ste. Marie, ON P6A 4N4
 CANADA

Invoice Date: September 25, 2013
 Invoice Number: **VANI177799**
 Submitted by: R.A. MacGregor
 Job Number: VAN13003618
 Order Number:
 Project Code: None Given
 Shipment ID:
 Quote Number:

Item	Package	Description	Sample No.	Unit Price	Amount
1	SPLP	Reception and labelling of pulps	90	\$0.30	\$27.00
2	G1EX	0.25g 4 Acid Digestion ICP-MS	90	\$18.75	\$1,687.50
3	DIS-PLP	Warehouse handling of pulps	90	\$0.10	\$9.00
Net Total					\$1,723.50
Ontario HST					\$224.06
Grand Total					CAD \$1,947.56

Invoice Stated In Canadian Dollars

Payment Terms:

Due upon receipt of invoice. Please pay the last amount shown on the invoice.

For **cheque payments**, please remit payable to: Acme Analytical Laboratories (Vancouver) Ltd., 9050 Shaughnessy St. Vancouver BC, V6P 6E5
 Please specify Acme invoice number on cheque remittance.

For **electronic payments**, please wire funds to one of the following accounts:

For payment in Canadian Funds:
 Acme Analytical Laboratories (Vancouver) Ltd.
 HSBC
 885 West Georgia St
 Vancouver, BC Canada V6C 3G1
 Account # 428755-001
 Bank Transit # 10270-016
 Swift Code: HKBCCATT

For payment in US Funds:
 Acme Analytical Laboratories (Vancouver) Ltd.
 HSBC
 885 West Georgia St
 Vancouver, BC Canada V6C 3G1
 Account # 428755-070
 Bank Transit # 10270-016
 Swift Code: HKBCCATT

Please specify Acme invoice number for reference on transfer forms when making payment.
 For any enquiries please contact us: AccountReivable.VAN@acmelab.com

Sept 30/13

Skid 1243



Acme Analytical Laboratories (Vancouver) Ltd.
9050 Shaughnessy St.
Vancouver, BC Canada V6P 6E5
Phone 604 253 3158 Fax 604 253 1716
GST # 843013921 RT

Bill To: MacGregor, R.A.
28 Ford St.
Sault Ste. Marie, ON P6A 4N4
CANADA

Invoice Date: October 31, 2013
Invoice Number: **VANI181168**
Submitted by: R.A. MacGregor
Job Number: VAN13004258
Order Number:
Project Code: Various 04/10/13
Shipment ID:
Quote Number:

Item	Package	Description	Sample No.	Unit Price	Amount
1	SPLP	Reception and labelling of pulps	23	\$0.30	\$6.90
2	4B03	Refractory and REEs only	23	\$29.40	\$676.20
3	DIS-PLP	Warehouse handling of pulps	23	\$0.10	\$2.30
			Net Total		\$685.40
			Ontario HST		\$89.10
			Grand Total	CAD	\$774.50

Invoice Stated In Canadian Dollars

Payment Terms:

Due upon receipt of invoice. Please pay the last amount shown on the invoice.

For **cheque payments**, please remit payable to: Acme Analytical Laboratories (Vancouver) Ltd., 9050 Shaughnessy St. Vancouver BC, V6P 6E5
Please specify Acme invoice number on cheque remittance.

For **electronic payments**, please wire funds to one of the following accounts:

For payment in Canadian Funds:

Acme Analytical Laboratories (Vancouver) Ltd.
HSBC
885 West Georgia St
Vancouver, BC Canada V6C 3G1
Account # 428755-001
Bank Transit # 10270-016
Swift Code: HKBCCATT

For payment in US Funds:

Acme Analytical Laboratories (Vancouver) Ltd.
HSBC
885 West Georgia St
Vancouver, BC Canada V6C 3G1
Account # 428755-070
Bank Transit # 10270-016
Swift Code: HKBCCATT

Please specify Acme invoice number for reference on transfer forms when making payment.
For any enquiries please contact us: AccountReceivable.VAN@acmelab.com

Nov. 13/13

Lead 1246

Appendix II

Certificate of Analysis



www.acmelab.com

Acme Analytical Laboratories (Vancouver) Ltd.
9050 Shaughnessy St Vancouver BC V6P 6E5 CANADA
PHONE (604) 253-3158

Client: **MacGregor, R.A.**
28 Ford St.
Sault Ste. Marie ON P6A 4N4 CANADA

Submitted By: R.A. MacGregor
Receiving Lab: Canada-Vancouver
Received: September 09, 2013
Report Date: September 25, 2013
Page: 1 of 4

CERTIFICATE OF ANALYSIS

VAN13003618.1

CLIENT JOB INFORMATION

Project: None Given
Shipment ID:
P.O. Number
Number of Samples: 90

SAMPLE PREPARATION AND ANALYTICAL PROCEDURES

Procedure Code	Number of Samples	Code Description	Test Wgt (g)	Report Status	Lab
SPLP	90	Sorting, labeling and boxing samples received as pulps			VAN
1EX	90	4 Acid digestion ICP-MS analysis	0.25	Completed	VAN

SAMPLE DISPOSAL

RTRN-PLP Return

ADDITIONAL COMMENTS

Acme does not accept responsibility for samples left at the laboratory after 90 days without prior written instructions for sample storage or return.

Invoice To: **MacGregor, R.A.**
28 Ford St.
Sault Ste. Marie ON P6A 4N4
CANADA

CC:



This report supersedes all previous preliminary and final reports with this file number dated prior to the date on this certificate. Signature indicates final approval; preliminary reports are unsigned and should be used for reference only.
All results are considered the confidential property of the client. Acme assumes the liabilities for actual cost of analysis only. Results apply to samples as submitted.
*** asterisk indicates that an analytical result could not be provided due to unusually high levels of interference from other elements.



www.acmelab.com

Acme Analytical Laboratories (Vancouver) Ltd.
 9050 Shaughnessy St Vancouver BC V6P 6E5 CANADA
 PHONE (604) 253-3158

Client: **MacGregor, R.A.**
 28 Ford St.
 Sault Ste. Marie ON P6A 4N4 CANADA

Project: None Given
 Report Date: September 25, 2013

Page: 4 of 4

Part: 1 of 3

CERTIFICATE OF ANALYSIS

VAN13003618.1

Method	Analyte	Unit	MDL	1EX	1EX	1EX	1EX	1EX	1EX	1EX	1EX	1EX	1EX	1EX	1EX	1EX	1EX	1EX	1EX	1EX	1EX		
				Mo	Cu	Pb	Zn	Ag	Ni	Co	Mn	Fe	As	U	Au	Th	Sr	Cd	Sb	Bi	V	Ca	P
				ppm	ppm	ppm	ppm	ppm	ppm	%	ppm	ppm	ppm	ppm	ppm	ppm	ppm	ppm	ppm	%	%		
				0.1	0.1	0.1	1	0.1	0.1	0.2	1	0.01	1	0.1	0.1	0.1	0.1	0.1	0.1	1	0.01	0.001	
IMA1351	Rock Pulp			1.3	5.8	21.2	3	<0.1	9.7	8.8	21	0.48	2	21.8	<0.1	43.2	46	<0.1	<0.1	0.3	14	0.02	0.008
IMA1352	Rock Pulp			1.3	6.1	16.5	1	<0.1	8.3	5.8	24	0.42	2	22.0	<0.1	47.1	45	<0.1	<0.1	0.3	16	0.02	0.008
IMA1353	Rock Pulp			0.2	106.9	2.5	50	0.1	885.6	104.5	>10000	24.31	3	<0.1	<0.1	0.2	54	0.1	0.2	0.2	121	6.61	0.010
IMA1354	Rock Pulp			1.9	149.8	9.9	297	0.3	88.9	46.4	1123	9.18	4	0.5	<0.1	1.2	78	0.8	0.4	<0.1	418	1.73	0.061
IMA1355	Rock Pulp			4.3	192.0	412.7	1970	2.5	134.3	63.9	383	9.52	138	1.7	<0.1	6.5	125	5.6	7.7	1.1	182	1.30	0.075
IMA1356	Rock Pulp			5.0	43.9	12.1	73	0.1	14.8	9.5	601	5.31	34	2.5	<0.1	8.8	273	0.1	0.1	0.2	111	1.22	0.107
IMA1357	Rock Pulp			4.9	10.0	15.7	193	<0.1	2.9	4.8	2817	10.04	1	3.3	<0.1	6.0	113	0.5	<0.1	<0.1	9	3.13	0.131
IMA1358	Rock Pulp			15.2	20.9	31.5	169	<0.1	15.0	4.9	684	4.92	1	13.5	0.4	33.4	124	<0.1	0.1	<0.1	16	0.87	0.026
IMA1359	Rock Pulp			1.5	15.2	36.0	214	<0.1	9.7	28.5	1813	8.90	5	5.4	<0.1	7.9	685	0.2	<0.1	0.2	38	5.11	0.220
IMA1360	Rock Pulp			1.5	6.8	29.8	77	<0.1	14.1	5.2	571	2.65	<1	13.8	<0.1	83.4	359	<0.1	<0.1	<0.1	28	1.14	0.089
IMA1361	Rock Pulp			0.6	14.4	26.3	654	<0.1	3.8	4.2	2692	8.86	4	15.2	<0.1	44.0	222	1.5	<0.1	0.1	12	1.14	0.031
IMA1362	Rock Pulp			5.0	16.0	32.1	170	<0.1	54.9	14.5	947	4.46	3	20.2	<0.1	27.4	364	0.1	<0.1	<0.1	81	1.81	0.218
IMA1363	Rock Pulp			2.6	4.3	23.3	59	<0.1	22.2	9.5	987	2.66	2	10.2	<0.1	37.8	197	<0.1	0.2	0.6	52	4.51	0.038
IMA1364	Rock Pulp			6.4	33.9	45.6	169	0.2	9.1	4.3	621	4.84	3	37.5	<0.1	253.0	182	0.3	0.2	0.5	34	1.00	0.031
IMA1365	Rock Pulp			2.3	5.3	43.8	46	<0.1	4.6	0.9	134	0.90	2	27.8	<0.1	71.5	185	<0.1	<0.1	<0.1	2	0.41	0.003
IMA1366	Rock Pulp			0.6	2.8	17.3	63	<0.1	2.5	1.1	774	1.54	2	22.2	<0.1	104.4	281	<0.1	<0.1	0.2	2	2.06	0.012
IMA1367	Rock Pulp			1.3	3.1	23.8	288	*	2.9	7.0	5491	14.04	4	452.7	*	15.5	244	0.6	0.1	1.1	4	7.31	0.007
IMA1368	Rock Pulp			0.5	7.5	27.6	88	<0.1	5.4	3.0	488	3.14	5	23.1	<0.1	142.3	336	<0.1	0.2	<0.1	14	0.50	0.132
IMA1369	Rock Pulp			2.7	86.8	240.1	223	0.4	17.9	22.0	5412	13.62	4	257.2	<0.1	1792	147	0.6	0.4	0.3	90	9.67	0.344
IMA1370	Rock Pulp			2.0	13.6	20.8	20	0.2	5.6	1.2	118	0.94	2	104.6	<0.1	73.4	248	<0.1	<0.1	<0.1	<1	0.14	0.006
IMA1371	Rock Pulp			1.9	8.8	21.7	8	<0.1	5.3	2.1	165	0.72	2	22.5	<0.1	92.4	322	<0.1	<0.1	<0.1	5	0.22	0.008
IMA1372	Rock Pulp			2.9	13.9	27.7	12	<0.1	6.4	1.0	67	0.87	3	16.0	<0.1	55.3	336	<0.1	0.1	<0.1	4	0.44	0.006
IMA1373	Rock Pulp			2.1	9.9	11.3	6	<0.1	12.9	1.4	90	0.69	2	4.3	<0.1	21.6	190	<0.1	0.1	<0.1	3	0.16	0.002
IMA1374	Rock Pulp			7.5	6.0	21.2	14	<0.1	8.4	1.5	101	0.73	3	15.0	<0.1	52.4	258	<0.1	0.1	<0.1	5	0.30	0.007
IMA1375	Rock Pulp			0.3	1.5	8.6	814	<0.1	12.8	13.5	>10000	17.70	<1	0.8	<0.1	1.8	105	0.9	<0.1	<0.1	32	12.23	0.002
IMA1376	Rock Pulp			1.8	3.6	22.8	269	7.1	7.6	3.4	2851	5.27	1	185.7	<0.1	75.3	149	11.8	<0.1	<0.1	35	3.24	0.010
IMA1377	Rock Pulp			3.1	57.9	21.4	602	*	3.5	1.3	2193	9.25	2	34.3	<0.1	87.5	182	1.8	<0.1	0.7	3	1.75	0.036
IMA1378	Rock Pulp			1.0	7.7	44.2	8	<0.1	6.6	1.1	63	0.42	<1	1.6	<0.1	1.6	521	0.2	0.2	<0.1	<1	0.31	0.002
IMA1379	Rock Pulp			1.5	27.0	22.3	72	<0.1	2.6	8.1	543	3.68	3	7.2	<0.1	21.1	1756	0.3	0.2	0.1	43	2.44	0.185
IMA1380	Rock Pulp			0.9	6.3	14.4	111	<0.1	17.8	14.2	1327	4.36	2	0.8	<0.1	1.7	380	0.2	0.4	0.2	104	5.51	0.003

This report supersedes all previous preliminary and final reports with this file number dated prior to the date on this certificate. Signature indicates final approval; preliminary reports are unsigned and should be used for reference only.



www.acmelab.com

Client: **MacGregor, R.A.**
28 Ford St.
Sault Ste. Marie ON P6A 4N4 CANADA

Acme Analytical Laboratories (Vancouver) Ltd.
9050 Shaughnessy St Vancouver BC V6P 6E5 CANADA
PHONE (604) 253-3158

Project: None Given
Report Date: September 25, 2013

Page: 4 of 4

Part: 2 of 3

CERTIFICATE OF ANALYSIS VAN13003618.1

Method	Analyte	1EX	1EX	1EX	1EX	1EX	1EX	1EX	1EX	1EX	1EX	1EX	1EX	1EX	1EX	1EX	1EX	1EX	1EX	1EX	
		La	Cr	Mg	Ba	Ti	Al	Na	K	W	Zr	Ce	Sn	Y	Nb	Ta	Be	Sc	Li	S	Rb
Unit		ppm	ppm	%	ppm	%	%	%	ppm	ppm	ppm	ppm	ppm	ppm	ppm	ppm	ppm	ppm	%	ppm	
MDL		0.1	1	0.01	1	0.001	0.01	0.001	0.01	0.1	0.1	1	0.1	0.1	0.1	1	1	0.1	0.1	0.1	
IMA1351	Rock Pulp	72.7	118	0.09	728	0.074	4.23	0.088	3.65	0.3	59.3	123	1.0	7.3	4.9	0.8	<1	2	3.1	0.2	155.3
IMA1352	Rock Pulp	58.2	108	0.09	774	0.082	4.48	0.085	4.67	0.3	70.9	100	0.9	8.6	5.1	0.7	<1	2	3.1	0.1	188.1
IMA1353	Rock Pulp	1.8	1601	2.40	119	0.183	2.84	0.073	0.44	0.2	4.6	3	0.2	11.2	0.5	<0.1	<1	18	10.2	0.3	34.3
IMA1354	Rock Pulp	4.1	112	3.00	73	1.022	7.63	3.890	0.31	0.6	84.3	13	3.4	30.8	4.6	0.3	<1	42	25.9	3.1	13.7
IMA1355	Rock Pulp	23.8	207	1.55	11	0.450	6.50	3.988	0.71	0.9	93.1	55	5.9	22.6	6.1	0.3	<1	22	17.4	9.5	30.8
IMA1356	Rock Pulp	39.1	514	1.86	653	0.602	6.79	1.978	2.73	2.7	207.2	78	3.9	14.5	12.6	0.9	3	13	36.2	0.2	130.7
IMA1357	Rock Pulp	50.5	148	0.31	517	0.828	6.76	3.445	2.87	0.5	386.4	114	8.6	152.4	31.8	1.8	7	6	9.5	<0.1	72.1
IMA1358	Rock Pulp	16.4	598	0.52	284	0.369	6.84	3.183	2.67	1.1	611.6	37	3.0	36.6	41.5	1.9	5	2	55.3	0.2	172.4
IMA1359	Rock Pulp	28.2	113	1.08	494	0.570	9.61	4.384	1.14	1.3	110.5	58	5.5	49.4	18.1	0.9	5	3	37.6	<0.1	58.6
IMA1360	Rock Pulp	80.5	312	0.56	1226	0.241	6.93	2.516	3.76	0.2	357.2	159	2.5	102.0	42.7	2.2	5	4	44.0	<0.1	205.8
IMA1361	Rock Pulp	74.0	120	0.27	204	0.283	8.25	4.732	2.95	0.4	185.1	188	23.6	278.2	104.9	6.6	11	<1	7.8	<0.1	133.8
IMA1362	Rock Pulp	23.9	506	1.93	742	0.508	7.22	2.985	2.75	0.7	302.5	63	2.1	67.0	56.4	2.1	11	7	77.9	<0.1	262.2
IMA1363	Rock Pulp	26.2	189	2.39	457	0.268	4.63	1.440	2.86	1.4	114.7	62	1.7	63.7	31.1	3.6	4	10	19.3	<0.1	104.2
IMA1364	Rock Pulp	218.7	237	0.51	520	0.408	6.87	2.883	3.38	1.1	947.1	338	3.9	85.1	39.7	2.3	6	3	59.7	<0.1	180.5
IMA1365	Rock Pulp	5.0	148	0.05	202	0.044	5.65	2.433	4.25	0.7	186.4	18	0.7	14.2	22.0	0.4	5	<1	11.2	<0.1	147.4
IMA1366	Rock Pulp	158.1	70	0.17	583	0.016	8.54	5.940	3.40	0.7	108.0	332	2.6	344.1	5.5	0.4	5	<1	9.5	<0.1	121.2
IMA1367	Rock Pulp	115.1	52	0.30	113	0.142	3.82	4.484	0.30	4.1	953.3	236	189.5	305.8	995.7	133.9	39	<1	62.4	<0.1	12.5
IMA1368	Rock Pulp	102.1	111	0.47	916	0.201	7.60	2.977	5.59	0.4	174.5	233	2.8	404.6	47.6	1.3	14	1	43.2	<0.1	192.7
IMA1369	Rock Pulp	485.1	161	2.24	197	0.790	2.40	0.909	0.74	1.2	775.7	1283	6.6	919.0	142.2	8.9	15	16	27.4	<0.1	26.4
IMA1370	Rock Pulp	24.1	159	0.05	373	0.056	5.18	2.879	3.20	1.4	1091	62	2.2	144.2	124.1	5.6	6	<1	3.1	<0.1	92.5
IMA1371	Rock Pulp	12.9	159	0.10	963	0.090	5.69	1.730	5.10	0.2	147.1	59	0.9	54.9	38.1	2.1	3	<1	4.8	<0.1	249.9
IMA1372	Rock Pulp	2.7	221	0.04	627	0.073	6.34	3.055	4.62	0.5	164.0	6	0.9	11.1	25.9	1.8	6	<1	3.6	<0.1	178.8
IMA1373	Rock Pulp	10.4	348	0.09	559	0.009	2.73	0.896	1.93	0.4	38.7	17	0.6	4.4	2.7	0.2	1	<1	5.0	<0.1	69.2
IMA1374	Rock Pulp	6.5	214	0.13	483	0.038	6.36	2.210	4.94	0.7	120.9	24	0.7	12.7	28.0	1.4	7	<1	13.9	<0.1	164.5
IMA1375	Rock Pulp	48.8	83	1.41	14	0.091	0.36	1.575	0.03	0.3	433.8	122	23.6	237.7	1.5	0.1	22	5	67.6	<0.1	2.3
IMA1376	Rock Pulp	222.7	158	0.50	269	0.022	3.90	3.126	1.43	0.5	>2000	408	14.5	521.4	33.5	7.0	14	<1	38.0	<0.1	60.2
IMA1377	Rock Pulp	58.0	241	0.66	219	0.265	3.94	2.823	1.55	2.1	>2000	163	21.1	263.4	202.0	13.0	24	<1	48.9	0.2	86.8
IMA1378	Rock Pulp	1.6	118	0.05	2764	0.006	7.81	2.334	7.72	0.2	62.2	3	0.6	3.0	1.8	0.2	3	<1	6.6	<0.1	281.0
IMA1379	Rock Pulp	73.3	82	1.01	1758	0.352	9.01	4.579	3.57	0.4	181.2	192	2.5	38.2	12.7	0.5	4	4	11.3	0.4	70.8
IMA1380	Rock Pulp	11.8	180	3.63	854	0.132	5.29	1.081	2.57	2.1	77.1	21	2.7	14.1	2.3	0.2	6	5	31.3	<0.1	147.5

This report supersedes all previous preliminary and final reports with this file number dated prior to the date on this certificate. Signature indicates final approval; preliminary reports are unsigned and should be used for reference only.



www.acmelab.com

Acme Analytical Laboratories (Vancouver) Ltd.
 9050 Shaughnessy St Vancouver BC V6P 6E5 CANADA
 PHONE (604) 253-3158

Client: **MacGregor, R.A.**
 28 Ford St.
 Sault Ste. Marie ON P6A 4N4 CANADA

Project: None Given
 Report Date: September 25, 2013

Page: 4 of 4

Part: 3 of 3

CERTIFICATE OF ANALYSIS VAN13003618.1

Method	Analyte	1EX	1EX	1EX	1EX	1EX	1EX
		Hf	In	Re	Se	Te	Tl
Unit		ppm	ppm	ppm	ppm	ppm	ppm
MDL		0.1	0.05	0.005	1	0.5	0.5
IMA1351	Rock Pulp	1.7	<0.05	<0.005	<1	<0.5	0.9
IMA1352	Rock Pulp	2.0	<0.05	<0.005	<1	<0.5	0.9
IMA1353	Rock Pulp	0.2	<0.05	<0.005	<1	0.5	<0.5
IMA1354	Rock Pulp	2.6	0.12	0.008	1	<0.5	0.6
IMA1355	Rock Pulp	2.7	0.33	0.014	7	0.9	1.8
IMA1356	Rock Pulp	5.7	0.06	<0.005	<1	<0.5	0.9
IMA1357	Rock Pulp	9.5	0.20	<0.005	<1	<0.5	0.5
IMA1358	Rock Pulp	16.3	0.06	<0.005	<1	<0.5	1.6
IMA1359	Rock Pulp	1.9	<0.05	<0.005	<1	<0.5	0.5
IMA1360	Rock Pulp	11.4	<0.05	<0.005	<1	<0.5	1.6
IMA1361	Rock Pulp	3.2	0.06	<0.005	<1	<0.5	0.7
IMA1362	Rock Pulp	9.1	0.07	<0.005	<1	<0.5	1.8
IMA1363	Rock Pulp	3.8	0.09	<0.005	<1	0.9	0.8
IMA1364	Rock Pulp	26.8	0.08	<0.005	<1	<0.5	1.5
IMA1365	Rock Pulp	6.9	<0.05	<0.005	<1	<0.5	1.0
IMA1366	Rock Pulp	2.8	<0.05	<0.005	2	<0.5	<0.5
IMA1367	Rock Pulp	29.9	<0.05	<0.005	<1	<0.5	<0.5
IMA1368	Rock Pulp	4.2	<0.05	<0.005	2	<0.5	1.5
IMA1369	Rock Pulp	17.5	0.25	<0.005	4	1.0	<0.5
IMA1370	Rock Pulp	35.9	<0.05	<0.005	<1	<0.5	0.5
IMA1371	Rock Pulp	4.2	<0.05	<0.005	<1	<0.5	1.9
IMA1372	Rock Pulp	5.4	<0.05	<0.005	<1	<0.5	1.2
IMA1373	Rock Pulp	1.1	<0.05	<0.005	<1	<0.5	<0.5
IMA1374	Rock Pulp	5.2	<0.05	<0.005	<1	<0.5	0.9
IMA1375	Rock Pulp	15.9	0.18	<0.005	1	<0.5	<0.5
IMA1376	Rock Pulp	735.0	<0.05	<0.005	2	<0.5	<0.5
IMA1377	Rock Pulp	91.3	<0.05	<0.005	4	<0.5	0.6
IMA1378	Rock Pulp	1.3	0.06	<0.005	<1	<0.5	2.0
IMA1379	Rock Pulp	4.6	0.08	0.005	<1	<0.5	<0.5
IMA1380	Rock Pulp	2.8	<0.05	<0.005	<1	1.7	1.0

This report supersedes all previous preliminary and final reports with this file number dated prior to the date on this certificate. Signature indicates final approval; preliminary reports are unsigned and should be used for reference only.



www.acmelab.com

Acme Analytical Laboratories (Vancouver) Ltd.
 9050 Shaughnessy St Vancouver BC V6P 6E5 CANADA
 PHONE (604) 253-3158

Client: **MacGregor, R.A.**
 28 Ford St.
 Sault Ste. Marie ON P6A 4N4 CANADA

Project: None Given
 Report Date: September 25, 2013

Page: 1 of 1

Part: 1 of 3

QUALITY CONTROL REPORT VAN13003618.1

Method	Analyte	1EX	1EX	1EX	1EX	1EX	1EX	1EX	1EX	1EX	1EX	1EX	1EX	1EX	1EX	1EX	1EX	1EX	1EX	1EX	1EX
Unit		Mo	Cu	Pb	Zn	Ag	Ni	Co	Mn	Fe	As	U	Au	Th	Sr	Cd	Sb	Bi	V	Ca	P
MDL		ppm	ppm	ppm	ppm	ppm	ppm	ppm	ppm	%	ppm	ppm	ppm	ppm	ppm	ppm	ppm	ppm	ppm	%	%
		0.1	0.1	0.1	1	0.1	0.1	0.2	1	0.01	1	0.1	0.1	0.1	1	0.1	0.1	0.1	1	0.01	0.001
Pulp Duplicates																					
IMA1323	Rock Pulp	0.4	266.0	0.6	10	<0.1	119.1	13.4	1809	0.35	2	<0.1	<0.1	<0.1	417	0.1	<0.1	<0.1	5	34.84	<0.001
REP IMA1323	QC	0.5	225.0	0.4	11	<0.1	113.0	13.0	1747	0.33	<1	<0.1	<0.1	<0.1	381	<0.1	<0.1	<0.1	5	34.01	<0.001
IMA1359	Rock Pulp	1.5	15.2	36.0	214	<0.1	9.7	28.5	1813	8.90	5	5.4	<0.1	7.9	685	0.2	<0.1	0.2	38	5.11	0.220
REP IMA1359	QC	1.3	14.0	33.9	205	<0.1	9.8	27.4	1745	8.62	3	5.6	<0.1	8.0	656	0.2	<0.1	0.2	38	4.93	0.205
IMA1364	Rock Pulp	6.4	33.9	45.6	169	0.2	9.1	4.3	621	4.84	3	37.5	<0.1	253.0	182	0.3	0.2	0.5	34	1.00	0.031
REP IMA1364	QC	7.7	33.5	42.3	167	0.2	8.5	4.1	587	4.78	2	36.2	<0.1	241.8	175	<0.1	0.1	0.3	33	0.97	0.032
IMA1380	Rock Pulp	0.9	6.3	14.4	111	<0.1	17.8	14.2	1327	4.36	2	0.8	<0.1	1.7	380	0.2	0.4	0.2	104	5.51	0.003
REP IMA1380	QC	0.8	6.3	14.7	114	<0.1	17.4	14.7	1315	4.33	2	0.8	<0.1	1.8	383	0.1	0.4	0.2	100	5.49	0.003
Reference Materials																					
STD OREAS24P	Standard	1.3	53.6	2.9	118	<0.1	155.3	46.2	1112	7.59	2	0.6	<0.1	2.9	373	0.2	<0.1	<0.1	167	6.05	0.132
STD OREAS24P	Standard	1.3	48.5	2.9	100	<0.1	145.9	48.0	1041	6.95	2	0.7	<0.1	2.7	353	<0.1	<0.1	<0.1	157	5.48	0.126
STD OREAS24P	Standard	1.4	49.2	2.7	109	<0.1	142.3	46.4	1124	7.51	2	0.7	<0.1	2.8	383	0.2	<0.1	<0.1	169	6.02	0.137
STD OREAS45E	Standard	2.5	793.8	19.4	48	0.4	489.2	65.2	564	25.96	17	2.4	<0.1	13.2	15	0.1	0.9	0.3	339	0.13	0.035
STD OREAS45E	Standard	2.2	785.9	18.3	41	0.3	484.6	64.0	562	25.16	16	2.4	<0.1	13.8	16	<0.1	1.0	0.3	328	0.08	0.033
STD OREAS45E	Standard	2.1	808.0	17.8	42	0.3	490.0	62.4	566	24.37	17	2.6	<0.1	13.4	12	<0.1	1.0	0.3	353	0.09	0.035
STD OREAS24P Expected		1.5	52	2.9	119	0.06	141	44	1100	7.53	1.2	0.75		2.85	403	0.15	0.09		158	5.83	0.136
STD OREAS45E Expected		2.4	780	18.2	46.7	0.311	454	57	550	24.12	16.3	2.41	0.05	12.9	15.9	0.06	1	0.28	322	0.065	0.034
BLK	Blank	<0.1	0.1	0.2	<1	<0.1	<0.1	<0.2	<1	<0.01	<1	<0.1	<0.1	<0.1	<1	<0.1	<0.1	<0.1	<1	<0.01	<0.001
BLK	Blank	<0.1	0.2	0.2	<1	<0.1	0.4	<0.2	4	<0.01	2	<0.1	<0.1	<0.1	<1	<0.1	<0.1	<0.1	<1	0.01	<0.001
BLK	Blank	<0.1	0.2	<0.1	<1	<0.1	0.3	<0.2	5	<0.01	<1	<0.1	<0.1	<0.1	<1	<0.1	<0.1	<0.1	<1	0.02	<0.001

This report supersedes all previous preliminary and final reports with this file number dated prior to the date on this certificate. Signature indicates final approval; preliminary reports are unsigned and should be used for reference only.



www.acmelab.com

Acme Analytical Laboratories (Vancouver) Ltd.
 9050 Shaughnessy St Vancouver BC V6P 6E5 CANADA
 PHONE (604) 253-3158

Client: **MacGregor, R.A.**
 28 Ford St.
 Sault Ste. Marie ON P6A 4N4 CANADA

Project: None Given
 Report Date: September 25, 2013

Page: 1 of 1

Part: 2 of 3

QUALITY CONTROL REPORT

VAN13003618.1

Method	Analyte	1EX	1EX	1EX	1EX	1EX	1EX	1EX	1EX	1EX	1EX	1EX	1EX	1EX	1EX	1EX	1EX	1EX	1EX	1EX	
Unit		La	Cr	Mg	Ba	Ti	Al	Na	K	W	Zr	Ce	Sn	Y	Nb	Ta	Be	Sc	Li	S	Rb
MDL		ppm	ppm	%	ppm	%	%	%	%	ppm	ppm	ppm	ppm	ppm	ppm	ppm	ppm	ppm	ppm	%	ppm
Pulp Duplicates																					
IMA1323	Rock Pulp	0.4	15	3.45	13	0.007	0.09	0.008	<0.01	<0.1	0.6	<1	<0.1	0.4	<0.1	<0.1	<1	<1	0.4	<0.1	0.5
REP IMA1323	QC	0.9	13	3.41	13	0.006	0.09	0.007	<0.01	0.1	0.4	2	<0.1	0.4	<0.1	<0.1	<1	<1	0.5	<0.1	0.3
IMA1359	Rock Pulp	28.2	113	1.08	494	0.570	9.61	4.384	1.14	1.3	110.5	58	5.5	49.4	18.1	0.9	5	3	37.6	<0.1	58.6
REP IMA1359	QC	28.5	110	1.06	483	0.562	9.45	4.249	1.10	1.3	100.5	57	5.1	48.3	17.5	0.9	6	3	36.1	<0.1	55.8
IMA1364	Rock Pulp	218.7	237	0.51	520	0.408	6.87	2.883	3.38	1.1	947.1	338	3.9	85.1	39.7	2.3	6	3	59.7	<0.1	180.5
REP IMA1364	QC	206.4	235	0.51	490	0.404	6.87	2.815	3.34	1.3	936.3	314	3.8	84.3	38.6	2.2	5	3	58.4	<0.1	183.4
IMA1380	Rock Pulp	11.8	180	3.63	854	0.132	5.29	1.081	2.57	2.1	77.1	21	2.7	14.1	2.3	0.2	6	5	31.3	<0.1	147.5
REP IMA1380	QC	11.2	188	3.73	859	0.121	5.32	1.085	2.59	2.7	74.7	21	2.7	13.8	2.2	0.2	6	5	30.1	<0.1	146.2
Reference Materials																					
STD OREAS24P	Standard	19.0	224	4.07	276	1.186	7.97	2.484	0.66	0.6	140.9	38	1.5	21.8	18.8	1.3	1	21	7.6	<0.1	22.2
STD OREAS24P	Standard	18.1	207	3.89	255	0.989	7.35	2.368	0.61	0.5	127.1	36	1.6	22.6	17.5	1.1	1	19	7.4	<0.1	20.1
STD OREAS24P	Standard	17.6	194	4.15	279	1.089	7.64	2.383	0.67	0.5	135.6	38	1.5	21.5	18.4	1.1	<1	21	7.7	<0.1	21.9
STD OREAS45E	Standard	11.0	1095	0.16	256	0.585	7.12	0.053	0.35	0.9	98.5	24	1.3	7.9	6.3	0.6	<1	99	6.3	<0.1	21.6
STD OREAS45E	Standard	11.7	990	0.16	235	0.551	7.07	0.049	0.32	1.0	92.5	25	1.3	8.6	5.9	0.5	<1	97	6.6	<0.1	20.5
STD OREAS45E	Standard	11.0	1064	0.15	250	0.594	7.13	0.063	0.32	1.0	107.5	24	1.3	7.7	6.3	0.6	<1	98	6.9	<0.1	21.7
STD OREAS24P Expected		17.4	196	4.13	285	1.1	7.66	2.34	0.7	0.5	141	37.6	1.6	21.3	21	1.04		20	8.7		22.4
STD OREAS45E Expected		11	979	0.156	252	0.559	6.78	0.059	0.324	1.07	110	23.5	1.32	8.28	6.8	0.56		93	6.58	0.046	21.2
BLK	Blank	<0.1	1	<0.01	<1	<0.001	<0.01	<0.001	<0.01	<0.1	<0.1	<1	<0.1	<0.1	<0.1	<0.1	<1	<1	0.1	<0.1	0.3
BLK	Blank	<0.1	<1	<0.01	<1	<0.001	<0.01	<0.001	0.01	<0.1	<0.1	<1	<0.1	<0.1	<0.1	<0.1	<1	<1	<0.1	<0.1	0.7
BLK	Blank	<0.1	<1	<0.01	<1	<0.001	0.01	0.005	<0.01	<0.1	0.3	<1	<0.1	<0.1	<0.1	<0.1	<1	<1	<0.1	<0.1	<0.1

This report supersedes all previous preliminary and final reports with this file number dated prior to the date on this certificate. Signature indicates final approval; preliminary reports are unsigned and should be used for reference only.



www.acmelab.com

Acme Analytical Laboratories (Vancouver) Ltd.
 9050 Shaughnessy St Vancouver BC V6P 6E5 CANADA
 PHONE (604) 253-3158

Client: **MacGregor, R.A.**
 28 Ford St.
 Sault Ste. Marie ON P6A 4N4 CANADA

Project: None Given
 Report Date: September 25, 2013

Page: 1 of 1

Part: 3 of 3

QUALITY CONTROL REPORT

VAN13003618.1

Method		1EX	1EX	1EX	1EX	1EX	1EX
Analyte		Hf	In	Re	Se	Te	Tl
Unit		ppm	ppm	ppm	ppm	ppm	ppm
MDL		0.1	0.05	0.005	1	0.5	0.5
Pulp Duplicates							
IMA1323	Rock Pulp	<0.1	<0.05	<0.005	<1	3.0	<0.5
REP IMA1323	QC	<0.1	<0.05	<0.005	<1	3.5	<0.5
IMA1359	Rock Pulp	1.9	<0.05	<0.005	<1	<0.5	0.5
REP IMA1359	QC	2.0	<0.05	<0.005	<1	<0.5	0.5
IMA1364	Rock Pulp	26.8	0.08	<0.005	<1	<0.5	1.5
REP IMA1364	QC	24.7	0.06	<0.005	<1	<0.5	1.4
IMA1380	Rock Pulp	2.8	<0.05	<0.005	<1	1.7	1.0
REP IMA1380	QC	2.8	<0.05	<0.005	<1	1.1	1.1
Reference Materials							
STD OREAS24P	Standard	3.5	0.05	<0.005	<1	<0.5	<0.5
STD OREAS24P	Standard	3.0	0.05	<0.005	<1	<0.5	<0.5
STD OREAS24P	Standard	3.6	<0.05	<0.005	<1	<0.5	<0.5
STD OREAS45E	Standard	3.2	0.07	<0.005	3	<0.5	<0.5
STD OREAS45E	Standard	2.6	0.08	<0.005	3	<0.5	<0.5
STD OREAS45E	Standard	3.2	0.11	<0.005	3	<0.5	<0.5
STD OREAS24P Expected		3.6					
STD OREAS45E Expected		3.11	0.099		2.97	0.1	0.15
BLK	Blank	<0.1	<0.05	<0.005	<1	<0.5	<0.5
BLK	Blank	<0.1	<0.05	<0.005	<1	<0.5	<0.5
BLK	Blank	<0.1	<0.05	<0.005	<1	<0.5	<0.5



www.acmelab.com

Acme Analytical Laboratories (Vancouver) Ltd.
9050 Shaughnessy St Vancouver BC V6P 6E5 CANADA
PHONE (604) 253-3158

Client: **MacGregor, R.A.**
28 Ford St.
Sault Ste. Marie ON P6A 4N4 CANADA

Submitted By: R.A. MacGregor
Receiving Lab: Canada-Vancouver
Received: October 15, 2013
Report Date: October 31, 2013
Page: 1 of 2

CERTIFICATE OF ANALYSIS VAN13004258.1

CLIENT JOB INFORMATION

Project: Various 04/10/13
Shipment ID:
P.O. Number
Number of Samples: 23

SAMPLE PREPARATION AND ANALYTICAL PROCEDURES

Procedure Code	Number of Samples	Code Description	Test Wgt (g)	Report Status	Lab
SPLP	23	Sorting, labeling and boxing samples received as pulps			VAN
4B03	23	LiBO2/Li2B4O7 fusion ICP-MS analysis	0.2	Completed	VAN

SAMPLE DISPOSAL

RTRN-PLP Return

ADDITIONAL COMMENTS

Acme does not accept responsibility for samples left at the laboratory after 90 days without prior written instructions for sample storage or return.

Invoice To: **MacGregor, R.A.**
28 Ford St.
Sault Ste. Marie ON P6A 4N4
CANADA

CC:



This report supersedes all previous preliminary and final reports with this file number dated prior to the date on this certificate. Signature indicates final approval; preliminary reports are unsigned and should be used for reference only. All results are considered the confidential property of the client. Acme assumes the liabilities for actual cost of analysis only. Results apply to samples as submitted.

*** asterisk indicates that an analytical result could not be provided due to unusually high levels of interference from other elements.



www.acmelab.com

Acme Analytical Laboratories (Vancouver) Ltd.
 9050 Shaughnessy St Vancouver BC V6P 6E5 CANADA
 PHONE (604) 253-3158

Client: **MacGregor, R.A.**
 28 Ford St.
 Sault Ste. Marie ON P6A 4N4 CANADA

Project: Various 04/10/13
 Report Date: October 31, 2013

Page: 2 of 2

Part: 1 of 2

CERTIFICATE OF ANALYSIS

VAN13004258.1

Method	Analyte	4B	4B	4B	4B	4B	4B	4B	4B	4B	4B	4B	4B	4B	4B	4B	4B	4B	4B	4B	4B
		Ba	Be	Co	Cs	Ga	Hf	Nb	Rb	Sn	Sr	Ta	Th	U	V	W	Zr	Y	La	Ce	Pr
Unit		ppm	ppm	ppm	ppm	ppm	ppm	ppm	ppm	ppm	ppm	ppm	ppm	ppm	ppm	ppm	ppm	ppm	ppm	ppm	ppm
MDL		1	1	0.2	0.1	0.5	0.1	0.1	0.1	1	0.5	0.1	0.2	0.1	8	0.5	0.1	0.1	0.1	0.1	0.2
REE 78	Rock Pulp	85	8	29.1	1.0	22.6	16.3	336.0	88.9	16	48.6	24.1	60.5	16.5	29	16.1	623.5	63.1	116.9	214.1	22.52
REE 82	Rock Pulp	686	<1	23.9	1.5	9.6	3.4	25.5	136.7	1	38.4	5.4	254.6	174.9	13	1.9	127.6	45.3	331.6	574.5	59.80
REE 83	Rock Pulp	20	1	107.6	0.6	25.3	6.4	17.3	7.0	<1	10.6	1.2	5.1	1.0	290	1.1	230.7	48.8	32.1	65.9	8.50
REE 84	Rock Pulp	522	<1	62.6	1.5	8.1	6.6	57.2	117.4	1	59.1	12.3	479.3	245.9	16	1.9	211.5	90.0	551.7	955.3	99.61
REE 85	Rock Pulp	663	<1	35.0	2.0	10.4	10.7	45.4	154.4	2	55.4	8.7	438.6	170.2	19	2.0	426.1	75.3	523.0	904.3	93.06
REE 86	Rock Pulp	517	<1	9.5	2.0	7.6	5.5	12.3	131.7	<1	28.0	1.9	69.7	25.2	10	0.7	198.9	10.8	76.4	140.2	15.79
REE 87	Rock Pulp	474	2	21.4	1.5	8.3	12.8	39.1	130.5	1	28.1	7.5	390.7	110.3	16	1.9	472.4	38.7	346.0	667.1	75.04
REE 88	Rock Pulp	858	2	6.9	4.2	33.2	20.5	19.1	374.6	4	29.9	2.1	86.3	27.8	147	1.4	723.8	34.7	63.4	103.8	10.91
REE 89	Rock Pulp	454	<1	10.6	1.5	7.6	6.2	17.9	122.8	<1	26.5	3.5	249.0	91.5	10	0.6	246.6	33.2	234.1	438.2	46.13
REE 90	Rock Pulp	508	2	15.0	1.6	9.5	7.6	24.9	150.6	<1	30.3	4.2	209.4	56.6	14	0.7	286.2	28.3	207.0	381.5	39.67
REE 91	Rock Pulp	933	1	4.6	2.0	13.7	5.2	15.1	195.4	1	45.8	2.7	148.5	81.1	21	1.5	193.5	27.3	42.3	78.3	8.31
REE 92	Rock Pulp	759	<1	7.4	1.7	10.1	2.4	6.5	175.1	<1	44.1	1.0	42.8	19.4	12	<0.5	76.2	8.3	63.2	110.9	11.05
REE 93	Rock Pulp	195	16	18.9	0.8	16.8	18.4	160.7	26.7	7	143.7	8.8	1731.4	247.2	91	1.0	906.3	804.3	484.0	1130.5	108.52
REE 94	Rock Pulp	385	8	0.7	0.8	30.3	45.0	130.2	95.9	2	248.2	5.6	71.2	106.4	<8	1.6	1342.0	154.1	24.7	58.5	5.75
REE 95	Rock Pulp	267	11	2.7	0.5	29.6	2592.0	38.0	57.1	15	136.1	16.0	73.9	253.1	9	<0.5	>50000	695.3	211.9	428.5	47.24
REE 96	Rock Pulp	1018	11	2.6	7.3	28.8	4.6	48.0	206.1	3	352.3	1.5	145.9	23.8	15	0.6	204.6	427.5	103.9	238.0	28.03
REE 97	Rock Pulp	122	38	5.8	1.0	65.1	49.0	999.7	11.7	192	232.1	137.4	13.9	445.8	<8	4.3	1868.6	266.1	109.1	223.8	21.73
REE 98	Rock Pulp	661	7	0.7	1.0	41.9	3.9	4.5	123.9	3	280.1	0.4	97.4	21.3	<8	<0.5	172.4	341.0	158.8	347.3	43.53
REE 99	Rock Pulp	508	6	3.3	5.5	28.6	25.9	36.4	179.2	3	165.7	2.3	229.3	33.4	34	0.9	989.8	75.6	194.9	315.5	27.97
REE 100	Rock Pulp	209	13	3.0	1.0	54.2	56.0	101.4	153.1	25	213.9	7.0	38.7	14.5	11	<0.5	2772.9	253.8	70.5	172.9	21.02
REE 101	Rock Pulp	1270	8	4.0	3.4	26.8	11.8	38.0	211.9	3	376.3	2.2	70.5	12.3	30	0.7	406.3	88.7	72.1	148.6	13.90
REE 102	Rock Pulp	521	6	3.3	0.8	29.9	14.2	29.5	84.0	8	113.2	1.8	5.2	3.1	<8	0.6	585.4	138.0	44.3	104.3	15.04
REE 103	Rock Pulp	16	22	12.1	0.5	14.3	17.9	0.6	2.0	25	106.7	<0.1	1.7	0.8	33	<0.5	495.2	223.5	46.8	112.8	16.46

This report supersedes all previous preliminary and final reports with this file number dated prior to the date on this certificate. Signature indicates final approval; preliminary reports are unsigned and should be used for reference only.



www.acmelab.com

Acme Analytical Laboratories (Vancouver) Ltd.
 9050 Shaughnessy St Vancouver BC V6P 6E5 CANADA
 PHONE (604) 253-3158

Client: **MacGregor, R.A.**
 28 Ford St.
 Sault Ste. Marie ON P6A 4N4 CANADA

Project: Various 04/10/13
 Report Date: October 31, 2013

Page: 2 of 2

Part: 2 of 2

CERTIFICATE OF ANALYSIS

VAN13004258.1

Method	Analyte	4B	4B	4B	4B	4B	4B	4B	4B	4B	4B	4B
		Nd	Sm	Eu	Gd	Tb	Dy	Ho	Er	Tm	Yb	Lu
Unit		ppm	ppm	ppm	ppm	ppm	ppm	ppm	ppm	ppm	ppm	ppm
MDL		0.3	0.05	0.02	0.05	0.01	0.05	0.02	0.03	0.01	0.05	0.01
REE 78	Rock Pulp	75.1	13.08	2.12	11.37	1.79	10.91	2.10	6.20	0.99	6.57	0.93
REE 82	Rock Pulp	193.2	30.73	2.26	21.59	2.48	11.99	1.74	4.38	0.60	3.51	0.41
REE 83	Rock Pulp	35.2	8.82	1.82	10.21	1.59	9.75	1.74	4.57	0.65	4.19	0.56
REE 84	Rock Pulp	332.4	53.41	4.11	38.00	4.66	22.57	3.35	8.92	1.19	7.26	0.89
REE 85	Rock Pulp	305.9	46.52	3.03	32.51	3.57	17.01	2.60	6.54	0.92	6.14	0.84
REE 86	Rock Pulp	53.7	8.28	1.05	4.02	0.43	2.34	0.40	1.05	0.16	1.05	0.14
REE 87	Rock Pulp	248.9	34.55	4.32	20.48	1.92	9.56	1.25	3.26	0.47	2.90	0.39
REE 88	Rock Pulp	37.3	7.09	0.96	5.87	0.91	5.59	1.16	3.67	0.57	4.10	0.62
REE 89	Rock Pulp	156.8	24.69	1.97	14.70	1.62	7.70	1.18	2.80	0.41	2.56	0.33
REE 90	Rock Pulp	133.3	19.33	1.59	11.78	1.28	6.04	0.93	2.54	0.37	2.46	0.33
REE 91	Rock Pulp	28.1	5.33	0.51	4.89	0.84	5.43	0.89	2.47	0.39	2.38	0.34
REE 92	Rock Pulp	33.8	5.70	0.41	3.76	0.41	1.98	0.32	0.71	0.12	0.67	0.11
REE 93	Rock Pulp	408.0	94.65	8.17	110.85	20.06	143.21	29.81	90.18	13.55	85.06	11.71
REE 94	Rock Pulp	23.1	5.96	1.40	7.60	1.90	16.74	4.57	17.67	3.27	21.92	3.02
REE 95	Rock Pulp	181.5	37.14	5.35	45.30	9.05	80.49	24.46	114.15	25.23	206.92	34.10
REE 96	Rock Pulp	117.2	33.94	7.55	44.85	9.35	72.75	16.49	54.41	9.25	61.54	8.29
REE 97	Rock Pulp	79.0	20.20	3.58	23.43	4.79	38.28	8.82	33.90	7.99	78.09	15.02
REE 98	Rock Pulp	161.2	36.29	5.29	44.30	7.93	57.74	12.53	39.43	5.62	31.80	3.84
REE 99	Rock Pulp	81.7	11.37	1.40	11.06	1.75	12.24	2.60	8.22	1.36	9.17	1.49
REE 100	Rock Pulp	84.1	21.52	3.15	26.14	5.32	40.08	9.02	30.03	4.82	31.17	4.13
REE 101	Rock Pulp	47.1	8.64	1.46	8.79	1.52	11.90	2.73	9.22	1.50	9.72	1.36
REE 102	Rock Pulp	66.5	16.41	3.46	19.12	3.31	23.55	4.76	15.11	2.37	15.97	2.43
REE 103	Rock Pulp	68.6	16.62	2.50	19.00	3.77	30.26	8.03	37.57	10.60	116.93	24.50

This report supersedes all previous preliminary and final reports with this file number dated prior to the date on this certificate. Signature indicates final approval; preliminary reports are unsigned and should be used for reference only.



www.acmelab.com

Acme Analytical Laboratories (Vancouver) Ltd.
 9050 Shaughnessy St Vancouver BC V6P 6E5 CANADA
 PHONE (604) 253-3158

Client: **MacGregor, R.A.**
 28 Ford St.
 Sault Ste. Marie ON P6A 4N4 CANADA

Project: Various 04/10/13
 Report Date: October 31, 2013

Page: 1 of 1

Part: 1 of 2

QUALITY CONTROL REPORT VAN13004258.1

Method	Analyte	4B Ba	4B Be	4B Co	4B Cs	4B Ga	4B Hf	4B Nb	4B Rb	4B Sn	4B Sr	4B Ta	4B Th	4B U	4B V	4B W	4B Zr	4B Y	4B La	4B Ce	4B Pr	
Unit		ppm	ppm	ppm	ppm	ppm	ppm	ppm	ppm	ppm	ppm	ppm	ppm	ppm	ppm	ppm	ppm	ppm	ppm	ppm	ppm	
MDL		1	1	0.2	0.1	0.5	0.1	0.1	0.1	1	0.5	0.1	0.2	0.1	8	0.5	0.1	0.1	0.1	0.1	0.02	
Pulp Duplicates																						
REE 101	Rock Pulp	1270	8	4.0	3.4	26.8	11.8	38.0	211.9	3	376.3	2.2	70.5	12.3	30	0.7	406.3	88.7	72.1	148.6	13.90	
REP REE 101	QC	1276	5	4.5	4.0	27.1	12.6	37.6	214.3	3	380.7	1.9	70.8	11.9	29	<0.5	395.7	89.0	73.9	150.4	14.51	
Reference Materials																						
STD SO-18	Standard	481	<1	25.7	6.9	17.2	9.5	19.2	26.9	13	394.5	6.4	9.6	14.2	206	14.4	291.3	28.6	11.8	24.8	3.04	
STD SO-18	Standard	476	2	24.6	7.0	18.2	9.0	19.6	26.8	15	389.6	6.3	9.5	15.1	199	13.6	297.4	28.6	12.6	25.1	3.19	
STD SO-18 Expected		514	1	26.2	7.1	17.6	9.8	21.3	28.7	15	407.4	7.4	9.9	16.4	200	14.8	280	31	12.3	27.1	3.45	
BLK	Blank	1	<1	<0.2	<0.1	<0.5	<0.1	<0.1	<0.1	<1	<0.5	<0.1	<0.2	<0.1	<8	<0.5	1.0	<0.1	0.2	<0.1	<0.02	

This report supersedes all previous preliminary and final reports with this file number dated prior to the date on this certificate. Signature indicates final approval; preliminary reports are unsigned and should be used for reference only.



www.acmelab.com

Acme Analytical Laboratories (Vancouver) Ltd.
 9050 Shaughnessy St Vancouver BC V6P 6E5 CANADA
 PHONE (604) 253-3158

Client: **MacGregor, R.A.**
 28 Ford St.
 Sault Ste. Marie ON P6A 4N4 CANADA

Project: Various 04/10/13
 Report Date: October 31, 2013

Page: 1 of 1

Part: 2 of 2

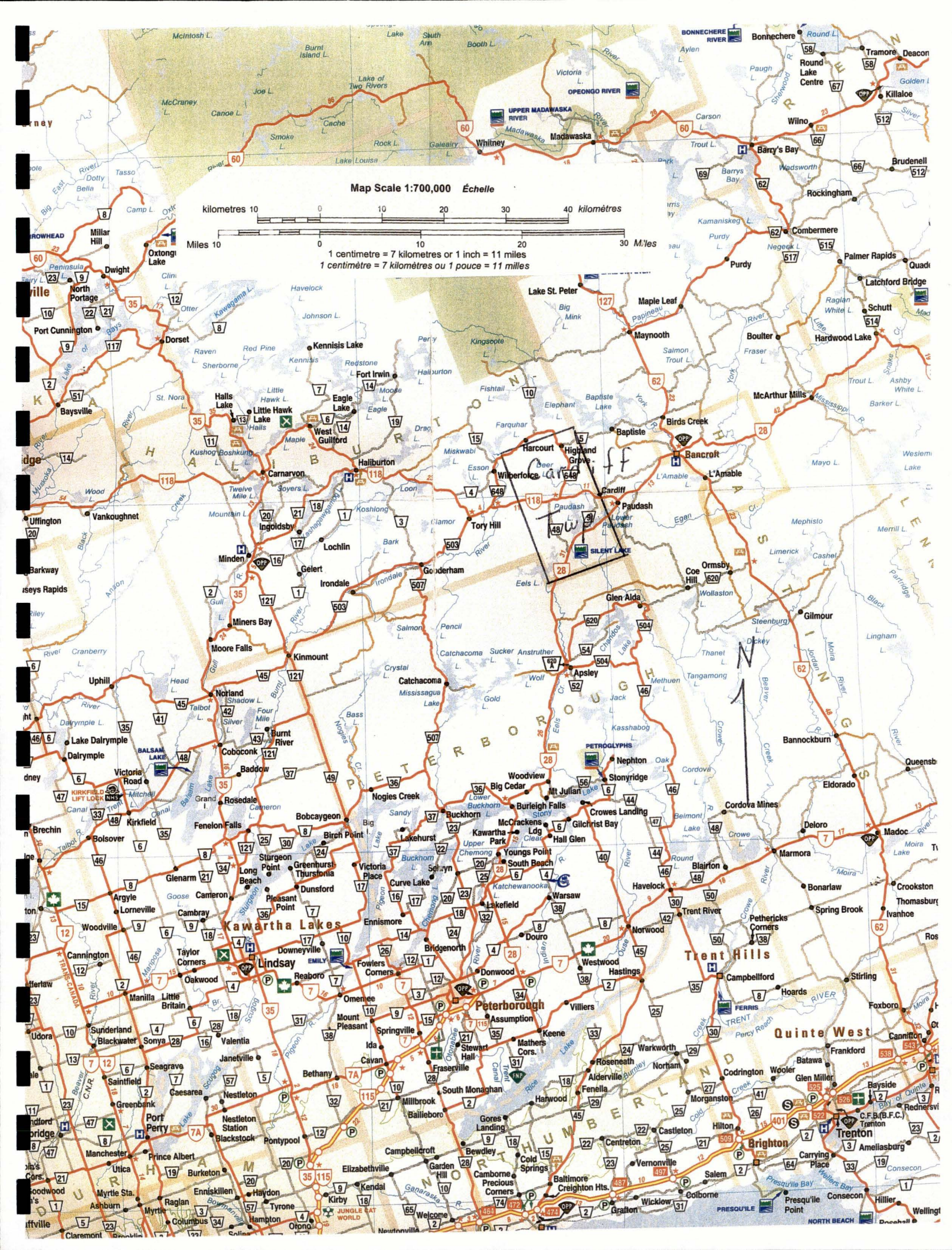
QUALITY CONTROL REPORT

VAN13004258.1

Method		4B	4B	4B	4B	4B	4B	4B	4B	4B	4B	4B
Analyte		Nd	Sm	Eu	Gd	Tb	Dy	Ho	Er	Tm	Yb	Lu
Unit		ppm	ppm	ppm	ppm	ppm	ppm	ppm	ppm	ppm	ppm	ppm
MDL		0.3	0.05	0.02	0.05	0.01	0.05	0.02	0.03	0.01	0.05	0.01
Pulp Duplicates												
REE 101	Rock Pulp	47.1	8.64	1.46	8.79	1.52	11.90	2.73	9.22	1.50	9.72	1.36
REP REE 101	QC	49.6	9.02	1.49	9.14	1.56	12.30	2.77	9.49	1.59	10.13	1.41
Reference Materials												
STD SO-18	Standard	12.9	2.79	0.78	2.76	0.44	2.76	0.54	1.66	0.25	1.61	0.23
STD SO-18	Standard	13.2	2.86	0.79	2.62	0.43	2.92	0.60	1.67	0.26	1.50	0.27
STD SO-18 Expected		14	3	0.89	2.93	0.53	3	0.62	1.84	0.27	1.79	0.27
BLK	Blank	<0.3	<0.05	<0.02	<0.05	<0.01	<0.05	<0.02	<0.03	<0.01	<0.05	<0.01

Appendix III

Location Plans

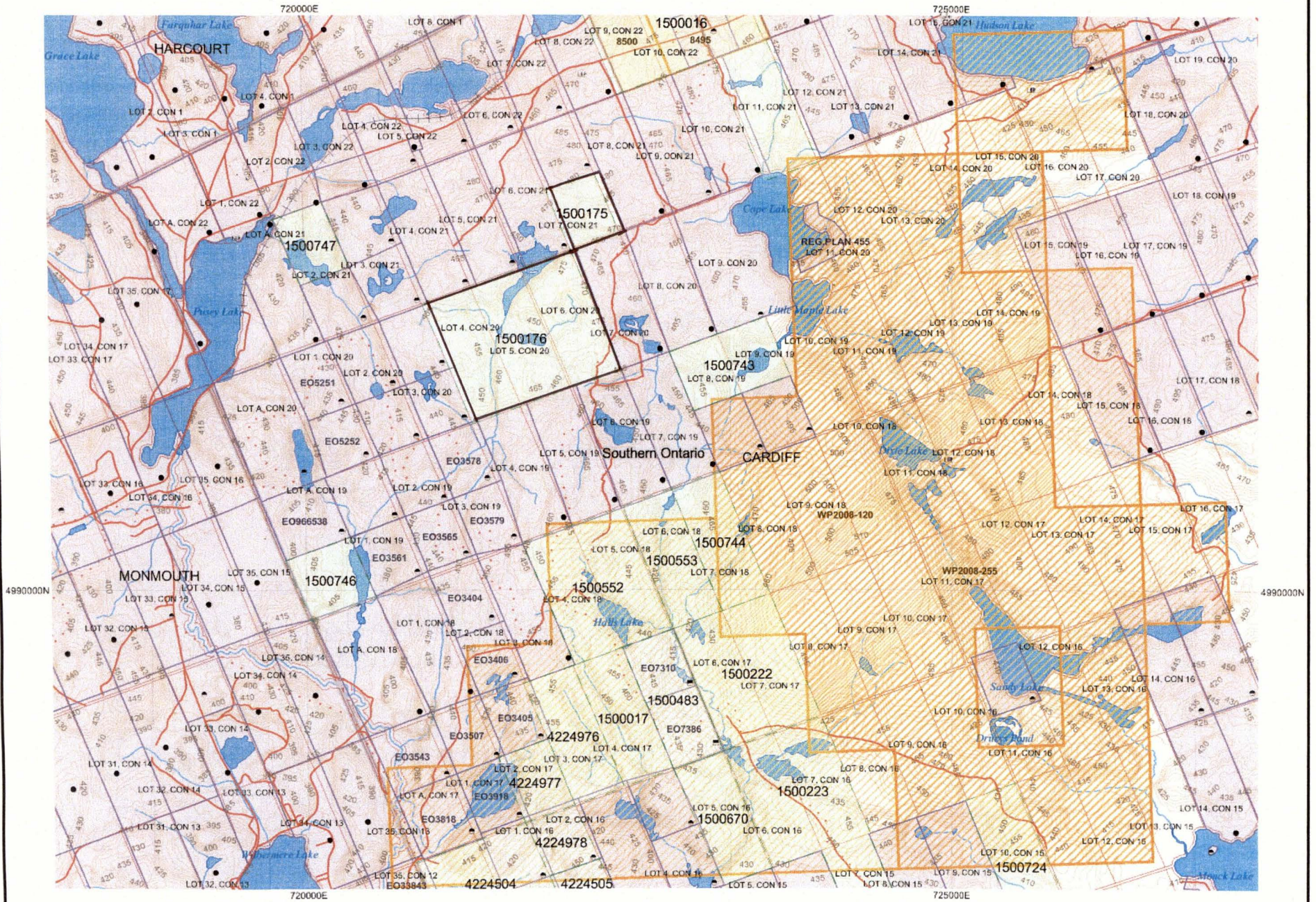


Map Scale 1:700,000 Échelle

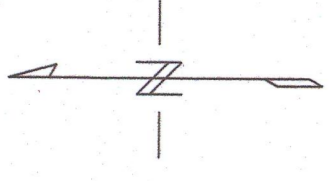
kilometres 10 0 10 20 30 40 kilometres

Miles 10 0 10 20 30 Miles

1 centimetre = 7 kilometres or 1 inch = 11 miles
1 centimètre = 7 kilomètres ou 1 pouce = 11 milles



UTM Zone 17
5000m grid



2.55830

- July 23, 2013
- July 24, 2013
- July 25, 2013
- July 18, 2014

SKEAD HOLDINGS LTD.
CARDIFF -RE PROPERTY
NORTH BLOCK
Cardiff Township, Ontario

PROSPECTING TRAVERSE PLAN MAP

Traverses by: C. Jason Ploeger,
 Bruce Lavalley and Claudia Morage
 Processed by: C. Jason Ploeger, B.Sc.
 Map Drawn By: C. Jason Ploeger, B.Sc.

