

# Prospecting Trip to Claim 1174222

---

On October 22, 2012 a one day trip was made to claim 1174222. The claim is located in the Kenora Mining Division. The claim map is Bennett Lake Area (G-2667).

## Topography

In general the area is relatively flat. The steepest incline is probably at the start of the trail to the claim. The area was logged many years ago. Roads that are still marked on Claimaps have long since grown over. Vegetation is mainly poplar with the odd spruce and pine. The area was not replanted after logging.

## History

A low grade copper discovery was made near Polygon Lake in the 1950s. The claim was taken to lease almost immediately and thus very little assessment work has been filed. There are two geological reports I have used. They are Geology of Bennett Tanner (Young 1960) and OFR 5879 Precambrian Geology of Wild Potato Lake (Shanks 1994).

## Personnel

Kim Davis

Rick Angove

## Location and Access

Road access is the simplest means to access the claim. The Manion Lake Road exits highway 11 about 10 kilometres east of Mine Centre. Follow the Manion Lake Road for about 2 kilometres and then turn east onto the Little Turtle River Road. Follow this for about 7 kilometres. From this point it is about a one hour walk south to the claim. We have a relatively easy trail to follow to get there.

## Prospecting Target

This trip was a follow up to our trip of October 3/2012. We had discovered a highly magnetic zone but were unable to expose much with only a grubhoe. We brought in a shovel and pick to excavate a trench on this trip.

The Atikokan-Mine Centre Airborne Survey (Map 80506) shows a highly magnetic zone as well as several 6 channel anomalies in the area. Noranda has a report filed from May 1966. The attached map shows a drill hole north of Polygon Lake that intersected massive sulphides. No assay values are given. As well the J.E.M survey outlines a zone through the area that is worth investigating. There are no positive indicators of where the drill hole was collared and there was no GPS use back then. It is a little difficult to determine exactly where the hole was collared and where the zone actually is. My goal was locating a surface exposure of the zone.

## Prospecting Results

We had two goals on this trip. The first was simply looking for a route that would provide easier access. There is an area about a kilometre or so west of our current trail that has been logged off and has no new growth. We stayed on the cut to a point that was about 100 metres north and 1200 metres west of the zone. We followed as direct a route as possible to the claim. There were only a couple places that were not suitable for a quad trail. I think this area may be better than our current trail. We did walk out on our trail.

The second goal was digging a trench to bedrock where we found the highly magnetic zone. We dug a trench down about 3 feet and it is about 6 feet long and about 2 feet wide at the bottom. The rock at the bottom is bedrock. It is weathered badly even at that depth. The rock contains many voids that I suspect were filled with sulphide. It is highly magnetic. There are some sulphides visible in some pieces.

I have attached several pictures of the trench and the samples we examined. The descriptions are included separately.

## Conclusions

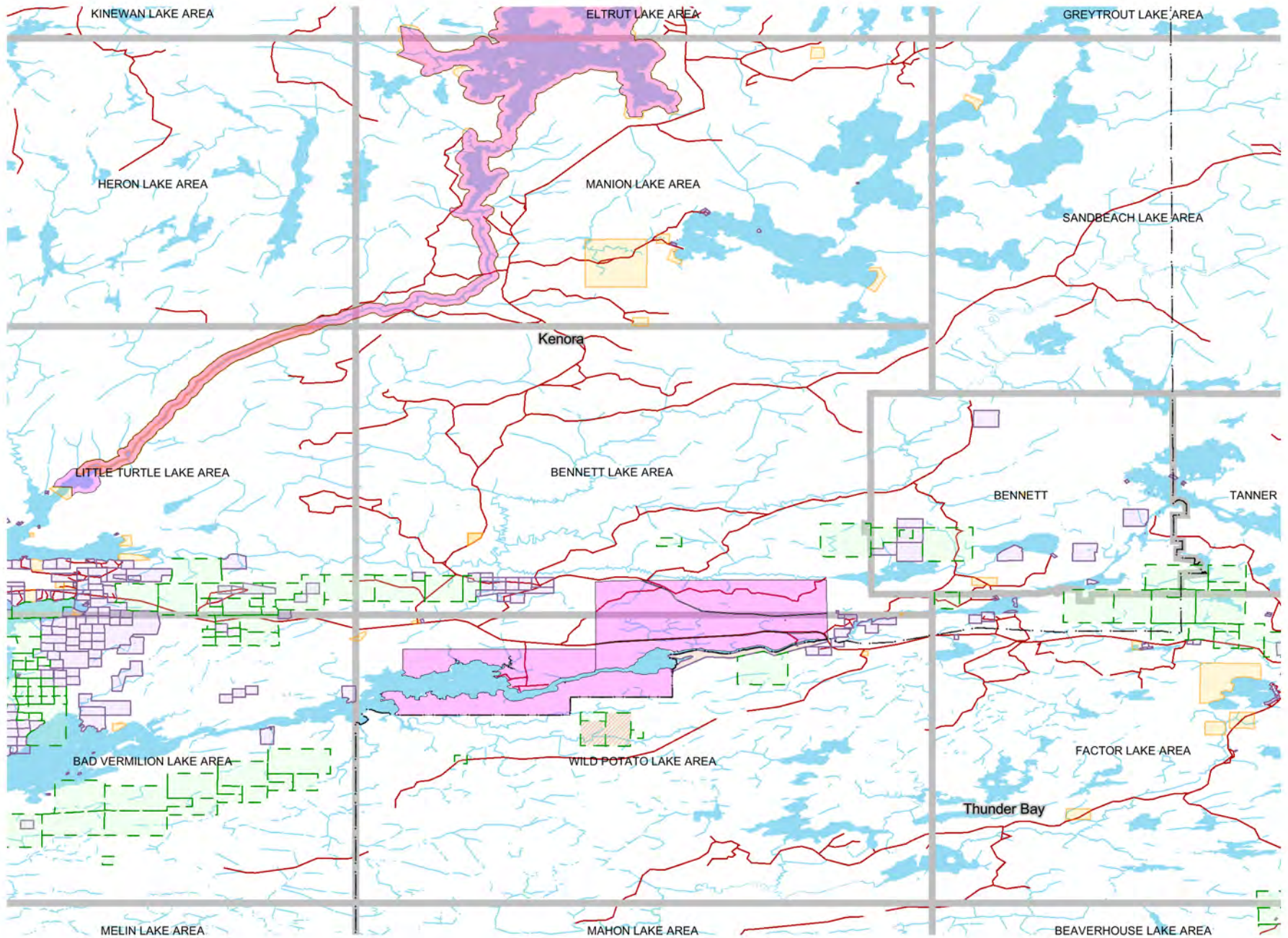
More stripping is required. I would not be able to access the claim using our current trail with my backhoe and quad. The spot to the west that we walked in on this time may provide better access but we will have to find a way around a couple of spots that are too steep for the quads. We will walk that way and try to find a route around some of the obstacles.

Cutting or flagging a small grid and then doing detailed mag would outline the zone quickly. I think even an old fashioned dip needle would work well to follow the zone. This work should be carried out in the fall. As the pictures show the area is quite clear once the leaves have fallen. My goal was locating an exposure of the massive sulphides encountered in the drill hole. We may have accomplished that.

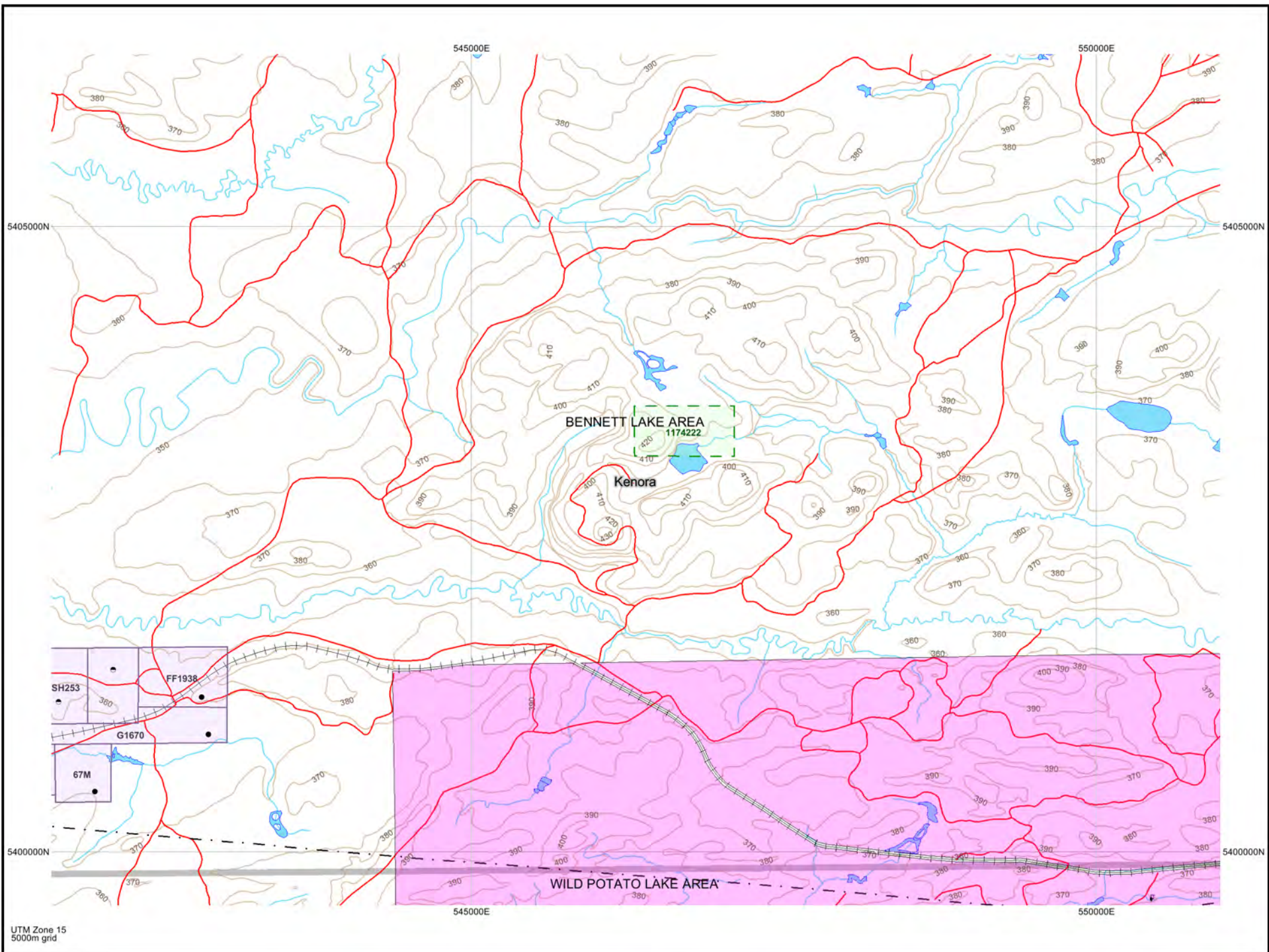
Rick Angove

E30099









# Description of Pictures Claim 1174222

---

**Oct. 22/ 2012**

**Picture 002** This is a picture of the east end of the trench. We noticed a lot of gold coloured flecks in the ground. Unfortunately they did not show up as well in the picture. They are the light coloured spots. I tried using a magnetic to pick them up but so much of the ground is magnetic everything came with the magnet. I suspect pyrrohtite.

Pictures 003-5 These are pictures of one rock. The first shows its size in relation to my grubhoe. The next is how it broke with a very light tap with the grubhoe. The next is what remains after a few more taps with the grubhoe. The rock is highly magnetic and some pyrrohtite is visible but not much. It appears most of the sulphide has been weathered away in spite of the depth.

Picture 006 This is a view facing east. The gruboe has a 36 inch handle. The head of the hoe is sitting on bedrock.

Picture 007 There was a white coloured area about 5 inches or so across. It just crumbled as the grubhoe was scraped across it. It was a sugary texture.

Picture 008-9 You can see the blue coloured area. It was on the south wall at a depth of almost 2 feet. The second picture is just a closer view.

Pictures 010-012 These are pictures of the rocks we broke in the centre are of the trench. Again highly magnetic with minor sulphides.

Picture 013 These are rocks that I broke out at the west end of the trench. They are very similar to the centre zone in colour and texture. They are magnetic and have minor sulphide content.

Pictures 014-017 These are a series of pictures looking straight down at the bottom of our trench. The rock almost looks to be flat lying. This is best shown in 015.

Picture 018 This is a picture of the small ridge adjacent to the east end of the trench. The exposed rock is clearly vertical. Compare it to 015. Stripping a larger area would give a better indication of the dip of the magnetic zone. The ridge has only a few sulphides near the magnetic zone and I did not see any on the other side of it only about 5-6 feet away.

Picture 606 This is a picture from the old trenches at the east side of Polygon Lake. I have only included it for a comparison of the rock at Polygon Lake and the trench we started. They are about 500 metres apart. The rock has not been weathered to the extent that we are seeing in the new trench.









































































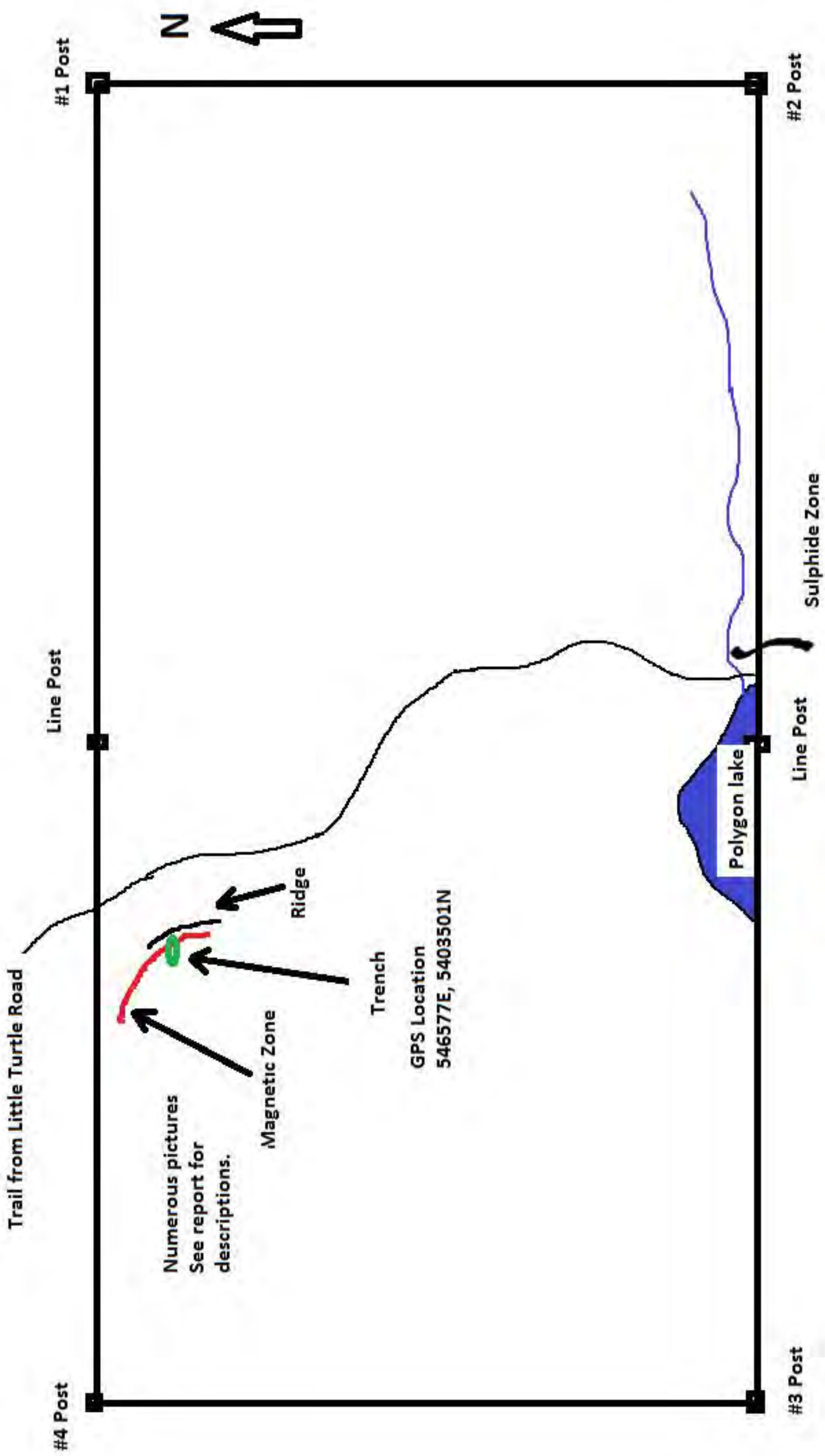












Trail from Little Turtle Road

#4 Post

Line Post

#1 Post

Numerous pictures  
See report for  
descriptions.

Magnetic Zone

Ridge

Trench

GPS Location  
546577E, 5403501N

Polygon lake

#3 Post

Line Post

Sulphide Zone

#2 Post

