

We are committed to providing [accessible customer service](#).
If you need accessible formats or communications supports, please [contact us](#).

Nous tenons à améliorer [l'accessibilité des services à la clientèle](#).
Si vous avez besoin de formats accessibles ou d'aide à la communication, veuillez [nous contacter](#).

2017 DIAMOND DRILLING PROGRAM: NIPISSING DIABASE PROJECT

LONG TOWNSHIP, SAULT STE. MARIE MINING DIVISION, ONTARIO, CANADA

DARIEN AGGREGATES INC.

222 MARTINDALE RD.

RR#3

ST. CATHARINES, ON

L2R 6P9

August 8th, 2017

Prepared By:



JMK EXPLORATION CONSULTING

147 LAKESIDE DR.

NORTH BAY, ONTARIO

P1A 3E1

JOERG KLEINBOECK, B.SC., P.GEO.

TABLE OF CONTENTS

1.0 INTRODUCTION	2
2.0 PROPERTY DETAILS	3
2.1 Location and Access	3
2.2 Topography and Vegetation	4
2.3 Claims	4
3.0 PREVIOUS WORK.....	5
4.0 GEOLOGY	6
4.1 Regional and Property Geology	6
5.0 PHASE 1 DIAMOND DRILLING PROGRAM.....	7
5.1 DIAMOND DRILLING.....	7
6.0 CONCLUSIONS & RECOMMENDATIONS.....	10
6.0 REFERENCES	11

LIST OF FIGURES

Figure 1: Location of the Nipissing Diabase Project.....	3
Figure 2: Tenure of the Nipissing Diabase Project.....	6
Figure 3: Phase 1 Diamond Drill Hole Locations.....	9

LIST OF TABLES

Table 1: Claim Details of the Nipissing Diabase Project.....	4
Table 2: Diamond Drill Hole Details.....	8

LIST OF APPENDICES

Appendix I Statement of Qualifications	
Appendix II: Diamond Drill Logs	
Appendix III: Sections	

MAPS

Map 1: Diamond Drill Hole Location Map (5000 scale)	
Map 2: Diamond Drill Hole Location Map (750 scale)	

1.0 INTRODUCTION

JMK Exploration Consulting was contracted by Darien Aggregates Inc. (“Darien”) to complete a technical report for assessment purposes on a recently completed diamond drilling on the Nipissing Diabase Project (“Property”).

The Property is situated in Long Township, located approximately 140 km west-southwest of Sudbury, Ontario. The Project is bounded by UTM coordinates 363800E to 367650E, and 5116850N to 5121915N (NAD83, Z17N) and is covered by National Topographic System (NTS) map sheets 41J/07 and 41J/02. The Property consists of 9 contiguous unpatented mining claims, as well as 1 non-contiguous unpatented mining claim totalling 53 units (848 ha).

Between May 12th and June 12th, 2017, 13 diamond drill holes totalling 822.0 m was completed. The drilling program was designed to intersect the geological contact between the Nipissing Diabase and Cutler Granite in the area where Darien expects to commence quarry operations in the near future. Geological mapping completed in 2016 mapped the contact between the two rock types at surface, however the dip of the contact remained unknown. The results from the recently completed diamond drilling program indicate that the contact dips southwesterly at 55 degrees, allowing Darien to finalize their mining plan for the area.

2.0 PROPERTY DETAILS

2.1 Location and Access

The Nipissing Diabase Project is situated in Long Township, located approximately 140 km west-southwest of Sudbury, Ontario (Figure 1). The Project is bounded by UTM coordinates 363800E to 367650E, and 5116850N to 5121915N (NAD83, Z17N) and is covered by National Topographic System (NTS) map sheets 41J/07 and 41J/02.

Access to the claims is provided by an atv trail located at the end of Pronto Road, located 15 km east of Blind River, Ontario. The western part of the Property can be accessed by boat through Lake Lauzon.

Limited resources and lodging are available in the nearby town of Blind River. However, a full range of equipment, supplies, services, and skilled labour that would be required for any exploration and mining work are available in the nearby city of Sudbury, Ontario.

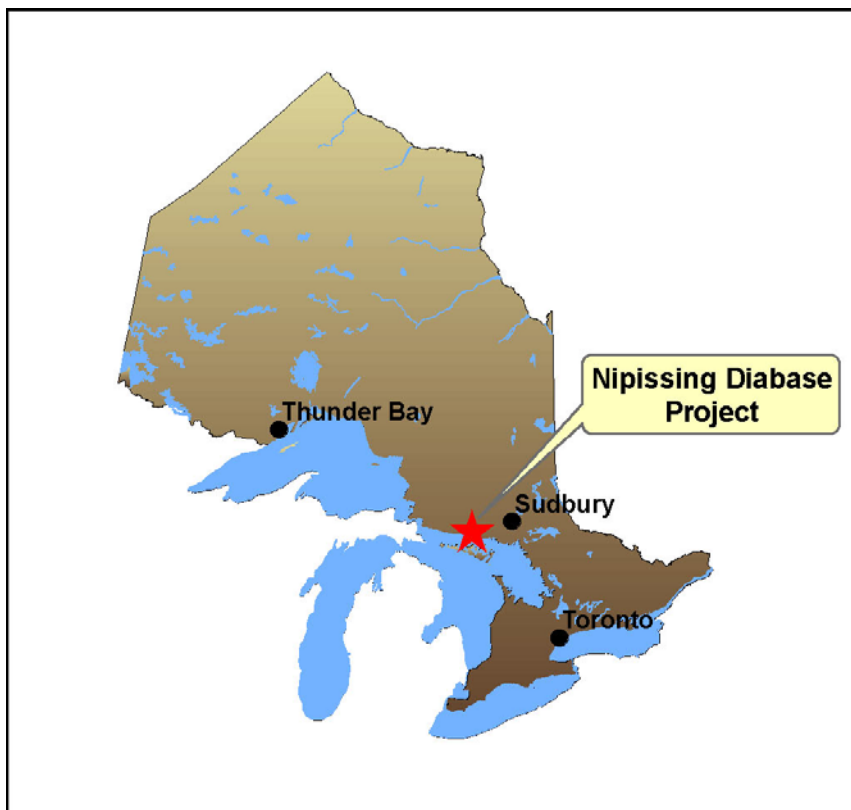


Figure 1: Location of the Nipissing Diabase Project.

2.2 Topography and Vegetation

The topography of the area is variable from relatively flat lying, gentle relief in the area of Highway 17 and the north shore of Lake Huron where the elevation is approximately 180 m ASL to relatively rugged with a maximum of 270 m ASL. The topography is controlled by bedrock features and the Nipissing Diabase forms topographic highs with locally steep scarps into lakes and drainages (Lavigne, 2009).

2.3 Claims

The Nipissing Diabase Project consists of 9 contiguous unpatented mining claims, as well as 1 non-contiguous unpatented mining claim totalling 53 units (848 ha) (Figure 2). Details of the unpatented mining claims are provided in Table 1. Darien acquired the property through a purchase agreement and staking.

Table 1: Claim Details of the Nipissing Diabase Project.

Township / Area	Claim Number	Recording Date	Claim Due Date	Work Required	Total Applied	Total Reserve	Claim Bank
LONG	3009531	2009-Nov-25	2017-Nov-25	\$854	\$18,746	\$0	\$0
LONG	4219196	2007-Jun-08	2017-Sep-08	\$5,900	\$48,100	\$0	\$0
LONG	4223995	2007-Jun-08	2017-Sep-08	\$3,904	\$39,296	\$906	\$0
LONG	4242337	2012-Jul-17	2020-Jul-17	\$344	\$2,456	\$0	\$0
LONG	4268515	2012-Jan-17	2018-Jan-17	\$1,600	\$6,400	\$0	\$0
LONG	4268517	2012-Jan-17	2018-Jan-17	\$1,600	\$6,400	\$0	\$0
LONG	4268518	2012-Jan-17	2018-Jan-17	\$785	\$3,215	\$0	\$0
LONG	4277091	2012-Jan-17	2018-Jan-17	\$1,600	\$6,400	\$0	\$0
LONG	4277092	2012-Jan-17	2018-Jan-17	\$1,200	\$4,800	\$0	\$0
LONG	4278999	2016-Jun-13	2018-Jun-13	\$400	\$0	\$0	\$0

3.0 PREVIOUS WORK

2006: Darien Resources Inc. completed limited reconnaissance prospecting.

2009: Darien Resources Inc. completed 5 diamond drill holes totalling 301 m located to the northwest of the current land package.

2011: Darien Resources Inc. completed trenching and bulk sampling on claims 3009531, 4219196, and 4223995.

2015: Darien Aggregates Inc. completed the installation of 7 ground water monitoring wells. The diamond drill core was logged and submitted for assessment.

2016: Darien Aggregates Inc. completed geological mapping on claim 3009531.

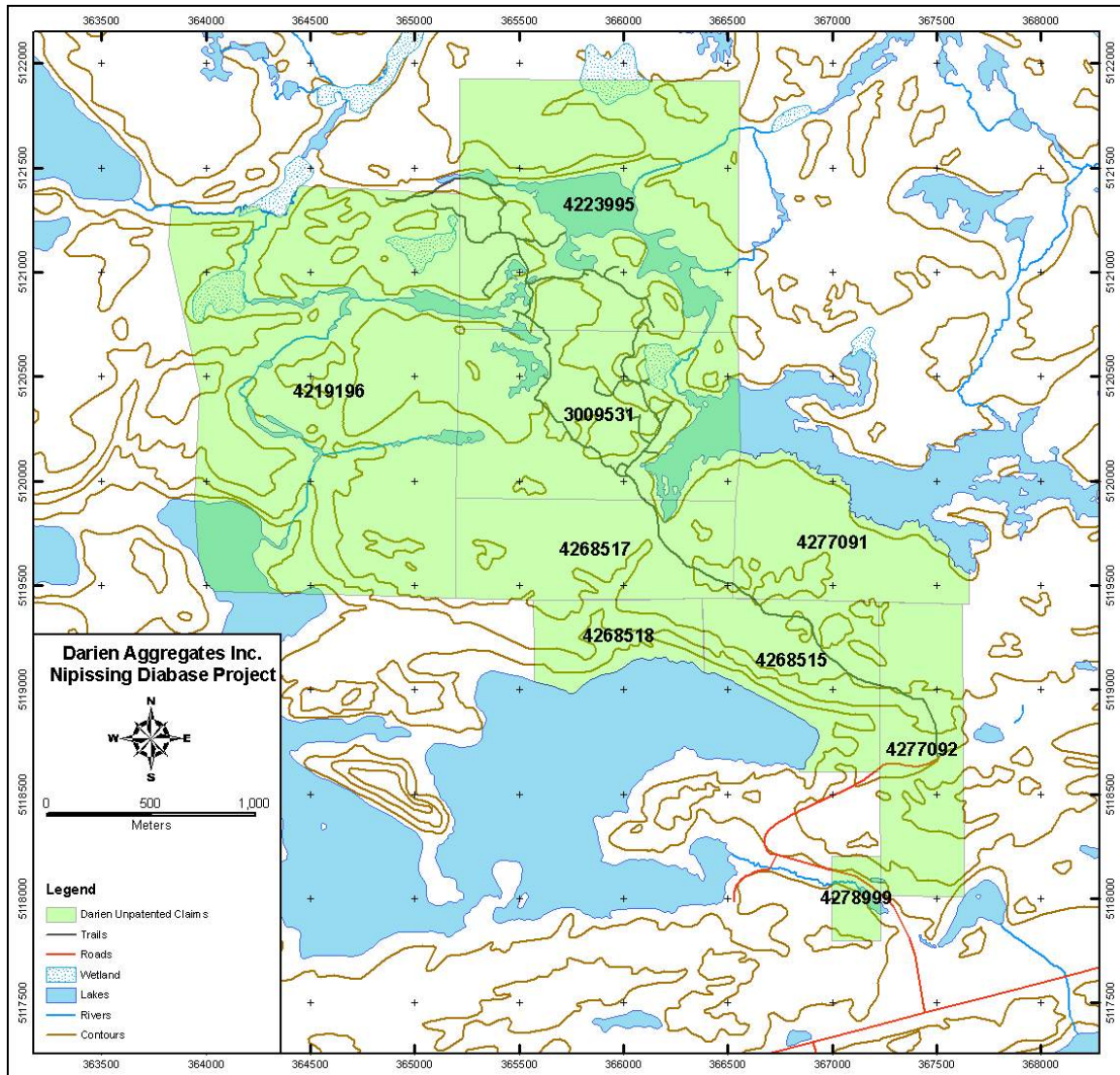


Figure 2: Tenure of the Nipissing Diabase Project, Long Township.

4.0 GEOLOGY

4.1 Regional and Property Geology

The Project is located within the Southern Structural Province of the Canadian Shield which, in general terms, consists of an Archean basement overlain by the Early Proterozoic Huronian Supergroup and intruded by a number of felsic to mafic intrusive bodies that range in age from Early to Middle Proterozoic. The Archean rocks exposed on in the Project area consist dominantly of massive to gneissic granitic rocks. Huronian

rocks present in the Project area include the Lower and Middle Mississagi Formations (feldspathic quartzite, arkose to greywacke, siltstone and argillite respectively) and the Gowganda Formation (interbedded conglomerate, feldspathic quartzite, argillite, and siltstone). The southeastern part of the main block of claims include mafic metavolcanic rocks and related chloritic sedimentary rocks. Both the Archean granitic rocks and the Huronian sedimentary rocks are intruded by mafic intrusive rocks known as Nipissing Diabase during the Hudsonian Orogeny at approximately 2,155 Ma. In the Project area, these intrusions form west to northwest trending, vertical to steeply dipping, dyke or sill-like bodies that typically range in thickness from a few metres to < 100 metres, however, a number of thicker intrusions have been mapped. The dykes consist dominantly of diabase, gabbro, and diorite (Lavigne, 2009).

5.0 PHASE 1 DIAMOND DRILLING PROGRAM

5.1 DIAMOND DRILLING

In the spring of 2017, Darien completed 13 diamond drill holes totalling 822.0 m. The drilling was completed between May 12th and June 12th, 2017. Diamond drill hole coordinates are provided in Table 2.

The drilling program was designed to intersect the geological contact between the Nipissing Diabase and Cutler Granite in the area where Darien expects to commence quarry operations in the near future. Geological mapping completed in 2016 mapped the contact between the two rock types at surface, however the dip of the contact remained unknown. Results from the recently completed diamond drilling program generally indicate that the contact dips southwesterly at 55 degrees. A fault, intersected from 38.40 to 40.80 m in diamond drill hole DA17-24, and from 59.00 to 60.57 m in diamond drill hole DA17-25, may be related to a structure that has vertically displaced the intrusive contact approximately 35 m in diamond drill hole DA17-25.

Once the core had been logged and sampled, metal tags were attached inscribed with the hole number, box number, and corresponding interval. The core was then cross piled and stored at a storage facility located 134 Imperial Road, North Bay, Ontario.

Drill logs and sections are provided in Appendices II and III respectively.

Maps 1 and 2, located in the back pocket, display the diamond drill hole locations and projected trace in relation to the claim fabric.

Table 2: Diamond Drill Hole Details.

DDH	Azimuth	Dip	Length (m)	Easting	Northing	Elevation (m)
DA17-13	220	-45	124	366004.15	5120459.25	245.02
DA17-14	0	-90	50	366004.55	5120459.66	245.06
DA17-15	40	-45	70	365948.91	5120416.14	242.77
DA17-16	0	-90	50	365948.47	5120415.70	242.89
DA17-17	40	-45	56.5	365873.16	5120507.30	245.12
DA17-18	40	-65	50.5	365872.92	5120507.07	245.06
DA17-19	0	-90	51	365973.00	5120559.00	250.00
DA17-20	0	-90	50	366057.26	5120427.15	246.13
DA17-21	40	-45	50	366077.80	5120313.53	250.87
DA17-22	40	-60	60	366077.50	5120313.23	251.05
DA17-23	40	-85	66	366077.41	5120313.13	251.02
DA17-24	40	-45	60	366011.14	5120349.19	251.34
DA17-25	40	-90	69	366010.81	5120348.80	251.40

Note: datum in NAD83, Z17N

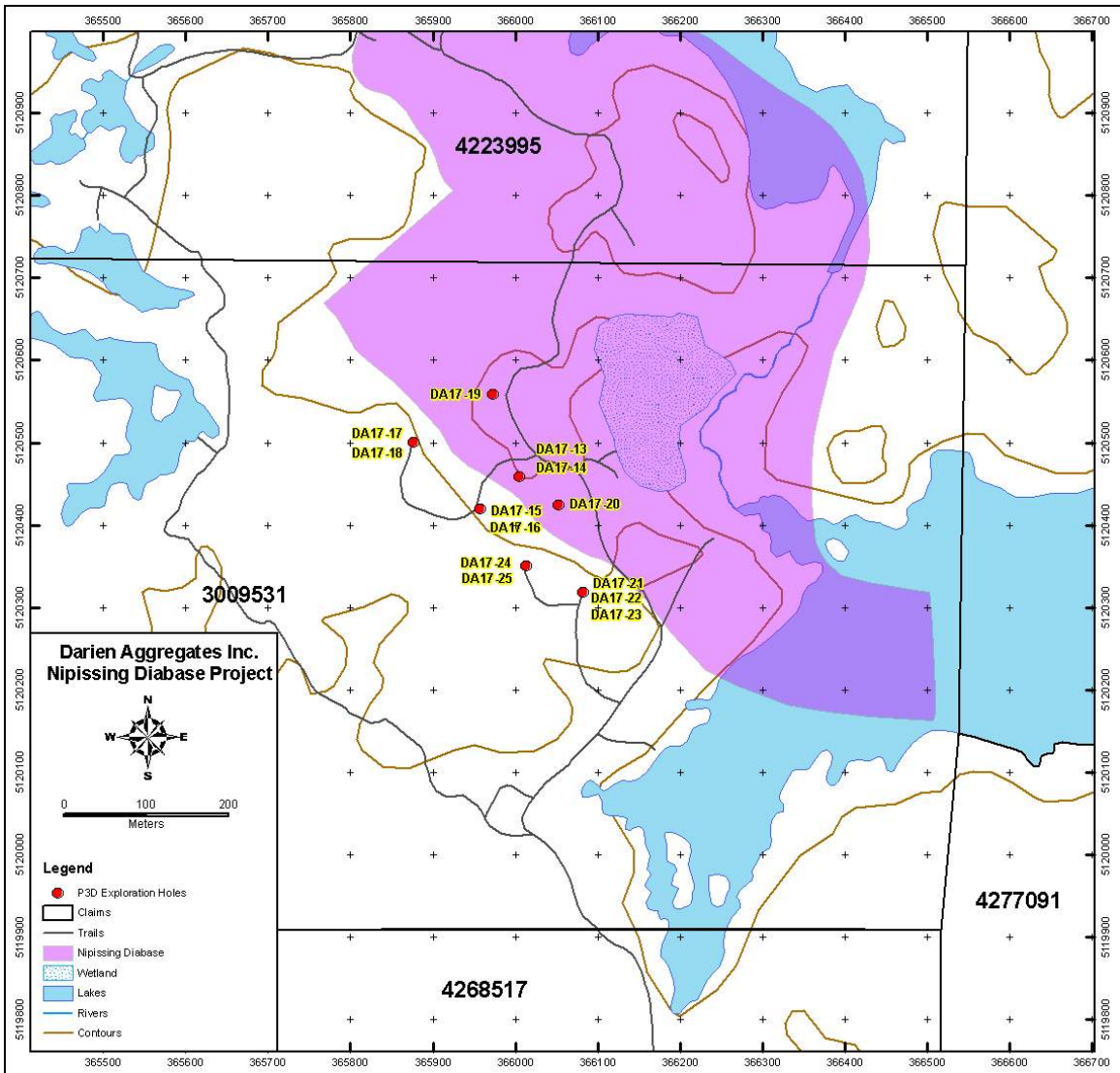


Figure 3: Phase 1 Diamond Drill Hole Locations.

6.0 CONCLUSIONS & RECOMMENDATIONS

The lithological contacts of the Nipissing Diabase were found to differ from what is shown on OGS Map 2186. The updated geological interpretations should be incorporated into Darien's future plans for obtaining an aggregate permit for this area.

A detailed gps-orientated magnetometer survey is recommended to be completed over the areas that Darien intends to quarry. The survey should be able to provide Darien with information on the geological nature of the intrusive contact, to delineate known and unknown structures, and to identify any areas of alteration within the Nipissing Diabase.

Darien should also complete a reconnaissance geological mapping in the southern half of unpatented claim 4219195 to verify that there are no further occurrences of Nipissing Diabase.

6.0 REFERENCES

Johns, G.W., McIlraith, S., and Muir, T.L. 2003. Precambrian Geology compilation map –Sault Ste. Marie-Blind River sheet; Ontario Geological Survey, Map 2670, scale 1:250,000.

Kleinboeck, J.M., 2016. 2016 Geological Mapping Program, Nipissing Diabase Project. 12 p.

Robertson, J.A., 1970. Long & Spragge Townships & part of Indian Reserve #7. Ontario Geological Survey. Map 2186, scale 1:31,680.

Lavigne, J. 2009. Report on Diamond Drilling on Claim 4223988, Nipissing Diabase Project, Long and Striker Townships, Sault Ste. Marie Mining Division. Darien Resources Inc., 11 p.

Appendix I

Statement of Qualifications

I, Joerg Martin Kleinboeck of 147 Lakeside Drive, North Bay, Ontario, do hereby certify that:

I am a graduate of Laurentian University, Sudbury, Ontario with a B.Sc. Geology, 2000, and have been practising my profession as a geologist since.

I am a member with the Association of Professional Geoscientists of Ontario (#1411).

I am a member of the Prospectors & Developers Association of Canada (PDAC).

I hold no interests in the securities of Darien Aggregates Inc.



Joerg Martin Kleinboeck
JMK Exploration Consulting
North Bay, Ontario
August 8th, 2017

Appendix II

Darien Aggregates Inc.

DDH:	DA17-13	Claims title:	3009531	Section:	
		Township:	Long	Level:	Surface
		Range:		Work place:	Algoma Mills
Contractor:	Summit Drilling Ltd.	Lot:			
Author:	Joerg Kleinboeck	Start date:	5/12/2017	Description date:	5/25/2017
		End date:	5/14/2017		

Collar

	System 1
Azimuth: 220.00°	East 366005
Dip: -45.00°	North 5120459
Length: 124.00	Elevation 250

Down hole survey

Type	Depth	Azimuth	Dip	Invalid	Type	Depth	Azimuth	Dip	Invalid

Number of samples:	0
Number of QAQC samples:	0
Total sampled length:	0.00

Description:

Core size: BQTK	Cemented: No	Stored: Yes
-----------------	--------------	-------------

Darien Aggregates Inc.

Description

0.00	54.00	<p>NDIA; mg; mass</p> <p>Nipissing Diabase; medium grained; massive</p> <p>casing driven to 0.5m.</p> <p>grey medium to locally coarse grained gabbro/weakly altered gabbro/ronorite?</p> <p>non-magnetic.</p> <p>lower contact transitional.</p>
0.00	4.20	<p>FRC</p> <p>Fractured</p> <p>heavily fractured, RQD=20%</p>
0.00	54.00	<p>Py00.1</p> <p>Pyrite 0.1%</p> <p>trace disseminated pyrite, generally unmineralized.</p>
10.20	13.10	<p>FRC</p> <p>Fractured</p> <p>moderately fractured, RQD=25-30%</p>
12.65	13.00	<p>FD</p> <p>Felsic Dyke</p> <p>pink irregular felsic veinlets <3cm in width.</p>
15.45	16.15	<p>FRC</p> <p>Fractured</p> <p>heavily fractured, RQD=0%</p>
31.36	31.49	<p>FD</p> <p>Felsic Dyke 55°</p> <p>pink aplitic dyke orientated @ 55 deg TCA.</p>
54.00	80.39	<p>NDIA; mg-cg</p> <p>Nipissing Diabase; medium to coarse grained</p> <p>dark grey to green medium to coarse grained gabbro/gabbro/ronorite? with occasional very coarse grained sections typically <10cm in width.</p> <p>weakly magnetic due to fine to medium interstitial magnetite throughout.</p> <p>lower contact sharp/wavy, generally @ 50 deg TCA.</p>
54.00	80.39	<p>Mt00.5</p> <p>Magnetite 0.5%</p> <p>0.5% to 1% fine to medium interstitial magnetite.</p>
80.39	88.27	<p>MD; fg; POR</p>

Darien Aggregates Inc.

Description

Mafic Dyke 45°; fine grained; Porphyritic

dark grey to black fine grained mafic dyke with 5-10% phenocrysts of plagioclase, locally clustered (glomeroporphyritic texture).

upper contact chilled over 20cm.

non-magnetic.

lower contact sharp @ 45 deg TCA.

88.27 124.00 NDIA; mg-cg

Nipissing Diabase; medium to coarse grained

as from 54.00 to 80.39m.

114.60 114.68 FD

Felsic Dyke 55°

pink felsic dyke, contacts sharp @ 55 deg TCA.

Darien Aggregates Inc.

DDH:	DA17-14	Claims title:	3009531	Section:	
		Township:	Long	Level:	Surface
		Range:		Work place:	Algoma Mills
Contractor:	Summit Drilling Ltd.	Lot:			
Author:	Joerg Kleinboeck	Start date:	5/14/2017	Description date:	5/26/2017
		End date:	5/15/2017		

Collar

Azimuth: 0.00°
 Dip: -90.00°
 Length: 50.00

System 1

East	366005
North	5120459
Elevation	250

Down hole survey

Type	Depth	Azimuth	Dip	Invalid

Type	Depth	Azimuth	Dip	Invalid

Number of samples: 0
 Number of QAQC samples: 0
 Total sampled length: 0.00

Description:

Core size: BQTK

Cemented: No

Stored: Yes

Darien Aggregates Inc.

Description		
0.00	16.17	<p>NDIA; mg; mg Nipissing Diabase; medium grained; medium grained dark grey medium grained massive gabbro/gabbronorite. moderately magnetic. lower contact gradational but abrupt.</p>
0.00	16.17	<p>Mt00.5 Magnetite 0.5% 0.5-1% interstitial magnetite throughout.</p>
16.17	17.80	<p>NDIA; cg; mass Nipissing Diabase; coarse grained; massive dark grey coarse grained massive gabbro. moderately magnetic. lower contact gradational but abrupt.</p>
16.17	17.80	<p>Mt00.5 Magnetite 0.5% 0.5-1.0% interstitial magnetite throughout.</p>
17.80	28.85	<p>NDIA; mg; mass Nipissing Diabase; medium grained; massive dark grey medium grained massive gabbro/gabbronorite. local felsic veining from 21.90-22.30m. weakly magnetic. lower contact gradational but abrupt.</p>
17.80	28.85	<p>Mt01 Magnetite 1% 0.5-1.0% intersitial magnetite. occasional speck of pyrite.</p>
18.75	21.90	<p>FRC Fractured heavily fractured, RQD=30%</p>
28.85	36.60	<p>NDIA; cg; mass Nipissing Diabase; coarse grained; massive dark grey and white coarse grained generally massive gabbro with minor gabbronoritic sections <20cm in width. lower contact gradation but abrupt. non-magnetic.</p>

Darien Aggregates Inc.

Description

36.60	39.05	NDIA; mg; mass Nipissing Diabase; medium grained; massive as from 17.80 to 28.85m.
39.05	41.50	NDIA; cg; mass Nipissing Diabase; coarse grained; massive as from 28.85 to 36.60m.
41.50	50.00	NDIA; mg; mass Nipissing Diabase; medium grained; massive as from 17.80 to 28.85m.

Darien Aggregates Inc.

DDH:	DA17-15	Claims title:	3009531	Section:	
		Township:	Long	Level:	Surface
		Range:		Work place:	Algoma Mills
Contractor:	Summit Drilling Ltd.	Lot:			
Author:	Joerg Kleinboeck	Start date:	5/15/2017	Description date:	5/26/2017
		End date:	5/16/2017		

Collar

Azimuth: 40.00°
 Dip: -45.00°
 Length: 70.00

System 1

East	365957
North	5120420
Elevation	250

Down hole survey

Type	Depth	Azimuth	Dip	Invalid

Type	Depth	Azimuth	Dip	Invalid

Number of samples: 0
 Number of QAQC samples: 0
 Total sampled length: 0.00

Description:

Core size: BQTK

Cemented: No

Stored: Yes

Darien Aggregates Inc.

Description

0.00	20.40	Gr; cg; mass Granite; coarse grained; massive casing driven to 0.5m. pink coarse grained massive granite with minor mafic dyke and xenoliths <10cm in width/size. lower contact sharp @ 70 deg TCA.
20.40	21.94	QV Quartz Vein 70° white quartz vein with minor granitic and chloritized mafic fragments. no visible sulphides.
21.94	70.00	NDIA; mg; mass Nipissing Diabase; medium grained; massive grey medium grained massive gabbro with occasional very coarse to pegmatitic sections up to 20cm in width. non-magnetic to moderately magnetitic - patches of 0.5-1% magnetite throughout.
21.94	70.00	Mt00.1 Magnetite 0.1% trace interstitial magnetite, locally up to 1%.
26.30	26.50	FRC Fractured heavily fractured, RQD=0%
27.00	27.65	FRC Fractured heavily fractured, RQD=0%
30.00	30.30	FRC Fractured heavily fractured, RQD=0%
30.80	31.30	FRC Fractured heavily fractured, RQD=0%

Darien Aggregates Inc.

DDH:	DA17-16	Claims title:	3009531	Section:	
		Township:	Long	Level:	Surface
		Range:		Work place:	Algoma Mills, ON
Contractor:	Summit Drilling Ltd.	Lot:			
Author:	Joerg Kleinboeck	Start date:	5/17/2017	Description date:	5/31/2017
		End date:	5/24/2017		

Collar

Azimuth: 0.00°
 Dip: -90.00°
 Length: 50.00

System 1

East	365957
North	5120420
Elevation	250

Down hole survey

Type	Depth	Azimuth	Dip	Invalid

Type	Depth	Azimuth	Dip	Invalid

Number of samples: 0
 Number of QAQC samples: 0
 Total sampled length: 0.00

Description:

Core size: BQTK

Cemented: No

Stored: Yes

Darien Aggregates Inc.

Description

0.00	13.35	Gr; mg; mass Granite; medium grained; massive casing driven to 0.5m. pink coarse grained massive granite. lower contact heavily fractured and broken.
11.10	13.35	FRC Fractured heavily fractured, RQD=20%
13.35	21.88	MD; POR Mafic Dyke; Porphyritic dark grey to green fine grained porphyritic mafic dyke. Feldspar phenocrysts comprise 5% of the core, generally <4mm in size. 40 cm seam at 21.00 to 21.40m. lower contact sharp/wavy @ 70 deg TCA.
17.40	21.88	FRC Fractured moderately fractured with strong hematite+calcite fracture filling.
21.88	23.05	QV Quartz Vein 70° milky white quartz vein @ 70 deg TCA.
23.05	28.32	NDIA; fg-mg Nipissing Diabase; fine to medium grained dark grey fine to medium grained gabbro. lower contact sharp @ 20 deg TCA.
28.32	46.13	MD; fg; POR Mafic Dyke 20°; fine grained; Porphyritic as from 13.35 to 21.88m. lower contact sharp @ 20 deg TCA.
46.13	50.00	mg; mass; NDIA medium grained; massive; Nipissing Diabase dark grey medium grained massive gabbro. non-magnetic.

Darien Aggregates Inc.

DDH:	DA17-17	Claims title:	3009531	Section:	
		Township:	Long	Level:	Surface
		Range:		Work place:	Algoma Mills, ON
Contractor:	Summit Drilling Ltd.	Lot:			
Author:	Joerg Kleinboeck	Start date:	5/24/2017	Description date:	6/1/2017
		End date:	5/27/2017		

Collar

Azimuth: 40.00°
 Dip: -45.00°
 Length: 56.50

System 1

East	365877
North	5120501
Elevation	248

Down hole survey

Type	Depth	Azimuth	Dip	Invalid

Type	Depth	Azimuth	Dip	Invalid

Number of samples: 0
 Number of QAQC samples: 0
 Total sampled length: 0.00

Description:

Core size: BQTK

Cemented: No

Stored: Yes

Darien Aggregates Inc.

Description

0.00	28.40	Gr; mg-cg; mass Granite; medium to coarse grained; massive casing driven to 0.5m. pink medium to coarse grained massive to weakly foliated granite. lower contact broken.
0.00	1.00	FRC Fractured heavily fractured, RQD=0%.
13.70	14.60	FRC Fractured heavily fractured, RQD=5%
26.00	28.40	FRC Fractured heavily fractured, RQD=5%. includes 30cm seam from 27.10 to 27.40m.
28.40	31.40	NDIA; fg-mg; mass Nipissing Diabase; fine to medium grained; massive dark grey fine to medium grained massive gabbro. non-magnetic, generally unmineralized. lower contact transitional over 10 to 20cm.
31.40	56.50	NDIA; mg; mass Nipissing Diabase; medium grained; massive dark grey medium grained massive gabbro/gabbronorite. local coarse grained to pegmatitic sections, generally <10cm in length. non-magnetic, generally unmineralized.

Darien Aggregates Inc.

DDH:	DA17-18	Claims title:	3009531	Section:	
		Township:	Long	Level:	Surface
		Range:		Work place:	Algoma Mills, ON
Contractor:	Summit Drilling Ltd.	Lot:			
Author:	Joerg Kleinboeck	Start date:	5/28/2017	Description date:	6/1/2017
		End date:	5/28/2017		

Collar

Azimuth: 40.00°
 Dip: -65.00°
 Length: 50.50

System 1

East	365877
North	5120501
Elevation	248

Down hole survey

Type	Depth	Azimuth	Dip	Invalid

Type	Depth	Azimuth	Dip	Invalid

Number of samples: 0
 Number of QAQC samples: 0
 Total sampled length: 0.00

Description:

Core size: BQTK

Cemented: No

Stored: Yes

Darien Aggregates Inc.

Description		
0.00	26.40	Gr; cg; mass Granite; coarse grained; massive casing driven to 0.5m. pink coarse grained massive to foliated granite. non-magnetic, unmineralized.
7.90	10.00	FRC Fractured heavily fractured, RQD=10%.
12.60	13.00	FRC Fractured heavily fractured, RQD=0%.
25.00	26.40	FRC Fractured heavily fractured, RQD=0%. Includes 30cm seam from 26.10 to 25.40m.
26.40	50.50	NDIA; mg Nipissing Diabase; medium grained dark grey to green medium grained massive gabbro/gabbronorite. upper contact chilled over 1.5m. non-magnetic to weakly magnetic. generally unmineralized.
42.05	42.57	KSpAr Potassic strong pervasive kspar about 1-2 cm fault @ 42.24m.
42.24	42.26	FT Fault 20° 2cm thick fault zone infilled with chlorite and calcite.

Darien Aggregates Inc.

DDH:	DA17-19	Claims title:	3009531	Section:	
		Township:	Long	Level:	Surface
		Range:		Work place:	Algoma Mills, ON
Contractor:	Summit Drilling Ltd.	Lot:			
Author:	Joerg Kleinboeck	Start date:	5/29/2017	Description date:	6/1/2017
		End date:			

Collar

Azimuth: 0.00°
 Dip: -90.00°
 Length: 51.00

System 1

East	365973
North	5120559
Elevation	250

Down hole survey

Type	Depth	Azimuth	Dip	Invalid

Type	Depth	Azimuth	Dip	Invalid

Number of samples: 0
 Number of QAQC samples: 0
 Total sampled length: 0.00

Description:

Core size: BQTK

Cemented: No

Stored: Yes

Darien Aggregates Inc.

Description

0.00	51.00	NDIA; mg; mass Nipissing Diabase; medium grained; massive casing driven to 1.5m. dark grey medium grained generally massive homogeneous gabbro to gabbronorite with occasional rare pegmatitic leucocratic sections 10-20cm in width. weakly magnetic.
0.00	51.00	FRC Fractured 5-6 per m, preferentially orientated @ 55, 70 deg TCA.
0.00	51.00	Py00.1 Pyrite 0.1% trace disseminated pyrite, generally unmineralized.

Darien Aggregates Inc.

DDH:	DA17-20	Claims title:	3009531	Section:	
		Township:	Long	Level:	Surface
		Range:		Work place:	Algoma Mills, ON
Contractor:	Summit Drilling Ltd.	Lot:			
Author:	Joerg Kleinboeck	Start date:	5/30/2017	Description date:	6/7/2017
		End date:	6/3/2017		

Collar

Azimuth: 40.00°
 Dip: -90.00°
 Length: 51.50

System 1

East	366053
North	5120425
Elevation	249

Down hole survey

Type	Depth	Azimuth	Dip	Invalid

Type	Depth	Azimuth	Dip	Invalid

Number of samples: 0
 Number of QAQC samples: 0
 Total sampled length: 0.00

Description:

Core size: BQTK

Cemented: No

Stored: Yes

Darien Aggregates Inc.

Description

0.00	51.50	<p>NDIA; mg; mass</p> <p>Nipissing Diabase; medium grained; massive grey medium grained massive gabbro to gabbronorite. generally homogeneous except for minor pegmatitic sections. moderately to locally strongly magnetic throughout.</p>
0.00	51.50	<p>Py00.1</p> <p>Pyrite 0.1% trace specks of pyrite throughout, generally unmineralized. 0.5% to 1% interstitial magnetite throughout.</p>
25.80	30.40	<p>KSpar</p> <p>Potassic moderate pervasive kspar about chlorite+calcite filled fracture zone.</p>
25.92	26.15	<p>FRC</p> <p>Fractured heavily fractured, RQD=0%</p>
26.81	28.70	<p>FRC</p> <p>Fractured heavily fractured, partially rehealed with chlorite & calcite. RQD=25%</p>
29.83	31.15	<p>FRC</p> <p>Fractured fractured and rehealed with chlorite 1-2mm thick. fractures generally orientated at 15-20 deg TCA.</p>

Darien Aggregates Inc.

DDH: DA17-21	Claims title:	Section:
Contractor:	Township:	Level:
Author:	Range:	Work place:
	Lot:	
	Start date:	Description date:
	End date:	

Collar

Azimuth: 40.00° Dip: -45.00° Length: 61.00	System 1 <table border="1" style="margin-left: auto; margin-right: auto;"> <tr> <td style="padding: 2px;">East</td> <td style="padding: 2px;">366083</td> </tr> <tr> <td style="padding: 2px;">North</td> <td style="padding: 2px;">5120318</td> </tr> <tr> <td style="padding: 2px;">Elevation</td> <td style="padding: 2px;">249</td> </tr> </table>	East	366083	North	5120318	Elevation	249
East	366083						
North	5120318						
Elevation	249						

Down hole survey

Type	Depth	Azimuth	Dip	Invalid		Type	Depth	Azimuth	Dip	Invalid

Number of samples:	0
Number of QAQC samples:	0
Total sampled length:	0.00

Description:

Core size:	Cemented:	Stored:
------------	-----------	---------

Darien Aggregates Inc.

Description

0.00	36.25	Gr; mg-cg Granite; medium to coarse grained pink to grey massived to foliated granite/granite gneiss. non-magnetic. lower contact sharp @ 75 deg TCA.
0.00	36.25	Epi Epidote occasional epidote veinlets up to 12mm in width.
0.00	36.25	Py00.1 Pyrite 0.1% trace disseminated specks of pyrite, generally unmineralized.
36.25	61.00	NDIA; mg; mass Nipissing Diabase; medium grained; massive dark grey to green medium grained massive homogeneous gabbro/gabbronorite. upper contact chilled over 1.5-2.0m - fine grained. locally weakly magnetic.
36.25	36.50	QV Quartz Vein irregular ribboned quartz veinlets <1cm in width near upper contact.
36.25	61.00	Py00.1 Pyrite 0.1% trace finely disseminated specks of pyrite, generally unmineralized.
50.64	50.68	MD; vfg; POR Mafic Dyke 70°; very fine grained ; Porphyritic dark grey to black very fined grained porphyritic mafic dyke. contains 5% feldspar phenocrysts up to several mm's in size.

Darien Aggregates Inc.

DDH:	DA17-22	Claims title:	3009531	Section:	
		Township:	Long	Level:	Surface
		Range:		Work place:	Algoma Mills, ON
Contractor:	Summit Drilling Ltd.	Lot:			
Author:	Joerg Kleinboeck	Start date:	6/5/2017	Description date:	6/14/2017
		End date:	6/8/2017		

Collar

Azimuth: 40.00°
 Dip: -60.00°
 Length: 60.00

System 1

East	366083
North	5120318
Elevation	249

Down hole survey

Type	Depth	Azimuth	Dip	Invalid

Type	Depth	Azimuth	Dip	Invalid

Number of samples: 0
 Number of QAQC samples: 0
 Total sampled length: 0.00

Description:

Core size: BQTK

Cemented: No

Stored: Yes

Darren Aggregates Inc.

Description

0.00	42.00	<p>Gr; cg Granite; coarse grained casing driven to 1.5m. pink coarse grained massive to foliated granite. generally unmineralized. non-magnetic. lower contact sharp but irregular @ 25 deg TCA, marked by 1cm quartz vein.</p>
0.00	42.00	<p>Epi Epidote weak epidote veining throughout. 34.50-42.00m - weak to moderate quartz veining <1cm in width, orientated at various angles TCA.</p>
42.00	60.00	<p>NDIA; mg; mass Nipissing Diabase; medium grained; massive dark grey medium grained massive gabbro with occasional felsic dykes up to 70cm in width (not inclusions as there are fragments of NDIA within the dykes). upper contact sharp but irregular, finer grained (chilled), and foliated over 25 cm.</p>
43.61	43.76	<p>FD; fg Felsic Dyke 20°; fine grained pink fine grained massive aplitic dyke. 8-10cm in thickness.</p>
44.85	45.00	<p>BC Broken Core heavily fractured, RQD=0%</p>
49.61	50.35	<p>FD; fg Felsic Dyke; fine grained pink fine to medium grained felsic dyke</p>
50.68	50.81	<p>FD; fg Felsic Dyke; fine grained pink fine to medium grained felsic dyke @ 65 deg TCA.</p>
50.81	50.94	<p>FD; fg Felsic Dyke 30°; fine grained pink fine grained felsic dyke containing a few 1-2 cm angular fragments of gabbro. upper contact sharp @ 30 deg, lower contact sharp @ 65 deg TCA.</p>

Darien Aggregates Inc.

Description

52.88	53.33	FD; fg Felsic Dyke; fine grained pink felsic dyke. upper contact sharp and irregular, lower contact sharp @ 35 deg TCA.
57.37	57.95	FD; fg Felsic Dyke; fine grained pink fine to medium grained felsic dyke. lower contact broken over 20 cm.

Darien Aggregates Inc.

DDH:	DA17-23	Claims title:	3009531	Section:	
		Township:	Long	Level:	Surface
		Range:		Work place:	Algoma Mills, ON.
Contractor:	Summit Drilling Ltd.	Lot:			
Author:	Joerg Kleinboeck	Start date:	6/8/2017	Description date:	6/15/2017
		End date:	6/9/2017		

Collar

Azimuth: 40.00°
 Dip: -85.00°
 Length: 66.00

System 1

East	366083
North	5120318
Elevation	249

Down hole survey

Type	Depth	Azimuth	Dip	Invalid

Type	Depth	Azimuth	Dip	Invalid

Number of samples: 0
 Number of QAQC samples: 0
 Total sampled length: 0.00

Description:

Core size: BQTK

Cemented: No

Stored: Yes

Darien Aggregates Inc.

Description

0.00	55.25	Gr; cg Granite; coarse grained casing driven to 1.5m. pink coarse grained massive to foliated (gneissic) granite. generally unmineralized. non-magnetic. lower contact sharp @ 70 deg TCA.
0.00	55.25	qtz; Epi Quartz; Epidote local weak quartz + epidote veinlets throughout. local quartz veins up to 8cm in width, generally low angle (20 deg TCA). 53.72-53.96m - quartz vein. upper contact irregular, approximately 20 deg TCA, lower contact at 55 deg TCA. 54.00-54.35m - quartz vein, upper contact irregular, lower contact broken.
54.00	55.25	FRC Fractured heavily fractured, RQD=0%
55.25	57.12	NDIA; fg; mass Nipissing Diabase; fine grained; massive dark grey fine grained massive gabbro. no visible sulphides. non-magnetic. lower contact sharp @ 50 deg TCA.
55.25	56.50	FRC Fractured heavily fractured, RQD=10%
57.12	59.22	Gr; cg Granite; coarse grained pink coarse grained massive to weakly foliated granite (as from 0-55.25m). non-magnetic. no visible sulphides. lower contact sharp @ 60 deg TCA.
59.22	66.00	NDIA; mg; mass Nipissing Diabase; medium grained; massive

Darien Aggregates Inc.

Description

dark grey medium grained massive gabbro/gabbronorite.

upper contact chilled over 1m.

fractures 3-6/m, geneally orientated @ 15, 25, 50, and 70 deg TCA, locally infilled with 1mm of chlorite.

generally unmineralized.

non-magnetic to locally weakly magnetic.

Darien Aggregates Inc.

DDH:	DA17-24	Claims title:	3009531	Section:	
		Township:	Long	Level:	Surface
		Range:		Work place:	Algoma Mills, ON.
Contractor:	Summit Drilling Ltd.	Lot:			
Author:	Joerg Kleinboeck	Start date:	6/10/2017	Description date:	6/15/2017
		End date:	6/10/2017		

Collar

Azimuth: 40.00°
 Dip: -45.00°
 Length: 60.00

System 1

East	366013
North	5120351
Elevation	249

Down hole survey

Type	Depth	Azimuth	Dip	Invalid

Type	Depth	Azimuth	Dip	Invalid

Number of samples: 0
 Number of QAQC samples: 0
 Total sampled length: 0.00

Description:

Core size: BQTK

Cemented: No

Stored: Yes

Darren Aggregates Inc.

Description

0.00	16.20	Gr; cg Granite; coarse grained pink coarse grained massive to foliated granite/granite gneiss. non-magnetic. no visible sulphides. lower contact sharp @ 65 deg TCA.
16.20	53.16	NDIA; mg; mass Nipissing Diabase; medium grained; massive dark grey medium grained massive gabbro/gabbronorite. moderately fractured, 5-10/m at various angles TCA. generally non-magnetic. lower contact sharp @ 20 deg TCA.
16.20	43.00	Chl; Hem; KSp Chlorite; Hematite; Potassic weak pervasive ksp and chlorite throughout, occasional calcite+hematite filled fractures and veinlets 1-10mm in thickness (drill hole proximal to a structure?).
16.20	53.16	Py00.1 Pyrite 0.1% trace disseminated pyrite, generally unmineralized.
38.40	40.80	FT Fault 10° low angle fault/heavily fractured zone orientated at 0-10 deg TCA. RQD=0-5% lower contact marked by 20cm thick quartz vein.
53.16	60.00	MD; fg; POR Mafic Dyke; fine grained; Porphyritic dark grey fine grained porphyritic mafic dyke. unit contains 5% felspar phenocrysts generally less than 5mm in size with local glomeroporphyritic sections. non-magnetic. no visible sulphides.

Darien Aggregates Inc.

DDH:	DA17-25	Claims title:	3009531	Section:	
		Township:	Long	Level:	Surface
		Range:		Work place:	Algoma Mills, ON.
Contractor:	Summit Drilling Ltd.	Lot:			
Author:	Joerg Kleinboeck	Start date:	6/10/2017	Description date:	6/15/2017
		End date:	6/12/2017		

Collar

Azimuth: 40.00°
 Dip: -90.00°
 Length: 69.00

System 1

East	366013
North	5120531
Elevation	249

Down hole survey

Type	Depth	Azimuth	Dip	Invalid

Type	Depth	Azimuth	Dip	Invalid

Number of samples: 0
 Number of QAQC samples: 0
 Total sampled length: 0.00

Description:

Core size: BQTK

Cemented: No

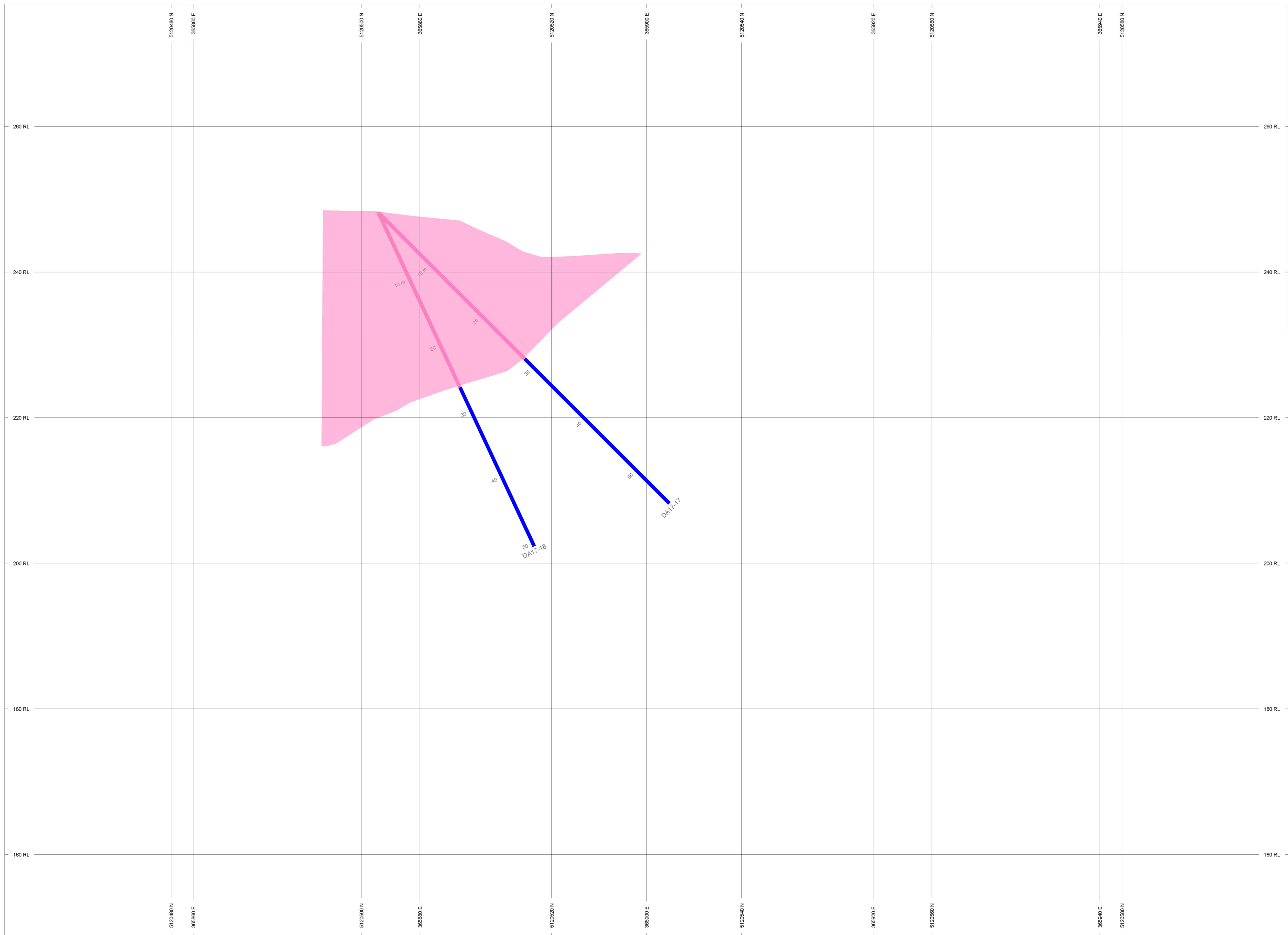
Stored: Yes

Darien Aggregates Inc.

Description

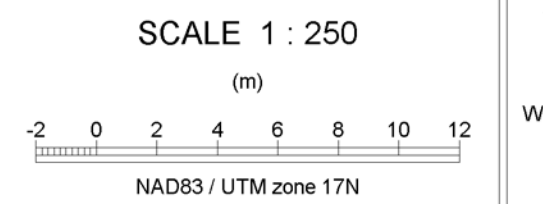
0.00	52.83	Gr; cg Granite; coarse grained casing driven to 1.5m. pink coarse grained massive to foliated granite/granite gneiss. lower contact sharp @ 25 deg TCA.
0.00	52.83	Epi Epidote occasional epidote veinlet throughout, typically <2cm in width.
52.83	55.82	NDIA; mg-cg Nipissing Diabase; medium to coarse grained grey to dark grey altered mafic dyke/nipissing gabbro. non-magnetic. no visible sulphides. lower contact sharp @ 35 deg TCA.
55.82	60.57	Gr; mg-cg Granite; medium to coarse grained pink medium to coarse grained, massive to weakly foliated granite. lower contact sharp but broken.
59.00	60.57	FRC Fractured heavily fractured, RQD=5%
60.57	69.00	NDIA; mg; mass Nipissing Diabase; medium grained; massive dark grey medium grained massive gabbro/gabbronorite. no visible sulphides. weakly to moderately magnetic. fractures 6-8/m orientated at various angles TCA.

Appendix III

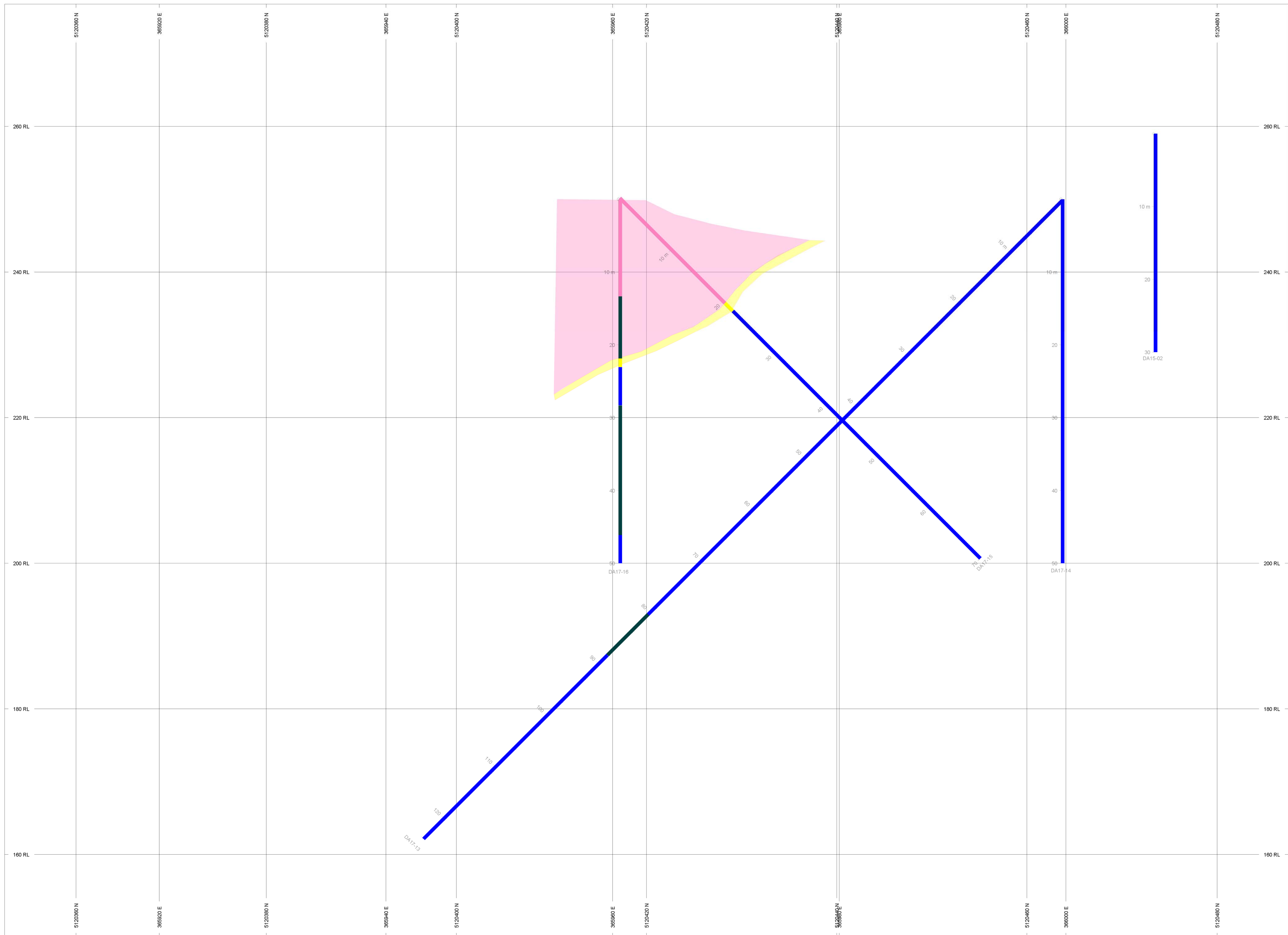


ROCK CODES	PAT	LABEL	DESCRIPTION
Litho	GR	GR	Granite
	NDIA	NDIA	Nipissing Diabase

SECTION SPECS:
 REF. PT. E, N 3959900 m 5120530 m
 EXTENTS 176.3 m 128.1 m
 SECTION TOP, BOT 276.8 m 148.7 m
 TOLERANCE +/- 14.8 m

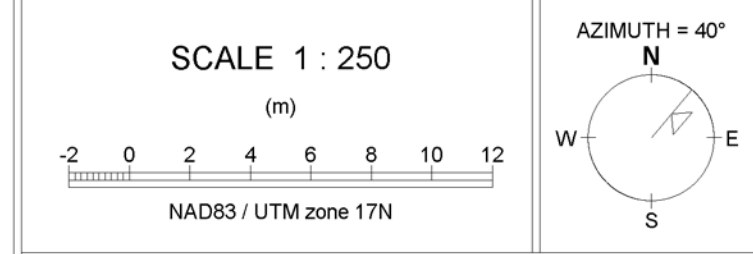


Darien Aggregates Inc.
 Nipissing Diabase Project
 Long Township, Ontario

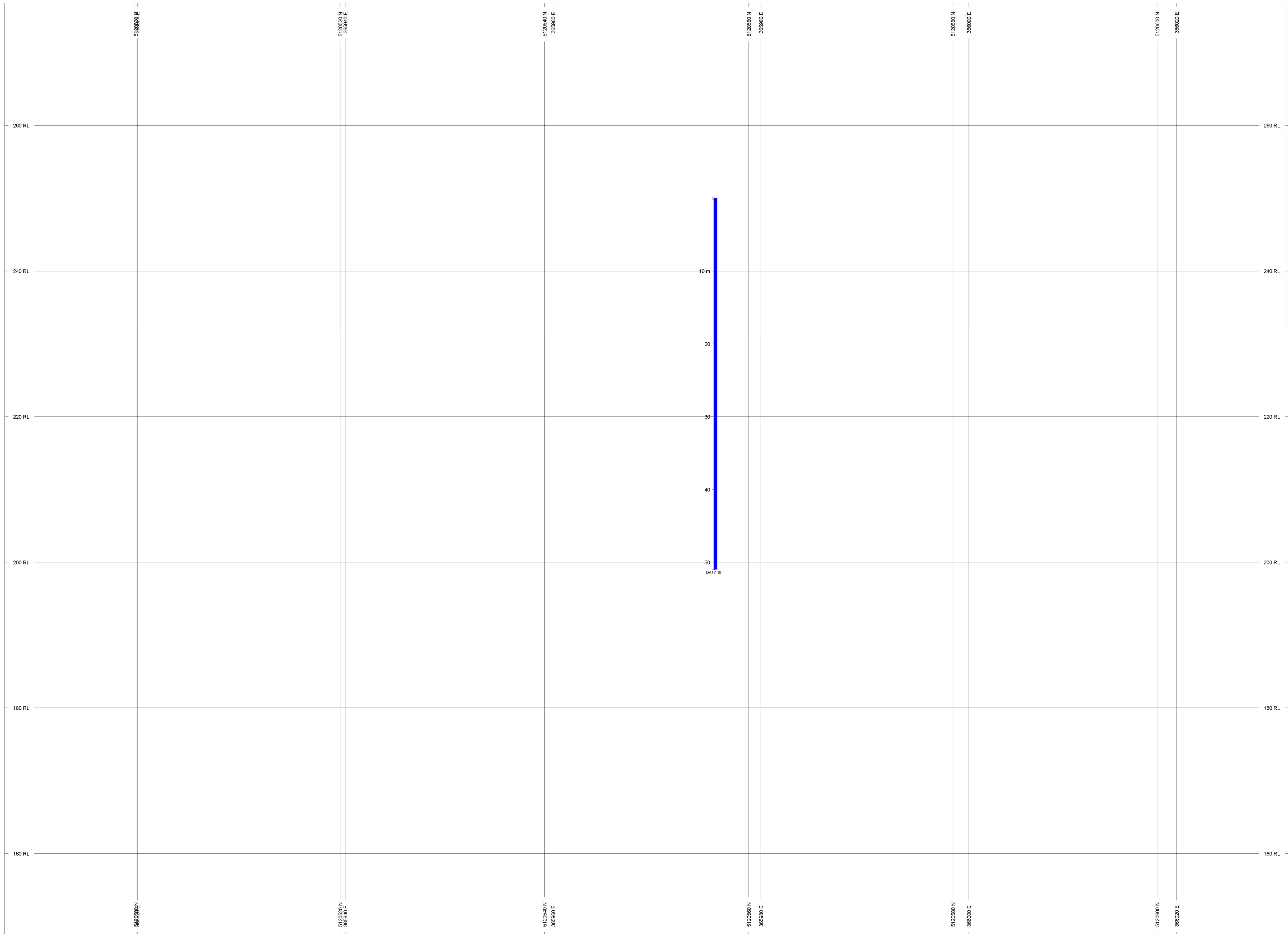


ROCK CODES	PAT	LABEL	DESCRIPTION
Litho	GR	GR	Granite
	NDIA	NDIA	Nipissing Diabase
	MD	MD	Mafic Dyke
	QV	QV	Quartzite

SECTION SPECS:
 REF. PT. E, N 365593 m 5120420 m
 EXTENTS 176.3 m 128.1 m
 SECTION TOP, BOT 276.8 m 148.7 m
 TOLERANCE +/- 12.5 m

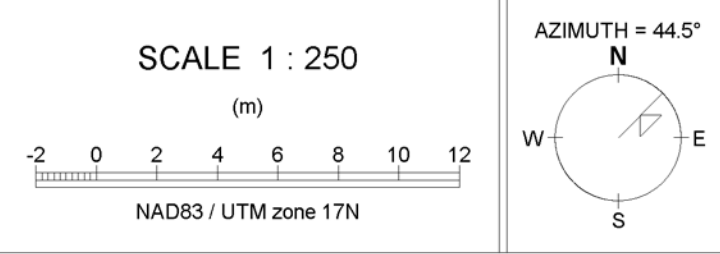


Darien Aggregates Inc.
 Nipissing Diabase Project
 Long Township, Ontario

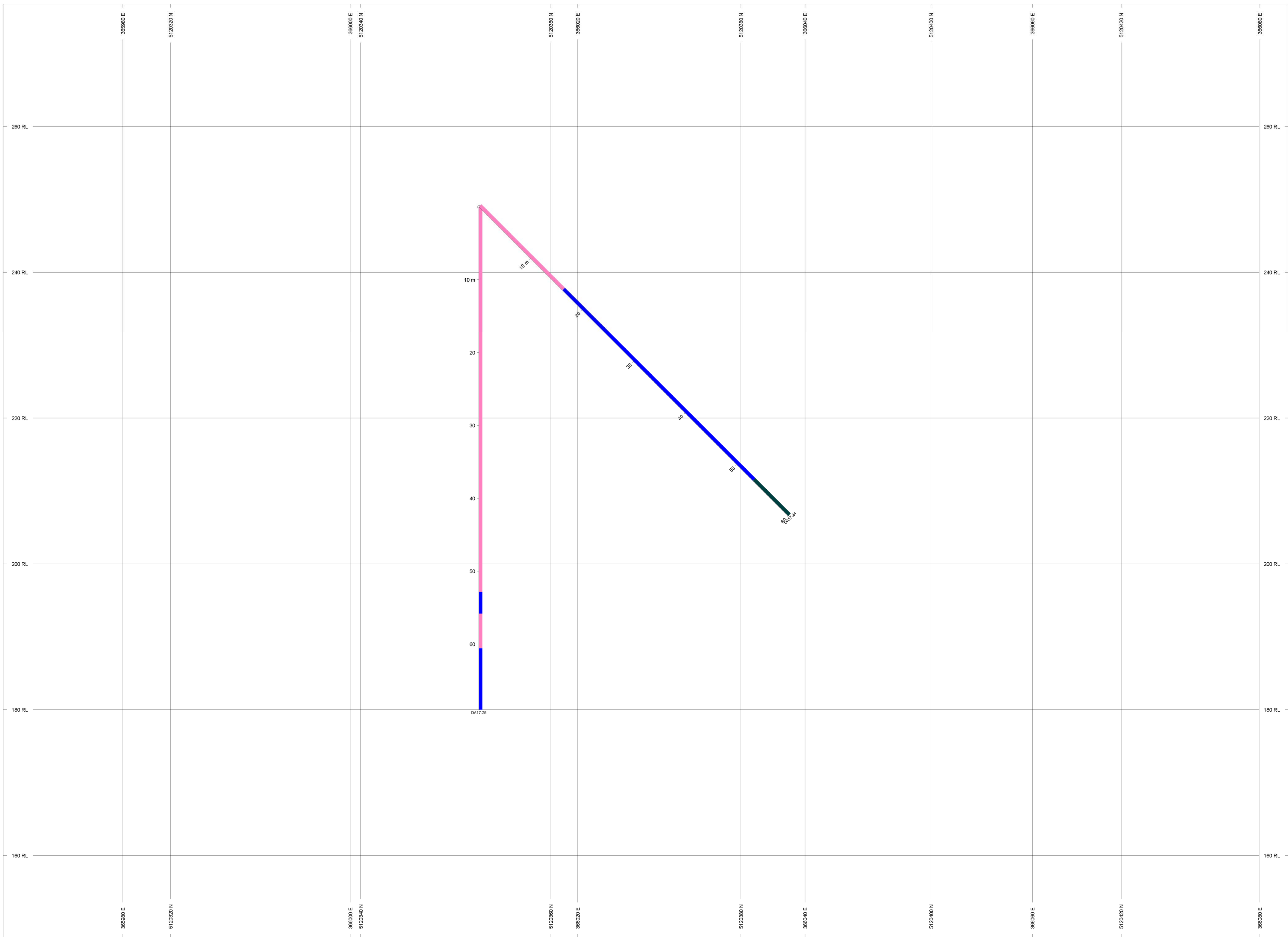


ROCK CODES	PAT	LABEL	DESCRIPTION
Litho	NDIA	NDIA	Nipissing Diabase

SECTION SPECS:
 REF. PT. E, N 3655969 m 5120550 m
 EXTENTS 176.3 m 128.1 m
 SECTION TOP, BOT 276.8 m 148.7 m
 TOLERANCE +/- 8.85 m

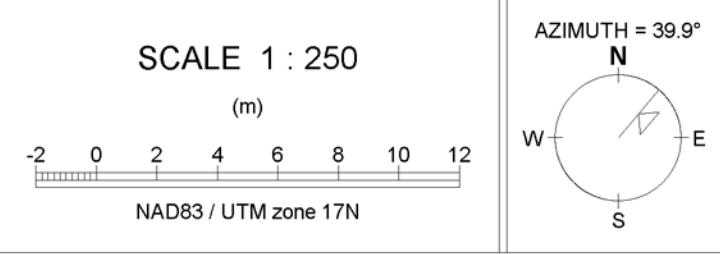


Darien Aggregates Inc.
 Nipissing Diabase Project
 Long Township, Ontario

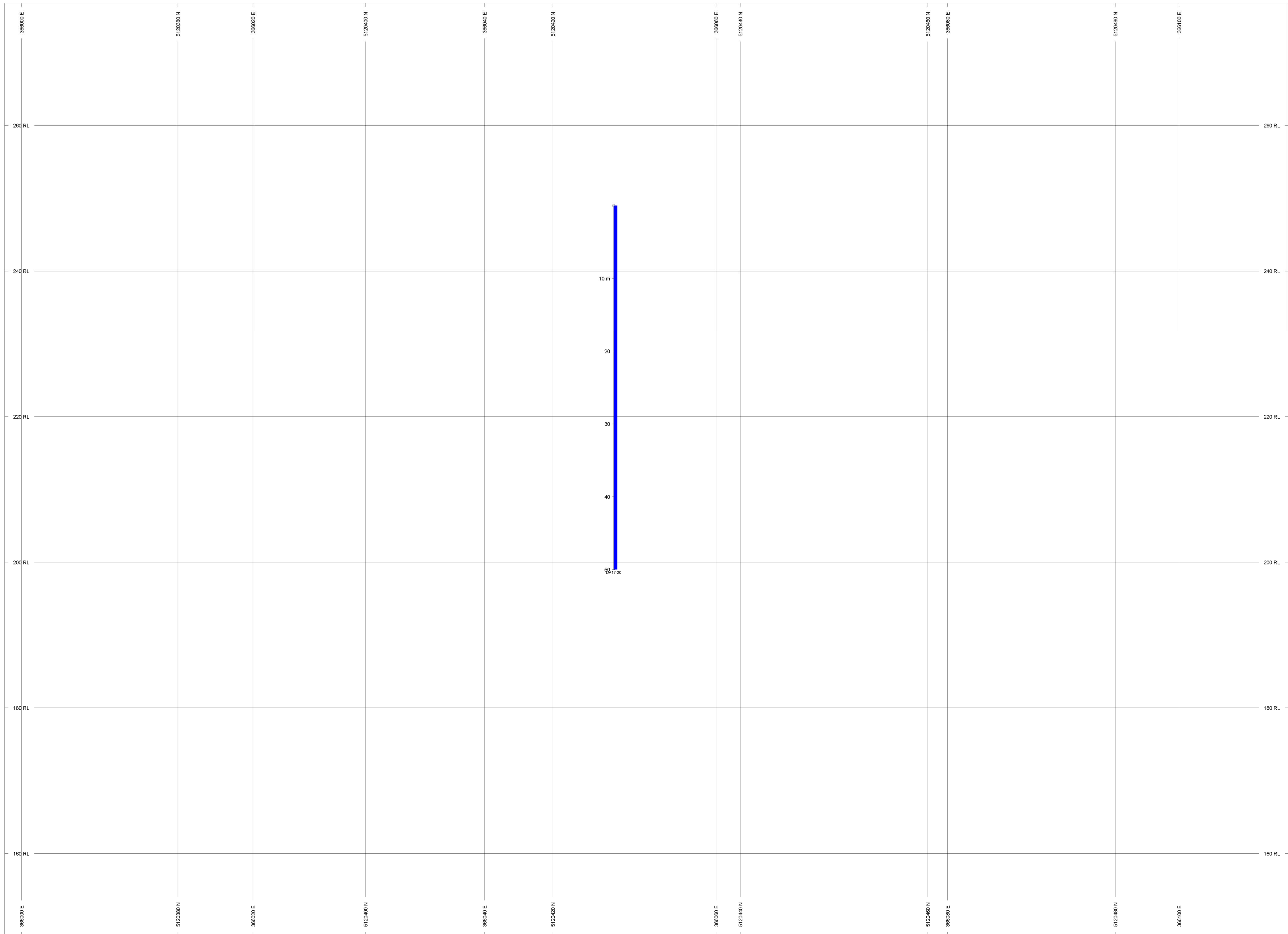


ROCK CODES	PAT	LABEL	DESCRIPTION
Litho	SR	GR	Granite
	NDIA	MD	Nipissing Diabase
	MD	MD	Mafic Dyke

SECTION SPECS:
 REF. PT. E, N 396026 m 5120370 m
 EXTENTS 176.3 m 128.1 m
 SECTION TOP, BOT 278.8 m 148.7 m
 TOLERANCE +/- 6.8 m

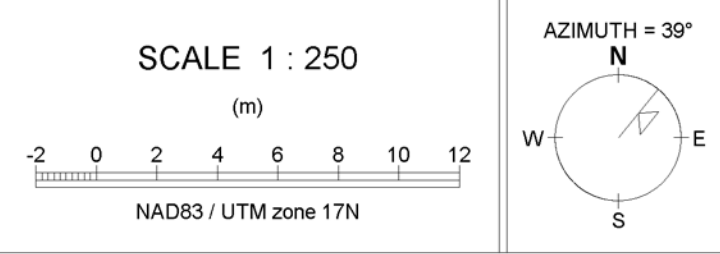


Darien Aggregates Inc.
 Nipissing Diabase Project
 Long Township, Ontario

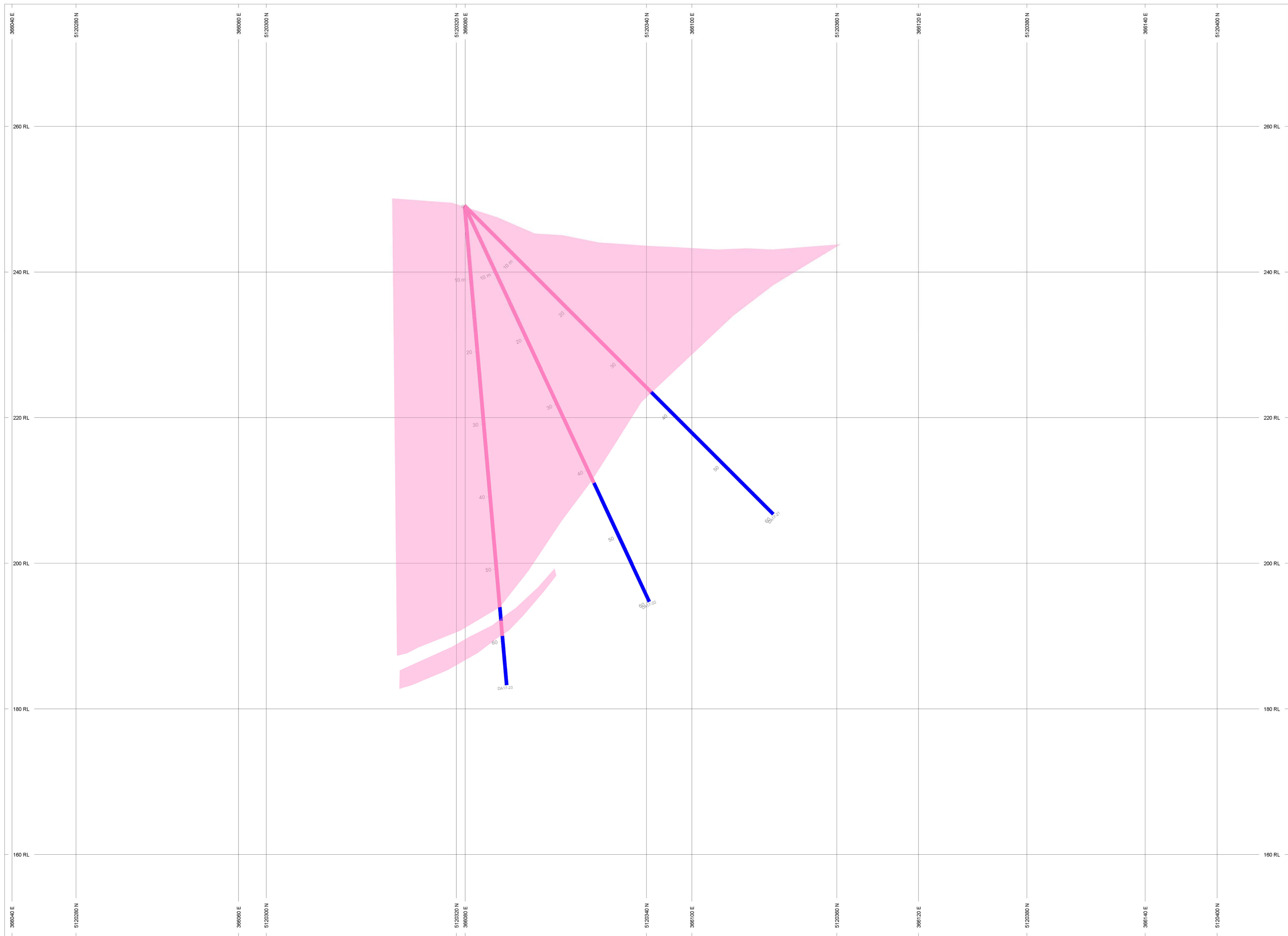


ROCK CODES	PAT	LABEL	DESCRIPTION
Litho	NDIA	NDIA	Nipissing Diabase

SECTION SPECS:
 REF. PT. E, N 396004 m 5120430 m
 EXTENTS 176.3 m 128.1 m
 SECTION TOP, BOT 276.8 m 148.7 m
 TOLERANCE +/- 6.7 m

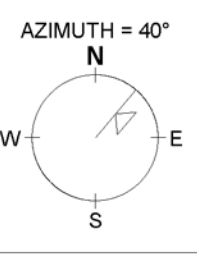
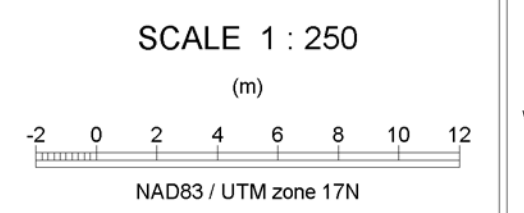


Darien Aggregates Inc.
 Nipissing Diabase Project
 Long Township, Ontario



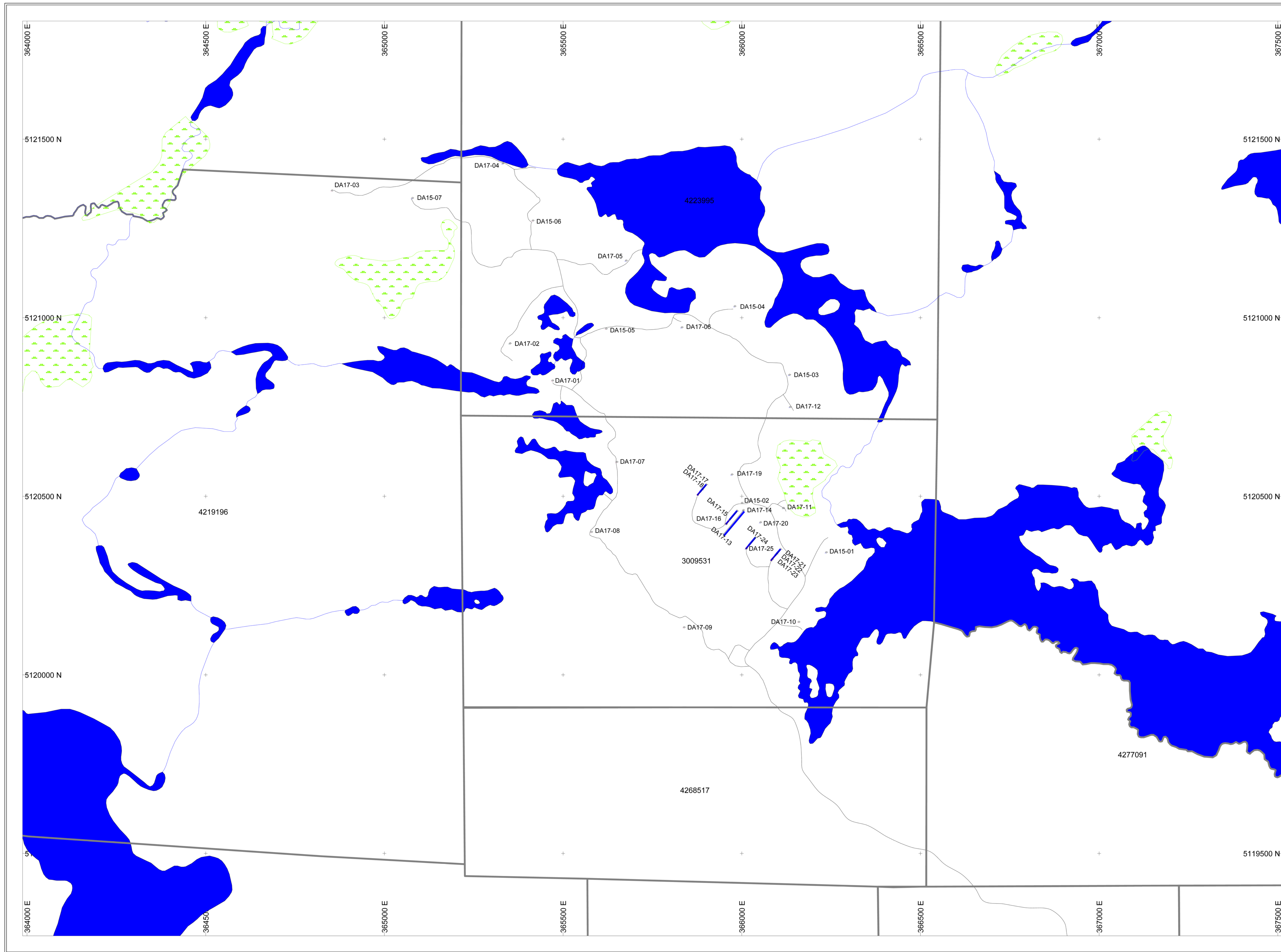
ROCK CODES	PAT	LABEL	DESCRIPTION
Litho	GR	GR	Granite
	NDIA	NDIA	Nipissing Diabase

SECTION SPECS:
 REF. PT. E, N 396096 m 5120340 m
 EXTENTS 176.3 m 128.1 m
 SECTION TOP, BOT 276.8 m 148.7 m
 TOLERANCE +/- 6.8 m



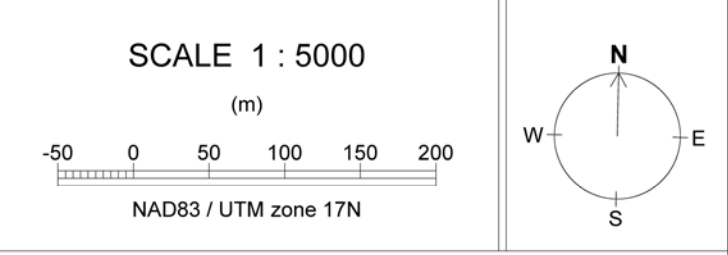
Darien Aggregates Inc.
 Nipissing Diabase Project
 Long Township, Ontario

Maps
(Back Pocket)

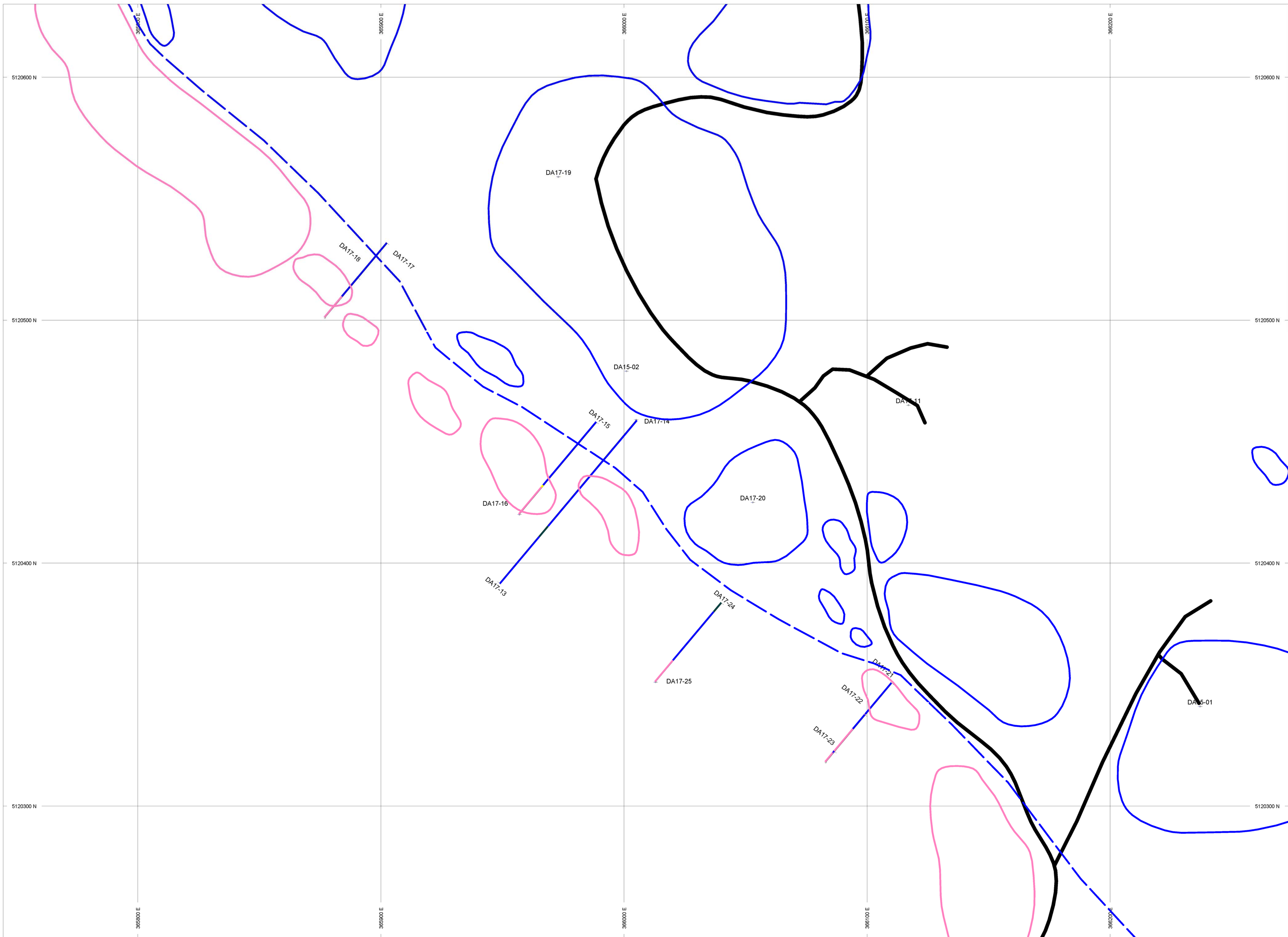


ROCK CODES	PAT	LABEL	DESCRIPTION
Litho	GR		Granite
	OB		Overburden
	FZ		Fault Zone
	NDIA		Nipissing Diabase
	MD		Mafic Dyke
	QV		

PLAN SPECS:
 REF. PT. E, N 365800 m 5121000 m
 EXTENTS 3525 m 2562 m

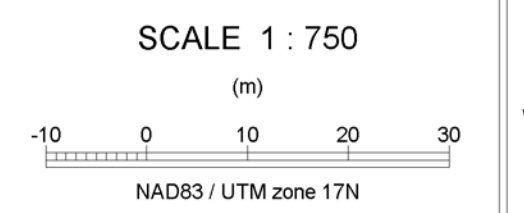


Darlen Aggregates Inc.
 Nipissing Diabase Project
 Full Plan - Traces



ROCK CODES	PAT	LABEL	DESCRIPTION
Litho		GR	Granite
		OB	Overburden
		FZ	Fault Zone
		NDIA	Nipissing Diabase
		MD	Mafic Dyke
		QV	

PLAN SPECS:
 REF. PT. E, N 366000 m 5120000 m
 EXTENTS 528.8 m 384.2 m



Darien Aggregates Inc.
 Nipissing Diabase Project
 Full Plan - Traces

