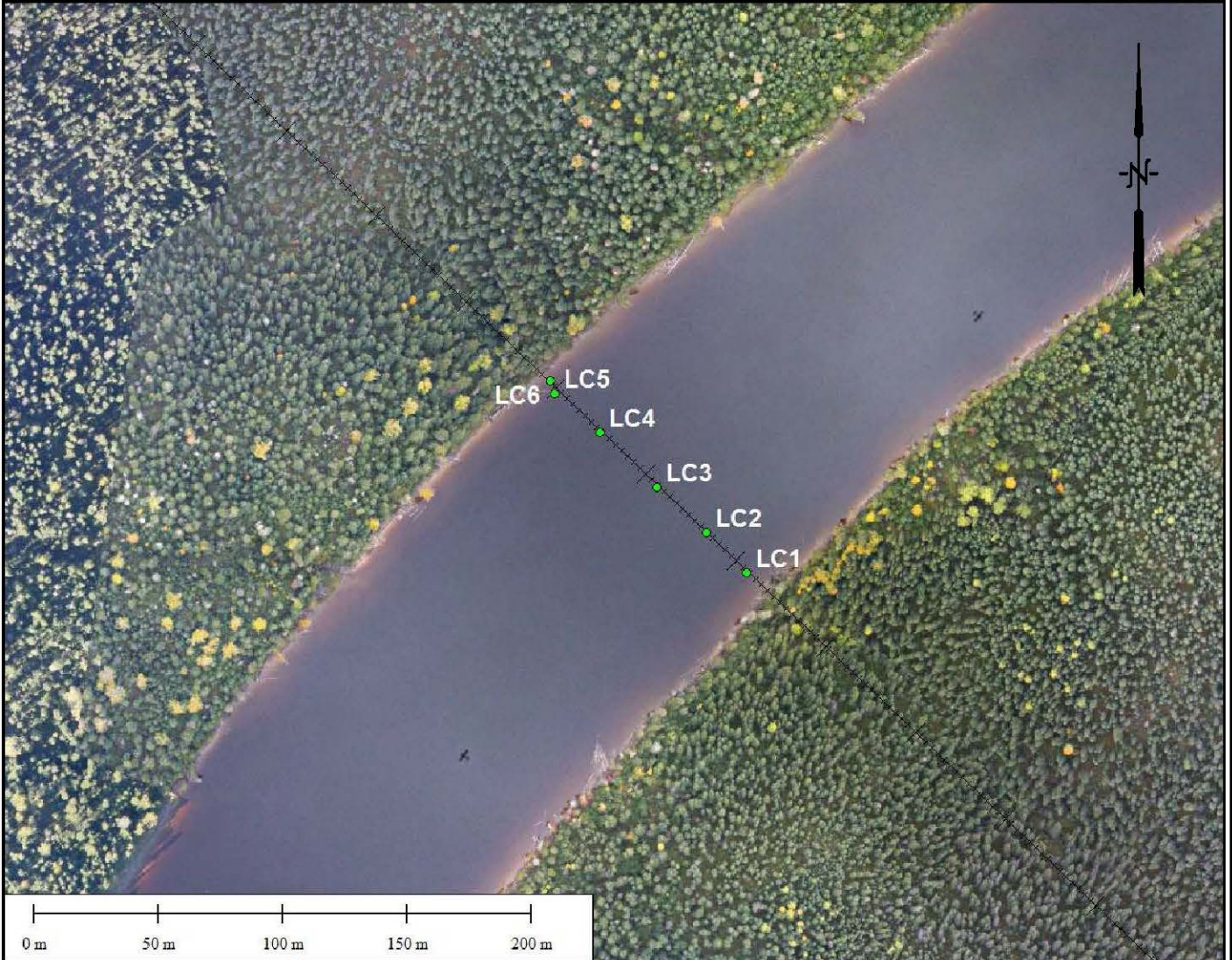


We are committed to providing [accessible customer service](#).
If you need accessible formats or communications supports, please [contact us](#).

Nous tenons à améliorer [l'accessibilité des services à la clientèle](#).
Si vous avez besoin de formats accessibles ou d'aide à la communication, veuillez [nous contacter](#).

APPENDIX G

WATER CHANNEL SOUNDINGS SURVEY



APPENDIX G-1
CHANNEL DEPTH SURVEY - LITTLE CURRENT RIVER
CANADA CHROME RAILROAD

TABLE 1
SUMMARY OF CHANNEL DEPTH SURVEY - Little Current River

Name	Identifier	Northing	Easting	Date	Distance (m)	Water Depth (m)	Total Depth (m)
Little Current	LC1	538023	5614669	4/24/2010	0.0	-1.37	-1.37
Little Current	LC2	538007	5614685	4/24/2010	22.6	-1.52	-1.52
Little Current	LC3	537987	5614703	4/24/2010	49.5	-1.83	-1.83
Little Current	LC4	537964	5614725	4/24/2010	81.4	-1.52	-1.52
Little Current	LC5	537946	5614741	4/24/2010	105.4	-1.52	-1.52
Little Current	LC6	537944	5614746	4/24/2010	110.8	-0.55	-0.55

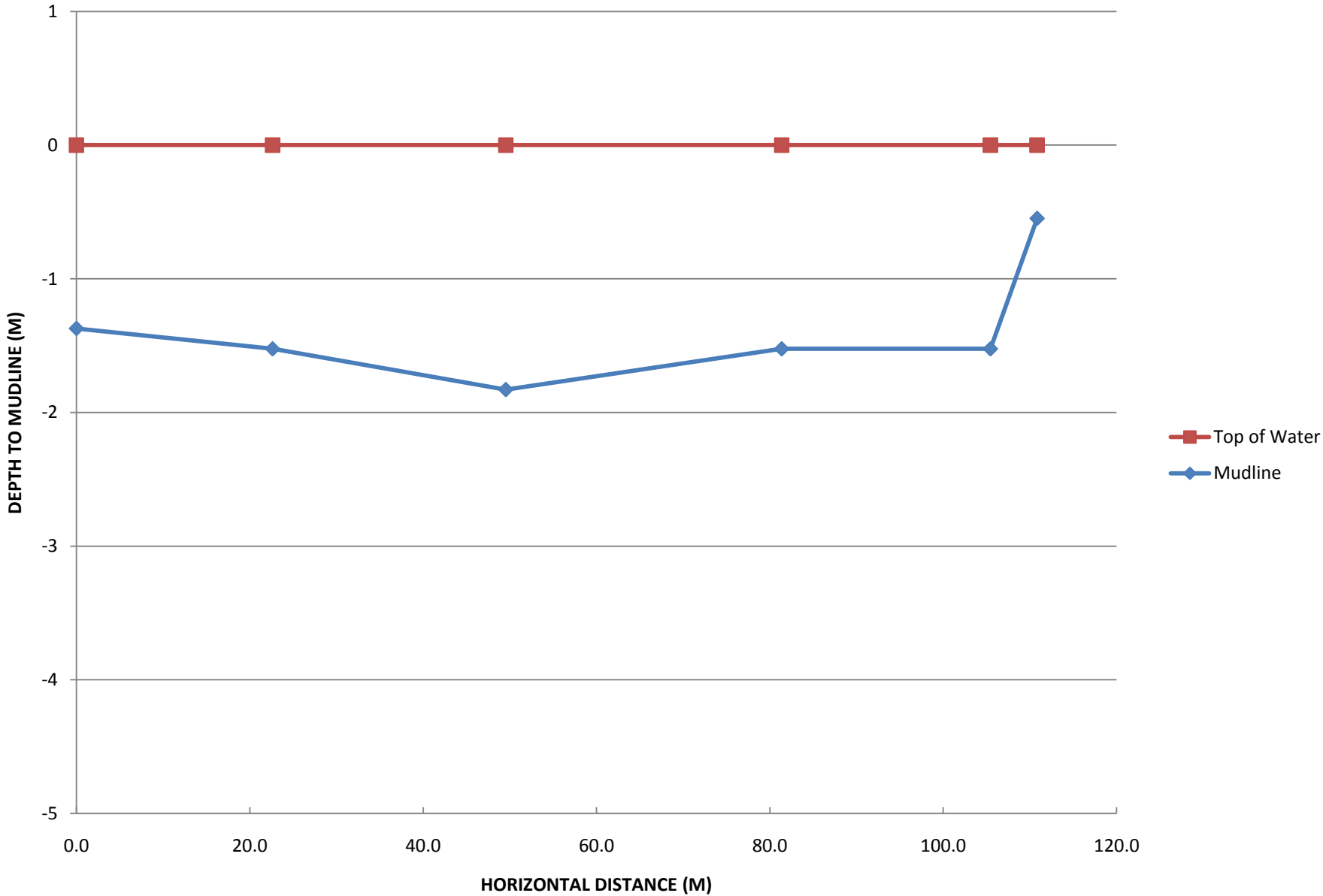
Note:

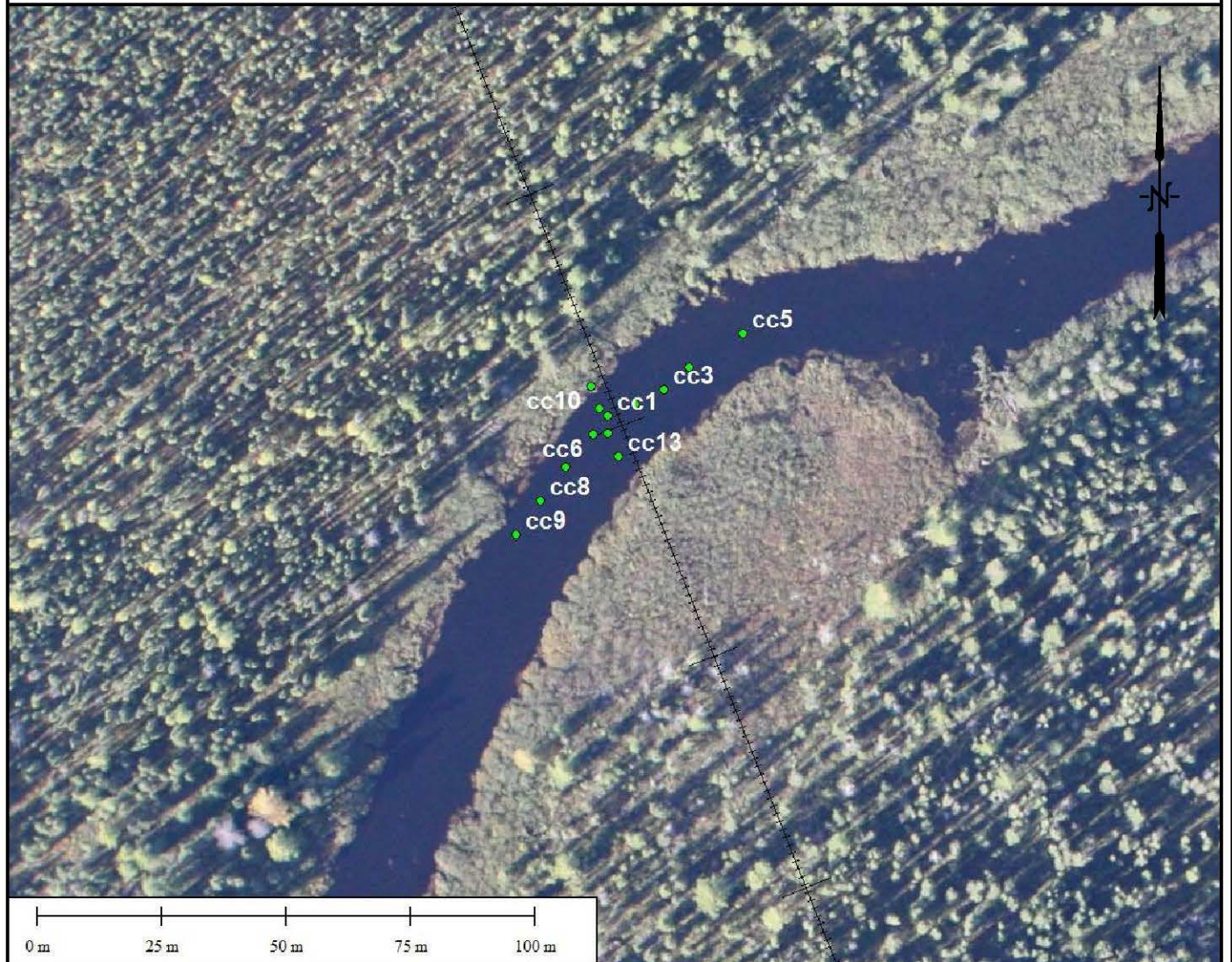
Each channel depth measurement is specified as a horizontal distance from the first point specified at LC1. Limits of survey are plotted in Appendix D.

Channel Depth Survey - Little Current River

S

N





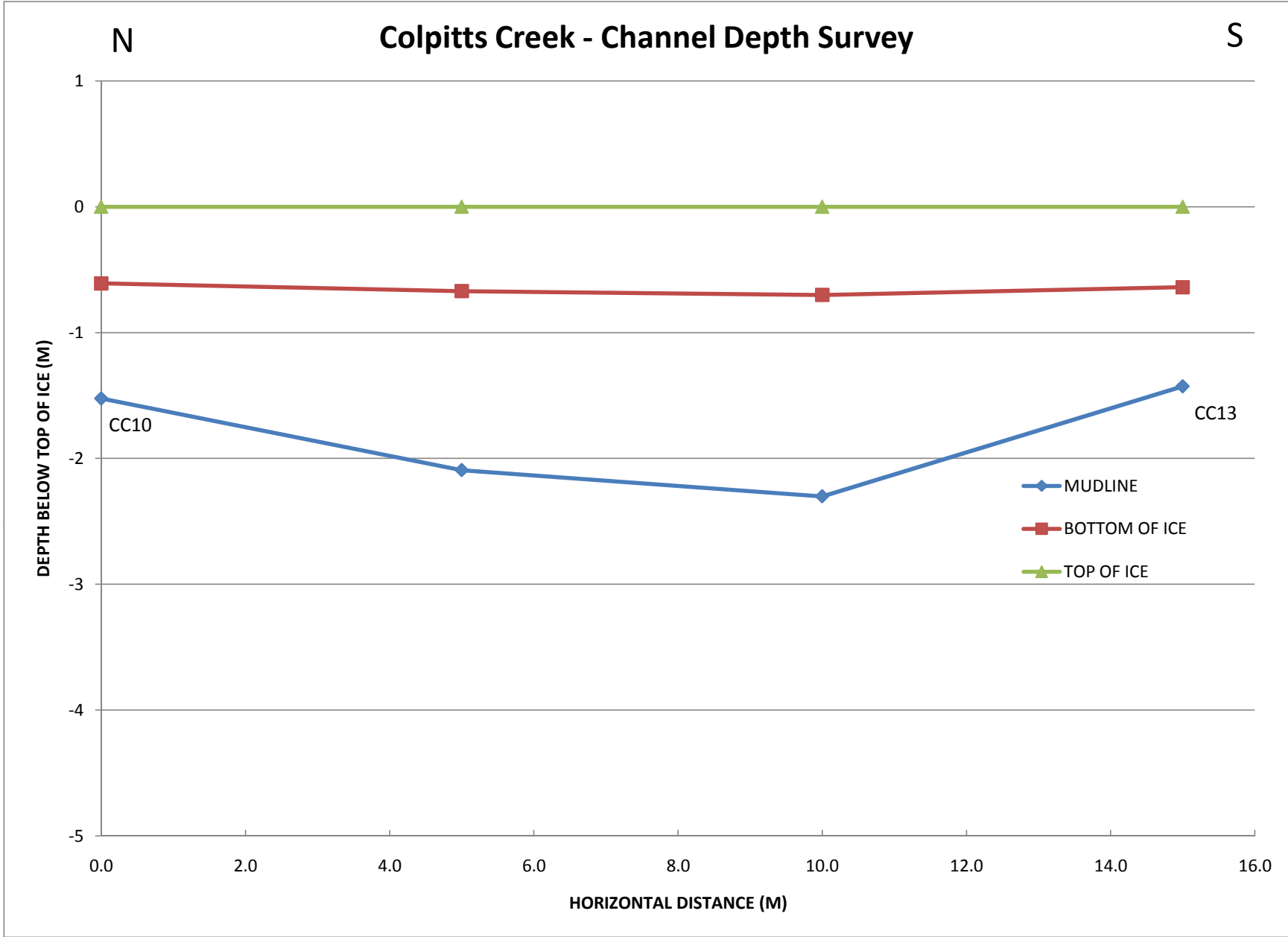
APPENDIX G-2
CHANNEL DEPTH SURVEY - COLPITTS CREEK
CANADA CHROME RAILROAD

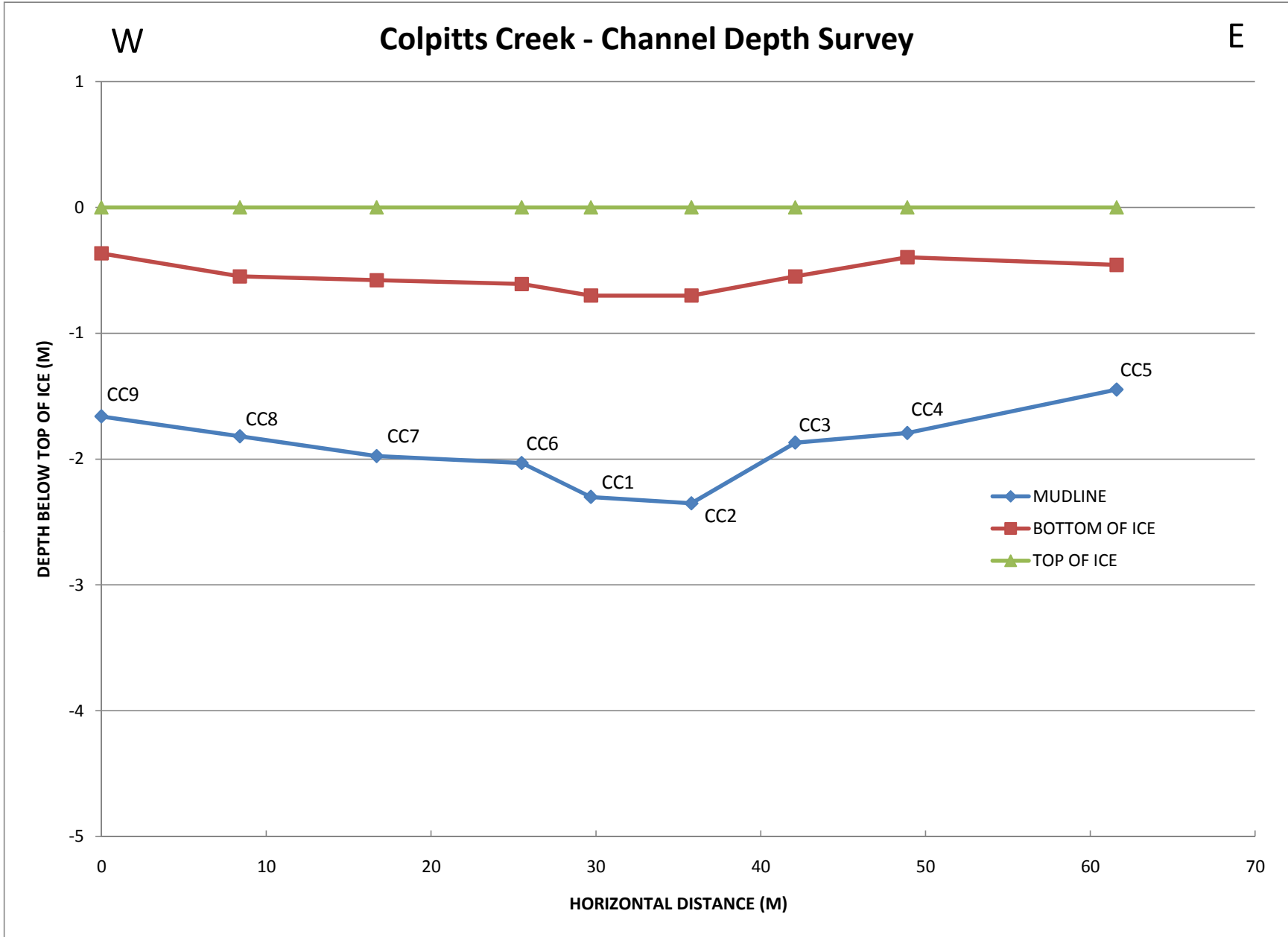
TABLE 2
CHANNEL DEPTH SURVEY - Colpits Creek

Name	Identifier	Northing	Easting	Date	Distance (m)	Water Depth (m)	Ice Thickness (m)	Total Depth (m)
Colpitts Creek (A)	cc9	534307.28	5629994.17	2/22/2010	0	-1.30	-0.37	-1.66
Colpitts Creek (A)	cc8	534312.15	5630001.02	2/22/2010	8.4	-1.27	-0.55	-1.82
Colpitts Creek (A)	cc7	534317.15	5630007.67	2/22/2010	16.7	-1.40	-0.58	-1.98
Colpitts Creek (A)	cc6	534322.81	5630014.37	2/22/2010	25.5	-1.42	-0.61	-2.03
Colpitts Creek (A)	cc1	534325.61	5630018.16	2/22/2010	29.7	-1.60	-0.70	-2.30
Colpitts Creek (A)	cc2	534331.28	5630020.45	2/22/2010	35.8	-1.65	-0.70	-2.35
Colpitts Creek (A)	cc3	534336.84	5630023.47	2/22/2010	42.1	-1.32	-0.55	-1.87
Colpitts Creek (A)	cc4	534342.07	5630027.81	2/22/2010	48.9	-1.40	-0.40	-1.79
Colpitts Creek (A)	cc5	534352.79	5630034.54	2/22/2010	61.6	-0.99	-0.46	-1.45
Colpitts Creek (B)	cc10	534322.36	5630024.05	2/23/2010	0.0	-0.91	-0.61	-1.52
Colpitts Creek (B)	cc11	534323.96	5630019.50	2/23/2010	5.0	-1.42	-0.67	-2.09
Colpitts Creek (B)	cc12	534325.73	5630014.46	2/23/2010	10.0	-1.60	-0.70	-2.30
Colpitts Creek (B)	cc13	534327.89	5630009.80	2/23/2010	15.0	-0.79	-0.64	-1.43

Note:

Each channel depth measurement is specified as a horizontal distance from the first point specified at CC9.







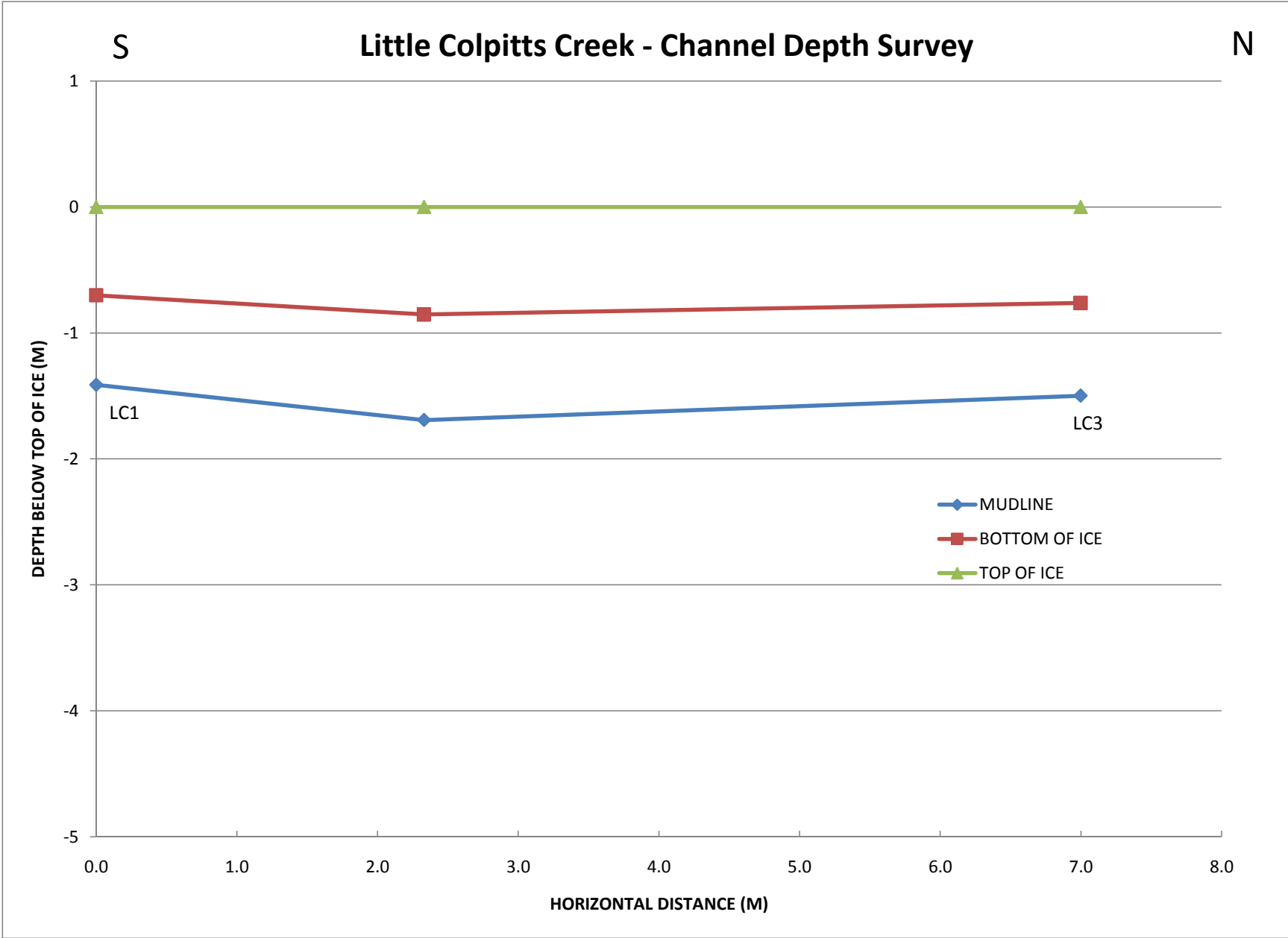
APPENDIX G-3
CHANNEL DEPTH SURVEY - LITTLE COLPITTS CREEK
CANADA CHROME RAILROAD

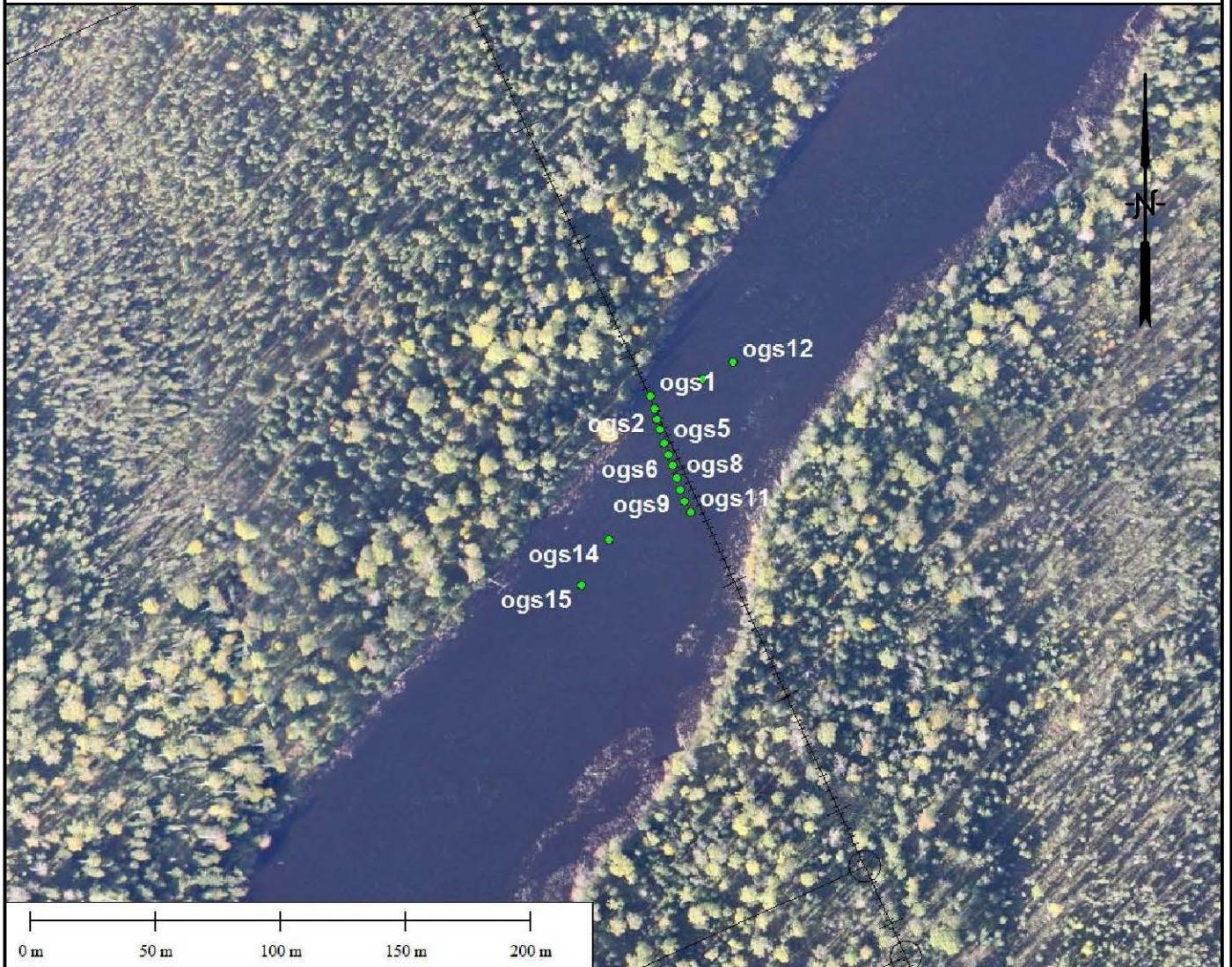
TABLE 3
SUMMARY OF CHANNEL DEPTH SURVEY - LITTLE COLPITS CREEK

Name	Identifier	Northing	Easting	Date	Total Transect Length (m)	Water Depth (m)	Ice Thickness (m)	Total Depth (m)
Little Colpitts Creek	lc1	533642.797	5632481.926	2/24/2010	0.0	-0.7	-0.7	-1.4
Little Colpitts Creek	lc2	533641.15	5632483.575	2/24/2010	2.3	-0.8	-0.9	-1.7
Little Colpitts Creek	lc3	533642.158	5632488.132	2/24/2010	7.0	-0.7	-0.8	-1.5

Note:

Each channel depth measurement is specified as a horizontal distance from the first point specified at LC1.





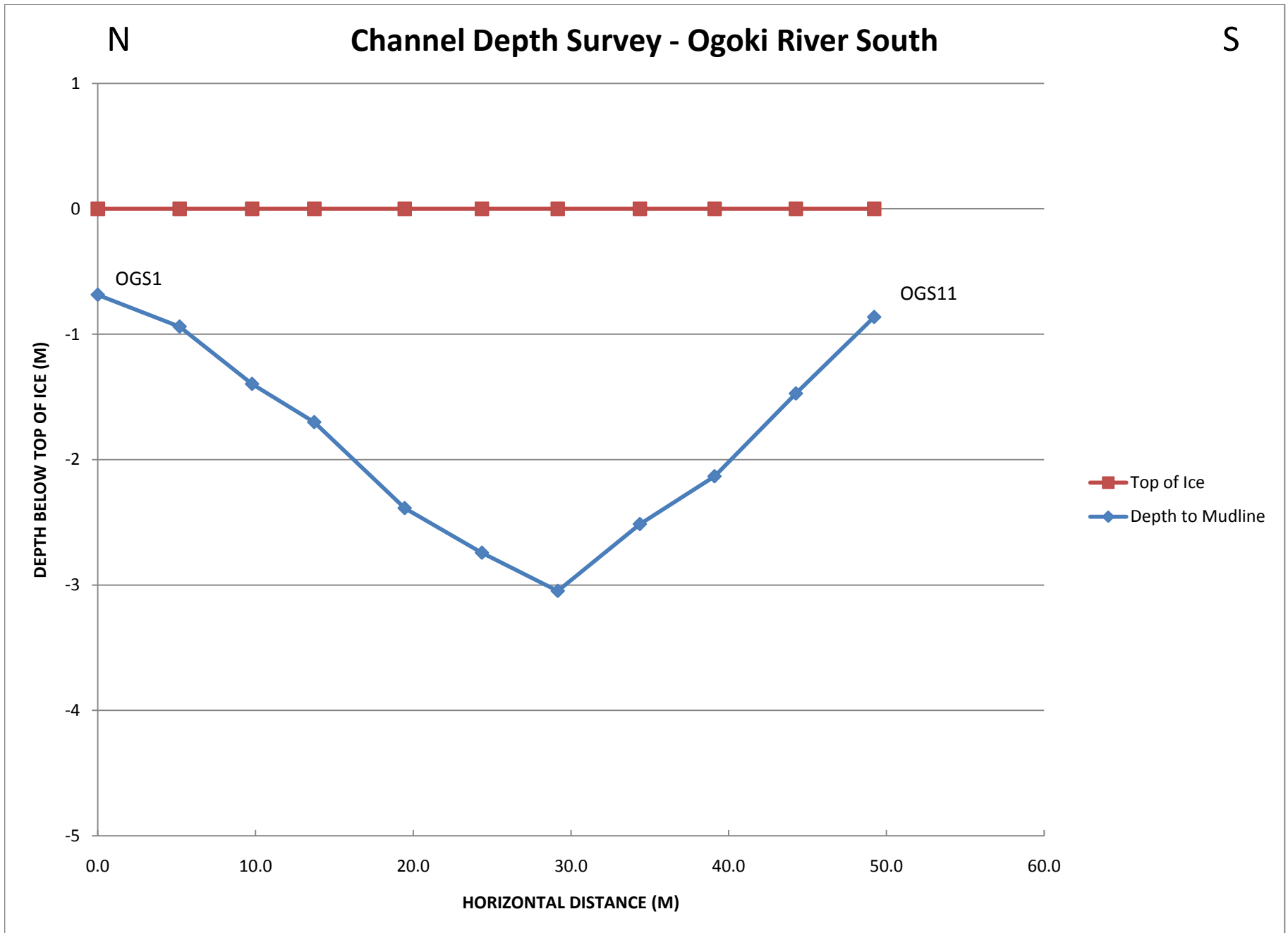
APPENDIX G-4
CHANNEL DEPTH SURVEY - SOUTH CHANNEL OF THE OGOKI RIVER
CANADA CHROME RAILROAD

TABLE 4
SUMMARY OF ICE THICKNESS SURVEY - OGOKI RIVER SOUTH

Name	Identifier	Northing	Easting	Date	Total Transect Length (m)	Water Depth (m)	Ice Thickness (m)	Total Depth (m)
Ogoki River South	ogs1	534155.142	5637979	2/25/2010	0.0	-0.69	--	-0.69
Ogoki River South	ogs2	534156.89	5637974.115	2/25/2010	5.2	-0.94	--	-0.94
Ogoki River South	ogs3	534157.719	5637969.597	2/25/2010	9.8	-1.40	--	-1.40
Ogoki River South	ogs4	534159.022	5637965.876	2/25/2010	13.7	-1.70	--	-1.70
Ogoki River South	ogs5	534160.858	5637960.446	2/25/2010	19.5	-2.39	--	-2.39
Ogoki River South	ogs6	534162.657	5637955.89	2/25/2010	24.4	-2.74	--	-2.74
Ogoki River South	ogs7	534164.032	5637951.282	2/25/2010	29.2	-3.05	--	-3.05
Ogoki River South	ogs8	534165.964	5637946.449	2/25/2010	34.4	-2.51	--	-2.51
Ogoki River South	ogs9	534167.102	5637941.854	2/25/2010	39.1	-2.13	--	-2.13
Ogoki River South	ogs10	534168.92	5637937.025	2/25/2010	44.3	-1.47	--	-1.47
Ogoki River South	ogs11	534171.253	5637932.645	2/25/2010	49.2	-0.86	--	-0.86
Ogoki River South	ogs12	534188.417	5637992.725	2/26/2010	111.7	-2.01	-0.15	-2.16
Ogoki River South	ogs13	534176.216	5637985.595	2/26/2010	125.8	-1.22	-0.15	-1.37
Ogoki River South	ogs14	534138.596	5637921.833	2/26/2010	199.9	-1.37	-0.67	-2.04
Ogoki River South	ogs15	534127.979	5637903.57	2/26/2010	221.0	-0.84	-0.82	-1.66

Note:

Each channel depth measurement is specified as a horizontal distance from the first point specified at ogs1.





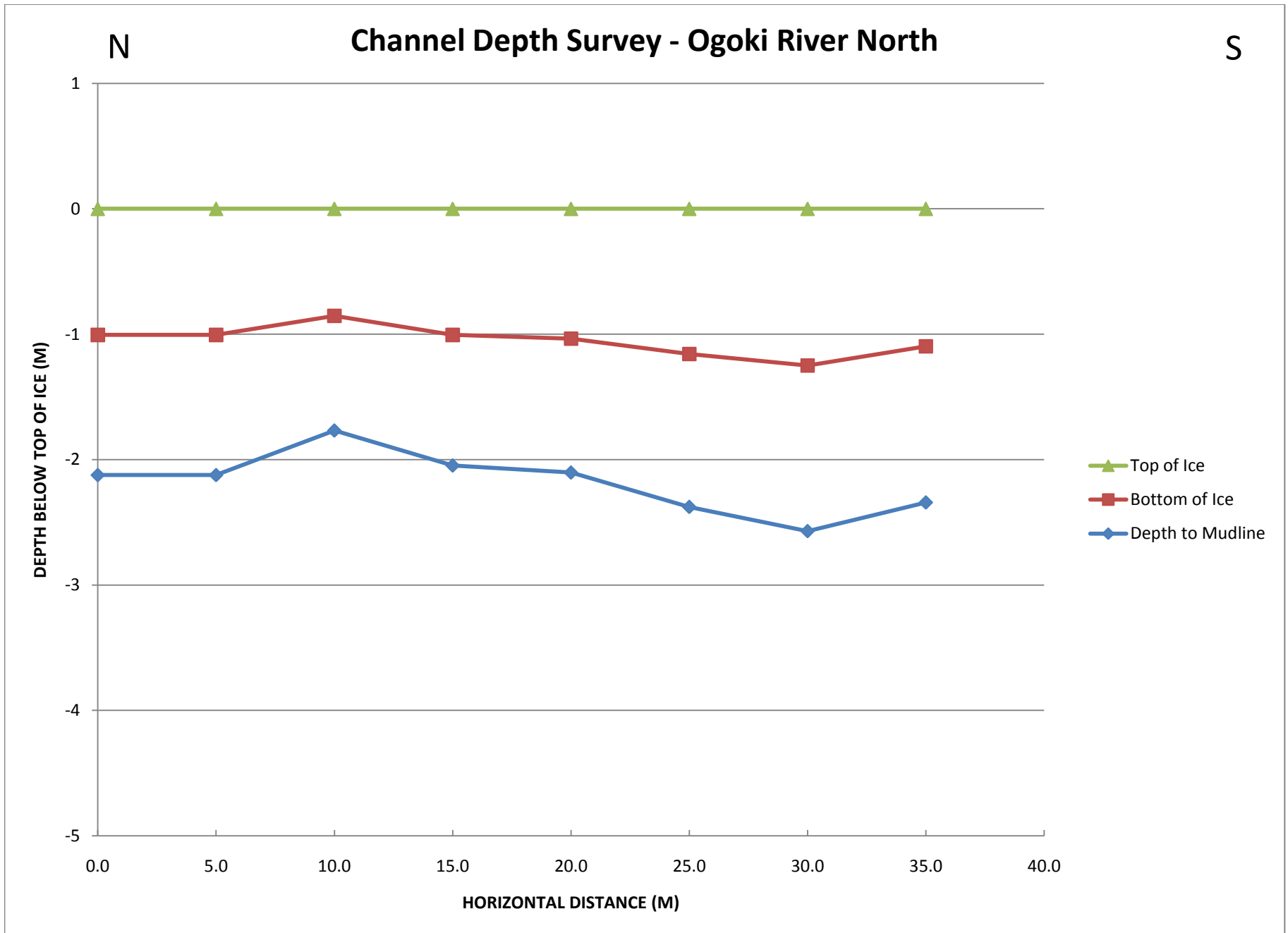
APPENDIX G-5
CHANNEL DEPTH SURVEY - OGOKI RIVER NORTH
CANADA CHROME RAILROAD

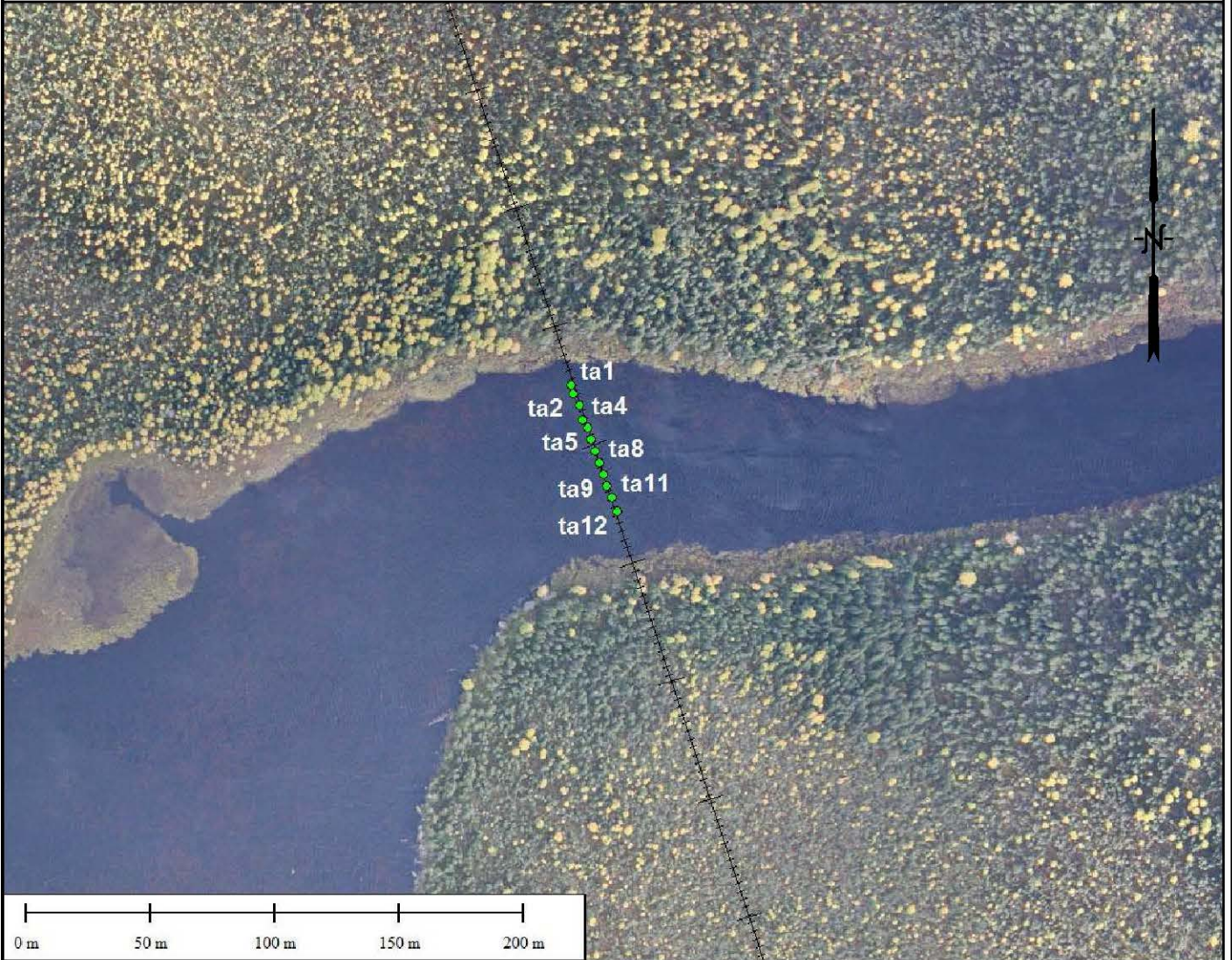
TABLE 5
SUMMARY OF RIVER CHANNEL SURVEY - OGOKI RIVER NORTH

Name	Identifier	Northing	Easting	Date Survey Completed	Total Transect Length (m) ⁽¹⁾	Water Depth (m)	Ice Thickness (m)	Total Depth (m)
Ogoki River North	ogn1	532349.732	5646970.512	2/27/2010	0.0	-1.12	-1.01	-2.12
Ogoki River North	ogn2	532350.533	5646965.805	2/27/2010	5.0	-1.12	-1.01	-2.12
Ogoki River North	ogn3	532352.517	5646960.702	2/27/2010	10.0	-0.91	-0.85	-1.77
Ogoki River North	ogn4	532353.598	5646955.558	2/27/2010	15.0	-1.04	-1.01	-2.05
Ogoki River North	ogn5	532355.093	5646950.881	2/27/2010	20.0	-1.07	-1.04	-2.10
Ogoki River North	ogn6	532356.022	5646946.374	2/27/2010	25.0	-1.22	-1.16	-2.38
Ogoki River North	ogn7	532356.861	5646940.897	2/27/2010	30.0	-1.32	-1.25	-2.57
Ogoki River North	ogn8	532358.158	5646936.132	2/27/2010	35.0	-1.24	-1.10	-2.34

Note:

1) Each depth measurement taken is referenced as a distance from the first point, ogn1.





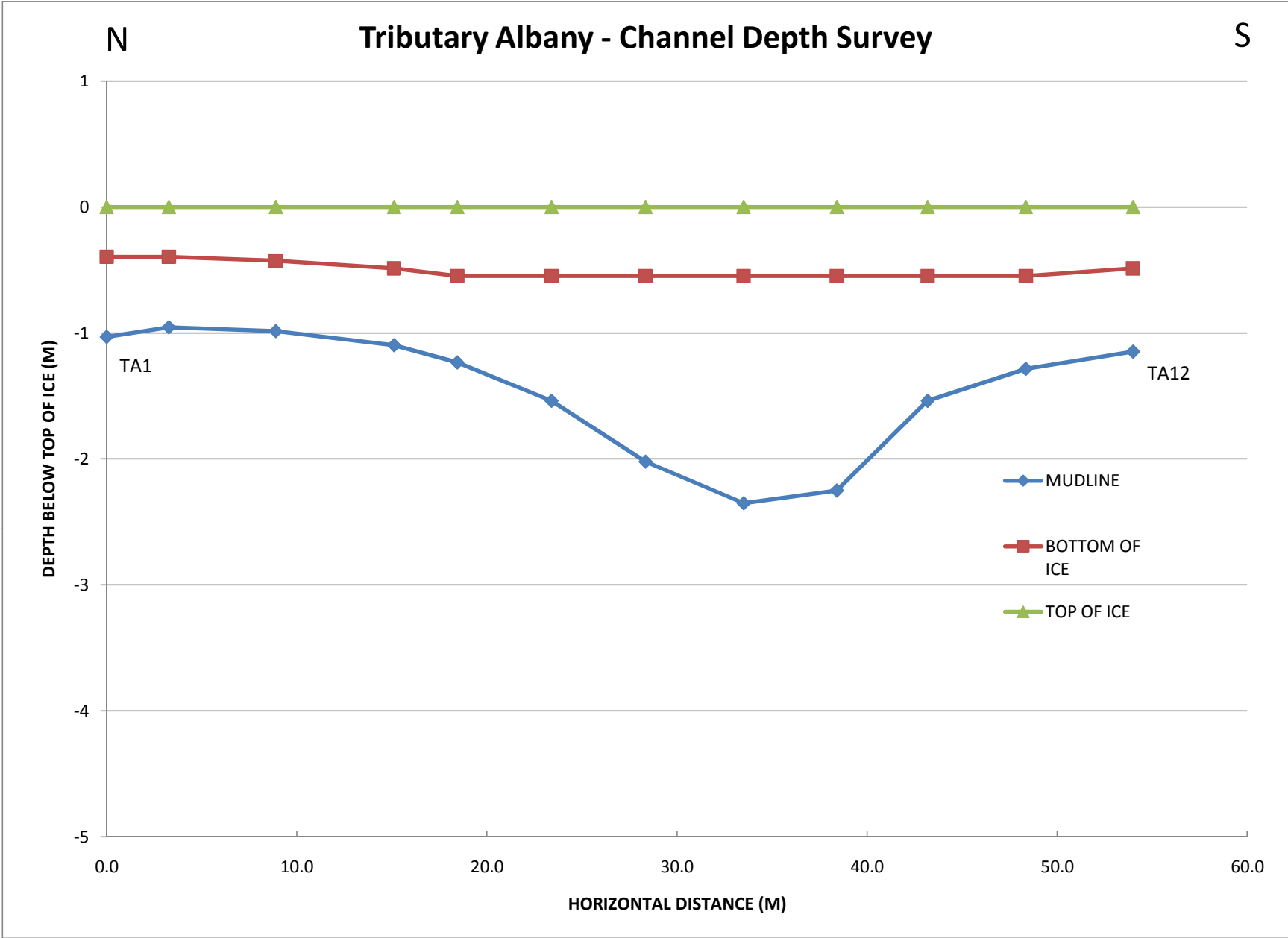
APPENDIX G-6
CHANNEL DEPTH SURVEY - TRIBUTE TO THE ALBANY RIVER
CANADA CHROME RAILROAD

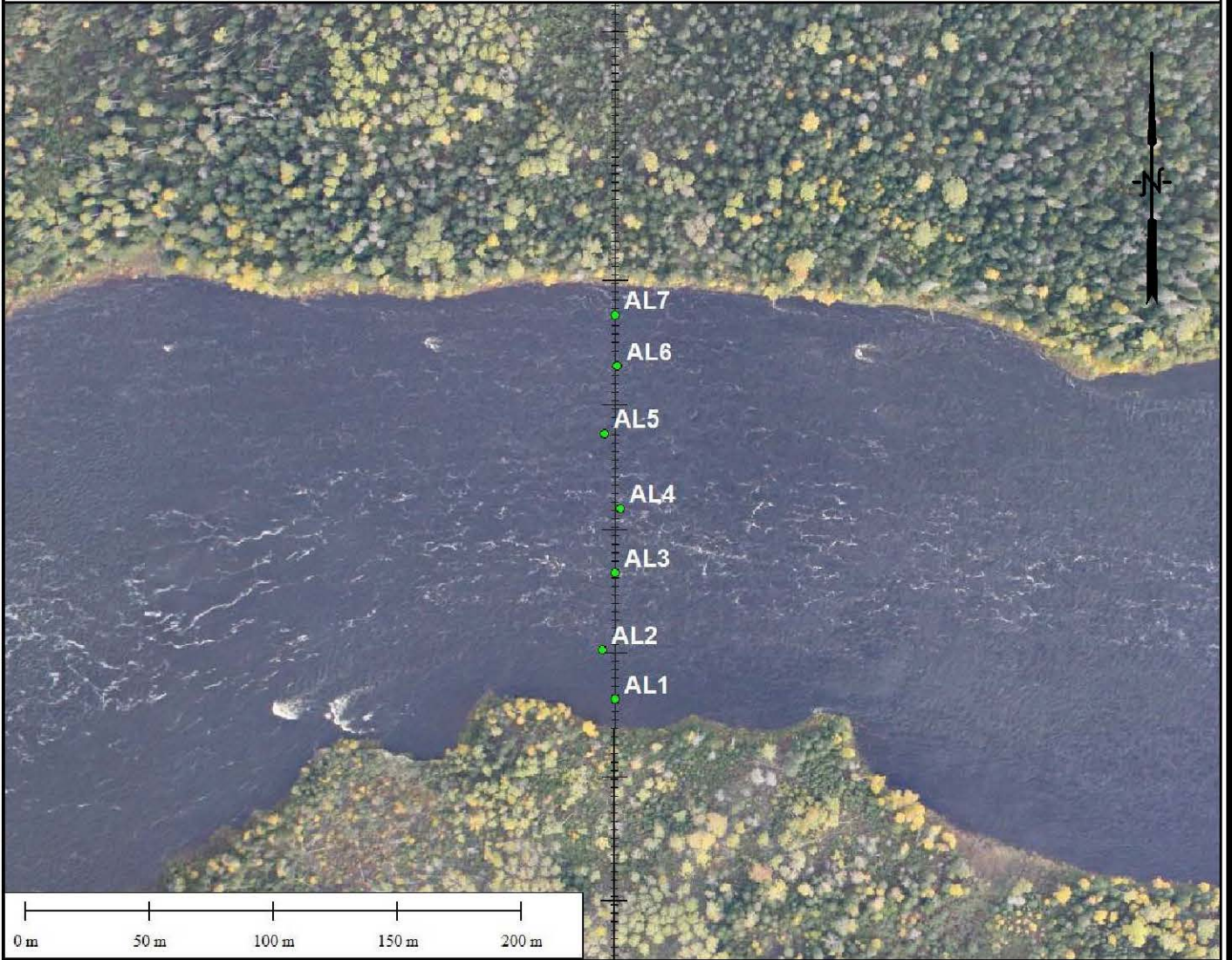
TABLE 6
SUMMARY OF CHANNEL DEPTH SURVEY - TRIBUTARY TO THE ALBANY RIVER

Name	Identifier	Northing	Easting	Date	Distance (m)	Water Depth (m)	Ice Thickness (m)	Total Depth (m)
Trib. Albany	ta1	521502.231	5691520.409	2/28/2010	0.0	-0.64	-0.40	-0.40
Trib. Albany	ta2	521502.71	5691517.174	2/28/2010	3.3	-0.56	-0.40	-0.40
Trib. Albany	ta3	521505.64	5691512.372	2/28/2010	8.9	-0.56	-0.43	-0.43
Trib. Albany	ta4	521506.723	5691506.244	2/28/2010	15.1	-0.61	-0.49	-0.49
Trib. Albany	ta5	521508.76	5691503.617	2/28/2010	18.4	-0.69	-0.55	-0.55
Trib. Albany	ta6	521510.148	5691498.858	2/28/2010	23.4	-0.99	-0.55	-0.55
Trib. Albany	ta7	521511.893	5691494.232	2/28/2010	28.3	-1.47	-0.55	-0.55
Trib. Albany	ta8	521513.675	5691489.388	2/28/2010	33.5	-1.80	-0.55	-0.55
Trib. Albany	ta9	521515.098	5691484.695	2/28/2010	38.4	-1.70	-0.55	-0.55
Trib. Albany	ta10	521516.643	5691480.178	2/28/2010	43.2	-0.99	-0.55	-0.55
Trib. Albany	ta11	521518.367	5691475.307	2/28/2010	48.4	-0.74	-0.55	-0.55
Trib. Albany	ta12	521520.721	5691470.179	2/28/2010	54.0	-0.66	-0.49	-0.49

Note:

Each channel depth measurement is specified as a horizontal distance from the first point specified at ta1.





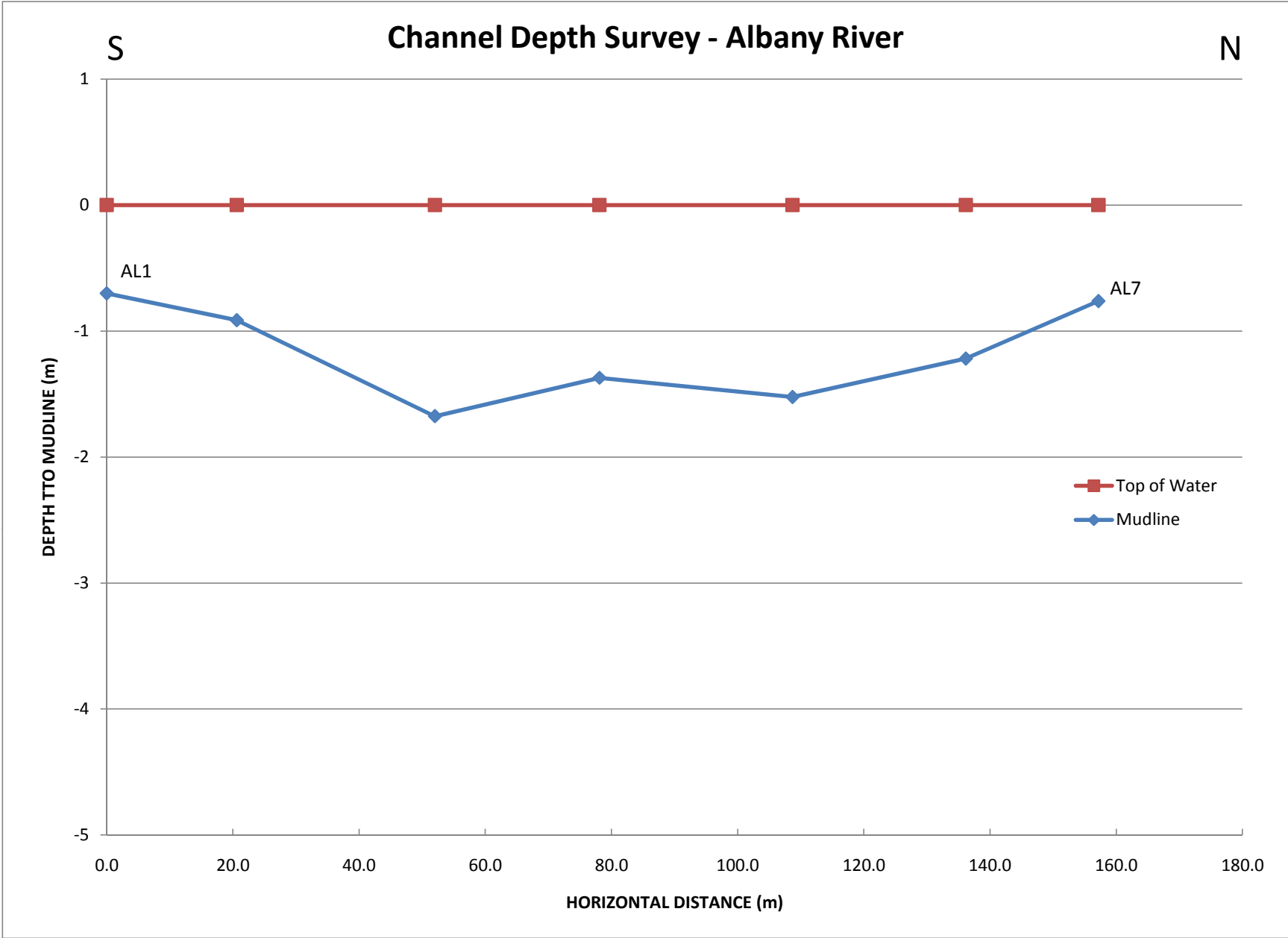
APPENDIX G-7
CHANNEL DEPTH SURVEY - ALBANY RIVER
CANADA CHROME RAILROAD

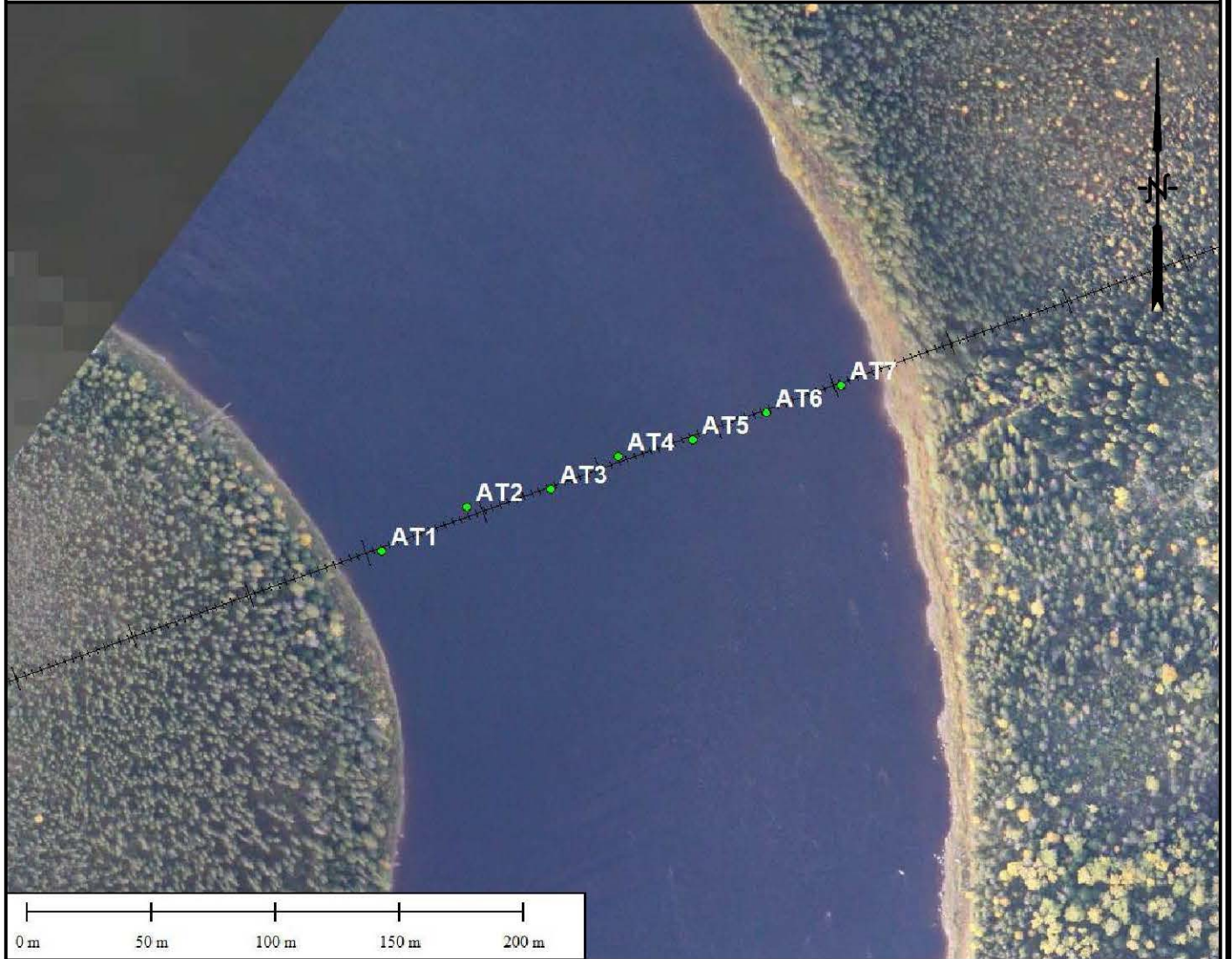
**TABLE 7
SUMMARY OF RIVER CHANNEL SURVEY - ALBANY RIVER**

Name	Identifier	Northing	Easting	Date Survey Completed	Total Transect Length (m) ⁽¹⁾	Water Depth (m)
Albany River	AL1	519259	5702101	4/24/2010	0.0	-0.7
Albany River	AL2	519254	5702121	4/24/2010	20.6	-0.9
Albany River	AL3	519259	5702152	4/24/2010	52.0	-1.7
Albany River	AL4	519261	5702178	4/24/2010	78.1	-1.4
Albany River	AL5	519255	5702208	4/24/2010	108.7	-1.5
Albany River	AL6	519260	5702235	4/24/2010	136.1	-1.2
Albany River	AL7	519259	5702256	4/24/2010	157.2	-0.8

Note:

1) Each depth measurement taken is referenced as a distance from the first point, AL1.





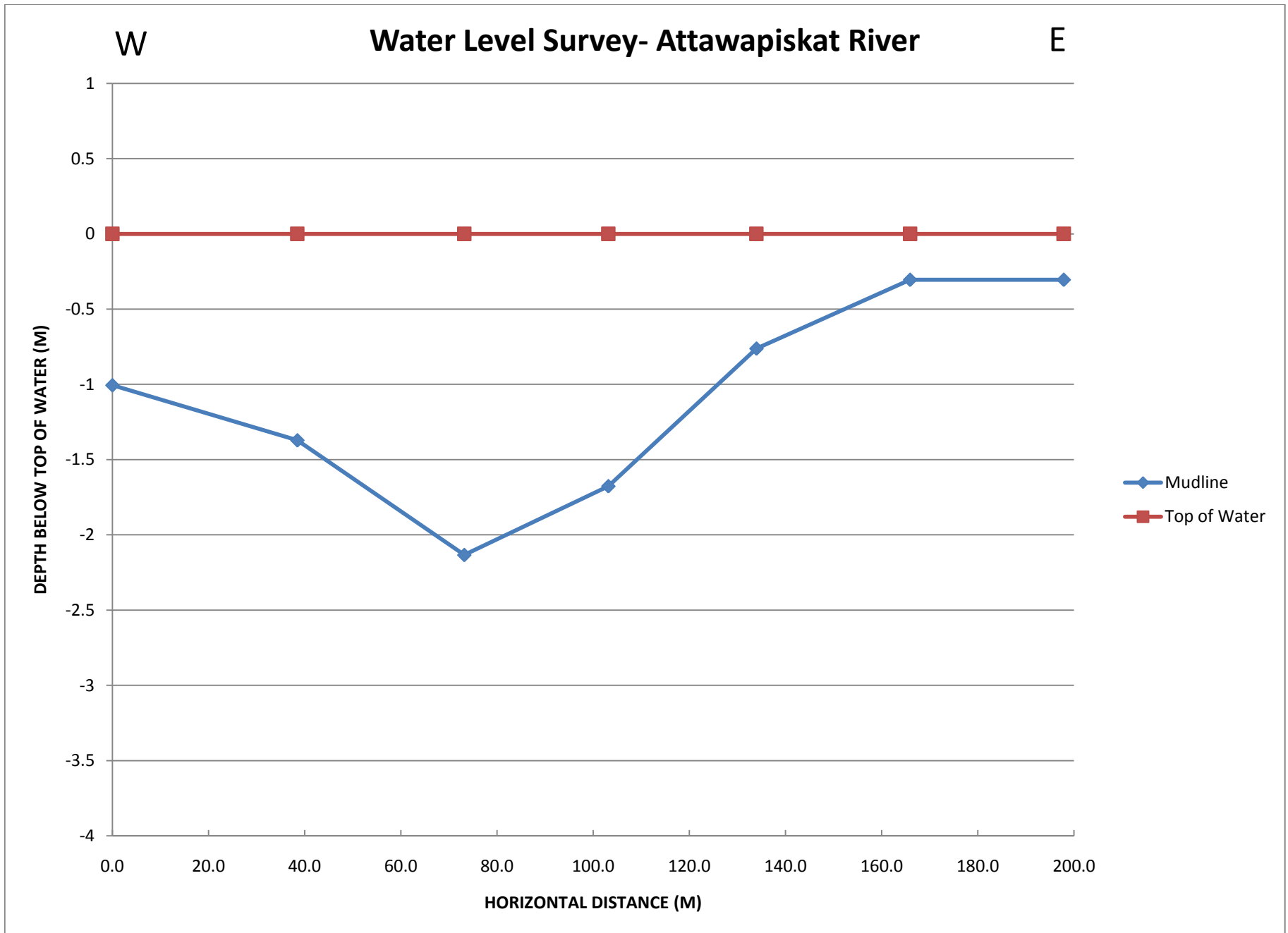
APPENDIX G-8
CHANNEL DEPTH SURVEY - ATTAWAPISKAT RIVER
CANADA CHROME RAILROAD

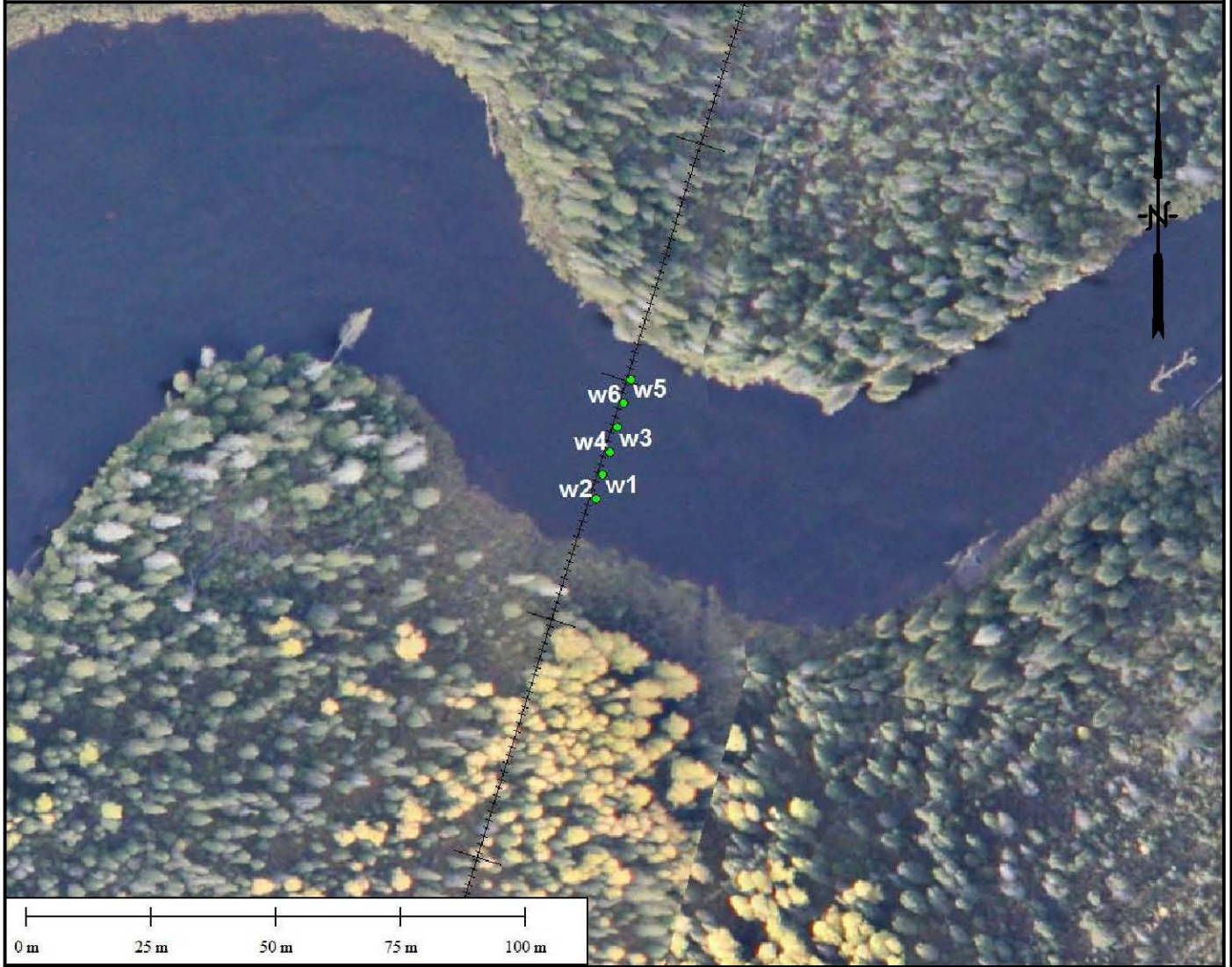
TABLE 8
SUMMARY OF RIVER CHANNEL SURVEY - ATTAWAPISKAT RIVER

Name	Identifier	Northing	Easting	Date Survey Completed	Total Transect Length (m) ⁽¹⁾	Water Depth (m)
Attawapiskat	AT1	525799	5777869	4/24/2010	0.0	-1.0
Attawapiskat	AT2	525833	5777887	4/24/2010	38.5	-1.4
Attawapiskat	AT3	525867	5777894	4/24/2010	73.2	-2.1
Attawapiskat	AT4	525894	5777907	4/24/2010	103.2	-1.7
Attawapiskat	AT5	525924	5777914	4/24/2010	134.0	-0.8
Attawapiskat	AT6	525954	5777925	4/24/2010	165.9	-0.3
Attawapiskat	AT7	525984	5777936	4/24/2010	197.9	-0.3

Note:

1) Each depth measurement taken is referenced as a distance from the first point, AT1.





APPENDIX G-9
CHANNEL DEPTH SURVEY - WABASSI RIVER
CANADA CHROME RAILROAD

**TABLE 9
SUMMARY OF RIVER CHANNEL SURVEY - WABASSI RIVER**

Name	Identifier	Northing	Easting	Date Survey Completed	Total Transect Length (m) ⁽¹⁾	Water Depth (m)	Ice Thickness (m)	Total Depth (m)
Wabassi River	w1	511257.181	5732932.572	3/1/2010	0.0	-2.03	-0.46	-2.49
Wabassi River	w2	511258.413	5732937.511	3/1/2010	5.1	-2.44	-0.52	-2.96
Wabassi River	w3	511259.916	5732941.845	3/1/2010	9.7	-3.12	-0.55	-3.67
Wabassi River	w4	511261.443	5732947.011	3/1/2010	15.1	-3.56	-0.58	-4.14
Wabassi River	w5	511262.611	5732951.857	3/1/2010	20.0	-2.26	-0.55	-2.81
Wabassi River	w6	511264.261	5732956.564	3/1/2010	25.0	-1.47	-0.52	-1.99

Note:

1) Each depth measurement taken is referenced as a distance from the first point, W1.

