

We are committed to providing [accessible customer service](#).
If you need accessible formats or communications supports, please [contact us](#).

Nous tenons à améliorer [l'accessibilité des services à la clientèle](#).
Si vous avez besoin de formats accessibles ou d'aide à la communication, veuillez [nous contacter](#).



CANADIAN EXPLORATION SERVICES LTD

CANADIAN SILVER HUNTER INC.

**Q2341 – T31854 Lease
Magnetometer Survey**

C Jason Ploeger, P.Geo. – April 27, 2017



Abstract

CXS was contracted by Canadian Silver Hunter Inc to perform a high density magnetic survey over Lease numbered T31854. A 20 meter line spacing was chosen for the survey and a total of 6.4 kilometer of magnetometer survey was performed in March of 2017.

CANADIAN SILVER HUNTER INC.

**Q2341 – Lease T31854
Magnetometer Survey**

C Jason Ploeger, P.Geo. – April 27, 2017

TABLE OF CONTENTS

1.	SURVEY DETAILS	3
1.1	PROJECT NAME	3
1.1	CLIENT	3
1.2	LOCATION	3
1.3	ACCESS	4
1.4	SURVEY GRID	4
2.	SURVEY WORK UNDRTAKEN	5
2.1	SURVEY LOG	5
2.2	PERSONNEL	5
2.3	SURVEY SPECIFICATIONS	5
3.	OVERVIEW OF SURVEY RESULTS	6
3.1	SUMMARY	6

LIST OF APPENDICES

APPENDIX A: STATEMENT OF QUALIFICATIONS
APPENDIX B: THEORETICAL BASIS AND SURVEY PROCEDURES
APPENDIX C: INSTRUMENT SPECIFICATIONS
APPENDIX D: LIST OF MAPS (IN MAP POCKET)

LIST OF TABLES AND FIGURES

Figure 1: Location of Lease T31854	3
Figure 2: Claim Map with Lease T31854 Traverses	4
Figure 3: Magnetometer Plan on Google Earth	6
Table 1: Survey Log	5

1. SURVEY DETAILS

1.1 PROJECT NAME

This project is known as Lease T31854.

1.1 CLIENT

Canadian Silver Hunter Inc.

36 Toronto Street, Suite 1000
Toronto, Ontario
M5C 2C5

1.2 LOCATION

Lease T31854 is located approximately 26 km southeast of Cobalt, Ontario. The survey area covers part of mining lease T31854, located in South Lorrain Township, within the Larder Lake Mining Division.

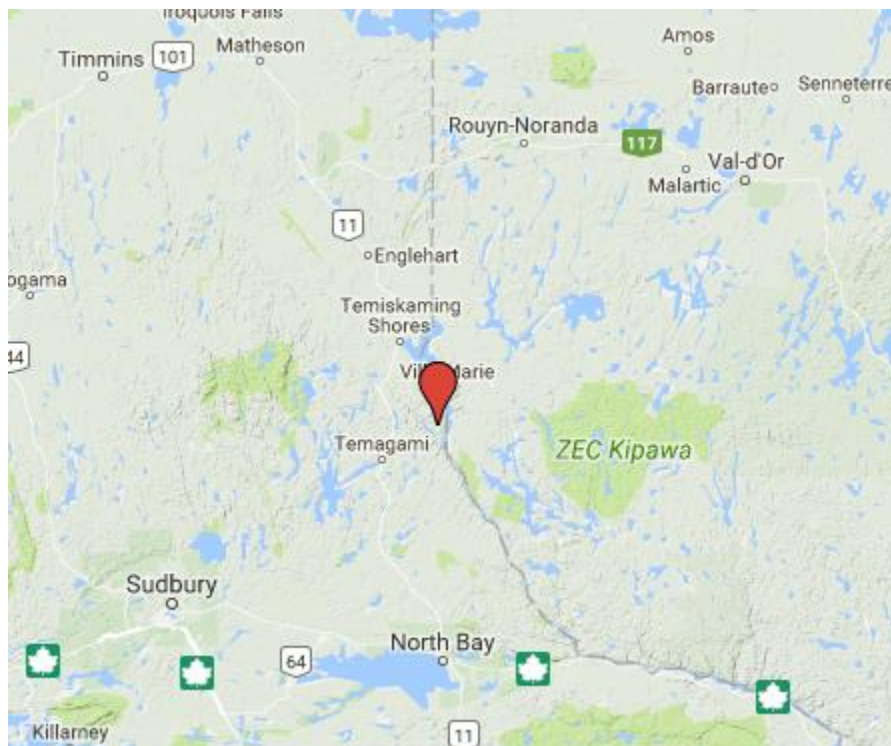


Figure 1: Location of Lease T31854

1.3 ACCESS

Access to the property was attained with a 4x4 truck via highway 567. Approximately 30 km south of the town of Haileybury, Ontario. At this point the survey area is located on the north side of the highway.

1.4 SURVEY GRID

The traversed lines were established using a GPS in conjunction with the execution of the survey. The GPS operator would establish sample locations while remaining approximately 12.5m in front of the magnetometer operator. GPS waypoints and magnetic samples were taken every 12.5m along these controlled traverses. The GPS used was a Garmin GPSMAP 62s.

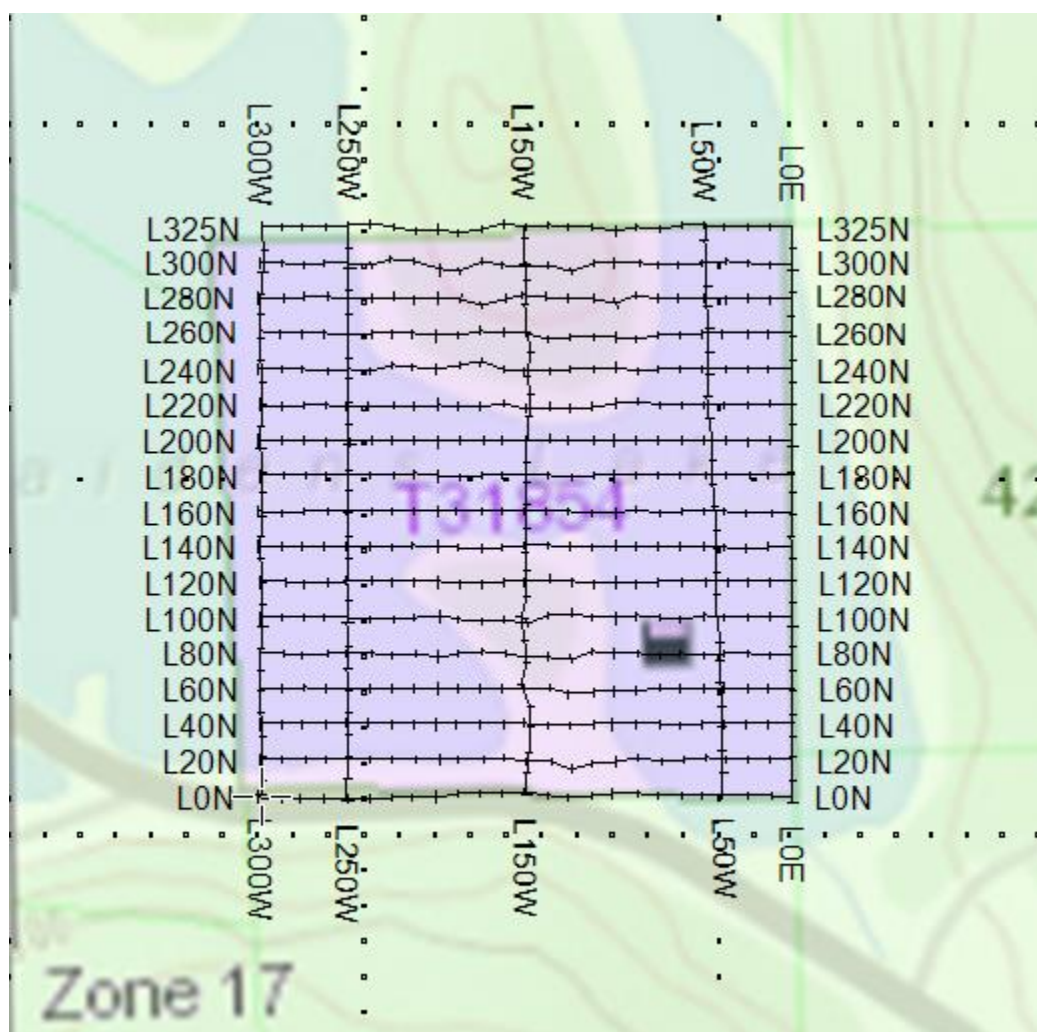


Figure 2: Claim Map with Lease T31854 Traverses

2. SURVEY WORK UNDRTAKEN

2.1 SURVEY LOG

Date	Description	Line	Min Extent	Max Extent	Total Survey (m)
March 28, 2017	Establish access and locate survey area. Perform magnetic survey as scheduled.	0N	300W	0	300
		20N	300W	0	300
		40N	300W	0	300
		60N	300W	0	300
		80N	300W	0	300
		100N	300W	0	300
		120N	300W	0	300
		140N	300W	0	300
		160N	300W	0	300
		180N	300W	0	300
		200N	300W	0	300
		220N	300W	0	300
		240N	300W	0	300
		260N	300W	0	300
		280N	300W	0	300
		300N	300W	0	300
		325N	300W	0	300
		0E	0	325N	325
		50W	0	325N	325
		250W	0	325N	325
		300W	0	325N	325

Table 1: Survey Log

2.2 PERSONNEL

Claudia Moraga of Britt, Ontario conducted all the magnetic data collection while Bill Bonney of Kirkland Lake, Ontario was responsible for the GPS control and GPS waypoint collection.

2.3 SURVEY SPECIFICATIONS

The survey was conducted with a GSM-19 v7 Overhauser magnetometer with a second GSM-19 magnetometer in base station mode for diurnal correction.

A total of 6.4 line kilometers of Magnetometer was read over Lease T31854 on March 28th, 2017. This consisted of 512 magnetometer samples taken at a 12.5m sample interval.

3. OVERVIEW OF SURVEY RESULTS

3.1 SUMMARY

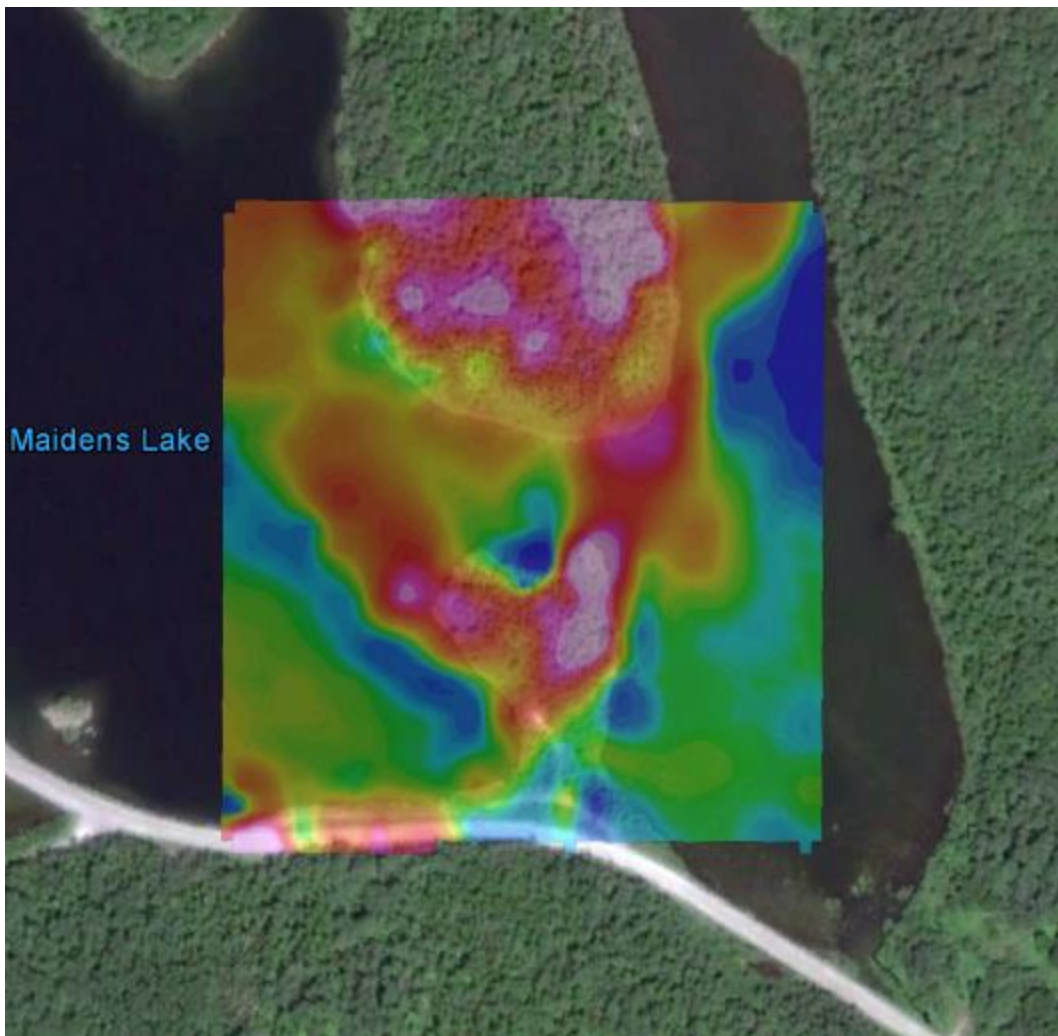


Figure 3: Magnetometer Plan on Google Earth

The only observed culture on the property, fell on the south side of the survey area. This culture is represented by the highway 567 corridor. Some magnetic high results from line 0N may be a result of this culture.

The land portions of the survey indicates elevated magnetic signature. The majority of the water portion of the survey area indicates a more subdued magnetic signature. This signature resembles that of the land portions, which most likely represent the bottom part of the Nipissing Diabase Sill.

Within these magnetically elevated signatures appears magnetic low linear signatures. These may indicate favorable alteration systems. The most prominent of

these features extends 180N at 300W through to 0N at 100W. A second such feature extends from 0N at 162.5W through 0E at 300N. The intersection of these two features near 20N and 150W should be investigated further.

Some weak magnetic low signatures occur through the magnetic high to the north. These may indicate narrow alteration features and should be systematically prospected.

APPENDIX A

STATEMENT OF QUALIFICATIONS

I, C. Jason Ploeger, hereby declare that:

1. I am a professional geophysicist with residence in Larder Lake, Ontario and am presently employed as a Geophysicist and Geophysical Manager of Canadian Exploration Services Inc. of Larder Lake, Ontario.
2. I am a Practicing Member of the Association of Professional Geoscientists, with membership number 2172.
3. I graduated with a Bachelor of Science degree in geophysics from the University of Western Ontario, in London Ontario, in 1999.
4. I have practiced my profession continuously since graduation in Africa, Bulgaria, Canada, Mexico and Mongolia.
5. I am a member of the Ontario Prospectors Association, a Director of the Northern Prospectors Association and a member of the Society of Exploration Geophysicists.
6. I do not have nor expect an interest in the properties and securities of **Canadian Silver Hunter Inc.**
7. I am responsible for the final processing and validation of the survey results and the compilation of the presentation of this report. The statements made in this report represent my professional opinion based on my consideration of the information available to me at the time of writing this report.



C. Jason Ploeger, P.Geo., B.Sc.
Geophysical Manager
Canadian Exploration Services Inc.

Larder Lake, ON
April 27th, 2017

APPENDIX B

THEORETICAL BASIS AND SURVEY PROCEDURES

TOTAL FIELD MAGNETIC SURVEY

Base station corrected Total Field Magnetic surveying is conducted using at least two synchronized magnetometers of identical type. One magnetometer unit is set in a fixed position in a region of stable geomagnetic gradient, and away from possible cultural effects (i.e. moving vehicles) to monitor and correct for daily diurnal drift. This magnetometer, given the term 'base station', stores the time, date and total field measurement at fixed time intervals over the survey day. The second, remote mobile unit stores the coordinates, time, date, and the total field measurements simultaneously. The procedure consists of taking total magnetic measurements of the Earth's field at stations, along individual profiles, including Tie and Base lines. A 2 meter staff is used to mount the sensor, in order to optimally minimize localized near-surface geologic noise. At the end of a survey day, the mobile and base-station units are linked, via RS-232 ports, for diurnal drift and other magnetic activity (ionospheric and spheric) corrections using internal software.

For the gradiometer application, two identical sensors are mounted vertically at the ends of a rigid fiberglass tube. The centers of the coils are spaced a fixed distance apart (0.5 to 1.0m). The two coils are then read simultaneously, which alleviates the need to correct the gradient readings for diurnal variations, to measure the gradient of the total magnetic field.

APPENDIX C

GSM 19



Specifications

Overhauser Performance

Resolution: 0.01 nT
Relative Sensitivity: 0.02 nT
Absolute Accuracy: 0.2nT
Range: 20,000 to 120,000 nT
Gradient Tolerance: Over 10,000nT/m
Operating Temperature: -40°C to +60°C

Operation Modes

Manual: Coordinates, time, date and reading stored automatically at min. 3 second interval.
Base Station: Time, date and reading stored at 3 to 60 second intervals.
Walking Mag: Time, date and reading stored at coordinates of fiducial.
Remote Control: Optional remote control using RS-232 interface.
Input/Output: RS-232 or analog (optional) output using 6-pin weatherproof connector.

Operating Parameters

Power Consumption: Only 2Ws per reading. Operates continuously for 45 hours on standby.
Power Source: 12V 2.6Ah sealed lead acid battery standard, other batteries available
Operating Temperature: -50°C to +60°C

Storage Capacity

Manual Operation: 29,000 readings standard, with up to 116,000 optional.
With 3 VLF stations: 12,000 standard and up to 48,000 optional.
Base Station: 105,000 readings standard, with up to 419,000 optional (88 hours or 14 days uninterrupted operation with 3 sec. intervals)
Gradiometer: 25,000 readings standard, with up to 100,000 optional. With 3 VLF stations: 12,000, with up to 45,000 optional.

Omnidirectional VLF

Performance Parameters: Resolution 0.5% and range to $\pm 200\%$ of total field.
Frequency 15 to 30 kHz.

Measured Parameters: Vertical in-phase & out-of-phase, 2 horizontal components, total field coordinates, date, and time.

Features: Up to 3 stations measured automatically, in-field data review, displays station field strength continuously, and tilt correction for up to $\pm 10^\circ$ tilts.

Dimensions and Weights: 93 x 143 x 150mm and weighs only 1.0kg.

Dimensions and Weights

Dimensions:

Console: 223 x 69 x 240mm

Sensor: 170 x 71mm diameter cylinder

Weight:

Console: 2.1kg

Sensor and Staff Assembly: 2.0kg

Standard Components

GSM-19 magnetometer console, harness, battery charger, shipping case, sensor with cable, staff, instruction manual, data transfer cable and software.

Taking Advantage of a “Quirk” of Physics

Overhauser effect magnetometers are essentially proton precession devices except that they produce an order-of magnitude greater sensitivity. These "supercharged" quantum magnetometers also deliver high absolute accuracy, rapid cycling (up to 5 readings / second), and exceptionally low power consumption.

The Overhauser effect occurs when a special liquid (with unpaired electrons) is combined with hydrogen atoms and then exposed to secondary polarization from a radio frequency (RF) magnetic field. The unpaired electrons transfer their stronger polarization to hydrogen atoms, thereby generating a strong precession signal-- that is ideal for very high-sensitivity total field measurement. In comparison with proton precession methods, RF signal generation also keeps power consumption to an absolute minimum and reduces noise (i.e. generating RF frequencies are well out of the bandwidth of the precession signal).

In addition, polarization and signal measurement can occur simultaneously - which enables faster, sequential measurements. This, in turn, facilitates advanced statistical averaging over the sampling period and/or increased cycling rates (i.e. sampling speeds).

-
- The unique Overhauser unit blends physics, data quality, operational efficiency, system design and options into an instrumentation package that ... exceeds proton precession and matches costlier optically pumped cesium capabilities

APPENDIX C

GARMIN GPS MAP 62S



Physical & Performance:	
Unit dimensions, WxHxD:	2.4" x 6.3" x 1.4" (6.1 x 16.0 x 3.6 cm)
Display size, WxH:	1.43" x 2.15" (3.6 x 5.5 cm); 2.6" diag (6.6 cm)
Display resolution, WxH:	160 x 240 pixels
Display type:	transflective, 65-K color TFT
Weight:	9.2 oz (260.1 g) with batteries
Battery:	2 AA batteries (not included); NiMH or Lithium recommended
Battery life:	20 hours
Waterproof:	yes (IPX7)
Floats:	no
High-sensitivity receiver:	yes

Interface:	high-speed USB and NMEA 0183 compatible
Maps & Memory:	
Basemap:	yes
Preloaded maps:	no
Ability to add maps:	yes
Built-in memory:	1.7 GB
Accepts data cards:	microSD™ card (not included)
Waypoints/favorites/locations:	2000
Routes:	200
Track log:	10,000 points, 200 saved tracks
Features & Benefits:	
Automatic routing (turn by turn routing on roads):	yes (with optional mapping for detailed roads)
Electronic compass:	yes (tilt-compensated, 3-axis)
Touchscreen:	no
Barometric altimeter:	yes
Camera:	no
<u>Geocaching-friendly:</u>	yes (paperless)
<u>Custom maps compatible:</u>	yes
Photo navigation (navigate to geotagged photos):	yes
Outdoor GPS games:	no
Hunt/fish calendar:	yes
Sun and moon information:	yes

Tide tables:	yes
Area calculation:	yes
Custom POIs (ability to add additional points of interest):	yes
Unit-to-unit transfer (shares data wirelessly with similar units):	yes
Picture viewer:	yes
Garmin Connect™ compatible (online community where you analyze, categorize and share data):	yes

- *Specifications obtained from www.garmin.com*

APPENDIX D

LIST OF MAPS (IN MAP POCKET)

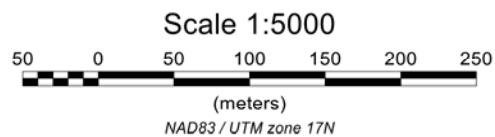
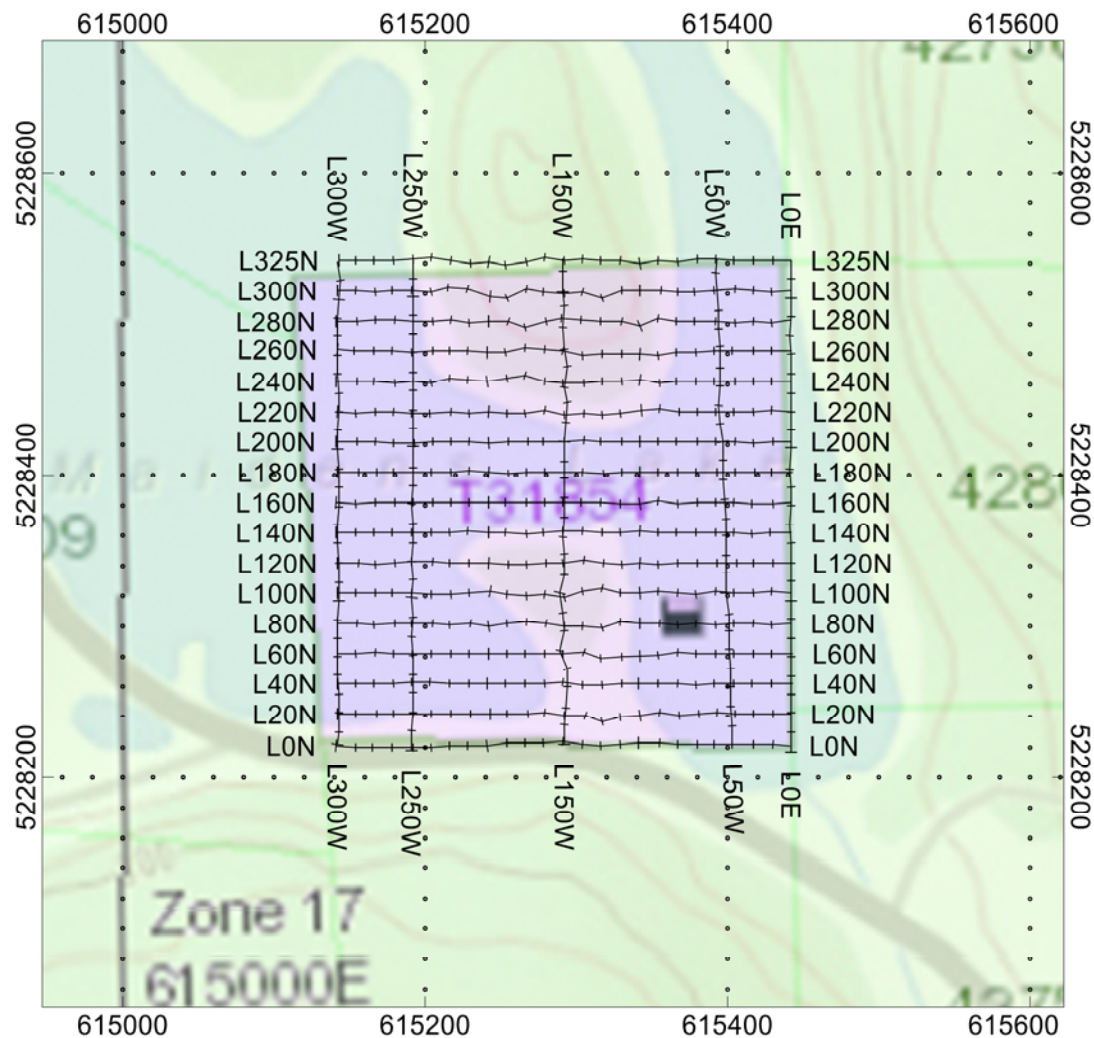
Magnetometer Plan Map (1:1000)

1) Q2341-CSH-T31854-Mag-Cont

Claim Map with Magnetic Traverses (1:5000)

2) Q2341-CSH- T31854-Traverses

TOTAL MAPS = 2



**CANADIAN
SILVER
HUNTER**

LEASE T31854
South Lorrain Township, Ontario

MAGNETIC TRAVERSE PLAN MAP

GSM-19 OVERHAUSER MAGNETOMETER v7

Operated By: Claudia Moraga
GPS Operated By: Bill Bonney
Processed by: C Jason Ploeger, P.Geo.
Map Drawn By: C Jason Ploeger, P.Geo.
April 2017



Drawing: Q2341-CSH-T31854-TRAVERSE