

We are committed to providing [accessible customer service](#).
If you need accessible formats or communications supports, please [contact us](#).

Nous tenons à améliorer [l'accessibilité des services à la clientèle](#).
Si vous avez besoin de formats accessibles ou d'aide à la communication, veuillez [nous contacter](#).

2017 Work Assessment Report

Claim L-4270331

**Tannahill Township (G-3717)
Larder Lake, Mining Division**

NTS 32 D/5

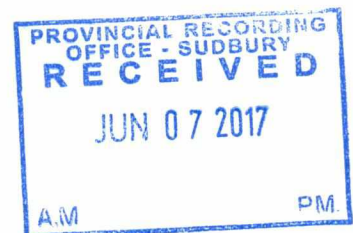
2 · 57875

Prepared By:



**Ed Shynkorenko
Prospector License M-25405
MAAP D838-4240-0A12-2023**

June, 2017



Forward:

This report addresses the 2017 exploration activities conducted on a four unit mining claim being L-4270331, situated in Tannahill Township, Larder Lake Mining Division. The said claim is held 100% by licensed prospector Peter Hermeston.

The property is believed to contain a high gold potential (via past geophysics and nearby associated 6000 metres plus of past drilling), as such it is felt that ongoing additional efforts should be made to further ascertain additional drill target locations. A similar “boot and hammer” effort in 2013 produced a promising gold value of 2.96 g/t taken from a nearby random grab sample of the local host igneous rock type.

The primary focus of the 2017 effort was to revisit a particular area north of where the 2.96 g/t gold sample was taken and to secure additional field data. In this case, soil sampling within a fault zone extending northeastward from the area drilled and from which the potential gold deposit was delineated in the late 1990’s.

The subject property was prospected by the author Ed Shynkorenko (Lic M-25405) along with the claim holder Peter Hermeston (Lic. 1003623); both are Mining Act Awareness Program (MAAP) verified. The field work detailed in this document, being prospecting, soil sampling, and mapping, occurred on May 3rd 2017. An accumulative total of 2 mandays were expended in this effort.

The report was prepared by Ed Shynkorenko. Stations quoted in this report, and shown on the work compilation plan, correspond to the assayed sample “tag number”. All required illustrations and maps are contained separately within the Appendices of this document.

Expenditure rates for work, transportation, etc., were derived from industry standards.

Note: in 2016, the MNDM adjusted the claim map location of the south adjoining block of 6 patented mining claims. As a result, a 100 metre (+/-) overlap of the patented surface rights claims then extended northward onto the southwest portion of claim L-4270331. The owner and MNDM are currently working on an approach to rectify this situation. The claim L-4270331 was staked in 2013 as to not include any of the adjoining patented lands, and at the conclusion of the pending MNDM rectification, the claim will again still not include any of the patented land. As such, the work contained in this particular report was restricted to only that portion of L-4270331 that will not be altered by the MNDM rectification effort. The said area of depicted overlap is shown on the enclosed “Work Compilation Plan” (Appendix F).

Table of Contents

| | |
|--|------------|
| Introduction/History: | Page (i) |
| List of Illustrations: | Page (i) |
| Property Description, Ownership, and Location: | Page (i) |
| Access: | Page (i) |
| Regional & Property Geology: | Page (ii) |
| Work Program: | Page (iii) |
| Rationale: | Page (iii) |
| Daily Log: | Page (iii) |
| Conclusions: | Page (iii) |
| Recommendations: | Page (iii) |
| Author's Qualifications: | Page (iii) |
| Communications (Direct/Indirect): | Page (iv) |
| References: | Page (iv) |

List of Appendices

| | |
|------------|--|
| Appendix A | "Location Map" |
| Appendix B | "Claim Map &, Abstract" |
| Appendix C | "Access Map/Key Map" |
| Appendix D | "Regional Geology Map" |
| Appendix E | "Assessment Work Performed on Mining Lands" Form |
| Appendix F | "Work Compilation Plan" |
| Appendix G | "Assay Results & Receipts" |

Introduction/History:

The general area of the subject property has been known to host gold since the early decades of the 20th century. The lands now contained within the boundaries of the subject property had been staked and worked off and on, over the decades. It is known that in 1931 V. Jordan had staked the southwestern portion of Tannahill Township and conducted surface trenching however, he did not report additional work. In 1935 J. McClosky, and Erie Canadian Mines Ltd., completed trenching and sampling in the vicinity, with selections taken from quartz veining in shear zones returning assayed gold values of up to 29 ppm.

In 1991 G. Bastarache undertook an IP survey, stripping and drilling. His singular 96 metre drill hole intersected mafic flows and feldspar porphyry dykes with minor sulfides. In 1995 two additional holes were drilled intersecting narrow silicified mineralization. In 1996 Otis J/Pacific Mariner undertook line cutting along with magnetometer and IP surveys. The company soon afterward changed their name to Abitibi Mining Corp. / Sedex Mining Corp. From the winter of 1996 to the spring of 1997 Abitibi Mining Corp. / Sedex Mining Corp. undertook considerable drilling with an accumulative total of 6171.16 metres over their "Tannahill Township Project" which included lands now contained within the subject claim.

The property, being claim L-4270331 was acquired by Peter Hermeston in 2013. Given the known high potential of the property (via past geophysics and nearby drilling) it was felt that an additional effort should be made to collect additional field data, and to ascertain possible drill target locations.

List of Illustrations:

All required maps and sketches referred to in this document are contained within the attached Appendices.

Property Description, Ownership, and Location:

The property is currently comprised of a four unit staked mining claim being L-4270331, Tannahill Township, Larder Lake Mining Division. However, due to a MNDM map adjustment in 2016 of the adjoining patented claims boundaries, the size of L-4270331 may be reduced. The claim is held 100% by prospector Peter Hermeston, and is located approximately 60 kilometres southeast of Matheson, Ontario. (*See Appendix A "Location Map" and Appendix B "Claim Map & Abstract"*).

Access:

Access is best gained by utilizing Highway 101 for 59 kilometres eastward of Matheson, Ont., then highway 672 for 15 kilometres southward from its junction with Highway 101. From this point, 9 kilometres eastward along an existing logging road provides access to the property. (*See Appendix C "Access Map/Key Map"*). Access via Highway 672 from Kirkland Lake, Ontario is also available.

Regional & Property Geology:

As previously documented (Keast, 1998), the general area is “hosted in the Archean aged Blake River Group of the Abitibi sub-province. Volcanic rocks of the area are classified chemically as tholeiitic and calc-alkaline. They include a wide spectrum of rock types ranging from basalts to rhyolites”. Generally the property is “underlain by a wide sequence of calc-alkaline flows of predominantly basaltic and andesitic composition. The flows are a generally massive pillowed, or flow brecciated”.

Localized topography conditions are commonly shared amongst the outcrops. Elevations on the property range from 310 metres to 350 metres above sea level. On average, soils consist of a dark deep, and usually wet, organic “A” horizon covering clay, coarse gravel, and in some locations sand (See Appendix D “Regional Geology Map”).



“Soil Sample Taken”

The subject claim is situated within a traditional Boreal Forest setting. Forest cover includes black spruce, alder, cedar, and tamarack in the lower, wetter areas changing to a balsam poplar, white spruce, jack pine, balsam fir, white birch, and trembling aspen over the more elevated areas of the property. The property is partially drained by a creek system and several intermittent draws.

2017 Work Program:

Rationale:

The purpose of the activities reported in this document was to prospect a fault zone that dissects the northern portion of the property. A similar effort in 2013 produced a promising gold value of 2.96 g/t taken from a grab sample of the local host igneous rock type. Locating potential additional drill target sites and to further expand the known gold deposit on the property (as defined by the Abitibi Mining Corp. in the late 1990's), remains the main objective.

Daily Log:

May 3rd 2017: two man-days were spent prospecting on the property. Working as a two man team, approximately 1 kilometre was traversed. The fault zone is, for a large portion, heavily treed with thick stunted cedar, alder, black spruce, patchy balsam poplar and is seasonally inundated with water. Two soil samples taken from the upper "B" horizon were obtained from within the fault zone. Two samples being TAN-01-17 and TAN-02-17 were submitted for assay. No new-additional outcrops were found within the zone.

The assayed sample locations were recorded in NAD 83 using a handheld GPS unit (Garmin Etrex 10 model). Routes traversed, and the locations of the samples taken, are indicated on the enclosed work compilation plan (*See Appendix E "Assessment Work Performed on Mining Lands" form, and Appendix F "Work Compilation Plan"*). The assayed results of the samples taken are provided (*See Appendix G "Assay Results & Receipts"*).

Conclusions:

The assayed samples produced low Au values.

Recommendations:

Despite the low Au values detected in the soil samples, it is recommended that a narrowly scoped geophysical survey (Mag. or VLF) be conducted over the fault zone.

Author Qualifications:

The author is an honour graduate of the Sault College of Applied Arts and Technology forestry program (1980, Sault Ste. Marie, Ontario), and a long time employee with the Ministry of Natural Resources. Over the past three (plus) decades he has been exposed to numerous mining projects (Hemlo, Detour Lake, and Agrium). As a private individual he has staked and transferred numerous mining claims since 1983. An avid reader of accredited material, the author is in the ongoing process of expanding his knowledge base in order to augment his prospecting efforts. Prospecting remains his life-long hobby.

Communications (Direct & Indirect):

Richard Hughes, Abitibi Mining Corp. Vancouver B.C.

Mark Luchinski, Abitibi Mining Corp. Vancouver B.C.

Peter Hermeston, claim holder & fellow prospector, North Bay, Ontario.

References:

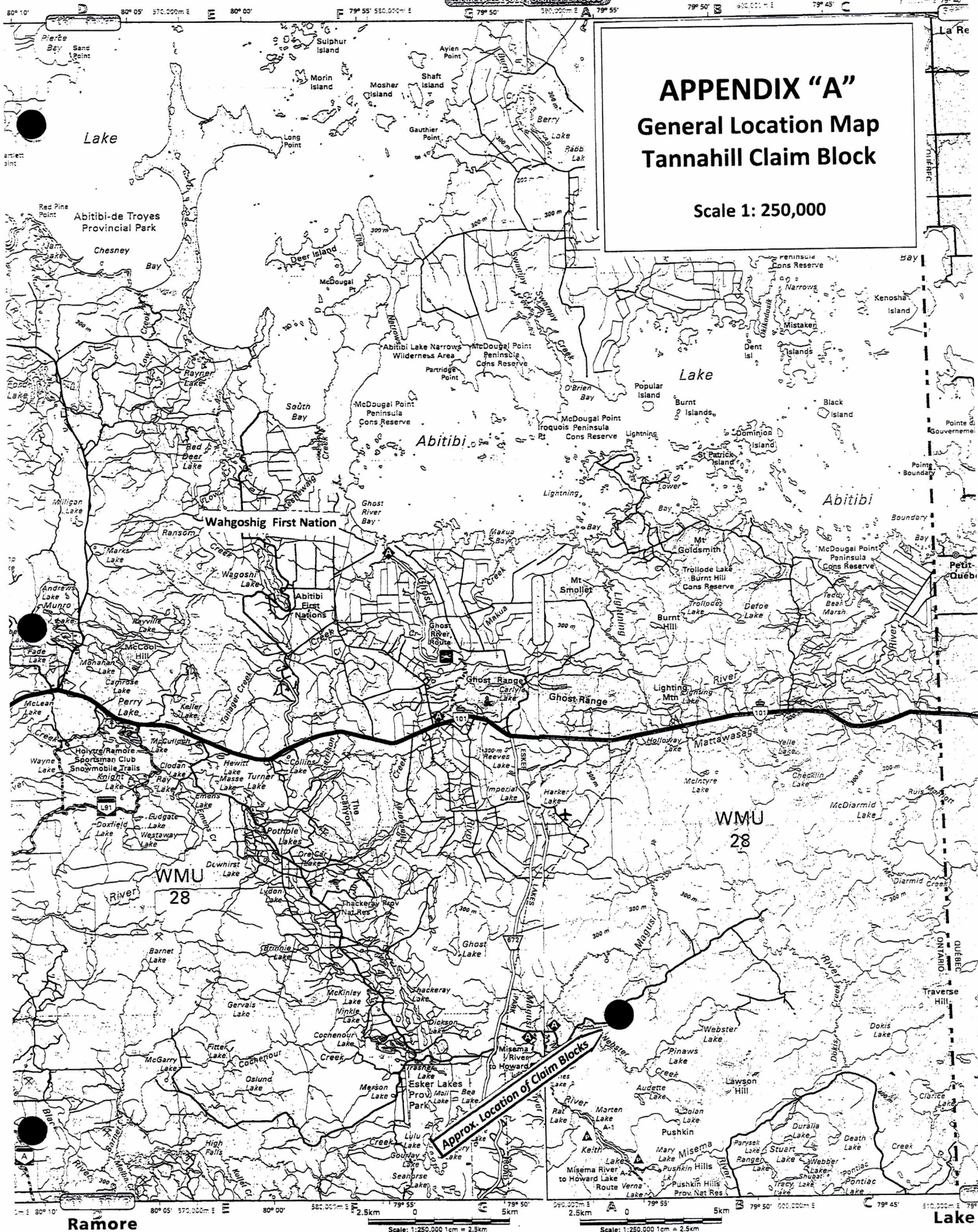
OGS Report 5439 "Industrial Minerals of Northern Ontario-Supplement 2" (Vos and Smith) 1983.

"Sedex Mining Corp. / Abitibi Mining Corp. Tannahill Project Assessment Report on Diamond Drilling" (Keast 1998).

"Geological Report for Tannahill Township" (Obradovich 1989) MND&M # 2.12966

APPENDICES

Scale 1: 250,000

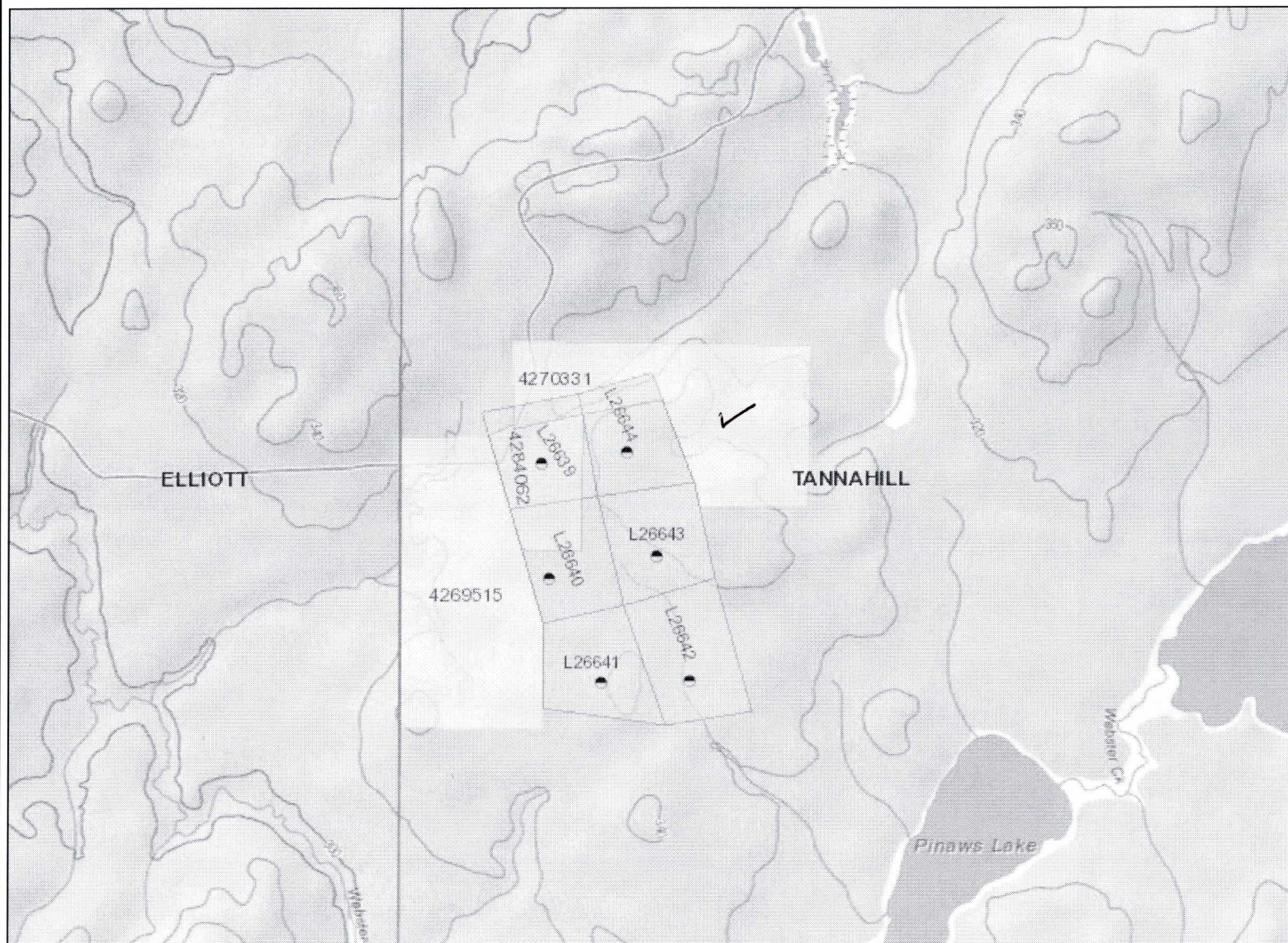


Ramore

Scale: 1:250,000 1cm = 2.5km

Scale: 1:250,000 1cm = 2.5km

Lake A



Legend

Administration Boundaries

- Mining Divisions
- Resident Geologist District
- Townships and Areas
- UTM Grid
- Geographic Lot Fabric
- Other Federal Land

Mineral Tenure Grid

- OMTG Tenure Grid

Alienations

- Withdrawal
- Notice

Unpatented Claim

- Active
- Reconciled
- Pending

Disposition

- Disposition

Disposition Symbols

- Camp
- Disposition Unknown/Pending
- Freehold Patent Mining Rights Only
- Freehold Patent Surface Rights Only
- Freehold Patent Surface and Mining Rights
- Land Use Permit
- Leasehold Patent Mining Rights Only
- Leasehold Patent Surface Rights Only
- Leasehold Patent Surface and Mining Rights
- License of Occupation Mining Use Only
- License of Occupation Surface Use Only
- License of Occupation Surface and Mining Rights
- License of Occupation Uses Not Specified
- Order in Council
- Tower
- WPLA

Geology Layers

- AMIS Sites
- AMIS Features
- Drill Holes
- Mineral Occurrences

0 1.22 km

Projection: Web Mercator

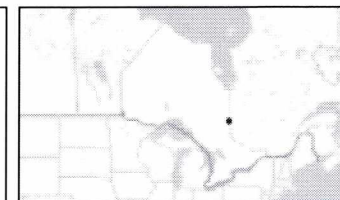


The Ontario Ministry of Northern Development and Mines shall not be liable in any way for the use of, or reliance upon, this map or any information on this map. This map should not be used for: navigation, a plan of survey, routes, nor locations.

© Queen's Printer for Ontario, 2016

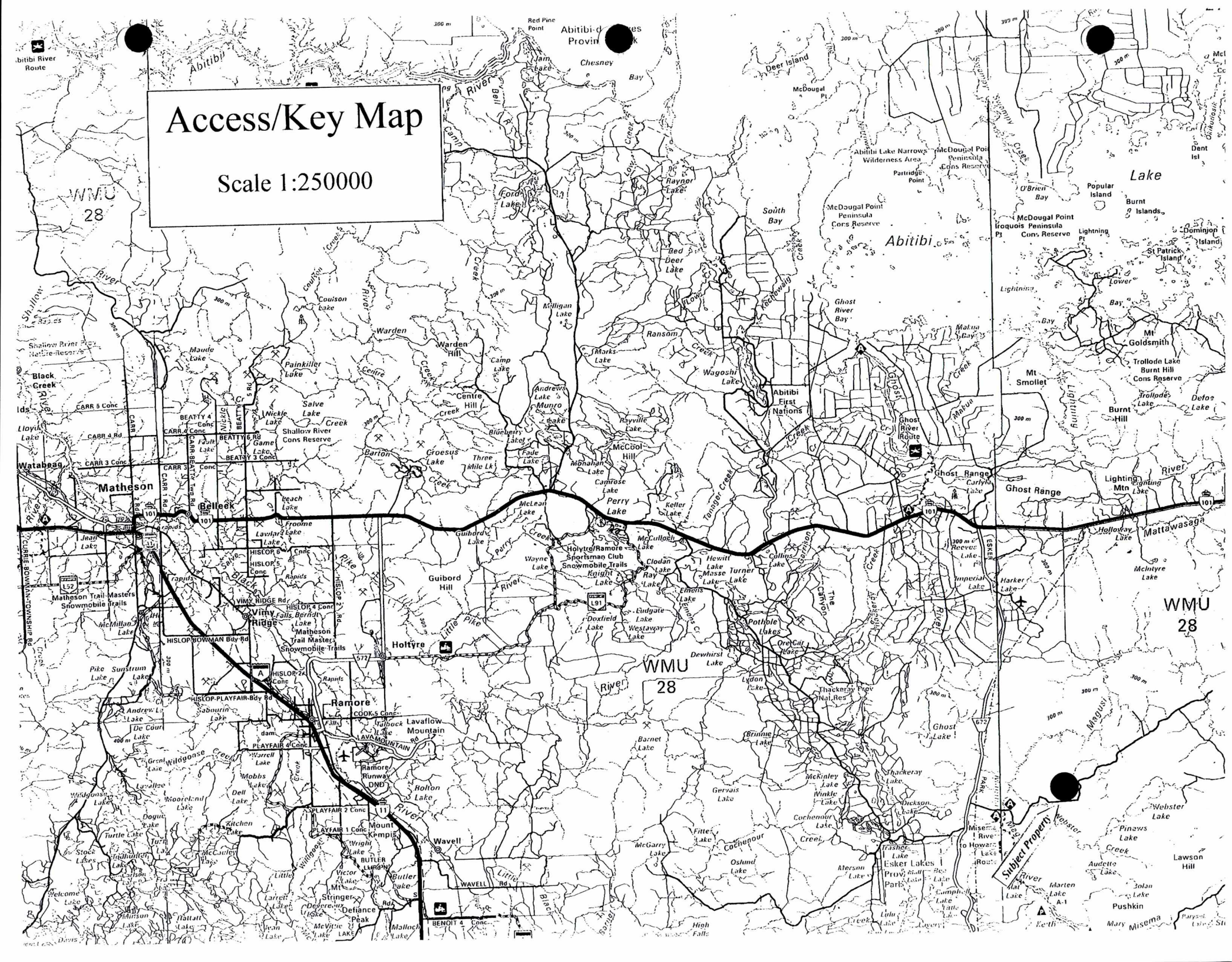
Imagery Copyright Notices: Ontario Ministry of Natural Resources and Forestry; NASA Landsat Program; First Base Solutions Inc.; Aéro-Photo (1961) Inc.; DigitalGlobe Inc.; U.S. Geological Survey.

© Copyright for Ontario Parcel data is held by Queen's Printer for Ontario and its licensors and may not be reproduced without permission.



Access/Key Map

Scale 1:250000





Ministry of
Natural
Resources
Ontario

Conservation
and
Forestry
Branch

APPENDIX "D"

LEGEND
UNCLASSIFIED
CLASSIFIED
SECRET
TOP SECRET

UNCLASSIFIED
SECRET
TOP SECRET

CLASSIFIED
SECRET
TOP SECRET

SECRET
TOP SECRET

TOP SECRET

SECRET
TOP SECRET

TOP SECRET

SECRET
TOP SECRET

TOP SECRET

SECRET
TOP SECRET

TOP SECRET

SECRET
TOP SECRET

TOP SECRET

SECRET
TOP SECRET

TOP SECRET

SECRET
TOP SECRET

TOP SECRET

SECRET
TOP SECRET

TOP SECRET

SECRET
TOP SECRET

TOP SECRET

SECRET
TOP SECRET

TOP SECRET

SECRET
TOP SECRET

TOP SECRET

SECRET
TOP SECRET

TOP SECRET

SECRET
TOP SECRET

TOP SECRET

SECRET
TOP SECRET

TOP SECRET

SECRET
TOP SECRET

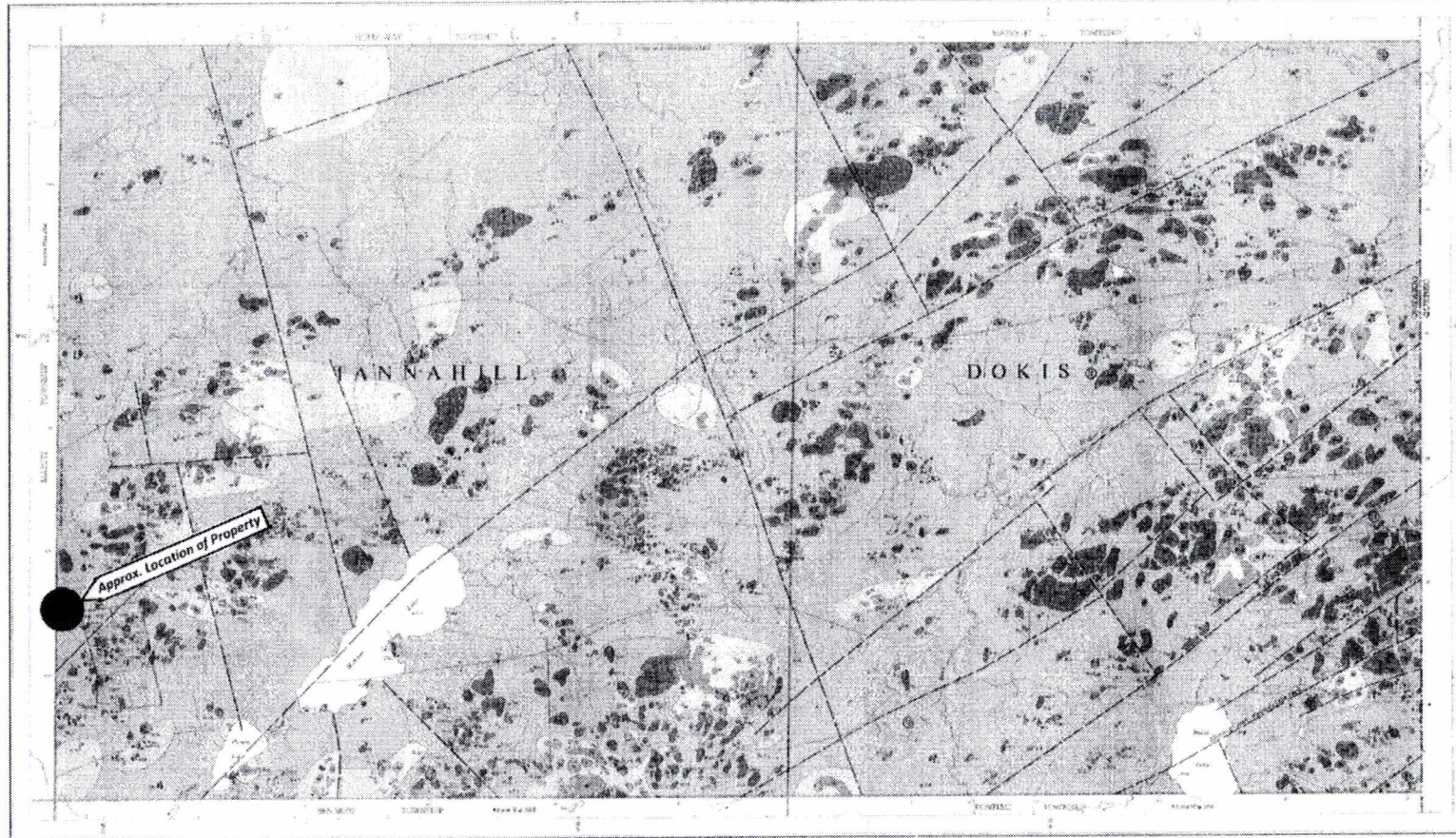
TOP SECRET

SECRET
TOP SECRET

TOP SECRET

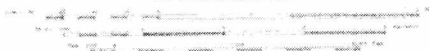
SECRET
TOP SECRET

TOP SECRET



Geological Survey
Map 2007
TANNAHILL AND DOKIS TOWNSHIPS
COCHRANE DISTRICT

Scale 1:100,000 at 1 inch = 1.6 miles



Notes:
1. This map is a compilation of data from various sources.
2. The map is not a legal document.
3. The map is for informational purposes only.
4. The map is not to be used for legal purposes.
5. The map is not to be used for legal purposes.

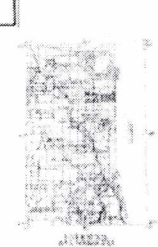
Notes:
1. This map is a compilation of data from various sources.
2. The map is not a legal document.
3. The map is for informational purposes only.
4. The map is not to be used for legal purposes.
5. The map is not to be used for legal purposes.

Notes:
1. This map is a compilation of data from various sources.
2. The map is not a legal document.
3. The map is for informational purposes only.
4. The map is not to be used for legal purposes.
5. The map is not to be used for legal purposes.

Notes:
1. This map is a compilation of data from various sources.
2. The map is not a legal document.
3. The map is for informational purposes only.
4. The map is not to be used for legal purposes.
5. The map is not to be used for legal purposes.

Notes:
1. This map is a compilation of data from various sources.
2. The map is not a legal document.
3. The map is for informational purposes only.
4. The map is not to be used for legal purposes.
5. The map is not to be used for legal purposes.

Geological Survey
Map 2007



Geological Survey
Map 2007

Geological Survey
Map 2007

Geological Survey
Map 2007

Geological Survey
Map 2007

Geological Survey
Map 2007

Geological Survey
Map 2007

Geological Survey
Map 2007

Geological Survey
Map 2007

Geological Survey
Map 2007

Geological Survey
Map 2007

Geological Survey
Map 2007

Geological Survey
Map 2007

Geological Survey
Map 2007

Geological Survey
Map 2007

Geological Survey
Map 2007

Geological Survey
Map 2007

Geological Survey
Map 2007

Geological Survey
Map 2007

Geological Survey
Map 2007

Geological Survey
Map 2007

Geological Survey
Map 2007

Geological Survey
Map 2007

Geological Survey
Map 2007

Geological Survey
Map 2007

Geological Survey
Map 2007

Geological Survey
Map 2007

Geological Survey
Map 2007

Geological Survey
Map 2007

Geological Survey
Map 2007

Geological Survey
Map 2007

Geological Survey
Map 2007

Geological Survey
Map 2007

Geological Survey
Map 2007

Geological Survey
Map 2007

