

We are committed to providing [accessible customer service](#).
If you need accessible formats or communications supports, please [contact us](#).

Nous tenons à améliorer [l'accessibilité des services à la clientèle](#).
Si vous avez besoin de formats accessibles ou d'aide à la communication, veuillez [nous contacter](#).

2016 work report for claim #4267978 and 4274207.

On 2016/05/29 Allan Onchulenko and I traveled the 50 km to the east Loon road and prospected claim 4274207. We started at the New Showing at 16 U 370269 5390927 and spent a few hours examining the surrounding talus field below and to the east of the new showing. There are numerous chunks of pegmatite and pegmatite with quartz that are mineralized with Moly splotches within 25m of the original showing. Then we traversed to the west approximately 500 m and back but lost tracks as I ran out of batteries. We encountered granite, pegmatite and pegmatite with quartz along the way but no other signs of mineralization along the route we took. A map of our approximate tracks is included. No samples taken.

On 2016/10/01 Allan Onchulenko and I traveled the 50 km to the east Loon road and prospected claim 4274207. This day we worked our way from the quad trail the Molly Creek showing at 16 U 370211 5390863. About half the day was spent in this area and we found another mineralized quartz vein with good visible Molly approximately 50 m to the SW at 16 U 370178 5390822. A picture of the mineralization in a float and one of the vein it came from are included herein. We then continued to prospect to the along the cliff face to the area at 16 U 369990 5390661 where I had found a single blotch of Molly last year. Once again we did confirm the new showing from last year with a small quartz area in the pegmatite and three cm size blotches of molly. Between the two showings and on the way back we encountered granite, pegmatite and quartz but no the other mineralization. A picture of our tracks is included. No samples taken.

On 2016/10/22 Allan Onchulenko and I traveled the 50 km to the east Loon road, then by quad 4km to the north and prospected claim 4267978. We parked at the Main trench and traveled east about 80m to 16 U 370206 5392819 where we stripped a small area of pegmatite and found some flakes of molly. A picture is included. We then continued to the east for 250 m to the edge of a pond. We had seen an area of high outcrop here while staking but had never made it back until now. On the top we found a small old pit with some molly in it at 16 U 370465 5392848. A picture of this is included. From here we traveled north next to the pond for about 130m where the pegmatite dips down into a low area. We then headed back west for about 200m where we found a previously un explored pit at 16 U 370282 5393037. A picture of this pit is included. There was visible molly here as well. We then worked our way back to the quads. A picture of our tracks is included. No samples taken.

We are claiming 3 days of work for 2 people.

We are claiming 100km of driving for each day.

3 days at 250 per day each = 1500\$

300km x .50 per km = 150\$

total 1650\$





Elbow Lake

Wideman Lake

Starting L

Paradise Lake

4279194

Tastan Lake

4269978

Johnnies Lake

Big Tro

Anderson Lake

4282608

Lake

Nalla Lake Knobel Lake

Luck Lake

4274207

Bass Lake

© 2016 Google

Google Earth

on Lake

2006

12/12/2015
12/2015 10/2016

Ontario Geological Survey

4267978

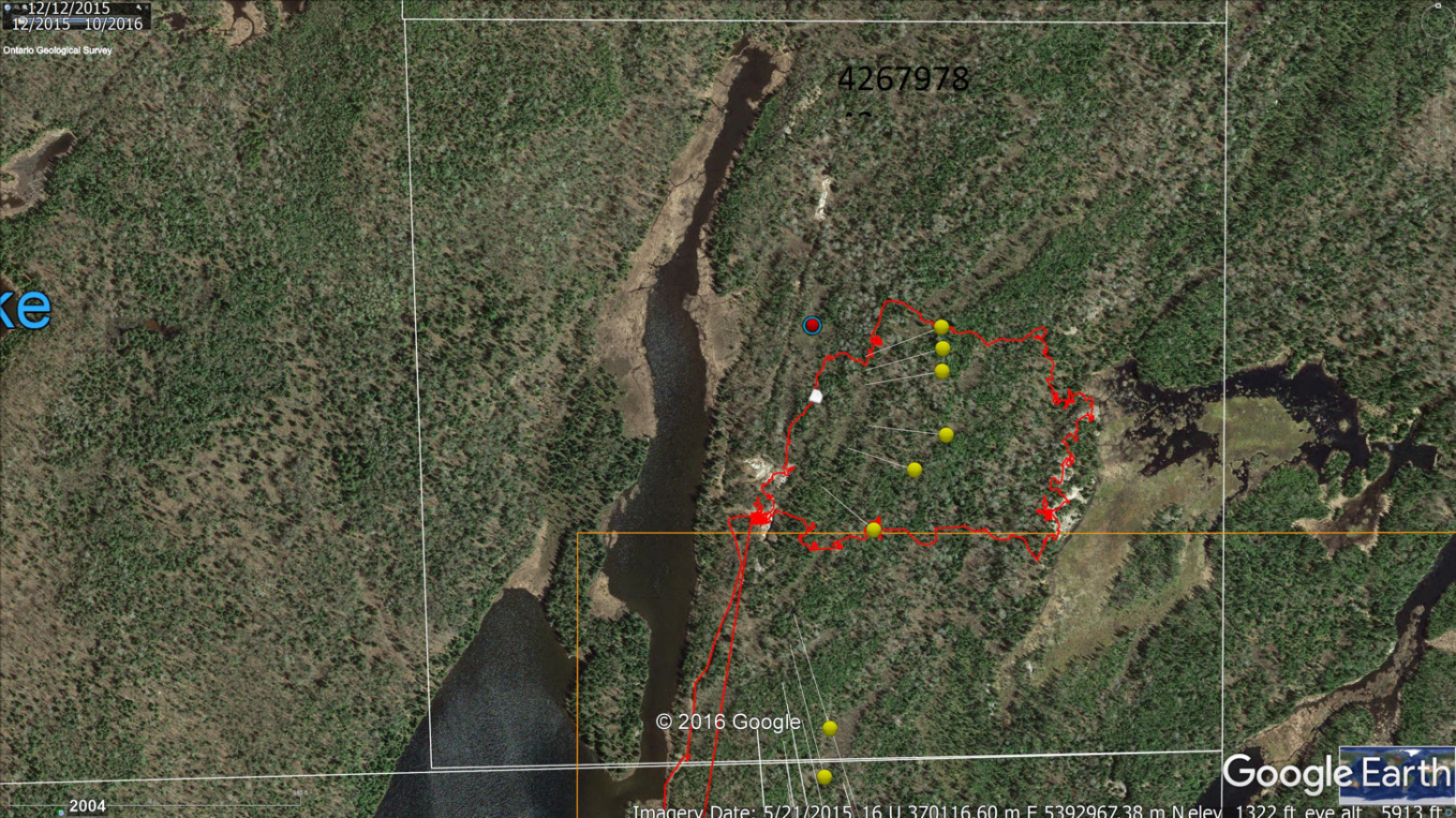
ke

© 2016 Google

Google Earth

Imagery Date: 5/21/2015 16 U 370116.60 m E 5392967.38 m N elev 1322 ft eye alt 5913 ft

2004





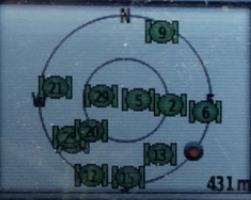
16 U 370475 5392970



GPSmap 62s

16 U 0370465
UTM 5392842

GPS
3m



GARMIN

FIND

PAGE

MARK

MENU

QUIT

ENTER

yellow is aprox. track
after batteries died

4274207

4274207

NEWBLEB011016

© 2016 Google

Google Earth



GPSMap 62s

Speed
0.0 km/h

Location
15 U 033013S
07 W 539083E

12m

NEWBLE011016

GARMIN

FIND

MARK

QUIT

ENTER

PAGE

MENU





start of vein at T6 U
370178 5290822