

We are committed to providing [accessible customer service](#).
If you need accessible formats or communications supports, please [contact us](#).

Nous tenons à améliorer [l'accessibilité des services à la clientèle](#).
Si vous avez besoin de formats accessibles ou d'aide à la communication, veuillez [nous contacter](#).



CANADIAN EXPLORATION SERVICES LTD

CLEGHORN MINERALS LTD.

**Q2246 – Meech Lake Property
Prospecting and Sampling Program**

C Jason Ploeger, P.Geo – February 09, 2017

Cleghorn Minerals Ltd.

Abstract

CXS was contracted to perform a Prospecting and Sampling Program over the Meech Lake Property, to assist in locating and sampling historic trenches. The trenches known as the Kell Showing, T25 and the Waterhole were deemed high priority as strong mineralization and anomalous polymetallic assays were previously reported.

CXS visited the claim in late November 2017, and used historic records to locate and sampled these trenches. A total of 38 Rock Samples from approximately 18.6 kilometres of traverses were performed on the Meech Lake Property.

CLEGHORN MINERALS LTD.

**Q2246 – Meech Lake Property
Prospecting and Sampling Program**

C Jason Ploeger, P.Geol. – February 09, 2017

TABLE OF CONTENTS

1. SURVEY DETAILS..... 19

1.1 PROJECT NAME 19

1.2 CLIENT..... 19

1.3 LOCATION 19

1.4 ACCESS 20

1.5 SURVEY AREA 20

1.6 REGIONAL GEOLOGY..... 20

1.7 PROPERTY GEOLOGY..... 20

1.8 PREVIOUS WORK..... 21

2. SURVEY WORK UNDERTAKEN..... 26

2.1 PERSONNEL 26

2.2 SURVEY SPECIFICATIONS 26

3. OVERVIEW OF SURVEY RESULTS..... 27

3.1 DAY-1 – NOVEMBER 22, 2016 27

3.2 DAY-2 – NOVEMBER 23, 2016 28

3.3 DAY-2 – NOVEMBER 25, 2016 20

3.4 DAY-3 – NOVEMBER 30, 2016 41

3.5 CONCLUSION AND RECOMMENDATIONS 48

LIST OF APPENDICES

- APPENDIX A: STATEMENT OF QUALIFICATIONS**
APPENDIX B: INSTRUMENT SPECIFICATIONS
APPENDIX C: LIST OF MAPS (IN MAP POCKET)
APPENDIX D: ASSAY CERTIFICATES

LIST OF TABLES AND FIGURES

Figure 1: Location of the Meech Lake Property 19

Figure 2: Picture of Sample 62801..... 28

Figure 4: Picture of Sample 62803..... 30

Figure 5: Picture of Sample 62805..... 31

Figure 6: Picture of Sample 85851..... 32

Figure 7: Picture of Sample 85852..... 33

Figure 8: Picture of Sample 85853..... 34

Figure 9: Picture of Sample 85854..... 35

Figure 10: Picture of Sample 85855.....	19
Figure 11: Picture of Sample 62805.....	20
Figure 12: Picture of Sample 62806.....	21
Figure 13: Picture of Sample 62807.....	22
Figure 14: Picture of Sample 62808.....	23
Figure 15: Picture of Sample 62809.....	24
Figure 16: Picture of Sample 62810.....	25
Figure 17: Picture of Sample 62811.....	26
Figure 18: Picture of Sample 62812.....	27
Figure 19: Picture of Sample 62813.....	28
Figure 20: Picture of Sample 62814.....	29
Figure 21: Picture of Sample 62815.....	30
Figure 22: Picture of Sample 85856.....	31
Figure 23: Picture of Sample 85857.....	32
Figure 24: Picture of Sample 85858.....	33
Figure 25: Picture of Sample 85859.....	34
Figure 26: Picture of Sample 85860.....	35
Figure 27: Picture of Sample 85861.....	36
Figure 28: Picture of Sample 85862.....	37
Figure 29: Picture of Sample 85863.....	38
Figure 30: Picture of Sample 85864.....	39
Figure 31: Picture of Sample 85865.....	40
Figure 32: Picture of Sample 85866.....	41
Figure 33: Picture of Sample 85867.....	42
Figure 34: Picture of Sample 85868.....	43
Figure 35: Picture of Sample 85869.....	44
Figure 36: Picture of Sample 85870.....	45
Figure 37: Picture of Sample 85871.....	46
Figure 38: Picture of Sample 85872.....	47
Figure 39: Picture of Sample 85873.....	48

1. SURVEY DETAILS

1.1 PROJECT NAME

This project is known as the **Meech Lake Property**

1.2 CLIENT

CLEGHORN MINERALS LTD.,

152 Chemin de la Mine Ecole
Val D'Or, Quebec
J9P 7B6

1.3 LOCATION

The Meech Lake Property is located approximately 22 km north of Matachewan, Ontario. The entire survey area is located in McNeil, Argyle and Robertson Townships, within the Larder Lake Mining Division.

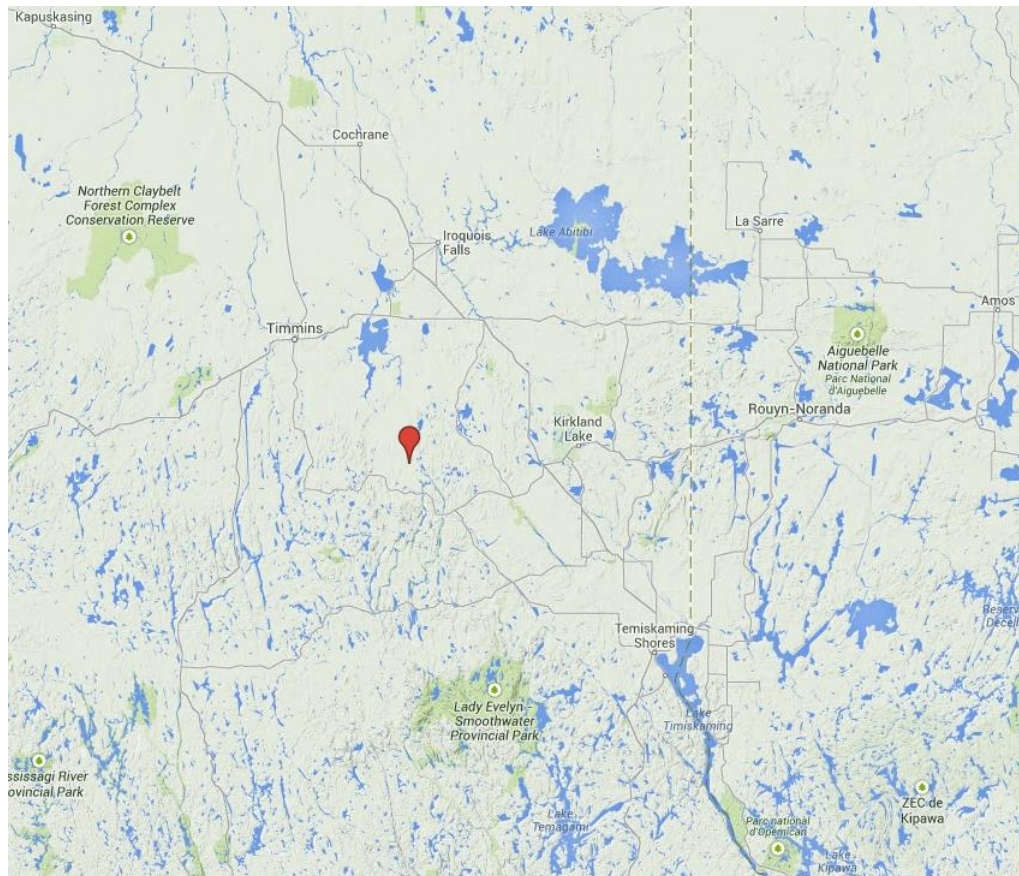


Figure 1: Location of the Meech Lake Property

1.4 ACCESS

Access to the property was attained via Highway #566 which extends west from the end of highway #66 in Matachewan. Highway #566 was travelled 17.5 kilometers, then a forestry access road heading north was taken for additional 4 kilometers to a creek that is not passable by truck. An ATV was then employed for the final 14 kilometers north to the survey area.

1.5 SURVEY AREA

The traversed lines were established using a GPS.

1.6 REGIONAL GEOLOGY

Archean (2.75 to 2.67 billion years) granite/greenstone belts dominate the Abitibi Sub province, which lies in the southeast part of the Archean Superior craton, and includes the Timmins-Kirkland Lake District. Rocks in the greenstone belts include komatiitic, tholeiitic and calc-alkalic metavolcanic rocks (oldest), overlain by turbidite-dominated formations; and alkalic metavolcanic rocks and associated alluvial-fluvial metasedimentary rocks. The “granites” include tonalite-trondhjemite granodiorite batholiths, smaller granodiorite intrusions and syenite stocks.

The Meech Lake Prospect is in the south-central part of the Abitibi Greenstone Belt, the southern-most greenstone belt of the Abitibi Sub province. The Abitibi Greenstone Belt (AGB) extends for more than 500 km east-west from Chibougamau, Québec to west of Timmins, Ontario, making it the largest exposed greenstone belt in the world.

The AGB forms a large, east-trending synclinorium in the Timmins-Kirkland Lake-Rouyn-Noranda area extending between the Lake Abitibi and Round Lake batholiths (Jensen, 1985). The northern limb of the synclinorium is transected by the Destor-Porcupine Fault, whereas the southern limb is cut by the Kirkland Lake-Larder Lake-Cadillac Fault; many regional scale structures have been identified between the two Regional fault systems. The Meech Lake Prospect is situated on the southern limb of the synclinorium within the central fault block.

1.7 PROPERTY GEOLOGY

The Property is dominantly underlain by rocks of the Blake River Group comprising calcalkaline basalt, andesite, dacite and rhyolite flows and pyroclastic rocks, intercalated with minor Mg-rich tholeiitic basalts. The andesite flows are light grey-green, generally massive and carbonate rich, and typically interbedded with fine ash and crystal ash tuffs. The northeastern part of the Property is underlain by a lobe of a large syenitic intrusion that extends eastward beyond the Property boundary and thence to the southeast through the eastern part of Baden Township. The metavol-

canic rocks have been intruded by minor ultramafic (dunite), mafic (gabbro) and felsic dikes and sills, interpreted to be differentiates of this large intrusion, that occur irregularly throughout the Property. All the mafic, and especially ultramafic, dikes have strong magnetic-response signatures. A dunite dike in the western part of the Property hosts the Ni-Cu-Pt-Pd-Au occurrence known as the Kell's showing, as well as the uncatalogued West Dunite showing. The felsic dikes and sills are mainly fine to medium grained, pink to white, massive syenite.

The rocks strike generally east, have a steep to vertical dip, and are extremely strained and altered. The axis of a broad, east-southeast oriented synclinorium is interpreted to pass through central Argyle Township implying that the volcanic sequence on the property face predominantly southward. The volcanic rocks are regularly sheared, and locally exhibit chlorite and carbonate alteration. Three prominent sets of high-strain (shear) zones and brittle faults transect the property. A set of "late", east-trending sinistral faults offset geophysical magnetic-response anomalies that are interpreted as dikes and zones of sulphide mineralization. Associated secondary faults occur at a steep angle to the east-west faults. Mineralization in the western part of the Property is interpreted to be associated with north-trending shear-zones that are occasionally coincident with the secondary (north-south) brittle faults. The known mineralized intrusions (dikes) are likely coincident with "early" north-east trending shear zones.

A notable northeast-striking shear zone, evident from legacy geophysical surveys, is interpreted to cross the south boundary in the center of the property and extend to the northeast where it encounters the syenitic batholith. It may partly form a contact between the southeast parts of the syenitic intrusion the calc-alkaline country rock. It appears to be offset by several "late" brittle faults. The "East showing" occurs south of Muhquoh Lake in a syenite dike that has intruded along this high-strain zone.

1.8 PREVIOUS WORK

Baker (1947) – Mr. Hugh M. Kell:

Report on prospecting work completed on the Kell claims located in McNeil, Robertson, Argyle and Baden Townships. A magnetometer was set up directly on top of the massive sulphide showing and magnetic readings were taken in all directions from the showing covering an area of about 200 feet. The report includes plans with location of drill holes that are not mentioned in the text. The report includes work completed within the Property's boundaries.

42A02NW0087 (1951) – B.W. Lang:

Report on a magnetic survey of 57 mining claims in the Matachewan area, Ontario. The purpose of this survey was to delineate a sulphide lens comprising high grade assays of copper, nickel, platinum and palladium. The magnetic survey outlined several anomalies that are considered to represent two different types of intrusive rocks. Zinc, gold and silver mineralization was found along the margins or within the

limits of these anomalies in granite or in sheared volcanic rocks close to the granite contact. The report includes 2 plans and work completed within the Property's boundaries.

Sullivan and McFarland (1951) – Hoyle Mining Company Limited:

Assessment report on the Kell claims in the Argyle Township. The report includes brief geology, description of showings with corresponding gold samples and a claim map. The report includes work completed within the Property's boundaries.

Savage (1952) – Hoyle Mining Company Limited:

Report on a visit made on the Kell claim property to examine core from the diamond drilling in progress. The report includes work completed within the Property's boundaries.

42A02SW8416 (1973) – J.A. Witherspoon and Mid-North Engineering Services Ltd.:

Report on ground magnetic and electromagnetic surveys on a 24-claim group located in the Argyle Township, in Matachewan area, Ontario. The magnetic survey outlined several weak anomalies including two main zones of weak to moderate magnetic anomalies previously described in 1951. The report includes 2 plans and work completed within the Property's boundaries.

42A02SW0098 (1974) – New Kелore Mines Limited:

Report describes the results of diamond-drilling on the geophysical anomalies located on a 24-claim group property in Argyle Township, in Matachewan area, Ontario. Eight (8) drill holes totaling 2,100 feet were completed and assay results for base metals and gold are included. The report includes a certificate of analysis for work completed within the Property's boundaries. Drilling confirmed that the sulphide mineralization carries interesting values in precious metals, copper and nickel in a strongly altered dunite dike; low-grade gold mineralization was also encountered.

Hole #1, which tested the Waterhole showing, returned 0.11 oz./t Au, 5.0% Zn over a 3-foot interval from 88.8 ft. to 91.8 ft., and 0.21 oz./t Au, 1.35% Zn over 3.2 ft. (108.7 ft. to 111.8 ft.). Hole #3, drilled west of the Kell's showing, intersected 1.2 feet grading 0.78 % Ni, 1.48% Cu, 0.014oz/t (0.48 g/t) Pt, 0.028 oz./t (0.96 g/t) Pd, and trace Au.

Szetu (Dec. 1974) – New Kелore Mines Limited:

Report on ground magnetic and electromagnetic surveys covering four new claims on the east side of the 24-claim group property located in the Argyle Township. The report includes work completed within the Property's boundaries.

42A02SW0395 (1974) – New Kелore Mines Limited:

Diamond-drill logs of the 8 drill holes mentioned in report **42A02SW0098**. It also includes a location map of the drill holes. Diamond-drill hole #6 is outside the current

Property's boundaries.

Szetu (1975) – New Keloire Mines Limited:

Report on a geological survey carried out to cover four claims to the east of the 24-claim group located in Argyle Township. Also, given in this report are the results of a detailed proton magnetometer survey. The report includes work completed within the Property's boundaries.

42A02SW0088 (1975) – New Keloire Mines Limited:

Report on a program of exploratory drilling for gold in the on the 24-claim group property in Argyle Township, in Matachewan area, Ontario. Four (4) drill holes totaling 1,050 feet were completed to cover the required assessment work for all but the west four claims of the property. The gold occurrences noted on the property are apparently associated with relatively weak sulphide mineralization; the occurrence of free gold has not been verified. The report includes two plans with drill hole locations. The four drill holes are located within the Property's boundaries.

42A02SW0099 (1975) – New Keloire Mines Limited:

Diamond-drill logs of the 4 drill holes mentioned in report **42A02SW0088**. It also includes a location map of the drill holes along with a claim maps and geophysical survey maps. The four drill holes are located within the Property's boundaries.

Jensen (1984) – Melrose Resources Limited:

Report on a total field intensity magnetic survey conducted on 72 contiguous unpatented claims in the Argyle Township in the Larder Lake mining division. The purpose of the Magnetic survey was to define the lithological units, locate sulphide bodies similar to the high grade showing near the northern boundary, identify the locations of faults and shear zones, and to locate favorable areas for gold mineralization. The report includes work completed within the Property's boundaries.

42A02SW0073 (1984) – Melrose Resources Limited:

Report on a magnetic survey of the Larder Lake mining division in Argyle Township. The report includes a magnetic survey map.

42A02SW001 (1987) – Kasran Resources Ltd.:

Report on VLF-EM surveys of the Larder Lake mining division in Argyle Township. The report includes several maps including 4 VLF-EM survey maps and a geophysical compilation map.

42A02SW0054 (1988) – Peter Island Resources:

Report on diamond-drilling on the Larder Lake mining division in Argyle Township. Four (4) holes were drilled in three locations for a total length of 1445 feet. The drill holes are within the Property's boundaries.

Jolliffe (1991) – Trump Reserve Minerals Ltd. and Storimin Exploration Ltd.:

Report on geological mapping and prospecting on the Robertson Township property in the Matachewan area. The purpose was to investigate the potential for volcanogenic massive sulphides near Nokomis Lake, where previous airborne and ground geophysical surveys had outlined weak conductors and magnetic anomalies. The report includes two claim maps, two geology maps and a geology map of the Meech Lake prospect. The southwestern part of the Robertson Township property slightly overlaps the northeastern part of the Meech Lake Property.

42A02SW9700 & 42A02SW0007 (1992) – Trinity Explorations:

Report on ground exploration on the Larder Lake mining division in Argyle, McNeil and Robertson townships. A grid was established, total field magnetic, vertical magnetic gradient and two channel VLF-EM geophysical surveys were completed as well as a program of prospecting, geological mapping and sampling from trenches. The report includes sample descriptions with corresponding mineral grades for Au, Ag, Cu, Ni, Pt and Pd, assay certificates, claims maps, total field magnetometer plan, vertical magnetic gradient survey plan, 2 VLF-EM survey plans, a prospecting plan and 2 geological survey plans. The report includes work completed within the Property's boundaries.

42A02SW2004 (1997) – Kalahari Resources Inc.:

Report on the "Meech Lake Group" which consists of four contiguous properties, namely the Meech Lake, Kell's North, Ho Toi and Poker prospects, located in Argyle, McNeil and Robertson townships. The exploration program included line cutting, a geophysical survey (**42A02SW0041**) and ten (10) drill holes totaling 4440 feet. Values up to 1.42% Zn and 0.209 oz./t Au were obtained from quartz veins in the mafic intrusive rocks. The report includes drill logs, sections and plans.

42A02SW0041 (1997) – Kalahari Resources Inc.:

Report on geophysical surveys completed on the property located at the junction of the Argyle, McNeil and Robertson Townships. An induced polarization survey (42,925 km), along with electromagnetic HEM, VLF and magnetic surveys were performed. The report includes several maps and plans. The report includes work completed within the Property's boundaries.

Charlton (1997) – Kalahari Resources Inc. and Golden Pond Resources Ltd. (In-House Report):

This report is a qualifying report on the Meech Lake – Matachewan Prospect. The Property is in the southwest portion of the Abitibi Greenstone belt. It was staked for its polymetallic potential which includes three different types of mineralization found at that point. All three types of mineralization have economic potential. The first is an altered dunite body hosting sulphides which has been sampled several times in the past and given high grade values for copper, nickel, platinum, palladium and gold. The second is the "Waterhole showing" area which hosts altered andesite with pyrite possibly associated with syenite dikes comprising high zinc and gold values from

past drilling. The third type of mineralization is gold with pyrite/pyrrhotite in sheared syenite in the east-central part of the Property. The report includes work completed within the Property's boundaries.

Ploeger, C.J. (2014) - CXS Exploration Services Ltd. (Assessment # pending):

Report on ground magnetometer survey completed on the property in August of 2014. The survey comprised an aggregate of 24.87 line kilometers comprising 1990 magnetometer readings taken at 12.5 m spacing. The report includes a number of maps and images of the interpreted magnetic response over the western part of the Property where the survey was carried out.

Dubois, M. (2014) — Abitibi Geophysics Inc. (Assessment # pending):

Report on TDEM (time-domain electromagnetic) ground geophysical survey completed on the property in September of 2014. The survey covered twelve 50 m lines, spaced 100 m apart, for an aggregate of 6.00 line kilometers. Reading was taken every 25 m. This type of survey is designed to detect and characterize deeply buried conductors. Three (3), ill-defined, weakly conductive, northeast-trending anomalies were detected

2. SURVEY WORK UNDERTAKEN

2.1 PERSONNEL

Bill Bonney of Kirkland Lake, Ontario; Bruce Lavalley and Claudia Moraga both of Britt, Ontario; Ryan Lavalley of Sudbury, Ontario and Jason Ploeger of Larder Lake, Ontario and Mike Rosatelli of Val d'Or Quebec, performed the prospecting traverse and collected GPS waypoint data.

2.2 SURVEY SPECIFICATIONS

The main purpose of the prospecting was to investigate to areas of outcrop exposure for potential mineralization. Rock samples were collected from old trenches crossed during the traverses. These samples were taken for reference purposes.

3. OVERVIEW OF SURVEY RESULTS

ALL SAMPLES WERE TAKEN FOR REFERENCE PURPOSES ONLY! ALL SAMPLES WERE PRESENTED TO CLEGHORN MINERALS LTD.

3.1 DAY-1 – NOVEMBER 22, 2016

Bruce and Ryan Lavalley located access and mobilized to the Meech Lake property. An earlier ice storm had knocked down numerous trees requiring most the day to access. Once on the property, they observed a large impassable, by ATV, cedar swamp.

3.2 DAY-2 – NOVEMBER 23, 2016

An Argo was used to gain access beyond cedar swamp. With the poor access, Claudia and Bill joined Ryan and Bruce in the field.

The vegetation is composed of spruce in this area. The samples were collected in old-trenches of western part of Meech Lake Property around Water Hole Area.

Sample 62801

NAD 83 - Zone 17N
513573E 5327524N



Figure 2: Picture of Sample 62801

Sample 62802

NAD 83 - Zone 17N
513563E 5327516N



Figure 3: Picture of Sample 62802

Sample 62803

NAD 83 - Zone 17N
513635E 5327652N



Figure 3: Picture of Sample 62803

Sample 62804

NAD 83 - Zone 17N
513658E 5327623N



Figure 4: Picture of Sample 62805

Sample 85851

NAD 83 - Zone 17N
513571E 5327456N



Figure 5: Picture of Sample 85851

Sample 85852

NAD 83 - Zone 17N
513577E 5327476N



Figure 6: Picture of Sample 85852

Sample 85853

NAD 83 - Zone 17N
513418E 5327550N



Figure 7: Picture of Sample 85853

Sample 85854

NAD 83 - Zone 17N
513408E 5327539N



Figure 8: Picture of Sample 85854

Sample 85855

NAD 83 - Zone 17N
513401E 5327553N



Figure 9: Picture of Sample 85855

3.3 DAY-2 – NOVEMBER 25, 2016

The vegetation is composed of spruce in this area. The samples were collected in old-trenches of western part of Meech Lake Property around Water Hole, T25 and Kell Area.

Kell	Nad 83 Zone 17N 513236E 5327748N
Waterhole	Nad 83 Zone 17N 513574E 5327472N
T25	Nad 83 Zone 17N 513227E 5327611N

Sample 62805

NAD 83 - Zone 17N
513609E 5327393N



Figure 10: Picture of Sample 62805

Sample 62806

NAD 83 - Zone 17N
513563E 5327436N



Figure 11: Picture of Sample 62806

Sample 62807

NAD 83 - Zone 17N
513567E 5327454N



Figure 12: Picture of Sample 62807

Sample 62808

NAD 83 - Zone 17N
513567E 5327452N



Figure 13: Picture of Sample 62808

Sample 62809

NAD 83 - Zone 17N
513583E 5327472N



Figure 14: Picture of Sample 62809

Sample 62810

NAD 83 - Zone 17N
513574E 5327472N



Figure 15: Picture of Sample 62810

Sample 62811

NAD 83 - Zone 17N
513575E 5327466N



Figure 16: Picture of Sample 62811

Sample 62812

NAD 83 - Zone 17N
513231E 5327745N



Figure 17: Picture of Sample 62812

Sample 62813

NAD 83 - Zone 17N
513231E 5327745N



Figure 18: Picture of Sample 62813

Sample 62814

NAD 83 - Zone 17N
513231E 5327745N



Figure 19: Picture of Sample 62814

Sample 62815

NAD 83 - Zone 17N
513231E 5327745N



Figure 20: Picture of Sample 62815

Sample 85856

NAD 83 - Zone 17N
513293E 5327594N



Figure 21: Picture of Sample 85856

Sample 85857

NAD 83 - Zone 17N
513295E 5327591N



Figure 22: Picture of Sample 85857

Sample 85858

NAD 83 - Zone 17N
513295E 5327593N



Figure 23: Picture of Sample 85858

Sample 85859

NAD 83 - Zone 17N
513288E 5327608N

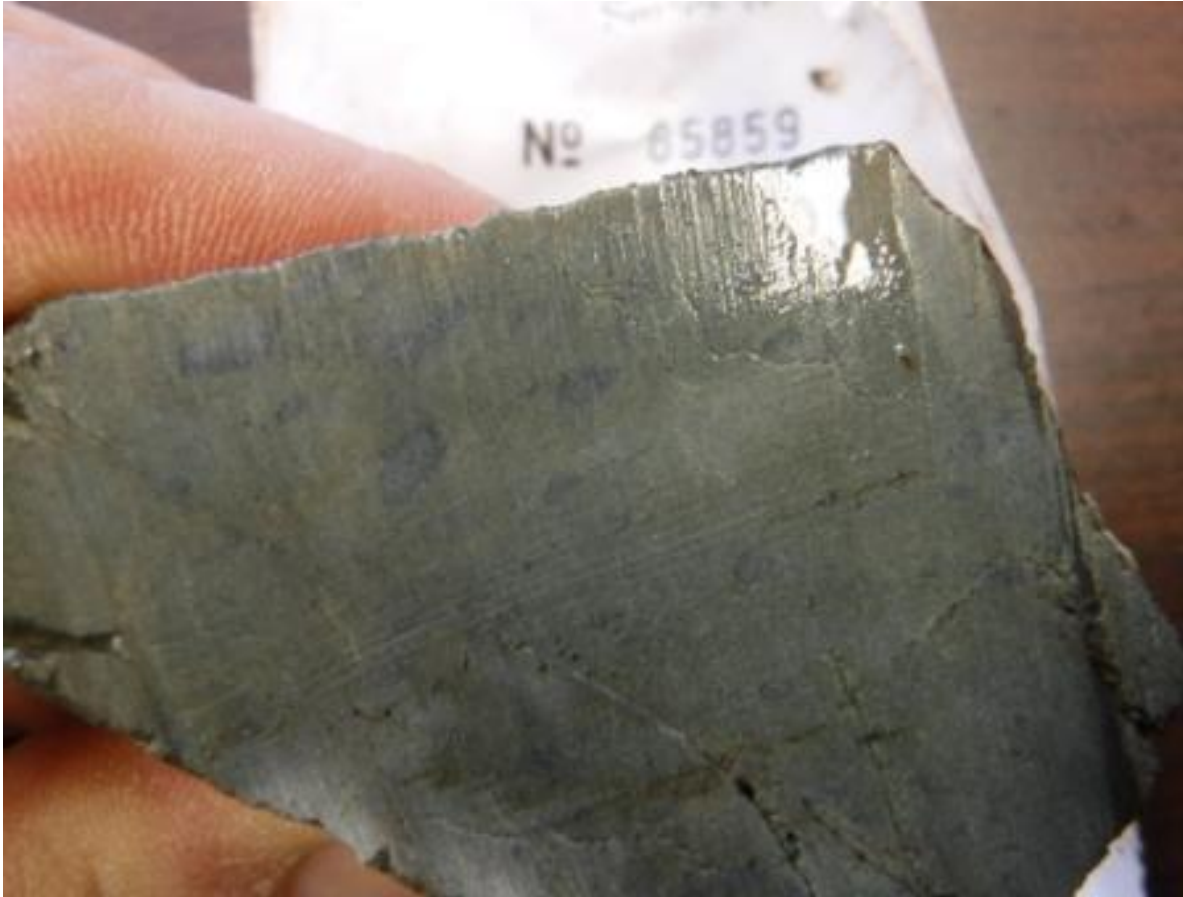


Figure 24: Picture of Sample 85859

Sample 85860

NAD 83 - Zone 17N
513296E 5327608N



Figure 25: Picture of Sample 85860

Sample 85861

NAD 83 - Zone 17N
513294E 5327610N



Figure 26: Picture of Sample 85861

Sample 85862

NAD 83 - Zone 17N
513298E 5327603N



Figure 27: Picture of Sample 85862

Sample 85863

NAD 83 - Zone 17N
513263E 5327631N



Figure 28: Picture of Sample 85863

Sample 85864

NAD 83 - Zone 17N
513227E 5327609N



Figure 29: Picture of Sample 85864

Sample 85865

NAD 83 - Zone 17N
513236E 5327748N



Figure 30: Picture of Sample 85865

3.4 DAY-3 – NOVEMBER 30, 2016

On November 30, Jason Ploeger and Mike Rosatelli occupied the Meech Lake Property. They re-examined the areas which the prospecting crews located for Kell's Showing, Waterhole Showing and T25 and collect more samples at each location.

Sample 85866

NAD 83 - Zone 17N
513575E 5327472N



Figure 31: Picture of Sample 85866

Sample 85867

NAD 83 - Zone 17N
513570E 5327458N



Figure 32: Picture of Sample 85867

Sample 85868

NAD 83 - Zone 17N
513572E 5327453N



Figure 33: Picture of Sample 85868

Sample 85869

NAD 83 - Zone 17N
513235E 5327746N



Figure 34: Picture of Sample 85869

Sample 85870

NAD 83 - Zone 17N
513235E 5327746N



Figure 35: Picture of Sample 85870

Sample 85871

NAD 83 - Zone 17N
513235E 5327746N



Figure 36: Picture of Sample 85871

Sample 85872

NAD 83 - Zone 17N
513235E 5327746N



Figure 37: Picture of Sample 85872

Sample 85873

NAD 83 - Zone 17N
513227E 5327611N



Figure 38: Picture of Sample 85873

3.5 CONCLUSION AND RECOMMENDATIONS

The samples collected exhibit strong mineralization. They visually appear to exhibit characteristics that would be highlighted through an IP survey. I would recommend measuring some physical properties of the samples to better determine the best geophysical method to target these units.

APPENDIX A

STATEMENT OF QUALIFICATIONS

I, C. Jason Ploeger, hereby declare that:

1. I am a professional geophysicist with residence in Larder Lake, Ontario and am presently employed as a Geophysicist and Geophysical Manager of Canadian Exploration Services Ltd. of Larder Lake, Ontario.
2. I am a Practising Member of the Association of Professional Geoscientists, with membership number 2172.
3. I graduated with a Bachelor of Science degree in geophysics from the University of Western Ontario, in London Ontario, in 1999.
4. I have practiced my profession continuously since graduation in Africa, Bulgaria, Canada, Mexico and Mongolia.
5. I am a member of the Ontario Prospectors Association, a Director of the Northern Prospectors Association and a member of the Society of Exploration Geophysicists.
6. I do not have nor expect an interest in the properties and securities of **CLEGHORN MINERALS LTD..**
7. I am responsible for the final processing and validation of the survey results and the compilation of the presentation of this report. The statements made in this report represent my professional opinion based on my consideration of the information available to me at the time of writing this report.



C. Jason Ploeger, P.Geo., B.Sc.
Geophysical Manager
Canadian Exploration Services Ltd.

Larder Lake, ON
February 09, 2017

APPENDIX B

GARMIN GPS MAP 62S



Physical & Performance:	
Unit dimensions, WxHxD:	2.4" x 6.3" x 1.4" (6.1 x 16.0 x 3.6 cm)
Display size, WxH:	1.43" x 2.15" (3.6 x 5.5 cm); 2.6" diag (6.6 cm)
Display resolution, WxH:	160 x 240 pixels
Display type:	transflective, 65-K color TFT
Weight:	9.2 oz (260.1 g) with batteries
Battery:	2 AA batteries (not included); NiMH or Lithium recommended
Battery life:	20 hours
Waterproof:	yes (IPX7)
Floats:	no
High-sensitivity re-	yes

ceiver:	
Interface:	high-speed USB and NMEA 0183 compatible

Maps & Memory:	
Basemap:	yes
Preloaded maps:	no
Ability to add maps:	yes
Built-in memory:	1.7 GB
Accepts data cards:	microSD™ card (not included)
Waypoints/favourites/locations:	2000
Routes:	200
rack log:	10,000 points, 200 saved tracks

Features & Benefits:	
Automatic routing (turn by turn routing on roads):	yes (with optional mapping for detailed roads)
Electronic compass:	yes (tilt-compensated, 3-axis)
Touchscreen:	no
Barometric altimeter:	yes
Camera:	no
<u>Geocaching-friendly:</u>	yes (paperless)
<u>Custom maps compatible:</u>	yes
Photo navigation (navigate to geotagged photos):	yes
Outdoor GPS games:	no

Hunt/fish calendar:	yes
Sun and moon information:	yes
Tide tables:	yes
Area calculation:	yes
Custom POIs (ability to add additional points of interest):	yes
Unit-to-unit transfer (shares data wirelessly with similar units):	yes
Picture viewer:	yes
Garmin Connect™ compatible (online community where you analyze, categorize and share data):	yes

- *Specifications obtained from www.garmin.com*

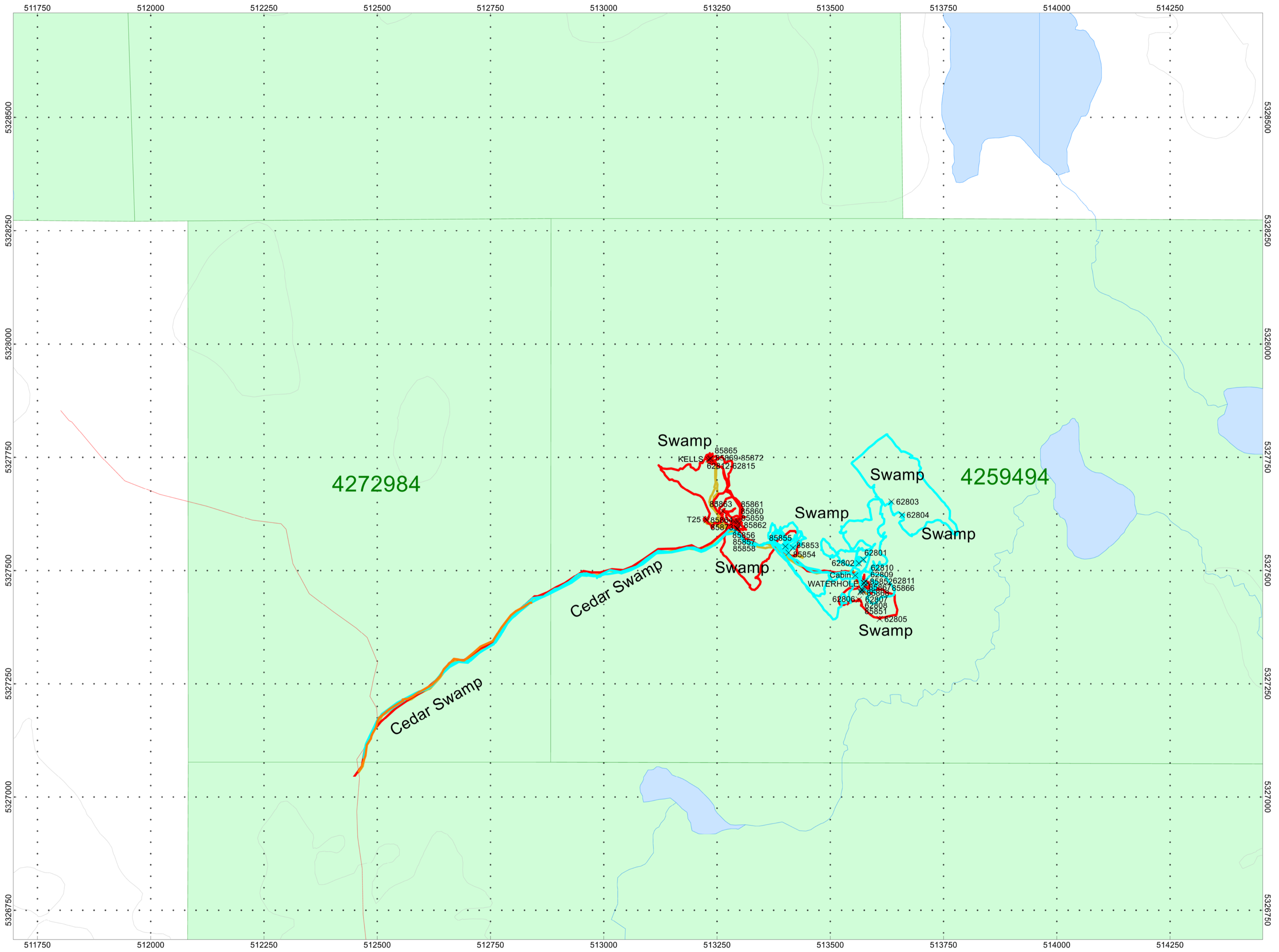
APPENDIX C

LIST OF MAPS (IN MAP POCKET)

Posted Traverse plan maps (1:5000)

- 1) Q2246-CLEGHORN-MEECH LAKE--PROSPECTING

TOTAL MAPS = 1



- X Sample Location
- Waterbody
- Mining Claim
- Prospecting Traverse - November 22, 2016
- Prospecting Traverse - November 23, 2016
- Prospecting Traverse - November 25, 2016
- Prospecting Traverse - November 30, 2016

CLEGHORN MINERALS LTD.

MEECH LAKE PROPERTY
McNeil, Argyle and Robertson Townships, Ontario

PROSPECTING TRAVERSE PLAN MAP

Traverses By: Bruce Lavalley, Ryan Lavalley
 Claudia Moraga, Bill Bonney, Jason Ploeger
 and Michael Rosatelli
 Map Drawn By: C Jason Ploeger, PGeo
 February 2017

CANADIAN EXPLORATION SERVICES LTD.

Drawing: Q2246-Cleghorn-Meech Lake-Traverse

