

We are committed to providing [accessible customer service](#).
If you need accessible formats or communications supports, please [contact us](#).

Nous tenons à améliorer [l'accessibilité des services à la clientèle](#).
Si vous avez besoin de formats accessibles ou d'aide à la communication, veuillez [nous contacter](#).

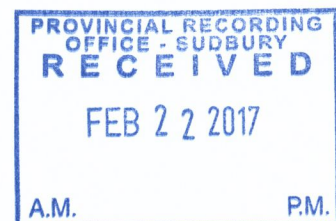
2.57571

**PROSPECTING REPORT FOR WORK COMPLETED
DURING 2016**

Claim # 3002746

**Submitted by James Rastel
Client # 185978**

Submission Date: February 17th 2017



Introduction

Prospector: James Rastel
Assistant prospector: Greg Rastel

Client #: 185978

Address: 301 Superior Street
Wawa, Ontario
P0S 1K0
705-856-9996

Claim Details

Prospecting Area:

Township: Rebazo
Claim Units: 3
Claim #: SSM 3002746
Mining Division: Sault Ste. Marie

General Prospecting Objectives:

- 1) To explore for and then examine placer materials in the prospecting area.
- 2) General exploration of the sites for placer material that has magnetite concentrations
- 3) Obtain samples from promising sites and send them off for analysis

Prospecting Notes:

- 1) None of the samples were concentrated
- 2) Samples were processed by the Saskatchewan Research Council
- 3) Not all samples harvested were sent for assaying.

- 4) I had an assistant to help me with the prospecting
- 5) GPS locations and maps of exploration are located in the appendix

Activity Journal

November 12th and 13th

Line Survey One:

Activity:

- 1) Determine path of line survey #1
- 2) planning, setting up and marking layout for line survey
- 3) conducted line survey
- 4) remove over-burden at marked sample sites
- 5) examine different sand layers
- 6) collection of samples, processing samples and examination of samples

Note: On November 12th I was prospecting on my own and on November 13th my prospecting assistant participated in the prospecting

Description of Samples Taken:

- 1) Line 1, site 1, sample #1: Coarse-grained sand with quartz particles.
- 2) Line 1, site 1, sample #G1: coarse-grained sand of brown colour
- 3) Line 1, site 1, sample #G2: coarse-grained quartz is a dominate part of the sand sample
- 4) Line 1, site 2, sample #G1: coarse-grained placer sample – sand layers were exposed and a sample was taken from the darkest layer
- 5) Line 1, site 3, sample #G1: brown coloured sand

Notes:

1. Bed rock was not encountered
2. distinct sand layers were observed

November 14th, 15th and 16th

Location: Line 2 (see attached map in the appendix)

Activity:

- 1) conducting line survey
- 2) exposed different placer layers
- 3) collection of samples
- 4) examination and processing of the samples
- 5) restore sample collection site

Description of Samples Taken:

- 1) Line 2, Site 1, sample #1: Coarse-grained sand with quartz particles
- 2) Line 2, Site 2, sample #1: Deep brown sand with a quartz particles contained within it
- 3) Line 2, Site 3, sample #1: Fine sand mixture with grey-coloured particles predominant throughout the sample
- 4) Line 2, Site 4, sample #1: medium-grained sample that had pyrite within the sample
- 5) Line 2, Site 4, sample #2: medium-grained sand mixture with grey-coloured particles predominant throughout the sample
- 6) Line 2, Site 5, sample #G1: powder-like sand mixture with white-coloured particles

November 17th and 18th

Location: Multiple sites along the perimeter of the claims on the Michipicoten River

Activity:

- 1) Travel by canoe to get to sand outcrops along the Michipicoten River.
- 2) Exploration of sand outcrops
- 3) Dig to expose the sand layering that the outcrop is composed of
- 4) Collection of samples from sites with a high concentration of magnetite
- 5) assessing retrieved samples

Note: we were targeting sites that had a high concentration of black sands (magnetite), which is often associated with gold bearing materials

Description of Samples Taken:

- 1) River sample #1: black sand with pyrite throughout the sample
- 2) River sample #2: high concentration of magnetite within the sample and with pyrite throughout the sample

November 19th and 20th

Location: Exploration of the South-east corner of the claims on the Michipicoten River Ox-bow

Exploration of the Oxbow gravel flats.

Access was by canoe

Purpose: Look for gold indicators in the very coarse placer materials

Activity:

1. Remove overburden (coarse gravel and stones)
2. Collect placer samples
3. Examine samples for gold indicators
4. Process samples
5. Restoration of dig sites

Notes:

1. Very difficult material to dig through
2. I did not have my assistant on Sunday November 20th
3. Bedrock was not reached

Description of Samples Taken:

1. Oxbow Gravel Flats sample #1: sample from the mid-level of the dig-site. It was difficult to get a sand sample due to the abundance of large gravel stones.
2. Oxbow Gravel Flats sample #2: lower-level of dig-site. This looked like a promising sample, but the assay did not verify this.

Days of Prospecting

- 1) Line 1=2 days
- 2) Line 2 =3 days
- 3) Michipicoten River sites=2 days
- 4) Gravel flats on Michipicoten Oxbow, site two =2 days

Total days of prospecting = 9

Exploration Travel Journal

Vehicle travel expenses:

Line 1= 2 days @ 7 km. per day @ .40 = 5.60

Line 2=3 days@ 7 km. per day @ .40= 8.40

Michipicoten River = 2 days @ 6 km. per day @ .40= 4.80

Oxbox gravel flats= 2 days @ 6 km. per day @ .40= 4.80

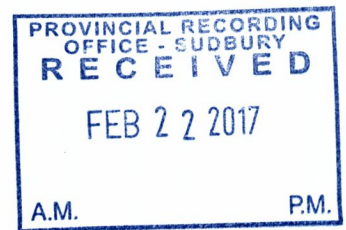
Total Vehicle cost calculated at 40 cents per km. = \$23.60

Appendix

- 1) GPS coordinates for survey work
- 2) Prospecting maps
- 3) Copy of technical assay report from the Saskatchewan Research Council.
- 4) Copy of expense receipts

2.57571

Appendix



Coordinates for Survey Work Done During 2016

1. Sample A: line one – site one – sample #1: Coordinates-47degrees55.843N 84degrees49.670W
2. Sample B: line one – site one – sample #G1: Coordinates-47degrees55.861N 84degrees49.675W
3. Sample C: line one – site one – sample #G2: Coordinates-47degrees55.838N 84degrees49.686W
4. Sample D: line one – site two – sample #G1: Coordinates-47degrees55.861N 84degrees49.473W
5. Sample E: line one – site three – sample #G1: Coordinates-47degrees55.863N 84degrees49.410W
6. Sample F: line two – site one – sample #1: Coordinates-47degrees55.815N 84degrees49.452W
7. Sample G: line two – site two – sample #1: Coordinates-47degrees55.820N 84degrees49.490W
8. Sample H: line two – site three – sample #1: Coordinates-47degrees55.817N 84degrees49.512W
9. Sample I: line two – site four – sample #1: Coordinates-47degrees55.811N 84degrees49.561W
10. Sample J: line two – site four – sample #2: Coordinates-47degrees55.811N 84degrees49.561W
11. Sample K: line two – site five – sample #G1: Coordinates-47degrees55.801N 84degrees49.630W
12. Sample L: river sample - sample #1: Coordinates-47degrees55.298N 84degrees49.724W
13. Sample M: river sample - sample #2: Coordinates-47degrees55.298N 84degrees49.724W
14. Sample N removed
15. Sample O: gravel flats sample - sample #1: Coordinates-47degrees55.568N 84degrees49.288W
16. Sample P: gravel flats sample - sample #2: Coordinates-47degrees55.572N 84degrees49.285W

NOTE:

- Coordinators for start of line one: 47degrees55.841N 84degrees49.691W
- Coordinators for the start of the gravel flats exploration: 47degrees55.600N 84degrees49.299W

SRC GEOANALYTICAL LABORATORIES

Sample Receipt Report

Group # 16-3533

Rastel, Jim

Rastel, Jim

301 Superior St.

Wawa, ON P0S 1K0



Rejects will be stored for 2 years and then discarded. Pulps will be stored at an additional cost.

The following is a record of sample numbers received, sorted in their respective radiation levels.

Basement samples with Radiation Level: Normal

A	B	C	D	E
F	G	H	I	J
K	L	M	O	P

Number of Basement Normal samples was: 15

Total number of samples was: 15

Rastel, Jim
Attention:
PO #/Project:
Samples: 16

SRC Geoanalytical Laboratories
125 - 15 Innovation Blvd., Saskatoon, Saskatchewan, S7N 2X8
Tel: (306) 933-8118 Fax: (306) 933-5656 Email: geolab@src.sk.ca

Report No: G-2016-3533

Date of Report: Dec 22, 2016

Fire Assay

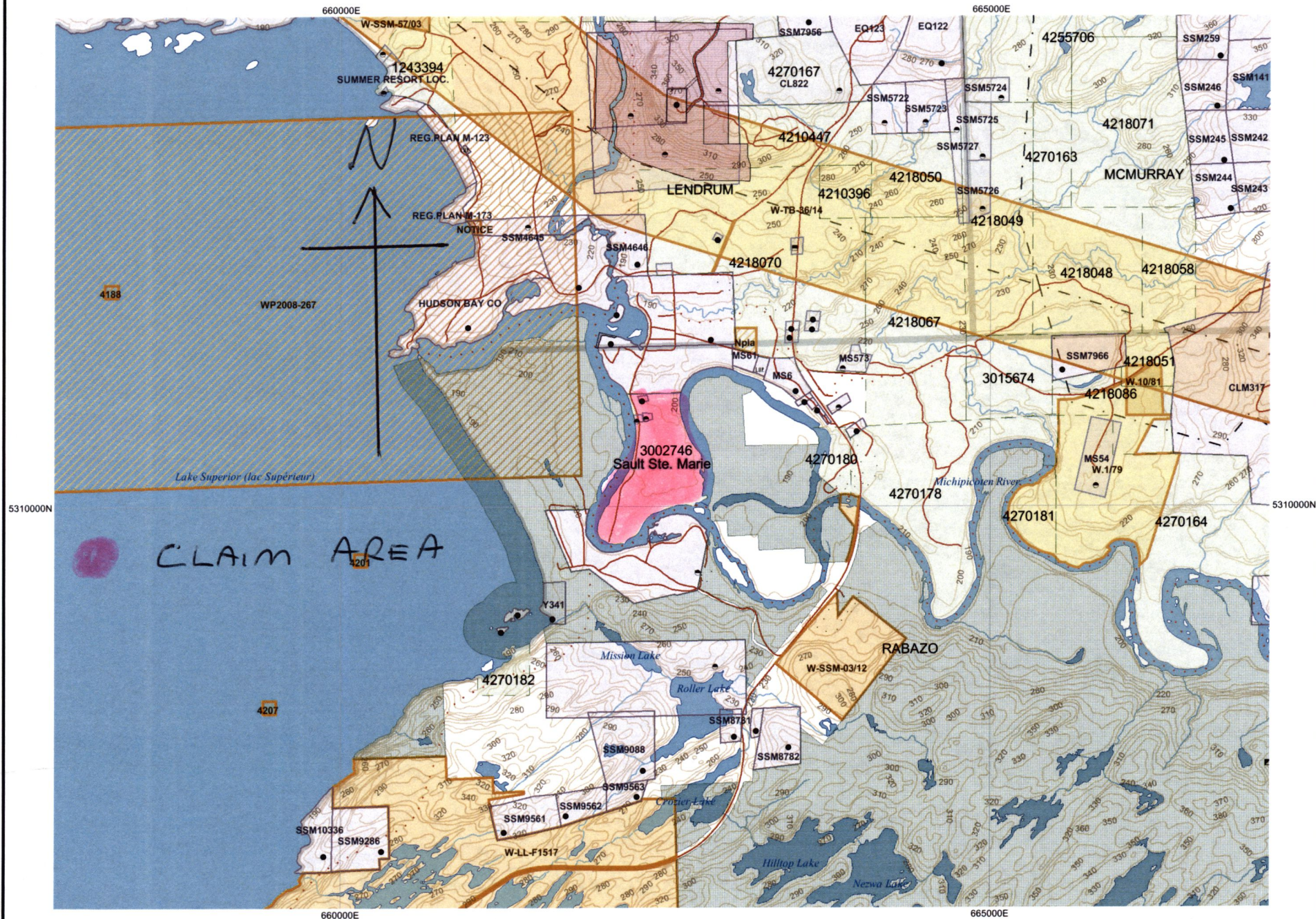
Column Header Details

Au Fire Assay by ICP in ppb (Au)

Sample Number	Au ppb
A	3
B	3
C	4
D	<2
E	2
F	4
G	4
H	2
I	2
J	4
K	3
L	<2
M	3
O	2
P	2
P R	3

Fire Assay: A pulp is subjected to standard fire assaying procedures.

MAP #1



MAP #2

PLAN
M-155

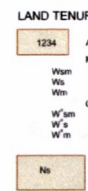
TOWNSHIP / AREA
RABAZO

Mining Division
Land Titles/Registry Division
Ministry of Natural Resources District

Sault S
ALGOM
WAWA

Land Tenure

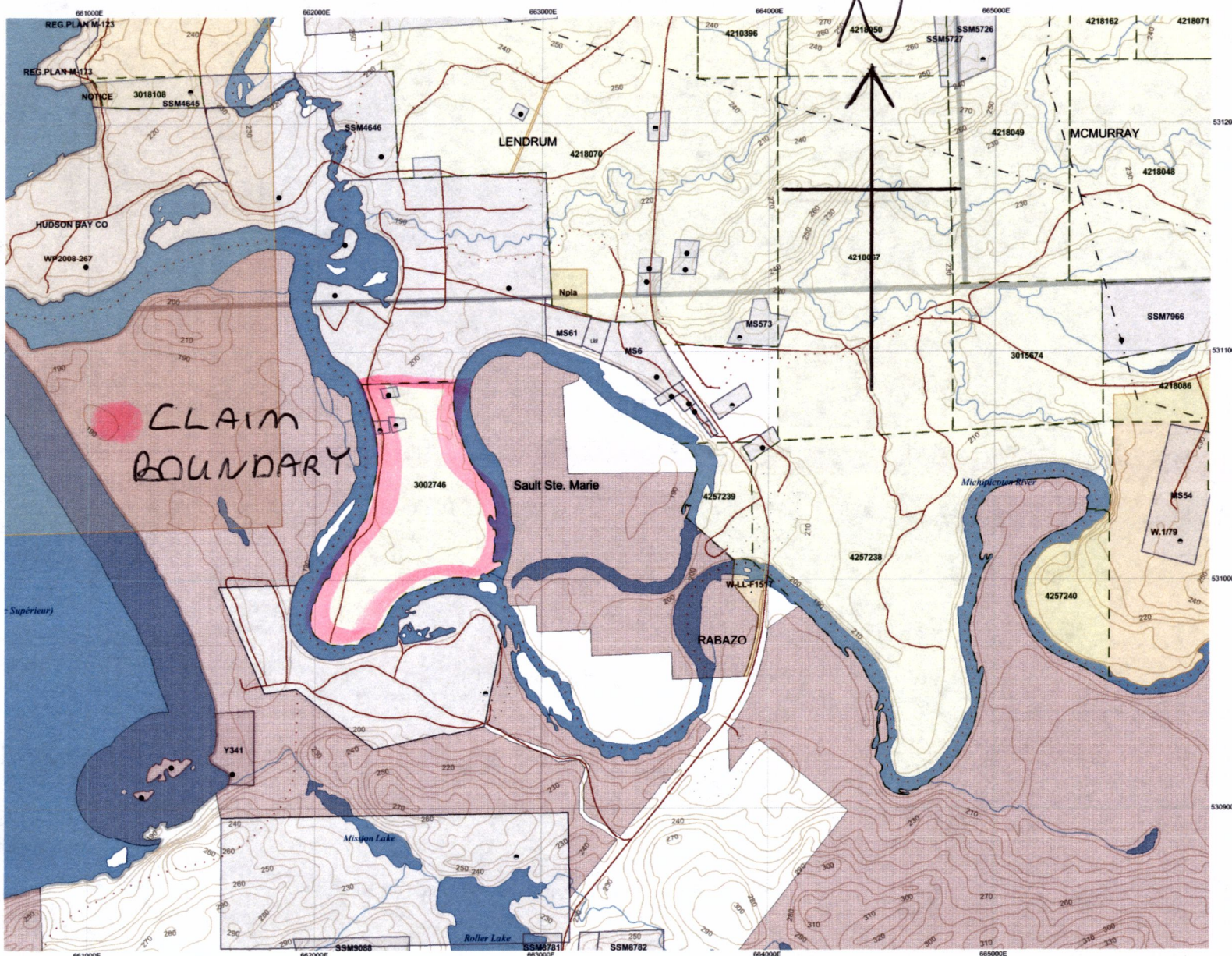
- Freehold Patent
Leasehold Patent
Licence of Occupancy



Identifier	Type	Date	Description
4201	Wsm	Jan 1, 2001	LAND UNDER LAKE SUPERIOR WITHDRAWAL APR 30, 1912 SEE LANDROLL
W-LL-F1517	Wsm	Sep 17, 2004	<= http://www.medin.gov.on.ca/ calmest/index.html?ccid=008&date=008/04/01 > W-LL-F1517 OMT M-S withdrawal S.35 generally depicts areas withdrawn Clov to <= http://www.medin.gov.on.ca/calmest/ Ole.asp > W-SSM-57603 M+S withdrawal 2003 Click to link to S.R.O. record -<= http://www12471.sr.o.gov.on.ca/WL10981/2710101/S.R.O.
W-1979	Ws	Oct 27, 1980	
W/1979	Ws	Jan 1, 1981	

Areas under which special regulation, limitations or conditions exist that affect normal prospecting

Notes	APPLICATION FOR BRO. PUBLIC LANDS ACT. SEE SECTION 2803 AND 302 OF THE MINING ACT
ReCh	SPECIAL CIRCUMSTANCE - AREA UNDER REVIEW. PLEASE CONTACT THE BUREAU OF LAND MANAGEMENT FOR THE STATUS OF THE MINING ACT



This map may not show unregistered land tenure and interests in land including certain patents, leases, easements, right of ways, flooding rights, licences, or other forms of disposition of rights and interest from the Crown. Also certain land tenure and land uses that restrict or prohibit free entry to stake mining claims may not be illustrated.

MAP #3

