

We are committed to providing [accessible customer service](#).
If you need accessible formats or communications supports, please [contact us](#).

Nous tenons à améliorer [l'accessibilité des services à la clientèle](#).
Si vous avez besoin de formats accessibles ou d'aide à la communication, veuillez [nous contacter](#).

ASSESSMENT WORK REPORT

Date: October 24, 2016

Claims Holder: High G Minerals Corporation, Client #304102
200-580 Hornby Street, Vancouver, BC V6C 3B6

Purpose of Report: Re-cutting of Mining Claim Boundary Lines on six claims in Papineau Township (Southern Ontario) near Mattawa, Ontario.

Mining Claims Info: There are a total of six contiguous single unit mining claims each of a 50 acre size of 400 metres by 500 metres. The six claim numbers are as follows: 1214979, 1214980, 1214981, 1214982, 1214983, 1214984.

Access to Mining

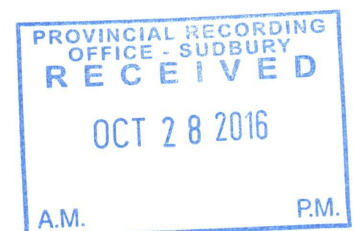
Claims Location: Access obtained by exiting Hwy. 17 at Mattawa, Ontario onto Sturgeon Lake Rd. south approximately 10 kms. to Papineau Road turning right (west) and travelling approximately 3 kms. to the centre of the six mining claims.

Type of

Assessment Work: Re-cutting of Mining Claim Boundary Lines.
Mining Claim boundary lines have never been re-cut since staking in 1996.

Start Date of Work: October 15, 2016

Completion Date: October 24, 2016



Page 2: Assessment Work Report

Actual Work

Performed: The length of all four boundary claim lines for each claim were brushed and marked using florescent flagging tape. Equipment used was machetes, sandvic slasher and prospecting axe. Supplies used was numerous rolls of flagging tape.

Work was performed by three experienced bush and line cutting personnel.

Length of Re-Cut Boundary lines for each claim is 1800 metres less common boundary lines. The overall length is 7200 metres. Lines brushed were approximately 1 metre wide with no damage to merchantable timber.

Prepared By: Byron (Skip) Hamilton, Prospector License D20439
Authorized Agent for High G Minerals Corporation

Worker Signature: R Belanger Ryan Belanger, North Bay, ON
Worker Signature: J Belanger Jean Belanger, Mattawa, ON
Worker Signature: S Hamilton Skip Hamilton, Bruce Mines, ON

Report Signature: [Signature] Date: Oct. 24/16

DAILY DIARY REPORT FOR RE-CUTTING OF CLAIM BOUNDARY LINES ON 6 MINING CLAIMS IN PAPINEAU TOWNSHIP FOR HIGH G MINERALS CORPORATION

Performed from October 15, 2016 to October 24, 2016.

October 15, 2015: Work re-cutting boundary lines on claims 1214984 and 1214982 in Papineau Township for High G Minerals Corp. Brushed and flagged all boundary lines on each claim except for western boundary of claim 1214982 covering approximately 50 acres on each claim and totalling 3600 metres of line work less 500 metres for common boundary for a total of 2600 metres. Elevation change was max 6 metres multiple times with some swampy areas. Equipment used was machete, sandvic, bush axe and a 4x4 pickup truck. Supplies consisted of flagging tape. Start to Finish: 10 hours and 3 workers; Ryan Belanger, North Bay, ON, Jean Belanger, Mattawa, ON, and Skip Hamilton, Bruce Mines, ON.

October 16, 2016: Work re-cutting boundary lines on claims 1214982 and 1214980 in Papineau Township for High G Minerals Corp. Brushed and flagged all boundary lines on claims covering a total of 1800 metres of line work. Much shorter metres re-cut and flagged due to excessive amount of swamp on south and western boundary. Equipment used was machete, sandvic, bush axe and a 4x4 pickup truck. Supplies consisted of flagging tape. Start to finish: 10 hours and 3 workers; Ryan Belanger, North Bay, ON, Jean Belanger, Mattawa, ON and Skip Hamilton, Bruce Mines, ON.

October 22, 2016: Work re-cutting boundary lines on claims 1214979 and 1214981 in Papineau Township for High G Minerals Corp. Brushed and flagged all boundary lines on claims covering a total of 1800 metres of line work. Lesser metres than normal re-cut and flagged due to excessive amount of swamp. Equipment used was machete, sandvic, bush axe and a 4x4 pickup truck. Supplies consisted of flagging tape. Start to finish: 10 hours and 3 workers; Ryan Belanger, North Bay, ON, Jean Belanger, Mattawa ON and Skip Hamilton, Bruce Mines, ON.

October 23, 2016: Work re-cutting boundary line east side of claim 1214981 and boundary lines of claim 1214983 in Papineau Township for High G Minerals Corp. Brushed and flagged all boundary lines covering a total of 1400 metres of line work due to some swamp and a common boundary with 1214981. Equipment used was machete, sandvic, bush axe and a 4x4 pickup truck. Supplies consisted of flagging tape. Start to finish 10 hours and 3 workers; Ryan Belanger, North Bay, ON, Jean Belanger, Mattawa, ON and Skip Hamilton, Bruce Mines, ON.

October 24, 2016: Line re-cutting complete. Assessment Report application and maps completed. Major problems accessing MNDM Claim Maps and assessment reports via internet. Also major interruption in printer services, thereby making it impossible to submit electronically.









Skip Hamilton October 24, 2016



Legend

Administration Boundaries

-  Mining Divisions
-  Resident Geologist District
-  Townships and Areas
-  UTM Grid
-  Geographic Lot Fabric
-  Other Federal Land

Mineral Tenure Grid

- ☐
- OMTG Tenure Grid

Alienations

- Withdrawal
- Notice

Unpatented Claim

-  Active
 Reconciled
 Pending

Disposition

- Disposition

Disposition Symbols

- 📍 Camp
- ❓ Disposition Unknown/Pending
- 🏠 Freehold Patent Mining Rights Only
 - Freehold Patent Surface Rights Only
 - Freehold Patent Surface and Mining Rights
- 🏠 Land Use Permit
 - 🏠 Leasehold Patent Mining Rights Only
 - 🏠 Leasehold Patent Surface Rights Only
 - 🏠 Leasehold Patent Surface and Mining Rights
 - 👉 License of Occupation Mining Use Only
 - 👉 License of Occupation Surface Use Only
 - 👉 License of Occupation Surface and Mining Rights
 - 👉 License of Occupation Uses Not Specified
- 🏠 Order in Council
- 🗑️ Tower
- 📶 WPLA

Geology Layers

-  AMIS Sites
-  AMIS Features
-  Drill Holes
-  Mineral Occurrences



Projection: Web Mercator



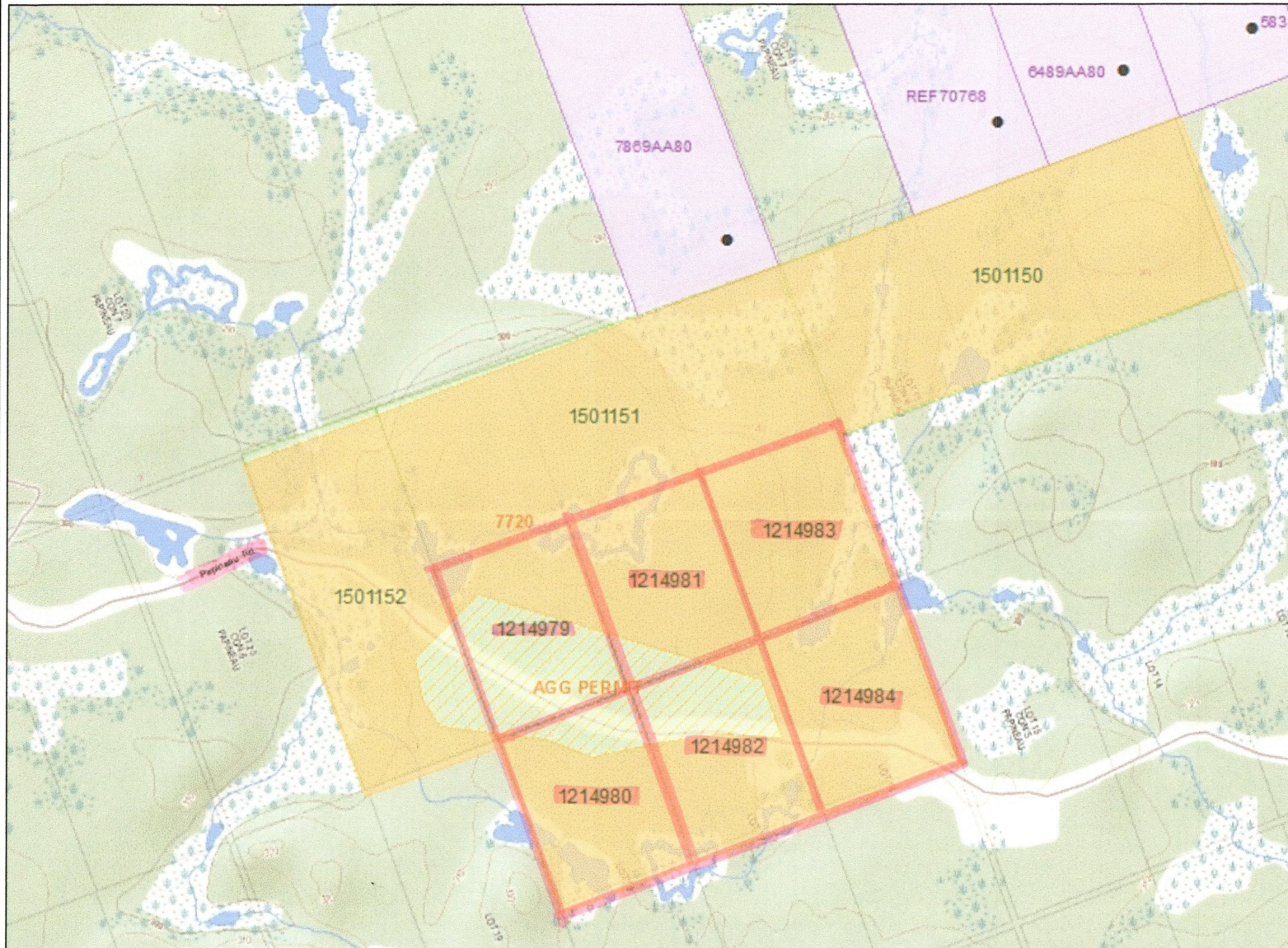
The Ontario Ministry of Northern Development and Mines shall not be liable in any way for the use of, or reliance upon, this map or any information on this map. This map should not be used for: navigation, a plan of survey, routes, nor locations.

© Queen's Printer for Ontario, 2016

Imagery Copyright Notices: Ontario Ministry of Natural Resources and Forestry; NASA Landsat Program; First Base Solutions Inc.; Aéro-Photo (1961) Inc.; DigitalGlobe Inc.; U.S. Geological Survey.

© Copyright for Ontario Parcel data is held by Queen's Printer for Ontario and its licensors and may not be reproduced without permission.





Legend

Administration Boundaries

- Mining Divisions
- Resident Geologist District
- Townships and Areas
- UTM Grid
- Geographic Lot Fabric
- Other Federal Land

Mineral Tenure Grid

- OMTG Tenure Grid

Alienations

- Withdrawal
- Notice

Unpatented Claim

- Active
- Reconciled
- Pending

Disposition

- Disposition

Disposition Symbols

- Camp
- Disposition Unknown/Pending
- Freehold Patent Mining Rights Only
- Freehold Patent Surface Rights Only
- Freehold Patent Surface and Mining Rights
- Land Use Permit
- Leasehold Patent Mining Rights Only
- Leasehold Patent Surface Rights Only
- Leasehold Patent Surface and Mining Rights
- License of Occupation Mining Use Only
- License of Occupation Surface Use Only
- License of Occupation Surface and Mining Rights
- License of Occupation Uses Not Specified
- Order in Council
- Tower
- WPLA

Geology Layers

- AMIS Sites
- AMIS Features
- Drill Holes
- Mineral Occurrences

0 0.9 km

Projection: Web Mercator



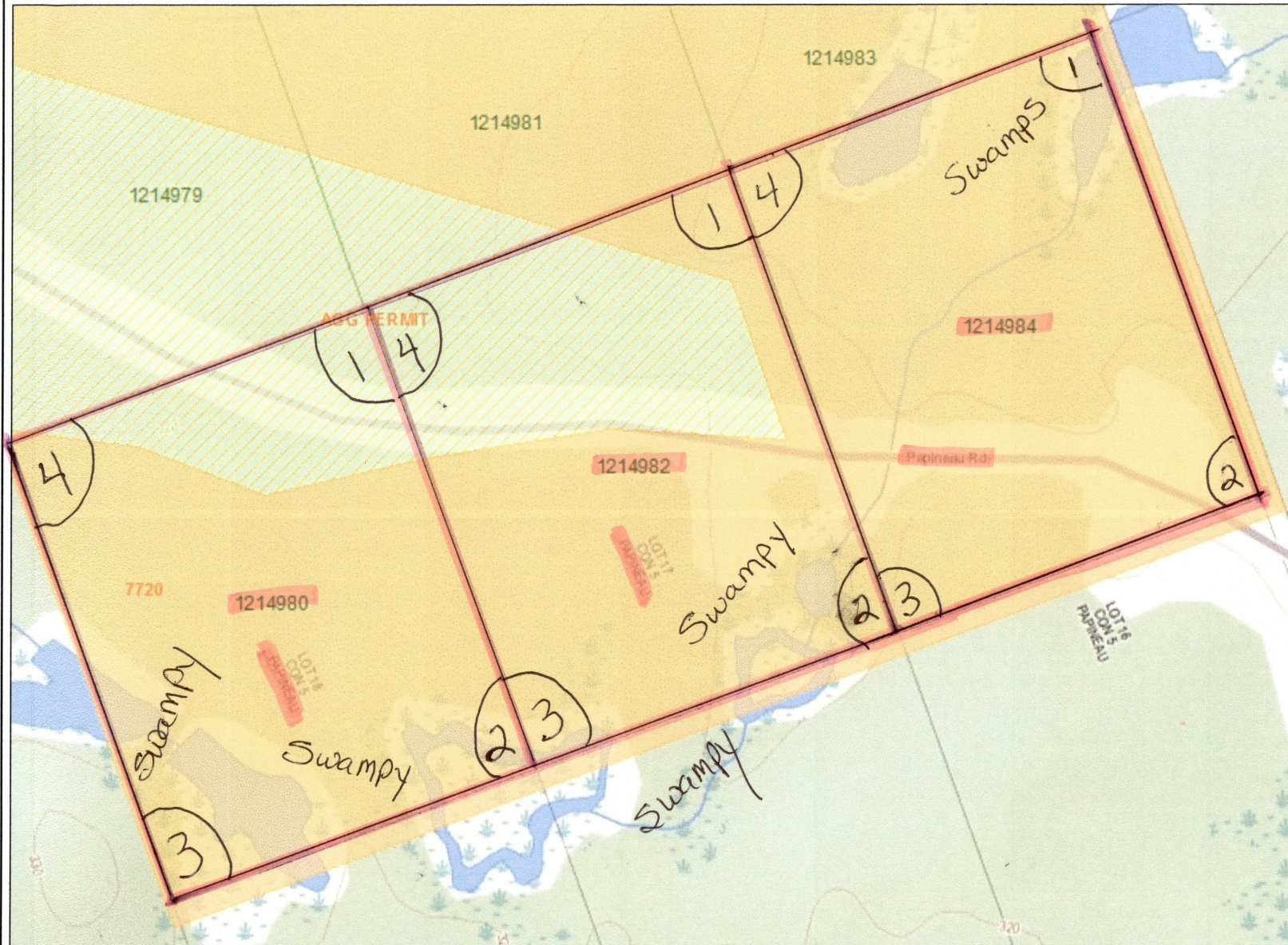
The Ontario Ministry of Northern Development and Mines shall not be liable in any way for the use of, or reliance upon, this map or any information on this map. This map should not be used for: navigation, a plan of survey, routes, nor locations.

© Queen's Printer for Ontario, 2016

Imagery Copyright Notices: Ontario Ministry of Natural Resources and Forestry; NASA Landsat Program; First Base Solutions Inc.; Aéro-Photo (1961) Inc.; DigitalGlobe Inc.; U.S. Geological Survey.

© Copyright for Ontario Parcel data is held by Queen's Printer for Ontario and its licensors and may not be reproduced without permission.





Legend

Administration Boundaries

- Mining Divisions
- Resident Geologist District
- Townships and Areas
- UTM Grid
- Geographic Lot Fabric
- Other Federal Land

Mineral Tenure Grid

- OMTG Tenure Grid

Alienations

- Withdrawal
- Notice

Unpatented Claim

- Active
- Reconciled
- Pending

Disposition

- Disposition

Disposition Symbols

- Camp
- Disposition Unknown/Pending
- Freehold Patent Mining Rights Only
- Freehold Patent Surface Rights Only
- Freehold Patent Surface and Mining Rights
- Land Use Permit
- Leasehold Patent Mining Rights Only
- Leasehold Patent Surface Rights Only
- Leasehold Patent Surface and Mining Rights
- License of Occupation Mining Use Only
- License of Occupation Surface Use Only
- License of Occupation Surface and Mining Rights
- License of Occupation Uses Not Specified
- Order in Council
- Tower
- WPLA

Geology Layers

- AMIS Sites
- AMIS Features
- Drill Holes
- Mineral Occurrences

All Claim
Boundaries
Outlined In
Pink were
Re-Cut

0 0.3 km

Projection: Web Mercator



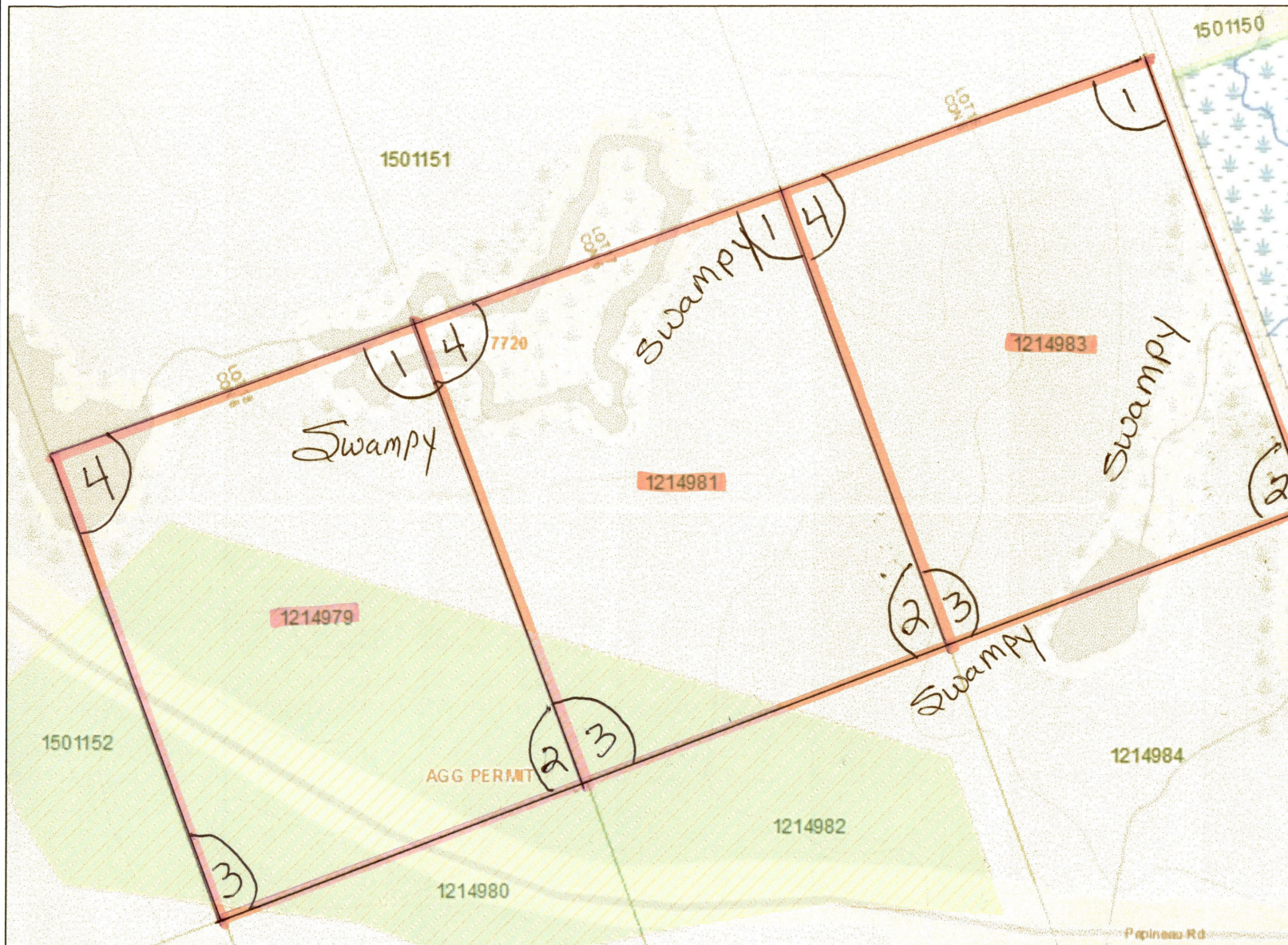
The Ontario Ministry of Northern Development and Mines shall not be liable in any way for the use of, or reliance upon, this map or any information on this map. This map should not be used for: navigation, a plan of survey, routes, nor locations.

© Queen's Printer for Ontario, 2016

Imagery Copyright Notices: Ontario Ministry of Natural Resources and Forestry; NASA Landsat Program; First Base Solutions Inc.; Aéro-Photo (1961) Inc.; DigitalGlobe Inc.; U.S. Geological Survey.

© Copyright for Ontario Parcel data is held by Queen's Printer for Ontario and its licensors and may not be reproduced without permission.





- Legend**
- Administration Boundaries**
- Mining Divisions
 - Resident Geologist District
 - Townships and Areas
 - UTM Grid
 - Geographic Lot Fabric
 - Other Federal Land
- Mineral Tenure Grid**
- OMTG Tenure Grid
- Alienations**
- Withdrawal
 - Notice
- Unpatented Claim**
- Active
 - Reconciled
 - Pending
- Disposition**
- Disposition
- Disposition Symbols**
- Camp
 - Disposition Unknown/Pending
 - Freehold Patent Mining Rights Only
 - Freehold Patent Surface Rights Only
 - Freehold Patent Surface and Mining Rights
 - Land Use Permit
 - Leasehold Patent Mining Rights Only
 - Leasehold Patent Surface Rights Only
 - Leasehold Patent Surface and Mining Rights
 - License of Occupation Mining Use Only
 - License of Occupation Surface Use Only
 - License of Occupation Surface and Mining Rights
 - License of Occupation Uses Not Specified
 - Order in Council
 - Tower
 - WPLA
- Geology Layers**
- AMIS Sites
 - AMIS Features
 - Drill Holes
 - Mineral Occurrences

All Claim
Boundaries
Outlined in
Pink were
Re-cut

0 0.3 km

Projection: Web Mercator

The Ontario Ministry of Northern Development and Mines shall not be liable in any way for the use of, or reliance upon, this map or any information on this map. This map should not be used for: navigation, a plan of survey, routes, nor locations.

© Queen's Printer for Ontario, 2016

Imagery Copyright Notices: Ontario Ministry of Natural Resources and Forestry; NASA Landsat Program; First Base Solutions Inc.; Aéro-Photo (1961) Inc.; DigitalGlobe Inc.; U.S. Geological Survey.

© Copyright for Ontario Parcel data is held by Queen's Printer for Ontario and its licensors and may not be reproduced without permission.

