

We are committed to providing [accessible customer service](#).  
If you need accessible formats or communications supports, please [contact us](#).

Nous tenons à améliorer [l'accessibilité des services à la clientèle](#).  
Si vous avez besoin de formats accessibles ou d'aide à la communication, veuillez [nous contacter](#).

**N.T.S. 31C/11**

**REPORT ON ROCK SAMPLING  
BLACK RIVER NORTH PROPERTY  
GRIMSTHORPE TOWNSHIP, ONTARIO**

**Written by: Robert J. Dillman 8901 Reily Drive  
Mount Brydges, Ontario**

**For: Union Glory Gold Limited**

**October 15, 2016**

## **I N D E X**

	<b>page</b>
<b>Summary</b>	<b>3</b>
<b>Location, Property Ownership, Access</b>	<b>3</b>
<b>Land Status and Topography</b>	<b>8</b>
<b>Regional and Local Geology</b>	<b>8</b>
<b>Economic Mineralization</b>	<b>11</b>
<b>History of Exploration</b>	<b>12</b>
<b>Survey Dates and Personnel</b>	<b>13</b>
<b>Survey Logistics</b>	<b>13</b>
<b>Survey Results</b>	<b>14</b>
<b>Discussion of Results</b>	<b>14</b>
<b>Conclusions and Recommendations</b>	<b>19</b>
<b>References</b>	<b>20</b>
<b>Certificate of Author</b>	<b>21</b>
<b>Figure 1. PROPERTY LOCATION MAP</b>	<b>4</b>
<b>Figure 2. PROPERTY LOCATION MAP</b>	<b>5</b>
<b>Figure 3. CLAIM MAP</b>	<b>6</b>
<b>Figure 4. REGIONAL GEOLOGY MAP</b>	<b>9</b>
<b>Figure 5. PROPERTY GEOLOGY/ COMPILATION MAP</b>	<b>10</b>
<b>Figure 6. CHRISTIE SHOWING</b>	<b>17</b>
<b>Figure 7. BLACK RIVER NORTH SHOWING</b>	<b>18</b>
<b>Table 1. Claim Logistics</b>	<b>7</b>
<b>Table 2. Rock Sample Locations, Descriptions and Assay Results</b>	<b>15</b>
<b>Table 3. Rock Sample Locations, Descriptions and Assay Results &amp; Comparison SGS vs. AGAT</b>	<b>16</b>
<b>APPENDIX</b>	
<b>SGS ASSAY CERTIFICATES</b>	<b>22</b>
<b>AGAT ASSAY CERTIFICATES</b>	<b>28</b>
<b>SGS INVOICE</b>	<b>39</b>
<b>AGAT INVOICE</b>	<b>40</b>
<b>ROCK SAMPLE LOCATION MAP AND ASSAY RESULTS: SCALE 1 :2,500</b>	<b>41</b>

## **Summary**

This report summarizes the results of a rock sampling program on the Black River North Property located in Grimsthorpe Township, Ontario. During program, a total of 20 rock samples were collected from the property by property owners: Robert Dillman and James M. Chard. Sampling was completed in 2 days between July 30, 2016 and July 31, 2016.

Assays on the rock samples returned gold values ranging between 8 ppb to 6,896 ppb. Eight of the rock samples returned gold values greater than 1,000 ppb. The highest gold values were obtained from samples collected from the known gold occurrences: Black River North, Christie and the Pine Showing. Metasedimentary rocks hosting the gold occurrences were found to be slightly anomalous in zinc and vanadium.

## **Location, Property Ownership, Access**

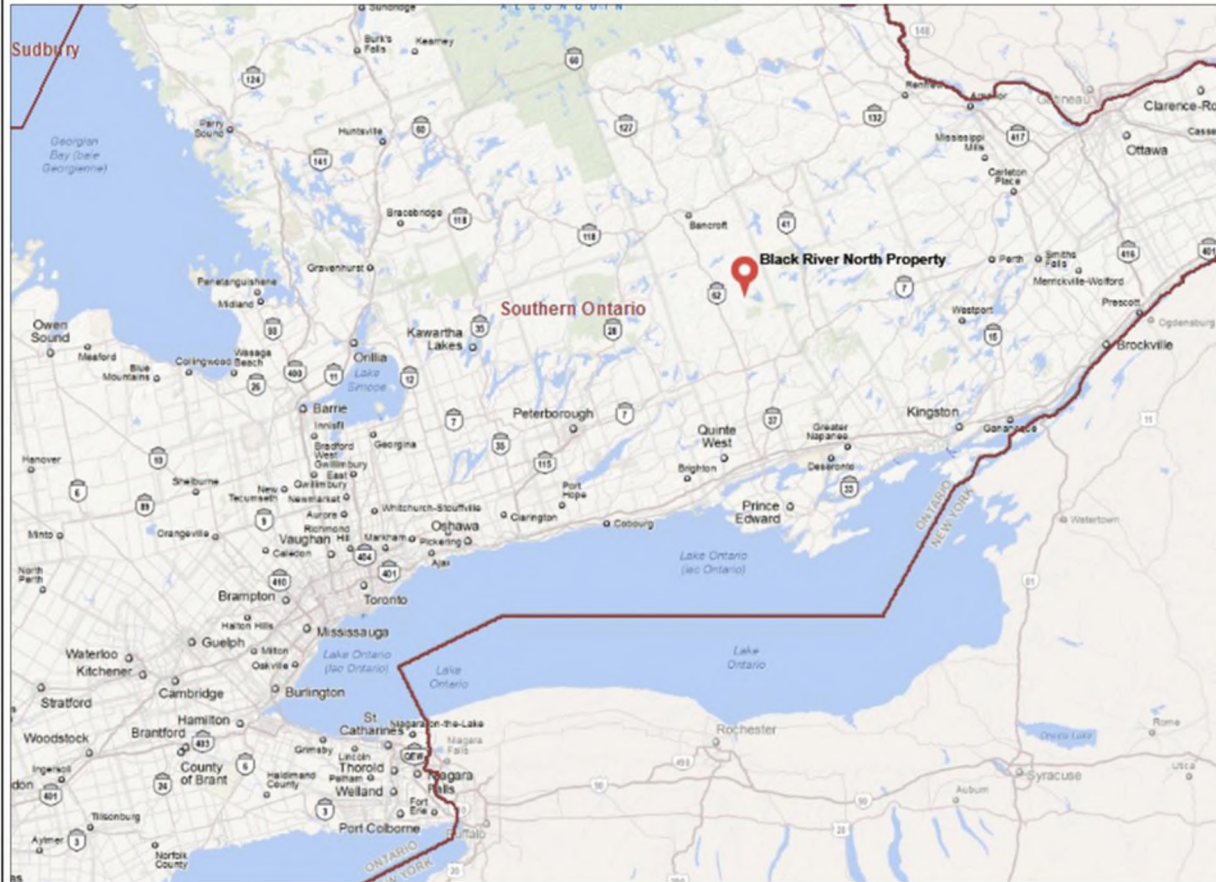
The Black River North Property is located approximately 185 kilometres northeast of Toronto, Ontario, Canada (Figure 1). The property is situated in Grimsthorpe Township which is located in Hastings County (Figure 2).

The property is within the Southern Ontario Mining Division and consists of two contiguous unpatented mining claims covering a total area of 80 hectares (Figure 3). The logistics of the mining claims are summarized in Table 1. Titles to the mining claims comprising the Black River North property are equally held by:

Robert J. Dillman of Mount Brydges, Ontario,  
James M. Chard of Cordova Mines, Ontario

The Black River North Property is currently under option to Union Glory Gold Limited.

The property has good seasonal road access via the Lingham Lake Forest Access Road which crosses through the property. The Lingham Lake Access Road intersects with the Skootamatta Forest Access Road 1.5 km north of the property. The Skootamatta Forest Access Road is also a seasonal road. The Skootamatta Forest Access Road extends from Wadsworth Lake, located on the Weslemkoon Road, to the town of Northbrook on Provincial Highway 41.



### Legend

**Administration Boundaries**

- Mining Divisions
- Resident Geologist District
- Townships and Areas
- UTM Grid
- Geographic Lot Fabric
- Other Federal Land

**Mineral Tenure Grid**

- Oil To Tenure Grid

**Alienations**

- Withdrawal
- Notice

**Unpatented Claim**

- Active
- Reconced
- Pending

**Disposition**

- Disposition

**Disposition Symbols**

- Camp
- Disposition Unknown/Pending
- Freehold Patent Mining Rights Only
- Freehold Patent Surface Rights Only
- Freehold Patent Surface and Mining Rights
- Land Use Permit
- Leasehold Patent Mining Rights Only
- Leasehold Patent Surface Rights Only
- Leasehold Patent Surface and Mining Rights
- License of Occupation Mining Use Only
- License of Occupation Surface Use Only
- License of Occupation Surface and Mining Rights
- License of Occupation Uses Not Specified
- Order in Council
- Tower
- WPLA

**Geology Layers**

- AMIS Sites
- AMIS Features
- Drill Holes
- Mineral Occurrences



Projection: Web Mercator



The Ontario Ministry of Northern Development and Mines shall not be liable in any way for the use of, or reliance upon, this map or any information on this map. This map should not be used for: navigation, a plan of survey, routes, nor locations.

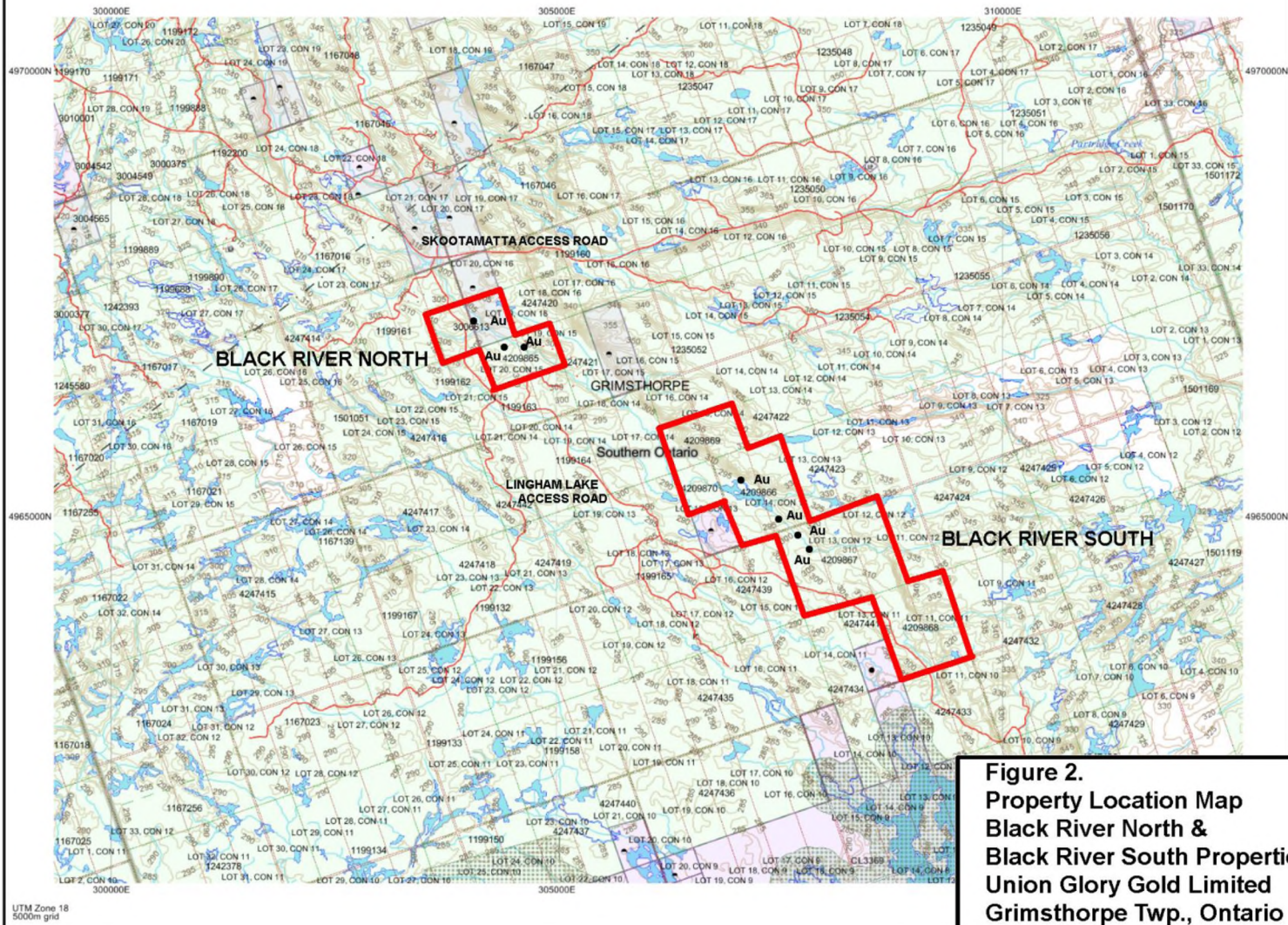
© Queen's Printer for Ontario, 2016

Imagery Copyright Notices: Ontario Ministry of Natural Resources and Forestry; NASA Landsat Program; First Base Solutions Inc.; Aéro-Photo (1961) Inc.; DigitalGlobe Inc.; U.S. Geological Survey.

© Copyright for Ontario Parcel data is held by Queen's Printer for Ontario and its licensors and may not be reproduced without permission.

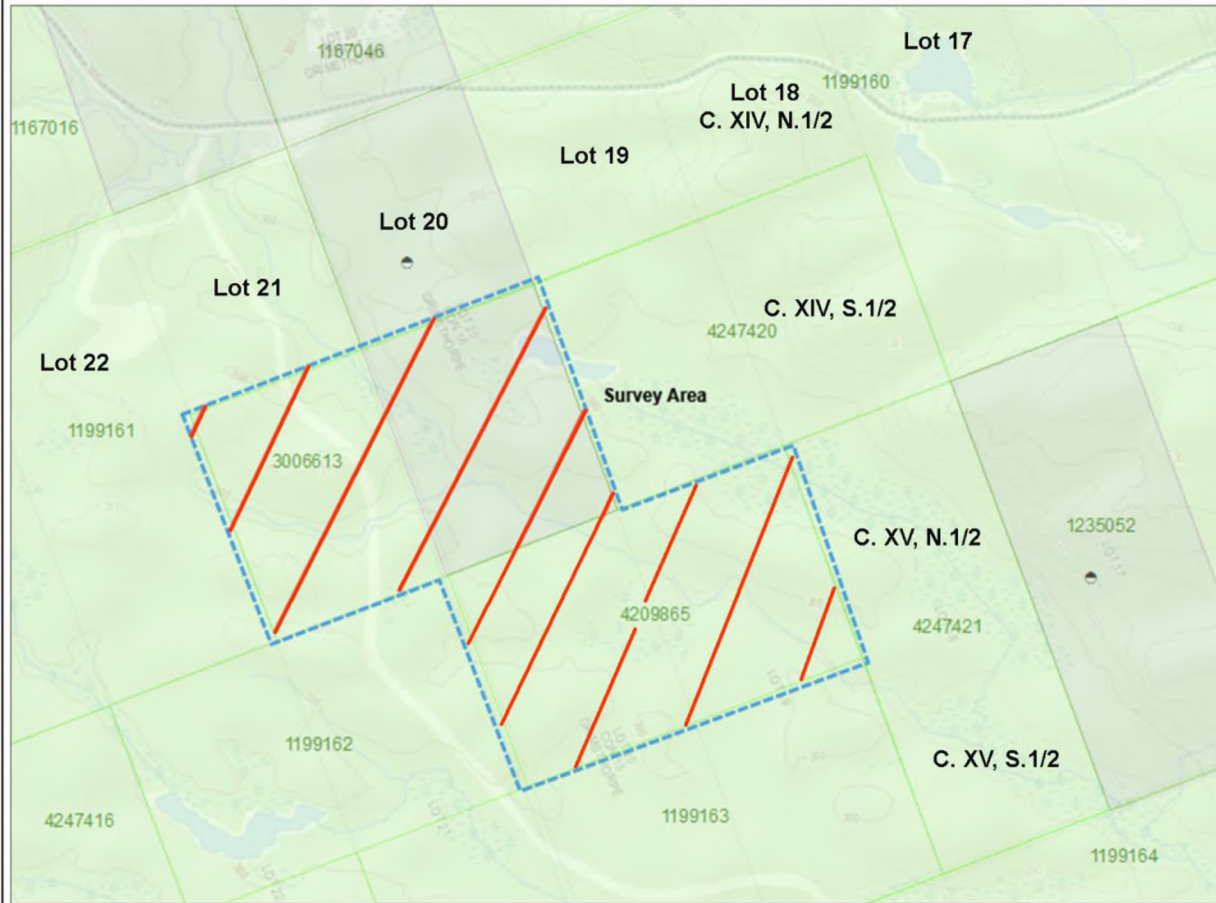






**Figure 2.**  
**Property Location Map**  
**Black River North &**  
**Black River South Properties**  
**Union Glory Gold Limited**  
**Grimsthorpe Twp., Ontario**





### Legend

**Administration Boundaries**

- Mining Divisions
- Resident Geologist District
- Townships and Areas
- UTM Grid
- Geographic Lot Fabric
- Other Federal Land

**Mineral Tenure Grid**

- OM TG Tenure Grid

**Alienations**

- Withdrawal
- Notice

**Unpatented Claim**

- Active
- Reconciled
- Pending

**Disposition**

- Disposition

**Disposition Symbols**

- Camp
- Disposition Unknown/Pending
- Freehold Patent Mining Rights Only
- Freehold Patent Surface Rights Only
- Freehold Patent Surface and Mining Rights
- Land Use Permit
- Leasehold Patent Mining Rights Only
- Leasehold Patent Surface Rights Only
- Leasehold Patent Surface and Mining Rights
- License of Occupation Mining Use Only
- License of Occupation Surface Use Only
- License of Occupation Surface and Mining Rights
- License of Occupation Uses Not Specified
- Order in Council
- Tower
- WPLA

**Geology Layers**

- AMIS Sites
- AMIS Features
- Drill Holes
- Mineral Occurrences



Projection: Web Mercator



The Ontario Ministry of Northern Development and Mines shall not be liable in any way for the use of, or reliance upon, this map or any information on this map. This map should not be used for: navigation, a plan of survey, routes, nor locations.

Imagery Copyright Notices: Ontario Ministry of Natural Resources and Forestry; NASA Landsat Program; First Base Solutions Inc.; Aéro-Photo (1961) Inc.; DigitalGlobe Inc.; U.S. Geological Survey.

© Copyright for Ontario Parcel data is held by Queen's Printer for Ontario and its licensors and may not be reproduced without permission.

© Queen's Printer for Ontario, 2016



## Table 1. Claim Logistics

### Black River North Property Grimsthorpe Twp., Ontario

Claim	Location	Number of Units	Size Hectares	Assessment Due Date	Amount Due	Assessment Bank
3006613	Lot's 20 & 21, Conc. XIV S.1/2	2 units	40 ha	08/ 22/ 2017	\$800	\$2,995
4209865	Lot's 19 & 20, Conc. XV N.1/2	2 units	40 ha	04/ 07/ 2017	\$800	\$0

Title:

50% Robert J. Dillman

8901 Reily Drive Mount Brydges, Ontario N0L 1W0

50% James M. Chard

3495 Country Road 48 Cordova Mines, Ontario K0L 1Z0



## **Land Status and Topography**

Three quarters of the Black River North Property is situated on lands designated as Crown Land (Figure 3). The surface rights of the south half of lot 16, concession XIV, is designated as Surface Rights Only (S.R.O.) and title is held by the Queen of England.

The Black River North Property is at a mean elevation of 300 metres above sea level. The property has gentle topography with elevations ranging approximately 25 metres. The central region of the property is crossed by the Black River. The river drains towards the southeast and is generally rocky and fast flowing. The east side of the river is bounded by northwest-southeast orientated ridges of outcrop. The land west of the river is flat and sections are covered by gravelly till and swamp. Outcrops are less abundant west of the river.

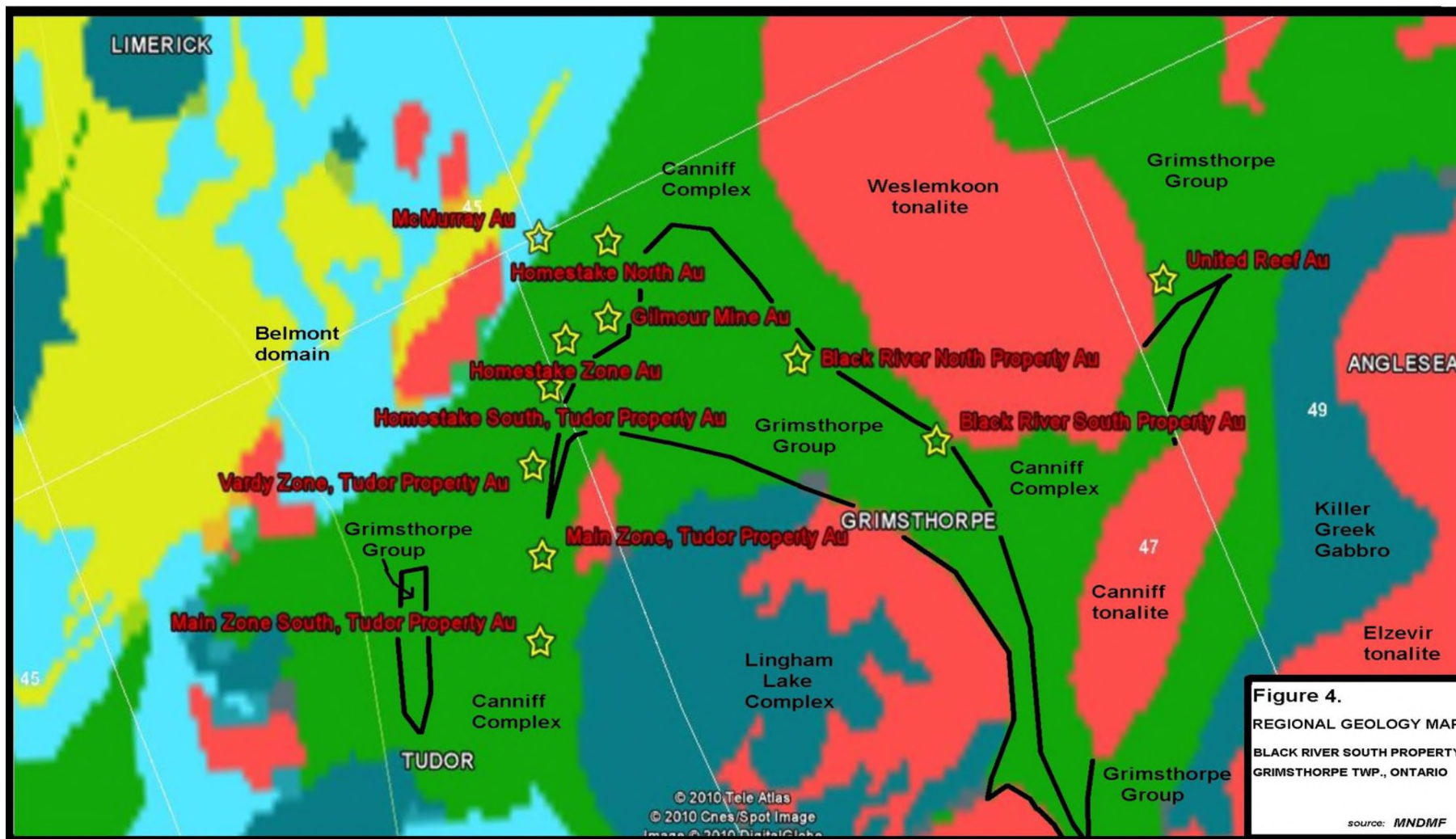
Most of the property is covered by mixed forest dominated by spruce, pine, maple and poplar. Areas east of the river have been partially logged and are crossed by new skidder trails.

## **Regional and Local Geology**

The Black River North Property is located within the Central Metasedimentary Belt of the Grenville Structural Provincial (Figure 4). The property is underlain by Proterozoic geological units belonging to the Grimsthorpe Domain which is dominated by mafic metavolcanic and volcanoclastic metasedimentary rocks older than 1270 Ma (Easton 1992). The Grimsthorpe Domain includes:

- the younger Grimsthorpe Group, consisting mainly of metavolcanic-clastic metasedimentary rocks and minor metavolcanic flows of the Tudor Formation, minimum age 1279 ± 13 Ma (Easton 2004).
- the older Canniff Complex dominated by massive and pillowed tholeiitic metabasalts, metagabbro and metaperidotite.

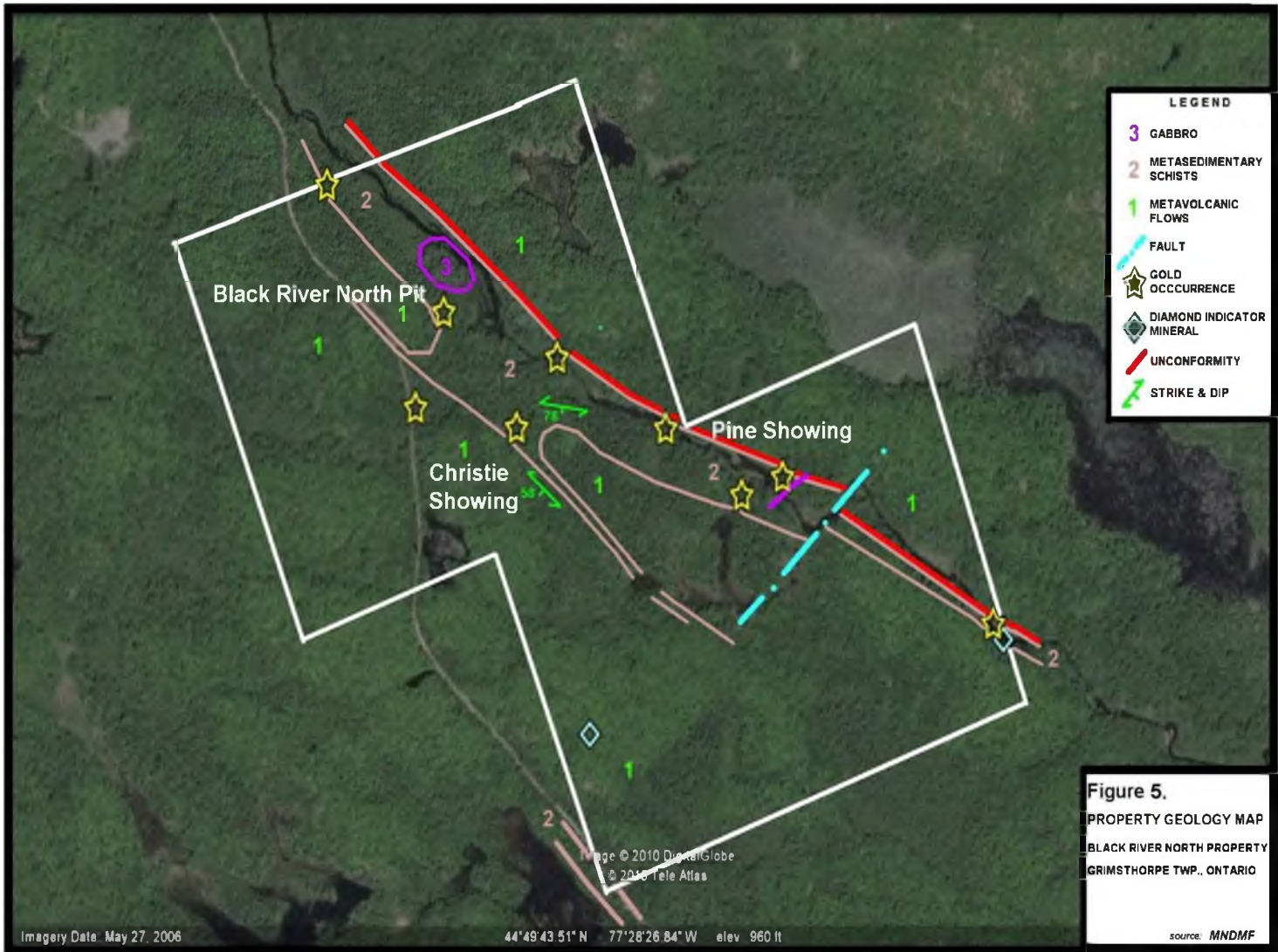
The property is situated over the unconformity between Grimsthorpe Group and the Canniff Complex (Figure 5). The unconformity is juxtaposed with the Black River. Outcrops east of the



**Figure 4.**  
 REGIONAL GEOLOGY MAP  
 BLACK RIVER SOUTH PROPERTY  
 GRIMSTHORPE TWP., ONTARIO  
 source: MNDMF

 **Gold Occurrence**

0 10 km



river consist of metabasalts and metagabbro of the Canniff Complex. Outcrops west of the river consist of northwest trending schistose metasedimentary units and metavolcanic flows of the Grimsthorpe Group.

The Grimsthorpe Domain, notably along the Grimsthorpe-Canniff unconformity has been subjected to a variety of intrusive rocks including:

- northwest trending felsic aplite dikes
- east-west striking gabbroic dikes

The Grimsthorpe Domain in the vicinity to the Black River North Property is sandwiched to the southwest by gabbro and diorite rocks of the Lingham Lake Complex, and to the northeast, by tonalite and granodiorite rocks of the Weslemkoon Tonalite.

Rock units on the property generally trend northwest-southeast and dip vertical to steeply southwest. Units have been subjected to amphibolite-biotite facies metamorphism. Metasedimentary units proximal to the Grimsthorpe-Canniff unconformity are variably sheared by northwest trending structures but are not extensively carbonated like other shear zones in the region. The entire sequence is crossed by a series of young regional faults generally orientated east-west. The younger crossing faults have offset the Grimsthorpe-Canniff unconformity with left-handed displacement.

### **Economic Mineralization**

The gold occurrences on the Black River North Property are part of a series of occurrences found in metasedimentary schists situated along or close to the Grimsthorpe-Canniff unconformity (Figure 5). The gold occurrences occur along a 5 km section of the unconformity. Along this trend, gold occurs in a variety of settings including:

- 1.) deformed and sugary textured quartz veins mineralized with pyrite and arsenopyrite
- 2.) bluish-grey quartz stringers mineralized with pyrite and arsenopyrite
- 3.) silicified and breccia zones mineralized with pyrite and arsenopyrite.
- 4.) white crystalline quartz veins mineralized with pyrite, chlorite and carbonate.

Minerals indicating the presence of potential diamond-bearing rocks have been detected in till and stream sediment samples collected on the property. The minerals include chrome diopside

indicative of a kimberlite source and Zn bearing chromite grains potentially representing Wawa-style lamprophyre. Kimberlites are known to exist in the region.

## **History of Exploration**

In 1941 and 1942, the geology of Grimsthorpe Township and surrounding area was mapped by V. B. Meen on behalf of the Ontario Department of Mines. The area was re-mapped in 1990 by R. M. Easton of the Ontario Geological Survey. Prior to 1991, there is no record of mineral exploration in the area covered by the Black River North Property.

In 1991, gold was discovered along the Black River by the author. Between 1991 and 2003, the author and Jim Chard have completed various low-cost surveys exploring the extent of gold mineralization on the property and to fulfil the rigorous duties of assessment work required to maintain the claims. The surveys include: - prospecting, geological mapping, manual trenching, MMI and "B" horizon soil surveys, heavy mineral sampling, a ground radiometric survey, magnetometer and VLF surveys.

In March 2010, a radiometric survey was completed over the property by Jim Chard. The survey outlined discrete radioactive highs in the vicinity to the gold occurrences on the property. The weak anomalies are believed to be caused by potassic alteration occurring in the vicinity of the gold occurrences.

In 2012, property owners undertook a ground VLF-EM survey over the property. The survey detected several conductive features attributed to sulphide mineralization in metasedimentary schists. Low water in the Black River at the time of the survey lead to the discovery of the Pine Showing consisting of gold mineralization in sheared metasedimentary schists situated close to the unconformity between the Grimsthorpe Group and Caniff Complex.

In July, 2016 and prior to this report, the property owners undertook a ground magnetometer survey over claim 3006613. The survey detected two areas with strong magnetic intensities ranging greater than 60,000 nT. The magnetic anomalies occur over metasedimentary units outcropping in the south and southeast sections of the claim.



## **Survey Dates and Personnel**

Rock samples were collected from the Black River North Property by owners: Robert Dillman and James M. Chard over 2 days between July 30, 2016 and July 31, 2016. Rock samples were collected after a ground magnetometer survey was completed over claim 3006613.

## **Survey Logistics**

A total of 21 rock samples were collected from the property. The locations of the samples and assay results are summarized in Table 2 and Table 3. Sample locations and assay results are also plotted at a scale of 1: 2,500 on the Rock Sample Location Map appended to this report. All samples are considered as “grab samples” and were collected over narrow widths of 0.25 m or less. The UTM coordinates for each sample site was recorded using a Garmin GPS model GPSmap 60Cx. The GPS unit was set to NAD 83, Zone 18.

The rock samples were sent for analysis to SGS Canada Inc. which is located in Lakefield, Ontario. All the samples were assayed for gold using a standard Fire Assay method. At the lab, each sample was weighed and 3.0 kg of each sample was removed and dried at 1,050C. The 3kg pulps were crushed and passed through a 2mm screen until 75% of the material was sieved. From the -2mm fraction, 250g was selected and further pulverized until 85% was passed through a 75 micron screen. From the -75 micron fraction, a 50 g charge was selected for fire assay by lead (Pb) fusion technique. The amount of gold in each sample was measured by Atomic Absorption Spectrometry (AAS). The samples were also assayed for 35 elements using an Exploration Grade, 2 acid digestion method followed by analyses using Inductively Coupled Plasma Optical Emission Spectrometry (ICP-OES).

As a measure for comparison and quality control, four samples were sent for analyses at AGAT Laboratories in Mississauga, Ontario. Three of the samples were duplicates of samples sent to SGS Minerals. All samples sent to AGAT were assayed for gold, platinum and palladium by standard Fire Assay method performed on a 30 g charge followed by analyses using ICP-OES. The samples were also assayed by a multi-element Ore-grade package using a 2 acid digestion method and ICP-OES analyses.

Assay certificates from each laboratory are appended to this report.

## **Survey Results**

Assay results for the rock samples are summarized in Table 2 and Table 3.

High concentrations of gold were detected in 11 samples. Assay results for these samples ranged 160 ppb (0.160 g/t) to 6,896 ppb (6.896 g/t). High concentrations of arsenic were also present in gold bearing samples reflecting the relationship between arsenopyrite and gold on the property. Assay values for arsenic in samples with gold ranged 5,422 ppm (0.54%) to >10,000 (1%).

Assay results for metasedimentary rocks hosting the gold occurrences show elevations in Ba, V and Zn. These rocks generally contain pyrite, pyrrhotite and magnetite.

## **Discussion of Results**

All but one of the rock samples with gold and arsenic mineralization were collected from the known gold occurrences on the property: Black River North, Christie Showing and the Pine Showing (Figure 6, Figure 7). Sample BRN-20, which assayed 160 ppb Au, was collected from an outcrop of silicified metasedimentary rock exposed along the Black River and close to the unconformity between the Grimsthorpe Group and Caniff Complex. The mineralization appears to be on strike from the Pine Showing which is also situated along the river.

As a result of geological work in the vicinity to the Black River North and Christie showing's and from the results of a recent magnetometer survey it is believed that the two gold occurrences are on strike of each other and occur within the same metasedimentary unit. Unfortunately, this can't be confirmed because of overburden between the two showings.

Duplicate samples sent to SGS Canada Inc. and AGAT Laboratories show good correlation in assay results. The assay results from each lab are considered good.

Table 2.  
 Rock Sample Locations, Descriptions and Assay Results  
 Black River North Property, Grimsthorpe Twp., Ontario  
 Union Glory Gold Limited

Assays by: SGS Canada Inc.

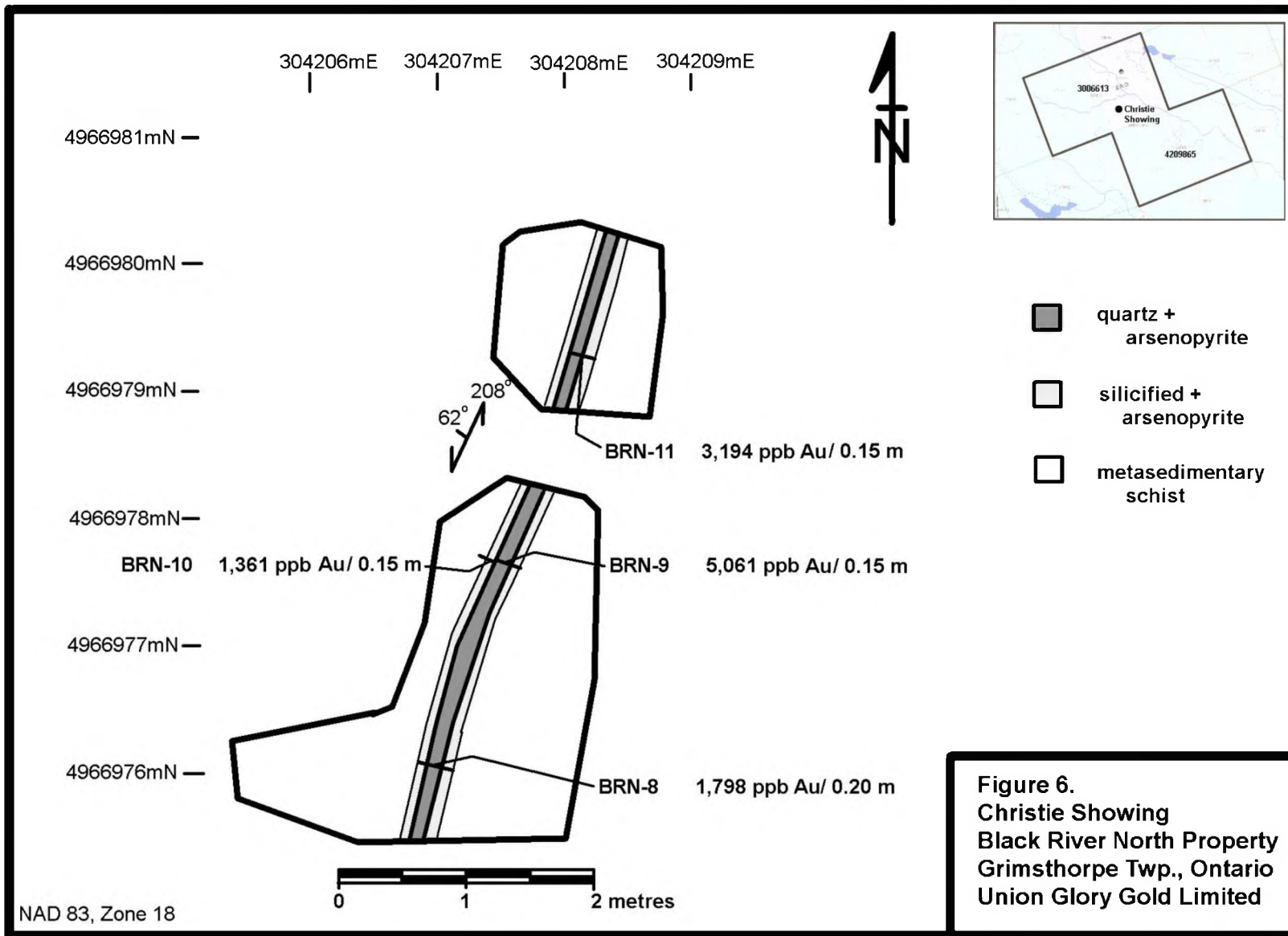
Sample Number	Claim Number	Lot & Conc.	UTM	Sample Type	Width	Description	Au ppb	Ag ppm	As ppm	Ba ppm	V ppm	Zn ppm
BRN-1	3006613	Lot 20 Conc. 16	304108mE 4967520mN	grab	10 cm	5 cm wide quartz vein in sheared-carbonated Basalt, tr. py	79	<2	12	201	174	49
BRN-2	3006613	Lot 20 Conc. 16	304151mE 4967121mN	grab	Float	Quartz float in creek bed on mag high, several pieces, 5% py	11	<2	4	48	20	34
BRN-3	3006613	Lot 20 Conc. 16	304152mE 4967141mN	grab	Float	Same, 20m upstream from BRN-2	27	<2	8	246	104	50
BRN-4	3006613	Lot 20 Conc. 16	304146mE 4967115mN	grab	0.25	pyrite-magnetite iron formation 1 cm wide pyrite stringers in 20% fine magnetite in metasediment. Coincides with strong magnetic anomaly.	8	<2	12	153	191	171
BRN-5	3006613	Lot 20 Conc. 16	304175mE 4967130mN	grab	Float	Float in river, several pieces, +15cm widths, quartz with 5 -10% pyrite.	38	<2	6	31	37	22
BRN-6	4209865	Lot 20 Conc. 15	304482mE 4966957mN	grab	25 cm	Pine Showing, silicified metasediment with arsenopyrite adjacent quartz vein.	302	<2	>10,000	231	129	92
BRN-7	4209865	Lot 20 Conc. 15	304482mE 4966957mN	grab	20 cm	Pine Showing, bluish quartz vein 20 cm wide with 20% arsenopyrite and pyrite.	188	<2	>10,000	101	49	46
BRN-8	3006613	Lot 20 Conc. 16	304207mE 4966976mN	grab	20 cm	Christie Showing, semi-massive arsenopyrite & pyrite in bluish quartz vein and silicified metasediment wallrock.	1,798	<2	>10,000	75	67	26
BRN-9	3006613	Lot 20 Conc. 16	304208mE 4966978mN	grab	15 cm	Christie Showing, semi-massive arsenopyrite & pyrite in bluish quartz vein and silicified metasediment wallrock. 20 m north of BRN-8	5,061	<2	>10,000	75	74	21
BRN-10	3006613	Lot 20 Conc. 16	304207mE 4966978mN	grab	15 cm	Christie Showing, semi-massive arsenopyrite & pyrite in bluish quartz vein and silicified metasediment wallrock. Adjacent BRN-9	1,361	<2	>10,000	114	165	32
BRN-11	3006613	Lot 20 Conc. 16	304210mE 4966979mN	grab	15 cm	Christie Showing, semi-massive arsenopyrite & pyrite in bluish quartz vein and silicified metasediment wallrock. 10- 20% As + py. Strike 208°, dip 62°W	3,194	<2	>10,000	160	116	51
BRN-12	3006613	Lot 20 Conc. 16	304152mE 4967010mN	grab	Float	0.5 x 0.3 x 0.2 m, rusty metasediment, 5-10% py + pyrrhotite +/- As	11	<2	83	211	153	114
BRN-13	3006613	Lot 20 Conc. 16	304131mE 4967041mN	grab	Float	1.0 x 1.0 x 0.4 m, rusty metasediment, 5% py + pyrrhotite +/- As	<5	<2	48	242	212	154
BRN-14	3006613	Lot 20 Conc. 16	304050mE 4967175mN	grab	20 cm	Black River North pit, sheared sucrosic quartz with muscovite-biotite. 20% arsenopyrite	2,814	<2	>10,000	193	90	45
BRN-15	3006613	Lot 20 Conc. 16	304050mE 4967173mN	grab	20 cm	Black River North pit, sheared sucrosic quartz with muscovite-biotite. 20% arsenopyrite. 1 m south of BRN-14.	6,896	<2	>10,000	137	96	34
BRN-16	3006613	Lot 20 Conc. 16	304050mE 4967174mN	grab	20 cm	Black River North pit, sheared sucrosic quartz with muscovite-biotite. 20% arsenopyrite. 1 m south of BRN-15.	2,211	<2	>10,000	61	41	19
BRN-17	3006613	Lot 20 Conc. 16	304053mE 4967174mN	grab	Float	0.4 x 0.3 x 0.3 m, angular, metasediment float on metased outcrop. 3 m east of BRN pit. Siliceous, biotite, 5% disseminated py + po	10	<2	135	208	183	112
BRN-18	3006613	Lot 20 Conc. 16	304050mE 4967172mN	grab	20 cm	Black River North pit, sheared sucrosic quartz with muscovite-biotite. 20% arsenopyrite	3,245	<2	>10,000	59	50	26
BRN-19	3006613	Lot 20 Conc. 16	303963mE 4967406mN	grab	25 cm	Rusty metasedimentary outcrop, 5% py + po	10	<2	143	127	41	31
BRN-20	3006613	Lot 20 Conc. 16	304271mE 4967194mN	grab	25 cm	Rusty, siliceous metasediment with 5% py + As, tr. of magnetite	160	<2	5,422	189	422	97

Table 2.

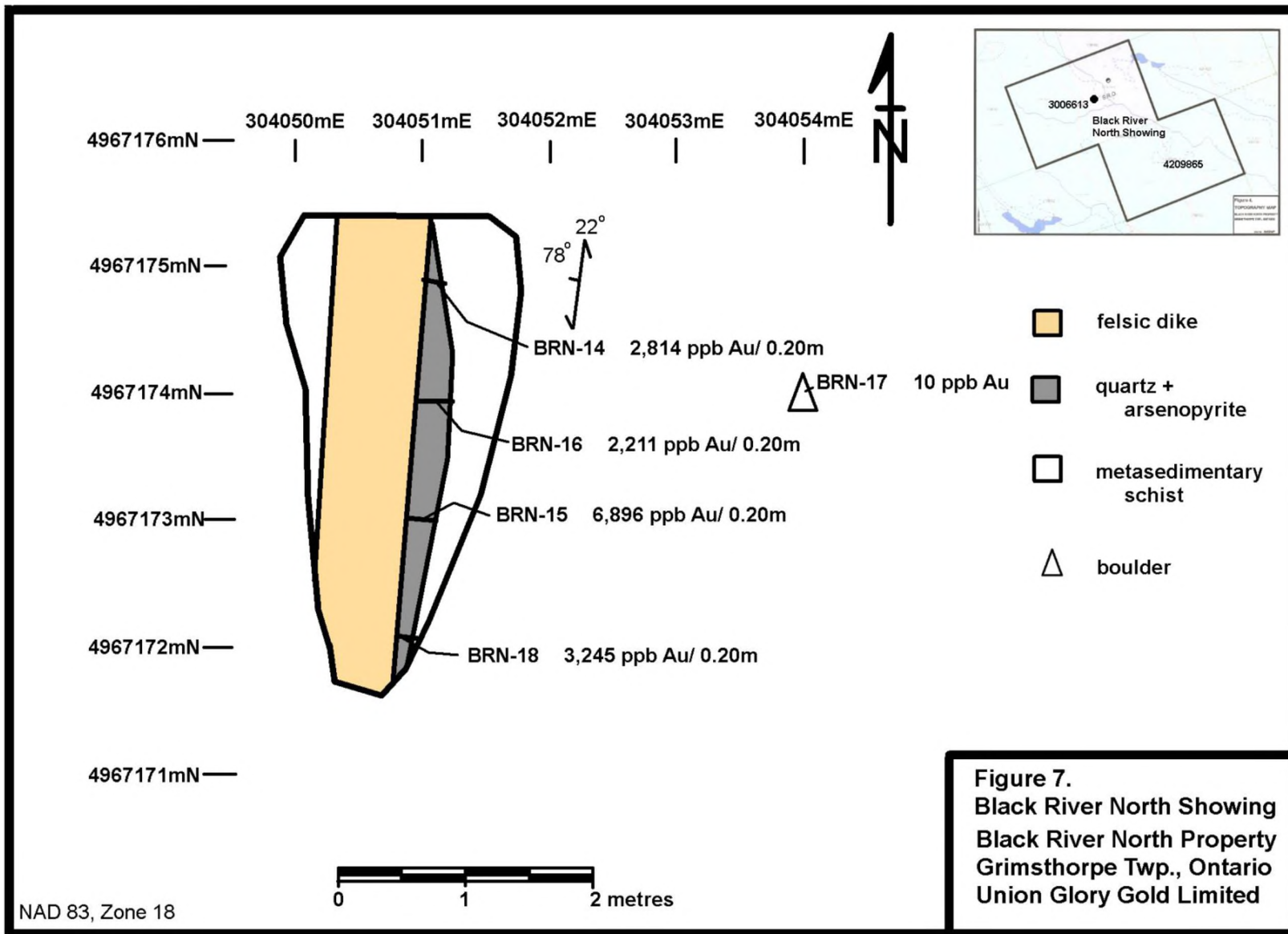
Rock Sample Locations, Descriptions, Assay Results and Comparison  
 Black River North Property & Black River South, Grimsthorpe Twp., Ontario  
 Union Glory Gold Limited

Assays by: AGAT Laboratories

Sample Number	Claim Number	Lot & Conc.	UTM	Sample Type	Width	Description	Au ppb	Ag ppm	As %	Ba ppm	V ppm	Zn ppm	Duplicate Sample
BR-1	3006613	Lot 20 Conc. 16				Black River North pit, sheared sucrosic quartz with muscovite-biotite. 20% arsenopyrite.	5.72	<0.5	7.56	78	80.9	33.2	BRN-15
BR-2	3006613	Lot 20 Conc. 16				Christie Showing, Black River North Property, semi-massive arsenopyrite & pyrite in bluish quartz vein and silicified metasediment wallrock.	1.37	<0.5	3.12	145	118	55.6	BRN-8
BR-3	4209865	Lot 20 Conc. 15				Pine Showing, Black River North Property, bluish quartz vein 20 cm wide with 20% arsenopyrite and pyrite.	0.234	<0.5	2.55	114	57.9	60.4	BRN-7
BR-4	4209866	Lot 14, Conc. 13			0.20 m	Black River South, Black River North Property, sucrosic quartz vein with 10% py.	0.003	<0.5	0.007	30	4.9	<2.0	
BR-5	4209866	Lot 14, Conc. 13			0.20 m	Black River South, bluish quartz stringer and silicified metasediment with 10% arsenopyrite and pyrite.	2.61	1.4	3.30	87	36.0	53.2	
BR-6	4209866	Lot 14, Conc. 13			0.20 m	Black River South, bluish quartz stringer and silicified metasediment with 10% arsenopyrite and pyrite.	2.20	1.8	1.89	96	87.3	29.2	







Comparing the assay results for similar types of gold mineralization found on the Black River North and the Black River South properties, it appears silver is not present with the gold mineralization on the Black River North Property. This was confirmed by both labs. It appears the mineralization on the Black River North Property is a simple gold-arsenic relationship and silver is not present in electrum or accompanying in native form.

A magnetite rich metasedimentary unit was found on line 3+00S, 5+70E. Sample BRN-4, taken of the mineralization assayed 171 ppm Zn and was the best value obtained by this survey. The magnetite mineralization is very fine-grained and accounts for nearly 50% of the sample. The magnetite mineralization coincides with a strong magnetic anomaly detected during the recent ground magnetic survey over claim 3006613.

### **Conclusions and Recommendations**

The recent geological work has found good evidence the Black River North and Christie showings are potentially extensions of the same gold occurrence. Mechanized trenching is recommended to expose both showings to gather additional geological information. A detailed ground magnetometer survey using 25 metre spaced lines should be implemented focusing on the area between the two showings.

Respectfully Submitted,

A handwritten signature in black ink, appearing to read 'R. J. Dillman', is written over a light gray rectangular background.

Robert J. Dillman P.Geo., B.Sc.

October 15, 2016

## References

- Christie, B . J. 1992.** Report on Prospecting, Geological Mapping and Soil Sampling, Dillman: Black River Property, Grimsthorpe Township, Southern Ontario Mining Division, Ontario. Unpublished internal report for Homestake Minerals.
- Dillman, R. J. and Chard, J. M. 2016.** Report on Ground Magnetometer Survey, Claim 3006613, Black River North Property, Grimsthorpe Township, Ontario. Assessment file.
- Dillman, R. J. and Chard, J. M. 2012.** Report on Ground VLF Electromagnetic (EM) Survey, Black River North Property, Grimsthorpe Township, Ontario. Assessment file.
- Dillman, R. J. 2010.** Report on Ground Gamma-Ray Spectrometer Survey, Black River North Property, Grimsthorpe Township, Ontario. Assessment file.
- Dillman, R. J. 2003.** Report on Prospecting and Rock Sampling on the Black River Property, Grimsthorpe Township, Ontario. Assessment file.
- Dillman, R. J. 2003.** Report on Additional Heavy Mineral Sampling on the Black River Property, Grimsthorpe Township, Ontario. Assessment file.
- Dillman, R. J. 2000.** Report on Rock and Heavy Mineral Sampling on the Black River Property, Grimsthorpe Township, Ontario. Assessment file.
- Dillman, R. J. 1992.** Report on Electromagnetic (VLF) and Magnetic Surveys. Black River Property, Grimsthorpe Township, Southern Ontario Mining Division, Ontario. Report for Ontario Prospectors Assistance Program, file no. OP92-235.
- Dillman, R. J. 1991.** Report on Prospecting, Grimsthorpe Township, Hastings County, Ontario. Report for Ontario Prospectors Assistance Program, file no. OP91-535.
- Easton, R. M. and Ford, F. 1990.** Geology of the Grimsthorpe Area: In Summary of Field Work and Other Activities 1990. Ontario Geological Survey, Miscellaneous Paper 151, p. 99-110.
- Meen, V. B. 1942.** Geology of Grimsthorpe-Barrie Area, Ontario Department of Mines, Vol. 51, pt. 4, p. 1-50 (with Map 51d: published 1944).

**Robert J. Dillman P.Geo, B.Sc.**  
**ARJADEE PROSPECTING**  
**8901 Reily Drive, Mount Brydges, Ontario, Canada, N0L1W0**  
**Phone/ fax (519) 264-9278**

**CERIFICATE of AUTHOR**

I, **Robert J. Dillman, Professional Geologist**, do certify that:

1. I am the **President** and the holder of a **Certificate of Authorization** for:

**ARJADEE PROSPECTING**  
**8901 Reily Drive**  
**Mount Brydges, Ontario, Canada**  
**N0L1W0**

2. I graduated in 1991 with a **Bachelor of Science Degree** in **Geology** at the **University of Western Ontario**.

3. I am an active member of:

**Association of Professional Geoscientists of Ontario, APGO**  
**Prospectors and Developers Association of Canada, PDAC**

4. I have been a **licensed Prospector in Ontario** since 1985.

5. I have worked continuously as a **Professional Geologist** for 25 years.


6. Unless stated otherwise, **I am responsible** for the preparation of all sections of the Assessment Report titled:

**REPORT ON ROCK SAMPLING**  
**BLACK RIVER NORTH PROPERTY**  
**GRIMSTHORPE TOWNSHIP, ONTARIO**

**dated, October 15, 2016**

7. I am not aware of any material fact or material change with respect to the subject matter of the Assessment Report that is not contained in the Assessment Report and its omission to disclose makes the Assessment Report misleading.

**Dated this 15th day of October, 2016**

  
Robert James Dillman P.Geo  
Arjadee Prospecting





## Certificate of Analysis

Work Order : LK1600558

[Report File No.: 000007733]

To: **ROBERT DILLMAN**  
8901 REILY DR  
MOUNT BRYDGES ON N0L 1W0

Date: Sep 02, 2016

P.O. No. : -  
Project No. : -  
No. Of Samples : 20  
Date Submitted : Aug 03, 2016  
Report Comprises : Pages 1 to 6  
(Inclusive of Cover Sheet)

**Distribution of unused material:**

To Be Determined:

**Comments:**

Please note: Detection Limit for Cd and Sb increased as indicated due to sample matrix interference

Certified By :

Debbie Waldon  
Project Coordinator

SGS Minerals Services (Lakefield) is accredited by Standards Council of Canada (SCC) and conforms to the requirements of ISO/IEC 17025 for specific tests as indicated on the scope of accreditation to be found at <http://www.scc.ca/en/programs/lab/mineral.shtml>

Report Footer: L.N.R. = Listed not received I.S. = Insufficient Sample  
n.a. = Not applicable - = No result  
\*INF = Composition of this sample makes detection impossible by this method  
M after a result denotes ppb to ppm conversion, % denotes ppm to % conversion  
Methods marked with an asterisk (e.g. \*NAA0BV) were subcontracted  
Elements marked with the @ symbol (e.g. @Cu) denote assays performed using accredited test methods

For solid samples: Unless otherwise noted, all GT\_ tests are reported on a dried at 105°C basis. Other tests are performed on an as received basis unless otherwise indicated. Exceptions will be marked. For example rec (e.g. Cu rec) indicates the results are reported on an as received basis or dry (e.g. Cu dry) indicates the results are reported on a dried basis.

This document is issued by the Company under its General Conditions of Service accessible at [http://www.sgs.com/terms\\_and\\_conditions.htm](http://www.sgs.com/terms_and_conditions.htm). Attention is drawn to the limitation of liability, indemnification and jurisdiction issues defined therein.

**WARNING:** The sample(s) to which the findings recorded herein (the "Findings") relate was (were) drawn and / or provided by the Client or by a third party acting at the Client's direction. The Findings constitute no warranty of the sample's representativity of the goods and strictly relate to the sample (s). The Company accepts no liability with regard to the origin or source from which the sample(s) is/are said to be extracted. The findings report on the samples provided by the client and are not intended for commercial or contractual settlement purposes. Any unauthorized alteration, forgery or falsification of the content or appearance of this document is unlawful and offenders may be prosecuted to the fullest extent of the law.

SGS Canada Inc. Minerals  
185 Concession Street Lakefield ON K0L 2H0 t+1(705) 652-2000 f+1(705) 652-6365 [www.ca.sgs.com](http://www.ca.sgs.com)

Member of the SGS Group (Société Générale de Surveillance)





Element	@Au	@Ag	@Al	@As	@Ba	@Be	@Bi	@Ca
Method	GE_FAA515	GE_ICP12B	GE_ICP12B	GE_ICP12B	GE_ICP12B	GE_ICP12B	GE_ICP12B	GE_ICP12B
Detection Limit	5	2	0.01	3	5	0.5	5	0.01
Units	ppb	ppm	%	ppm	ppm	ppm	ppm	%
BRN-01	79	<2	2.19	12	201	<0.5	6	1.82
BRN-02	11	<2	0.63	4	48	<0.5	<5	0.16
BRN-03	27	<2	1.48	8	246	<0.5	<5	0.27
*Rep BRN-03	24							
BRN-04	8	<2	5.11	12	153	0.5	<5	1.26
*Rep BRN-04		<2	5.14		157	0.6	<5	1.26
*Rep BRN-04				12				
BRN-05	38	<2	0.90	6	31	<0.5	<5	0.18
BRN-06	302	<2	2.84	>10000	231	<0.5	<5	2.30
BRN-07	188	<2	1.12	>10000	101	<0.5	<5	1.68
BRN-08	1798	<2	1.78	>10000	75	<0.5	5	0.30
BRN-09	5061	<2	1.73	>10000	75	<0.5	10	0.19
BRN-10	1361	<2	1.76	>10000	114	<0.5	6	0.31
BRN-11	3194	<2	3.28	>10000	160	<0.5	7	0.58
BRN-12	11	<2	5.23	83	211	0.7	<5	0.79
BRN-13	<5	<2	7.95	48	242	0.6	<5	1.03
BRN-14	2814	<2	2.10	>10000	193	<0.5	10	0.20
BRN-15	6896	<2	1.90	>10000	137	<0.5	19	0.09
BRN-16	2211	<2	1.01	>10000	61	<0.5	7	0.09
BRN-17	10	<2	5.43	135	208	<0.5	<5	0.42
BRN-18	3245	<2	0.91	>10000	59	<0.5	10	0.08
BRN-19	10	<2	1.81	143	127	<0.5	<5	0.34
BRN-20	160	<2	2.17	5422	189	<0.5	5	0.19
*Dup BRN-08	2165	<2	1.85	>10000	73	<0.5	5	0.32

This document is issued by the Company under its General Conditions of Service accessible at [http://www.sgs.com/terms\\_and\\_conditions.htm](http://www.sgs.com/terms_and_conditions.htm). Attention is drawn to the limitation of liability, indemnification and jurisdiction issues defined therein.

**WARNING:** The sample(s) to which the findings recorded herein (the "Findings") relate was (were) drawn and / or provided by the Client or by a third party acting at the Client's direction. The Findings constitute no warranty of the sample's representativity of the goods and strictly relate to the sample (s). The Company accepts no liability with regard to the origin or source from which the sample(s) is/are said to be extracted. The findings report on the samples provided by the client and are not intended for commercial or contractual settlement purposes. Any unauthorized alteration, forgery or falsification of the content or appearance of this document is unlawful and offenders may be prosecuted to the fullest extent of the law.

SGS Canada Inc. Minerals  
185 Concession Street Lakefield ON K0L 2H0 t+1(705) 652-2000 f+1(705) 652-6365 [www.ca.sgs.com](http://www.ca.sgs.com)

Member of the SGS Group (Société Generale de Surveillance)



Final : LK1600558 Order:  
Report File No. 0000007733

Page 3 of 6

Element Method Detection Limit Units	@Cd	@Co	@Cr	@Cu	@Fe	@Hg	@K	@La
	GE_ICP12B	GE_ICP12B	GE_ICP12B	GE_ICP12B	GE_ICP12B	GE_ICP12B	GE_ICP12B	GE_ICP12B
	40 ppm	1 ppm	1 ppm	0.5 ppm	0.01 %	1 ppm	0.01 %	0.5 ppm
BRN- 01	<40	35	125	325	6.00	1	0.48	8.3
BRN- 02	<40	6	226	43.0	1.68	<1	0.26	1.9
BRN- 03	<40	22	275	169	4.71	<1	0.71	6.9
BRN- 04	<40	29	262	61.6	6.12	2	1.68	18.8
*Rep BRN- 04	<40	28	260	60.4	6.13	<1		18.8
*Rep BRN- 04							1.70	
BRN- 05	<40	7	230	23.6	2.38	<1	0.06	2.6
BRN- 06	<40	24	192	29.6	5.33	<1	1.68	21.0
BRN- 07	<40	13	224	13.6	3.00	<1	0.51	8.1
BRN- 08	<40	63	204	49.7	6.09	<1	0.62	13.3
BRN- 09	<40	88	223	130	9.08	<1	0.51	5.7
BRN- 10	<40	103	259	91.8	6.59	<1	0.91	16.3
BRN- 11	<40	137	288	47.8	7.60	<1	1.35	9.6
BRN- 12	<40	27	299	87.4	7.67	2	2.62	23.9
BRN- 13	<40	22	91	44.6	7.79	<1	2.21	7.4
BRN- 14	<40	82	234	40.1	6.72	<1	1.02	15.7
BRN- 15	<40	82	220	41.0	9.53	<1	0.63	6.2
BRN- 16	<40	78	230	50.9	4.86	<1	0.37	8.2
BRN- 17	<40	24	246	113	7.84	<1	2.22	12.8
BRN- 18	<40	35	239	22.2	6.41	2	0.39	6.5
BRN- 19	<40	6	98	23.6	2.59	<1	0.96	16.6
BRN- 20	<40	43	226	124	6.80	<1	1.03	32.2
*Dup BRN- 08	<40	65	225	50.3	6.16	<1	0.62	14.1

This document is issued by the Company under its General Conditions of Service accessible at [http://www.sgs.com/terms\\_and\\_conditions.htm](http://www.sgs.com/terms_and_conditions.htm). Attention is drawn to the limitation of liability, indemnification and jurisdiction issues defined therein.

**WARNING:** The sample(s) to which the findings recorded herein (the "Findings") relate was (were) drawn and / or provided by the Client or by a third party acting at the Client's direction. The Findings constitute no warranty of the sample's representativity of the goods and strictly relate to the sample (s). The Company accepts no liability with regard to the origin or source from which the sample(s) is/are said to be extracted. The findings report on the samples provided by the client and are not intended for commercial or contractual settlement purposes. Any unauthorized alteration, forgery or falsification of the content or appearance of this document is unlawful and offenders may be prosecuted to the fullest extent of the law.

SGS Canada Inc. Minerals  
185 Concession Street Lakefield ON K0L 2H0 t+1(705) 652-2000 f+1(705) 652-6365 [www.ca.sgs.com](http://www.ca.sgs.com)

Member of the SGS Group (Société Générale de Surveillance)



Final : LK1600558 Order:

Page 4 of 6

Report File No. 0000007733

Element Method Detection Limit Units	@Li	@Mg	@Mn	@Mo	@Na	@Ni	@P	@Pb
	GE_ICP12B 1 ppm	GE_ICP12B 0.01 %	GE_ICP12B 2 ppm	GE_ICP12B 1 ppm	GE_ICP12B 0.01 %	GE_ICP12B 1 ppm	GE_ICP12B 0.01 %	GE_ICP12B 2 ppm
BRN- 01	18	1.68	1210	3	0.08	31	0.12	3
BRN- 02	6	0.29	114	11	0.05	18	0.01	3
BRN- 03	17	0.71	207	11	0.06	64	0.12	9
BRN- 04	29	3.28	598	6	0.24	91	0.14	<2
*Rep BRN- 04	29	3.32	604	5	0.25			<2
*Rep BRN- 04						88	0.14	
BRN- 05	11	0.43	388	4	0.04	10	0.01	<2
BRN- 06	24	2.04	660	7	0.13	54	0.11	<2
BRN- 07	10	1.02	624	10	0.05	27	0.07	<2
BRN- 08	12	0.74	167	14	0.14	40	0.04	<2
BRN- 09	14	0.64	142	16	0.08	82	0.06	3
BRN- 10	12	0.94	162	17	0.12	60	0.11	<2
BRN- 11	16	1.27	256	16	0.26	45	0.05	<2
BRN- 12	28	2.59	587	9	0.23	102	0.10	<2
BRN- 13	36	4.83	607	5	0.26	47	0.14	<2
BRN- 14	15	1.01	256	14	0.08	46	0.07	<2
BRN- 15	17	0.76	149	7	0.04	45	0.03	<2
BRN- 16	8	0.39	104	6	0.04	40	0.04	<2
BRN- 17	32	3.31	518	7	0.14	63	0.08	<2
BRN- 18	8	0.41	150	6	0.04	23	0.03	<2
BRN- 19	16	0.92	181	4	0.09	9	0.12	<2
BRN- 20	16	1.06	264	10	0.09	106	0.08	6
*Dup BRN- 08	12	0.73	167	10	0.16	42	0.04	<2

This document is issued by the Company under its General Conditions of Service accessible at [http://www.sgs.com/terms\\_and\\_conditions.htm](http://www.sgs.com/terms_and_conditions.htm). Attention is drawn to the limitation of liability, indemnification and jurisdiction issues defined therein.

**WARNING:** The sample(s) to which the findings recorded herein (the "Findings") relate was (were) drawn and / or provided by the Client or by a third party acting at the Client's direction. The Findings constitute no warranty of the sample's representativity of the goods and strictly relate to the sample (s). The Company accepts no liability with regard to the origin or source from which the sample(s) is/are said to be extracted. The findings report on the samples provided by the client and are not intended for commercial or contractual settlement purposes. Any unauthorized alteration, forgery or falsification of the content or appearance of this document is unlawful and offenders may be prosecuted to the fullest extent of the law.

SGS Canada Inc. Minerals  
185 Concession Street Lakefield ON K0L 2H0 t+1(705) 652-2000 f+1(705) 652-6365 [www.ca.sgs.com](http://www.ca.sgs.com)

Member of the SGS Group (Société Générale de Surveillance)



Element Method Detection Limit Units	@S GE_ICP12B 0.01 %	@Sb GE_ICP12B 20 ppm	@Sc GE_ICP12B 0.5 ppm	@Sn GE_ICP12B 10 ppm	@Sr GE_ICP12B 5 ppm	@Tl GE_ICP12B 0.01 %	@V GE_ICP12B 1 ppm	@W GE_ICP12B 10 ppm
BRN-01	1.89	<20	16.8	<10	29	0.07	174	<10
BRN-02	0.46	<20	1.5	<10	6	0.03	20	<10
BRN-03	2.68	<20	4.2	<10	12	0.09	104	<10
BRN-04	1.64	<20	12.6	<10	64	0.15	191	<10
*Rep BRN-04	1.61	<20	12.7	<10	64	0.16		
*Rep BRN-04							191	<10
BRN-05	0.36	<20	1.8	<10	24	0.01	37	<10
BRN-06	1.75	<20	12.7	<10	59	0.10	129	<10
BRN-07	1.02	<20	5.4	<10	23	0.07	49	<10
BRN-08	2.92	<20	6.9	<10	17	0.04	67	<10
BRN-09	>5.00	<20	5.9	<10	8	0.05	74	<10
BRN-10	2.95	<20	9.0	<10	13	0.08	165	<10
BRN-11	3.72	<20	10.2	<10	35	0.07	116	<10
BRN-12	2.83	<20	11.6	<10	43	0.22	153	<10
BRN-13	1.48	<20	19.0	<10	50	0.16	212	<10
BRN-14	1.84	<20	5.7	<10	16	0.07	90	<10
BRN-15	4.68	<20	6.4	<10	12	0.05	96	<10
BRN-16	1.92	<20	2.3	<10	7	0.03	41	<10
BRN-17	2.79	<20	16.6	<10	27	0.18	183	<10
BRN-18	2.22	<20	3.6	<10	5	0.03	50	<10
BRN-19	0.37	<20	3.2	<10	11	0.10	41	<10
BRN-20	3.27	<20	12.8	<10	10	0.12	422	<10
*Dup BRN-08	3.05	<20	7.2	<10	19	0.05	69	<10

This document is issued by the Company under its General Conditions of Service accessible at [http://www.sgs.com/terms\\_and\\_conditions.htm](http://www.sgs.com/terms_and_conditions.htm). Attention is drawn to the limitation of liability, indemnification and jurisdiction issues defined therein.

**WARNING:** The sample(s) to which the findings recorded herein (the "Findings") relate was (were) drawn and / or provided by the Client or by a third party acting at the Client's direction. The Findings constitute no warranty of the sample's representativity of the goods and strictly relate to the sample (s). The Company accepts no liability with regard to the origin or source from which the sample(s) is/are said to be extracted. The findings report on the samples provided by the client and are not intended for commercial or contractual settlement purposes. Any unauthorized alteration, forgery or falsification of the content or appearance of this document is unlawful and offenders may be prosecuted to the fullest extent of the law.

SGS Canada Inc. Minerals  
185 Concession Street Lakefield ON K0L 2H0 t+1(705) 652-2000 f+1(705) 652-6365 [www.ca.sgs.com](http://www.ca.sgs.com)

Member of the SGS Group (Société Générale de Surveillance)





Final : LK1600558 Order:

Page 6 of 6

Report File No. 000007733

Element Method Detection Limit Units	@Y	@Zn	@Zr	WtKg
	GE_ICP12B 0.5 ppm	GE_ICP12B 1 ppm	GE_ICP12B 0.5 ppm	G_WGH79 0.001 kg
BRN-01	15.9	49	2.6	0.367
BRN-02	1.5	34	1.3	1.697
BRN-03	10.3	50	7.8	1.226
BRN-04	15.4	171	3.9	1.159
*Rep BRN-04		171	4.0	
*Rep BRN-04	15.4			
BRN-05	3.4	22	<0.5	1.377
BRN-06	15.5	92	3.8	0.759
BRN-07	7.3	46	2.0	0.497
BRN-08	7.9	26	5.7	0.915
BRN-09	5.8	21	11.5	1.006
BRN-10	10.8	32	19.1	1.698
BRN-11	8.1	51	6.7	1.286
BRN-12	18.1	114	6.9	1.566
BRN-13	16.4	154	0.7	1.160
BRN-14	12.0	45	9.5	1.523
BRN-15	6.2	34	5.2	1.018
BRN-16	6.8	19	7.8	1.822
BRN-17	12.7	112	7.1	0.955
BRN-18	6.1	26	6.4	2.134
BRN-19	9.0	31	26.9	0.685
BRN-20	12.9	97	39.6	0.361
*Dup BRN-08	8.2	26	6.7	N.A.

This document is issued by the Company under its General Conditions of Service accessible at [http://www.sgs.com/terms\\_and\\_conditions.htm](http://www.sgs.com/terms_and_conditions.htm). Attention is drawn to the limitation of liability, indemnification and jurisdiction issues defined therein.

**WARNING:** The sample(s) to which the findings recorded herein (the "Findings") relate was (were) drawn and / or provided by the Client or by a third party acting at the Client's direction. The Findings constitute no warranty of the sample's representativity of the goods and strictly relate to the sample (s). The Company accepts no liability with regard to the origin or source from which the sample(s) is/are said to be extracted. The findings report on the samples provided by the client and are not intended for commercial or contractual settlement purposes. Any unauthorized alteration, forgery or falsification of the content or appearance of this document is unlawful and offenders may be prosecuted to the fullest extent of the law.

SGS Canada Inc. Minerals  
185 Concession Street Lakefield ON K0L 2H0 t+1(705) 652-2000 f+1(705) 652-6365 [www.ca.sgs.com](http://www.ca.sgs.com)

Member of the SGS Group (Société Générale de Surveillance)



**CLIENT NAME: MISC AGAT CLIENT ON, ON  
(403)**

**ATTENTION TO: Robert Dillman**

**PROJECT:**

**AGAT WORK ORDER: 16T135252**

**SOLID ANALYSIS REVIEWED BY: Brandon Wang, Spectroscopy Supervisor**

**DATE REPORTED: Sep 20, 2016**

**PAGES (INCLUDING COVER): 11**

Should you require any information regarding this analysis please contact your client services representative at (905) 501-9998

**\*NOTES**

**BR-1, BR-2, BR-3: Black River North Property, Grimsthorpe Twp., Ontario**

**BR-4, BR-5, BR-6: Black River South Property, Grimsthorpe Twp., Ontario**

**BR-7, BR-8, Claim 4277273, McVittie Twp., Ontario**

All samples are stored at no charge for 90 days. Please contact the lab if you require additional sample storage time.



**Certificate of Analysis**  
 AGAT WORK ORDER: 16T135252  
 PROJECT:

5623 McADAM ROAD  
 MISSISSAUGA, ONTARIO  
 CANADA L4Z 1N9  
 TEL (905)501-9888  
 FAX (905)501-0589  
 http://www.agatlabs.com

CLIENT NAME: MISC AGAT CLIENT ON

ATTENTION TO: Robert Dillman

(201-079) Sodium Peroxide Fusion - ICP-OES finish															
DATE SAMPLED: Sep 08, 2016		DATE RECEIVED: Sep 08, 2016						DATE REPORTED: Sep 20, 2016				SAMPLE TYPE: Rock			
Sample ID (AGAT ID)	Analyte:	Al	As	B	Ca	Co	Cr	Cu	Fe	K	Li	Mg	Mn	Mo	Ni
	Unit:	%	%	%	%	%	%	%	%	%	%	%	%	%	%
	RDL:	0.01	0.005	0.01	0.05	0.001	0.005	0.001	0.01	0.05	0.01	0.005	0.005	0.005	0.001
BR-1 (7830215)		4.17	7.56	<0.01	0.47	0.006	0.013	0.005	10.3	1.26	<0.01	0.906	0.016	<0.005	0.006
BR-2 (7830216)		6.94	3.12	<0.01	2.17	0.010	0.015	0.004	6.75	1.68	<0.01	1.51	0.052	<0.005	0.005
BR-3 (7830217)		4.08	2.55	<0.01	3.07	0.002	0.015	0.001	4.96	1.39	<0.01	1.99	0.054	<0.005	0.006
BR-4 (7830218)		0.07	0.007	<0.01	3.70	<0.001	0.009	0.003	9.36	<0.05	<0.01	0.039	0.096	<0.005	0.001
BR-5 (7830219)		2.42	3.30	<0.01	0.48	0.003	0.008	0.018	5.75	0.76	<0.01	0.681	0.008	<0.005	0.004
BR-6 (7830220)		3.81	1.89	<0.01	0.57	0.009	0.011	0.030	9.12	1.41	<0.01	0.806	0.015	<0.005	0.011
BR-7 (7830221)		8.86	0.018	<0.01	4.15	0.003	0.013	0.004	6.16	0.13	<0.01	2.81	0.085	<0.005	0.014
BR-8 (7830222)		8.49	<0.005	<0.01	4.89	0.003	0.014	0.005	6.63	0.12	<0.01	3.25	0.095	<0.005	0.018
Sample ID (AGAT ID)	Analyte:	Pb	S	Si	Sn	Ti	V	W	Zn						
	Unit:	%	%	%	%	%	%	%	%						
	RDL:	0.005	0.01	0.005	0.005	0.005	0.005	0.01	0.005						
BR-1 (7830215)		<0.005	4.44	29.2	<0.005	0.362	0.005	<0.01	0.007						
BR-2 (7830216)		<0.005	2.23	29.3	<0.005	0.760	0.007	<0.01	0.007						
BR-3 (7830217)		<0.005	1.50	30.4	<0.005	0.668	<0.005	<0.01	0.008						
BR-4 (7830218)		<0.005	0.17	37.1	<0.005	0.006	<0.005	<0.01	<0.005						
BR-5 (7830219)		0.007	3.36	36.8	<0.005	0.168	<0.005	<0.01	0.007						
BR-6 (7830220)		<0.005	6.88	32.4	<0.005	0.274	<0.005	0.02	<0.005						
BR-7 (7830221)		<0.005	0.30	25.3	<0.005	0.612	0.013	<0.01	0.007						
BR-8 (7830222)		<0.005	0.36	25.1	<0.005	0.638	0.014	<0.01	0.008						

Comments: RDL - Reported Detection Limit

Certified By:



# Certificate of Analysis

AGAT WORK ORDER: 16T135252  
PROJECT:

5623 McADAM ROAD  
MISSISSAUGA, ONTARIO  
CANADA L4Z 1N9  
TEL (905)501-8898  
FAX (905)501-0588  
http://www.agatlabs.com

CLIENT NAME: MISC AGAT CLIENT ON

ATTENTION TO: Robert Dillman

## (201-273) Aqua Regia Digest - Ore Grade Metals Package, ICP-OES finish

DATE SAMPLED: Sep 08, 2016	DATE RECEIVED: Sep 08, 2016								DATE REPORTED: Sep 20, 2016				SAMPLE TYPE: Rock			
Sample ID (AGAT ID)	Analyte:	Ag	Al	As	B	Ba	Be	Bi	Ca	Cd	Ce	Co	Cr	Cu	Fe	
	Unit:	ppm	%	ppm	ppm	ppm	ppm	ppm	%	ppm	ppm	ppm	ppm	ppm	%	
	RDL:	0.5	0.01	5	5	5	1.0	5	0.01	1.0	5	2.0	2.0	2.0	0.01	
BR-1 (7830215)		<0.5	1.42	75400	<5	78	<1.0	<5	0.10	<1.0	11	60.7	68.2	40.8	9.08	
BR-2 (7830216)		<0.5	2.43	32200	<5	145	1.8	<5	0.43	<1.0	19	98.1	118	36.9	6.01	
BR-3 (7830217)		<0.5	1.65	25400	11	114	1.3	<5	2.17	<1.0	25	21.8	120	10.5	4.39	
BR-4 (7830218)		<0.5	0.03	102	<5	30	<1.0	<5	0.25	<1.0	<5	<2.0	43.7	28.1	3.90	
BR-5 (7830219)		1.4	0.92	32700	<5	87	<1.0	<5	0.11	<1.0	10	28.5	50.4	187	5.21	
BR-6 (7830220)		1.8	1.50	18400	16	96	1.0	<5	0.19	<1.0	17	85.0	70.5	295	8.19	
BR-7 (7830221)		<0.5	2.81	211	<5	42	1.6	<5	1.76	<1.0	<5	23.2	96.0	35.2	4.75	
BR-8 (7830222)		<0.5	3.02	15	<5	56	1.8	<5	2.13	<1.0	<5	27.4	94.8	40.3	5.22	
Sample ID (AGAT ID)	Analyte:	Ga	Hg	In	K	La	Li	Mg	Mn	Mo	Na	Ni	P	Pb	Rb	
	Unit:	ppm	ppm	ppm	%	ppm	ppm	%	ppm	ppm	ppm	ppm	ppm	ppm	ppm	
	RDL:	20	5	5	0.01	5	5	0.01	5	2.0	0.01	2.0	50	2.0	50	
BR-1 (7830215)		<20	<5	9	0.69	<5	16	0.75	156	<2.0	0.04	42.2	356	11.8	55	
BR-2 (7830216)		21	6	14	1.38	7	20	1.30	277	<2.0	0.17	38.3	829	13.9	88	
BR-3 (7830217)		20	<5	6	0.96	8	21	1.70	572	2.1	0.06	43.5	1730	17.2	56	
BR-4 (7830218)		<20	<5	<5	<0.01	<5	<5	0.02	119	<2.0	<0.01	5.4	53	3.8	<50	
BR-5 (7830219)		<20	<5	6	0.47	<5	7	0.60	109	3.1	0.05	30.1	319	52.1	<50	
BR-6 (7830220)		<20	<5	8	0.58	5	30	0.66	171	<2.0	0.05	89.5	880	19.4	<50	
BR-7 (7830221)		21	<5	<5	0.02	<5	12	2.17	773	<2.0	0.13	109	375	8.6	<50	
BR-8 (7830222)		22	<5	<5	0.02	<5	13	2.41	850	<2.0	0.10	137	481	8.0	<50	
Sample ID (AGAT ID)	Analyte:	S	Sb	Sc	Se	Sn	Sr	Ta	Ta	Th	Ti	Ti	U	V	W	
	Unit:	%	ppm	ppm	ppm	ppm	ppm	ppm	ppm	ppm	%	ppm	ppm	ppm	ppm	
	RDL:	0.01	5	2.0	50	20	2.0	50	50	20	0.01	50	20	2.0	5	
BR-1 (7830215)		4.29	19	6.6	<50	<20	<2.0	<50	<50	<20	0.06	<50	<20	80.9	<5	
BR-2 (7830216)		2.17	11	13.5	<50	<20	5.4	<50	<50	<20	0.18	<50	<20	118	11	
BR-3 (7830217)		1.43	11	9.7	<50	<20	24.4	<50	<50	<20	0.15	<50	<20	57.9	26	
BR-4 (7830218)		0.11	<5	<2.0	<50	<20	<2.0	<50	<50	<20	<0.01	<50	<20	4.9	<5	
BR-5 (7830219)		3.23	13	5.1	<50	<20	<2.0	<50	<50	<20	0.07	<50	<20	36.0	<5	
BR-6 (7830220)		6.27	9	6.8	<50	<20	<2.0	<50	<50	<20	0.07	<50	<20	87.3	122	
BR-7 (7830221)		0.25	7	6.5	<50	<20	5.5	<50	<50	<20	0.19	<50	<20	115	6	
BR-8 (7830222)		0.27	5	6.3	<50	<20	8.6	<50	<50	<20	0.21	<50	<20	117	6	

Certified By: 



**AGAT** Laboratories

**Certificate of Analysis**

AGAT WORK ORDER: 16T135252  
PROJECT:

5623 McADAM ROAD  
MISSISSAUGA, ONTARIO  
CANADA L4Z 1N9  
TEL (905)501-9998  
FAX (905)501-0589  
http://www.agatlabs.com

CLIENT NAME: MISC AGAT CLIENT ON

ATTENTION TO: Robert Dillman

**(201-273) Aqua Regia Digest - Ore Grade Metals Package, ICP-OES finish**

DATE SAMPLED: Sep 08, 2016	DATE RECEIVED: Sep 08, 2016	DATE REPORTED: Sep 20, 2016	SAMPLE TYPE: Rock
	Analyte: Y Zn Zr		
	Unit: ppm ppm ppm		
	RDL: 5 2.0 20		
Sample ID (AGAT ID)			
BR-1 (7830215)	6	33.2	<20
BR-2 (7830216)	8	56.6	<20
BR-3 (7830217)	11	60.4	<20
BR-4 (7830218)	<5	<2.0	<20
BR-5 (7830219)	<5	53.2	<20
BR-6 (7830220)	7	29.2	<20
BR-7 (7830221)	<5	49.1	<20
BR-8 (7830222)	<5	61.9	<20

Comments: RDL - Reported Detection Limit

**Certified By:**



**Certificate of Analysis**

AGAT WORK ORDER: 16T135252  
PROJECT:

5623 McADAM ROAD  
MISSISSAUGA, ONTARIO  
CANADA L4Z 1N6  
TEL (905)501-9596  
FAX (905)501-0589  
<http://www.agatlab.com>

CLIENT NAME: MISC AGAT CLIENT ON

ATTENTION TO: Robert Dillman

(202-055) Fire Assay - Au, Pt, Pd Trace Levels, ICP-OES finish				
DATE SAMPLED: Sep 08, 2016	DATE RECEIVED: Sep 08, 2016	DATE REPORTED: Sep 20, 2016	SAMPLE TYPE: Rock	
Sample ID (AGAT ID)	Analyte:	Au	Pd	Pt
	Unit:	ppm	ppm	ppm
	RDL:	0.001	0.001	0.005
BR-1 (7830215)		5.72	0.007	<0.005
BR-2 (7830216)		1.37	0.010	<0.005
BR-3 (7830217)		0.234	<0.001	<0.005
BR-4 (7830218)		0.003	<0.001	<0.005
BR-5 (7830219)		2.61	0.004	<0.005
BR-6 (7830220)		2.20	0.018	<0.005
BR-7 (7830221)		0.007	0.002	<0.005
BR-8 (7830222)		0.002	<0.001	<0.005

Comments: RDL - Reported Detection Limit

Certified By: \_\_\_\_\_



Quality Assurance - Replicate  
 AGAT WORK ORDER: 16T135252  
 PROJECT:

5623 McADAM ROAD  
 MISSISSAUGA, ONTARIO  
 CANADA L4Z 1N9  
 TEL: (905)501-8988  
 FAX: (905)501-0589  
 http://www.agatlabs.com

CLIENT NAME: MISC AGAT CLIENT ON

ATTENTION TO: Robert Dillman

(201-079) Sodium Peroxide Fusion - ICP-OES finish				
Parameter	Sample ID	REPLICATE #1		RPD
		Original	Replicate	
Al	7830215	4.17	4.09	1.9%
As	7830215	7.56	7.47	1.2%
B	7830215	< 0.01	< 0.01	0.0%
Ca	7830215	0.47	0.47	0.0%
Co	7830215	0.008	0.008	0.0%
Cr	7830215	0.013	0.013	0.0%
Cu	7830215	0.005	0.005	0.0%
Fe	7830215	10.3	10.3	0.0%
K	7830215	1.26	1.26	0.0%
Li	7830215	< 0.01	< 0.01	0.0%
Mg	7830215	0.906	0.926	2.2%
Mn	7830215	0.016	0.018	11.8%
Mo	7830215	< 0.005	< 0.005	0.0%
Ni	7830215	0.006	0.006	0.0%
Pb	7830215	< 0.005	< 0.005	0.0%
S	7830215	4.44	4.55	2.4%
Si	7830215	29.2	29.3	0.3%
Sn	7830215	< 0.005	< 0.005	0.0%
Ti	7830215	0.362	0.359	0.8%
V	7830215	0.005	0.005	0.0%
W	7830215	< 0.01	< 0.01	0.0%
Zn	7830215	0.007	0.007	0.0%
(201-273) Aqua Regia Digest - Ore Grade Metals Package, ICP-OES finish				
Parameter	Sample ID	REPLICATE #1		RPD
		Original	Replicate	
Ag	7830215	< 0.5	< 0.5	0.0%
Al	7830215	1.42	1.44	1.4%
As	7830215	75400	76500	1.4%
B	7830215	< 5	< 5	0.0%
Ba	7830215	78	82	5.0%
Be	7830215	< 1.0	< 1.0	0.0%

AGAT QUALITY ASSURANCE REPORT

Results relate only to the items listed and to all the items tested

Page 6 of 11





Quality Assurance - Replicate  
 AGAT WORK ORDER: 16T135252  
 PROJECT:

5623 McADAM ROAD  
 MISSISSAUGA, ONTARIO  
 CANADA L4Z 1N9  
 TEL (905)501-8988  
 FAX (905)501-0589  
 http://www.agatlabs.com

CLIENT NAME: MISC AGAT CLIENT ON

ATTENTION TO: Robert Dillman

Bi	7830215	< 5	< 5	0.0%																			
Ca	7830215	0.10	0.10	0.0%																			
Cd	7830215	< 1.0	< 1.0	0.0%																			
Ce	7830215	11	11	0.0%																			
Co	7830215	60.7	60.2	0.8%																			
Cr	7830215	68.2	68.0	0.3%																			
Cu	7830215	40.8	41.1	0.7%																			
Fe	7830215	9.08	9.05	0.3%																			
Ga	7830215	< 20	< 20	0.0%																			
Hg	7830215	< 5	< 5	0.0%																			
In	7830215	9	6																				
K	7830215	0.69	0.70	1.4%																			
La	7830215	< 5	< 5	0.0%																			
Lj	7830215	16	18	0.0%																			
Mg	7830215	0.75	0.77	2.6%																			
Mn	7830215	156	171	9.2%																			
Mo	7830215	< 2.0	< 2.0	0.0%																			
Na	7830215	0.04	0.04	0.0%																			
Ni	7830215	42.2	43.6	3.3%																			
P	7830215	356	367	3.0%																			
Pb	7830215	11.9	18.0																				
Rb	7830215	55	54	1.8%																			
S	7830215	4.29	4.42	3.0%																			
Sb	7830215	19	25	27.3%																			
Sc	7830215	6.6	6.4	3.1%																			
Se	7830215	< 50	< 50	0.0%																			
Sn	7830215	< 20	< 20	0.0%																			
Sr	7830215	< 2.0	< 2.0	0.0%																			
Ta	7830215	< 50	< 50	0.0%																			
Te	7830215	< 50	< 50	0.0%																			
Th	7830215	< 20	< 20	0.0%																			
Tl	7830215	0.09	0.09	0.0%																			
Tl	7830215	< 50	< 50	0.0%																			
U	7830215	< 20	< 20	0.0%																			



Quality Assurance - Replicate  
 AGAT WORK ORDER: 16T135252  
 PROJECT:

5623 McADAM ROAD  
 MISSISSAUGA, ONTARIO  
 CANADA L4Z 1N9  
 TEL: (905)501-9998  
 FAX: (905)501-0589  
 http://www.agatlabs.com

CLIENT NAME: MISC AGAT CLIENT ON

ATTENTION TO: Robert Dillman

V	7830215	80.9	82.5	2.0%														
W	7830215	< 5	< 5	0.0%														
Y	7830215	6	6	0.0%														
Zn	7830215	33.2	33.8	1.8%														
Zr	7830215	< 20	< 20	0.0%														

(202-055) Fire Assay - Au, Pt, Pd Trace Levels, ICP-OES finish

Parameter	Sample ID	REPLICATE #1		RPD														
		Original	Replicate															
Au	7830215	5.72	5.80	1.4%														
Pd	7830215	0.0074	0.0075	1.3%														
Pt	7830215	< 0.005	< 0.005	0.0%														



Quality Assurance - Certified Reference materials  
 AGAT WORK ORDER: 16T135252  
 PROJECT:

5623 McADAM ROAD  
 MISSISSAUGA, ONTARIO  
 CANADA L4Z 1N8  
 TEL (905)501-9696  
 FAX (905)501-0589  
 http://www.agatlabs.com

CLIENT NAME: MISC AGAT CLIENT ON

ATTENTION TO: Robert Dillman

<b>(201-079) Sodium Peroxide Fusion - ICP-OES finish</b>				
CRM #1 (ref.MP-1b)				
Parameter	Expect	Actual	Recovery	Limits
Al	3.465	3.538	102%	90% - 110%
As	2.3	2.3	99%	90% - 110%
Ca	2.47	2.41	98%	90% - 110%
Cu	3.069	3.05	99%	90% - 110%
Fe	8.19	8.19	100%	90% - 110%
K	0.2	0.2	93%	90% - 110%
Mn	0.048	0.052	108%	90% - 110%
Mo	0.0285	0.0298	105%	90% - 110%
Pb	2.091	2.134	102%	90% - 110%
S	13.79	13.94	101%	90% - 110%
Si	16.79	16.37	97%	90% - 110%
Ti	0.0752	0.078	104%	90% - 110%
Zn	15.57	15.01	96%	90% - 110%

<b>(201-273) Aqua Regia Digest - Ore Grade Metals Package, ICP-OES finish</b>				
CRM #1 (ref.CDN-ME-1304)				
Parameter	Expect	Actual	Recovery	Limits
Ag	34	35	102%	80% - 120%
Cu	2680	2717	101%	80% - 120%
Pb	2580	2595	101%	80% - 120%
Zn	2200	2163	99%	80% - 120%

<b>(202-055) Fire Assay - Au, Pt, Pd Trace Levels, ICP-OES finish</b>				
CRM #1 (ref.PG129)				
Parameter	Expect	Actual	Recovery	Limits
Au	1.1	1.1	99%	90% - 110%
Pd	0.115	0.114	99%	90% - 110%
Pt	0.238	0.236	99%	90% - 110%

## Method Summary

CLIENT NAME: MISC AGAT CLIENT ON

AGAT WORK ORDER: 16T135252

PROJECT:

ATTENTION TO: Robert Dillman

SAMPLING SITE:

SAMPLED BY:

PARAMETER	AGAT S.O.P	LITERATURE REFERENCE	ANALYTICAL TECHNIQUE
<b>Solid Analysis</b>			
Al	MIN-200-12001		ICP/OES
As	MIN-200-12001		ICP/OES
B	MIN-200-12001		ICP/OES
Ca	MIN-200-12001		ICP/OES
Co	MIN-200-12001		ICP/OES
Cr	MIN-200-12001		ICP/OES
Cu	MIN-200-12001		ICP/OES
Fe	MIN-200-12001		ICP/OES
K	MIN-200-12001		ICP/OES
Li	MIN-200-12001		ICP/OES
Mg	MIN-200-12001		ICP/OES
Mn	MIN-200-12001		ICP/OES
Mo	MIN-200-12001		ICP/OES
Ni	MIN-200-12001		ICP/OES
Pb	MIN-200-12001		ICP/OES
S	MIN-200-12001		ICP/OES
Si	MIN-200-12001		ICP/OES
Sn	MIN-200-12001		ICP/OES
Ti	MIN-200-12001		ICP/OES
V	MIN-200-12001		ICP/OES
W			ICP/OES
Zn	MIN-200-12001		ICP/OES
Ag	MIN-200-12020		ICP/OES
Al	MIN-200-12020		ICP/OES
As	MIN-200-12020		ICP/OES
B	MIN-200-12020		ICP/OES
Ba	MIN-200-12020		ICP/OES
Be	MIN-200-12020		ICP/OES
Bi	MIN-200-12020		ICP/OES
Ca	MIN-200-12020		ICP/OES
Cd	MIN-200-12020		ICP/OES
Ce	MIN-200-12020		ICP/OES
Co	MIN-200-12020		ICP/OES
Cr	MIN-200-12020		ICP/OES
Cu	MIN-200-12020		ICP/OES
Fe	MIN-200-12020		ICP/OES
Ga	MIN-200-12020		ICP/OES
Hg	MIN-200-12020		ICP/OES
In	MIN-200-12020		ICP/OES
K	MIN-200-12020		ICP/OES
La	MIN-200-12020		ICP/OES
Li	MIN-200-12020		ICP/OES
Mg	MIN-200-12020		ICP/OES
Mn	MIN-200-12020		ICP/OES
Mo	MIN-200-12020		ICP/OES
Na	MIN-200-12020		ICP/OES
Ni	MIN-200-12020		ICP/OES
P	MIN-200-12020		ICP/OES
Pb	MIN-200-12020		ICP/OES

## Method Summary

CLIENT NAME: MISC AGAT CLIENT ON

AGAT WORK ORDER: 16T135252

PROJECT:

ATTENTION TO: Robert Dillman

SAMPLING SITE:

SAMPLED BY:

PARAMETER	AGAT S.O.P	LITERATURE REFERENCE	ANALYTICAL TECHNIQUE
Rb	MIN-200-12020		ICP/OES
S	MIN-200-12020		ICP/OES
Sb	MIN-200-12020		ICP/OES
Sc	MIN-200-12020		ICP/OES
Se	MIN-200-12020		ICP/OES
Sn	MIN-200-12020		ICP/OES
Sr	MIN-200-12020		ICP/OES
Ta	MIN-200-12020		ICP/OES
Te	MIN-200-12020		ICP/OES
Th	MIN-200-12020		ICP/OES
Ti	MIN-200-12020		ICP/OES
Tl	MIN-200-12020		ICP/OES
U	MIN-200-12020		ICP/OES
V	MIN-200-12020		ICP/OES
W	MIN-200-12020		ICP/OES
Y	MIN-200-12020		ICP/OES
Zn	MIN-200-12020		ICP/OES
Zr	MIN-200-12020		ICP/OES
Au	MIN-200-12006	BUGBEE, E: A Textbook of Fire Assaying	ICP/OES
Pd	MIN-200-12006	BUGBEE, E: A Textbook of Fire Assaying	ICP/OES
Pt	MIN-200-12006	BUGBEE, E: A Textbook of Fire Assaying	ICP/OES



Invoice No. 0000036006  
Date 02-Sep-2016  
Work Worder No. LK1600558  
Order No.

Attn: ROBERT DILLMAN  
8901 REILY DR  
  
MOUNT BRYDGES ON  
N0L 1W0  
CANADA

Item	Quantity	Unit Price	Amount
Exploration grade 50g Pb fusion, AAS [GE_FAA515]	20	18.65	373.00
Exploration grade 2 acid digest for organic or high sulphide >10% - ICP-OES [G_P#	20	13.10	262.00
Weigh, dry (<3.0kg) crush 75% -2mm, split <250g, pulverize 85% -75µm [G_P#	20	9.00	180.00
Total Services			815.00
Tax			0.00
<b>Total</b> CAD			<b>815.00</b>

SGS Canada Inc.

Minerals Services 185 Concession Street Lakefield ON K0L 2H0 (705) 652-2000 (705) 652-8365 [www.sgs.ca](http://www.sgs.ca)

Member of the SGS Group (Société Générale de Surveillance)





5623 McAdam Road  
Mississauga, Ontario  
L4Z 1N9  
Tel:(905) 501-9998  
Fax:(905) 501-0589

**INVOICE NO. 16303953M**

Date:30/Sep/16

GST #: R100073238

Toronto lab

Customer No	WorkOrder No	Branch	Customer P.O.	Division ID	Acct Code	District	Product
9999304	16T135252	T		10		30	0
Date Received		AFE					
08/Sep/16							
Product ID	Product Description		Quantity	Unit Price	Extended Price		

RE:

200-001	Dry <5 kg, crush to 75% passing 2 mm split to 250-g and pulverize to 85% passing 75 um	8.00	\$10.00	\$80.00
201-079	Peroxide Fusion, ICP-OES Finish	8.00	\$23.00	\$184.00
201-273	Metals Package (AquaRegia) - ICP (high sulfide)	8.00	\$14.00	\$112.00
202-055	Trace Au, Pt & Pd by Fire Assay / ICP Finish	8.00	\$19.00	\$152.00
208-004	Courier Charges for sample pickup and delivery	1.00	\$0.00	\$0.00
			Subtotal:	\$528.00

TERMS: NET 30 C

AGAT LABORATORIES LTD.  
5623 McADAM RD  
MISSISSAUGA, ON

Form ID: 2849396

Purchase

XXXXXXXXXXXX571  
VISA

Entry Method: H

Total: \$ 596.64

2016/09/30 12:02:05

Seq #: 0010016400

Appr. Code: 061716

Resp Code: 00/021

APPROVED  
Thank You

Customer Copy

IMPORTANT -  
retain this copy for your records

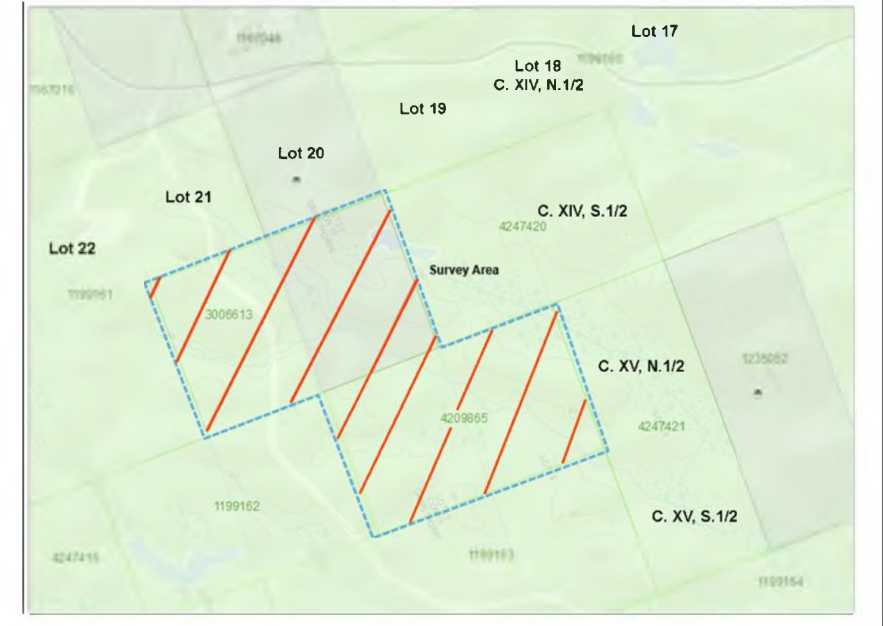
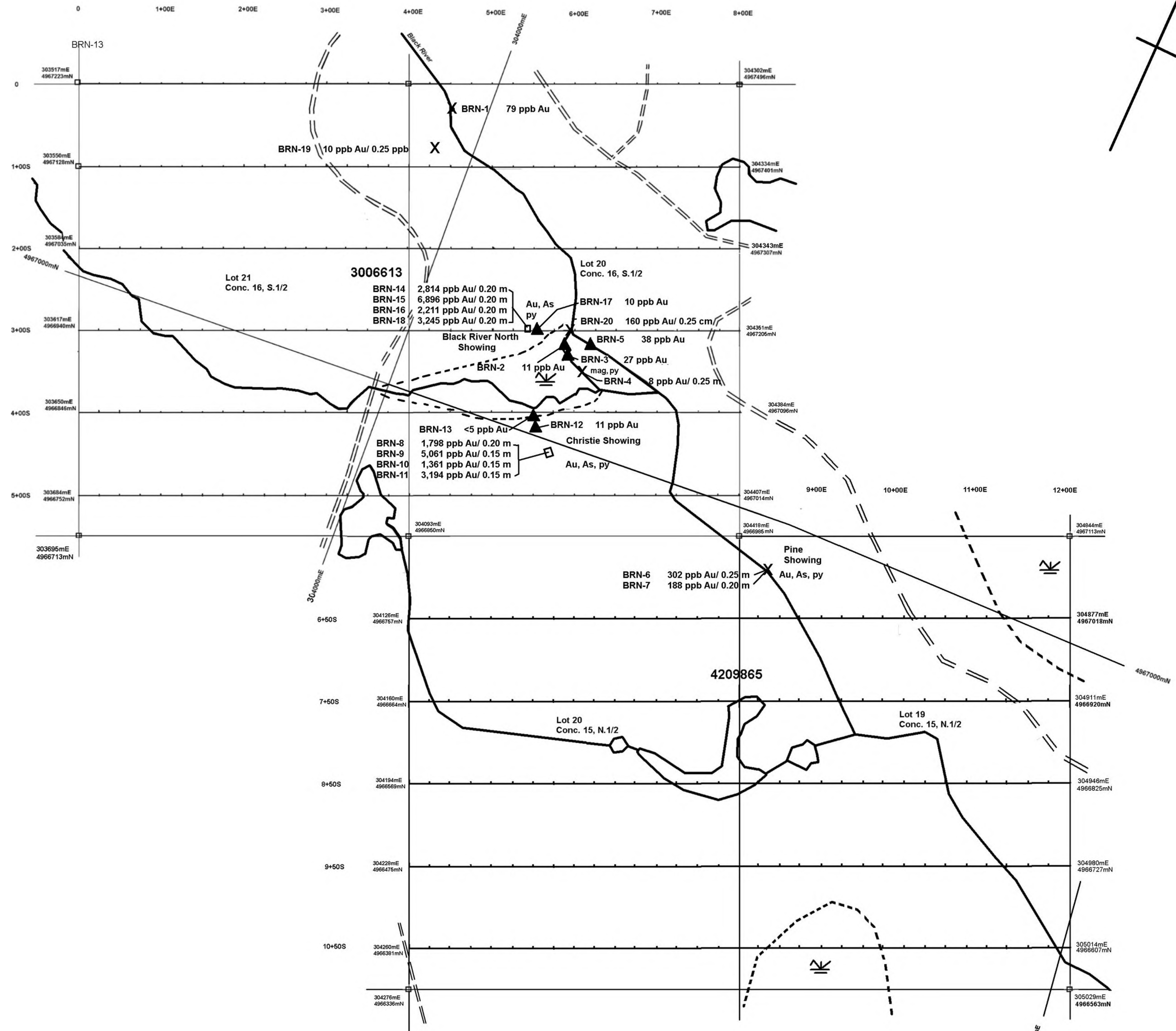
% PER ANNUM)

HST: \$68.64  
Total: \$596.64

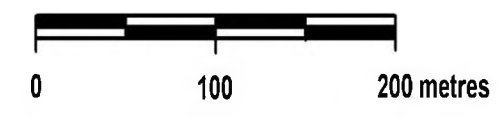
Corporate Office:  
MISC AGAT CLIENT AB  
AB

Invoice To:  
MISC AGAT CLIENT ON  
ON  
Attn To: Robert Dillman

3 Samples BR-1, BR-2, BR-3: Black River North Property, Grimsthorpe Twp. \$223.74  
3 Samples BR-4, BR-5, BR-6: Black River South Property, Grimsthorpe Twp. \$223.74  
2 Samples BR-7, BR-8: Claim 4277273, McVittie Twp. \$149.16



- X outcrop
- trench
- ▲ boulder



ROCK SAMPLE LOCATIONS & ASSAY RESULTS	
BLACK RIVER NORTH PROPERTY GRIMSTHORPE TWP., ONTARIO	
UNION GLORY GOLD LIMITED	
DATE: Oct., 2016	SURVEY BY: RJD, JMC
Scale: 1: 2500	DRAWN BY: RJD