

We are committed to providing [accessible customer service](#).  
If you need accessible formats or communications supports, please [contact us](#).

Nous tenons à améliorer [l'accessibilité des services à la clientèle](#).  
Si vous avez besoin de formats accessibles ou d'aide à la communication, veuillez [nous contacter](#).

2.57312

Field work Onclaim #4271158 Tudhope Twp.

Started route # 1 at post #2 went west about 100 m .Then headed north toward north border 300m headed west for 100m turn south and headed for south border of claim. At claim line turn west for 100m then turn north and head toward north border of claim. Travel sw along a swamp to west border of claim headed south to south border of claim. Taveled by west side of Paragon shaft hit border head east to post #2 end day #1.

Day# 2 route #2

Start from #2 head north for 100m turn west head for west border of claim travel by Paragon shaft to border. head north for 100m turn east border of claim. Next head north for 100m then turn west toward west border of claim. From this point go back to shaft spent rest of day on pile. end day #2

Day #3 brought in hand held metal detector to shaft rock pile to look for metallic minerals on pile. found 1 piece of Nickle. Check around rock pile and trenches rest of day. Very discouraging this area.

Day #1 and 3@

used a Garrett grand master hunter metal detector equipped with a bloodhound 2 box detector .can find targets to about 10 feet. on rock pile used a Fisher Day #1, F75 a hand held metal detector have found a lot of things with it over the years.

Bill Bush

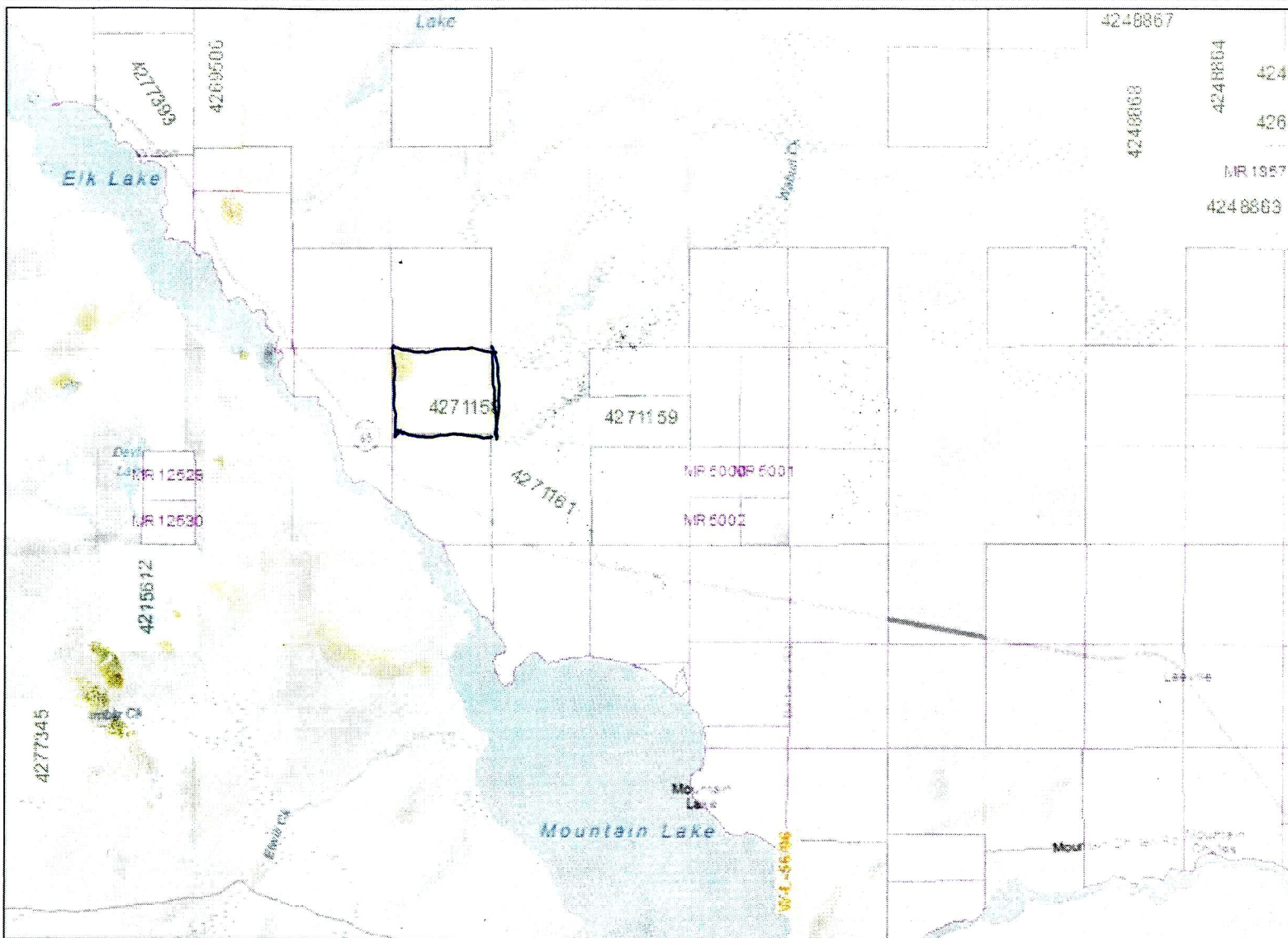


Routes were done using two men one on compass and gps other using two box metal detector.. No lines where cut ground was not disturbed except when a target was found. Only things found to date shovel head broken pick.



TUDHOPE TWP  
map title  
CLAIM LOCATION

Notes:  
Enter map notes



- ### Legend
- Administration Boundaries**
    - Mining Divisions
    - Resident Geologist District
    - Townships and Areas
    - UTM Grid
    - Geographic Lot Fabric
    - Other Federal Land
  - Mineral Tenure Grid**
    - CMTG Tenure Grid
  - Alienations**
    - Withdrawal
    - N2face
  - Unpatented Claim**
    - Active
    - Reconced
    - Pending
  - Disposition**
    - Disposition
  - Disposition Symbols**
    - Camp
    - Disposition Unknown/Pending
    - Freehold Patent Mining Rights Only
    - Freehold Patent Surface Rights Only
    - Freehold Patent Surface and Mining Rights
    - Land Use Permit
    - Leasehold Patent Mining Rights Only
    - Leasehold Patent Surface Rights Only
    - Leasehold Patent Surface and Mining Rights
    - License of Occupation Mining Use Only
    - License of Occupation Surface Use Only
    - License of Occupation Surface and Mining Rights
    - License of Occupation Uses Not Specified
    - Order in Council
    - Tower
    - WPLA
  - Geology Layers**
    - AMIS Sites
    - AMIS Features
    - Drill Holes
    - Mineral Occurrences

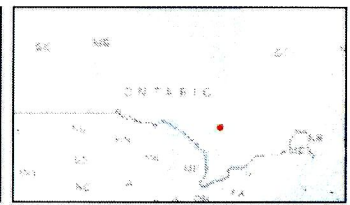


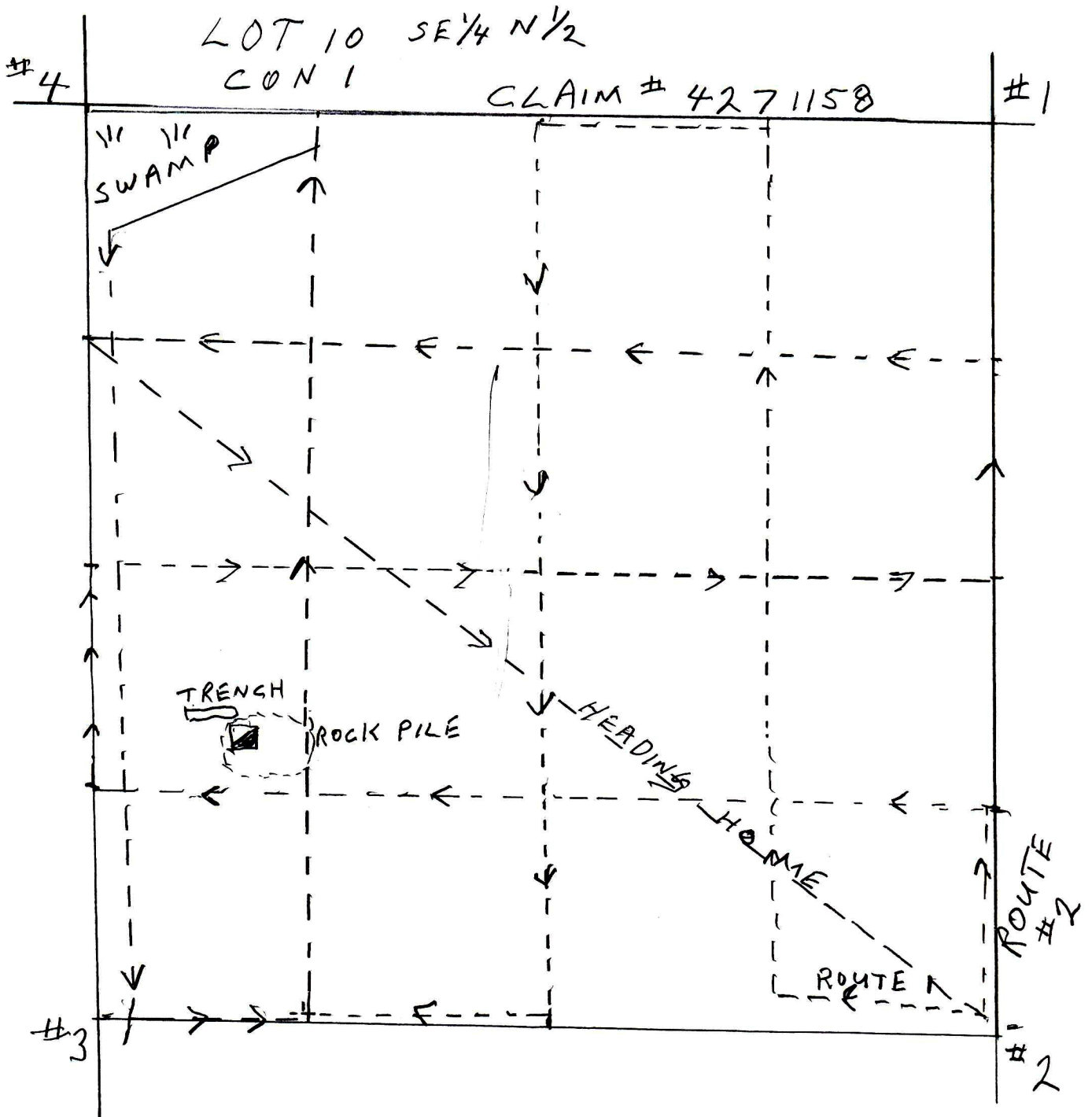
Projection: Web Mercator



The Ontario Ministry of Northern Development and Mines shall not be liable in any way for the use of, or reliance upon, this map or any information on this map. This map should not be used for: navigation, a plan of survey, routes, nor locations.

Imagery Copyright Notices: Ontario Ministry of Natural Resources and Forestry; NASA Landsat Program; First Base Solutions Inc.; Aéro-Photo (1961) Inc.; DigitalGlobe Inc.; U.S. Geological Survey.





SCALE 1 1/2 IN. = 100 M