

We are committed to providing [accessible customer service](#).  
If you need accessible formats or communications supports, please [contact us](#).

Nous tenons à améliorer [l'accessibilité des services à la clientèle](#).  
Si vous avez besoin de formats accessibles ou d'aide à la communication, veuillez [nous contacter](#).

2.57390

**Prospecting Report**  
**On The**  
**Sheppard Group Claims 4203306**  
**Aylmer Township, Sudbury, Ontario**  
**October 6, 2016**

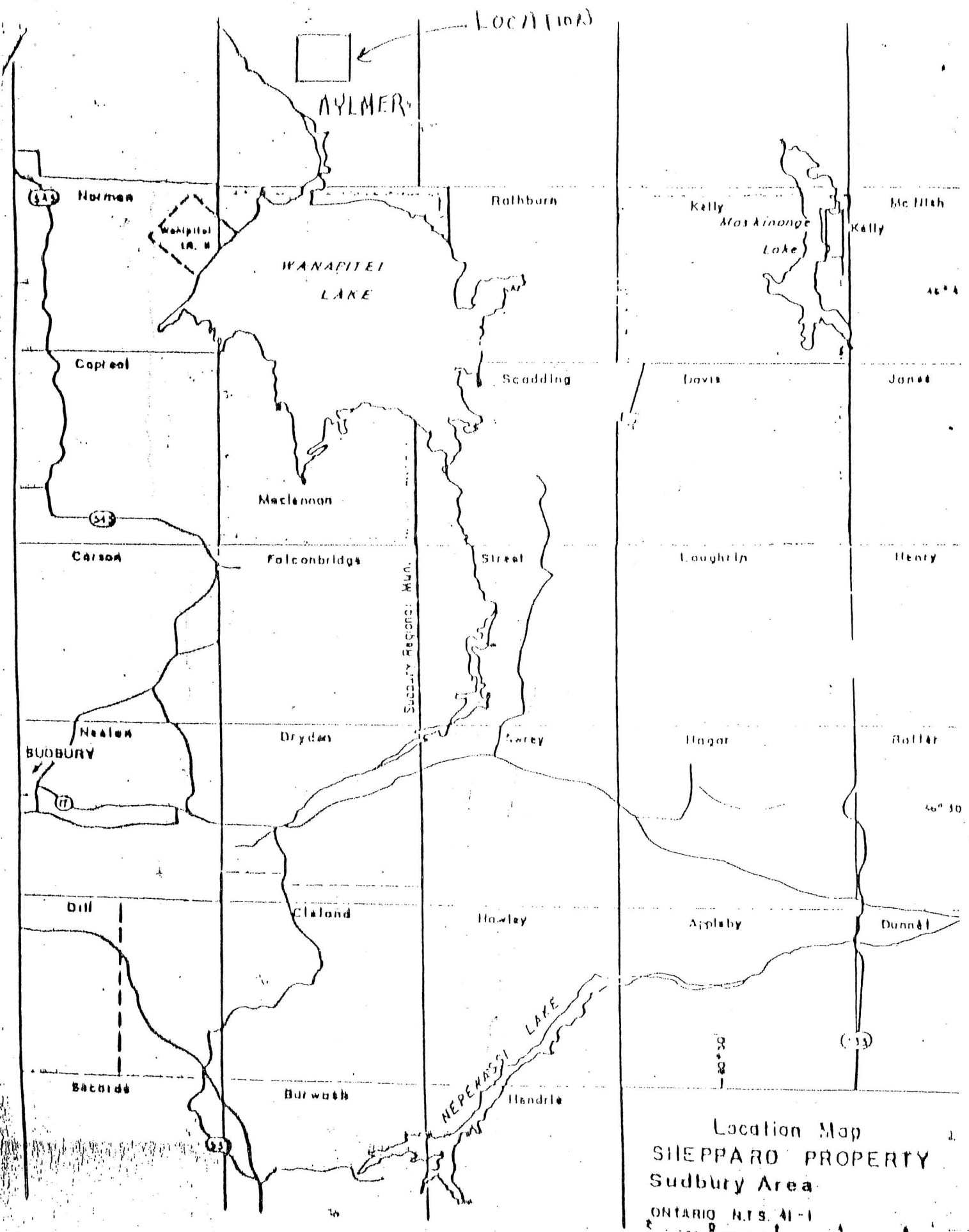
**F. Delabbio, P.Eng.**

## **TABLE OF CONTENTS**

Location and Access	1
Location Map	2
Claim Map	3
Work Log (Oct. 6, 2016)	4 & 4a
Preamble	5
Work Location Map	6
Assay Report	7
Assay Invoice	8
List of Workers	9

## LOCATION AND ACCESS

Aylmer Township is located north of Lake Wanapitei, Sudbury Mining Division. Access to the mining claims in Aylmer Township is via Highway 545 North of Capreol and onto the Portelance Road. You travel north for 18 km after the turnoff for the Wanapitei First Nation. You then leave the Portelance Road and turn South over the bridge of the Wanapitei River onto the Poupore Road. You travel on the Poupore Road for 11 km to 13 km to access the claims in difference areas.



4216908  
W.S. 05/11

4216909

A.P. 108326  
4203306

4219135

4216910

SHEPPARD CLAIMS

AYLMER

Sudbury

**Job:** Aylmer

**Date:** October 6, 2016

Picked up Tom in Capreol and we travelled up to claim 4203306 to continue work in the trenches we have located. We dug much deeper with the extra tools but do not reach bed rock but located another trench with a steel barrel in it. None of the trenches appear to reach bed rock so we do not know what they are looking for. When the leaves are gone, we will make a composite map that may tell us something. We went up and sampled a new showing on the new quarry road (Gold showings) and located what looks like a continuation of the structure which we will sample later as we ran out of time.

**Party Chief:** Fred Delabbio

**Weather:** 17 degrees, Mixed

JOB..... AYER ..... DATE..... Oct 6/16 .....  
PAGE.....

Picked up Tom in Capetown and we travelled up to claim H203306 to continue work in the trenches we have located. We dug much deeper with the extra tools but do not reach bed rock but located another trench with a steel barrel in it.

None of the trenches appear to reach bed rock so we do not know what they are looking for. When the leaves are gone we will make a composite map that may tell us something. We went up and sampled a new showing on the new quarry road (Gold showing) and located what looks like a continuation of the structure which we will sample later as we run out of time.

PARTY CHIEF.....

F. Delapio

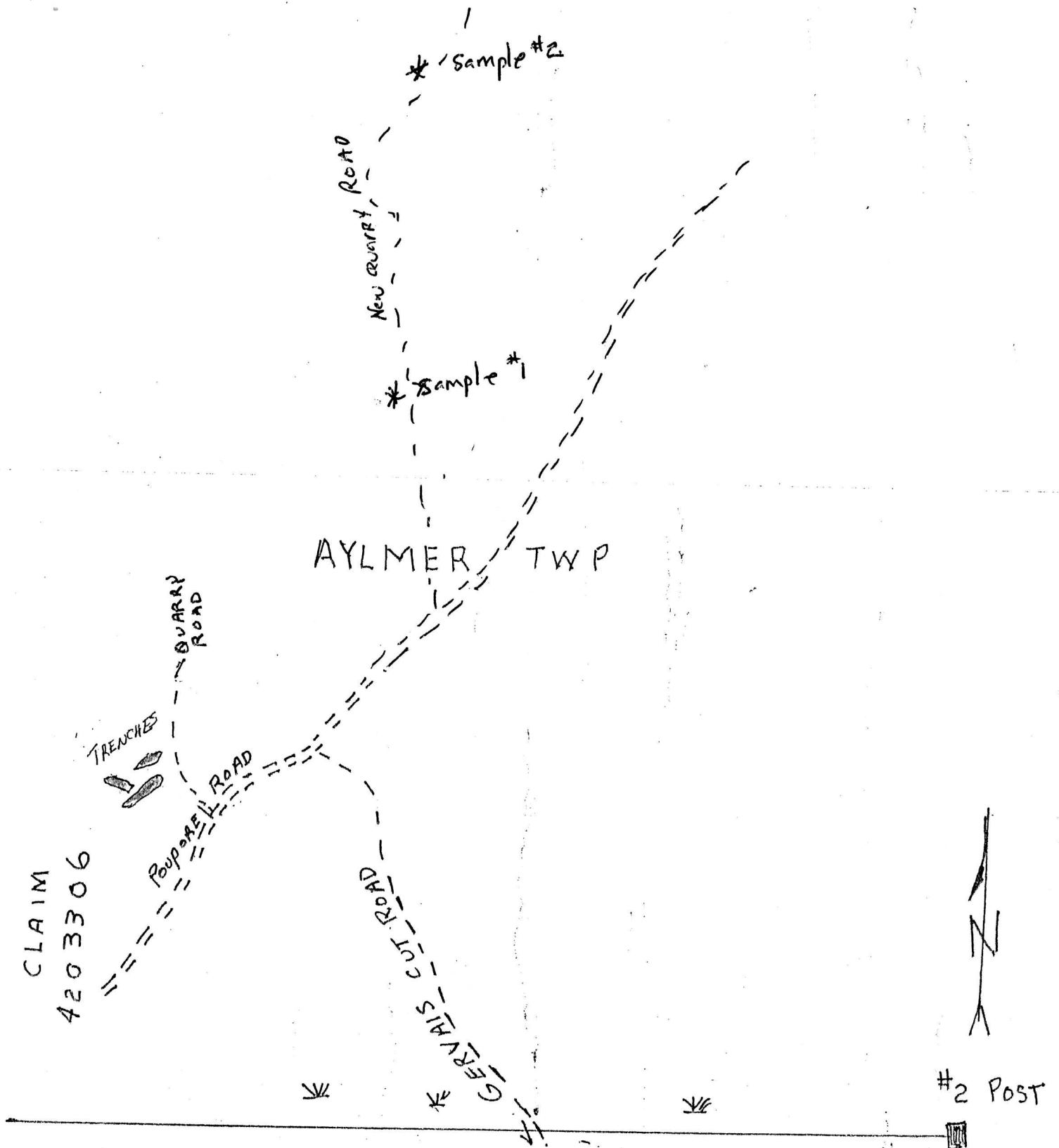
WEATHER.....

17°C - Mixed

## **Preamble**

We have discovered old workings on claim 4203306. There are a number of trenches with steel barrel hoops remaining since the barrels have rotted away. We worked at cleaning out debris to get to the bottom of the trenches but they remain in alluvial debris. There is no record of this previous work on file or maps and we are trying to correlate it with our work.

We moved along the new cut road into claim 4216910 and cleaned off an area of rusty quartzite. Unfortunately, we lost our hammer and will return at a later date to sample this showing.



SCALE  
0 200 400  
1" = 200M

OCT. 20/2016

TRENCHES  
SAMPLE



**CLIENT: Fred Delabio**

Job #: 0-247

Shipment Date: September 28, 2016

QD28 Certificate of Analysis Apr 2012 Rev (3)

Std OxK 119	0.108	3.703	2 Rocks
Blank	<.001	<.03	

Assayer:

Spencer Webb

Names and Signatures of workers

Tom Sheppard

Tom Sheppard

Jim Jackson

Jim Jackson

Fred Delabbio

Fred Delabbio

Blaine Olivier

Blaine Olivier

B. L. Montgomery

B. L. Montgomery

Joe Church

Joe Church

Nancy Delabbio

Nancy Delabbio

Dr. G. Courtin

Dr. G. Courtin

**Frank Moore**

Frank Moore