

We are committed to providing [accessible customer service](#).
If you need accessible formats or communications supports, please [contact us](#).

Nous tenons à améliorer [l'accessibilité des services à la clientèle](#).
Si vous avez besoin de formats accessibles ou d'aide à la communication, veuillez [nous contacter](#).



CANADIAN EXPLORATION SERVICES LTD

GOLDEN VALLEY MINES LTD.

**Q2248 – Island 27 Prospect
Soil Sampling Survey**

C Jason Ploeger, P.Geo – December 8, 2016



Golden Valley Mines Ltd. Mines de la Vallée de l'Or ltée

Abstract

CXS was contracted by Golden Valley Mines Ltd to collect soil samples over the Island 27 Prospect located in Holmes township, Ontario. From the sampling program 100 samples were assayed for gold. Two anomalous gold trends were identified striking at approximately 115 degrees across the survey area.

GOLDEN VALLEY MINES LTD.

**Q2248 – Island 27 Prospect
Soil Sampling Survey**

C Jason Ploeger, P.Geol – December 8, 2016

TABLE OF CONTENTS

1.	SURVEY DETAILS	3
1.1	PROJECT NAME	3
1.2	CLIENT.....	3
1.3	LOCATION	3
1.4	ACCESS	4
1.5	SURVEY GRID.....	4
1.	SURVEY WORK UNDERTAKEN	5
1.1	SURVEY LOG	5
1.2	PERSONNEL	5
1.3	SURVEY SPECIFICATIONS	5
1.4	DUPLICATES AND STANDARDS	6
2.	OVERVIEW OF SURVEY RESULTS	8
2.1	SUMMARY INTERPRETATION.....	8

LIST OF APPENDICES

- APPENDIX A: STATEMENT OF QUALIFICATIONS**
- APPENDIX B: INSTRUMENT SPECIFICATIONS**
- APPENDIX C: LIST OF MAPS (IN MAP POCKET)**
- APPENDIX D: ASSAY CERTIFICATES**
- APPENDIX E: FIELD NOTES**

LIST OF TABLES AND FIGURES

Figure 1: Location of Island 27 Prospect.....	3
Figure 2: Soil Sample Locations	4
Figure 3: Duplicates Report	6
Figure 4: Standards Report.....	7
Figure 5: Gold Assays Values on Google Earth.....	8
Table 1: Survey Log.....	5

1. SURVEY DETAILS

1.1 PROJECT NAME

This project is known as the **Island 27 Prospect**.

1.2 CLIENT

Golden Valley Mines Ltd.
152 Chemin de la Mine Ecole
Val D'Or, Quebec
J9P 7B6

1.3 LOCATION

The Island 27 Prospect is located approximately 29 km west-southwest of Kirkland Lake, Ontario. The entire survey area is located in Holmes Township, within the Lar-der Lake Mining Division.

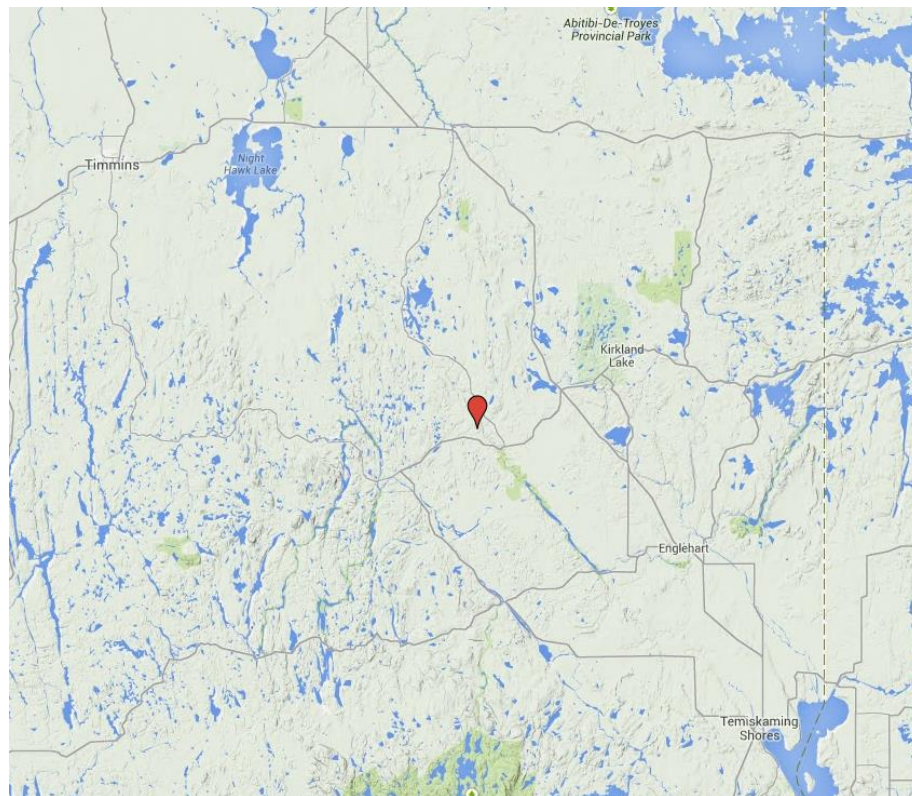


Figure 1: Location of Island 27 Prospect

1.4 ACCESS

Access to the property was attained via Highway 66 approximately 35 kilometers west of its intersection with highway 11. From here, a forestry access road extends northward. This access road was travelled by ATV for 3.5 kilometers to the survey area.

1.5 SURVEY GRID

The traversed lines were established using a GPS in conjunction with the execution of the survey. The soil sampler would establish sample locations. GPS waypoint and soil samples were taken every 25m along these controlled traverses. The GPS used was a Garmin GPSMAP 62s with an external antenna for added accuracy.

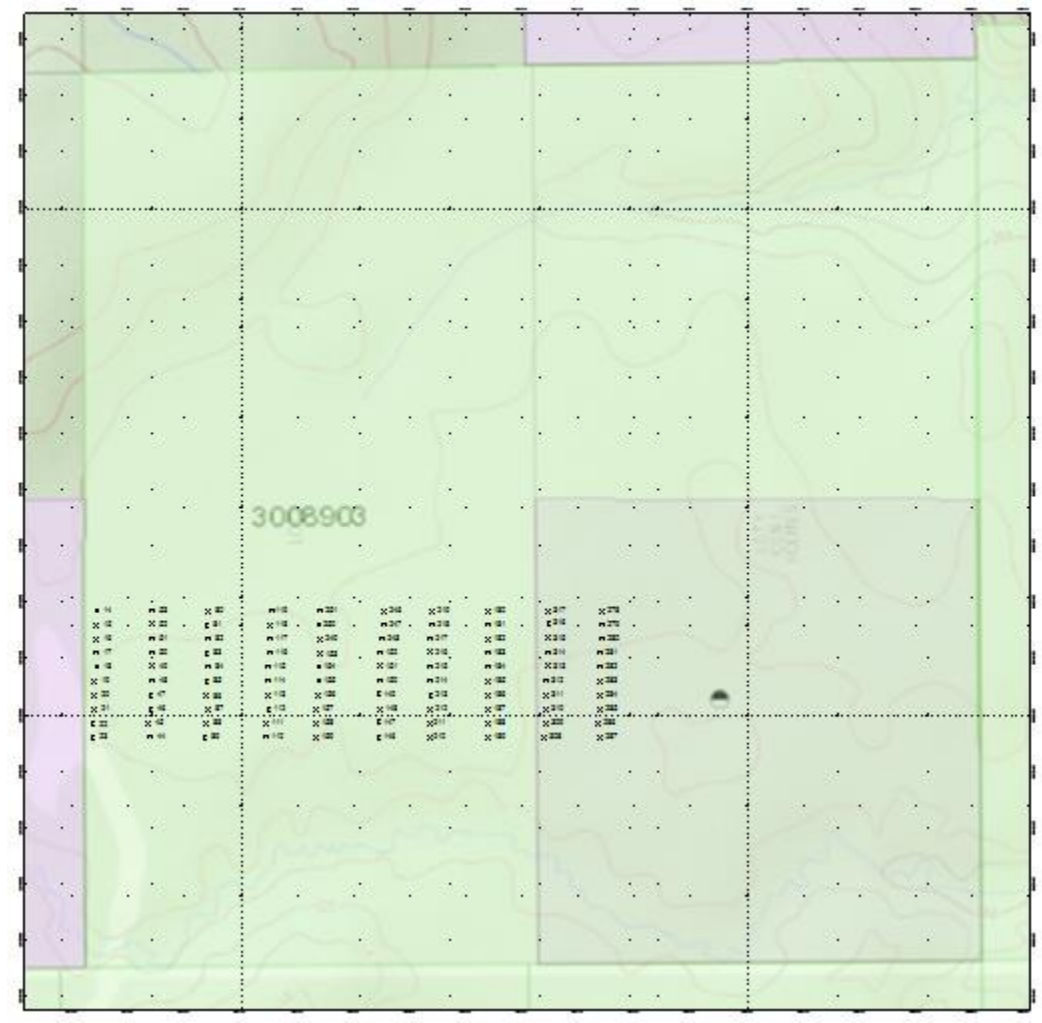


Figure 2: Soil Sample Locations

1. SURVEY WORK UNDERTAKEN

1.1 SURVEY LOG

Date	Description	Line	Min Extent	Max Extent	Total (metres)
October 24, 2016	Locate survey area and begin soil sampling.	0E	650N	875N	225
		100E	650N	875N	225
October 25, 2016	Continue soil sampling	200E	650N	875N	225
		300E	650N	875N	225
		400E	650N	800N	150
		500E	650N	800N	150
October 26, 2016	Continue soil sampling	400E	800N	875N	75
		500E	800N	875N	75
		600E	650N	875N	225
		700E	650N	875N	225
October 27, 2016	Complete the soil sampling	800E	650N	875N	225
		900E	650N	875N	225

Table 1: Survey Log

1.2 PERSONNEL

Bruce Lavalley and Claudia Moraga both of Britt, Ontario conducted all of the sample collection.

1.3 SURVEY SPECIFICATIONS

The grid consisted of ten uncut lines running north south totaling 2.25km. Along these ten lines soil samples were taken every 25m.

Each person worked alone, with samples collected at a pre-determined sample interval (25m). At each sample site a long bright pink ribbon was hung with only the sample number listed in black marker. Below the ribbon the sample is taken.

Using an auger the sample was taken in the "B" Horizon. The media sampled will vary by each site. When the sample is taken the samplers hand is wrapped in a plastic bag while recovering the media to prevent contamination. The media is put in a kraft paper bag which is then contained in a clear zip lock bag. The sample number is recorded on the kraft paper bag. The sample is then put into a packsack for transportation.

While sampling; the site data is recorded on the water resistant soil sample paper. This data includes the sample number, UTM or Grid coordinates, depth at which the sample was taken (measured from surface), horizon, the drainage information (azimuth and slope), the soil color, any notes on site contamination (old car, road, cans etc), and the type of media sampled.

At the end of each day the samples are put into white “rice” bags. These bags are sealed and kept by the crew or dropped off at a predetermined secure location each day. The soil sample sheets are also kept and handed in each day.

A total of 2.25 line kilometers of survey area was covered on the Island 27 Prospect between October 24th and October 27th, 2016. This consisted of 100 soil samples taken at a 25m sample intervals.

The results of analysis obtained from the laboratory were then processed through Geosoft’s Oasis Montaj software.

1.4 DUPLICATES AND STANDARDS

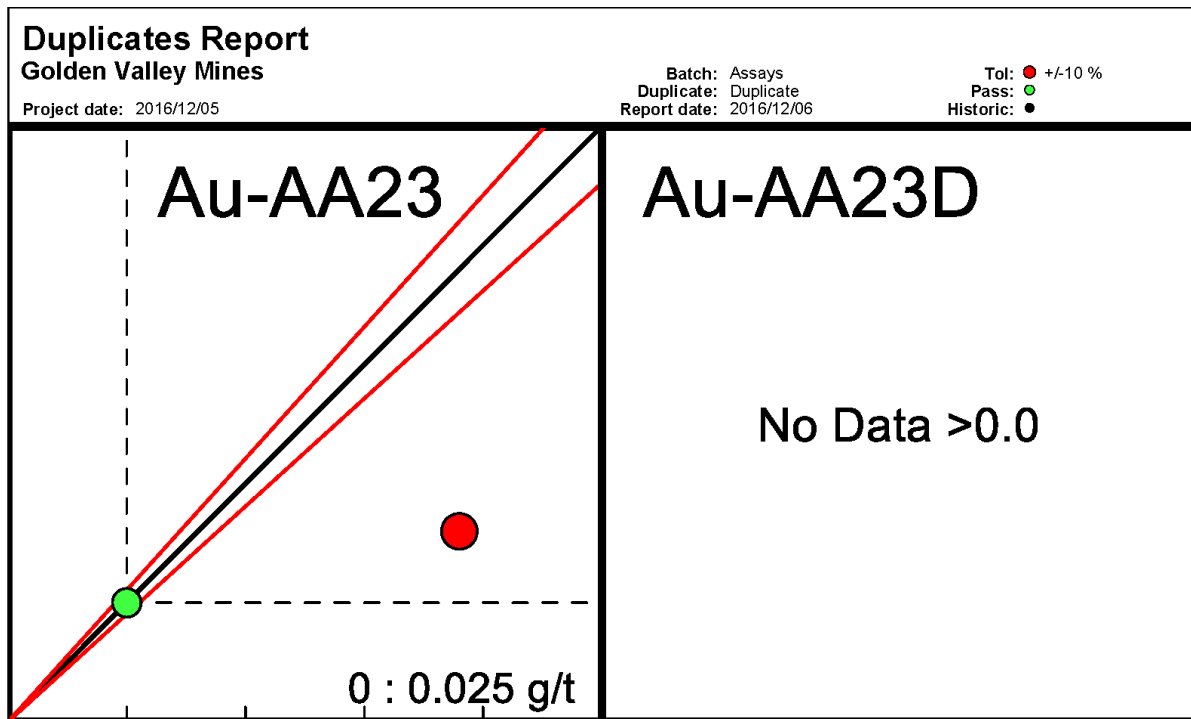


Figure 3: Duplicates Report

Standards Report Golden Valley Mines	
Project date: 2016/12/05	Batch: Assays Standard: STD Report date: 2016/12/06
	Fall: ● Default +/-2 std. dev. Pass: ● Historic: ●
Au-AA23	Au-AA23D
● ● ●	● ●
● ● ● ● ● ● ●	● ● ● ●
mean:2.58 g/t accept: ±7.42 (2 std.dev.)	mean:2.59 g/t accept: ±7.72 (2 std.dev.)

Figure 4: Standards Report

2. OVERVIEW OF SURVEY RESULTS

2.1 SUMMARY INTERPRETATION

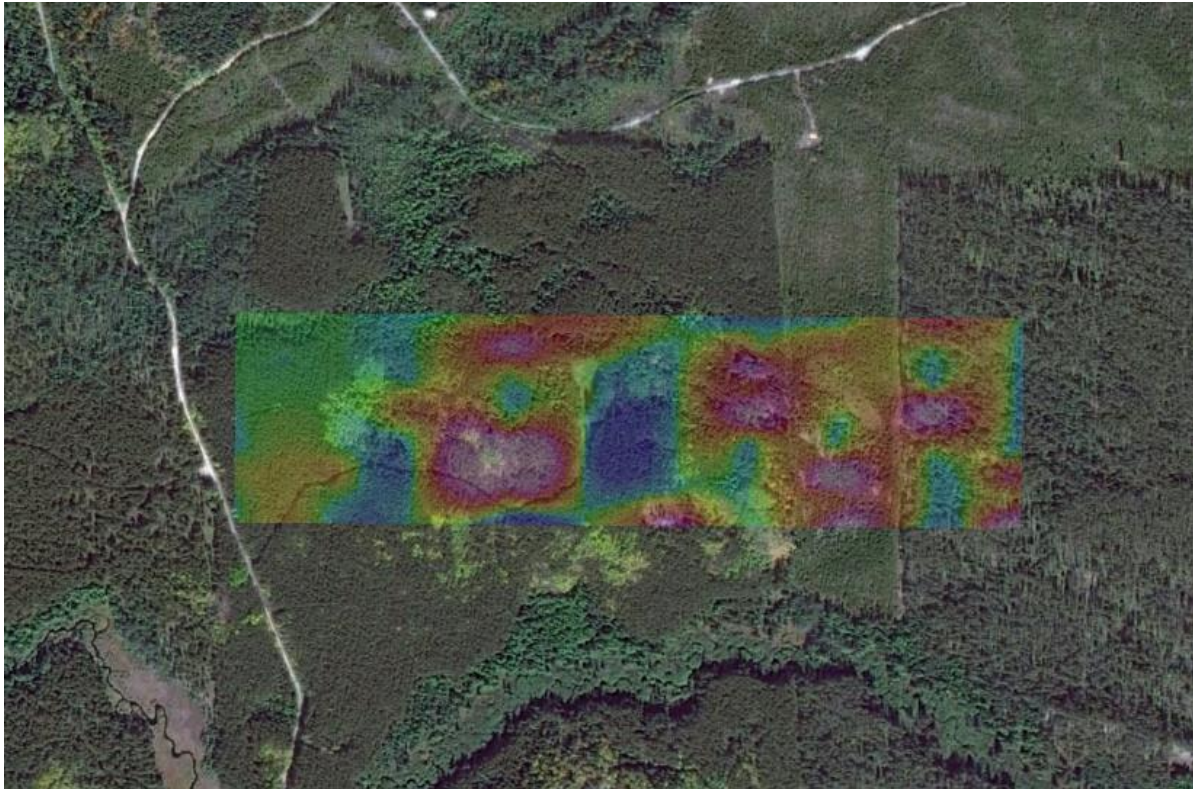


Figure 5: Gold Assays Values on Google Earth

Anomalous gold trends appear to be highlighted from the soil survey. These two trends appear to strike at 115 degrees across the survey area and represent values of 4 to 8 times background.

These may represent mineralized dikes or alteration patterns within the geology below. I would recommend additional soil samples and geophysics to help determine identify targets.

APPENDIX A

STATEMENT OF QUALIFICATIONS

I, C. Jason Ploeger, hereby declare that:

1. I am a professional geophysicist with residence in Larder Lake, Ontario and am presently employed as a Geophysicist and Geophysical Manager of Canadian Exploration Services Ltd. of Larder Lake, Ontario.
2. I am a Practising Member of the Association of Professional Geoscientists, with membership number 2172.
3. I graduated with a Bachelor of Science degree in geophysics from the University of Western Ontario, in London Ontario, in 1999.
4. I have practiced my profession continuously since graduation in Africa, Bulgaria, Canada, Mexico and Mongolia.
5. I am a member of the Ontario Prospectors Association, a Director of the Northern Prospectors Association and a member of the Society of Exploration Geophysicists.
6. I do not have nor expect an interest in the properties and securities of **Golden Valley Mines Limited**.
7. I am responsible for the final processing and validation of the survey results and the compilation of the presentation of this report. The statements made in this report represent my professional opinion based on my consideration of the information available to me at the time of writing this report.



C. Jason Ploeger, P.Geo., B.Sc.
Geophysical Manager
Canadian Exploration Services Ltd.

Larder Lake, ON
December 8, 2016

APPENDIX B

SURVEY PROCEDURES

Each person worked alone, with samples collected at a pre-determined sample interval (50m). At each sample site a long bright pink ribbon was hung with only the sample number listed in black marker. Below the ribbon the sample is taken.

Using an auger or shovel; the sample was taken in the “B” Horizon. The media sampled will vary by each site. When the sample is taken the samplers hand is wrapped in a plastic bag while recovering the media to prevent contamination. The media is put in a kraft paper bag which is then contained in a clear zip lock bag. The sample number is recorded on the kraft paper bag. The sample is then put into a packsack for transportation.

While sampling; the site data is recorded on the water resistant soil sample paper. This data includes the sample number, UTM or Grid coordinates, depth at which the sample was taken (measured from surface), horizon, the drainage information (azimuth and slope), the soil color, any notes on site contamination (old car, road, cans etc), and the type of media sampled.

At the end of each day the samples are put into white “rice” bags. These bags are sealed and kept by the crew or dropped off at a predetermined secure location each day. The soil sample sheets are also kept and handed in each day.

All soil samples and soil sample sheets are compiled by office staff and a shipping manifest is created for shipping to the lab. The samples are stored on site in Larder Lake until picked up by a client representative.

APPENDIX B

GARMIN GPS MAP 62S



Physical & Performance:	
Unit dimensions, WxHxD:	2.4" x 6.3" x 1.4" (6.1 x 16.0 x 3.6 cm)
Display size, WxH:	1.43" x 2.15" (3.6 x 5.5 cm); 2.6" diag (6.6 cm)
Display resolution, WxH:	160 x 240 pixels
Display type:	transflective, 65-K color TFT
Weight:	9.2 oz (260.1 g) with batteries
Battery:	2 AA batteries (not included); NiMH or Lithium recommended
Battery life:	20 hours
Waterproof:	yes (IPX7)
Floats:	no
High-sensitivity receiver:	yes

Interface:	high-speed USB and NMEA 0183 compatible
Maps & Memory:	
Basemap:	yes
Preloaded maps:	no
Ability to add maps:	yes
Built-in memory:	1.7 GB
Accepts data cards:	microSD™ card (not included)
Waypoints/favorites/locations:	2000
Routes:	200
Track log:	10,000 points, 200 saved tracks
Features & Benefits:	
Automatic routing (turn by turn routing on roads):	yes (with optional mapping for detailed roads)
Electronic compass:	yes (tilt-compensated, 3-axis)
Touchscreen:	no
Barometric altimeter:	yes
Camera:	no
<u>Geocaching-friendly:</u>	yes (paperless)
<u>Custom maps compatible:</u>	yes
Photo navigation (navigate to geotagged photos):	yes
Outdoor GPS games:	no
Hunt/fish calendar:	yes
Sun and moon information:	yes

Tide tables:	yes
Area calculation:	yes
Custom POIs (ability to add additional points of interest):	yes
Unit-to-unit transfer (shares data wirelessly with similar units):	yes
Picture viewer:	yes
Garmin Connect™ compatible (online community where you analyze, categorize and share data):	yes

- *Specifications obtained from www.garmin.com*

APPENDIX C

LIST OF MAPS (IN MAP POCKET)

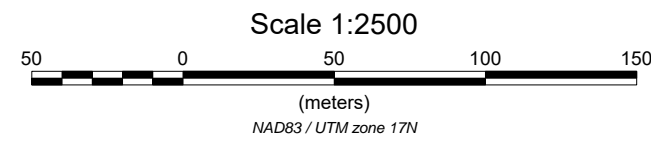
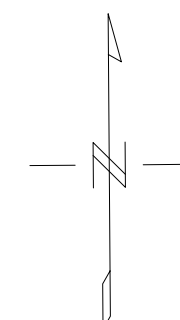
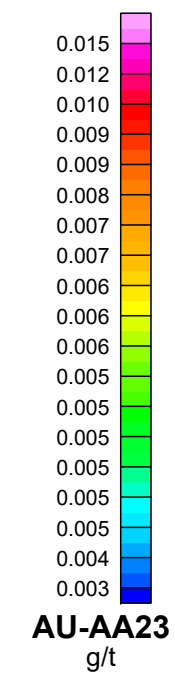
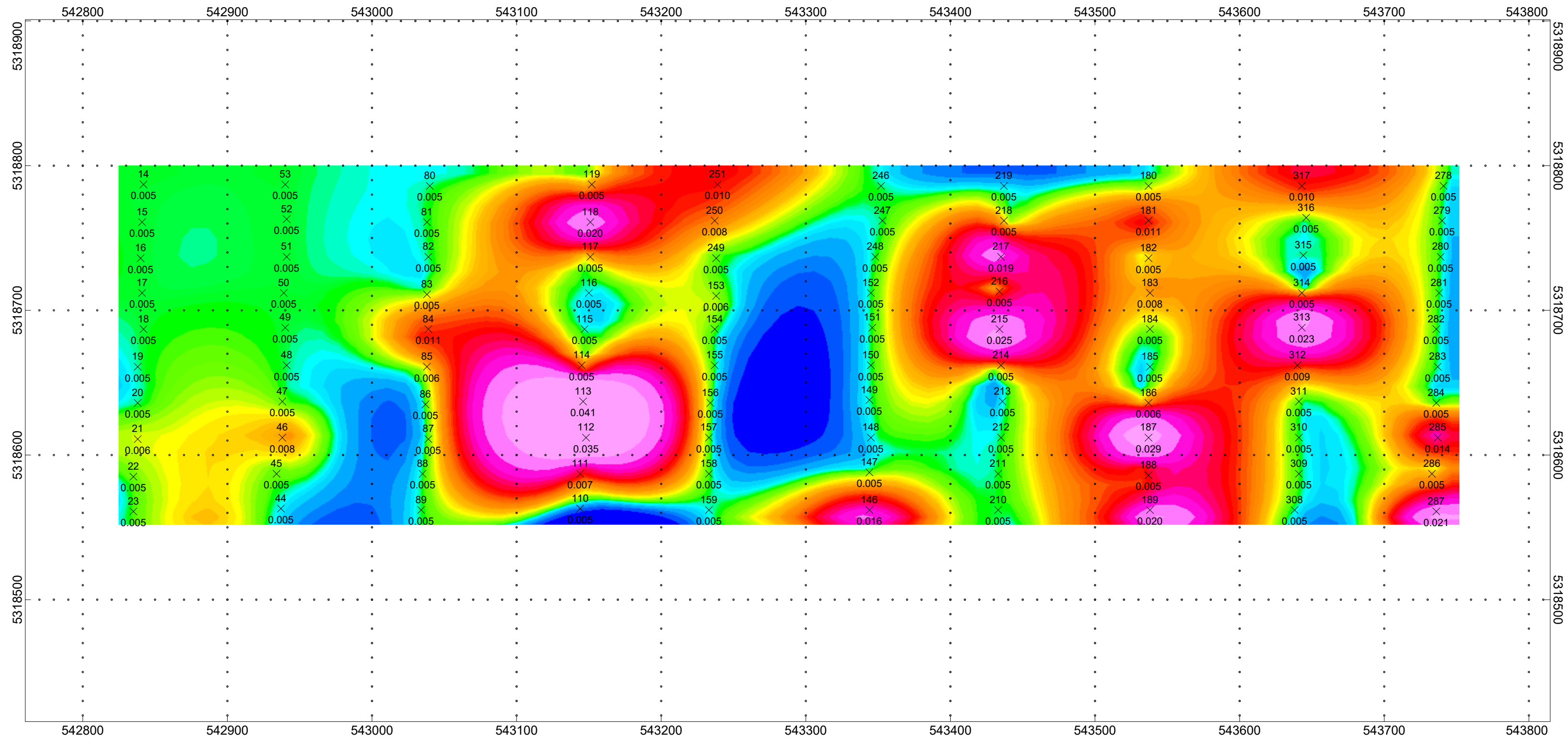
Soil Sampling Results Plan Map (1:2500)

- 1) Q2248-GOLDEN VALLEY-ISLAND 27-SOILS-Au

Soil Sampling Location Plan Map (1:2500)

- 2) Q2248-GOLDEN VALLEY-ISLAND 27-SAMPLE LOCATIONS

TOTAL MAPS = 2



Golden Valley Mines Ltd.
Mines de la Vallée de l'Or Itée

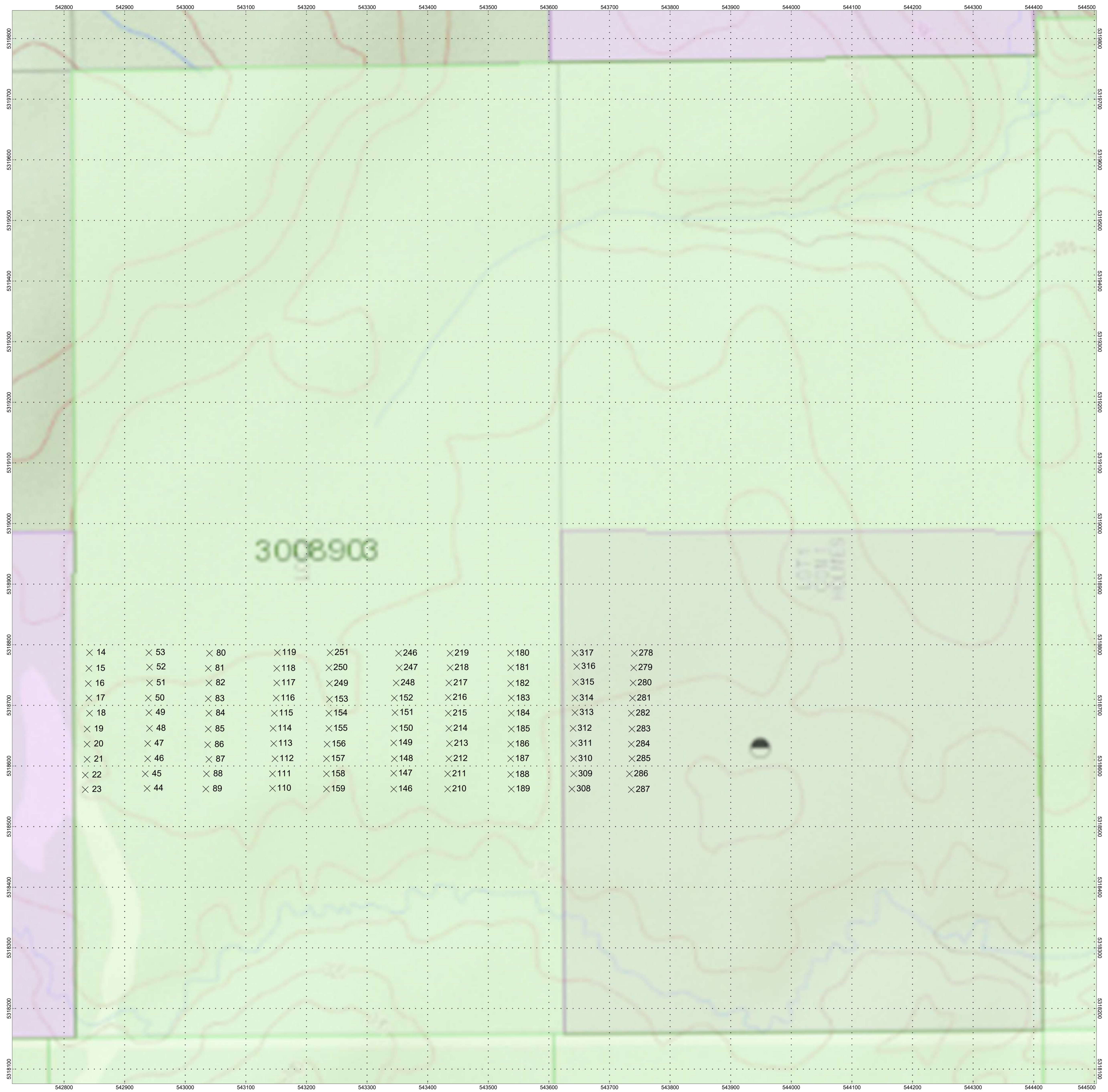
ISLAND 27 PROSPECT
Holmes Township, Ontario

SOIL GEOCHEM PLAN MAP
Gold

sample#
X
assay Au(g/t)

Sample Collection By: Claudia Moraga
and Bruce Lavalley
Processed by: Lisa LaRocque
Map Drawn By: Lisa LaRocque
December 2016



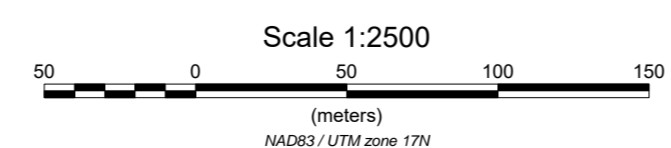


X 14	X 53	X 80	X 119	X 251	X 246	X 219	X 180	X 317	X 278
X 15	X 52	X 81	X 118	X 250	X 247	X 218	X 181	X 316	X 279
X 16	X 51	X 82	X 117	X 249	X 248	X 217	X 182	X 315	X 280
X 17	X 50	X 83	X 116	X 153	X 152	X 216	X 183	X 314	X 281
X 18	X 49	X 84	X 115	X 154	X 151	X 215	X 184	X 313	X 282
X 19	X 48	X 85	X 114	X 155	X 150	X 214	X 185	X 312	X 283
X 20	X 47	X 86	X 113	X 156	X 149	X 213	X 186	X 311	X 284
X 21	X 46	X 87	X 112	X 157	X 148	X 212	X 187	X 310	X 285
X 22	X 45	X 88	X 111	X 158	X 147	X 211	X 188	X 309	X 286
X 23	X 44	X 89	X 110	X 159	X 146	X 210	X 189	X 308	X 287



ISLAND 27 PROSPECT
Holmes Township, Ontario

SOIL SAMPLE LOCATION PLAN MAP





Soil Sampling
Island 27 Prospect
Holmes Township, Ontario



Golden Valley Mines Ltd.
Mines de la Vallée de l'Or Itée

APPENDIX D

ASSAY CERTIFICATES



APPENDIX E

FIELD NOTES



P.O. Box 219
 14579 Government Road
 Larder Lake, Ontario, Canada, P0K 1L0
 Tel: (705) 643-2345 Fax: (705) 643-2191

Client: Golden Valley Project: Q2248

Date of Survey: Oct 24/16 Survey Personnel: Bruce and Claudia

Sample #	Depth (cm)	Soil Horizon	Drainage		Soil Color	Contam.	Soil Material					Other Notes	
			Az*	Slope			Clay	Silt	Sand	Gravel	Organic		
1	001	20	B	—	—	Light BRN	TRAIL	—	—	✓	—	—	SAID OF TRAIL
2	002	20	B	—	—	Light BRN	—	—	—	✓	—	—	OLD CUT
3	003	30	B	—	—	GREY-BRN	—	—	✓	✓	—	—	OLD CUT
4	004	20	B	—	—	BRN	—	—	—	✓	—	—	OLD CUT
5	005	70	B	—	—	BRN	—	—	✓	✓	—	—	OLD CUT
6	006	40	B	—	—	BRN	—	—	✓	✓	—	—	
7	007	30	B	—	—	BRN/GRY	—	—	—	✓	—	—	
8	008	30	B	—	—	BRN/GRY	—	—	—	✓	—	—	MATURE SPRUCE / J. PINE
9	009	20	B	—	—	BRN	—	—	—	✓	—	—	
10	010	20	B	—	—	BRN	—	—	—	✓	—	—	
11	011	20	B	—	—	BRN	—	—	—	✓	—	—	
12	012	20	B	—	—	BRN	—	—	✓	✓	—	—	
13	013	25	B	—	—	BRN	—	—	✓	✓	—	—	
14	014	70	B	—	—	BRN	—	—	✓	—	—	—	
15	015	20	B	—	—	BRN	—	—	—	✓	—	—	
16	016	15	B	N	2	BRN	—	—	—	✓	—	—	
17	017	15	B	S	2	BRN	—	—	—	✓	—	—	
18	018	15	B	—	—	BRN	—	—	—	✓	—	—	
19	019	15	B	—	—	BRN	—	—	—	✓	—	—	
20	020	20	B	—	—	BRN	—	—	—	✓	—	—	
21	021	20	B	—	—	BRN	—	—	—	✓	—	—	
22	022	15	B	—	—	BRN	—	—	—	✓	—	—	
23	023	20	B	—	—	BRN	—	—	—	✓	—	—	
24	024	20	B	—	—	BRN	—	—	—	✓	—	—	
25	025	5	B	—	—	BRN	TRAIL	—	—	✓	—	—	SIDE OF TRAIL
26	026	5	B	—	—	BRN	—	—	—	✓	—	—	
27	027	20	B	—	—	BRN	—	—	—	✓	—	—	
28	028	20	B	—	—	BRN	—	—	—	✓	—	—	
29	029	20	B	—	—	BRN	—	—	—	✓	—	—	
30	030	20	B	—	—	BRN	—	—	—	✓	—	—	



P.O. Box 219
 14579 Government Road
 Larder Lake, Ontario, Canada, P0K 1L0
 Tel: (705) 643-2345 Fax: (705) 643-2191

Client: Golden Valley Project: Q 2248
 Date of Survey: Oct 24/16 Survey Personnel: Bruce and Claudia

Sample #	Depth (cm)	Soil Horizon	Drainage		Soil Color	Contam.	Soil Material					Other Notes	
			Az*	Slope			Clay	Silt	Sand	Gravel	Organic		
1	031	20	B	-	-	BRN	-	-	-	✓	-	-	
2	032	25	B	-	-	GRY/BRN	-	-	✓	✓	-	-	
3	033	15	B	N	Z	BRN	-	-	-	✓	-	-	
4	034	15	B	-	-	BRN	-	-	-	✓	-	-	
5	035	15	B	-	-	BRN	-	-	-	✓	-	-	
6	036	20	B	-	-	GRY/BRN	-	-	-	✓	-	-	
7	037	25	B	-	-	BRN	-	-	-	✓	-	-	
8	038	25	B	-	-	BRN	-	-	-	✓	-	-	
9	039	10	B	-	-	BRN	-	-	-	✓	-	-	
10	040	20	B	-	-	BRN	-	-	-	✓	-	-	
11	041	20	B	-	-	BRN	-	-	-	✓	-	-	
12	042	10	B	S	1	BRN	-	-	-	✓	-	-	
13	043	20	B	-	-	BRN	-	-	-	✓	-	-	
14	044	25	B	S	1	GRY/BRN	-	-	-	✓	-	-	
15	045	20	B	-	-	BRN	-	-	-	✓	-	-	
16	046	5	B	-	-	BRN	-	-	-	✓	-	-	DRILL TRAIL
17	047	20	B	NE	1	BRN	-	-	-	✓	-	-	
18	048	20	B	-	-	BRN	-	-	✓	✓	-	-	MATURE POPLAR
19	049	20	B	-	-	BRN/GRY	-	-	✓	✓	-	-	MATURE POPLAR
20	050	20	B	-	-	BRN	-	-	-	✓	-	-	
21	051	20	B	N	1	BRN	-	-	-	✓	-	-	MATURE SPRUCE/JPINE
22	052	20	B	-	-	BRN	-	-	-	✓	-	-	MATURE SPRUCE/JPINE
23	053	20	B	-	-	BRN	-	-	-	✓	-	-	1/0 1/0 1/0
24	054	20	B	S	1	GRY/BRN	-	-	✓	✓	-	-	0/0 0/0 0/0
25	055	15	B	-	-	BRN	-	-	-	✓	-	-	1/0 1/0 1/0
26	056	20	B	-	-	BRN	-	-	-	✓	-	-	1/0 1/0 1/0
27	057	10	B	-	-	BRN	-	-	-	✓	-	-	1/0 1/0 1/0
28	058	25	B	-	-	BRN	-	-	-	✓	-	-	1/0 1/0 1/0
29	059	5	B	-	-	BRN	-	-	-	✓	-	-	DRILL PATH
30	060	5	B	-	-	BRN	-	-	-	✓	-	-	MATURE SPRUCE/S. PINE DRILL TRAIL



P.O. Box 219
 14579 Government Road
 Larder Lake, Ontario, Canada, P0K 1L0
 Tel: (705) 643-2345 Fax: (705) 643-2191

Client: Golden Valley Project: Q 2248

Date of Survey: Oct 25/16 Survey Personnel: Bruce and Claudia

Sample #	Depth (cm)	Soil Horizon	Drainage		Soil Color	Contam.	Soil Material					Other Notes	
			Az*	Slope			Clay	Silt	Sand	Gravel	Organic		
1	072	100	B	—	—	GRY	—	—	✓	—	—	—	MATURE SPRUCE / J. PINE
2	073	70	B	—	—	GRY	—	—	✓	—	—	—	MATURE SPRUCE / J. PINE
3	074	20	B	—	—	BRN	—	—	—	✓	—	—	DRILL PATH (MISSED SAMPLE FROM OCT. 24)
4	075	—	B	—	—	—	—	—	—	—	—	—	MATURE SPRUCE / J. PINE / NO SAMPLE
5	076	130	B	—	—	GRY	—	—	✓	—	—	—	MATURE SPRUCE / J. PINE
6	077	60	B	—	—	BRN	—	—	✓	✓	—	—	MATURE SPRUCE / J. PINE
7	078	20	B	—	—	BRN	—	—	—	✓	—	—	1/0 1/0
8	079	50	B	—	—	BRN	—	—	✓	✓	—	—	0/0 1/0
9	080	25	B	—	—	BRN	—	—	—	✓	—	—	0/0 1/0
10	081	20	B	—	—	BRN	—	—	—	✓	—	—	1/0 1/0
11	082	10	B	—	—	BRN	—	—	—	✓	—	—	0/0 1/0
12	083	20	B	—	—	BRN	—	—	—	✓	—	—	0/0 1/0
13	084	20	B	—	—	BRN	—	—	—	✓	—	—	MATURE POPLAR
14	085	20	B	—	—	BRN	—	—	—	✓	—	—	MATURE POPLAR
15	086	20	B	—	—	BRN	—	—	—	✓	—	—	MATURE POPLAR / ROCKY
16	087	20	B	N	1	BRN	—	—	—	✓	—	—	MATURE POPLAR
17	088	20	B	N	1	BRN	—	—	—	✓	—	—	MATURE JACK PINE / SPRUCE
18	089	20	B	—	—	BRN	—	—	—	✓	—	—	MATURE SPRUCE / J. PINE
19	090	15	B	S	2	BRN	—	—	—	✓	—	—	0/0 0/0
20	091	20	B	—	—	BRN	—	—	—	✓	—	—	0/0 0/0
21	092	5	B	S	1	BRN	—	—	—	✓	—	—	0/0 1/0
22	093	20	B	—	—	BRN	—	—	—	✓	—	—	0/0 0/0
23	094	20	B	—	—	BRN	—	—	—	✓	—	—	0/0 1/1
24	095	20	B	—	—	BRN	—	—	✓	✓	—	—	0/0 1/1
25	096	5	B	—	—	BRN	—	—	✓	✓	—	—	0/0 0/0
26	097	15	B	—	—	BRN	—	—	—	✓	—	—	0/0 0/0
27	098	70	B	—	—	GRY	—	—	✓	—	—	—	0/0 0/0
28	099	50	B	—	—	GRY	—	—	✓	—	—	—	0/0 0/0
29	100	—	B	—	—	—	—	—	—	—	—	—	NO SAMPLE - CLARK
30	101	5	B	—	—	GRY	—	—	—	✓	—	—	SWAMP ALONG / CREEK BANK



P.O. Box 219
 14579 Government Road
 Larder Lake, Ontario, Canada, P0K 1L0
 Tel: (705) 643-2345 Fax: (705) 643-2191

Client: Golden Valley Project: Q 2248

Date of Survey: OCT 25/16 Survey Personnel: Bruce and claudia

Sample #	Depth (cm)	Soil Horizon	Drainage		Soil Color	Contam.	Soil Material					Other Notes	
			Az*	Slope			Clay	Silt	Sand	Gravel	Organic		
1	102	40	B	—	—	GRY	—	—	✓	✓	—	—	SIDE CREEK
2	103	50	B	—	—	GRY	—	—	✓	—	—	—	MATURE SPRUCE / J. PINE
3	104	50	B	—	—	GRY	—	—	✓	—	—	—	
4	105	30	B	S	+	BRN	—	—	—	✓	—	—	1/0 1/0
5	106	20	B	S	+	BRN	—	—	—	✓	—	—	1/0 1/0
6	107	5	B	S	1	BRN	—	—	—	✓	—	—	1/0 1/1
7	108	20	B	S	1	BRN	—	—	—	✓	—	—	1/0 1/0
8	109	20	B	S	2	BRN	—	—	✓	✓	—	—	1/0 0/0 + POPLAR
9	110	20	B	S	2	BRN	—	—	—	✓	—	—	1/0 1/0
10	111	30	B	—	—	BRN	—	—	✓	✓	—	—	1/0 1/0 + POPLAR
11	112	20	B	N	1	BRN	—	—	✓	—	—	—	1/0 1/0 + POPLAR
12	113	20	B	—	—	BRN	—	—	✓	✓	—	—	1/0 1/0 + POPLAR
13	114	20	B	—	—	BRN	—	—	✓	✓	—	—	1/0 1/0 + POPLAR
14	115	20	B	—	—	BRN	—	—	✓	✓	—	—	1/0 1/0 + POPLAR
15	116	20	B	—	—	BRN	—	—	✓	✓	—	—	1/0 1/0
16	117	10	B	—	—	BRN	—	—	—	✓	—	—	1/0 1/1
17	118	25	B	—	—	BRN	—	—	✓	✓	—	—	1/0 1/1
18	119	20	B	—	—	BRN	—	—	✓	✓	—	—	1/0 1/0
19	120	20	B	—	—	BRN	—	—	—	✓	—	—	1/0 1/1
20	121	30	B	—	—	BRN	—	—	—	✓	—	—	1/0 1/0
21	122	50	B	—	—	BRN	—	—	—	✓	—	—	1/0 1/0
22	123	30	B	—	—	BRN	—	—	✓	✓	—	—	1/0 1/0
23	124	30	B	—	—	BRN	—	—	✓	✓	—	—	1/0 1/0
24	125	20	B	—	—	BRN	—	—	✓	✓	—	—	1/0 1/1
25	126	10	B	—	—	BRN	—	—	—	✓	—	—	1/0 1/1
26	127	40	B	—	—	BRN	—	—	✓	—	—	—	FLOADED / SWAMP
27	128	—	B	—	—	—	—	—	—	—	—	—	NO SAMPLE
28	129	130	B	—	—	GRY	—	—	✓	—	—	—	MATURE SPRUCE / J. PINE / ALDER
29	130	—	B	—	—	—	—	—	✓	✓	—	—	NO SAMPLE
30	131	30	B	—	—	GRY/BRN	—	—	✓	✓	—	—	MATURE SPRUCE / J. PINE



P.O. Box 219
 14579 Government Road
 Larder Lake, Ontario, Canada, P0K 1L0
 Tel: (705) 643-2345 Fax: (705) 643-2191

Client: Golden Valley Project: Q2248

Date of Survey: Oct 25/16 Survey Personnel: Grace and Claudia

Sample #	Depth (cm)	Soil Horizon	Drainage		Soil Color	Contam.	Soil Material					Other Notes	
			Az*	Slope			Clay	Silt	Sand	Gravel	Organic		
1	132	20	B	—	—	GRY	—	—	✓	✓	—	—	SPRUCE
2	133	20	B	N	2	BRN	—	—	✓	✓	—	—	MIX BUSH
3	134	20	B	N	3	BRN	—	—	—	✓	—	—	MATURE SPRUCE / J. PINE
4	135	20	B	—	—	GRY/BRN	—	—	✓	✓	—	—	CREEK BANK
5	136	15	D	—	—	BRN	—	—	—	✓	—	—	MATURE SPRUCE / J. PINE / ALDER
6	137	30	B	—	—	GRY/BRN	—	—	✓	✓	—	—	FLOOD PLAIN
7	138	30	B	—	—	GRY/BRN	—	—	✓	✓	—	—	CREEK BANK
8	139	30	B	—	—	GRY/BRN	—	—	✓	✓	—	—	CREEK BANK
9	140	40	B	—	—	GRY	—	✓	✓	—	—	—	FLOOD PLAIN
10	141	15	B	—	—	BRN	—	—	—	✓	—	—	MATURE SPRUCE / J. PINE
11	142	15	B	—	—	BRN	—	—	—	✓	—	—	% %
12	143	15	D	—	—	BRN	—	—	—	✓	—	—	% %
13	144	20	B	S	1	BRN	—	—	—	✓	—	—	% %
14	145	15	B	S	1	GRY/BRN	—	—	✓	✓	—	—	% % / ROCKY
15	146	15	B	—	—	GRY/BRN	—	—	✓	✓	—	—	% % / ROCKY
16	147	25	B	—	—	BRN	—	—	✓	✓	—	—	% %
17	148	30	B	—	—	BRN	—	—	—	✓	—	—	MATURE POPULR
18	149	20	B	—	—	BRN	—	—	—	✓	—	—	MATURE SPRUCE / J. PINE / POPULR
19	150	15	D	N	1	BRN	—	—	—	✓	—	—	% % %
20	151	40	B	—	—	GRY/BRN	—	—	✓	✓	—	—	MATURE SPRUCE / J. PINE
21	152	40	D	—	—	GRY/BRN	—	—	✓	✓	—	—	% %
22	153	30	B	—	—	GRY/BRN	—	—	✓	✓	—	—	DRILL ROAD
23	154	20	B	—	—	BRN	—	—	✓	✓	—	—	DRILL ROAD
24	155	5	D	—	—	BRN	—	—	—	✓	—	—	DRILL PATH
25	156	20	B	N	1	BRN	—	—	—	✓	—	—	DRILL ROAD
26	157	20	B	S	1	BRN	—	—	—	✓	—	—	MATURE SPRUCE / J. PINE
27	158	15	B	N	1	BRN	—	—	—	✓	—	—	% %
28	159	20	D	S	1	GRY/BRN	—	—	✓	✓	—	—	% %
29	160	30	B	—	—	BRN	—	—	✓	✓	—	—	MATURE POPULR
30	161	30	B	—	—	BRN	—	—	✓	✓	—	—	% %



P.O. Box 219
 14579 Government Road
 Larder Lake, Ontario, Canada, P0K 1L0
 Tel: (705) 643-2345 Fax: (705) 643-2191

Client: Golden Valley Project: Q 2248

Date of Survey: Oct 26/16 Survey Personnel: Bruce and Claudia

Sample #	Depth (cm)	Soil Horizon	Drainage		Soil Color	Contam.	Soil Material					Other Notes	
			Az*	Slope			Clay	Silt	Sand	Gravel	Organic		
1	167	10	B	—	—	BRN	—	—	—	✓	—	—	J. PINE PLANTATION
2	168	15	B	—	—	BRN	—	—	—	✓	—	—	1/0 1/0
3	169	15	B	—	—	BRN	—	—	—	✓	—	—	1/0 1/0
4	170	10	B	—	—	BRN	—	—	—	✓	—	—	1/0 1/0
5	171	10	B	—	—	BRN	—	—	—	✓	—	—	1/1 1/0
6	172	15	B	—	—	BRN	—	—	—	✓	—	—	1/0 1/0
7	173	20	B	—	—	BRN	—	—	—	✓	—	—	1/0 1/0
8	174	5	B	—	—	BRN	—	—	—	✓	—	—	1/0 1/0
9	175	5	B	—	—	BRN	—	—	—	✓	—	—	1/0 1/0
10	176	10	B	—	—	BRN	—	—	—	✓	—	—	1/0 1/0
11	177	20	B	—	—	BRN	—	—	—	✓	—	—	1/0 1/0
12	178	5	B	—	—	BRN	—	—	—	✓	—	—	1/0 1/0
13	179	30	B	—	—	GRY/BRN	—	—	—	✓	—	—	1/0 1/0
14	180	20	B	—	—	BRN	—	—	—	✓	—	—	1/0 1/0
15	181	15	B	—	—	BRN	—	—	—	✓	—	—	1/0 1/0
16	182	30	B	—	—	GRY	—	—	✓	✓	—	—	ALDER
17	183	20	B	—	—	GRY/BRN	—	—	✓	✓	—	—	ALDER
18	184	20	B	—	—	GRY	—	—	✓	—	—	—	ALDER
19	185	20	B	—	—	BRN	—	—	✓	—	—	—	J. PINE PLANTATION
20	186	20	B	—	—	BRN	—	—	—	✓	—	—	1/0 1/0
21	187	20	B	—	—	BRN	—	—	—	✓	—	—	1/0 1/0
22	188	20	B	—	—	BRN	—	—	—	✓	—	—	1/0 1/0
23	189	20	B	—	—	GRY/BRN	—	—	✓	✓	—	—	1/0 1/0
24	190	15	B	—	—	BRN	—	—	✓	✓	—	—	1/0 1/0
25	191	30	B	5	1	GRY/BRN	—	—	✓	✓	—	—	1/0 1/0
26	192	30	B	5	1	BRN	—	—	—	✓	—	—	1/0 1/0
27	193	20	B	5	2	BRN	—	—	—	✓	—	—	1/0 1/0
28	194	30	B	—	—	BRN	—	—	✓	✓	—	—	MATURE SPRUCE / J. PINE
29	195	40	B	—	—	GRY/BRN	—	—	✓	✓	—	—	1/0 1/0
30	196	20	B	—	—	BRN	—	—	—	✓	—	—	CREEK BANK



P.O. Box 219
 14579 Government Road
 Larder Lake, Ontario, Canada, P0K 1L0
 Tel: (705) 643-2345 Fax: (705) 643-2191

Client: Golden Valley Project: Q 2248

Date of Survey: Oct 20/16 Survey Personnel: Bruce and Claudia

Sample #	Depth (cm)	Soil Horizon	Drainage		Soil Color	Contam.	Soil Material					Other Notes	
			Az*	Slope			Clay	Silt	Sand	Gravel	Organic		
1	197	20	B	—	—	BRN	—	—	—	✓	—	—	MATURE SPRUCE / J. PINE
2	198	20	B	—	—	BRN	—	—	—	✓	—	—	MATURE SPRUCE / J. PINE
3	199	15	B	—	—	BRN	—	—	—	✓	—	—	% %
4	200	20	B	—	—	BRN	—	—	✓	✓	—	—	% %
5	201	20	B	—	—	BRN	—	—	✓	✓	—	—	% %
6	202	20	B	—	—	BRN	—	—	✓	✓	—	—	% %
7	203	20	B	—	—	GRY	—	—	✓	✓	—	—	FLOOD PLAIN
8	204	10	B	—	—	GRY/BRN	—	—	—	✓	—	—	CREEK BANK
9	205	20	B	—	—	GRY/BRN	—	—	✓	✓	—	—	MATURE SPRUCE / J. PINE
10	206	20	B	S	1	BRN	—	—	—	✓	—	—	% %
11	207	20	B	S	+	BRN	—	—	—	✓	—	—	% %
12	208	20	B	S	+	BRN	—	—	—	✓	—	—	MATURE POPLAR
13	209	20	B	S	+	GRY	—	—	✓	✓	—	—	% %
14	210	20	B	S	0	GRY/BRN	—	—	—	✓	—	—	% %
15	211	20	B	—	—	BRN	—	—	—	✓	—	—	% %
16	212	30	B	—	—	GRY/BRN	—	—	—	✓	✓	—	MATURE SPRUCE / J. PINE / POPLAR
17	213	20	B	—	—	BRN	—	—	—	✓	—	—	% % %
18	214	20	B	—	—	BRN	—	—	—	✓	—	—	% % %
19	215	20	B	—	—	BRN	—	—	—	✓	—	—	% % %
20	216	20	B	—	—	BRN	—	—	—	✓	—	—	% % %
21	217	20	B	—	—	BRN	—	—	—	✓	—	—	% % %
22	218	30	B	S	1	BRN	—	—	—	✓	—	—	% % %
23	219	30	B	—	—	BRN	—	—	—	✓	—	—	% %
24	220	20	B	—	—	GRY	—	—	—	✓	—	—	% %
25	221	10	B	—	—	BRN	—	—	—	✓	—	—	% %
26	222	20	B	—	—	BRN	—	—	—	✓	—	—	% %
27	223	20	B	—	—	BRN	—	—	—	✓	—	—	% %
28	224	30	B	—	—	BRN	—	—	—	✓	✓	—	% %
29	225	15	B	—	—	BRN	—	—	—	✓	—	—	% %
30	226	10	B	—	—	BRN	—	—	—	✓	—	—	% %



P.O. Box 219
 14579 Government Road
 Larder Lake, Ontario, Canada, P0K 1L0
 Tel: (705) 643-2345 Fax: (705) 643-2191

Client: Golden Valley Project: Q2248

Date of Survey: Oct 26/16 Survey Personnel: Bruce and Claudia

Sample #	Depth (cm)	Soil Horizon	Drainage		Soil Color	Contam.	Soil Material					Other Notes	
			Az*	Slope			Clay	Silt	Sand	Gravel	Organic		
1	227	20	B	-	-	BRN	-	-	-	✓	-	-	MATURE SPRUCE / J. PINE
2	228	20	B	-	-	BRN	-	-	✓	✓	-	-	J. PINE PLANTATION
3	229	20	B	-	-	BRN	-	-	✓	✓	-	-	0/0
4	230	30	B	-	-	BRN	-	-	-	✓	-	-	0/0
5	231	30	B	-	-	BRN	-	-	-	✓	-	-	0/0
6	232	20	B	-	-	BRN	-	-	-	✓	-	-	0/0
7	233	20	B	-	-	BRN	-	-	-	✓	-	-	ALDER
8	234	30	B	-	-	GRY/BRN	-	-	-	✓	-	-	ALDER
9	235	30	B	-	-	GRY/BRN	-	-	-	✓	-	-	0/0
10	236	20	B	-	-	GRY/BRN	-	-	-	✓	-	-	0/0
11	237	40	B	-	-	GRY/BRN	-	-	-	✓	-	-	SPRUCE
12	238	30	B	-	-	BRN	-	-	✓	✓	-	-	SPRUCE / J. PINE MATURE
13	239	20	B	-	-	BRN	-	-	✓	✓	-	-	MATURE SPRUCE / J. PINE
14	240	20	B	-	-	BRN	-	-	-	✓	-	-	0/0 0/0
15	241	20	B	-	-	BRN	-	-	-	✓	-	-	0/0 0/0
16	242	20	B	-	-	BRN	-	-	-	✓	-	-	0/0 0/0
17	243	20	B	-	-	BRN	-	-	-	✓	-	-	0/0 0/0
18	244	40	B	-	-	BRN	-	-	-	✓	-	-	0/0 0/0
19	245	30	B	-	-	GRY/BRN	-	-	✓	✓	-	-	0/0 0/0
20	246	20	B	-	-	BRN	-	-	-	✓	-	-	0/0 0/0
21	247	30	B	-	-	GRY/BRN	-	-	✓	✓	-	-	0/0 0/0
22	248	20	B	-	-	GRY/BRN	-	-	✓	✓	-	-	0/0 0/0
23	249	5	B	-	-	BRN	-	-	-	✓	-	-	DRAW PATH
24	250	20	B	-	-	BRN	-	-	-	✓	-	-	MATURE SPRUCE / J. PINE
25	251	30	B	-	-	GRY	-	-	✓	✓	-	-	0/0 0/0 0/0
26	252	25	B	-	-	BRN	-	-	-	✓	-	-	0/0 0/0 0/0
27	253	20	B	-	-	BRN	-	-	-	✓	-	-	0/0 0/0 0/0
28	254	20	B	-	-	BRN	-	-	-	✓	-	-	0/0 0/0 0/0
29	255	30	B	-	-	BRN	-	-	✓	✓	-	-	0/0 0/0 0/0
30	256	20	B	-	-	GRY/BRN	-	-	✓	✓	-	-	0/0 0/0 0/0



P.O. Box 219
 14579 Government Road
 Larder Lake, Ontario, Canada, P0K 1L0
 Tel: (705) 643-2345 Fax: (705) 643-2191

Client: Golden Valley Project: Q 2248
 Date of Survey: Oct 27/16 Survey Personnel: Bruce and Claudia

Sample #	Depth (cm)	Soil Horizon	Drainage		Soil Color	Contam.	Soil Material					Other Notes	
			Az*	Slope			Clay	Silt	Sand	Gravel	Organic		
1	265	B	—	—	BRN	—	—	—	✓	—	—	J. PINE PLANTATION	
2	266	B	—	—	BRN	—	—	—	✓	—	—	0/0	0/0
3	267	B	NE	1	BRN	—	—	—	✓	—	—	0/0	0/0
4	268	B	—	—	BRN	—	—	—	✓	—	—	0/0	0/0
5	269	B	—	—	BRN	—	—	—	✓	—	—	0/0	0/0
6	270	B	—	—	BRN	—	—	—	✓	—	—	0/0	0/0
7	271	B	—	—	BRN	—	—	—	✓	—	—	0/0	0/0
8	272	B	—	—	BRN	—	—	✓	✓	—	—	0/0	0/0
9	273	B	—	—	BRN	—	—	✓	✓	—	—	NO TURE	SPRUCE / J. PINE
10	274	B	—	—	BRN	—	—	✓	✓	—	—	0/0	0/0
11	275	B	—	—	BRN	—	—	—	✓	—	—	0/0	0/0
12	276	B	—	—	BRN	—	—	✓	✓	—	—	0/0	0/0
13	277	B	—	—	BRN	—	—	—	✓	—	—	0/0	0/0
14	278	B	—	—	BRN	—	—	—	✓	—	—	0/0	0/0
15	279	B	—	—	BRN	—	—	—	✓	—	—	0/0	0/0
16	280	B	—	—	BRN	—	—	✓	✓	—	—	0/0	0/0
17	281	B	—	—	BRN	—	—	✓	✓	—	—	0/0	0/0
18	282	B	—	—	BRN	—	—	✓	✓	—	—	0/0	0/0
19	283	B	—	—	BRN	—	—	—	✓	—	—	0/0	0/0
20	284	B	—	—	GRY/BRN	—	—	—	✓	—	—	0/0	0/0
21	285	B	—	—	GRY/BRN	—	—	—	✓	—	—	0/0	0/0
22	286	B	E	1	GRY/BRN	—	—	—	✓	—	—	0/0	0/0
23	287	B	SE	1	BRN	—	—	—	✓	—	—	0/0	0/0
24	288	B	—	—	BRN	—	—	—	✓	—	—	0/0	0/0
25	289	B	S	1	BRN	—	—	✓	✓	—	—	0/0	0/0
26	290	B	—	—	BRN	—	—	—	✓	—	—	0/0	0/0
27	291	B	—	—	BRN	—	—	—	✓	—	—	0/0	0/0
28	292	B	—	—	BRN	—	—	✓	✓	—	—	0/0	0/0
29	293	B	—	—	BRN	—	—	—	✓	—	—	0/0	0/0
30	294	B	—	—	BRN	—	—	—	✓	—	—	0/0	0/0



P.O. Box 219
 14579 Government Road
 Larder Lake, Ontario, Canada, P0K 1L0
 Tel: (705) 643-2345 Fax: (705) 643-2191

Client: Golden Valley Project: Q2248

Date of Survey: Oct 27/16 Survey Personnel: Bruce and Claudia

Sample #	Depth (cm)	Soil Horizon	Drainage		Soil Color	Contam.	Soil Material					Other Notes	
			Az*	Slope			Clay	Silt	Sand	Gravel	Organic		
1	295	25	B	-	-	BRN	-	-	-	✓	-	-	MATURE SPRUCE / J. PINE
2	296	30	B	-	-	BRN	-	-	-	✓	-	-	7- 7- 7-
3	297	40	B	-	-	BRN	-	-	✓	✓	-	-	FLOOD PLAIN
4	298	30	B	-	-	GR/BRN	-	-	✓	✓	-	-	ALDER / J. PINE
5	299	10	B	-	-	GR/BRN	-	-	-	✓	-	-	CREEK BANK
6	300	30	B	-	-	GR/BRN	-	-	✓	✓	-	-	7- 7-
7	301	30	B	-	-	BRN	-	-	-	✓	-	-	MATURE SPRUCE / J. PINE
8	302	20	B	SW	2	BRN	-	-	-	✓	-	-	7- 7-
9	303	20	B	-	-	BRN	-	-	-	✓	-	-	7- 7-
10	304	20	B	S	1	BRN	-	-	-	✓	-	-	7- 7-
11	305	20	B	-	-	BRN	-	-	-	✓	-	-	7- 7-
12	306	20	B	-	-	BRN	-	-	-	✓	-	-	7- 7-
13	307	20	B	-	-	BRN	-	-	-	✓	-	-	7- 7-
14	308	20	B	-	-	BRN	-	-	-	✓	-	-	7- 7-
15	309	20	B	-	-	BRN	-	-	-	✓	-	-	7- 7-
16	310	30	B	-	-	BRN	-	-	-	✓	-	-	7- 7-
17	311	20	B	-	-	BRN	-	-	-	✓	-	-	7- 7-
18	312	30	B	-	-	BRN	-	-	-	✓	-	-	7- 7-
19	313	30	B	SE	1	BRN	-	-	-	✓	-	-	7- 7-
20	314	20	B	-	-	BRN	-	-	-	✓	-	-	7- 7-
21	315	20	B	-	-	BRN	-	-	-	✓	-	-	7- 7-
22	316	20	B	-	-	BRN	-	-	-	✓	-	-	7- 7-
23	317	20	B	-	-	BRN	-	-	-	✓	-	-	7- 7-
24	318	20	B	-	-	BRN	-	-	-	✓	-	-	7- 7-
25	319	20	B	-	-	BRN	-	-	-	✓	-	-	7- 7-
26	320	10	B	W	1	BRN	-	-	-	✓	-	-	7- 7-
27	321	20	B	-	-	BRN	-	-	-	✓	-	-	7- 7-
28	322	20	B	-	-	BRN	-	-	-	✓	-	-	7- 7-
29	323	15	B	-	-	BRN	-	-	✓	✓	-	-	7- 7-
30	324	30	B	-	-	BRN	-	-	-	✓	-	-	J. PINE PLANTATION

877.504.2345 | info@cxsltd.com | www.cxsltd.com

