

We are committed to providing [accessible customer service](#).
If you need accessible formats or communications supports, please [contact us](#).

Nous tenons à améliorer [l'accessibilité des services à la clientèle](#).
Si vous avez besoin de formats accessibles ou d'aide à la communication, veuillez [nous contacter](#).

WORK REPORT
On the
HWY 572 PROPERTY
GUIBORD TOWNSHIP
LARDER LAKE MINING DIVISION
for
STEVEN ANDERSON

Submitted by: Steve Anderson
2041663 ONTARIO LTD.
VISION EXPLORATION
1780 Coyote Ridge Road
Crystal Falls, Ontario
POH-1L0
Phone: 705-266-4703
Email: visionexploration@persona.ca
Website: www.duenorth.net/vision

November, 2015

TABLE OF CONTENTS

<u>Page #</u>	<u>Contents</u>
3	Introduction
5	Location and access
5	Personnel
5	Previous work
7	General Geology
7	Claims
8	Work Program
10	Survey Results
10	Recommendations and Conclusions
11	Certificate
 <u>Figures</u>	
1	Location map
2	Regional location map
3	Grid and Claim Sketch
4	IP Pseudo Section and Sample Location
 <u>Appendices</u>	
A	Assay Certificate

INTRODUCTION

The following report will deal with the results of a soil sampling program carried out on the Hwy 572 Property. This property consists of one block mining claim (8 units) located in Guibord Township, Larder Lake Mining Division, Ontario (Figure #3).

This program was designed obtain a profile of soil samples over a portion of grid line that hosts two previously outlined induced polarization anomalies. The horizon targeted was the till located directly above bedrock. Although overburden depths were expected to be fairly shallow due to the fact that there is outcropping just north of the claim boundary, the till horizon could not be reached in 2 attempts. In the first phase, samples were taken at a depth of 4 feet while a second phase samples at a depth of 8 feet. The samples taken at a depth of 8 feet were then assayed for gold. This work was carried out by Vision Exploration between May 5th, 2015 and October 16th, 2015.

This report will deal with the results of the soil sampling program carried out on the above-mentioned property.



**HWY 572 PROJECT
LOCATION MAP**
Figure #1

LOCATION AND ACCESS

The Hwy 572 Property consists of a single block-mining claims (8 units) located in the north-eastern portion of Guibord Township (Figure #3). The properties eastern boundary is marked by Hwy 572, which is also the boundary between Hislop and Guibord Townships. The property is situated approximately 75km east of the city of Timmins, or approximately 12km east of the town of Matheson. (Figure #2).

Access to the work area was gained by taking Hwy 101 east from the town of Matheson for approximately 12km to the junction of Hwy 572. The properties east boundary is located 3km south on Hwy 572.

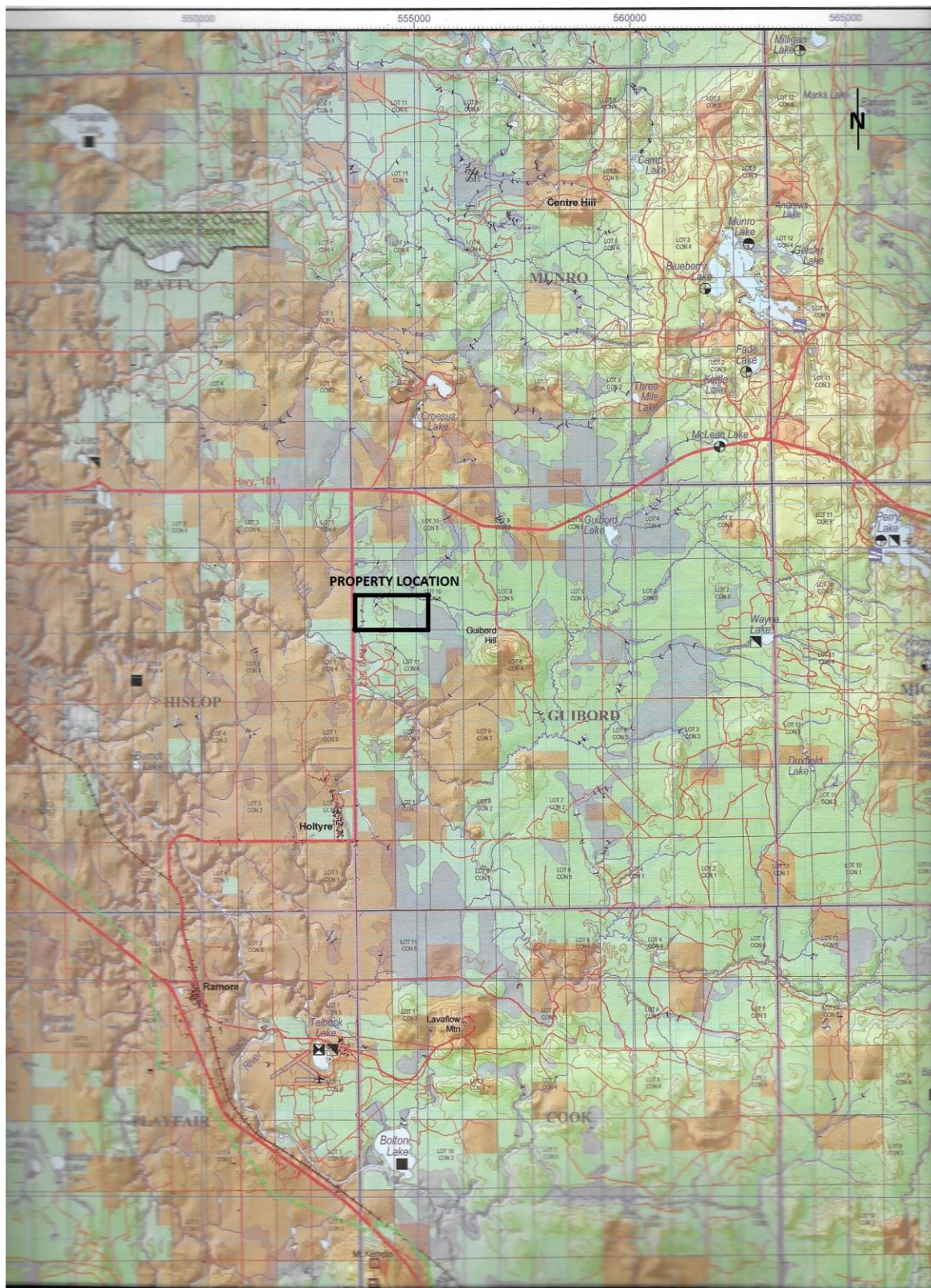
PERSONNEL

The following people were directly involved in carrying out the soil sampling program.

Geological technologist	Steve Anderson	Crystal Falls.
Helper	Glenda Smith	Crystal Falls

PREVIOUS WORK

The current work program was set up to further test two induced polarization anomalies outline previously. The sample locations and how they correlate with the IP can be found under Figure #4 of this report

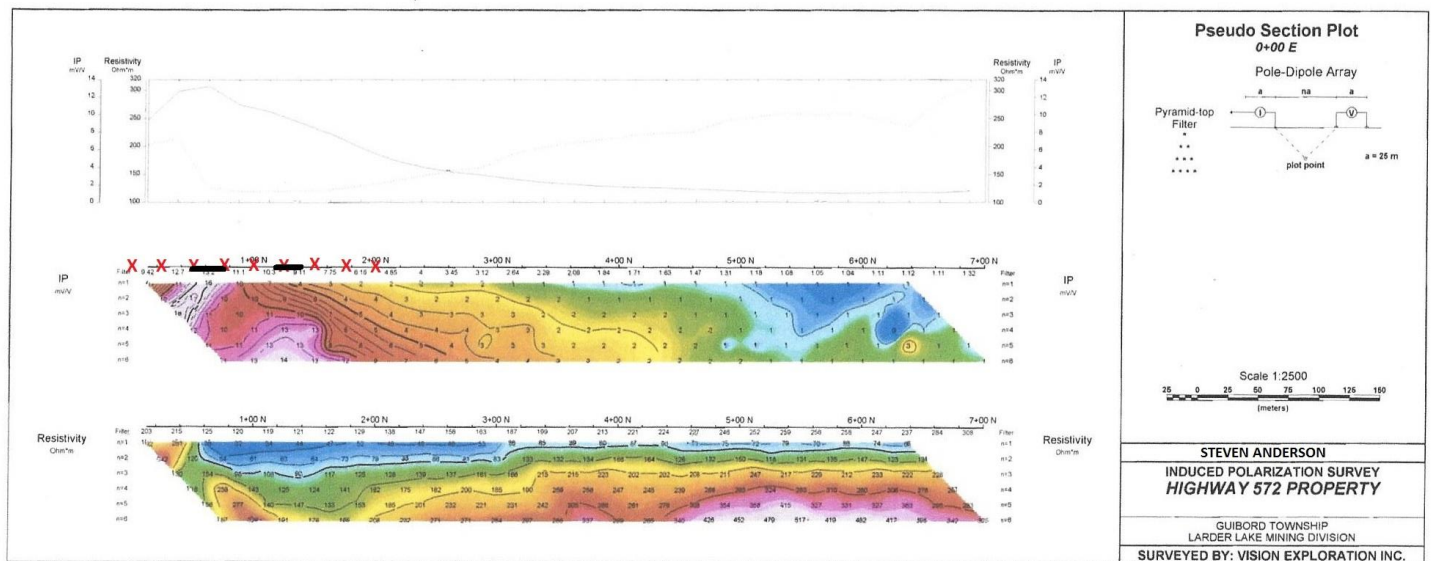


HWY 572 PROJECT REGIONAL LOCATION MAP

Figure #2

WORK PROGRAM

The current work program involved establishing sampling a 200m section of LOE, from BLON to 200N (Figure #4). Initially a spoon auger with a 4 foot handle was used. All samples were taken at a depth of 4 feet and were made up of a light grey leached clay. Since this was not the targeted horizon, a second attempt was made with the samples taken at an 8 foot depth. The second set of samples taken were still not the till but consisted of a dark brown clay. The second set of samples from 8 feet were sent for assays. The initial samples from the 4 foot depth were not sent for assay. The assay results can be found under appendix A of this report.



HWY 572 PROJECT
PSUEDO SECTION WITH SAMPLE LOCATIONS

X SAMPLE LOCATION
— IP ANOMALY

FIGURE #4

SURVEY RESULTS

All the samples from the 8 foot sample depth were sent for assay and all returned values of less than 5ppb Au.

RECOMMENDATIONS AND CONCLUSIONS

As mentioned under results, all samples returned values of less than 5ppb Au. Although the results were disappointing, the till horizon was not sampled and lies deeper than 8 feet.

At this point, it is known the till lies beyond the 8 foot depth and would require some type of mechanical auger to reach that horizon. It may be as cheap to test the two IP targets with diamond drilling. Additional testing with diamond drilling is warranted

CERTIFICATION

I, Steve Anderson of Timmins, Ontario hereby certify that:

1. I hold a three-year Geological Technologist Diploma from Sir Sandford College, Lindsay, and Ontario, obtained in May 1981.
2. I have been practising my profession since 1979 in Ontario, Quebec, Nova Scotia, New Brunswick, Newfoundland, NWT, Manitoba, Saskatchewan and Greenland.
3. I have been employed directly with Asamera Oil Inc. Urangellschaft Canada Ltd. Nanisivik Mines Ltd., R.S. Middleton Exploration Services Ltd., Rayan Exploration Ltd and I am currently owner of Vision Exploration.
4. I have based conclusions and recommendations contained in this report on knowledge of the area, my previous experience and on the results of the fieldwork conducted on the property during 2015

Dated this 15th day of November, 2015
At Timmins, Ontario.

APPENDIX "A"
ASSAY CERTIFICATE

Quality Analysis ...



Innovative Technologies

Date Submitted: 16-Oct-15
Invoice No.: A15-08795
Invoice Date: 06-Nov-15
Your Reference:

Vision Exploration
 PO Box 1080
 Timmins Ontario P4N 1G1
 Canada

ATTN: Vision Exploration Steve Anderson

CERTIFICATE OF ANALYSIS

17 Rock samples were submitted for analysis.

The following analytical package was requested:

Code 1A2-Timmins Au - Fire Assay AA

REPORT **A15-08795**

This report may be reproduced without our consent. If only selected portions of the report are reproduced, permission must be obtained. If no instructions were given at time of sample submittal regarding excess material, it will be discarded within 90 days of this report. Our liability is limited solely to the analytical cost of these analyses. Test results are representative only of material submitted for analysis.

Notes:

If value exceeds upper limit we recommend reassay by fire assay gravimetric-Code 1A3

CERTIFIED BY:

A handwritten signature in black ink, appearing to read "Emmanuel Esemé".

Emmanuel Esemé, Ph.D.
 Quality Control

ACTIVATION LABORATORIES LTD.
 1752 Riverside Drive, Timmins, Ontario, Canada, P4R 1N1
 TELEPHONE +705 264-0123 or +1.888.228.5227 FAX +1.905.648.9613
 E-MAIL Timmins@actlabs.com ACTLABS GROUP WEBSITE www.actlabs.com



Activation Laboratories Ltd.

Report: A15-08795

Results

Analyte Symbol	Au
Unit Symbol	ppb
Lower Limit	5
Method Code	FA-AA
XXXX	ZZZ
XXXX	ZZ
XXX	XX
XX	XX
XX	XX
XX	XX
XX	XX
XX	XX
XX	XX
2+00N	< 5
1+75N	< 5
1+50N	< 5
1+25N	< 5
1+00N	< 5
0+75N	< 5
0+50N	< 5
0+25N	< 5
0+00N	< 5