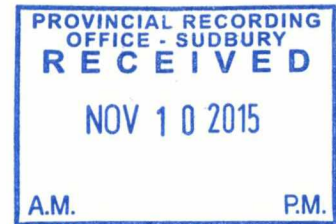


We are committed to providing [accessible customer service](#).  
If you need accessible formats or communications supports, please [contact us](#).

Nous tenons à améliorer [l'accessibilité des services à la clientèle](#).  
Si vous avez besoin de formats accessibles ou d'aide à la communication, veuillez [nous contacter](#).

2-56384



**WORK REPORT**  
**On the**  
**WAWA GOLD PROJECTS**  
**NAVEAU AND MCMURRAY TOWNSHIPS**  
**SAULT STE MARIE MINING DIVISION**

Submitted by: Steve Anderson  
2041663 ONTARIO LTD.  
*VISION EXPLORATION*  
1780 Coyote Ridge Road  
Crystal Falls, Ontario  
P0H-1L0  
Phone: 705-266-4703  
Email: [visionexploration@persona.ca](mailto:visionexploration@persona.ca)  
Website: [www.duenorth.net/vision](http://www.duenorth.net/vision)

November, 2015

## TABLE OF CONTENTS

| <u>Page #</u> | <u>Contents</u>                 |
|---------------|---------------------------------|
| 1             | Introduction                    |
| 3             | Location and access             |
| 3             | Personnel                       |
| 4             | Previous work                   |
| 5             | Claims                          |
| 6             | Work Program                    |
| 12            | Results                         |
| 12            | Recommendations and Conclusions |
| 13            | Certificate                     |

### Figures

|   |                             |
|---|-----------------------------|
| 1 | Location map                |
| 2 | Claim Sketch                |
| 3 | McMurray Prospecting Sketch |
| 4 | Naveau Prospecting Sketch   |

### Pictures

|   |                                  |
|---|----------------------------------|
| 1 | Incline Shaft #1 Naveau Township |
| 2 | Incline Shaft #2 Naveau Township |
| 3 | Incline Shaft #2 Naveau Township |
| 4 | Dump Area Naveau Township        |

|            |                   |
|------------|-------------------|
| Appendix A | Assay Certificate |
|------------|-------------------|

## INTRODUCTION

The following report will deal with the results of a preliminary prospecting program carried out on the Wawa Gold Property. This project consists of two blocks of claims. The first is a single, 4 unit mining claim (4261229) located in McMurray Township, Sault Ste Marie Mining Division, Ontario (Figure #3). The second property is made up of 2 contiguous single unit mining claims (4217947 and 4271228) located in Naveau Township, Sault Ste Marie mining division. All work was supervised by Steven Anderson.

The two properties were visited on two separate occasions. In both cases, one day was spent travelling and one day prospecting by a geologist and prospector, in an attempt to relocate a number of old shaft reported to occur within the claim groups. A total of 8 grab samples were taken from the dump area around the shafts and trenches located, 4 from each property. The purpose of this program was to take samples from the shaft or dump area in an attempt to confirm the previously reported gold values. The work on the McMurray claim was carried out on August 24<sup>th</sup> and 25<sup>th</sup> while the Naveau claims were worked on September 1<sup>st</sup> and 2<sup>nd</sup> 2015.

This report will deal with the results of the preliminary prospecting program carried out on the above-mentioned property.





## WAWA GOLD PROJECTS

Location Map

Figure #1

### **LOCATION AND ACCESS**

The Wawa Gold Properties are made up of two separate claim groups. The first is located in the southeast portion of McMurray Township. It is situated approximately 7 km east-southeast of the town of Wawa. Access to the claim was gained by taking Hwy 101 east from the town of Wawa for 10 km to the Fire Sand Road. This road heads south from Hwy 101 and provides access to the southeast corner of claim 4261229 at approximately the 9 km point. It should be noted that a wash out in the road about 2km before the claim made in necessary to use an ATV to access the property.

The second project area is located in the northwest portion of Naveau Township. It is situated approximately 9 km southeast of the town of Wawa. Access to the claim group was gained by taking Hwy 17 south from the town of Wawa for approximately 6 km, to High Falls Road. This road heads east from the Hwy and crosses the southwest corner of the block at approximately the 7.5 km point.

### **PERSONELL**

The following people were directly involved in carrying out the preliminary prospecting on the Wawa Gold Projects.

Prospector  
Geologist

Steve Anderson  
Case Lewis

Timmins  
Vancouver



## PREVIOUS WORK

The first phase of exploration to be conducted by the claim holder.

The McMurray Township claim is described by the MDI file as being within the Reed Lake Stock which is a large poorly outlined mafic intrusion centered on Reed Lake. The Reed Lake Stock and the Jubilee Stock may be connected or related. These intrusive bodies may occupy a conjugate fracture pattern. The gabbro and granodiorite are massive, medium to locally coarse-grained and weathered green to dark green. Locally shearing is common. The shaft and adit were driven close to the contact between gabbro and granodiorite. A diabase dike traverses the contact between the two rock types at this site. A second incline shaft was reportedly sunk at the intersection of two quartz veins. No assays have been published for this occurrence. The calculated grade for the mine production is 2.3 oz/ton Au. This work was carried out between 1900 and 1908, with very little work done since.

The Naveau Township claims have been worked since the turn of the century with production taking place on two occasions, in 1934 and 1939-40. Production records cannot be found for 1934 and are very sketchy for 1939-40, having only reported that 610oz of gold and 36oz silver were produced during that time.

Again, production records are for the most part nonexistent, but it appears that at least 3 shafts were sunk over the years. The main shaft reached a depth of 155 feet and constituted 748 feet of drifts and cross-cuts and 138 feet of raises on the first level, and 2969 feet of drifts and cross-cuts and 150 feet of raises on the second. Numerous surface trenches were also reported on the property.

The gold bearing quartz vein reportedly occurs as fissure fillings in the Centennial stock. The granodiorite locally encloses pendants of chloritic mafic metavolcanics, one of which occurs on the hanging wall of the main vein. Four veins were identified on surface, all striking approximately northwest and dipping 40 to 45 degrees northeast. Two veins were opened up on the first level of the main shaft and a third vein on the second level. The veins consist of glassy quartz with small amounts of carbonate and tourmaline. Mineralization is Pyrite, pyrrhotite and chalcopyrite with visible gold. The veins vary in width from 2 feet to 7 feet. Underground samples reported from the vein in the #3 shaft were as high as 2.35 oz/ton Au.

A 1935 report by consulting engineer A.C. Harris also makes mention of the presence of Platinum group metals. These precious metals include platinum, palladium, Iridium, osmium, etc... Owing to the difficult determination of these metals at the time, no exact quantities were mentioned. He does however go on to say that indications point to their being present in economic quantities and it is probable that the combined value of the group metals would at least be equal to the gold content.

Geological reports also mention the presence of a lamprophyre dike on the property. Wawa has recently been recognized for the diamonds which occur within the lamprophyre dikes of the region. There is no indication that the diamond potential of the lamprophyre dike occurring on the property has ever been explored.

Limited work has been carried out since the production dates. This property has not been evaluated using modern geophysical or geological methods and may have the potential to be economical using modern mining methods.

## CLAIMS

The areas worked during this program focused on the two claim groups listed below. The claims are all recorded 100% in the name of Steven Anderson.

### McMurray Township Claim

| <u>Claim #</u> | <u>Units</u> |
|----------------|--------------|
| 4261229        | 4 units      |

### Naveau Township Claims

| <u>Claim #</u> | <u>Units</u> |
|----------------|--------------|
| 4217947        | 1 unit       |
| 4271228        | 1 unit       |

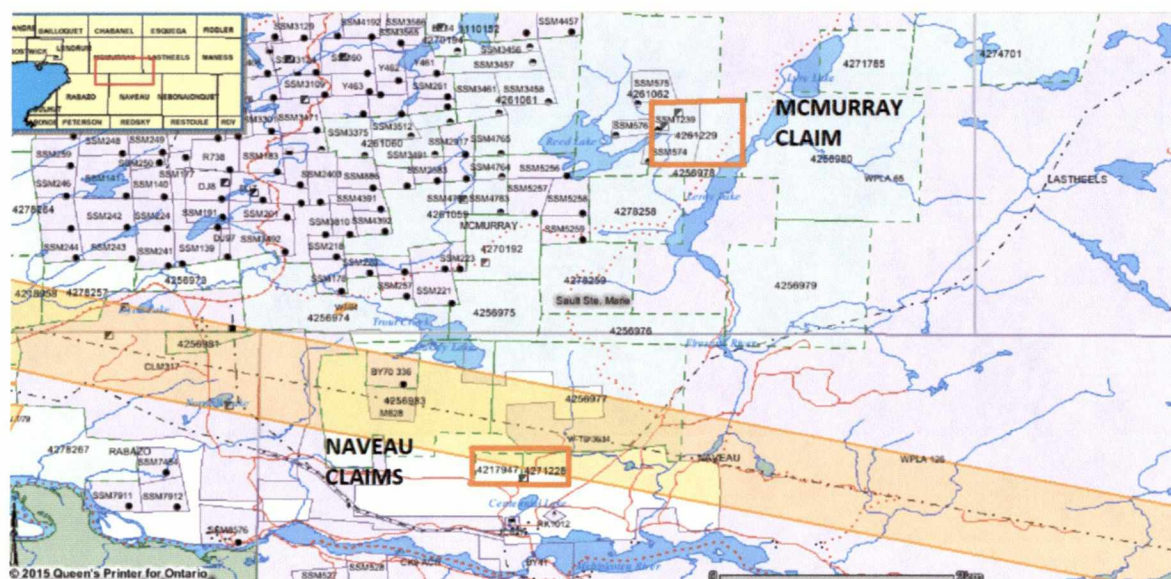


Figure #2



### **WORK PROGRAM**

This work program involved spending 1 days travelling from Crystal Falls Ontario and prospecting the subject claim for 1 day. This was done on two separate occasions, one for each claim group. A total of 4 grab samples taken from the dump area around the shafts in Naveau Township. Another 4 samples were taken from an old trench on the McMurray claim.

### **PROSPECTING SKETCH**

Figure #3

old Trench  
Located at 16T  
671966ME  
5314095MN

● Sample } All from  
Location } old Trench  
2220  
2221  
2222  
2223

MV - Mafic Volcanic

--- Claim line

■ Claim Post

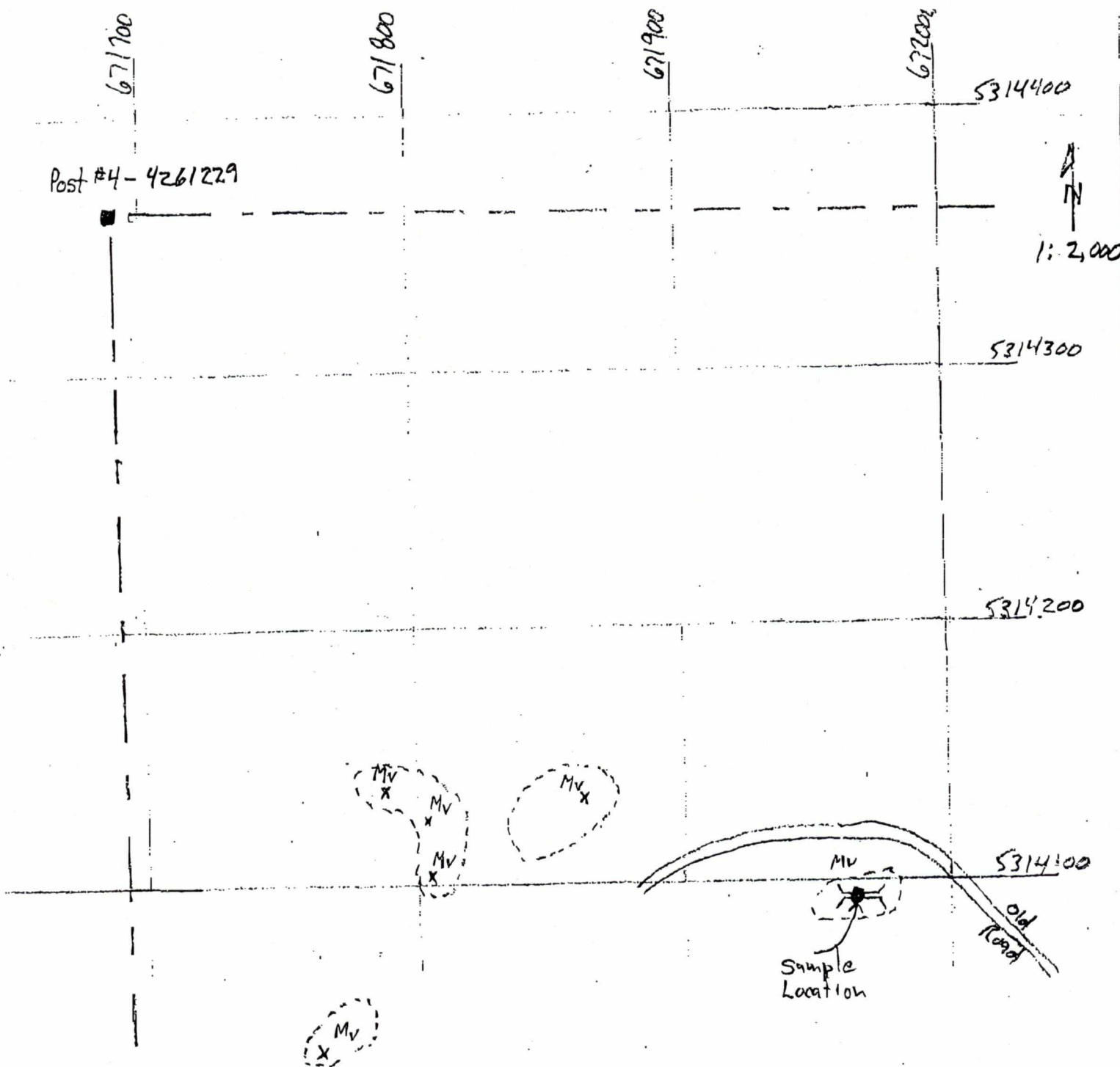
--- Outcrop limit

x Outcrop

UM - Nad 83

Wawa Gold Project  
Claim # 4261229  
Prospecting and  
Sample Location  
Sketch

Figure #3



■ shaft #1  
16T 670619  
5309590

■ shaft #2  
16T 670634  
5309575  
Nad 03

Fv- felsic Volcanic

○ Rock Dump.

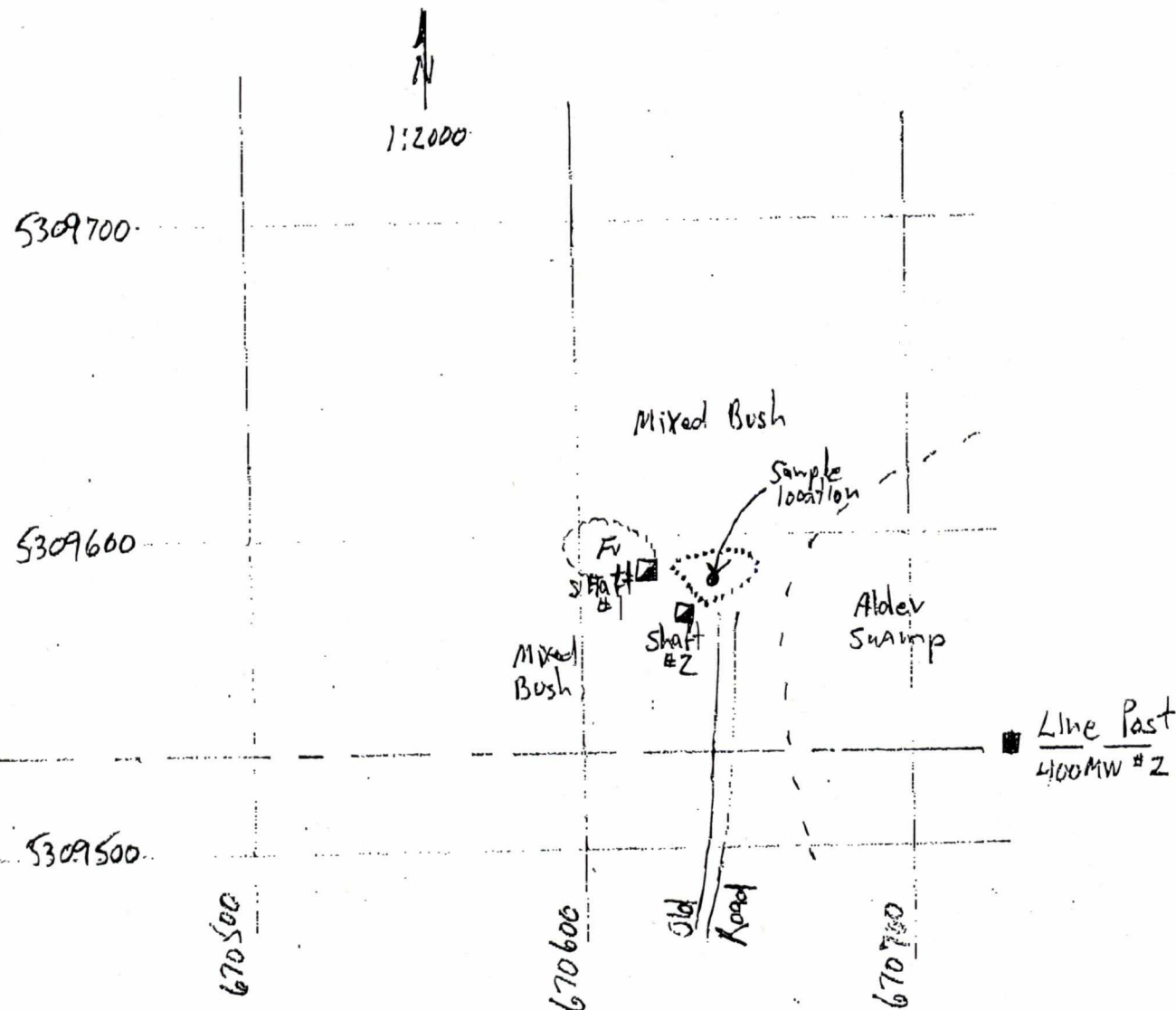
○ Outcrop limit

- sample location  
2216  
2217  
2218  
2219

All samples taken from  
Rock Dump at  
16T 670640  
5309535

--- Claim Line  
■ Claim Post

Wawa Gold Project  
Claim # 4217947  
Prospecting and Sample  
Location Sketch  
Figure #4







INCLINE SHAFT #1 - NAVEAU TOWNSHIP PROJECT  
Picture #1





INCLINE SHAFT #2 NAVEAU TOWNSHIP  
Picture #2

---





INCLINE SHAFT #2 NAVEAU TOWNSHIP  
Picture #3





DUMP AREA NAVEAU TOWNSHIP  
Picture #4

## **SURVEY RESULTS**

The following is a description of the 8 samples taken. Assays can be found under appendix A of this report.

### **Naveau Township**

- 2216 Quartz with Pyrite blebs and carbonate
- 2217 Sugary Quartz with rust staining
- 2218 Quartz and Smokey quartz with tourmaline
- 2219 Quartz Mafic Volcanic

### **McMurray Township**

- 2220 Quartz with minor pyrite
- 2221 Mafic Volcanic with quartz
- 2222 Mafic Volcanic with glassy quartz
- 2223 Mafic Volcanic with quartz

## **RECOMMENDATIONS AND CONCLUSIONS**

The prospecting program carried out on the two Wawa Gold Projects did not show encouraging results. Two of the samples from Naveau Township showed slightly elevated values in gold (678 and 771 ppb). The McMurray Township samples showed no significant values.

Although only weakly anomalous values were obtained from the Naveau Township dump area, there was very little ore material to sample. An attempt should be made to sample the quartz vein from underground. This should only be done if conditions allow.

The shaft and incline shaft reported to be within the McMurray claim was not located by this work program. More time should be spent looking for these old workings and an additional sampling program carried out.

If additional sampling program shows significant gold values, a geophysical program should be set up. This should take the form of line cutting followed by Induced Polarization and Magnetometer surveys covering both claim groups.



CERTIFICATION

I, Steve Anderson of Timmins, Ontario hereby certify that:

1. I hold a three-year Geological Technologist Diploma from Sir Sandford College, Lindsay, and Ontario, obtained in May 1981.
2. I have been practising my profession since 1979 in Ontario, Quebec, Nova Scotia, New Brunswick, Newfoundland, NWT, Manitoba, Saskatchewan and Greenland.
3. I have been employed directly with Asamera Oil Inc. Urangellschaft Canada Ltd. Nanisivik Mines Ltd., R.S. Middleton Exploration Services Ltd., Rayan Exploration Ltd and I am currently co-owner of Vision Exploration.
4. I have based conclusions and recommendations contained in this report on knowledge of the area, my previous experience and on the results of the fieldwork conducted on the property during August and September, 2015
5. I am currently the claim holder for the subject property.

Dated this 9<sup>th</sup> day of November, 2015  
At Timmins, Ontario.





APPENDIX A  
ASSAY CERTIFICATE

Quality Analysis ...



Innovative Technologies

**Date Submitted:** 16-Oct-15

**Invoice No.:** A15-08795

**Invoice Date:** 06-Nov-15

**Your Reference:**

Vision Exploration  
PO Box 1080  
Timmins Ontario P4N 1G1  
Canada

ATTN: Vision Exploration Steve Anderson

## CERTIFICATE OF ANALYSIS

17 Rock samples were submitted for analysis.

The following analytical package was requested:

Code 1A2-Timmins Au - Fire Assay AA

REPORT **A15-08795**

This report may be reproduced without our consent. If only selected portions of the report are reproduced, permission must be obtained. If no instructions were given at time of sample submittal regarding excess material, it will be discarded within 90 days of this report. Our liability is limited solely to the analytical cost of these analyses. Test results are representative only of material submitted for analysis.

Notes:

If value exceeds upper limit we recommend reassay by fire assay gravimetric-Code 1A3

CERTIFIED BY:

A handwritten signature in black ink, appearing to read "Emmanuel Esemé".

Emmanuel Esemé, Ph.D.  
Quality Control

**ACTIVATION LABORATORIES LTD.**

1752 Riverside Drive, Timmins, Ontario, Canada, P4R 1N1  
TELEPHONE +705 264-0123 or +1.888.228.5227 FAX +1.905.648.9613  
E-MAIL Timmins@actlabs.com ACTLABS GROUP WEBSITE www.actlabs.com



| Analyte Symbol | Au    |
|----------------|-------|
| Unit Symbol    | ppb   |
| Lower Limit    | 5     |
| Method Code    | FA-AA |
| 2216           | 678   |
| 2217           | 771   |
| 2218           | 23    |
| 2219           | < 5   |
| 2220           | < 5   |
| 2221           | < 5   |
| 2222           | 56    |
| 2223           | < 5   |
| 2224           |       |
| 2225           |       |
| 2226           |       |
| 2227           |       |
| 2228           |       |
| 2229           |       |
| 2230           |       |
| 2231           |       |
| 2232           |       |
| 2233           |       |
| 2234           |       |
| 2235           |       |
| 2236           |       |
| 2237           |       |
| 2238           |       |
| 2239           |       |
| 2240           |       |
| 2241           |       |
| 2242           |       |
| 2243           |       |
| 2244           |       |
| 2245           |       |
| 2246           |       |
| 2247           |       |
| 2248           |       |
| 2249           |       |
| 2250           |       |
| 2251           |       |
| 2252           |       |
| 2253           |       |
| 2254           |       |
| 2255           |       |
| 2256           |       |
| 2257           |       |
| 2258           |       |
| 2259           |       |
| 2260           |       |
| 2261           |       |
| 2262           |       |
| 2263           |       |
| 2264           |       |
| 2265           |       |
| 2266           |       |
| 2267           |       |
| 2268           |       |
| 2269           |       |
| 2270           |       |
| 2271           |       |
| 2272           |       |
| 2273           |       |
| 2274           |       |
| 2275           |       |
| 2276           |       |
| 2277           |       |
| 2278           |       |
| 2279           |       |
| 2280           |       |
| 2281           |       |
| 2282           |       |
| 2283           |       |
| 2284           |       |
| 2285           |       |
| 2286           |       |
| 2287           |       |
| 2288           |       |
| 2289           |       |
| 2290           |       |
| 2291           |       |
| 2292           |       |
| 2293           |       |
| 2294           |       |
| 2295           |       |
| 2296           |       |
| 2297           |       |
| 2298           |       |
| 2299           |       |