

We are committed to providing [accessible customer service](#).
If you need accessible formats or communications supports, please [contact us](#).

Nous tenons à améliorer [l'accessibilité des services à la clientèle](#).
Si vous avez besoin de formats accessibles ou d'aide à la communication, veuillez [nous contacter](#).



CANADIAN EXPLORATION SERVICES LTD

PO Box 219, 14579 Government Road, Larder Lake, Ontario, P0K 1L0, Canada
Phone (705) 643-2345 Fax (705) 643-2191 www.cxsltd.com



ASHLEY
GOLD MINES LIMITED

**VLF EM
Survey
Over the
ANVIL PROPERTY
Whitson and Van Nostrand
Townships, Ontario**

C Jason Ploeger, B.Sc, P.Geo
September 9, 2015

TABLE OF CONTENTS

1.	SURVEY DETAILS	3
1.1	PROJECT NAME	3
1.2	CLIENT.....	3
1.3	LOCATION	3
1.4	ACCESS	4
1.5	SURVEY GRID.....	4
2.	SURVEY WORK UNDERTAKEN	5
2.1	SURVEY LOG	5
2.2	PERSONNEL	5
2.3	SURVEY SPECIFICATIONS	5
3.	OVERVIEW OF SURVEY RESULTS	6
3.1	SUMMARY	6

LIST OF APPENDICES

APPENDIX A: STATEMENT OF QUALIFICATIONS
APPENDIX B: THEORETICAL BASIS AND SURVEY PROCEDURES
APPENDIX C: INSTRUMENT SPECIFICATIONS
APPENDIX D: LIST OF MAPS (IN MAP POCKET)

LIST OF TABLES AND FIGURES

Figure 1: Location of the Anvil Property	3
Figure 2: VLF EM Reconnaissance Route on Claim Map.....	4
Figure 3: VLF EM Plan Map on Google	6
Table 1: Survey Log.....	5

1. SURVEY DETAILS

1.1 PROJECT NAME

This project is known as the **Anvil Property**.

1.2 CLIENT

Ashley Gold Mines Limited
14579 Government Rd.
Larder Lake, Ontario
P0K1L0

1.3 LOCATION

The Anvil Property is located approximately 32km south of Elk Lake, Ontario. The survey area is located on mining claim 4220227, located in Whitson and Van Nostrand Townships, within the Larder Lake Mining Division.

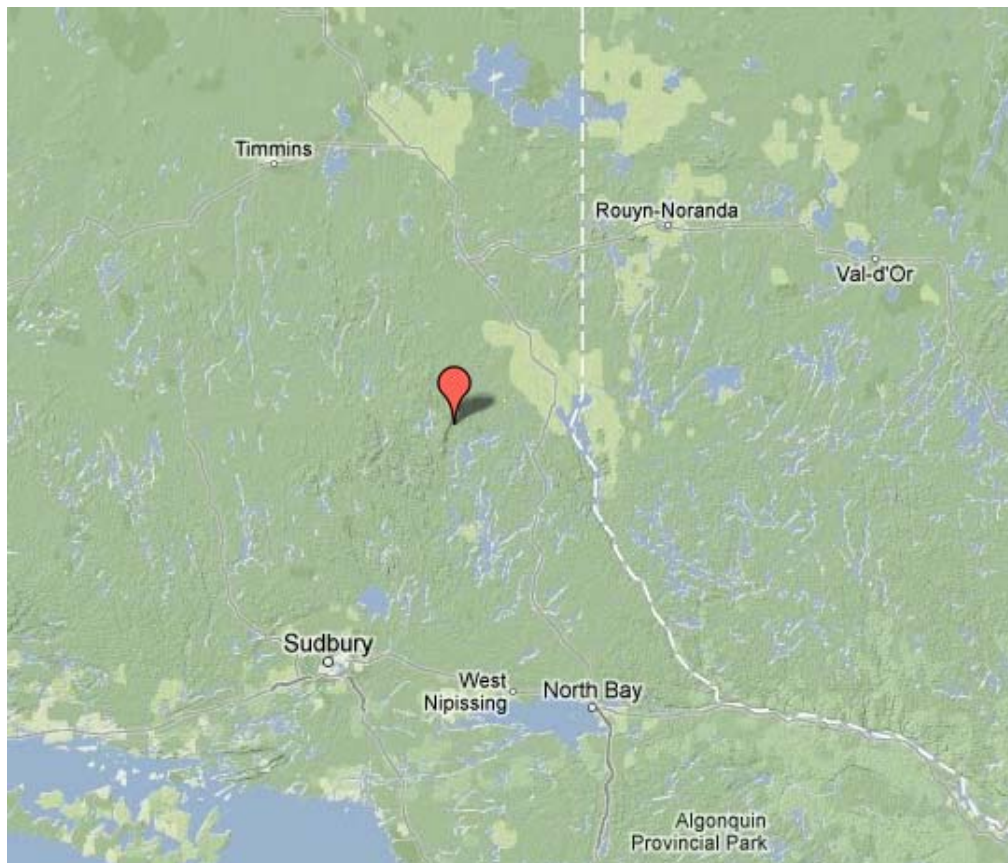


Figure 1: Location of the Anvil Property

1.4 ACCESS

Access to the property was attained with a 4x4 truck via the Town of Elk Lake, Ontario. From Elk Lake, the Cooke Lake Road extends southward. The Cooke Lake Road along with the Anvil Lake road was travelled for approximately 41 kilometers to access the survey area.

1.5 SURVEY GRID

The traversed lines were established using a GPS in conjunction with the execution of the survey. The survey area was designed to be a reconnaissance survey over the claim with some readings being taken at the historic work areas.

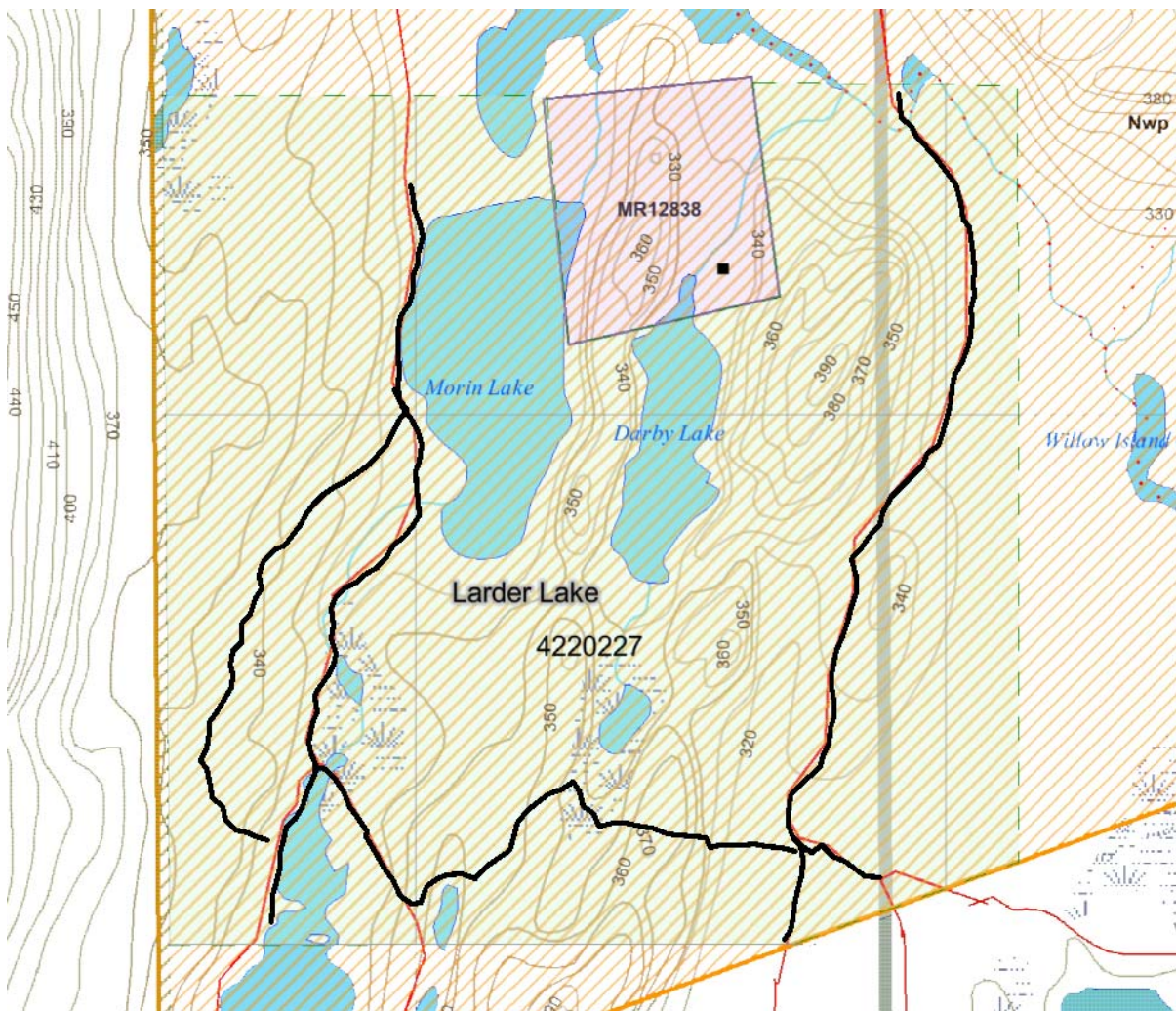


Figure 2: VLF EM Reconnaissance Route on Claim Map

2. SURVEY WORK UNDERTAKEN

2.1 SURVEY LOG

Date	Description	Line	Min Extent	Max Extent	Total Survey (km)
September 3, 2015	Locate survey area and conduct survey.	NA	NA	NA	6.2

Table 1: Survey Log

2.2 PERSONNEL

Claudia Moraga of Britt, Ontario operated the VLF EM system along with performing the navigation.

2.3 SURVEY SPECIFICATIONS

The survey was conducted with a GSM-19 v7 VLF EM. Sensor orientation was maintained with a compass.

A total of 6.2 line kilometers of VLF EM was read over the Anvil Property on September 3, 2015. This consisted of 232 VLF EM samples taken at a paced 25 meter interval. Simultaneous GPS UTM readings were taken to georeference the reading.

3. OVERVIEW OF SURVEY RESULTS

3.1 SUMMARY



Figure 3: VLF EM Plan Map on Google

The reconnaissance VLF signature for the Anvil Property only indicates one potential area. This falls approximately 450 meters east of the historic mine and appears unrelated. This being said the signature occurs at the intersection of both east and

west traverses and can be seen in both directions. This location falls near UTM coordinate, NAD 83 Zone 17 554726E and 5251171N.

I would recommend following this up with an additional no grid VLF EM survey over this area as to better determine the nature of the crossover.

APPENDIX A

STATEMENT OF QUALIFICATIONS

I, C. Jason Ploeger, hereby declare that:

1. I am a professional geophysicist with residence in Larder Lake, Ontario and am presently employed as a Geophysicist and Geophysical Manager of Canadian Exploration Services Ltd. of Larder Lake, Ontario.
2. I am a Practising Member of the Association of Professional Geoscientists, with membership number 2172.
3. I graduated with a Bachelor of Science degree in geophysics from the University of Western Ontario, in London Ontario, in 1999.
4. I have practiced my profession continuously since graduation in Africa, Bulgaria, Canada, Mexico and Mongolia.
5. I am a member of the Ontario Prospectors Association, a Director of the Northern Prospectors Association and a member of the Society of Exploration Geophysicists.
6. I do not have nor expect an interest in the properties and securities of **Ashley Gold Mines Limited**.
7. I am responsible for the final processing and validation of the survey results and the compilation of the presentation of this report. The statements made in this report represent my professional opinion based on my consideration of the information available to me at the time of writing this report.



C. Jason Ploeger, P.Geo., B.Sc.
Geophysical Manager
Canadian Exploration Services Ltd.

Larder Lake, ON
September 9, 2015

APPENDIX B

THEORETICAL BASIS AND SURVEY PROCEDURES

VLF EM SURVEY

The frequency domain VLF electromagnetic survey is designed to measure both the vertical and horizontal in-phase (IP) and Quadrature (OP) components of the anomalous field from electrically conductive zones. The sources for VLF EM surveys are several powerful radio transmitters located around the world which generate EM radiation in the low frequency band of 15-25kHz. The signals created by these long-range communications and navigational systems may be used for surveying up to several thousand kilometres away from the transmitter. The quality of the incoming VLF signal can be monitored using the field strength. A field strength above 5pT will produce excellent quality results. Anything lower indicates a weak signal strength, and possibly lower data quality. A very low signal strength (<1pT) may indicate the radio station is down.

The EM field is planar and horizontal at large distances from the EM source. The two components, electric (E) and magnetic (H), created by the source field are orthogonal to each other. E lies in a vertical plane while H lies at right angles to the direction of propagation in a horizontal plane. In order to ensure good coupling, the strike of possible conductors should lie in the direction of the transmitter to allow the H vector to pass through the anomaly, in turn, creating a secondary EM field.

The VLF EM receiver has two orthogonal aeriels which are tuned to the frequency of the transmitting station. The direction of the source station is located by rotating the sensor around a vertical axis until a null position is found. The VLF EM survey procedure consists of taking measurements at stations along each line on the grid. The receiver is rotated about a horizontal axis, right angles to the traverse and the tilt recorded at the null position.

APPENDIX C

GSM 19



Specifications

Overhauser Performance

Resolution: 0.01 nT
Relative Sensitivity: 0.02 nT
Absolute Accuracy: 0.2nT
Range: 20,000 to 120,000 nT
Gradient Tolerance: Over 10,000nT/m
Operating Temperature: -40°C to +60°C

Operation Modes

Manual: Coordinates, time, date and reading stored automatically at min. 3 second interval.
Base Station: Time, date and reading stored at 3 to 60 second intervals.
Walking Mag: Time, date and reading stored at coordinates of fiducial.
Remote Control: Optional remote control using RS-232 interface.
Input/Output: RS-232 or analog (optional) output using 6-pin weatherproof connector.

Operating Parameters

Power Consumption: Only 2Ws per reading. Operates continuously for 45 hours on standby.
Power Source: 12V 2.6Ah sealed lead acid battery standard, other batteries available
Operating Temperature: -50°C to +60°C

Storage Capacity

Manual Operation: 29,000 readings standard, with up to 116,000 optional.
With 3 VLF stations: 12,000 standard and up to 48,000 optional.
Base Station: 105,000 readings standard, with up to 419,000 optional (88 hours or 14 days uninterrupted operation with 3 sec. intervals)
Gradiometer: 25,000 readings standard, with up to 100,000 optional. With 3 VLF stations: 12,000, with up to 45,000 optional.

Omnidirectional VLF

Performance Parameters: Resolution 0.5% and range to $\pm 200\%$ of total field.
Frequency 15 to 30 kHz.

Measured Parameters: Vertical in-phase & out-of-phase, 2 horizontal components, total field coordinates, date, and time.

Features: Up to 3 stations measured automatically, in-field data review, displays station field strength continuously, and tilt correction for up to $\pm 10^\circ$ tilts.

Dimensions and Weights: 93 x 143 x 150mm and weighs only 1.0kg.

Dimensions and Weights

Dimensions:

Console: 223 x 69 x 240mm

Sensor: 170 x 71mm diameter cylinder

Weight:

Console: 2.1kg

Sensor and Staff Assembly: 2.0kg

Standard Components

GSM-19 magnetometer console, harness, battery charger, shipping case, sensor with cable, staff, instruction manual, data transfer cable and software.

Taking Advantage of a “Quirk” of Physics

Overhauser effect magnetometers are essentially proton precession devices except that they produce an order-of magnitude greater sensitivity. These "supercharged" quantum magnetometers also deliver high absolute accuracy, rapid cycling (up to 5 readings / second), and exceptionally low power consumption.

The Overhauser effect occurs when a special liquid (with unpaired electrons) is combined with hydrogen atoms and then exposed to secondary polarization from a radio frequency (RF) magnetic field. The unpaired electrons transfer their stronger polarization to hydrogen atoms, thereby generating a strong precession signal-- that is ideal for very high-sensitivity total field measurement. In comparison with proton precession methods, RF signal generation also keeps power consumption to an absolute minimum and reduces noise (i.e. generating RF frequencies are well out of the bandwidth of the precession signal).

In addition, polarization and signal measurement can occur simultaneously - which enables faster, sequential measurements. This, in turn, facilitates advanced statistical averaging over the sampling period and/or increased cycling rates (i.e. sampling speeds).

-
- The unique Overhauser unit blends physics, data quality, operational efficiency, system design and options into an instrumentation package that ... exceeds proton precession and matches costlier optically pumped cesium capabilities

APPENDIX C

GARMIN GPS MAP 62S



Physical & Performance:	
Unit dimensions, WxHxD:	2.4" x 6.3" x 1.4" (6.1 x 16.0 x 3.6 cm)
Display size, WxH:	1.43" x 2.15" (3.6 x 5.5 cm); 2.6" diag (6.6 cm)
Display resolution, WxH:	160 x 240 pixels
Display type:	transflective, 65-K color TFT
Weight:	9.2 oz (260.1 g) with batteries
Battery:	2 AA batteries (not included); NiMH or Lithium recommended
Battery life:	20 hours
Waterproof:	yes (IPX7)
Floats:	no
High-sensitivity receiver:	yes

Interface:	high-speed USB and NMEA 0183 compatible
Maps & Memory:	
Basemap:	yes
Preloaded maps:	no
Ability to add maps:	yes
Built-in memory:	1.7 GB
Accepts data cards:	microSD™ card (not included)
Waypoints/favorites/locations:	2000
Routes:	200
Track log:	10,000 points, 200 saved tracks
Features & Benefits:	
Automatic routing (turn by turn routing on roads):	yes (with optional mapping for detailed roads)
Electronic compass:	yes (tilt-compensated, 3-axis)
Touchscreen:	no
Barometric altimeter:	yes
Camera:	no
<u>Geocaching-friendly:</u>	yes (paperless)
<u>Custom maps compatible:</u>	yes
Photo navigation (navigate to geotagged photos):	yes
Outdoor GPS games:	no
Hunt/fish calendar:	yes
Sun and moon information:	yes

Tide tables:	yes
Area calculation:	yes
Custom POIs (ability to add additional points of interest):	yes
Unit-to-unit transfer (shares data wirelessly with similar units):	yes
Picture viewer:	yes
Garmin Connect™ compatible (online community where you analyze, categorize and share data):	yes

- *Specifications obtained from www.garmin.com*

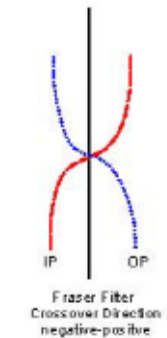
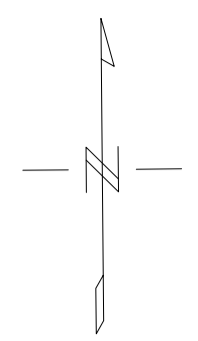
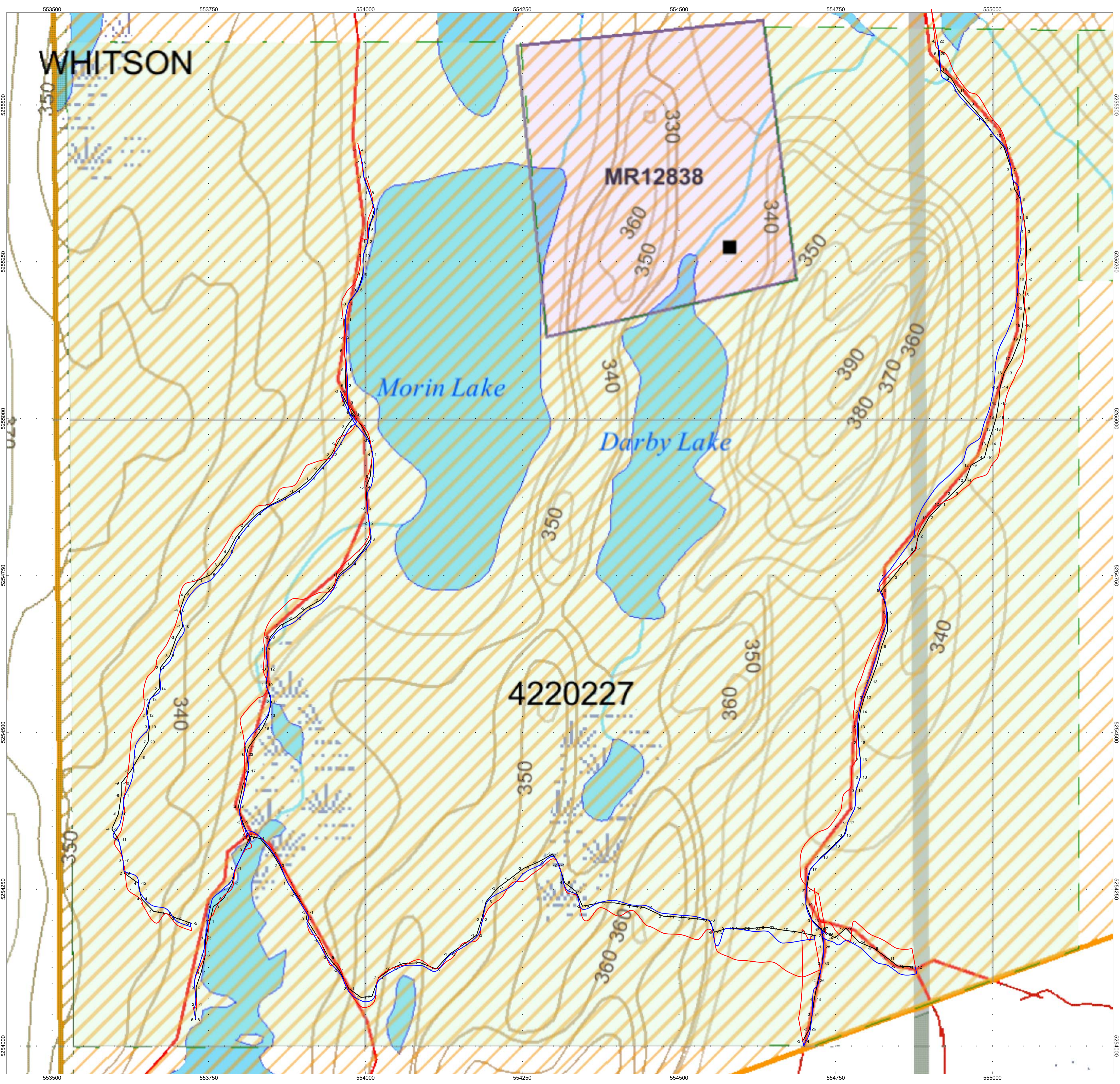
APPENDIX D

LIST OF MAPS (IN MAP POCKET)

Posted profiled VLF EM plan map (1:2500)

- 1) ASHLEY-ANVIL-VLF-NAA

TOTAL MAPS=1



ANVIL PROPERTY
Van Nostrand Township, Ontario

VLF IN PHASE/OUT PHASE PROFILE - PLAN MAP
24.0kHz NAA - CUTLER USA

In Phase: Posted Right/Bottom (Red)
Out Phase: Posted Left/Top (Blue)

Vertical Profile Scales: 1.0%/mm
Contour Interval:

Station Separation: 25 meters
Posting Level: 0

GSM-19 VLF v7

Receiver Operated By: Claudia Moraga
Processed by: Jason Ploeger
Map Drawn By: C Jason Ploeger, B.Sc.
September 2015



Drawing: ASHLEY-ANVIL-VLF-NAA

