

Date / Time of Issue: Mon Jan 13 08:29:35 EST 2014

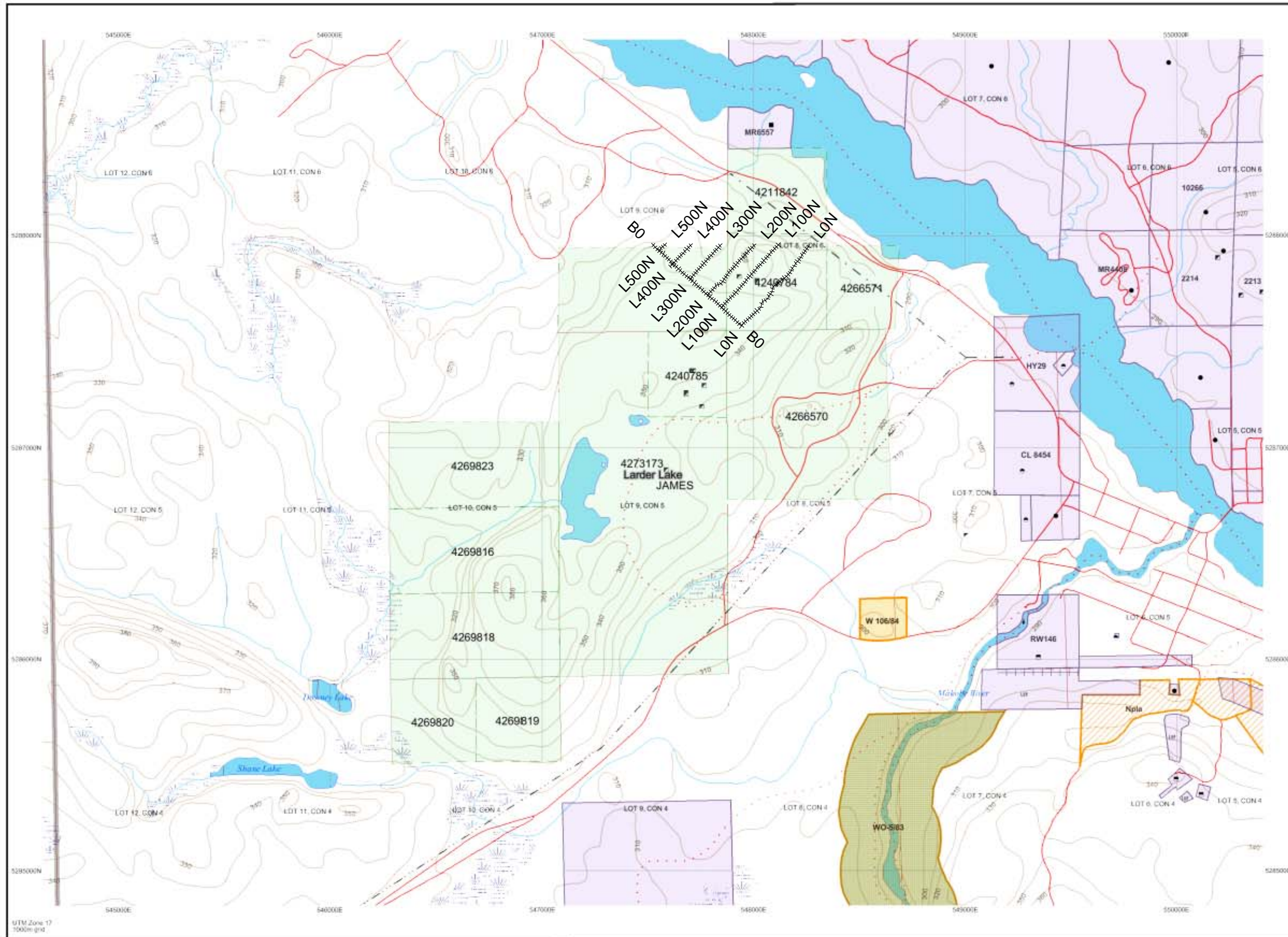
TOWNSHIP / AREA  
JAMES

PLAN  
M-0225

ADMINISTRATIVE DISTRICTS / DIVISIONS

Mining Division  
Land Titles/Registry Division  
Ministry of Natural Resources District

Larder Lake  
TIMISKAMING  
KIRKLAND LAKE



TOPOGRAPHIC

- Administrative Boundaries
- Township
- Concession Lot
- Provincial Park
- Indian Reserve
- Crt. Pt & Pile
- Contour
- Mine Shaft
- Mine Headframe
- Railway
- Road
- Trail
- Natural Gas Pipeline
- Utilities
- Tower

Land Tenure

- Freehold Patent:
- Surface And Mining Rights
  - Surface Rights Only
  - Mining Rights Only
- Leasehold Patent:
- Surface And Mining Rights
  - Surface Rights Only
  - Mining Rights Only
- License of Occupation:
- Uses Not Specified
  - Surface And Mining Rights
  - Surface Rights Only
  - Mining Rights Only
- Other:
- Land Use Permit
  - Order In Council (Not open for staking)
  - Water Power Lease Agreement



LAND TENURE WITHDRAWALS

- Areas Withdrawn from Disposition
- Mining Acts Withdrawal Types
- Surface And Mining Rights Withdrawn
- Surface Rights Only Withdrawn
- Mining Rights Only Withdrawn
- Order In Council Withdrawal Types
- Surface And Mining Rights Withdrawn
- Surface Rights Only Withdrawn
- Mining Rights Only Withdrawn

IMPORTANT NOTICES



LAND TENURE WITHDRAWAL DESCRIPTIONS (list may not be complete)

Identifier	Type	Date	Description
W 106/84	Ws	Jan 1, 2001	SURFACE RIGHTS WITHDRAWN FROM STAKING SECTION 36/80 ORDER NRW 100/84
WO-583	Wsm	Jan 1, 2001	SURFACE AND MINING RIGHTS WITHDRAWN FROM STAKING SECTION 36/80 ORDER NO. WO-583

IMPORTANT NOTICES

Areas under which special regulation, limitations or conditions exist that affect normal prospecting, staking and mineral development activities

Those wishing to stake mining claims should consult with the Provincial Mining Records' Office of the Ministry of Northern Development and Mines for additional information on the status of the lands shown hereon. This map is not intended for navigational, survey, or land title determination purposes as the information shown on this map is compiled from various sources. Completeness and accuracy are not guaranteed. Additional information may also be obtained through the local Land Titles or Registry Office, or the Ministry of Natural Resources.

The information shown is derived from digital data available in the Provincial Mining Records' Office at the time of downloading from the Ministry of Northern Development and Mines web site.

General Information and Limitations

Contact Information:  
Provincial Mining Records' Office  
Walker Green Miller Centre 933 Ramsey Lake Road  
Sudbury ON P3E 6B5  
Home Page: [www.mdm.gov.on.ca/MNDM/MINES/LANDS/Intsrmpgpe.htm](http://www.mdm.gov.on.ca/MNDM/MINES/LANDS/Intsrmpgpe.htm)

Toll Free  
Tel: 1 (888) 415-9845 ext 574  
Fax: 1 (877) 670-1444

Map Datum: NAD 83  
Projection: UTM (6 degree)  
Topographic Data Source: Land Information Ontario  
Mining Land Tenure Source: Provincial Mining Records' Office

This map may not show unregistered land tenure and interests in land including certain patents, leases, easements, right of ways, flooding rights, licences, or other forms of disposition of rights and interest from the Crown. Also certain land tenure and land uses that restrict or prohibit free entry to stake mining claims may not be illustrated.