



CANADIAN EXPLORATION SERVICES LTD

PO Box 219, 14579 Government Road, Larder Lake, Ontario, P0K 1L0, Canada
Phone (705) 643-2345 Fax (705) 643-2191 www.cxsltd.com

Elk Lake Mining Company Limited

Magnetometer Survey Over the

Elk Lake Property

James Township, Ontario

TABLE OF CONTENTS

1.	SURVEY DETAILS	3
1.1	PROJECT NAME.....	3
1.2	CLIENT	3
1.3	LOCATION	3
1.4	ACCESS.....	4
1.5	SURVEY GRID	4
2.	SURVEY WORK UNDERTAKEN.....	5
2.1	SURVEY LOG.....	5
2.2	PERSONNEL	5
2.3	SURVEY SPECIFICATIONS.....	5
3.	OVERVIEW OF SURVEY RESULTS.....	6
3.1	SUMMARY INTERPRETATION	6

LIST OF APPENDICES

APPENDIX A: STATEMENT OF QUALIFICATIONS
APPENDIX B: THEORETICAL BASIS AND SURVEY PROCEDURES
APPENDIX C: INSTRUMENT SPECIFICATIONS
APPENDIX D: LIST OF MAPS (IN MAP POCKET)

LIST OF TABLES AND FIGURES

Figure 1: Location of the Elk Lake Property.....	3
Figure 2: Claim Map with Elk Lake Property Traverses.....	4
Figure 3: Google Image with Magnetic Overlay.....	6
Table 1: Survey Log	5

1. SURVEY DETAILS

1.1 PROJECT NAME

This project is known as the **Elk Lake Property**.

1.2 CLIENT

Elk Lake Mining Company Ltd.
P.O. Box 219
14579 Government Road
Larder Lake, Ontario
P0K 1K0

1.3 LOCATION

The Elk Lake Property is located in James Township approximately 2 km southwest of Elk Lake, Ontario. The survey area covers parts of claims numbered 4240784 and 4273173 located in James Township, within the Larder Lake Mining Division.



Figure 1: Location of the Elk Lake Property

1.4 ACCESS

Access to the property was attained with a 4x4 truck along highway 65. From Elk Lake highway 65 was travelled west for 1.7km where the truck was parked at a location 100m from the traverse area.

1.5 SURVEY GRID

The traversed lines were established using a GPS in conjunction with the execution of the survey. The GPS operator would establish sample locations while remaining approximately 12.5m in front of the magnetometer operator. GPS waypoints, magnetic samples were taken every 12.5m along these controlled traverses. The GPS used was a Garmin GPSMAP 62s with an external antenna for added accuracy.

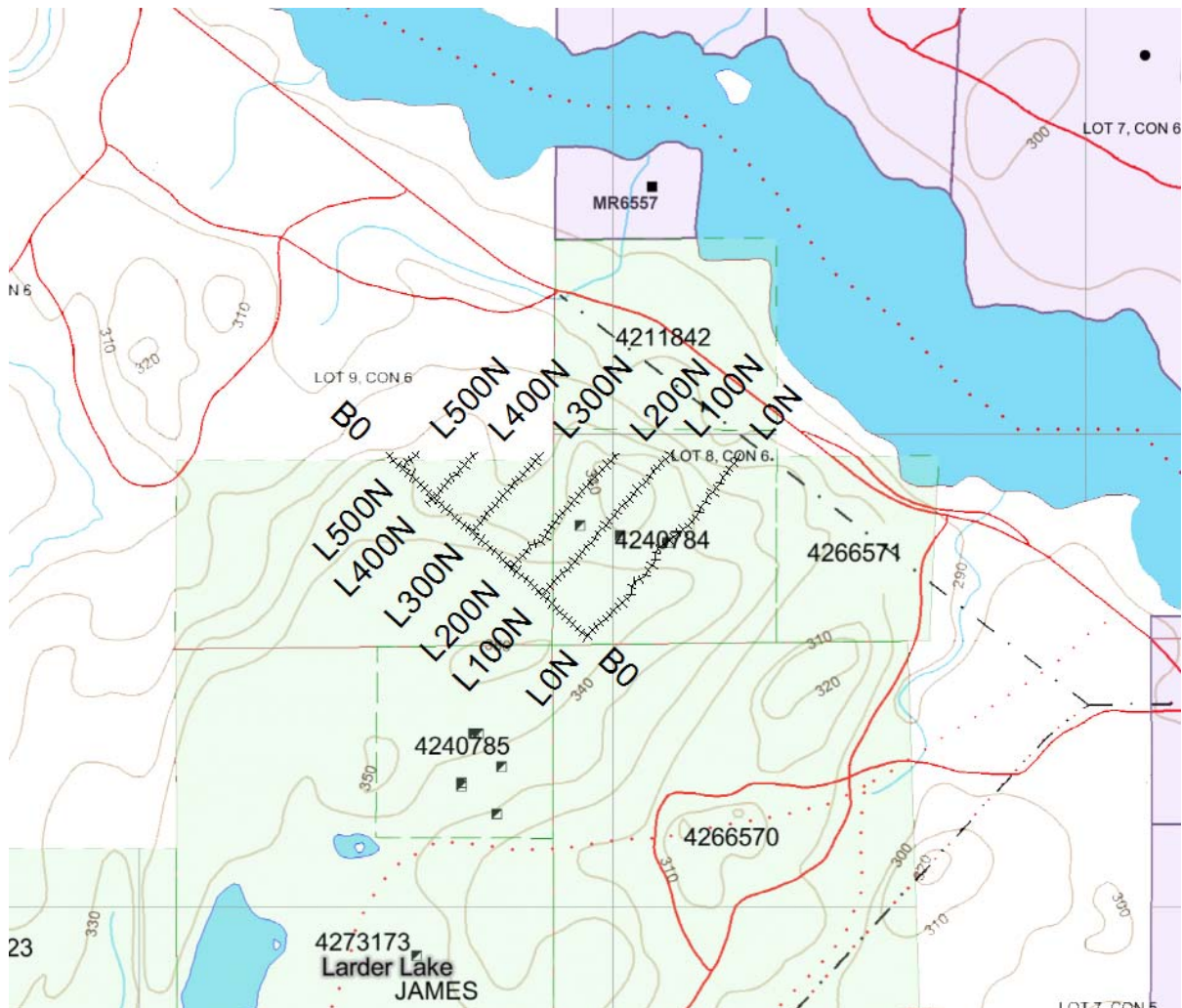


Figure 2: Claim Map with Elk Lake Property Traverses

2. SURVEY WORK UNDERTAKEN

2.1 SURVEY LOG

Date	Description	Line	Min Extent	Max Extent	Total Survey (m)
February 1, 2016	Locate survey area and start data acquisition.	0N	0E	500E	500
		100N	0E	412.5E	412.5
		200N	0E	337.5E	337.5
		300N	0E	225E	225
		400N	12.5W	137.5E	150
		500N	0	50	50
		0E	0N	575N	575
					2250

Table 1: Survey Log

2.2 PERSONNEL

Jason Ploeger of Larder Lake, Ontario, conducted all the magnetic data collection with Bill Bonney of Kirkland Lake, Ontario being responsible for the GPS control and GPS waypoint collection.

2.3 SURVEY SPECIFICATIONS

The survey was conducted with a GSM-19 v7 Overhauser magnetometer with a second GSM-19 magnetometer in base station mode for diurnal correction.

A total of 2.25 line kilometers of magnetometer was read over the Elk Lake Property on February 1, 2016. This consisted of 180 magnetometer samples taken at a 12.5m sample interval.

3. OVERVIEW OF SURVEY RESULTS

3.1 SUMMARY INTERPRETATION

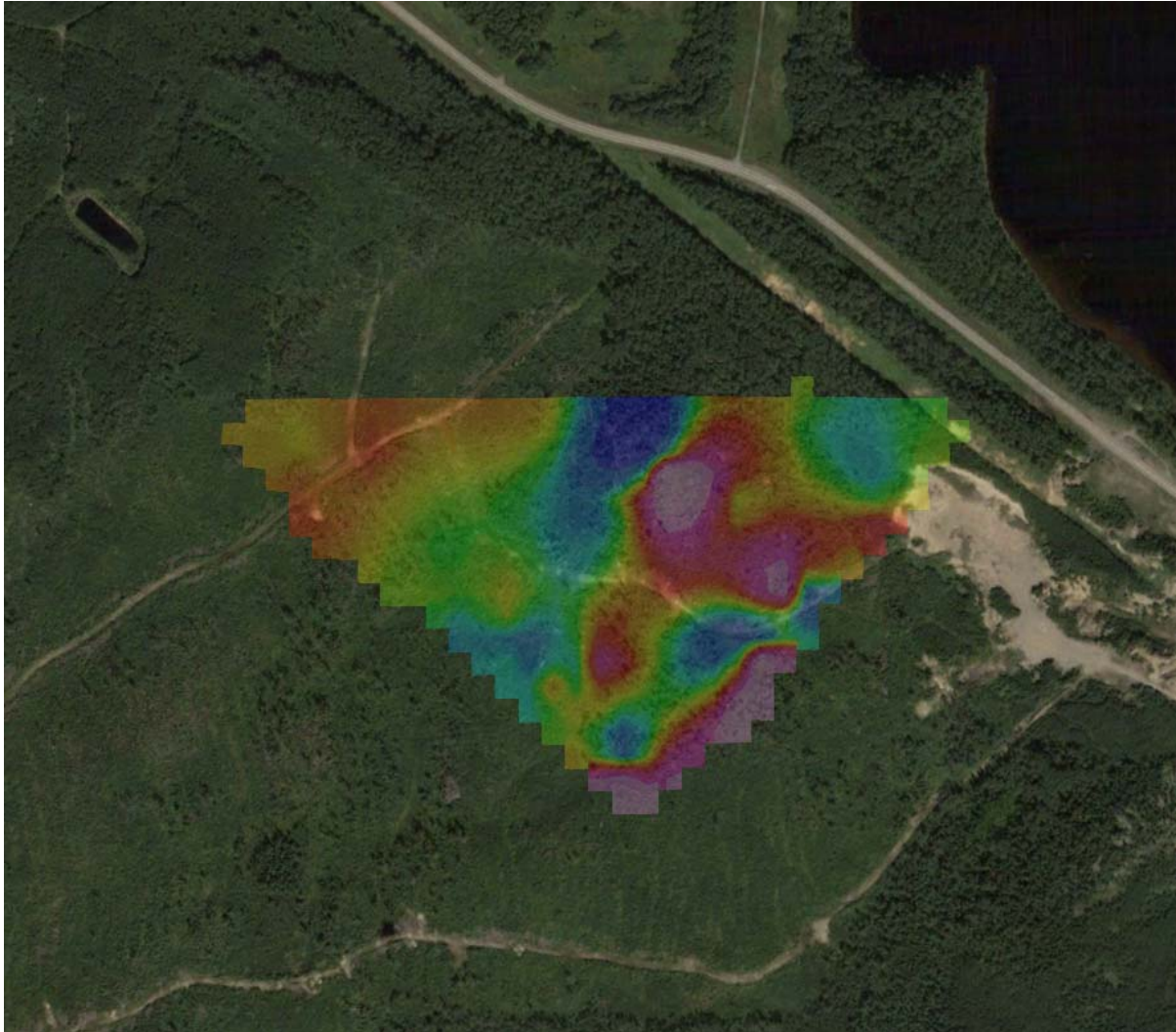


Figure 3: Google Image with Magnetic Overlay

The survey indicates the probable presence of two geological units.

The eastern unit appears to exhibit intense shifts in the magnetic signature. This unit resembles the signature that would be expected from the Nipissing Diabase. The abrupt contrast from erratic to smooth magnetic signatures indicates this most likely represents the bottom of the sill.

The western units appears to exhibit a more uniform signature. This likely indicates a uniform sedimentary unit.

APPENDIX A

STATEMENT OF QUALIFICATIONS

I, C. Jason Ploeger, hereby declare that:

1. I am a professional geophysicist with residence in Larder Lake, Ontario and am presently employed as a Geophysicist and Geophysical Manager of Canadian Exploration Services Ltd. of Larder Lake, Ontario.
2. I am a Practising Member of the Association of Professional Geoscientists, with membership number 2172.
3. I graduated with a Bachelor of Science degree in geophysics from the University of Western Ontario, in London Ontario, in 1999.
4. I have practiced my profession continuously since graduation in Africa, Bulgaria, Canada, Mexico and Mongolia.
5. I am a member of the Ontario Prospectors Association, a Director of the Northern Prospectors Association and a member of the Society of Exploration Geophysicists.
6. I do not have nor expect an interest in the properties and securities of **Elk Lake Mining Company Ltd.**
7. I am responsible for the final processing and validation of the survey results and the compilation of the presentation of this report. The statements made in this report represent my professional opinion based on my consideration of the information available to me at the time of writing this report.



C. Jason Ploeger, P.Geo., B.Sc.
Geophysical Manager
Canadian Exploration Services Ltd.

Larder Lake, ON
February 2, 2016

APPENDIX B

THEORETICAL BASIS AND SURVEY PROCEDURES

TOTAL FIELD MAGNETIC SURVEY

Base station corrected Total Field Magnetic surveying is conducted using at least two synchronized magnetometers of identical type. One magnetometer unit is set in a fixed position in a region of stable geomagnetic gradient, and away from possible cultural effects (i.e. moving vehicles) to monitor and correct for daily diurnal drift. This magnetometer, given the term 'base station', stores the time, date and total field measurement at fixed time intervals over the survey day. The second, remote mobile unit stores the coordinates, time, date, and the total field measurements simultaneously. The procedure consists of taking total magnetic measurements of the Earth's field at stations, along individual profiles, including Tie and Base lines. A 2 meter staff is used to mount the sensor, in order to optimally minimize localized near-surface geologic noise. At the end of a survey day, the mobile and base-station units are linked, via RS-232 ports, for diurnal drift and other magnetic activity (ionospheric and spheric) corrections using internal software.

For the gradiometer application, two identical sensors are mounted vertically at the ends of a rigid fiberglass tube. The centers of the coils are spaced a fixed distance apart (0.5 to 1.0m). The two coils are then read simultaneously, which alleviates the need to correct the gradient readings for diurnal variations, to measure the gradient of the total magnetic field.

APPENDIX C

GSM 19



Specifications

Overhauser Performance

- Resolution: 0.01 nT
- Relative Sensitivity: 0.02 nT
- Absolute Accuracy: 0.2nT
- Range: 20,000 to 120,000 nT
- Gradient Tolerance: Over 10,000nT/m
- Operating Temperature: -40°C to +60°C

Operation Modes

- Manual: Coordinates, time, date and reading stored automatically at min. 3 second interval.
- Base Station: Time, date and reading stored at 3 to 60 second intervals.
- Walking Mag: Time, date and reading stored at coordinates of fiducial.
- Remote Control: Optional remote control using RS-232 interface.
- Input/Output: RS-232 or analog (optional) output using 6-pin weatherproof connector.

Operating Parameters

- Power Consumption: Only 2Ws per reading. Operates continuously for 45 hours on standby.
- Power Source: 12V 2.6Ah sealed lead acid battery standard, other batteries available
- Operating Temperature: -50°C to +60°C

Storage Capacity

- Manual Operation: 29,000 readings standard, with up to 116,000 optional. With 3 VLF stations: 12,000 standard and up to 48,000 optional.
- Base Station: 105,000 readings standard, with up to 419,000 optional (88 hours or 14 days uninterrupted operation with 3 sec. intervals)
- Gradiometer: 25,000 readings standard, with up to 100,000 optional. With 3 VLF stations: 12,000, with up to 45,000 optional.

Omnidirectional VLF

Performance Parameters: Resolution 0.5% and range to $\pm 200\%$ of total field.
Frequency 15 to 30 kHz.

Measured Parameters: Vertical in-phase & out-of-phase, 2 horizontal components, total field coordinates, date, and time.

Features: Up to 3 stations measured automatically, in-field data review, displays station field strength continuously, and tilt correction for up to $\pm 10^\circ$ tilts.

Dimensions and Weights: 93 x 143 x 150mm and weighs only 1.0kg.

Dimensions and Weights

Dimensions:

Console: 223 x 69 x 240mm

Sensor: 170 x 71mm diameter cylinder

Weight:

Console: 2.1kg

Sensor and Staff Assembly: 2.0kg

Standard Components

GSM-19 magnetometer console, harness, battery charger, shipping case, sensor with cable, staff, instruction manual, data transfer cable and software.

Taking Advantage of a “Quirk” of Physics

Overhauser effect magnetometers are essentially proton precession devices except that they produce an order-of magnitude greater sensitivity. These "supercharged" quantum magnetometers also deliver high absolute accuracy, rapid cycling (up to 5 readings / second), and exceptionally low power consumption.

The Overhauser effect occurs when a special liquid (with unpaired electrons) is combined with hydrogen atoms and then exposed to secondary polarization from a radio frequency (RF) magnetic field. The unpaired electrons transfer their stronger polarization to hydrogen atoms, thereby generating a strong precession signal-- that is ideal for very high-sensitivity total field measurement. In comparison with proton precession methods, RF signal generation also keeps power consumption to an absolute minimum and reduces noise (i.e. generating RF frequencies are well out of the bandwidth of the precession signal).

In addition, polarization and signal measurement can occur simultaneously - which enables faster, sequential measurements. This, in turn, facilitates advanced statistical averaging over the sampling period and/or increased cycling rates (i.e. sampling speeds).

APPENDIX C

GARMIN GPS MAP 62S



Physical & Performance:	
Unit dimensions, WxHxD:	2.4" x 6.3" x 1.4" (6.1 x 16.0 x 3.6 cm)
Display size, WxH:	1.43" x 2.15" (3.6 x 5.5 cm); 2.6" diag (6.6 cm)
Display resolution, WxH:	160 x 240 pixels
Display type:	transflective, 65-K color TFT
Weight:	9.2 oz (260.1 g) with batteries
Battery:	2 AA batteries (not included); NiMH or Lithium recommended
Battery life:	20 hours
Waterproof:	yes (IPX7)
Floats:	no
High-sensitivity receiver:	yes
Interface:	high-speed USB and NMEA 0183 compatible
Maps & Memory:	
Basemap:	yes
Preloaded maps:	no
Ability to add maps:	yes
Built-in memory:	1.7 GB
Accepts data cards:	microSD™ card (not included)
Waypoints/favorites/locations:	2000

Routes:	200
Track log:	10,000 points, 200 saved tracks
Features & Benefits:	
Automatic routing (turn by turn routing on roads):	yes (with optional mapping for detailed roads)
Electronic compass:	yes (tilt-compensated, 3-axis)
Touchscreen:	no
Barometric altimeter:	yes
Camera:	no
<u>Geocaching-friendly:</u>	yes (paperless)
<u>Custom maps compatible:</u>	yes
Photo navigation (navigate to geotagged photos):	yes
Outdoor GPS games:	no
Hunt/fish calendar:	yes
Sun and moon information:	yes
Tide tables:	yes
Area calculation:	yes
Custom POIs (ability to add additional points of interest):	yes
Unit-to-unit transfer (shares data wirelessly with similar units):	yes
Picture viewer:	yes
Garmin Connect™ compatible (online community where you analyze, categorize and share data):	yes

- *Specifications obtained from www.garmin.com*

APPENDIX D

LIST OF MAPS (IN MAP POCKET)

Posted contoured TFM plan map (1:2500)

- 1) ELK LAKE-ELK LAKE-MAG-CONT

Claim Map with Magnetic Traverses (1:20000)

- 2) ELK LAKE-ELK LAKE-GRID

TOTAL MAPS = 2