

We are committed to providing [accessible customer service](#).
If you need accessible formats or communications supports, please [contact us](#).

Nous tenons à améliorer [l'accessibilité des services à la clientèle](#).
Si vous avez besoin de formats accessibles ou d'aide à la communication, veuillez [nous contacter](#).

Work report for 4274207, 2014-2015.

While staking this claim on March 3rd 2014 a mineralized zone was discovered just south of the North line at 16 370248E 5390913N. While diverting around a cliff I discovered numerous flakes of Molybdenum on the cliff wall I was going around. Although covered with frost they still stood out enough to notice. The Initial showing was around 20 flakes with some as large as my thumb nail spread out over about 3m of the cliff face from ground level up to about 2.5m in height. A picture of the initial discovery is included.

On June 1st 2014 Allan Onchulenko and I visited the new showing, now named the Geon occurrence. We found the initial showing to be over about 5 m along the cliff face and about 3 m in height. The rock is a pinkish pegmatite with areas of quartz veining and quartz blotches up to 40cm across. The rock transitions to granite in some areas above and off to the NE and SW along the cliff face. The Molybdenum is found in the pegmatite and the quartz very much like at Anderson Lake to the North 2km. On the Ground directly below the cliff we found 2 flatter boulders that had evidently peeled off the cliff, and found some even better samples of Mo in the same pink pegmatite/quartz mix in these two rocks. At this point there was still snow in the shade of the cliff and we could not examine the ground very well. The rest of the day was spent exploring the cliff face, first to the NE for about 120m to where it intersects the trail to Anderson Lake and then we prospected on top of the cliff back towards and about 100m past the showing. We found no Molybdenum on the cliff or on top of it even though we found lots of pegmatite and quartz along the way.

On November 14th 2015 Allan Onchulenko, Ben Kuzmich and I visited the Geon showing and spent the day exploring in the immediate area of the initial discovery. What we found was very encouraging. We started at the cliff face and expanded the showing to the south east in the broken talus 15m with a width of close to 5 m. We found many high grade samples on at least 11 different boulders. Ben has had some of these assayed and will be included with a map of the sample locations.

On November 27th Ben Kuzmich and I visited the claim for 4 hours to visit the Newest showing the Molly Creek showing. Ben had found this showing on trend following the cliff further to the south west by 90m at 16 U 370211 5390863 . He had found another solid zone of high grade multiple location samples. Parts of the cliff face and some of the talus was not visible as there was a layer of ice where the creek comes down. It will need to be explored more in the spring but already the showing is over a 12m by 10 m zone of cliff face and talus.

On November 28th 2015 Allan Onchulenko, Ben Kuzmich and I visited the claim to see the newest area the Molly Creek showing. We started at the Geon showing and worked our way the 90m SW along the cliff face to Molly creek. After examining and the area Ben had previously sampled we explored more above and below immediate area and then continued along trend to the south west. 301m SW from Molly Creek showing at 16 U

369997 5390650 we found and sampled another 1.5cm blotch of molybdenum in the same quartz/ pegmatite mix we had been finding on this face since the Geon showing. This area also had some ground water that had frozen up as it came down the cliff face and could not be fully examined.

At the end of the day we were all pretty happy as we had showings over a 391m long north east trending zone. A map of the tracks for the day is included as 4274217.28.11.2015 tracks.

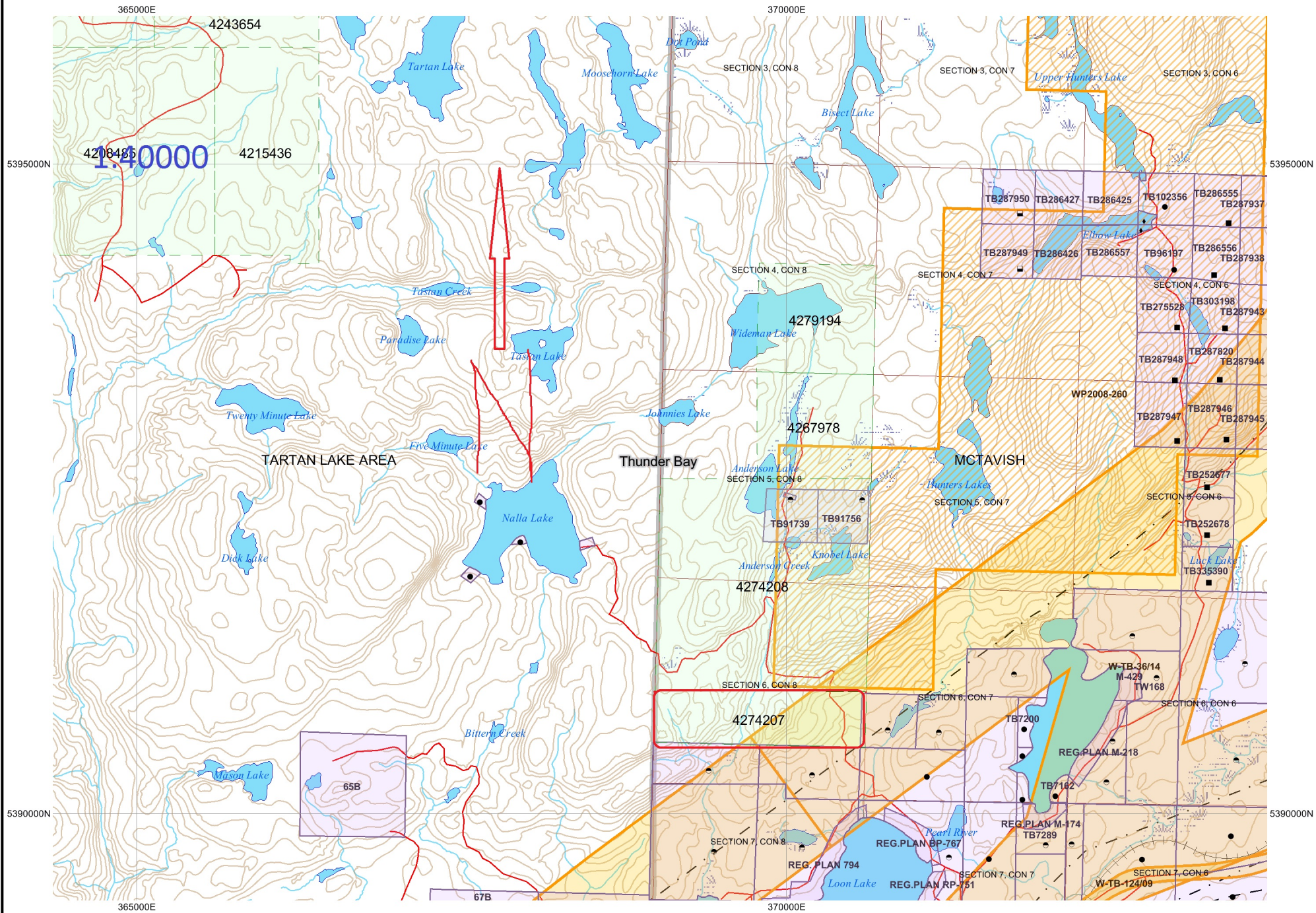
On December 6th 2015 Ben Kuzmich and I returned again for the day with the goal of starting at the Geon showing and following the cliff trend to the north east this time. We spent close to half a day on 4274207 and the rest of the day following the trend into 4274208. 270m NE along the same trend at 16 U 370417 5391191 we located another small mineralized zone with blotches of molly up to 1cm square. Then another small area with a bunch of larger flakes of moly at 16 U 370417 5391191. Once again we left the day feeling really good about expanding the showings another 307m to the NE.

On December 12th 2015 Allan Onchulenko and I visited 4274207 for the day. We started out on the north line in the middle of the claim block. This is where the main creek makes its way down a valley. We were snow free and dry till around 11am and by 2 pm we could no longer see anymore rock and had to end the day being very wet and tired. We encountered much of the same pegmatite and saw nothing very interesting along the way.

Ben Kuzmich has done some mapping and sampling and we will be including the results of this at a later date.

Totals for claimed expenses for 4274207.

June 1 st 2014	2 people x 1day = 2days at \$250	=\$500
November 14 th 2015	3 people x 1day = 3days at \$250	=\$750
November 27 th 2015	2 people x .5 day = 1day at \$250	=\$250
November 28 th 2015	3 people x 1day = 3days at \$250	=\$750
December 6 th 2015	2 people x .5day = 1 day at \$250	=\$250
December 12 th 2015	2 people x 1 day = 2days at \$250	=\$500
	Prospecting total	=\$3000
Six trips at 98 km return = 588km x \$.50 = \$294	Transportation total	= \$294
	Total claimed	\$3294



12/12/2015 12:38:58 pm
12 pm 3 pm

Ontario Geological Survey

© 2016 Google

Google earth

Imagery Date: 5/21/2015 16 U 369365.13 m E 5390922.20 m N elev 1394 ft eye alt 3258 ft

4274207



Ontario Geological Survey



MO0512152 102

MO051215

Google earth

Click to zoom in on the time slider.
12/15/2012
2012 2016

Ontario Geological Survey

4274208

4274207

ANNMOLLY NEW

Google earth

Imagery Date: 5/21/2015 16 U 370265.92 m E 5390962.84 m N elev 1197 ft eye alt 1993 ft

4274208

Ontario Geological Survey

4274207

MO0512152 102

MO051215

698m

ANNMOLLY NEW

MOLLY CREEK

NEW02

©-2016-Google

Google earth

11/28/2015 10:16:00 am
10 am 2 pm



Ontario Geological Survey

ANNMOLLY NEW

MOLLY CREEK

4274207

NEW02

Handwritten black scribbles with arrows pointing to Molly Creek and ANNMOOLLY NEW

Handwritten red 'N' with an upward-pointing arrow

© 2016 Google

Google earth

