

We are committed to providing [accessible customer service](#).
If you need accessible formats or communications supports, please [contact us](#).

Nous tenons à améliorer [l'accessibilité des services à la clientèle](#).
Si vous avez besoin de formats accessibles ou d'aide à la communication, veuillez [nous contacter](#).

2015 Work Report For 4265437

Claim 4265437 is located on the eastern top portion of Church Lake in the Kawashegamuk Lake area in the Kenora District. Access is 47 km west of Ignace turn south at Bourups Corners on Sand Point Road. It is 12 km south to a small road that leads into Church/Menin Lake. From here it is a 3 km quad ride into the South or Main trench.

For 2015 Allan Onchulenko and I spent three nights camped at the Church Lake property. On August 3rd we organized our gear, loaded campers and quads and drove to the pit on the Sand Point lodge road where we set up camp and got the gear ready for the next day.

August 4th we rode the quads into the Main Trench on the east Shore of Church Lake. The plan for the day was to brush out the main trench to be able to get a better look at the quartz vein. The last work done in here was in 1995 so it was quite grown in and had a number of blow downs fallen in to it. We spent the whole day working on the trench.

August 5th we rode back to the main trench and spent 4 more hours cleaning debris out of the trench area and peeling back some of the moss and washing off the wall trying to expose the vein. We were able to find the vein in the wall under the moss in a few spots and even found some VG in the quartz in a patch of anchorite staining.

We then spent the rest of the day doing a reconnaissance loop following the strike of the vein to the north over the mountain and then wandering west back to the shore of the lake where we made our way past the North Vein and then back to the Quads. Along this route we did not find any extensions of the quartz vein. The rock we saw along our loop was the same dark gabbros found outside the main shear at the main trench. Included is a map of the loop we did.

August 6th we packed up the camper and quads and gear, drove back the 3.5 hours to Thunder Bay and de mobilized all our gear.

I am claiming the following:

Aug 3 rd . Half of a day 2 people for mobilization of equipment.	\$250
Aug 4 th . Full day 2 people clearing the trench.	\$500
Aug 5 th . Full day 2 people clearing the trench and prospecting.	\$500
Aug 6 th . Half day 2 people de-mobilization of equipment.	\$250
320 km one way = 640 * .50 per km =	\$320



Total \$1820

Below are the before and after pictures of the Trench.

4265437

800m

tracks for
2015/08/05
prospecting loop

800m

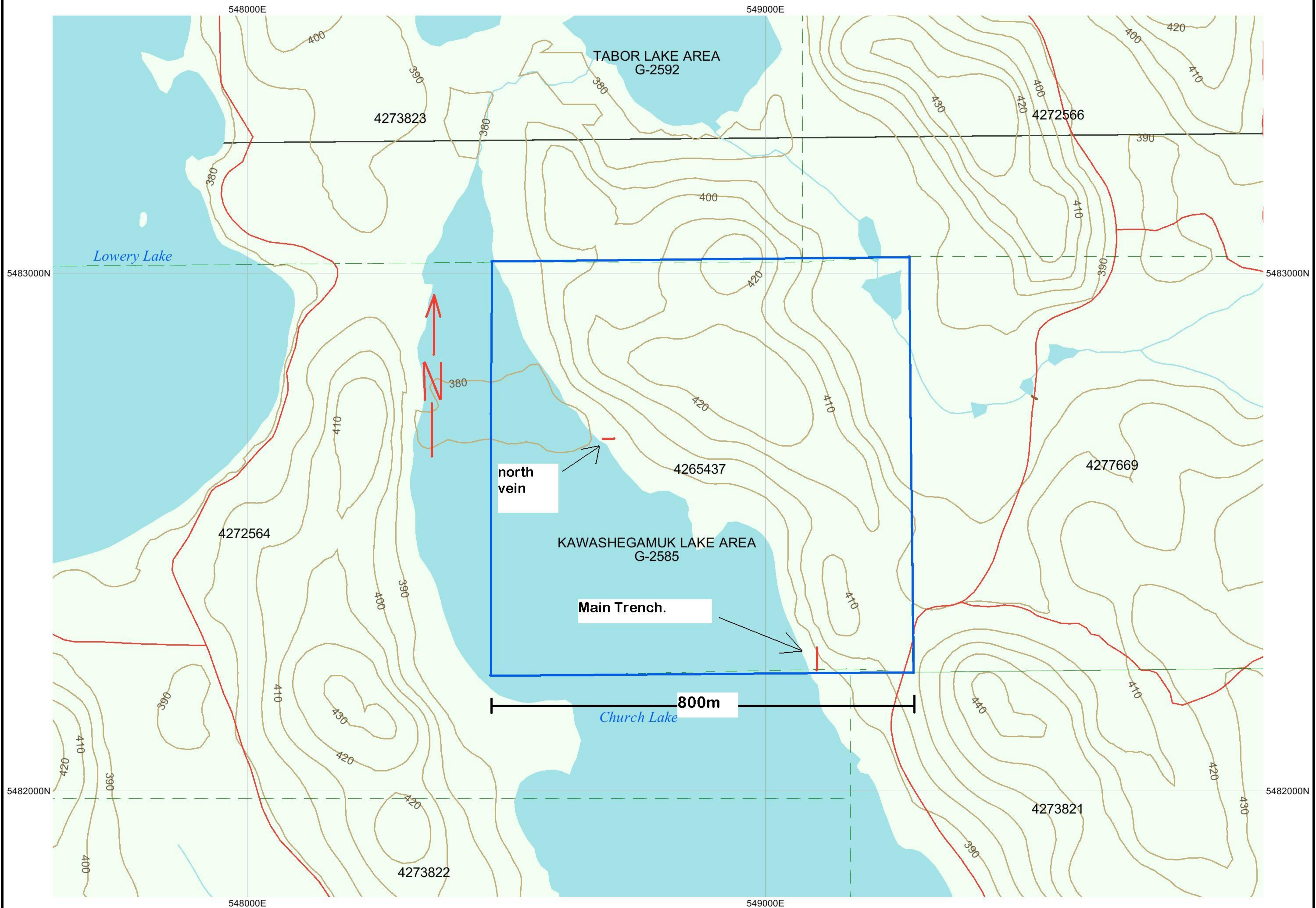
Church Lake



© 2015 Cnes/Spot Image



15 U 548700.34 m E 5482412.48 m N elev 1251 ft eye alt 9107 ft



Main trench before clearing. Standing in the south end of the trench looking north.



2015/08/04

4265437 the main trench looking south before clearing.



2015/08/04

4265437 main trench
looking north after
clearing



2015/08/05

4265437 main trench
looking south after
clearing



2015/08/05

4265437 main trench
looking at the east at the
quartz vein



area sampled that has visible gold in
place and in the sample.

2015/08/05