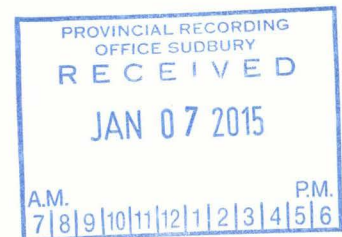
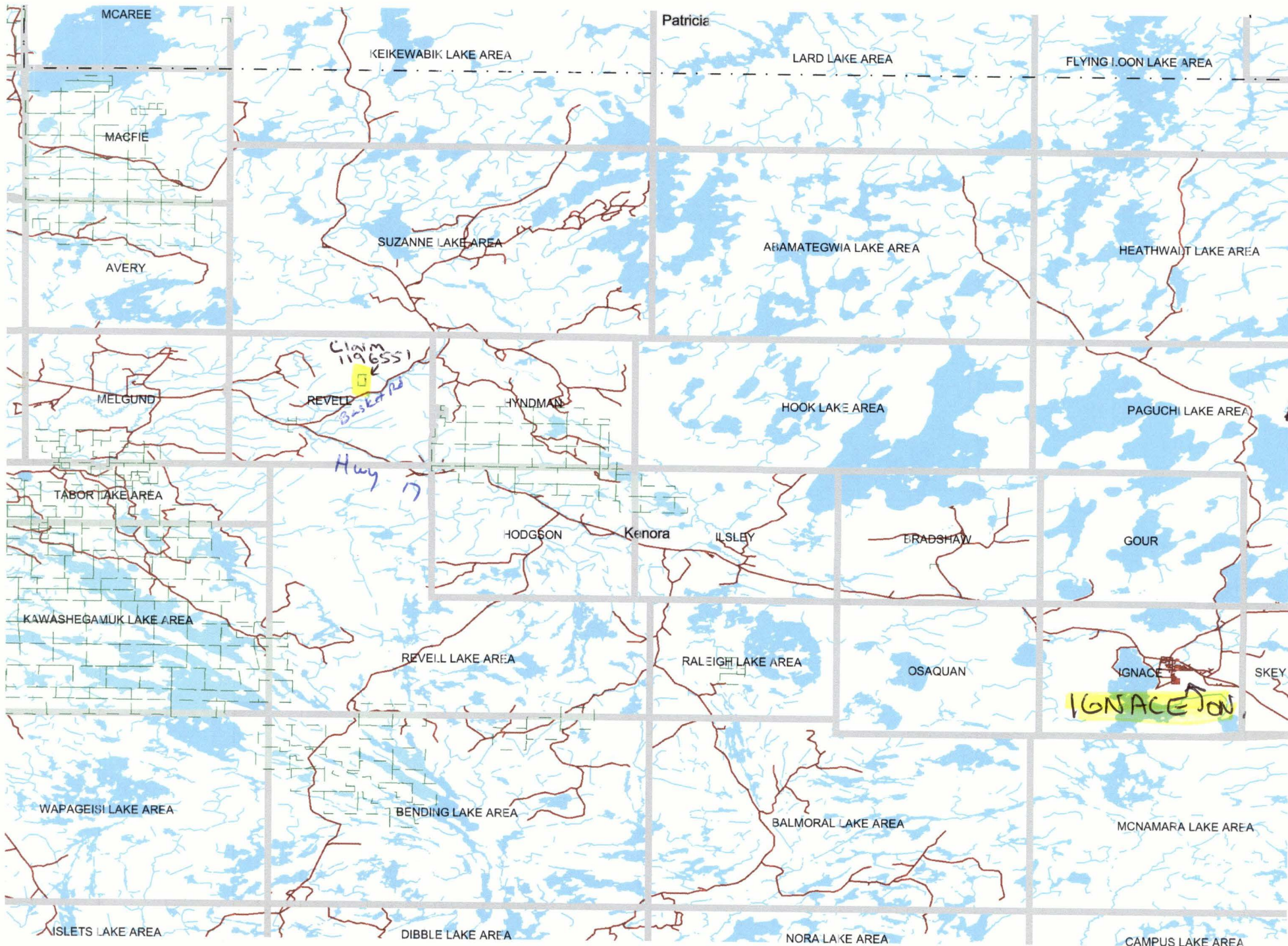


Prospecting claim 1196551 July 12, 13 2014

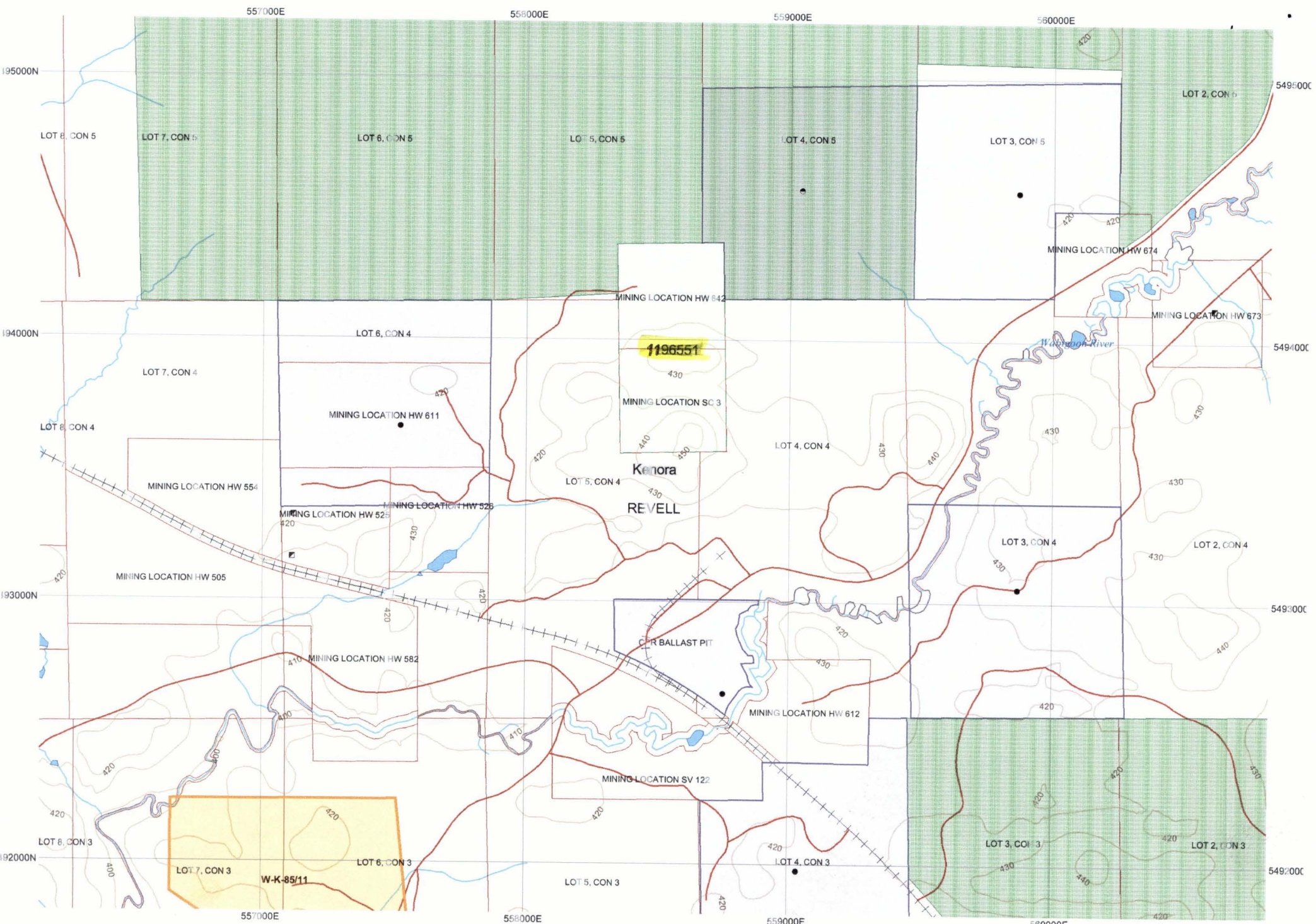
2 . 5 5 6 0 0

On July 12-13 2014 Thunder Bay prospectors Peter Gehrels and Allan Onchulenko spent 2 days prospecting claim 1196551 in Revell Township. The claim is located in Revell Township approximately 28 km's east of Dinorwic, Ontario and approximately 46 km's west of Ignace, Ontario. The Basket Lake road heads north from Highway 17 travel approximately 4.2 km's from the highway north and turn left here there is a place to park and a trail leading into parts of the property. Recent logging has increased access to several parts of the claim. The goal of the visit was to locate an old trench and pit located near a swamp in the northern part of the claim also prospect the surrounding area. An atv was used to gain access to the lower part of claim than travel on foot was necessary. The trench was found at utm 15-558410 east and 5494196 north also we located the pit at utm-15-558427 east and 5494189 north. Most of the day was spent clearing dirt and debris from the trench to better examine the rock. A quartz vein up to 1.2 m in width has been trenched and exposed. The host rock is a mafic volcanic and the quartz contains patches of pyrite and chalcopryrite irregularly distributed through the vein. More work will be needed to better examine the potential of the showing. On July 13 we were able to follow and expose the vein for about 30 m along strike from the trench past the pit and further east. We traversed part of the claim and were able to locate several small quartz veins also hosted in mafic volcanic rock. At location utm-15-558422 east and 5493810 north several small quartz veins were located with minor amounts of pyrite. Also at location utm 15-558539 east and 5493799 north a quartz vein was located on a rock wall with minor pyrite. Both of these veins have the same host rock as the trench and are located between 350-390m south of the trench.





Claim location 1196551



UTM Zone 15
000m grid

Claim 1196551 Revell Township

Wetland

Traverse July 13 2014
Claim 1196551
Revell Township

186.41 km

NW

300m

1-542

