

We are committed to providing [accessible customer service](#).
If you need accessible formats or communications supports, please [contact us](#).

Nous tenons à améliorer [l'accessibilité des services à la clientèle](#).
Si vous avez besoin de formats accessibles ou d'aide à la communication, veuillez [nous contacter](#).

Report on
2014 Construction of Geotechnical Drill Trails and Drill Pads
Neville-Potier Property

Porcupine Mining Division

Neville Township

Ontario, Canada

41 P/12

Mining Claims:

42551592, 4248790, 4251589, 4255034, 4250020, 4219550, and 4251596

March 06, 2015

Jillian Craig, B.Sc, P. Geo
Alan Smith, M.Sc, P. Geo

Table of Contents:

- 1.0 Summary
- 2.0 Introduction
 - 2.1 Purpose of the report
- 3.0 Property Description and Location
 - 3.1 Property Description
- 4.0 Accessibility, Climate and Physiography
 - 4.1 Location and Access
 - 4.2 Physiography and Vegetation
- 5.0 Previous and Historical Exploration Work
 - 5.1 Exploration History
- 6.0 Geological Setting
 - 6.1 Regional Geology
 - 6.2 Property Geology
- 7.0 2014 Geotechnical Drilling Program
 - 7.1 Geotechnical Drill Program
 - 7.2 Location of Geotechnical Drill Holes
 - 7.3 Logistics of Drill Trails and Drill Pad Creation
 - 7.4 Trelawney Mining and Exploration Inc. Personnel
- 8.0 Conclusions and Recommendations
- 9.0 References
- 10.0 Statement of Qualifications

Figures:

Figure 1: Neville-Potier Property Location Map

Figure 2: Neville-Potier Property Claim Map

Figure 3: Regional Geology

Figure 4: Geotechnical Drill Hole and Test Pit Locations and Drill Trail Map

Tables:

Table 1- Summary of Information for Staked Claims Worked

Appendices:

Appendix A- List of Claims of the Neville-Potier Claim Block

1.0 Summary:

The Neville-Potier Project is a contiguous claim block consisting of 6000 Hectares in Neville and Potier Townships. These claims are positioned within as well as North and South of the contact between the Swayze Greenstone Belt and the Kenogamissi batholith to the North. The claims are located about 3 kilometers northwest of the Côté Gold deposit.

Trelawney Mining & Exploration personnel conducted logistical ground work for the 2014 geotechnical drilling program on the Neville-Potier property on behalf of GoldON Resources Ltd. The work consisted of access trail preparation to specified drill sites. The present report details the drill trail preparation and includes a brief description of the drilling program. The companion report 2014 Field Investigation Summary Report - Goldon Resources Ltd, Gogama Ontario details the nature of the drilling including field sample collection and test work performed.

The preparation work for the 2014 geotechnical program involved use of a Trelawney Mining & Exploration excavator starting on July 07, 2014 to create 4.77 km of drill trails and 21 drill pads. Following drill trail and pad preparation, the geotechnical drilling program was executed by Marathon Drilling Co. Ltd from July 27, 2014 - August 28, 2014. A total of twenty-one geotechnical drill holes were completed for a total of 249.3 meters. Trelawney Mining & Exploration's excavator was later used for digging test pits from September 28, 2014 to October 4th, 2014. Total excavator usage spanned 25 man days over the period from July 07, 2014 to October 4th, 2014.

Starting on September 28, 2014 and concluding on October 4th, 2015 test pits were dug by excavator as the geotechnical program continued. The purpose of the geotechnical program was to investigate and characterize foundation conditions and to install hydrological monitoring wells related to the proposed project infrastructure of the Côté project. The hydrological monitoring wells were installed for use in hydrogeological assessments, baseline studies and long term monitoring to evaluate the general soil and bedrock conditions.

Trelawney Mining & Exploration personnel carried out much of the ground logistical work required for the 2014 geotechnical drilling campaign. This included the use of excavators and equipment to build the drill trails to each drill site. The excavator also performed drill pad clearing. After the test pits were completed, specific reclamation work was completed as required. The remediation efforts were also performed by Trelawney Mining & Exploration personnel.

2.0 Introduction:

2.1: Purpose of the report:

This report has been prepared to meet the requirements for the filing of assessment work under the provisions of the Ontario Mining Act and describes logistical work (site access preparation) performed during a geotechnical drilling program supervised by Trelawney Mining and Exploration Inc. personnel on behalf of GoldON Resources Ltd. in Neville and Potier Townships, within the South Swayze Property, Porcupine Mining District, Ontario.

The Neville-Potier Project is located in Neville and Potier townships and consists of 6000 hectares of contiguous claims. These claims are positioned within as well as north and south of the contact between the Swayze Greenstone Belt and the Kenogamissi batholith to the north. The claims are located 3 kilometers from IAMGOLD's Cote Gold deposit.

Following a 2014 winter geophysical I.P. survey, Trelawney Mining and Exploration personnel carried out a geological mapping, prospecting and sampling program during the summer 2014 field season on the property for GoldON Resources Ltd. At approximately the same time, a geotechnical drilling program began on July 07, 2014. The geotechnical drilling required access to the planned drill sites. This groundwork of clearing drill trails and constructing the drill pads was undertaken by Trelawney Mining and Exploration personnel with use of an excavator operator and a link belt 350 Excavator over 25 man days.

3.0 Property Description and Location:

Figure 1: Neville-Potier Property Location



3.1 Property Description:

The Neville-Potier Property is a large contiguous mining claim block containing 375 claim units and covering 6000 hectares in Potier and Neville townships within the Porcupine Mining Division. The mining claims are 100% owned by GoldON Resources Ltd. Figure 2 depicts the extent of the claims composing the Neville-Potier Property along with the claims drilled on during the 2014 geotechnical drilling program.

The drill trails were made on 7 claims within the Neville-Potier claim block. These claims are all 16 unit claim blocks with the exception of one 15 unit claim block, 4251596. The claims which experienced clearing for drill trails and drill pads were claim numbers 4255034, 4250020, 4219550, 4251589, 4248790, 4251592 and 4251596. Table 1 summarizes information for those claims on which the geotechnical drilling program and drill trail clearing was completed. Locations of the geotechnical drill holes and test pits with respect to claim boundaries is provided on Figure 4.

Table 1: Summary of Information for Staked Claims Worked:

Claim No.	Claim Units	Owner	Due Date	Township
4248790	16	100% GoldON Resources Ltd.	Mar 16 2015	Neville
4251592	16	100% GoldON Resources Ltd.	Mar 16 2015	Neville
4251589	16	100% GoldON Resources Ltd.	Mar 16 2015	Neville
4255034	16	100% GoldON Resources Ltd.	Mar 16 2015	Neville
4250020	16	100% GoldON Resources Ltd.	Mar 16 2015	Neville
4219550	16	100% GoldON Resources Ltd.	Mar 16 2015	Neville
4251596	15	100% GoldON Resources Ltd.	Mar 16 2015	Neville

4.0 Accessibility, Climate and Physiography

4.1 Location and Access:

The Neville-Potier Property lies within the Porcupine Mining District in Neville and Potier townships on NTS map sheets 41 O/09 and 41 P/12. The claims are located approximately 27 kilometers southwest of Gogama, Ontario. Access to the property is via the Chester Road, a secondary gravel logging road that heads north from the Sultan Road near kilometer 8. The Sultan Road heads west-northwest at Highway 144's intersection with Highway 560 near the Watershed, 155 kilometers north of Sudbury.

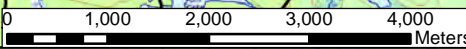
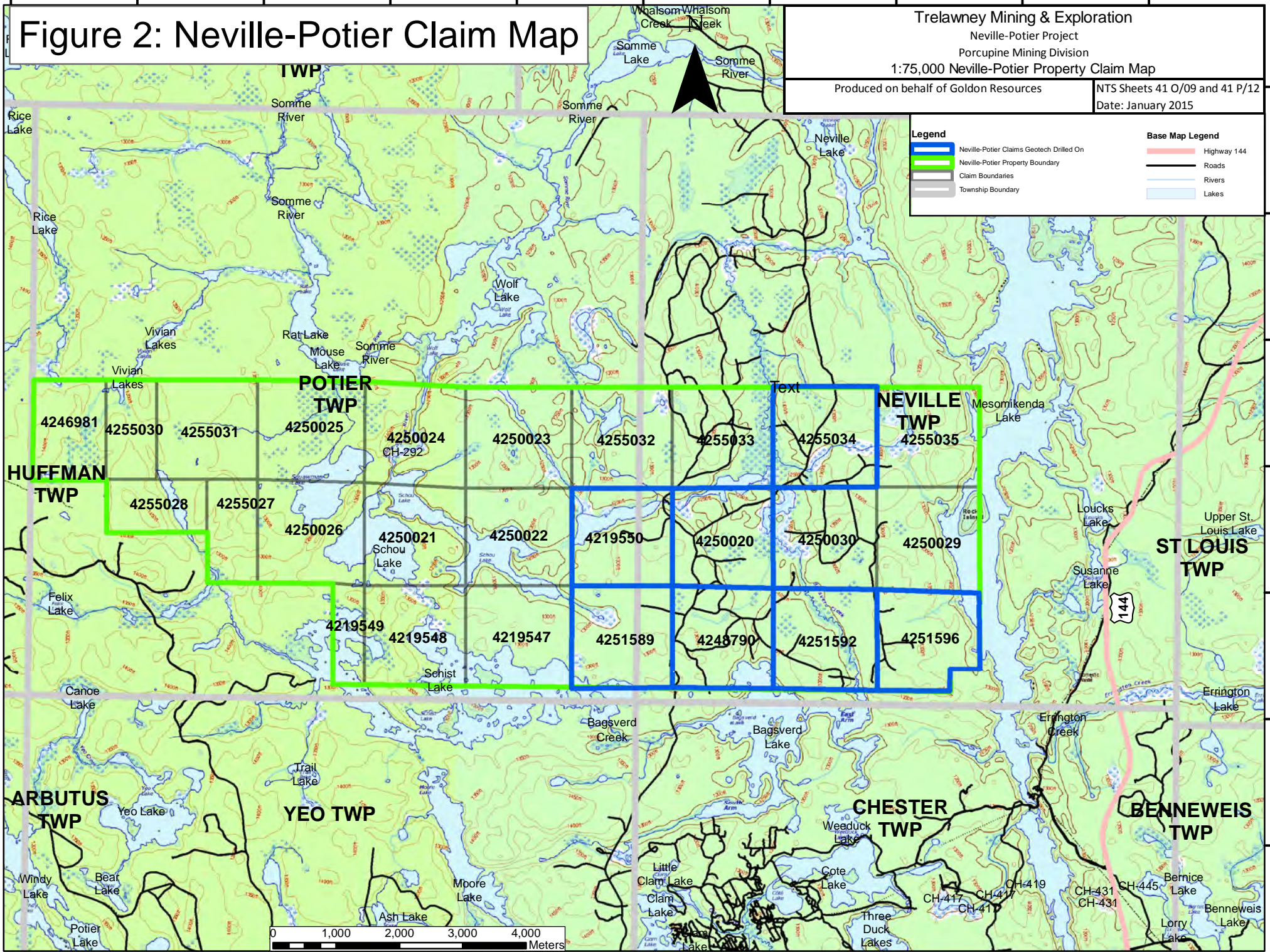
Figure 2: Neville-Potier Claim Map

Trelawney Mining & Exploration
 Neville-Potier Project
 Porcupine Mining Division
 1:75,000 Neville-Potier Property Claim Map

Produced on behalf of Goldon Resources

NTS Sheets 41 O/09 and 41 P/12
 Date: January 2015

Legend		Base Map Legend	
	Neville-Potier Claims Geotech Drilled On		Highway 144
	Neville-Potier Property Boundary		Roads
	Claim Boundaries		Rivers
	Township Boundary		Lakes



4.2 Physiography and Vegetation:

The climate on the Neville-Potier Property is similar to that of Timmins to the north. Environment Canada notes a temperate range of +38.9 degrees Celsius to -45.6 degrees Celsius. Precipitation in both snow and rain form average to approximately 85cm annually.

The GoldON Property hosts extensive tree cover with limited topographic relief and local cedar swamps.

5.0 Previous and Historical Exploration Work

The Neville-Potier property exploration history recorded from the 1950's through to 2014 includes a variety of surveys ranging from geological mapping and prospecting through to the most recent I.P. geophysical survey conducted by GoldON Resources Ltd. in the winter of 2014. The following synopsis is taken from online assessment report documents provided by the MNDM.

5.1 Exploration History:

Previous historical exploration work is summarized below for GoldON Resources Ltd.'s Neville-Potier Property:

1958: A 2 hole diamond drill program was performed by Three Duck Lake Syndicate within the Swayze Greenstone Belt. A total of 617 feet were drilled.

1970: Geological and geochemical soil sampling surveys were performed on a group of 22 claims in Potier Township by Siscoe Metals. High copper values were detected in the soil samples and thought to be due to chalcopyrite rich gossanous zones.

1971: An IP and resistivity survey was performed by Siscoe Metals on their Triduc Property in Potier Township. Several weak anomalies were found.

1979: Cominco Ltd. Conducted a geological mapping, rock sampling and magnetometer survey to delineate a band of iron formation located mainly under Schist Lake. No significant Au assays were reported.

1980: Hargor Resources Inc. performed airborne electromagnetic, magnetometer and electromagnetic VLF over Neville Township and the surrounding area.

1984: Hargor Resources Inc. performed an electromagnetic and magnetometer survey on their Neville-Potier and Huffman Township property. Two significantly anomalous areas were identified.

1985: Hargor Resources Inc. performed a 2 hole, 800 foot diamond drill program on their Potier township property. Drill holes intersected two zones of iron formation however assays were weak and failed to give encouragement.

1985: Blue Falcon Mines Ltd. Performed airborne magnetometer and electromagnetic VLF over Neville Township and the surrounding area

1990: Blue Falcon Mines Ltd. Performed a magnetic and VLF-EM airborne survey which covered areas from Schist Lake to Clam Lake. Several VLF-EM conductors were found.

2008: Fugro Airborne Surveys, on behalf of Augen Gold Corp, completed an electromagnetic, magnetometer and radiometric geophysical survey over the entire South Swayze Property.

2012: Newcastle Minerals (now GoldON Resources Ltd.) performed a prospecting and sampling program over the Neville-Potier Property

6.0 Geological Setting

6.1 Regional Geology:

The Neville-Potier Property is located within the Superior Province of the Canadian Shield and the south central part of the Abitibi Sub-province. The Neville-Potier Property lies within as well as north of the southern Swayze Greenstone Belt – a northwest trending belt of metamorphosed Archean volcanic, sedimentary and intrusive rock that is bounded on the southwest and northeast by granitoid batholiths (Ayer & Trowell, 2002). This belt is considered to be the western continuation of the mineral rich Abitibi Greenstone Belt.

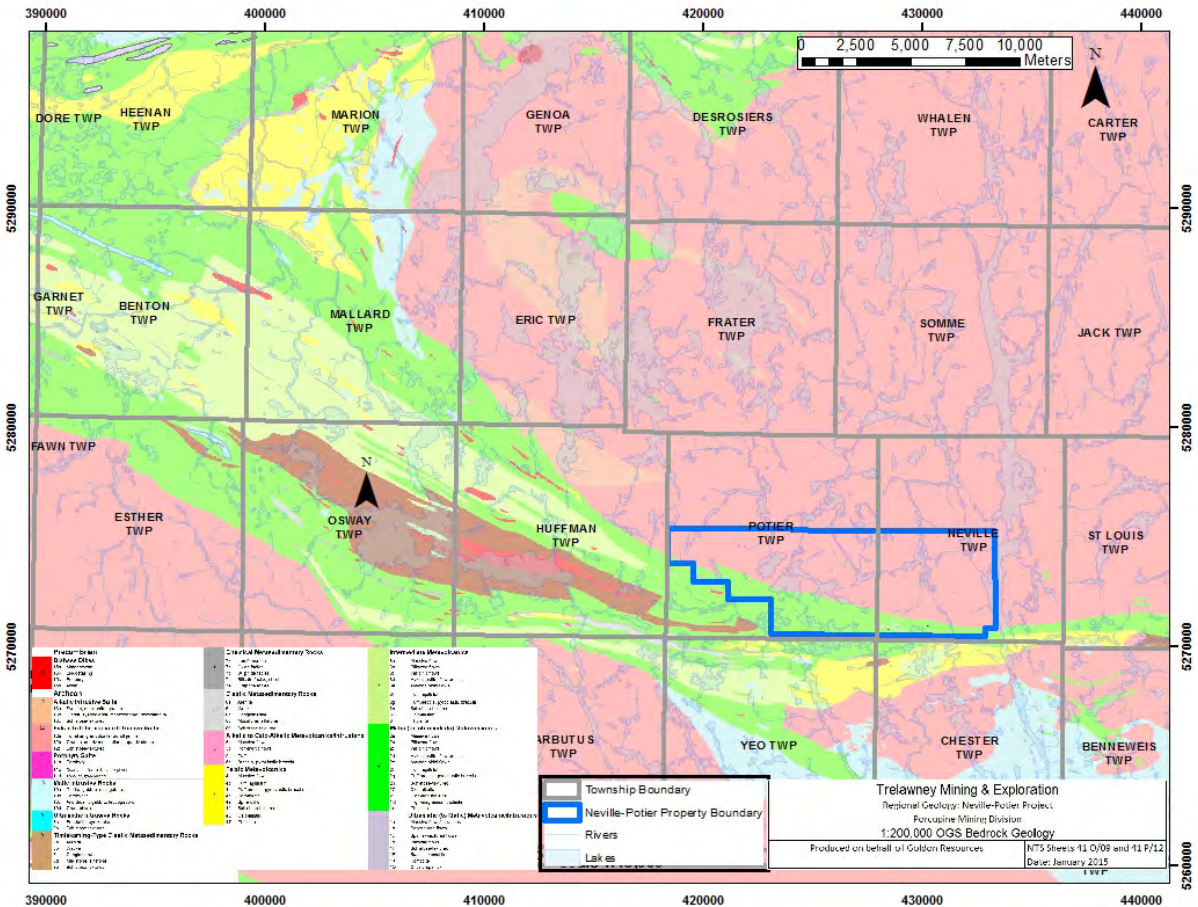
The Swayze area experienced a complex and protracted structural history of polyphase folding, development of multiple foliations, ductile high-strain zones and late brittle faulting. Shearing is common throughout the southern Swayze with foliation, shear planes and primary layering mainly sub-vertical. This portion of the Swayze hosts the Ridout Deformation Zone (RDZ), a major east-west crustal-scale high strain zone. It has been suggested that the Ridout shear zone may be the western extension of the Cadillac-Larder lake deformation zone which has significant geological and economic implications (Von Breemen et al., 2006).

Metamorphism within the southern SGB is largely upper greenschist facies.

The Neville-Potier project lies largely within the lower part of the northern limb of the Swayze Syncline composed of a belt of metavolcanic rocks of mainly sheared tholeiitic basaltic flows of Archean age. Several belts of felsic to intermediate pyroclastics, tuffs and cherts occur concordantly within the mafic metavolcanics.

Regional geology of the Swayze Greenstone Belt and area is depicted in Figure 3 below which is modified from the OGS.

Figure 3: Regional Geology (Modified after OGS)



6.2 Property Geology:

The Neville-Potier Property is underlain to the north by intermediate to felsic intrusives of the Neville Pluton consisting of Tonalites to Quartz Monzonites and underlain to the south primarily by an east-west trending steeply dipping felsic volcanic to mafic volcanoclastic assemblage. The volcanic assemblage makes up the Swayze Greenstone Belt. Late north-northwesterly trending Matachewan aged diabase dykes as well as northeast trending Biscostasing gabbroic dykes intrude the units above.

7.0 2014 Geotechnical Drilling Program

7.1 Geotechnical Drill Program:

The 2014 geotechnical drilling campaign resulted in 21 drill holes within the bounds of the Neville-Poitier Property with a total length of 249.3 meters. As well as the geotechnical drilling, overburden test pits were also dug by excavator. The purpose of the geotechnical program was to investigate and characterize foundation conditions and to install hydrological monitoring wells related to the proposed project infrastructure of the Côté Project. The hydrological monitoring wells were installed for use in hydrogeological assessments, baseline studies and long term monitoring to evaluate the general soil and bedrock conditions.

7.2 Location of Geotechnical Drill Holes and Test Pits:

All geotechnical drill holes and test pits were positioned with a Garmin 78S GPS unit. Figure 4 depicts the location of these geotechnical drill holes and test pit locations.

7.3 Logistics of Drill Trails and Drill Pad Creation:

The Neville-Potier Project is a contiguous claim block consisting of 6000 Hectares in Neville and Potier Townships. Owned 100% by GoldOn Resources Ltd., these claims are positioned within as well as North and South of the contact between the Swayze Greenstone Belt and the Kenogamissi batholith to the North.

Trelawney Mining & Exploration personnel carried out the ground logistical work required for the recent 2014 geotechnical drilling campaign. This included performing the ground work to build the drill trails to the drill sites. Drill trails were prepared by tree cutting and the use of an excavator to move the brush from the trail. The drill pads dimensions on average were 10m X 15m to accommodate the diamond drill and equipment. The excavator was also used to dig pits for sumps to hold water for drill use, and also to dig test pits. A total of 12 test pits were dug into the overburden to assess subsurface soil and groundwater conditions for water realignment.

The geotechnical boreholes were completed with a track mounted CME-850 drill rig supplied and operated by Marathon Drilling Co. Ltd of Greely, Ontario.

Along with the aforementioned the excavator was used for site remediation (sumps filled in, rubble and equipment picked up, etc;) leaving the ground as undisturbed as possible. The remediation efforts were also performed by Trelawney Mining & Exploration personnel. This work made use of a link belt 350 Excavator and excavator operator for 25 man days between the period of July 07, 2014 to October 4th, 2014. The equipment was then de-mobilized out of the work area following completion of the geotechnical program.

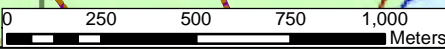
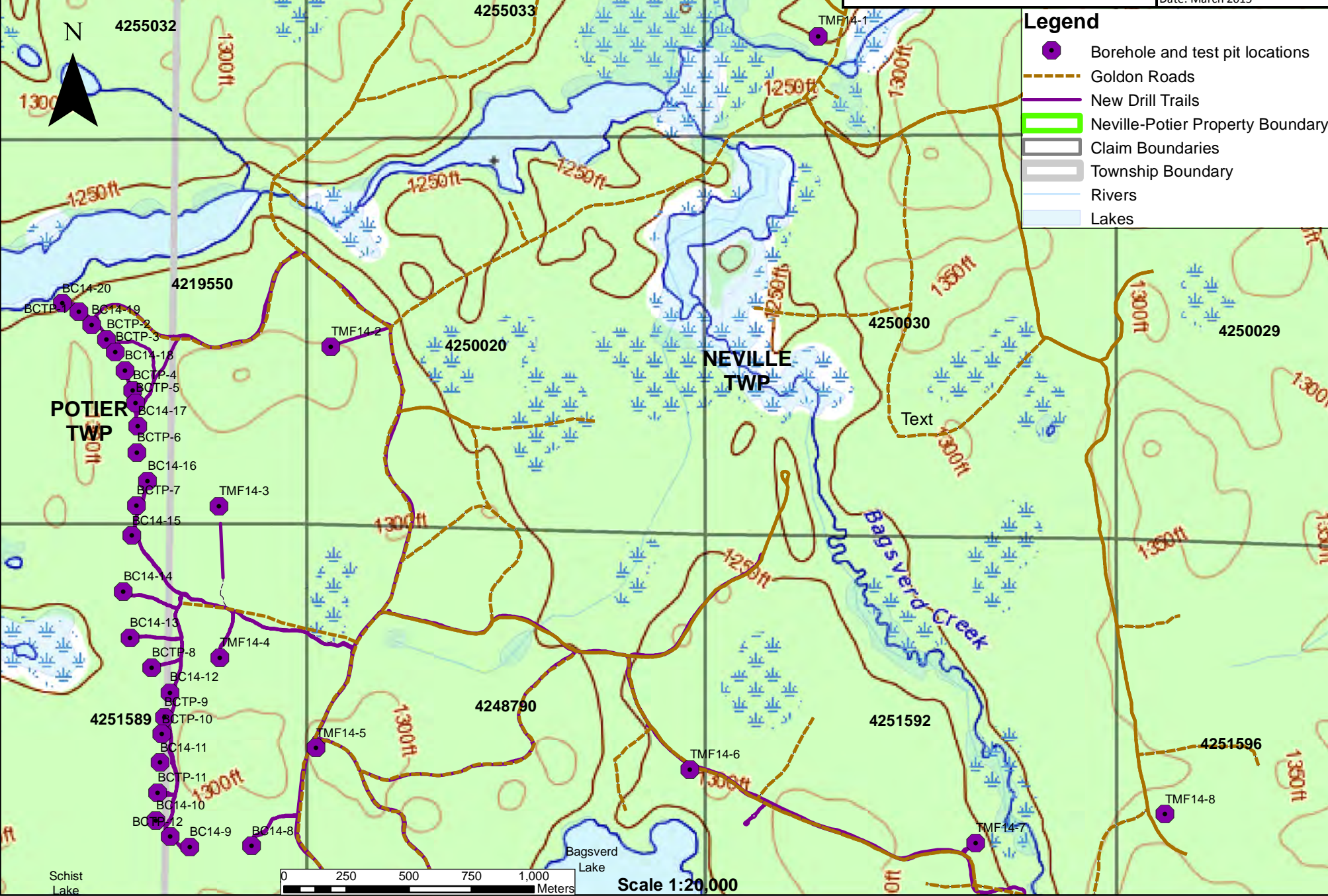
The drill trails were made on 7 claims within the Neville-Potier claim block. These claims are all 16 unit claim blocks with the exception of one 15 unit claim block, 4251596. The claims which experienced

Figure 4: Geotechnical Drill Hole and Test Pit Locations on the Neville-Potier Property

Trelawney Mining & Exploration
 Neville-Potier Project
 Porcupine Mining Division
 1:20,000 Neville-Potier Property Geotechnical DDH location map
 Produced on behalf of Goldon Resources | NTS Sheets 41 O/09 and 41 P/12
 Date: March 2015

Legend

- Borehole and test pit locations
- - - Goldon Roads
- New Drill Trails
- Neville-Potier Property Boundary
- Claim Boundaries
- Township Boundary
- Rivers
- Lakes



Scale 1:20,000

Schist Lake

Bagsverd Lake

Bagsverd Creek

NEVILLE TWP

POTIER TWP

Text

428000

430000

432000

5274000

5272000

5274000

5272000

clearing for drill trails and drill pads were claim numbers 4255034, 4250020, 4219550, 4251589, 4248790, 4251592 and 4251596.

Given that several secondary roads and trails were already in place within the Neville-Potier claim block drilling campaign area, the length of the trails which needed to be made was significantly smaller. In total approximately 4.77 kilometers of drill trail was created for access to the drill sites.

7.4 Trelawney Mining & Exploration Personnel:

The geotechnical drill trails, drill pads and drill site remediation was performed by Cody Bishop of Massey, Ontario and Kevin Perreault of Mattagami First Nation, Ontario.

8.0 Conclusion and Recommendations

The 2014 geotechnical program logistical work achieved its primary objectives which were to extend and create drill trails for access to drilling and test pit sites as well as to build drill pads and remediate drill and test pit sites.

9.0 References:

Siemieniuk, S. 2011 Prospecting and Sampling Program, Neville-Potier Property, Porcupine Mining Division, pp. 1 to 17 (assessment report)

Von Breeman, O., Heather, K.B., and Ayer, J.A., 2006; U-Pb geochronology of the Neoproterozoic Swayze sector of the southern Abitibi greenstone belt; GSC Current Research 2006-F1, 32p.

Ayer, J. A. and Trowell, N.F. 2002. Geological compilation of the Swayze area, Abitibi greenstone belt; Ontario Geological Survey, Preliminary Map P.3511, scale 1:100,000

10.0 Statement of Qualifications:

Jillian Craig, B.Sc, Geology; P.Geo

Tel: (705) 918-3343

Email: jillian_craig@iamgold.com

Address : 10-2 Gribble street, Copper cliff, On, Canada, p0m1n0

I, Jillian Craig, do hereby certify that:

I have been a geologist for IAMGOLD Corporation, formerly Trelawney Mining and Exploration Inc., since July 19th, 2010.

I graduated with a B. Sc. Majoring in Geology from the University of New Brunswick in 2008.

I am responsible in part for the preparation of this assessment report.

I am a registered practicing professional member (P. Geo) of the Association of Professional Geoscientists of Ontario, Member 2471.

I have been tasked with preparing this report for Trelawney Mining & Exploration on behalf of GoldON Resources Ltd. I was not present during the execution of the geotechnical drilling campaign or logistical work that aided the program.

Dated this the fifth day of March, 2015.

Jillian Craig, B.Sc. (Geology), P.Geo

STATEMENT OF QUALIFICATIONS – ALAN SMITH

I, Alan Smith, do hereby certify that:

1. I have been the District Manager – Exploration for Trelawney Mining and Exploration Inc., a wholly-owned subsidiary of IAMGOLD, since February, 2013.
2. I graduated with an Honors Bachelor of Science Degree in Geology from the University of Western Ontario in 1984. I completed an M.Sc. Degree in Geology at the University of Western Ontario in 1987.
3. I am a practicing member in good standing with the Association of Professional Geoscientists of Ontario (Membership Number 0201). I am also a Member of the PDAC, CIM, and OPA.
4. I have worked as a Geologist for more than 26 years since graduation from University.
5. I am responsible for the supervision of this assessment report.
6. I have been involved in the Trelawney Mining and Exploration Inc. Ontario Exploration program since February of 2013.

Dated March 05, 2015

Appendix A: List of Claims of the Neville-Potier Claim Block

Township /Area	Claim Number	Units	Recording Date	Claim Due Date	Status	Work Required	Total Applied	Total Reserve
POTIER	4219547	16	2010-Mar-16	2012-Mar-16	A	\$6,400	\$0	\$0
POTIER	4219548	16	2010-Mar-16	2012-Mar-16	A	\$6,400	\$0	\$0
POTIER	4219549	4	2010-Mar-16	2012-Mar-16	A	\$1,600	\$0	\$0
NEVILLE	4219550	16	2010-Mar-16	2012-Mar-16	A	\$6,400	\$0	\$0
POTIER	4246981	12	2010-Mar-16	2012-Mar-16	A	\$4,800	\$0	\$0
NEVILLE	4248790	16	2010-Mar-16	2012-Mar-16	A	\$6,400	\$0	\$0
NEVILLE	4250020	16	2010-Mar-16	2012-Mar-16	A	\$6,400	\$0	\$0
POTIER	4250021	16	2010-Mar-16	2012-Mar-16	A	\$6,400	\$0	\$0
POTIER	4250022	16	2010-Mar-16	2012-Mar-16	A	\$6,400	\$0	\$0
POTIER	4250023	16	2010-Mar-16	2012-Mar-16	A	\$6,400	\$0	\$0
POTIER	4250024	16	2010-Mar-16	2012-Mar-16	A	\$6,400	\$0	\$0
POTIER	4250025	16	2010-Mar-16	2012-Mar-16	A	\$6,400	\$0	\$0
POTIER	4250026	16	2010-Mar-16	2012-Mar-16	A	\$6,400	\$0	\$0
NEVILLE	4250028	8	2010-Apr-06	2012-Apr-06	A	\$3,200	\$0	\$0
NEVILLE	4250029	16	2010-Mar-16	2012-Mar-16	A	\$6,400	\$0	\$0
NEVILLE	4250030	16	2010-Mar-16	2012-Mar-16	A	\$6,400	\$0	\$0
NEVILLE	4251589	16	2010-Mar-16	2012-Mar-16	A	\$6,400	\$0	\$0
NEVILLE	4251592	16	2010-Mar-16	2012-Mar-16	A	\$6,400	\$0	\$0
NEVILLE	4251596	15	2010-Mar-16	2012-Mar-16	A	\$6,000	\$0	\$0
POTIER	4255027	8	2010-Mar-16	2012-Mar-16	A	\$3,200	\$0	\$0
POTIER	4255030	8	2010-Mar-16	2012-Mar-16	A	\$3,200	\$0	\$0
POTIER	4255031	16	2010-Mar-16	2012-Mar-16	A	\$6,400	\$0	\$0
NEVILLE	4255032	16	2010-Mar-16	2012-Mar-16	A	\$6,400	\$0	\$0
NEVILLE	4255033	16	2010-Mar-16	2012-Mar-16	A	\$6,400	\$0	\$0
NEVILLE	4255034	16	2010-Mar-16	2012-Mar-16	A	\$6,400	\$0	\$0
NEVILLE	4255035	16	2010-Mar-16	2012-Mar-16	A	\$6,400	\$0	\$0