

We are committed to providing [accessible customer service](#).  
If you need accessible formats or communications supports, please [contact us](#).

Nous tenons à améliorer [l'accessibilité des services à la clientèle](#).  
Si vous avez besoin de formats accessibles ou d'aide à la communication, veuillez [nous contacter](#).



**REPORT  
ON  
RE-ESTABLISHMENT OF CLAIM  
BOUNDARIES**

**Prepared For:  
Sandra Grieve  
(Client #139571)**

**Prepared by:  
Michael D. Grieve  
(Client #139562)**

**March 27, 2016**

## TABLE OF CONTENTS

	<b>Page</b>
Introduction	1
Location and Access	1
Summary of Mining Lands	2
Geology	2
Vegetation	3
Re-establishment of Claim Boundaries	3
Conclusion	5
References	6
Appendix A	
Map of claim lines re-established	7
Appendix B	
Signature Page	8

## LIST OF FIGURES

	<b>Page</b>
Fig. 1 Map— <i>Property Location and Access</i>	1
Fig. 2 Map— <i>Contiguity of Claim Group</i>	2
Fig. 3 Table— <i>Details of Work Performed</i>	4

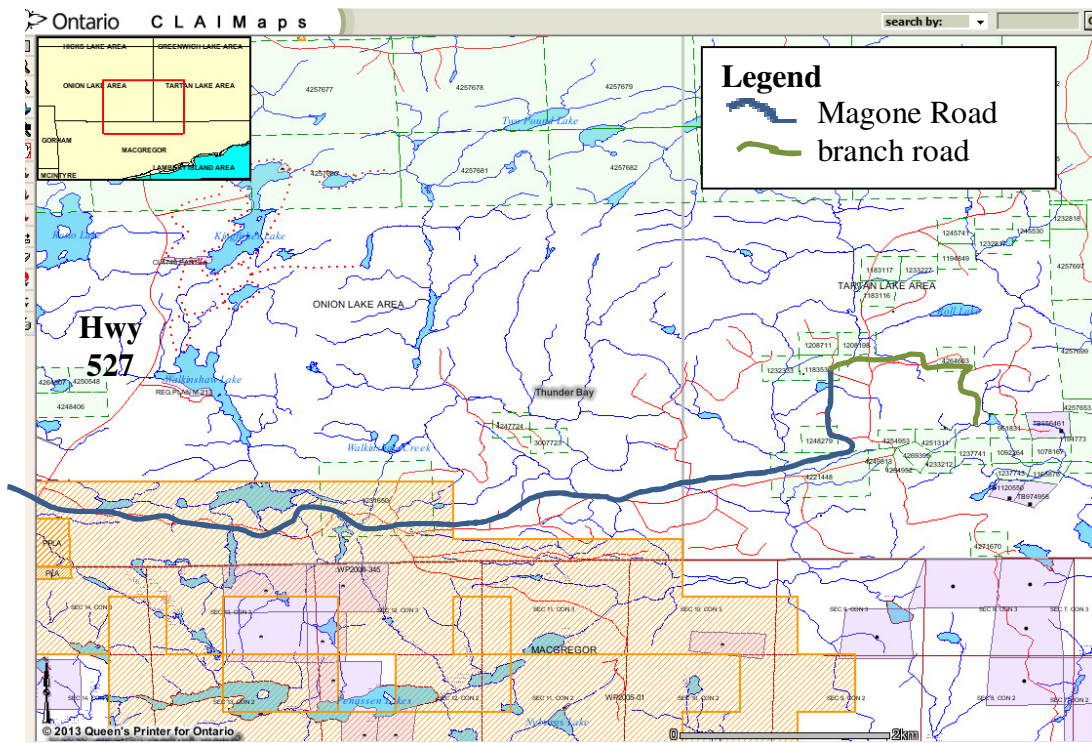
## INTRODUCTION

This report summarizes the claim line re-cutting program performed on mining claims 961831, 1078167, 1092264, 1165876, 1194773, 1237741 and 1237743. All claims are located in the Thunder Bay Mining Division, and are 100% held by Sandra Grieve (client #139571).

Field work was conducted by Michael D. Grieve (client #139562) and Krista J. Nelson between May 22, 2015 and December 6, 2015.

## LOCATION AND ACCESS

Access to the mining claim group (Tartan Lake sheet, G-2706) is gained by traveling north of Thunder Bay, Ontario, via Highway 527, to the Magone Road. Magone Road, a seasonal two-lane dirt forestry road, is followed easterly for approximately 13km, at which point a single-track branch road leads toward the claim group.

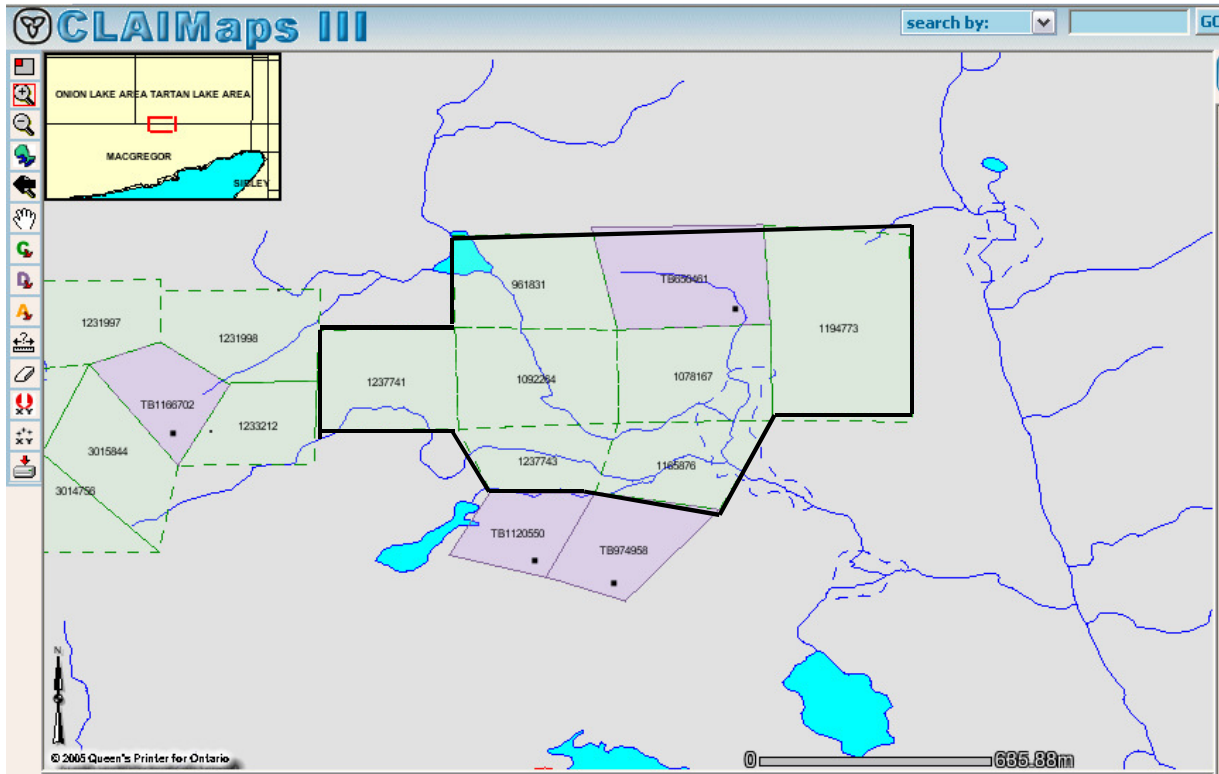


**Figure 1: Property Location and Access.**  
From <http://www.geologyontario.mndmf.gov.on.ca/website/claimaps>



## SUMMARY OF MINING LANDS

The claim group consists of seven contiguous mining claims (961831, 1078167, 1092264, 1165876, 1194773, 1237741 and 1237743) totaling eight units, and one single-unit mining lease (TB656461).



**Figure 2:** Contiguity of claim group. Perimeter marked by bold black line.  
From <http://www.geologyontario.mndmf.gov.on.ca/website/claimaps>

## GEOLOGY

The claim group is located northeast of Thunder Bay within the Tartan Lake map sheet (G2706). This area is in the Superior geological province, probably within the dominantly metasedimentary Quetico sub province near its southern boundary with the dominantly metavolcanic Wawa sub province. Large areas of these sub provinces have been intruded by Archean felsic bodies. OGS Map M2232 (*Ref*) shows the immediate area surrounding the property to be underlain by Archean felsic igneous and metamorphic rocks

The Tartan Lake map sheet has not been mapped in detail but Scott (1990) mapped and described the geology of MacGregor Township just to the south. He reports that the boundary between the Quetico sub province and the Wawa sub province probably crosses the central portion of the MacGregor map area in an East-West direction. The Penassen Lakes Stock is one of two large granitoid intrusions on the

MacGregor township map sheet and is centred on the Penassen Lakes to the WSW of the claim group. Scott reports that “The Penassen Lakes Stock is very coarse grained, generally porphyritic and ranges in composition from granite to quartz monzonite with hornblende syenite phases.”

Overburden on the claim group consists of coarse glacial till with bouldery and gravelly areas hosted in coarse sandy matrix. Amethyst mineralization occurs in silicified, brecciated zones associated with east-west trending faults and contacts within granite.

## VEGETATION

Vegetation in the area is comprised of a mix of poplar, birch and balsam, with lesser white and black spruce. A dense alder undergrowth is present throughout most of the claim group.

Portions of the western half of the claim group were logged by Shuniah Forest Products in the early 1990s. In some cuts, replanted spruce and jack pine have flourished. No thinning has taken place. In other cuts, a dense broadleaf regrowth (alder, poplar, birch) predominate.

## RE-ESTABLISHMENT OF CLAIM BOUNDARIES

The re-establishment (cutting and flagging) of all perimeter and interior claim lines was deemed necessary as the old claim lines were becoming very difficult to trace.

Years ago, balsam stands in the area suffered heavy damage from spruce budworm. Large numbers of trees weakened by the infestation have since died and blown down. The effect on claim line visibility is two-fold: many of these trees carried the earlier generations of blazes that marked claim lines; secondly, the absence of mature timber has allowed a dense tag alder undergrowth to spring up in their place, further obscuring the lines. In other areas, logging operations in the early to mid-1990s had obliterated portions of the original claim lines. Regeneration, both natural and on the part of the logging contractors, created very dense new growth that made it difficult in places to even walk, let alone see claim lines.

Based on georeferenced claim post locations (report by this author was approved by MNDM on March 14, 2014), the total length of all boundary lines comprising the mining claims and lease is 9699m. The 400m claim line joining the #1 and #4 posts of lease TB656461 was not addressed in this program, as it is not common to a mining claim. Of the remaining distance, 410m of claim lines pass over water, leaving a total length to be re-established of **8889m**.

Re-establishment of claim lines was performed by thoroughly cutting all underbrush and blow-down off the route, and liberally blazing standing trees. Where claim lines intersected water, flagging was hung to make the line location readily visible if approached from the opposite shore.

Figure 3 (next page) lists the dates on which work was performed, and details of the line re-establishment on those days.

DATE	WORKER	DISTANCE RE-CUT	DETAILS OF WORK PERFORMED
May 22, 2015	M. Grieve	840m	Travelled to and from Thunder Bay. Re-cut from post #4-1194773 east to post #1-1194773, then south to LP "400m south of post #1-1194773".
May 23, 2015	M. Grieve	1178m  less 140m for water	Travelled to and from Thunder Bay. Re-cut from post #1-1165876 (common with #3-1194773 and post #2-1078167) west to post #4-1165876 (common with post #3-1078167, post #2-1092264 and post #1-1237743) then from post #3-1165876 east to post #2-1165876, then north to post #1-1165876.
June 11, 2015	M. Grieve	1569m  less 150m for water	Travelled to and from Thunder Bay. Re-cut from LP "400m south of post #1-1194773" south to post #2-1194773, then west to common post #3-1194773 (common with post #2-1078167 and post #1-1165876), then north to post #4-1194773.
July 23, 2015	M. Grieve K. Nelson	2073m  less 70m for water	Travelled to and from Thunder Bay. Re-cut perimeter of claim 1237741, then line from post #2-1237741 (common with post #3-1092264 and post #4-1237743) south to post #3-1237743.
Nov. 30, 2015	M. Grieve K. Nelson	2029m  less 50m for water	Travelled to and from Thunder Bay. Re-cut perimeter of claim 961831, then line from post #2-961831 (common with post #1-1092264 and post #4-1078167) east to post #1-1078167.
Dec. 6, 2015	M. Grieve K. Nelson	1610m	Travelled to and from Thunder Bay. Re-cut from post #1-1092264 (common with post #2-961831 and post #4-1078167) south to post #2-1092264 (common with post #3-1078167, post #4-1165876 and post #1-1237741) then west to post #3-1092264 (common with post #4-1237743 and post #2-1237741). Walked to post #3-1237743 and cut east to post #2-1237743 (common with post #3-1165876), then cut north to post #1-1237743 (common with post #2-1092264, post #3-1078167 and post #4-1165876).
March 27, 2016		n/a	Preparation of report.

**9299m total length,  
-410m of water  
= 8889m cut**

**23 lengths**

*Figure 3: Details of work performed.*

## **CONCLUSION**

All claim lines comprising the claim group are now clearly distinguished. The re-establishment of the claim lines will make the location of future work on the property easier, as well as aid others who may wish to accurately tie claims on to the perimeter of the group.

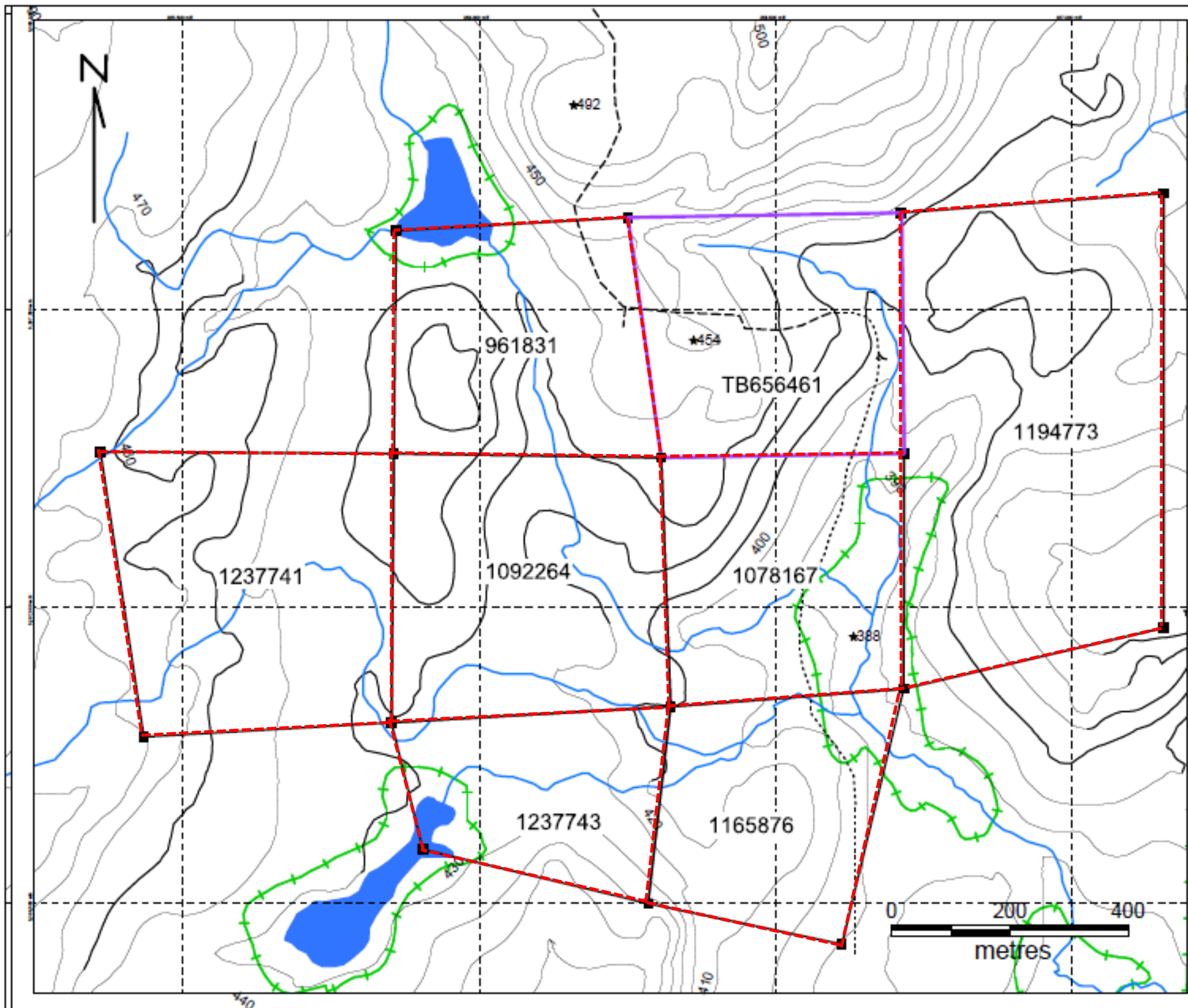


## REFERENCES

- “Assessment Work: Re-cutting Claim Boundary Lines”. MNDM policy, March 25, 2011.  
[http://www.mndm.gov.on.ca/mines/lands/policies/unpatented\\_mining\\_claims/uc703-13\\_e.html](http://www.mndm.gov.on.ca/mines/lands/policies/unpatented_mining_claims/uc703-13_e.html)
- Grieve, Michael D. “Georeferencing Report”. Assessment work report for georeferencing performed on the claim group, February 10, 2014.
- <http://www.geologyontario.mndmf.gov.on.ca/website/claimaps>.

## APPENDIX A

**APPENDIX A  
CLAIM LINES RE-ESTABLISHED**



**Mining Lands**

- Corner Post
- ▭ Mining Lease
- ▭ Mining Claim

**Water**

- Beaver Pond
- Stream

**Elevation**

- Contour Interval (m)
- ★ Spot Elevation (m)
- Tree Line

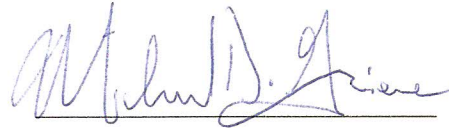
--- Claim lines re-established in 2015

<b>GRIEVE CLAIM GROUP</b>	
March 2016	<b>Georeferenced Post Locations</b> With re-established claim lines
Author: M. Grievé	
Office:	
Drawing:	
Scale: 1: 7500	Projection: UTM Zone 18 (NAD 83)

## **APPENDIX B**

**APPENDIX B**  
**SIGNATURE PAGE**

This report was prepared by:



Michael D. Grieve

Michael D. Grieve,  
licence #E33314, client #139562  
59 Peter Street  
Thunder Bay, ON  
P7A 5H4  
(807) 344-1446

Date:

March 27, 2016