

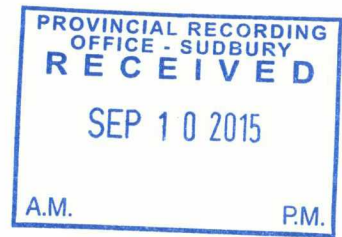
2-56229

**Sampling and Prospecting Report**

**Queen Alexandria Gold Property**

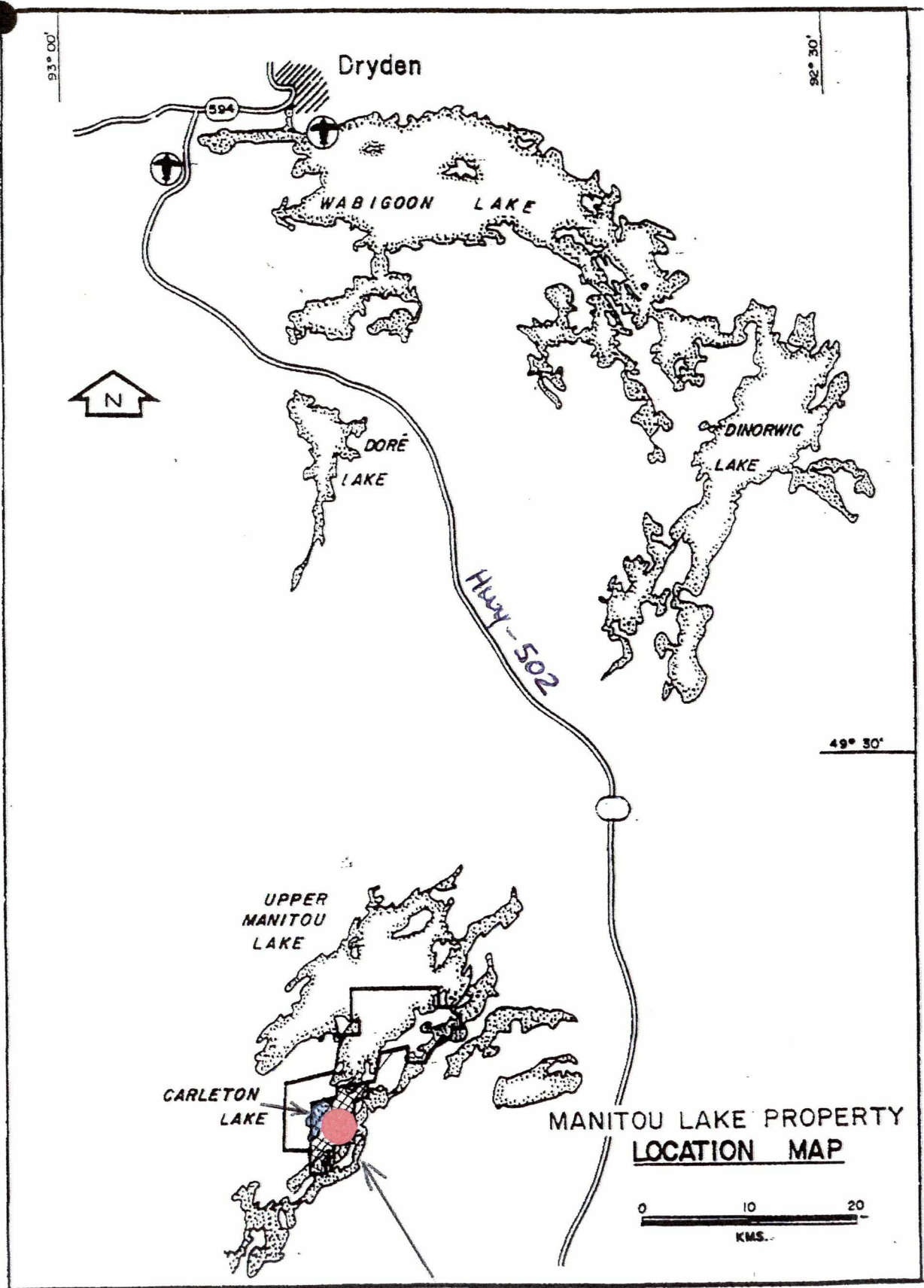
Northwest Ontario, Kenora Mining Division

Submitted By David R Healey  
September 2015



## Table Of Contents

Property Location Map	Fig-1
Property-Summary	Page-1
-Access and Ownership	
-Conclusions	
Mining Claim Access and Gold Zones	Fig-2
Queen Alexandria and Open-Cut map	Fig-3
with sample locations	
Daily Log 2014	Page-2
Personnel	Page-3
Appendix 1	rock sample descriptions and assays
Appendix 2	assay certificates



Queen Alexandra GOLD Property



# Queen Alexandria Gold Property

## Summary

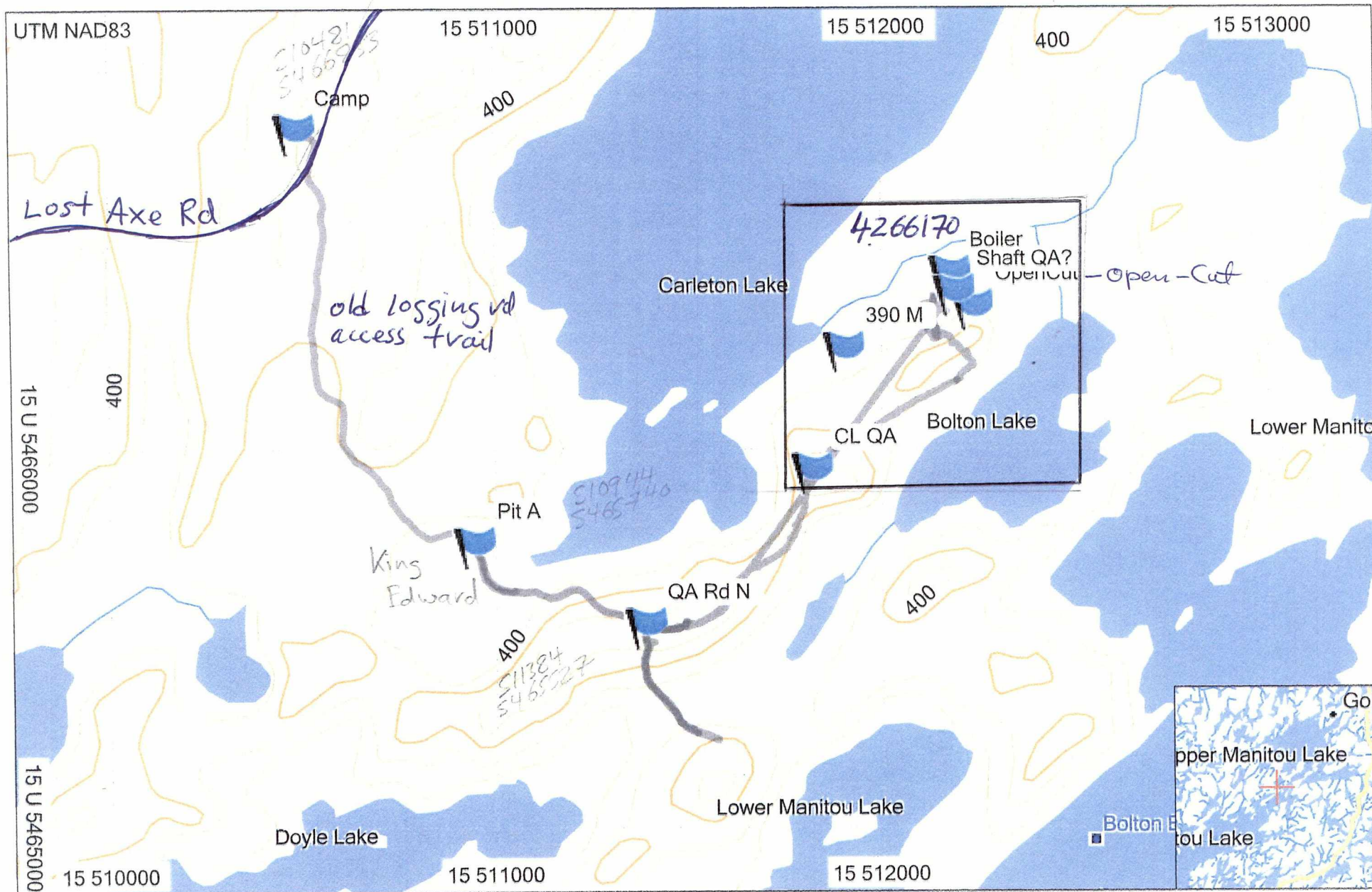
Last fall 3 days were spent (24,25,27 September 2014) locating, prospecting and sampling the Queen Alexander Shaft and the Open Cut showing . A total of 9 samples (Fig-3) were taken, 4 from the shaft muck and 5 from the Open Cut showing. Results were very encouraging ranging from 7.2 gpt Au to 340.8 gpt Au from the Queen Alexandria Shaft muck and 0.47 gpt Au to 5.05 gpt Au from the Open Cut showing. This confirmed high grade samples taken by previous workers as well as the OGS.

## Access & Ownership

The Queen Alexandria Gold Property (Fig-2) consists of one claim 4266170 totalling 4 units in the Lower Manitou Lake Area. The property is 47 kilometers south of the town of Dryden (Fig-1) and borders on the east side of Carlton Lake, and located in the Kenora Mining Division in northwest Ontario. The property is 100% owned and in the name of David R Healey. Access from the town of Dryden is via HWY-502 where you travel 114 kilometers south until you come to the Cedar Narrows road and travel 54 kilometers in a easterly direction to the East Pennasi road. Travel the East Pennasi Road for 28.4 kilometers until you come to the Lost Axe Road which you will travel for 18.6 kms then park your vehicle and walk in a old logging road for 2 kilometers which will take you to claim 4266170 (Fig-2)

## Conclusions

Sampling and prospecting on the Queen Alexandria Gold Property returned very encouraging gold assays and confirmed high grade samples taken by previous workers and the OGS. Exposure around the Shaft and Open-Cut is poor due to thick regrowth and numerous dead trees. The two showings (Fig-3) are hosted by medium grained mafic volcanic flows. Shearing at the Shaft is strikes 75' Az, the shear zone consists of a chlorite-carbonate schist with a quartz vein 10-15cm based on the size of quartz in the muck. The Open-Cut has a strike of 30' Az, the shear zone consists of chlorite-carbonate schist with a pinch and swell quartz vein that averages 40 cm and can be traced for 20 meters. The claim should be prospected and mapped but more importantly an excavator could easily be walked in to strip off these zones as well as the projected location where these two veins may come together (Fig-3). This will provide valuable structural information to drill these two veins.



Topo Canada v2

CanMap®, DMTI Spatial and the DMTI Spatial logo are trademarks of DMTI Spatial Inc., Markham, Ontario  
 © Garmin Ltd. or its subsidiaries 1995-2004  
 ©2003 DMTI Spatial Inc.

Internal Storage

*Mining Claim Access and Gold Zones*

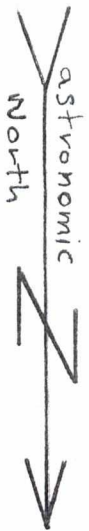
0 m 250 m 500 m 750 m 1000 m

GARMIN

MN TN  
 -0.4°  
 01/01/2010

FIG-2





# Legend

- 1 medium grained mafic volcanic
- shaft
- pit
- open-cut
- overburden trench
- outcrop
- positive topo feature
- ▲ -2575701 sample location and number
- W wet, bog
- SPR spruce
- CE cedar

Fig-3

shear zone  
strike and dip  
of shear zone

512200 E

NAD 83  
5466400 N

Queen  
Alexandria  
shaft

cedar bog  
Boiler

SPR, CE

2575701  
702  
703  
704

dead spr  
thick alder

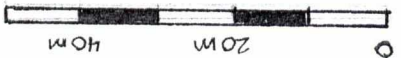
2575705  
706  
707  
708  
Open-cut

thick alder

thick alders

projected intersection  
of shear zones  
and quartz veins

overburden trench



Claim 4266170

Queen Alexandra Property

Prospecting and Sampling

Kenora Mining Division

Sept 2015  
David R Healey

1:1000  
1cm = 10m

## Queen Alexandria Daily Log 2014

22 September 2014 sunny, warm +25C

-leave Brandon at 6.15 am, stop at Kenora along the way and go to Ministry and copy a couple of geology maps for the Queen Alexandria Property, continue on to Dryden and stay for the night.

23 September 2014 sunny, warm +25C

-grab supplies in Dryden in the morning, headed out to property at 10.30 am

-arrived at property at 3.00 am and setup camp

- 110 kms down Hwy-502, 101 kms down a series of gravel roads, Cedar Narrows Road (54 kms), Penassi East Road (28.4 kms), and Lost Axe Road (18.6 kms)

24 September 2014 overcast drizzle and rain

-found old logging roads and made my way into the property and started looking for the Queen Alexandria Shaft and Open Cut, used coordinates from assessment and no luck. Walked over mafic flows all day fine grain and coarse grained mafic volcanics.

-soaked by 3.00 pm, maps getting wet and I am soaked headed back to camp to dry off and eat

- look at maps I think I am too far to the west, will look further to the east at the edge of the bog tomorrow

25 September 2014 overcast, cloudy

-No rain but bush is soaked, arrived at target area and found Queen Alexandria Shaft and Open Cut within a half hour, workings are really overgrown. Found old boiler (1892) and engine at edge of bog knew shaft was nearby and found it in 5 minutes up slope.

-found shaft which was really overgrown as well as the muck pile, you could see the shaft was still timbered

-not much quartz was exposed in muck you had to dig for it, hard to get a shearing trend roughly 075'

-quartz generally glassy-white with tr-0.50% py, malachite, Zn host rock is fine grained mafic volcanic

-took 4 samples (2575701-04) of muck (quartz) with rep samples

-back to camp and pack up and back to Dryden for meeting in Kenora tomorrow

26 September 2014 sunny & warm

-off to Kenora early in the morning for a meeting

-back to Dryden in the evening

27 September 2014 sunny & hot

-leave Dryden at 5.30 am and on the property in 3.5 hours

- went back to shaft for one more look around and then over to Open Cut to sample

-really overgrown like the Queen Alexandria Shaft, rough trend of shear 030', host fine grained mafic volcanics

- took 5 samples (2575705-09) of muck (quartz) similar to shaft glassy-white quartz tr-0.50% py, po

-finished sampling and walked back out to truck and arrive in Dryden at 7.00 pm

28 September 2014 overcast, drizzle +8C

-start small job for Manitou Gold

## Personnel

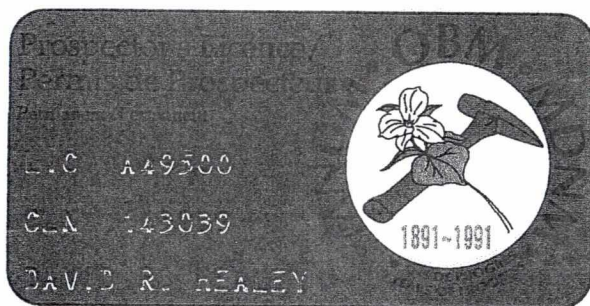
**David R Healey (prospector)**

*David R Healey*



Ministry of  
Northern Development  
and Mines

Ministère du  
Développement du Nord  
et des Mines





## **Appendix 1**

### **Rock Sample Descriptions**

Queen Alexandria Property

Sample#	Easting	Northing	Sulphides	Quartz	Other	Area	Decription	AU gpt	
2575701	512196	5466408	tr-2% py	99%	tr-mal	Queen Alexandria Shaft	muck, white sugary qtz, minor fe, tr malachite	> 10.0	140.9
2575702	512196	5466412	<0.50% py	99%		Queen Alexandria Shaft	muck, glassy white qtz, minor fe	7.215	
2575703	512198	5466404	1-2% py	99%		Queen Alexandria Shaft	muck, white sugary rusty qtz	>10.0	340.8
2575704	512196	5466411	tr-2% py	99%		Queen Alexandria Shaft	muck, white sugary qtz, minor fe	>10.0	89.9
2575705	512242	5466364	tr py	99%		Open-Cut	muck, white-grey qtz, py diss and bleb	1.026	
2575706	512244	5466364	<0.50% py	99%		Open-Cut	muck, white grey qtz, burgandy stain on py	0.471	
2575707	512245	5466364	<0.50% py	99%		Open-Cut	muck, sugary white qtz, py along fract	5.049	
2575708	512247	5466364	<1% py, po	99%		Open-Cut	muck, white to rose colour qtz, burgandy stain on py	0.91	
2575709	512234	5466358	tr py	99%		Pit 4m west of Open-Cut	muck, white-grey sugary qtz, minor fe	0.852	
2575704							Pulp Duplicates Rock	>10.0	89.3
2575704							Pulp Duplicates Rep	>10.0	91.6

2056229

PROVINCIAL RECORDING  
OFFICE - SUDBURY  
RECEIVED

SEP 10 2015

P.M.

A.M.

