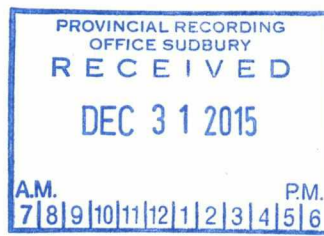


We are committed to providing [accessible customer service](#).
If you need accessible formats or communications supports, please [contact us](#).

Nous tenons à améliorer [l'accessibilité des services à la clientèle](#).
Si vous avez besoin de formats accessibles ou d'aide à la communication, veuillez [nous contacter](#).



4/19

PROPERTY VISIT AND SAMPLING REPORT

On The

DUPLICATE

TREELINED LAKE GRAPHITE PROPERTY

TREELINED LAKE AREA – PLAN G-2651

KENORA MINING DIVISION, ONTARIO

For

2-56512

PERRY L. HEATHERINGTON

Prepared By

ALASDAIR J. M. MOWAT

Technical Mining Engineer

December 22, 2015

TABLE OF CONTENTS

	PAGE
1/. Introduction and Property Summary	3
2/. Property Visit and Rock Sampling	4
3/. Analytical Procedure and Results	4
4/. Conclusions	5

LIST OF TABLES

Table 1: Heatherington Claim Holdings

Table 2: Prospectors' Sampling Notes

Table 3: Graphite Analytical Method

Table 4: Graphite/Carbon Assay Results

LIST OF FIGURES

Figure 1: Treelined Graphite Property Location Map

Figure 2: Property Claim Map

Figure 3: Treelined Graphite Property

Figure 4: Prospecting and Sampling Area

Figure 5: General Location of Sample Sites

1/. INTRODUCTION AND PROPERTY SUMMARY:

The Treelined Lake Graphite Property is located in the Treelined Lake Area (G-2651), Kenora Mining Division of Northwestern Ontario (Fig. 1). The property is 100% owned by Perry L. Heatherington which is comprised of a contiguous block of 6 claims or 59 units or 944 ha (Table 1 and Fig. 1). The property was acquired for its economic potential to host flake graphite.

The property is located approximately 60 kilometres north of the City of Kenora at 50.30 degrees N latitude by 94.46 degrees W longitude.

The Treelined Graphite Property is hosted within a suite of Archean age high-grade metamorphic Metasedimentary rocks (dominantly schists and gneisses) enclosed in Granitoid rocks within the English River Subprovince. The Property lies close to a major crustal boundary between the Archean English River Gneiss Belt to the north and the Archean Winnipeg River Pluton to the south. In subject property, the Separation Lake Greenstone Belt lies along the southern border of the English River Subprovince. The Treelined Graphite Property is located a short distance north of the Separation Lake Greenstone Belt.

The Treelined Graphite Property of Perry L. Heatherington hosts a previously identified zone of graphite-bearing paragneisses (altered quartzites to arkose to greywacke sedimentary rocks). The flake graphite in the paragneisses is considered to represent the re-crystallization at the temperatures and pressures of amphibolites to granulite grade metamorphism of pre-existing organic carbon in the original sedimentary rocks.

Previous work by the Ontario Geological Survey (OGS) and claim holder has shown that the graphite-bearing units trend +/- N 60 degrees E, dipping steeply to the southeast to vertical, exposing a zone in the order of 75 metres to 100 metres wide by trenching and sampling. .

Previous exploration work by past owner Mega Graphite Inc in the Fall of 2012 consisted of prospecting; mechanical and manual stripping/washing; geological mapping, and rock sampling (grab and diamond saw channeling). The graphite/carbon assays returned values up to 11% carbon.

The Treelined Graphite Zone has been trenched over a strike length of about 600 metres at +/- 100 metre spaced cross-cutting trenches. The zone appears to be open along strike in both southwest to northeast directions. Combining the known strike length of 600 metres with the 75 – 100 metre widths would suggest the presence of a graphite deposit with a significant tonnage potential that, at least in part, could be amenable to open pit mining.

Although, it is quite unbelievable that the zone has not been drill tested, two preliminary mineral dressing studies have been conducted to determine if a suitable graphite concentrate could be produced. Both scoping studies were positive.

2/. PROPERTY VISIT AND ROCK SAMPLING: (Fig. 3, 4 and 5)

On September 21st and 22nd, 2015, two prospectors were instructed to inspect the Treelined access trail off the English River Road and to collect rock samples from the graphite zone.

Day 1 – September 21:

The crew drove north from the City of Kenora up the English River Road to the Treelined trail which gives access to the graphite zone. The departure GPS co-ordinate is 399804m E by 5572286m N (Zone 15, NAD 83). The trail was partially overgrown with some blow-down; however, they were able to get as far with the 4x4 truck up to station 396682m E by 5573242m N. The final distance to the site was covered by hiking.

The remainder of the day was spent taking four graphite samples numbered C141704 to C141707. Due to day light they returned to the vehicle and proceeded back to Kenora.

Day 2 – September 22:

The party returned to the discovery site and removed an additional six graphite samples numbered C141708 to C141714. They returned to Kenora leaving a total of 11 rock samples plus a large show piece with the author of this report.

In both cases, the prospectors noted the GPS co-ordinates of sample locations with a brief description of the site.

3/. ANALYTICAL PROCEDURE AND RESULTS: (Tables 3 and 4)

The 11 samples were re-packed and tagged leaving a corresponding representative office sample. The two boxed samples were shipped by Greyhound BPX from Kenora to ALS Minerals, Thunder Bay, Ontario for Graphite/carbon analytical evaluation – Work order TB15189090 > Method: C-IR18.

The field assay results, as noted (Table 4), ran from a low of 0.17% carbon (sample # 9 – C141712) to a high of 9.68% (sample # 11 – C1417140).

4/. CONCLUSIONS:

It is considered that the Treelined Graphite Property is of merit having the potential to host a carbon deposit of economic significance. To validate this observation, the following programs are recommended:

1/. Core drilling has to be done starting with a minimum of 1,500m NQ core including core assaying. As this drill program is being carried out, the exploration activities of prospecting and geological mapping which includes sampling and magnetometer and electromagnetic geophysical surveys can be conducted simultaneously around the discovery site and over the rest of the current property holdings. The estimated cost to of program is \$500,000.

Dated: December 22nd, 2015

Dated At: Kenora, Ontario

Prepared by: Alasdair J.M. Mowat

Technical Mining Engineer

LIST OF TABLES & FIGURES

TABLE 1 : Heatherington Claim Holdings


 Ministry of Northern
Development and Mines

- [Home](#)
- [Mines and Minerals](#)
- [Northern Development](#)
- [News](#)
- [Site Map](#)
- [Contact Us](#)

Mining Claim Client Reports

[Main Menu](#) | [Back](#) |

KENORA Mining Division - 143125 - HEATHERINGTON, PERRY

Township/Area	Claim Number	Recording Date	Claim Due Date	Status	Percent Option	Work Required	Total Applied	Total Reserve	Claim Bank
TREELINED LAKE AREA	4224468	2010-Mar-21	2015-Dec-29	A	100 %	\$ 1,172	\$ 8,428	\$ 0	\$ 0
TREELINED LAKE AREA	4267853	2015-Nov-20	2017-Nov-20	A	100 %	\$ 2,800	\$ 0	\$ 0	\$ 0
TREELINED LAKE AREA	4267854	2015-Nov-20	2017-Nov-20	A	100 %	\$ 3,200	\$ 0	\$ 0	\$ 0
TREELINED LAKE AREA	4267855	2015-Nov-20	2017-Nov-20	A	100 %	\$ 6,400	\$ 0	\$ 0	\$ 0
TREELINED LAKE AREA	4279302	2015-Nov-20	2017-Nov-20	A	100 %	\$ 5,600	\$ 0	\$ 0	\$ 0
TREELINED LAKE AREA	4279303	2015-Nov-20	2017-Nov-20	A	100 %	\$ 3,200	\$ 0	\$ 0	\$ 0

- [Home](#)
- [Mines and Minerals](#)
- [Northern Development](#)
- [Ring of Fire Secretariat](#)
- [News](#)
- [Site Map](#)
- [Contact Us](#)



This site is maintained by the Government of Ontario, Canada.

- [Accessibility](#)

TABLE 2: Prospectors' Sampling Notes
 "HEATHERINGTON TREELIND PROPERTY"

11/19

SAMPLING NOTES

Mining Claim No.
 4224468

<u>SAMPLE No.</u>	<u>ZONE 15, NAD83</u> <u>Easting</u>	<u>Northing</u>	<u>DESCRIPTION</u>
① C141704 - (C-5.39%)	396094 ^m	- 5572883 ^m	- N. part of trench near contact - sediments - gneiss, graph, S
② C141705 - (C-1.18%)	396064 ^m	- 5572778 ^m	- Western trench - sediments - gneiss - Graphite, sulphides
③ C141706 - (C-1.73%)	396064 ^m	- 5572780 ^m	- sediments - gneiss - Graphite, sulphides
④ C141707 - (C-0.28%)	396043 ^m	- 5572825 ^m	- N. part of western trench - sediments - gneiss, graph, S
⑤ C141708 - (C-2.60%)	396080 ^m	- 5572814 ^m	- Sediments - gneiss - Graphite, sulphides
⑥ C141709 - (C-1.13%)	396102 ^m	- 5572868 ^m	- Sediments - gneiss - Graphite, sulphides
⑦ C141710 - (C-7.95%)	396132 ^m	- 5572846 ^m	- Sediments - gneiss - Graphite, sulphides
⑧ C141711 - (C-7.94%)	396175 ^m	- 5572917 ^m	- Sediments - gneiss - Graphite, sulphides
⑨ C141712 - (C-0.17%)	396156 ^m	- 5572922 ^m	- Sediments - gneiss - Graphite, sulphides

TABLE 2 : Continued

⑩ C141713 - (C-2.91%)	396136 ^m	- 5572921 ^m	- Sediments - gneiss - Graphite, sulphides
⑪ C141714 - (C-9.72%)	396189 ^m	- 5572931 ^m	- Sediments - gneiss - Graphite, sulphides

 11 Samples

Date of Survey:
Sept. 21 & 22, 2015

Prepared By: A.J. Mowat

TABLE 3: Graphite Analytical Method

METHOD INFO

ANALYTES

ROUTINE QC STANDARDS

Workorders

Reports

Search

QC Wizard

CoreViewer

Preferences

News

Ter

Home > [Workorder TB15189090](#) > Method**Method: C-IR18**

Method Code: C-IR18
Digestion Code: [WEI-CIR18](#)
Section: SPEC-LECO
Department: Specialty
Sec. Extraction:
Rack Size:

Method: Graphitic carbon by LECO
Weight: 0.1
Min. Weight: 0.05
Max. Weight: 0.15

Description:

Graphitic C is determined by digesting sample in 50% HCl to evolve carbonate as CO₂. Residue is filtered, washed, dried and then roasted at 425C. The roasted residue is analysed for carbon by high temperature furnace with infra red detection.

Downloadable Documents

[C-IR18 \(Meth Desc\)](#)

TABLE 4 : Graphite / Carbon Assay Results

	Method	Sample Preparation Type	Sample Preparation PUL-31	Sample Preparation SPL-21	Sample Preparation CRU-31	Sample Preparation LOG-22	TB15189090	
							WEI-21	C-IR18
	Analyte						Recvd Wt.	C Graphitic
							kg	%
							0.02	0.02
001	C141704	Rock	✓	✓	✓	✓	1.93	5.39
002	C141705	Rock	✓	✓	✓	✓	4.40	1.18
003	C141706	Rock	✓	✓	✓	✓	0.70	1.73
004	C141707	Rock	✓	✓	✓	✓	1.35	0.28
005	C141708	Rock	✓	✓	✓	✓	1.21	2.60
006	C141709	Rock	✓	✓	✓	✓	0.63	1.13
007	C141710	Rock	✓	✓	✓	✓	0.61	7.95
008	C141711	Rock	✓	✓	✓	✓	1.41	7.94
009	C141712	Rock	✓	✓	✓	✓	1.19	0.17
010	C141713	Rock	✓	✓	✓	✓	4.22	2.91
011	C141714	Rock	✓	✓	✓	✓	3.70	9.72
010	Ch:C141713_15189090	Rock						2.89
011	Ch:C141714_15189090	Rock						9.68
001	Blank01_15189090							<0.02
001	Blank02_15189090							<0.02
002	St01:GGC-02_15189090							27.10
002	St02:GGC-02_15189090							27.20
009	St03:NCSDC60120_15189090							10.00
010	St04:NCSDC60120_15189090							10.20

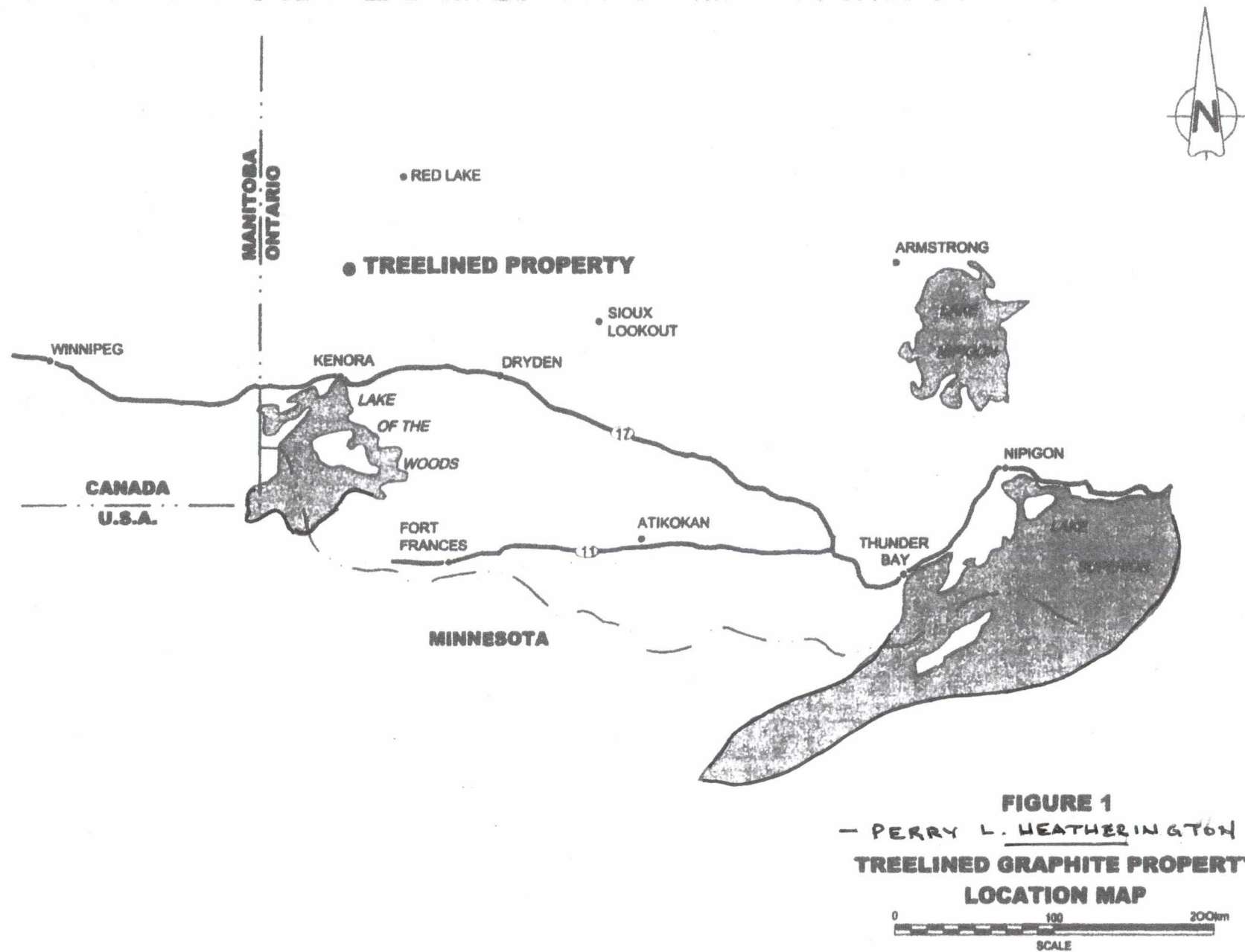
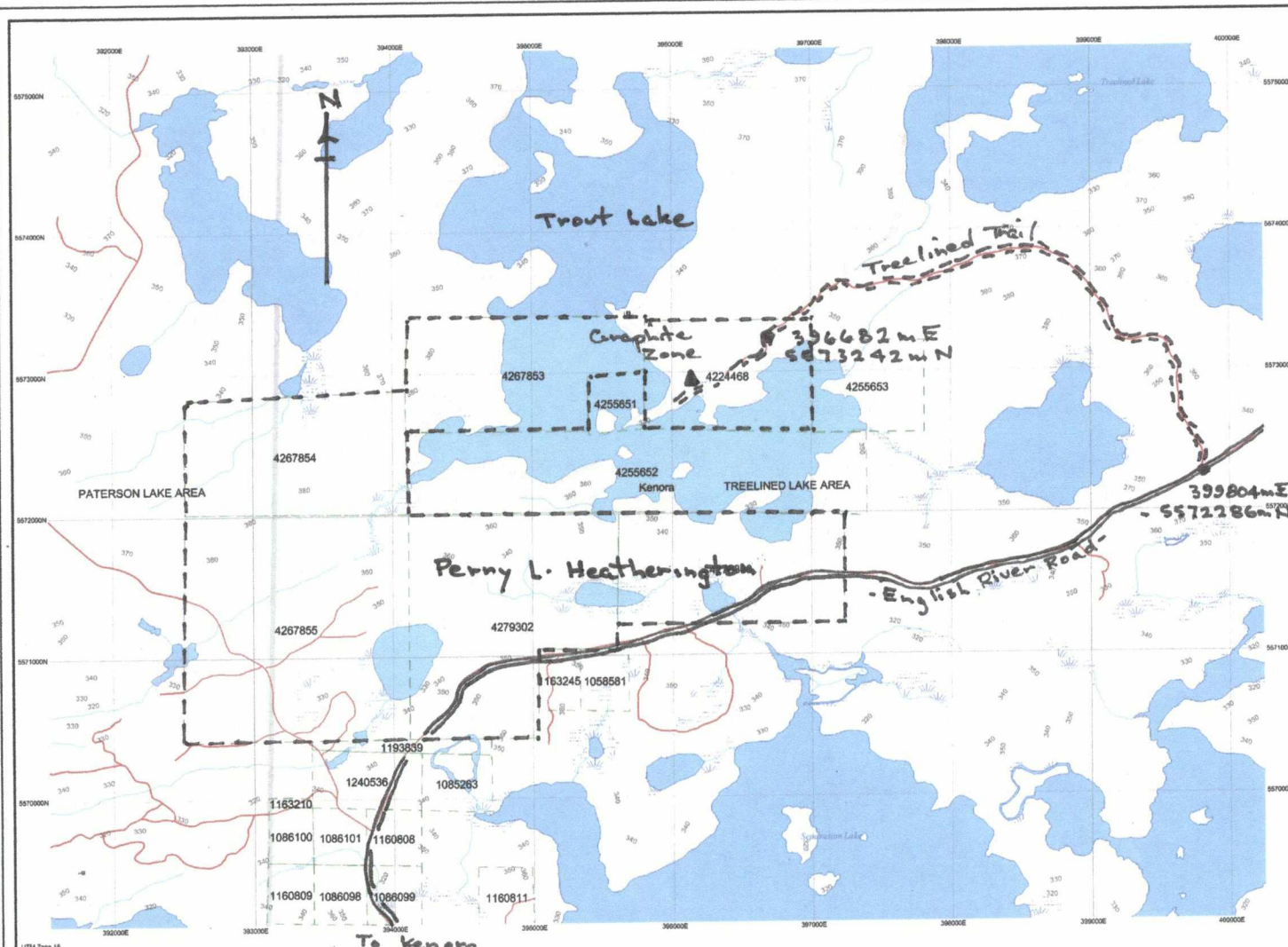


Figure 2: Property Claim Map



Those wishing to stake mining claims should consult with the Provincial Mining Recorders' Office of the Ministry of Northern Development and Mines for additional information on the status of the lands shown herein. This map is not intended for navigational, survey, or land title determination purposes as the information shown on this map is compiled from various sources. Completeness and accuracy are not guaranteed. Additional information may also be obtained through the local Land Titles or Registry Office, or the Ministry of Natural Resources.

The information shown is derived from digital data available in the Provincial Mining Records' Office at the time of downloading from the Ministry of Northern Development and Mines web site.

General Information and Limitations

Contact Information:
Provincial Mining Records' Office
Wildcat Green Miller Centre 633 Ramsey Lake Road
Sudbury ON P3E 6B5
Home Page: www.mdmn.gov.on.ca/10/10MINING/ISLANDS/minmpps.htm

Toll Free:
Tel: 1 (888) 415-8
Fax: 1 (877) 670-

Toll Free Map Datum: NAD 83
Tel: 1 (888) 415-8845 ext 574 Projection: UTM (6 degree)
Fax: 1 (877) 670-1444 Topographic Data Source: Land Information Ontario
 Mining Land Tenure Source: Provincial Mining Records' Office

This map may not show unregistered land tenure and interests in land including certain patents, leases, easements, right of ways, flooding rights, licences, or other forms of disposition of rights and interest from the Crown. Also certain land tenure and land uses that restrict or prohibit free entry to stake mining claims may not be illustrated.



MINISTRY OF NORTHERN
DEVELOPMENT AND MINES
PROVINCIAL MINING
RECORDERS'S OFFICE

**Mining Land Tenure
Map**

Date / Time of Issue: Mon Dec 21 15:43:54 EST 2015

TOWNSHIP / AREA
TREELINED LAKE AREA
















PLAN
G-2651

ADMINISTRATIVE DISTRICTS / DIVISIONS

Mining Division
Land Titles/Registry Division
Ministry of Natural Resources District

Kenora
KENORA
KENORA

TOPOGRAPHIC

- | | |
|---|---------------------------|
|  | Administrative Boundaries |
|  | Township |
|  | Concession, Lot |
|  | Provincial Park |
|  | Indian Reserve |
|  | Clt, Pt & Pile |
|  | Contour |
|  | Mine Shaft |
|  | Mine Headframe |
|  | Railway |
|  | Road |
|  | Trail |
|  | Natural Gas Pipeline |
|  | Utilities |
|  | Tower |

Land Tenure

- | | |
|---|-----------------------------|
|  | Surface And Mining Rights |
|  | Surface Rights Only |
|  | Mining Rights Only |
| Leasehold Patent | |
|  | Surface And Mining Rights |
|  | Surface Rights Only |
|  | Mining Rights Only |
| Licence of Occupation | |
|  | Licence Not Specified |
|  | Surface And Mining Rights |
|  | Surface Rights Only |
|  | Mining Rights Only |
|  | Land Use Permit |
| Order In Council (Not open for stanning) | |
|  | Water Power Lease Agreement |
| Mining Claim | |
| 1234567 | |
| Filed Only Mining Claims | |

LAND TENURE WITHDRAWALS

- | | |
|------|-------------------------------------|
| 1234 | Areas Withdrawn from Disposition |
| | Mining Acts Withdrawal Types |
| Warn | Surface And Mining Rights Withdrawn |
| Wa | Surface Rights Only Withdrawn |
| Win | Mining Rights Only Withdrawn |
| | Order in Council Withdrawal Types |
| W'am | Surface And Mining Rights Withdrawn |
| W'a | Surface Rights Only Withdrawn |
| W'm | Mining Rights Only Withdrawn |

Scale 1:50173

0m 500m 1km

LAND TENURE WITHDRAWAL DESCRIPTIONS (list may not be complete)

Identifier	Type	Date	Description
694	Warn	Jan 1, 2001	FLOODING H.E.P.C. ELEVATION: 1049 FT FILE: 34179 PLAN: U2-27 H.E.P.C. PLAN: 800-3389
699	Warn	Jan 1, 2001	FLOODING ELEVATION: 5 FT FILE: 34179 & 060307
719	Warn	Jan 1, 2001	FLOODING H.E.P.C. ELEVATION: 1049 FT TERM 99 YRS FROM 28 MAY 1956 FILE: 34179 VOL3

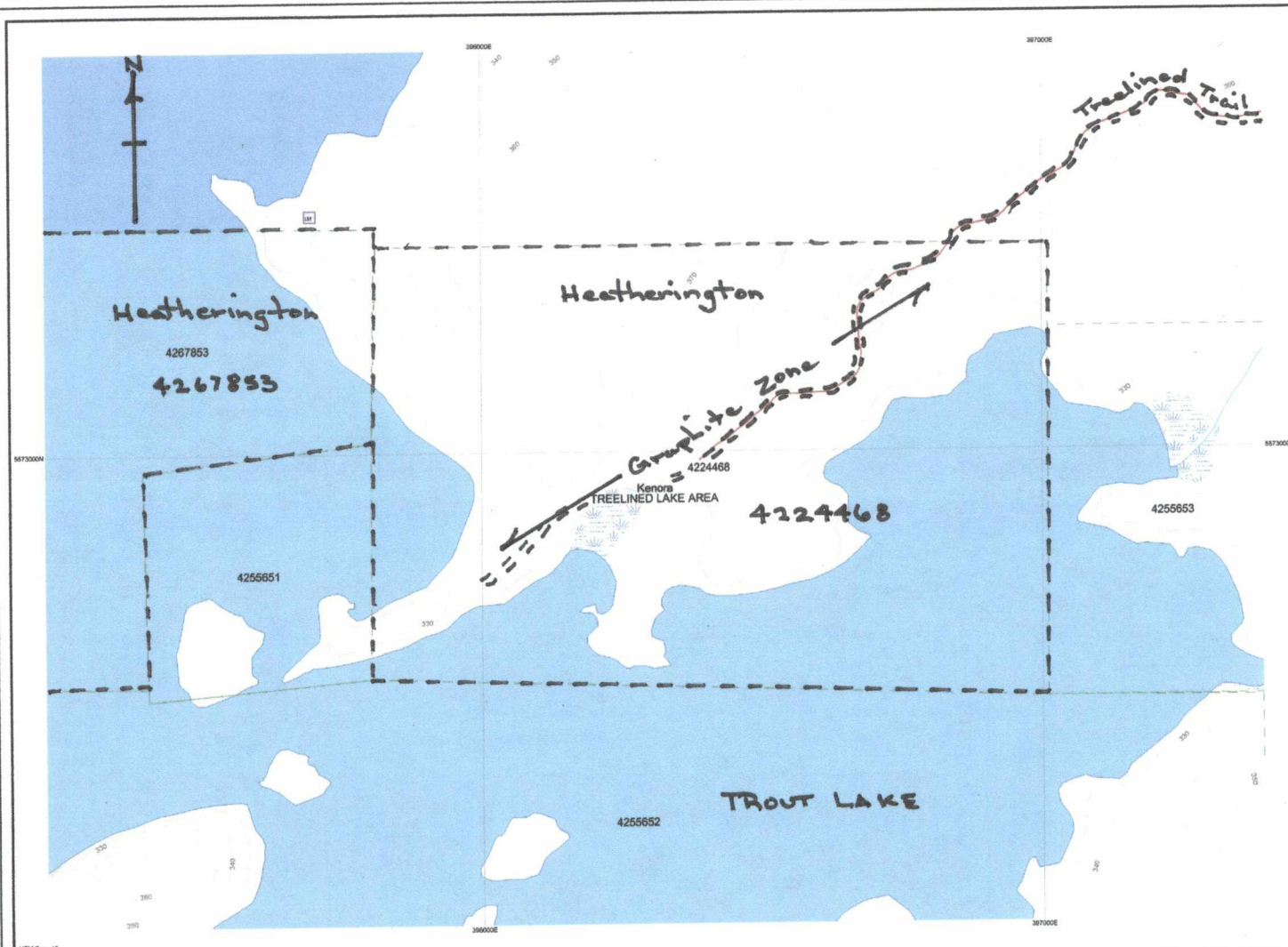
- Penny L. Heatherington -
Tree-lined Graphite
Property

Dec. 2013

ASMA

17/19

Figure 3: Treelined Graphite Property



ONTARIO
CANADA

MINISTRY OF NORTHERN
DEVELOPMENT AND MINES
PROVINCIAL MINING
RECORDERS' OFFICE

Mining Land Tenure
Map

Date / Time of Issue: Fri Dec 18 19:31:39 EST 2015

TOWNSHIP / AREA
TREELINED LAKE AREA

PLAN
G-2651

ADMINISTRATIVE DISTRICTS / DIVISIONS

Mining Division
Land Titles/Registry Division
Ministry of Natural Resources District

Kenora
KENORA
KENORA

TOPOGRAPHIC

- Administrative Boundaries
- Township
- Concession, Lot
- Provincial Park
- Indian Reserve
- Off, Pt & Pile
- Contour
- Mine Shafts
- Mine Headframe
- Railway
- Road
- Trail
- Natural Gas Pipeline
- Utilities
- Tower

Land Tenure

Procedural Patent

- Surface And Mining Rights
- Surface Rights Only
- Mining Rights Only

Leasehold Patent

- Surface And Mining Rights
- Surface Rights Only
- Mining Rights Only

Licenses of Occupation

- Uses Not Specified
- Surface And Mining Rights
- Surface Rights Only
- Mining Rights Only
- Land Use Permit
- Order in Council (Not open for staking)
- Water Power Lease Agreement
- Mining Claim
- Free Only Mining Claim

LAND TENURE WITHDRAWALS

- 1234 Areas Withdrawn from Disposition
- Mining Acts Withdrawal Types
- Surface And Mining Rights Withdrawn
- Surface Rights Only Withdrawn
- Mining Rights Only Withdrawn
- Order in Council Withdrawal Types
- Surface And Mining Rights Withdrawn
- Surface Rights Only Withdrawn
- Mining Rights Only Withdrawn

IMPORTANT NOTICES



- Penny L. Heatherington -
Treelined Graphite
Property

Dec. 2015

AJMD

Those wishing to stake mining claims should consult with the Provincial Mining Records' Office of the Ministry of Northern Development and Mines for additional information on the status of the lands shown hereon. This map is not intended for navigational, survey, or land title determination purposes as the information shown on this map is compiled from various sources. Completeness and accuracy are not guaranteed. Additional information may also be obtained through the local Land Titles or Registry Office, or the Ministry of Natural Resources.

The information shown is derived from digital data available in the Provincial Mining Records' Office at the time of downloading from the Ministry of Northern Development and Mines web site.

General Information and Limitations

Contact Information:
Provincial Mining Records' Office
Wild Green Mill Centre 933 Ramsey Lake Road
Sudbury ON P3E 6B5
Home Page: www.mdm.gov.on.ca/MINING/LANDS/tenuremap.htm

Toll Free
Tel: 1 (888) 415-0645 ext 574
Fax: 1 (877) 870-1444

Map Datum: NAD 83
Projection: UTM (6 degree)
Topographic Data Source: Land Information Ontario
Mining Land Tenure Source: Provincial Mining Records' Office

This map may not show unregistered land tenure and interests in land including certain patents, leases, easements, right of ways, flooding rights, licences, or other forms of disposition of rights and interests from the Crown. Also certain land tenure and land use that restrict or prohibit free entry to stake mining claims may not be illustrated.

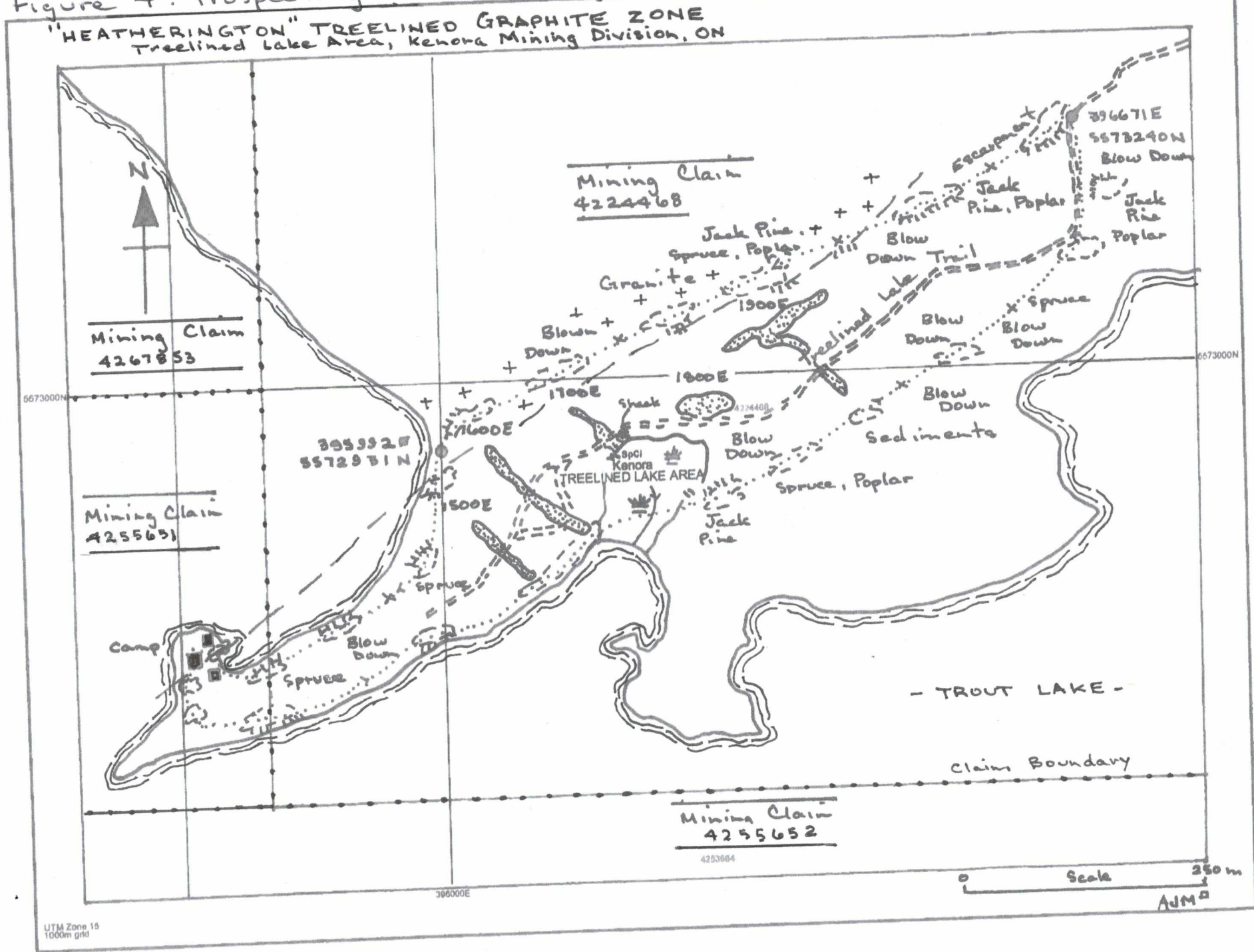
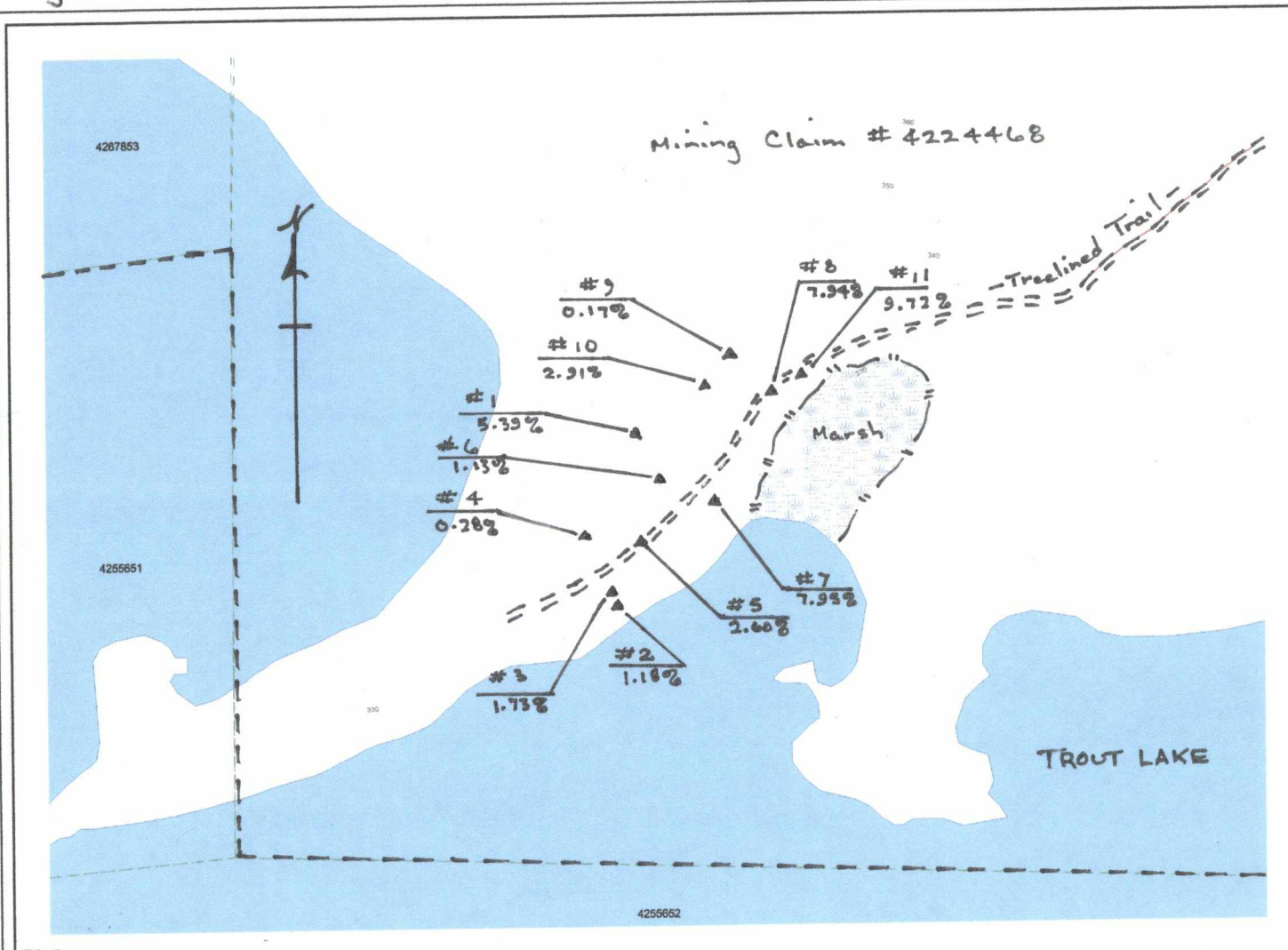


Figure 5: General Location of Sample Sites



ONTARIO
CANADA

MINISTRY OF NORTHERN
DEVELOPMENT AND MINES
PROVINCIAL MINE
RECORDERS' OFFICE

Mining Land Tenure
Map

Date / Time of Issue: Tue Dec 22 11:17:34 EST 2015

TOWNSHIP / AREA
TREELINED LAKE AREA

PLAN
G-2651

ADMINISTRATIVE DISTRICTS / DIVISIONS

Mining Division
Land Titles/Registry Division
Ministry of Natural Resources District

Kenora
KENORA
KENORA

TOPOGRAPHIC

- Administrative Boundaries
- Township
- Concession, Lot
- Provincial Park
- Indian Reserve
- Clt, Pt & Pile
- Contour
- Mine Shafts
- Mine Headframe
- Railway
- Road
- Trail
- Natural Gas Pipeline
- Utilities
- Tower

Land Tenure

Freehold Patent

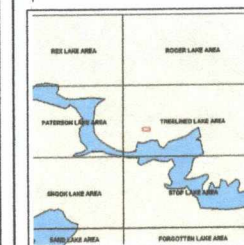
- Surface And Mining Rights
- Surface Rights Only
- Mining Rights Only

Leasehold Patent

- Surface And Mining Rights
- Surface Rights Only
- Mining Rights Only

License of Occupation

- Uses Not Specified
- Surface And Mining Rights
- Surface Rights Only
- Mining Rights Only
- Land Use Permit
- Order in Council (Not open for staking)
- Water Power Lease Agreement



LAND TENURE WITHDRAWALS

- 1234 Areas Withdrawn from Disposition
- Mining Acts Withdrawal Types
- Surface And Mining Rights Withdrawal
- Surface Rights Only Withdrawal
- Mining Rights Only Withdrawal
- Order in Council Withdrawal Types
- Surface And Mining Rights Withdrawal
- Surface Rights Only Withdrawal
- Mining Rights Only Withdrawal

IMPORTANT NOTICES



TREELINED GRAPHITE
PROPERTY
- General Sample Location -
#1 sample
5.39%
Sample location with
carbon assay

Dec. 2015
AJMA

Those wishing to stake mining claims should consult with the Provincial Mining Records' Office of the Ministry of Northern Development and Mines for additional information on the status of the lands shown hereon. This map is not intended for navigational, survey, or land title determination purposes as the information shown on this map is compiled from various sources. Completeness and accuracy are not guaranteed. Additional information may also be obtained through the local Land Titles or Registry Office, or the Ministry of Natural Resources.

The information shown is derived from digital data available in the Provincial Mining Records' Office at the time of downloading from the Ministry of Northern Development and Mines web site.

General Information and Limitations

Contact Information:
Provincial Mining Records' Office
Wild Green Mill Centre 933 Ramsey Lake Road
Sudbury ON P3E 5B5
Home Page: www.mndm.gov.on.ca/MNDM/MINESLANDS/minepage.htm

Toll Free:
Tel: 1 (888) 415-6945 ext 574
Fax: 1 (877) 875-1444

Map Datum: NAD 83
Projection: UTM (8 degrees)
Topographic Data Source: Land Information Ontario
Mining Land Tenure Source: Provincial Mining Records' Office

This map may not show unregistered land tenure and interests in land including certain patents, leases, easements, right of ways, bonding rights, bonuses, or other forms of disposition of rights and interest from the Crown. Also certain land tenure and land uses that restrict or prohibit free entry to stake mining claims may not be illustrated.

Fax Confirmation Report

Date & Time : 23-DEC-2015 02:26PM WED
 Fax Number : 2048973236
 Fax Name : THE UPS STORE
 Model Name : WorkCentre 3550

"Back-up Copy"

No.	Remote Station	Start Time	Duration	Page	Mode	Job Type	Result
001	17056705681	23-12 02:19PM	05'59	020/020	EC	HS	Success

Abbreviations:

HS: Host Send	PL: Polled Local	CP: Completed	TS: Terminated by System
HR: Host Receive	PR: Polled Remote	FA: Fail	TU: Terminated by User
MS: Mailbox Save	WS: Waiting To Send	RP: Report	G3: Group3
MP: Mailbox Print	EC: Error Correct		

FAX Transmittal Sheet

3336 Portage Ave.
 Winnipeg, MB R3K 2H9
 store119@theupsstore.ca

The UPS Store

FAX: (204) 897-3236 PHONE: (204) 897-3235

Date: Wed., Dec. 23, 2015

To: Ministry of Northern Development & Mines
Conservation Asst. Office, Sudbury P3E 6B5

Fax No: 1-705-670-5681

From: Alasdair Mowat

Phone No: 807-466-3296 (Winnipeg 1-204-888-7625)

of Pages (including this sheet): 20

Message: Please except this assessment work report.

The Rpt. consists of 19 pages.
Also, I am forwarding by post a copy.
If you have any concerns or questions, you may
reach me by calling 807-466-3296 or at my
daughter's in Winnipeg 204-888-7625. I will
be returning to Kenora this coming Sunday after
Christmas.

Regards, Al. Mowat / [Signature]