

DATE: OCT 24, 2015

TO: MNAM ASSESSMENT OFFICE

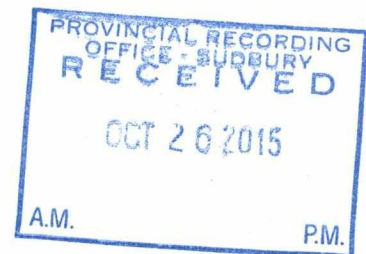
FROM: JOHN BRADY - 8 pages incl. this cover

RE: ASSESSMENT WORK ON CLAIM 1249369-

*NOTE - CLAIM IS DUE OCT 24, 2015 *

John Brady

2-56353



2-56353

LOUGHRIN- HENRY TWP. DIMENSION STONE PROPERTY-2015

PROPERTY: Mining Claim 1249369 -Sudbury Mining District

LOCATION/ACCESS: The property straddles the north- south boundary between Loughrin and Henry townships. It is located on Hwy 535 and is 16 KM north of Hagar, On. ; which is 60 Km east of Sudbury, On..

PREVIOUS WORK: From 1992 to 1994 extensive surface stripping and small test block removal and ASTM testing of dimension stone was carried out.

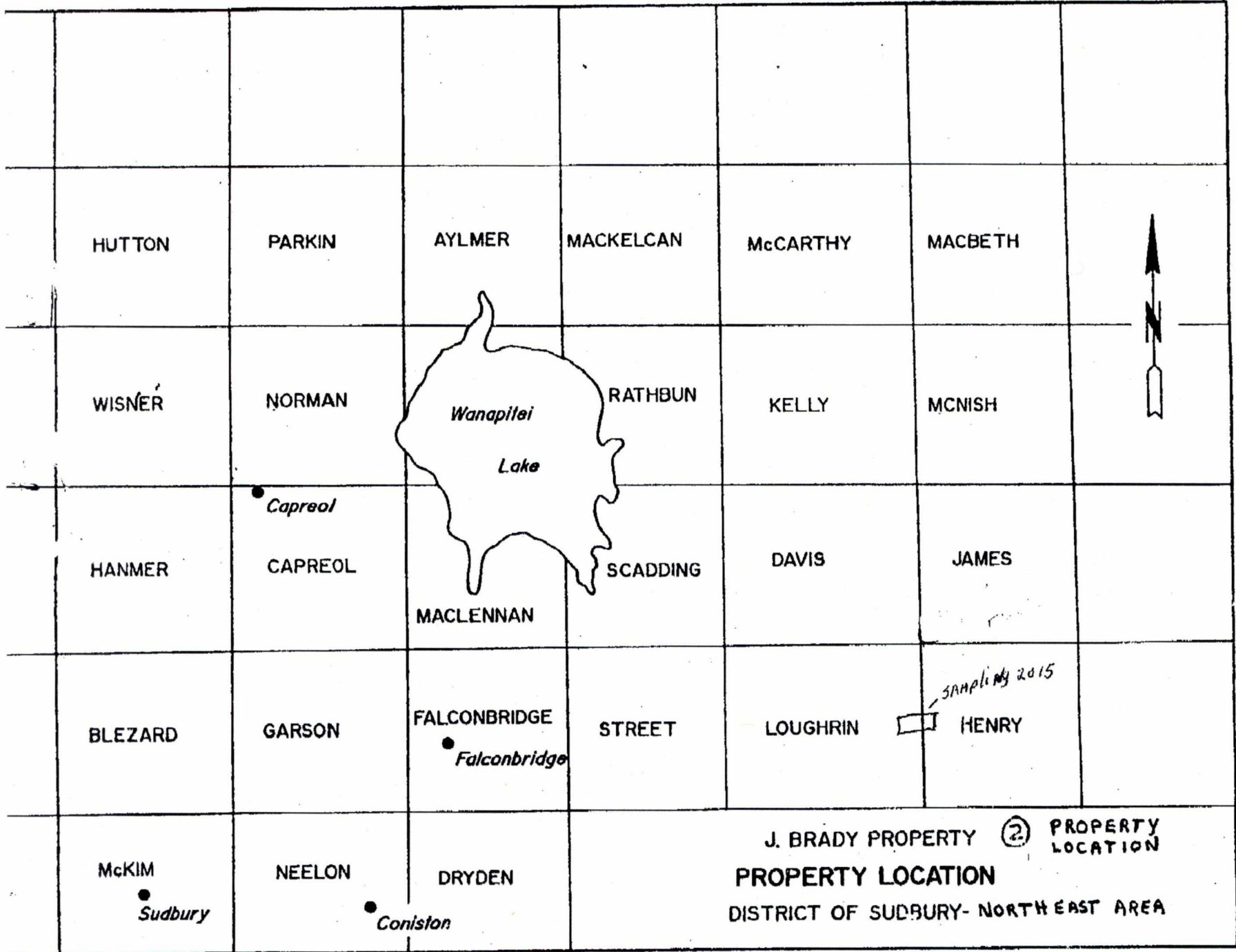
GEOLOGY: The stone deposit lies within the Central Gneiss Belt of the Grenville Province of the Precambrian Shield. The host rocks are pegmatitic granites and metadiabase dykes of late Precambrian age.

PURPOSE: To obtain fresh representative samples from the property to supply to potential developers.

WORK PROGRAM: Mucking and cleaning old rock trenches and surrounding outcrop using shovels, chisels and sledge hammer to obtain both pink and black rock samples. The samples are described as medium grained mottled pink with fine .5cm pegmatite veinlets which gives the stone a 'marbled' appearance.; and a very fine grained black 'trap' stone - a type of metadiabase.

John Brady - Oct.23, 2015





Loughrin Twp

Henry Tp

N



Location J. Brady/2005
MHP

UTM Zone 17
5000m grid

0 400M 800M

p.7

705 525 4130

P007

Oct 24 2015 10:15pm

JOHN BRADY

Received: 7055254130
24 Oct 15 09:35p

J. BRADY
Building/DIMENSION STONE SAMPLING - 2015

p.8

7055254130

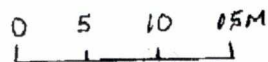
P008

Oct 24 2015 10:16pm

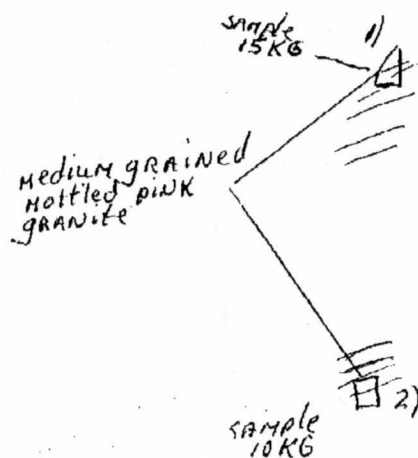
JOHN BRADY

Received: 7055254130
24 Oct 15 09:37p

Loughrin Twp.



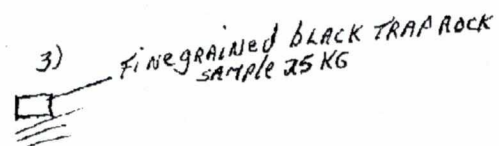
- - old TRENCHES
- ≡ - CLEANED / MUCKED
- ① 1) 3M X 4M X 10CM
- ② 2) 4M X 2M X 15CM
- ③ 3) 2M X 2M X 10CM



HWY 535

CLAIM 1248369
#1 POST 50M NE.

NORTH
NST



HENRY TWP.