

We are committed to providing [accessible customer service](#).  
If you need accessible formats or communications supports, please [contact us](#).

Nous tenons à améliorer [l'accessibilité des services à la clientèle](#).  
Si vous avez besoin de formats accessibles ou d'aide à la communication, veuillez [nous contacter](#).

PROSPECTING REPORT

BARBARA LAKE AREA

For

Wade Kornik

By: Joe-Anne Salo  
October 2015

## INTRODUCTION

Kornik Barbara Lake Lithium Property was prospected during the week of October 12-16 by Joe-Anne and Larry Salo of Connaught.

Kornik is about to enter into an option agreement and Salo is doing the work on behalf of the Optionor.

The property consists of seven claims however tis prospecting program concentrated on two of them.

This author has personally been on the property and can relate first hand the findings by summarizing field notes and using GPS Co-ordinates and photographs. Some statistical data has been extracted from published reports on-line with Ontario Ministry of Northern Development and ines (MNDM) and is considered to be reliable.

Although not yet received from MNDM the four First Nations that would need to be consulted with for permits on future explorations are: Sandpoint, Lake Helen, Lake Nipigon and Rocky Bay.

PROPERTY AND ACCESS

| [Main Menu](#) | [Back](#) |

**THUNDER BAY Mining Division - 153397 - KORNIK, WADE TRAVIS**

Township/Area	Claim Number	Recording Date	Claim Due Date	Status	Percent Option	Work Required	Total Applied	Total Reserve	Claim Bank
BARBARA LAKE AREA	<a href="#">4257865</a>	2013-Oct-17	2015-Oct-17	A	100 %	\$ 4,000	\$ 0	\$ 0	\$ 0
BARBARA LAKE AREA	<a href="#">4257866</a>	2013-Oct-17	2015-Oct-17	A	100 %	\$ 6,400	\$ 0	\$ 0	\$ 0
BARBARA LAKE AREA	<a href="#">4257867</a>	2013-Oct-17	2015-Oct-17	A	100 %	\$ 4,800	\$ 0	\$ 0	\$ 0
BARBARA LAKE AREA	<a href="#">4257868</a>	2013-Oct-17	2015-Oct-17	A	100 %	\$ 3,600	\$ 0	\$ 0	\$ 0
BARBARA LAKE AREA	<a href="#">4257869</a>	2013-Oct-17	2015-Oct-17	A	100 %	\$ 4,800	\$ 0	\$ 0	\$ 0
BARBARA LAKE AREA	<a href="#">4257871</a>	2013-Oct-17	2015-Oct-17	A	100 %	\$ 3,600	\$ 0	\$ 0	\$ 0
BARBARA LAKE AREA	<a href="#">4257872</a>	2013-Oct-17	2015-Oct-17	A	100 %	\$ 6,400	\$ 0	\$ 0	\$ 0

The claims are registered to Wade Kornik of Ottawa. They are located in Barbara Lake area in Thunder Bay Mining Division, for a total of 84 units.

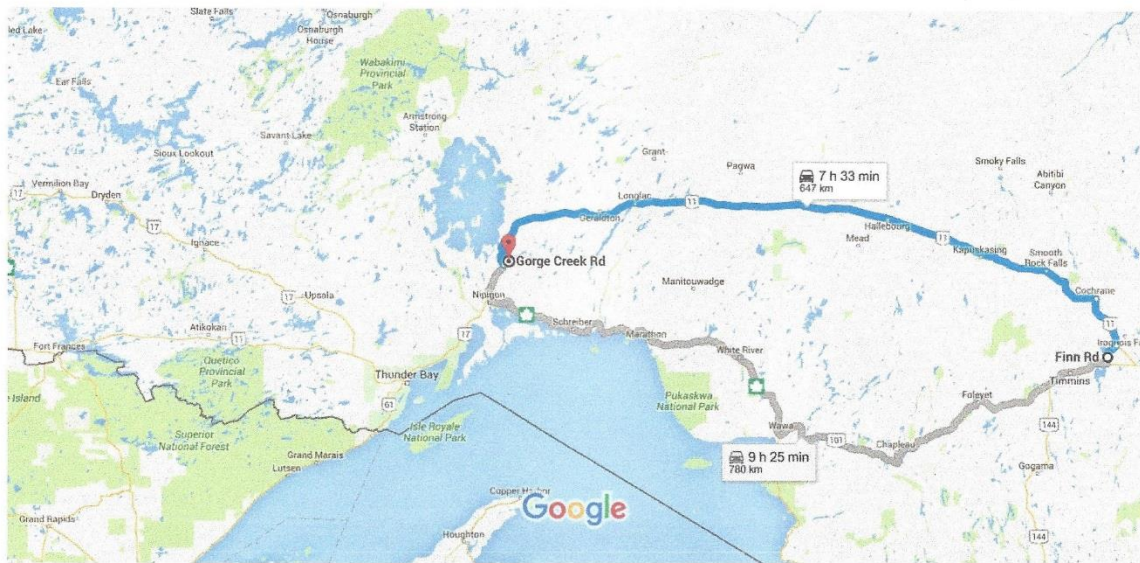


The property can be reached off of Highway 11- approximately 40kms west from Beardmore or 40 kms east from Nipigon. A south road “Gorge Creek Road” at 16U 420074E, 5461784N- travel south for approx.. 3.7km along this pole line road. The first fork in the road is at 16U 423406E, 5463373N, take the right side. Travel approx. 2.2km to the next fork at 16U 424893E, 5462300N, take the left side. Travel another 205km t the next fork at 16U 427292E, 5462310N and take the right side. The road ends at a washed out bridge at 16U 428794E, 5462671. A four wheeler is required from this point on. The property is approx. 4 kms by bike.

Google Maps

Finn Rd, Connaught, ON P0N 1A0 to  
Gorge Creek Rd, Greenstone, ON P0T

Drive 647 km, 7 h 33 min



Map data ©2015 Google 50 km

## CLIMATE VEGETATION AND PHYSIOLOGY

The property is very much a mixed bag of spruce, balsam, jackpine, poplar, birch and cedar. There are several areas of swamp and several small lakes and rivers.

This author was intrigued by the number of different mushrooms growing in the area as well as the coloring of the mosses.

On the claims traversed by this report, the topography was rolling hills. The majority of the outcrops were covered by a layer of moss.

During this specific program the weather did not cooperate- sunshine, thunder and lightning storms, hail storms and snow.

## PROPERTY HISTORY

The Kornik property has seen sporadic work in different areas since 1955. The Salo Occurrence was the main focus of this program.

### Summary of History and assessment work.

1955

March E. W. Hadley discovered spodumene on an island.

42E05SW0007- Conwest Exploration- DD 601.C

42E05SW0010- Conwest Exploration- 29 diamond drill holes

42E05SW0011- Georgia Lake Lithium- Diamond Drilling

42E05SW0013- Ontario Lithium Corp- Diamond Drilling

42E05SW0015- Ontario Lithium Corp- Diamond Drilling

42E05SW0019- Ontario Lithium Corp- Diamond Drilling

42E05SW0026- Ontario Lithium Corp- Geology Report- P Gilmour

1957

42E05SW0020- Ontario Lithium Corp- Diamond Drilling

1979

42E05SW0024- Prospectus by Evergreen Energy Resources Ltd.

2009

20000005862-Roch Tech Lithium- Report on Exploration Work

2011

20000009418- Caracle Creek Inter. Channel Sampling

20000007174- Terraquest- Airborne Mag and EM

2012

20000007253- Golden Dory- Prospecting Report- P. Nielsen

Non-MNDM info

Oct 7, 2009- [www.bloomberg.com](http://www.bloomberg.com)

“Golden Dory LOI to Acquire Jackpot”

Jan 5, 2011- [www.bloomberg.com](http://www.bloomberg.com)

“Golden Dory options to Canadian Copper Core Inc.”

Jan 18, 2012- [www.bloomberg.com](http://www.bloomberg.com)

“Golden Dory signs LOI with Super Metals and Mining”

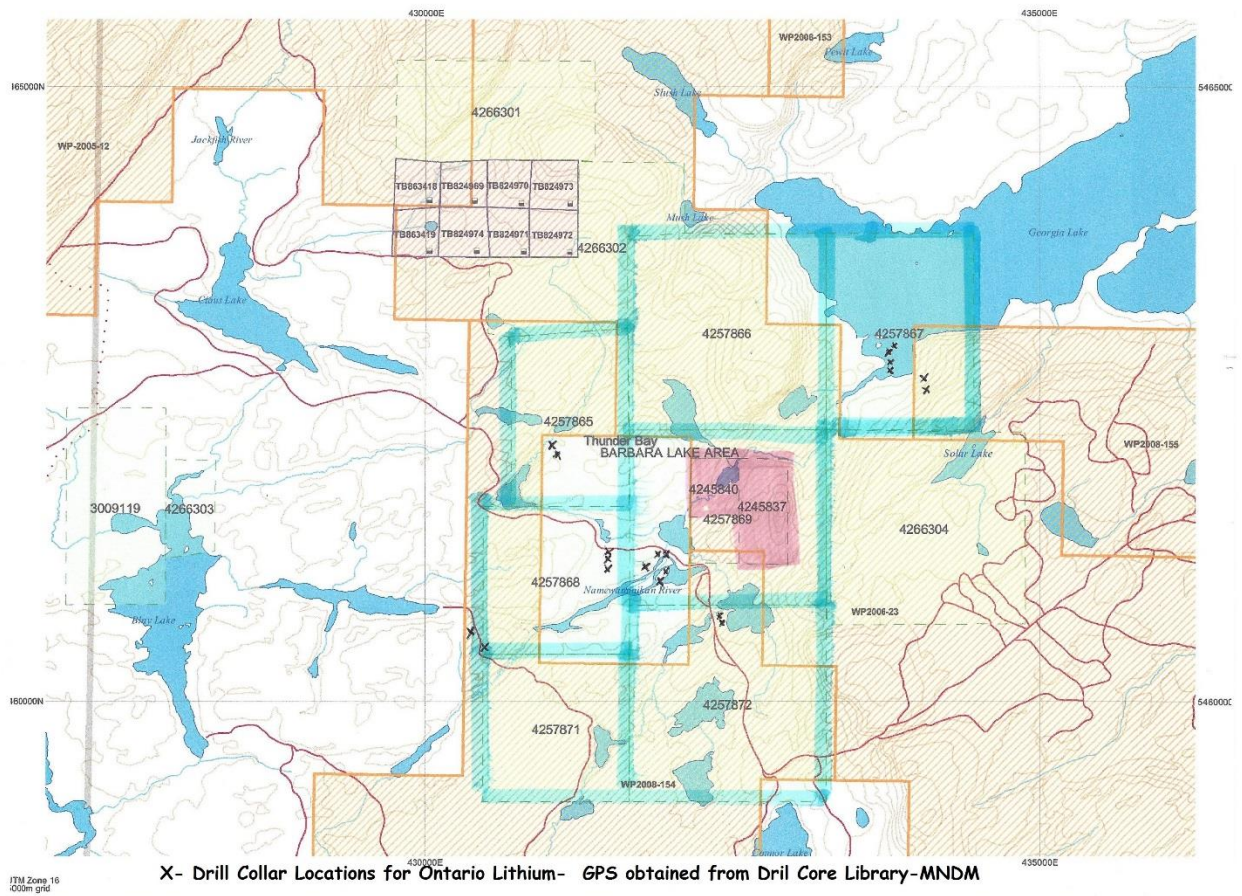
Sept 20, 2013- [www.sedar.com](http://www.sedar.com)

“Golden Dory announces share consolidation and Name Change”

August 2012- [www.sedar.com](http://www.sedar.com)

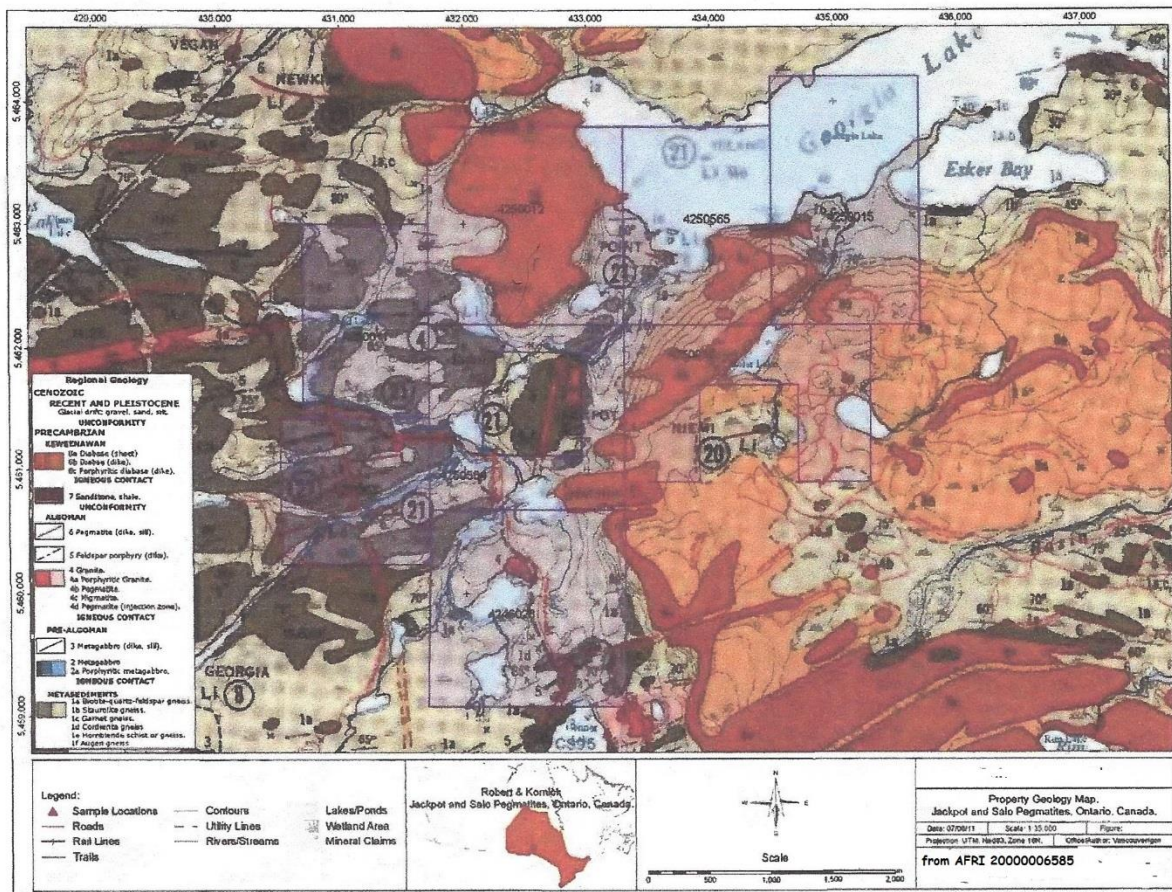
Caracle Creek International- NI43-101 for Rock Tech Lithium





The majority of diamond drilling on the Kornik property was done by Ontario Lithium Corp.

## REGIONAL GEOLOGY



Jackpot and Salo geology map (from Pye, 1965, Map 2056).

General geology as described by K. Pye- 1965, The area is underlain by Archean metasediments composed of a series of biotite-quartz-feldspar-biotite schists and gneisses and invaded by Precambrian diabase sills and dykes. The metasediments were also intruded by granitic rocks, including aplite, pegmatite and feldspar porphyry dykes which predate the diabasic intrusion.

The following formations are present on the property”

- Diabase and basalt
- Granite rocks (including Pegmatites)
- Quartz-mica schist

## CURRENT PROGRAM

Oct 12/15- Prepare for project  
-obtain GPS co-ord's for Salo Occurrence

MDI42E05SW00020

-obtain directions to property  
-fuel truck, load 4 wheeler and gear

Oct 13/15- Drive from Connaught to Geraldton- 582 km

Oct 14/15- to Property for Area 1-65 km

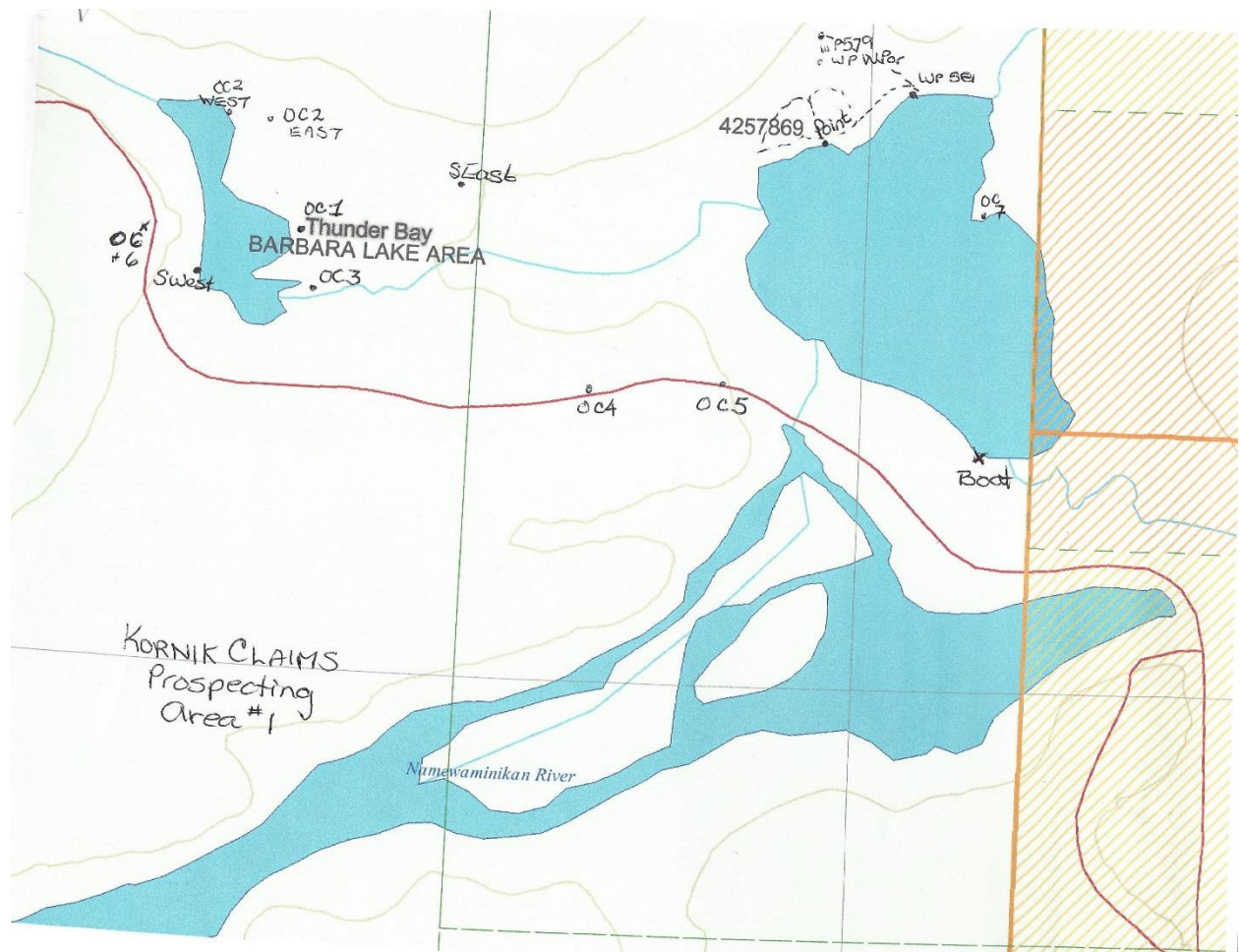
-spent night in Nipigon- 65 km

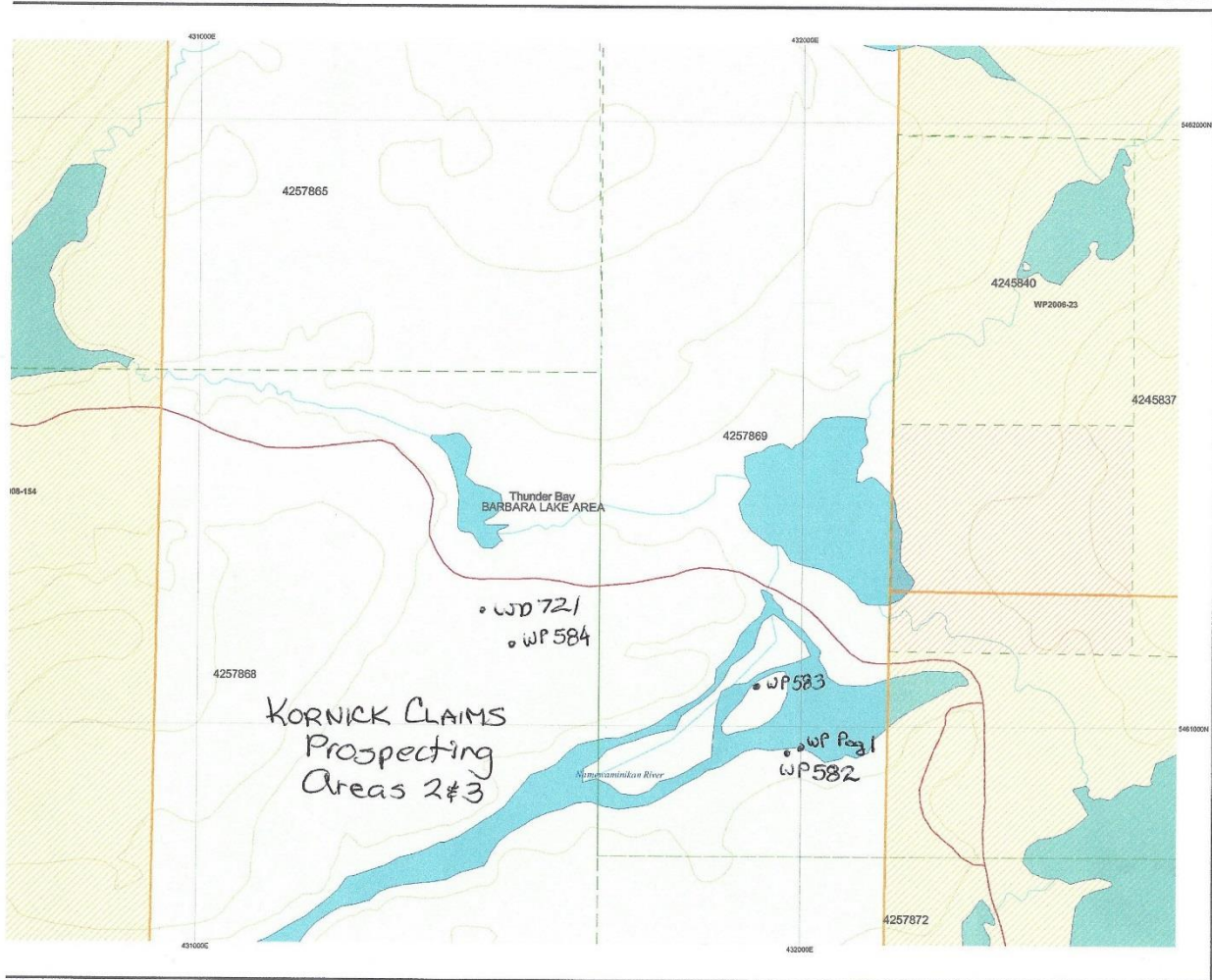
Oct 15/15- to Property for Area 2 and 3- 65 km

Oct 16/15- Nipigon to Connaught 687 km

Oct 17-18/15- research data and write report

**IT IS IMPORTANT TO NOTE THAT THE FIELD SKETCHINGS ARE NOT DONE TO SCALE: ALL LOCATIONS ON MAPS FROM THIS POINT IN THE REPORT ARE EXACT BY GPS AND CLAIMMAPS ONTARIO.**

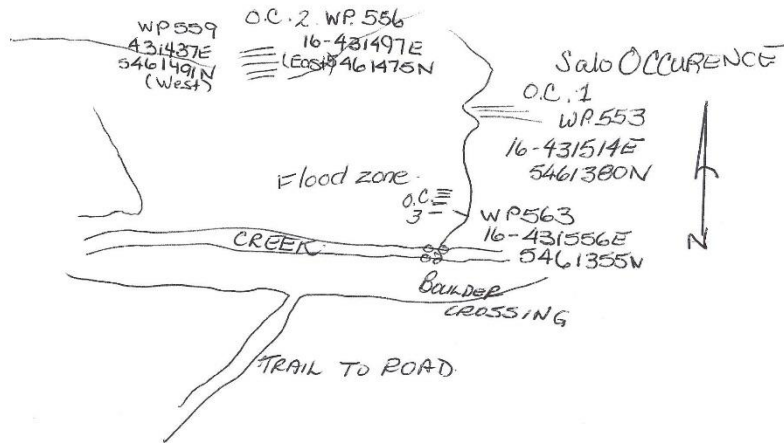




## FIELD NOTES AND SKETCHES

Oct 14, 2015

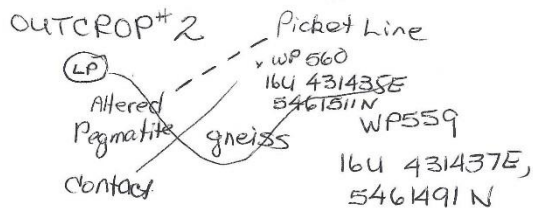
AREA #1



OUTCROP 1 - location as indicated by MDI 42E055W 00020 to be the Salo Occurrence. Pin point by drill holes. No sign of drilling after checking Drill Core Library C.P.S. coordinates, the MDI is not correct. - The outcrop is quartz-muscovite. The weathering and moss covering it appeared as a pegmatite until opened.

Photo 009 - on south side of creek looking north over flood zone  
Photo 020 - sample of muscovite  
Sample # 27796

OUTCROP 2 - North shore of flood zone.  
Photo 011 - looking north over outcrop  
Photo 012 - contact between pegmatite and gneiss



WP 560 - light fine grained arkose  
Photo 016

-- evidence of old picket line

(LP) unlegible line post.

WP 562 - 16U 431517E 5461502 N

- while traversing from OC1 to OC2 a small part  
of the outcrop - brown arkose striking east-west

— H —

SALO OCCURENCE - OUTCROP #1

This outcrop was explored and traced:

S West of SEast

SEast - traced outcrop & eastward for approx.  
150 meters

WP ESabhi 16U-431633E, 5461420

Photo 027 - slight altering from muscovite  
to a more quartz-like rock (also photo 029)

Sample 27797

S West - on strike from SEast and OC1 on west  
side of flood zone

WP WSabhi 16U 431422E 5461347

- diorite - not send for assay



OUTCROP #3

- Photo 017 - flat lying gneiss (tuff like)  
- off of outcrop 3 heading north to outcrop 1  
the flood zone is a boulder bed with  
one foot round bombs of pegmatite

OUTCROP #4

- WP 566 - 16U 431768E, 5461254N  
- flat, smooth lying gneiss.  
- small pieces of angular pegmatite but  
seem to be out of place

OUTCROP #5

- WP 567 - 16U 431870E, 5461259N  
- flat lying gneiss

x Boat - the local hunters from Lindsay were  
kind enough to lend us their boat  
to cross the lake

WP 568 - 16U 432087E, 5461198N

OUTCROP #6

- striking north-south, parallel to the road

Gneiss    Diorite    Porphyry    Gneiss

approx 60' long 20' high

WP-571 16U 431371E 5461361N

Photo 039

OUTCROP #7

WP 570 - 16U 432102E 5461408N

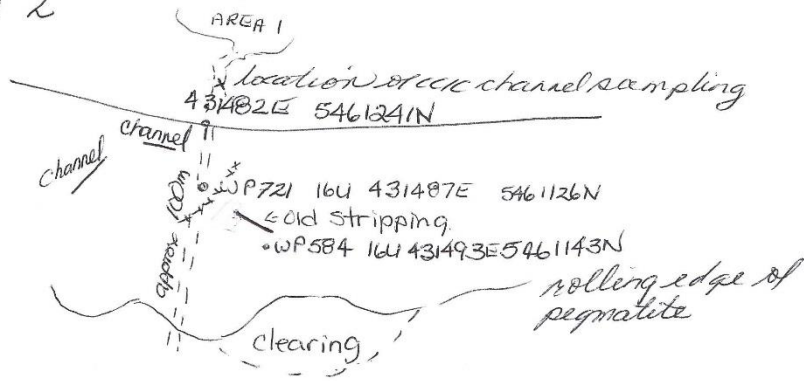
Pegmatite on shore

Photos 051 & 052

POINT- 16U 431946E, 5461471N

- traversed looking for stripping and drill hole  
- only old drill road located

AREA 2



WP721-16U 431487E 5461126N

- suppose to be Ontario Lithium drill hole as this is outcrop
- ~~xxx~~ - old drill road located but not drill collar

- Photo 073 - rolling edge of pegmatite
- Photo 075 - Larry standing in presumed old trench
- Photo 076 - pegmatite outcrop
- Sample 27799 - pegmatite with spodumene crystals
- Photo 077 - clearing
- Photo 083 - channel sampling by Caracle Creek
  - biotite gneiss with quartz stringer

WP 585 - 16U 430547E 5460443N  
- tried to get to this location by roads  
- should be #3 post of 4257868 and location  
of Con West drill hole #401-C

WP 570 - 16U 433183E 5459577  
- fork in road claim 425872  
- road to Georgia and Barbara Lakes

WP 583 - 16U 431923E 5461065N  
- Island in Nam River  
- traversed trying to locate drilling - not found

WP 582 - 16U 431993E 5460964N  
- access to island

WP Peg 1 - 16U 431999E 5460970N  
Photo 056 outcrop on island - pegmatite  
Sample 27798  
Photo 061 - pegmatite - sintalometer  
reading 124 (background 75)

PHOTOS AS REFERENCED IN FIELD NOTES



FACING NORTH ACROSS FLOOD ZONE



MUSCOVITE AT OUTCROP 1



LOOKING NORTH OVER OUTCROP 2



CONTACT BETWEEN PEGMATITE AND GNEISS- OUTCROP 2





FINE GRAINED ARKOSE WP 560 OUTCROP 2



SLIGHT ALTERING IN MUSCOVITE AT SALO EAST- OUTCROP 1



FLAT LYING GNEISS OUTCROP 3



SAMPLE FROM EAST FACE OF OUTCROP-OUTCROP 6



OUTCROP 7



OUTCROP 7



ROLLING EDGE OF PEGMATITE- AREA 2



LARRY N OLD TRENCH-AREA 2





PEGMATITE OUTCROP AREA 2



CLEARING SOUTH OF ROLLING EDGES AREA 2



CHANNEL SAMPLING BY CARACLE CREEK INTERNATIONAL



SIDE OF ISLAND



PEGMATITE ON ISLAND



SPODUMEME CRYSTALS FROM AREA 2

## OTHER PHOTOS







OLD CULVERT ON RIVER





ASSAYS PENDING

RESPECTFULLY SUBMITTED

*“Joe-Anne Salo”*