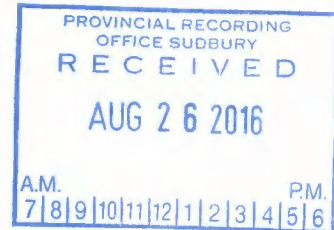


We are committed to providing [accessible customer service](#).
If you need accessible formats or communications supports, please [contact us](#).

Nous tenons à améliorer [l'accessibilité des services à la clientèle](#).
Si vous avez besoin de formats accessibles ou d'aide à la communication, veuillez [nous contacter](#).

2-57109



TECHNICAL REPORT

JULY 20 2016 TO AUG 19 2016

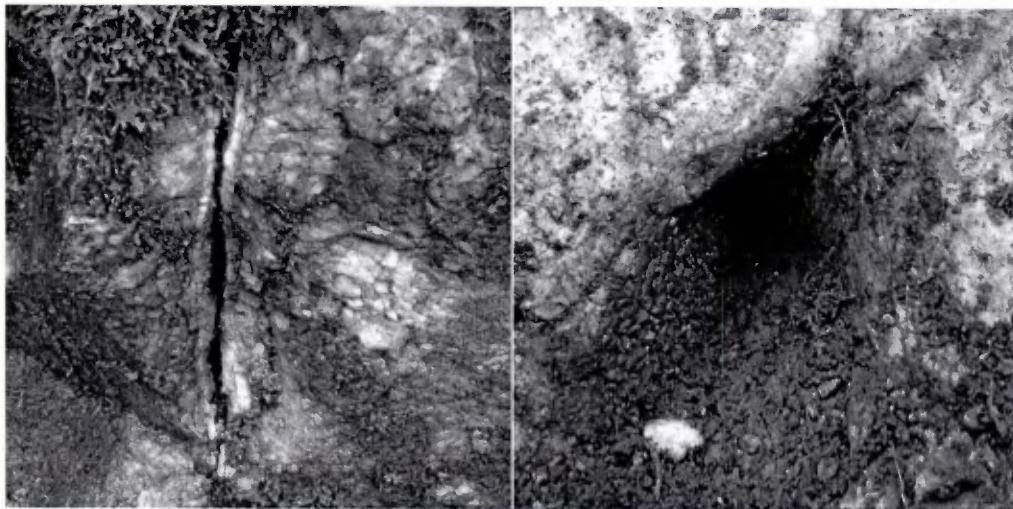
This report covers the prospecting and stripping work carried out from July 20 2016 to Sept 19 2016 on Diamond Willow Amethyst Mines located in Pearl Ontario. Diamond Willow Amethyst Mine has 2 mining right leases TB383373, TB383374, Surface and Mining right lease TB383371. Claim 4283720 exploration permit PR-15-10708 as well as Claim 4213521 and 4279495 exploration permit PR-16-10870. Diamond Willow Amethyst Mine is prospecting for Quartz veins and Amethyst on these Leases and Claims.

PROSPECTING was performed to locate Amethyst on TB383371 , the west side of Breezy creek, 2 Amethyst veins were located after removing moss off the granite bedrock with grub hoes. The area cleared was approximately 10 sq. meters. THE GPS UTM coordinates 377208E 5393899N. EL282M approximately 30M west of breezy creek, stripped moss off the bedrock and found veins of quartz and Amethyst showing. Approx. 4 hrs x 31.25 = \$125.00 on Aug 6 2016



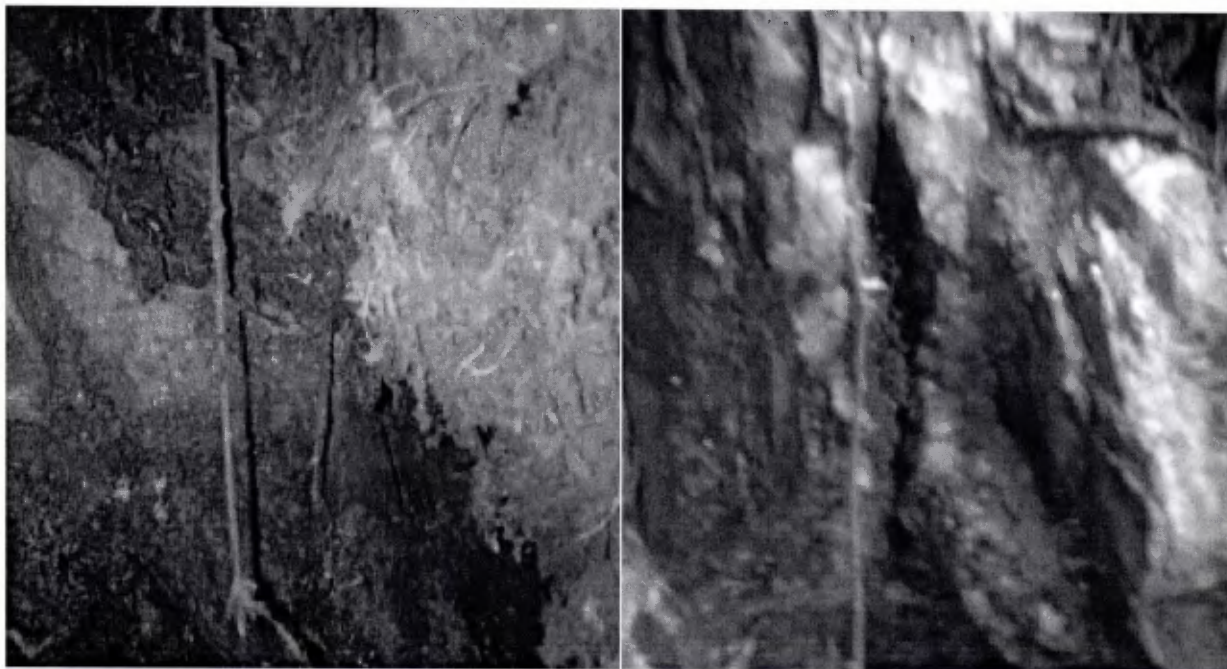
Pictures above part of stripped area and an outcrop of Amethyst close by.

Prospecting was also performed on **TB383373** to locate Amethyst on TB383373, west side of breezy creek up on the top of the bedrock hills in the central location of the Lease, the GPS UTM coordinates 376940E 5394007N el.316m stripped moss of bedrock using grubhoes, also found a vertical bedrock as seen in the pictures below. Approximately 4 hrs on Aug 16 2016



(TB383373)Above Vertical granite approximately 12' in height had quartz vein with amethyst inside, on top of the bedrock above the vertical granite there was an out crop of red and purple Amethyst under the moss. The top has several veins showing. Access is from the Diamond Willow Amethyst Mine using trails on foot.

Prospecting was also performed on 4283720 near the old mine site at Sward Lake and found quartz veins and Amethyst showing up in the existing mine under the moss, Beyond the mine on the bedrock hills quartz veins and small amethyst crystal structure are shown Aug 18 2016 4 hrs x 31.25=\$125.00



(4283720) Above picture was small crystal structure under moss beyond the mine up in the granite, 2nd picture was an amethyst out crop in the old mine under some moss that was cleared with grubhoe. Access was from an existing road that has grown in only accessible by ATV.

Prospecting was also performed on 4279495 on the west side where the granite bedrock is exposed and found signs of quartz in very small veins showing. Further exploration is required farther up the elevations. On the west side of the Claim. Access was from an old logging road using an ATV 4 hrs x 31.25 x 4hrs +\$125.00 on Aug 18 2016

Prospecting was performed in 4 location on 4213521 and found 4 quartz veins, I believe with more stripping 2 of the locations will join up. Prospecting at this location by walking the upper elevations with access from old logging roads along bald spots on the bedrock, stripped with grubhoes the moss off and recorded the locations GPS coordinates and came back for stripping with the backhoe, mobilize with backhoe and stripped 4 locations approximately .5 meters of top soil to expose more of the veins. . Gps coordinates for the 4 locations are 376677E 5392693N el 312m, 376642E 5392698N el 310m, 376680E 5392727N el 308m , 376666E 5392673N el 309m. the approximate square meters in total is 138sq meters stripped with backhoe. Prospecting was on Aug 19 2016 Backhoe work was performed on Aug 20 2016

Prospecting 8 hrs x 31.25= \$250.00

Backhoe stripping 8 hrs x 100=\$800.00



(4213521) 2 of the locations that Stripping was performed showing Quartz veins which are difficult to see in photos. More clearing will be required in near future before Drilling and blasting are performed.



(4213521)2 more of the areas that stripping was performed. Top left showing Quartz vein.

Summary of prospecting hours $24 \times 31.25 = 750.00$

Travel time $200\text{km} \times .50 = \100.00

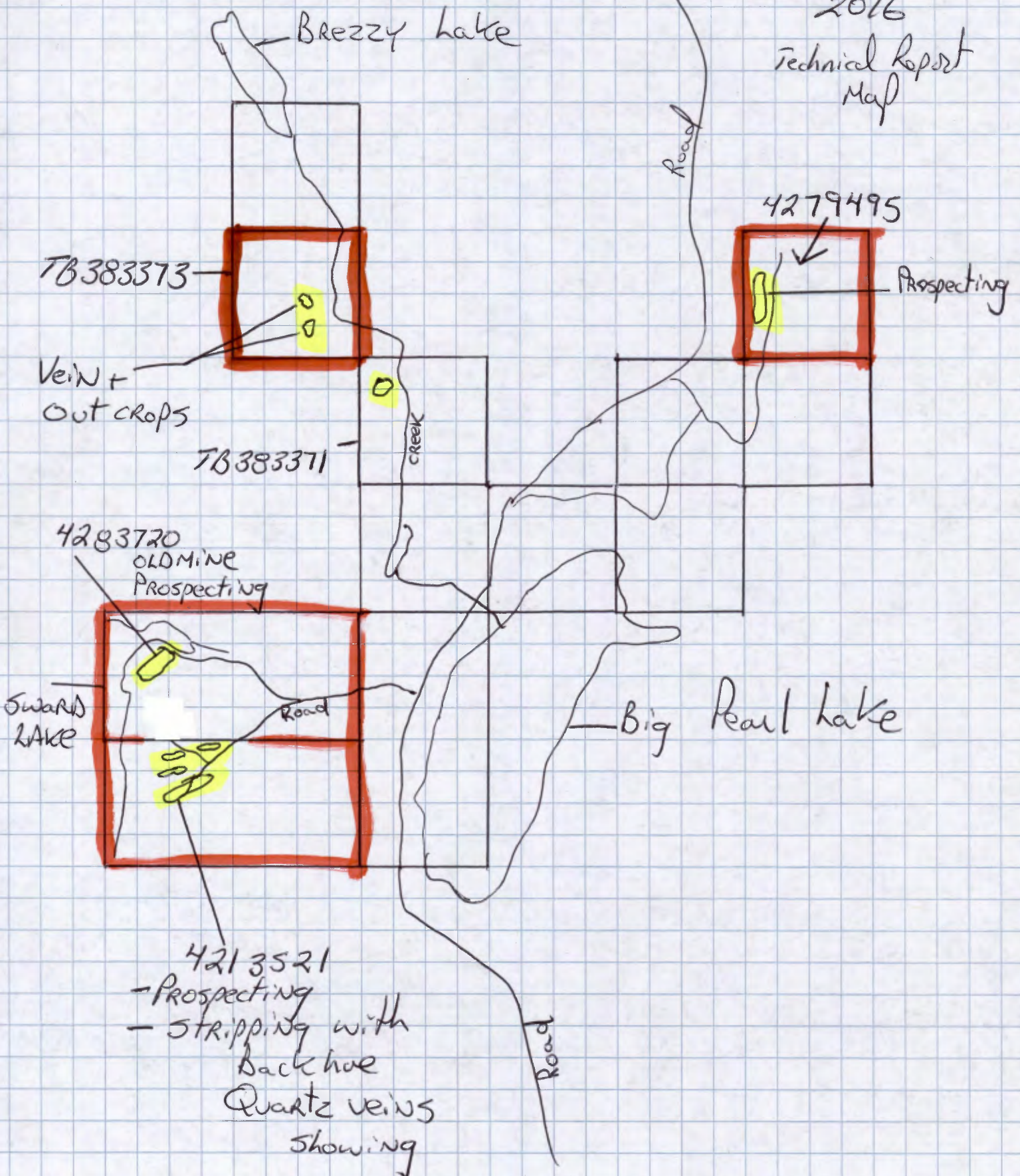
Backhoe $8 \text{ hrs} \times 100 + \800.00

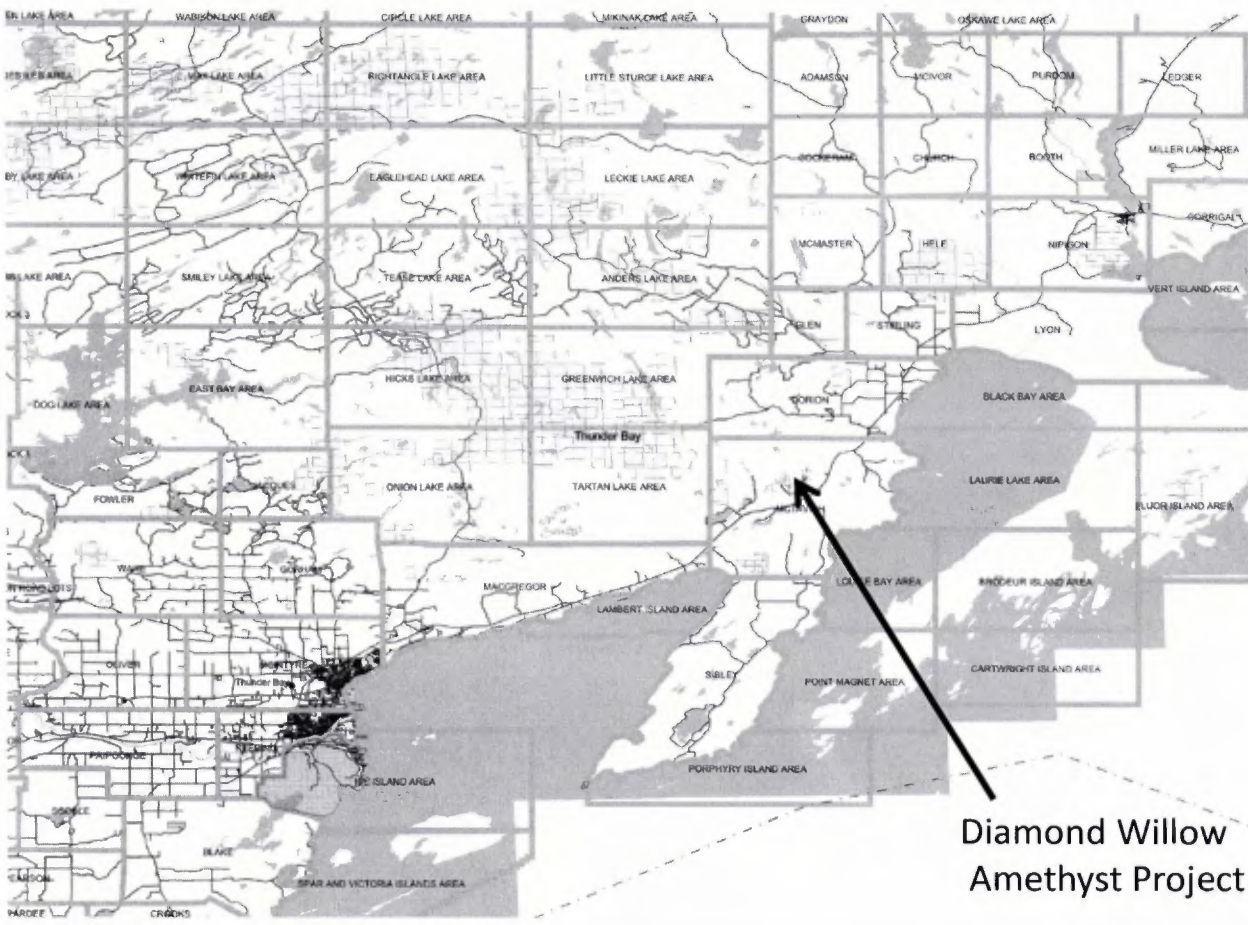
Atv for accessing 4213521, 4283720 and 4279495 for prospecting 3 different locations- $\$10.00$ for each location $\times 3 = \$30.00$

Brandon Leroux co-owner of Diamond willow Amethyst Mine. Aug 19 2016

Diamond Willow Amethyst Mine

July 20 to Aug 20
2016
Technical Report
Map





Diamond Willow
Amethyst Project

Date / Time of Issue: Wed Jun 17 09:55:00 EDT 2015

TOWNSHIP / AREA
TARTAN LAKE AREA

ADMINISTRATIVE DISTRICTS / DIVISIONS

Mining Division
Land Titles/Registry Division
Ministry of Natural Resources District

TOPOGRAPHIC

	Administrative Boundaries		Township
	Connection, L/R		Provincial Park
	Indian Reserve		Off. Rd & Pkwy
	Contour		Mine Shaft
	Mine Headframe		Railway
	Road		Trail
	Hydro Gas Pipeline		Utility
	Tower		

LAND



Mining claims should consult with the Provincial Mining Recorder's Office of the Ministry of Northern Development and Mines for additional information. This map is not intended for navigational, survey, or land title determination purposes as the information is derived from various sources. Completeness and accuracy are not guaranteed. Additional information may be obtained through the Provincial Mining Recorder's Office, or the Ministry of Natural Resources.

General Information and Limitations

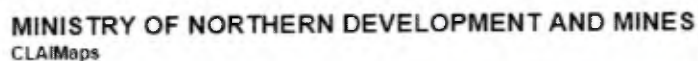
Contact Information:
Provincial Mining Recorder's Office
1000 Green Mill Centre 655 Ramsey Lake Road
Sudbury ON P3A 5B5
Web Page: www.mdm.gov.on.ca/MDM/MNR/LANDS/claimmap.htm

This map is not a legal document.

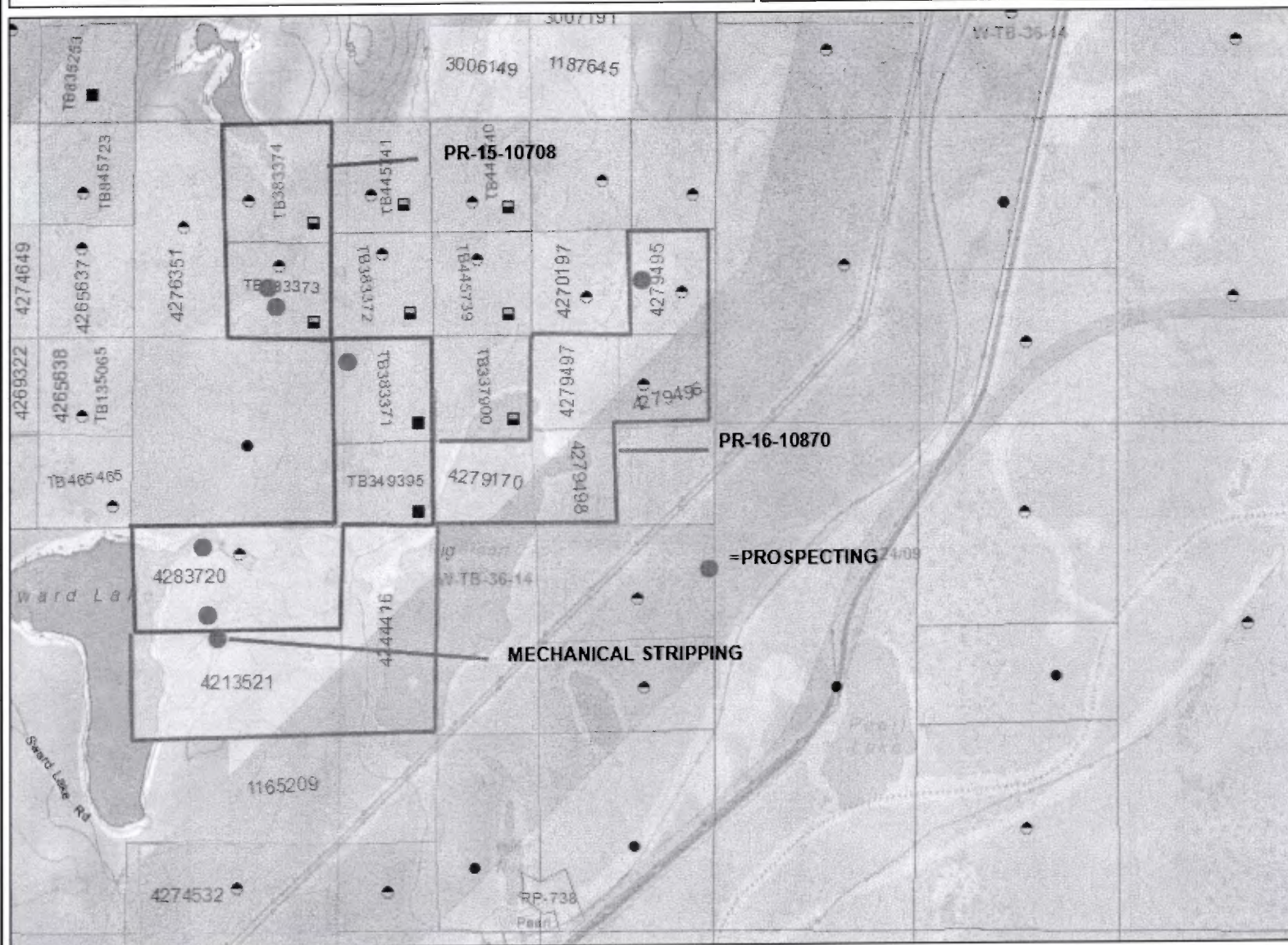
Map Datum: NAD 83
Projection: Geographic Coordinate
Topographic Data Source: Land Information Ontario
Mining Land Tenure Source: Provincial Mining Recorder's Office

This map may not show unregistered land tenure and interests in land including certain patents, leases, easements, right of ways, feeing rights, licences, or other forms of disposition of rights and interests from the Crown. Also, certain land tenure and land use that is not registered or not shown on this map may not be shown.

July 20 to Aug 19



Notes:
Enter map notes



Administration Boundaries

- Mining Divisions
 Resident Geologist District
 Townships and Areas
 UTM Grid
 Geographic Lot Fabric
 Other Federal Land
- Mineral Tenure Grid**
- OMTG Tenure Grid
- Alienations**
- Withdrawal
 Notice
- Unpatented Claim**
- Active
 Reconciled
 Pending
- Disposition**
- Disposition
- Disposition Symbols**
- ? Camp
 ? Disposition Unknown/Pending
 * Freehold Patent Mining Rights Only
 * Freehold Patent Surface Rights Only
 * Freehold Patent Surface and Mining Rights
 * Land Use Permit
 * Leasehold Patent Mining Rights Only
 * Leasehold Patent Surface Rights Only
 * Leasehold Patent Surface and Mining Rights
 * License of Occupation Mining Use Only
 * License of Occupation Surface Use Only
 * License of Occupation Surface and Mining Rights
 * License of Occupation Uses Not Specified
 * Order in Council
 * Tower
 * WPLA
- Geology Layers**
- * AMIS Sites
 * AMIS Features
 * Drill Holes
 * Mineral Occurrences



Projection: Web Mercator



The Ontario Ministry of Northern Development and Mines shall not be liable in any way for the use of, or reliance upon, this map or any information on this map. This map should not be used for: navigation, a plan of survey, routes, nor locations.

© Queen's Printer for Ontario, 2016

Imagery Copyright Notices: Ontario Ministry of Natural Resources and Forestry; NASA Landsat Program; First Base Solutions Inc.; Aéro-Photo (1961) Inc.; DigitalGlobe Inc.; U.S. Geological Survey.

© Copyright for Ontario Parcel data is held by Queen's Printer for Ontario and its licensors and may not be reproduced without permission.

