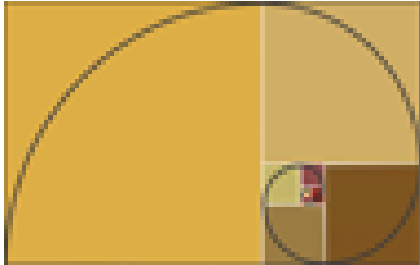


We are committed to providing [accessible customer service](#).
If you need accessible formats or communications supports, please [contact us](#).

Nous tenons à améliorer [l'accessibilité des services à la clientèle](#).
Si vous avez besoin de formats accessibles ou d'aide à la communication, veuillez [nous contacter](#).

**ASSESSMENT REPORT: 2014 DIAMOND DRILLING; CLEMENT
TOWNSHIPS, ONTARIO**



INVENTUS
MINING CORP

By:
Winston Whymark
Inventus Mining Corp.
36 Toronto St. Suite 1000
Toronto ON M5C 5S5

Mount Logan Resources Ltd.
36 Toronto St. Suite 1000
Toronto ON M5C 5S5

October 15th, 2015

Table of contents:

1. Introduction3

2. Location, Access and Physiography3

3. Claim Summary of applied work4

 Figure 1 - Project location.....4

 Table 1 - claim summary..... 4

 Figure 2 - Claim Location..... 5

4. General geological setting..... 6

5. Property Geology 6,7

6. Previous Work.....7,8,9,10,11,12

7. 2014 Diamond Drilling Program Methodology..... 12

 Table 2 - Drill Hole summary.....12

8. Costs Statement 13

9. References 13,14

10. Certificate of Author.....15

11. Appendices.....16

1. Introduction

During the month November 2014, Mount Logan Resources Ltd., a whole-owned subsidiary of Inventus Mining Corp. (TSX-V: IVS), initiated an exploration program to test the gold bearing conglomerates of the Huronian Supergroup that is exposed within the Pardo property with an object of gold exploration. The diamond-drilling program consisted of 5 holes, with a total of 503.3 meters.

Diamond drilling was completed by Summit Drilling Services Ltd., of Val Carron, Ontario, employing a Hydro Core drill rig. On site drilling supervision and core logging was done by; Winston Whymark, of Sudbury, Ontario; Wesley Whymark, of Sudbury Ontario. Core was split by Cody Jackson of Sudbury Ontario, All above working under contract of Mount Logan Resources, a wholly owned subsidiary to Inventus Mining Corp. (TSX.V: IVS). Core is stored at the company's core yard facility in Sudbury Ontario. All hole location maps and drill sections were prepared and plotted by the author.

2. Location, Access and Physiography

The Pardo project is located approximately 65 kilometers northeast of Sudbury, Ontario (Figure 1), in the Sudbury Mining Division, east-central Ontario. The property is primarily located in the center west of Pardo Township. Access to the property is excellent. From Sudbury, the Trans-Canada Highway 17 runs east to the town of Warren, from which paved Highway 539 runs north to the small community of River Valley. From there, paved Highway 539A and all-weather gravel Highway 805 runs north approximately 30 kilometers, crossing the western portion of the claim block. A Network of logging roads run east from Highway 805 providing additional access to the property. Approximately 10% of the claim block is outcrop, with the remainder a mixture of thin soil development through to thick fluvial sand plains and in places boulder till sheets of significant thickness. Vegetation is comprised of, in places, stands of virgin red and white pine, to second growth mixed forests of pine, spruce, and poplar. Infrastructure surrounding the project area is excellent. Water is plentiful, with numerous lakes on the property.



Figure 1 – Project location

3. Claim Summary of applied work

Township /Area	Claim Number	Recording Date	No of 16 Ha Units	Recorder Holder	Percent Held
McNish	4217750	2007-Sep-10	16	Mount Logan Resources	100%
McNish	4217746	2007-Sep-10	16	Mount Logan Resources	100%
Pardo	4262087	2011-Mar-24	14	Mount Logan Resources	100%
Pardo	4268004	2011-Nov-07	5	Mount Logan Resources	100%
TOTAL	4 Claims		51 units		

Table 1 – Claims descriptions

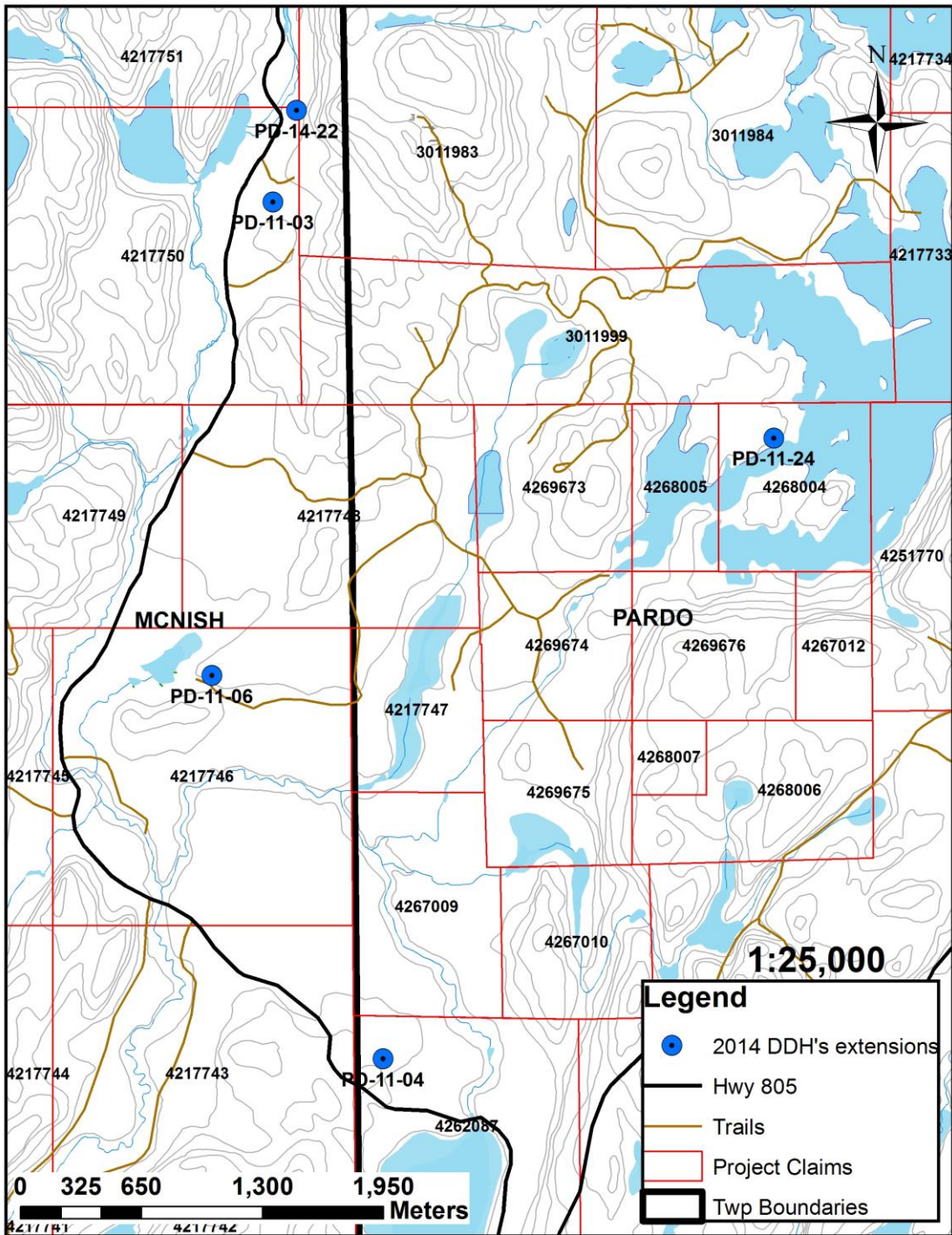


Figure 2 – Localization of the Claims in the Pardo Township

4. General geological setting

The regional geologic setting is described by Dressler (1979) as follows;

The area is underlain by Precambrian rocks, which are locally covered by Pleistocene and Recent unconsolidated sediments.

Early Precambrian metavolcanics, metasediments, granitic rocks, and mafic intrusive rocks are the oldest in the area. The metavolcanics and metasediments were intruded by granitic rocks, emplaced approximately 2500 m.y. ago (Van Schmus 1965, Fairburn et al 1960). Early Precambrian mafic dykes also intruded the metasediments and metavolcanics and are believed to be younger than the granitic intrusions.

Middle Precambrian rocks of the Huronian Supergroup unconformably overlie the older rocks. They were deposited between 2150 to 2400 m.y. ago (Van Schmus, 1976), an age bracket which corresponds to the Aphebian of C. H. Stockwell (1964). Rocks of the Mississagi Formation, the Gowganda Formation, and the Lorrain Formation occur in the area. The Mississagi Formation consists of conglomerate, sandstone, greywacke and argillite. The Gowganda Formation is comprised of greywacke, conglomerate, arkosic wacke, and subarkose. The Lorrain Formation is primarily comprised of quartzite, sandstone, and minor silty wacke. Nipissing intrusive rocks (approximately 2150 M.a. old), mostly gabbros, intrude all other older formations. A late Precambrian olivine diabase dyke outcrops in northwestern Janes Township, immediately south of Pardo Township. All of the above lithologies occur north of the Grenville Front Boundary Fault, in the Southern Structural Province of the Canadian Shield.

South of the Grenville Front Boundary Fault, in the Grenville Structural Province, rocks consist of biotite-plagioclase gneiss, biotite-hornblende-plagioclase gneiss, feldspathic gneiss, amphibolite, gabbro, anorthosite, migmatite, olivine diabase, and ultramafic rocks.

5. Property Geology

The Pardo property is predominantly underlain by rocks of the Huronian Supergroup, and specifically by conglomerates, sandstones, siltstones and greywackes of the Mississagi Formation up through the Gowganda and Lorrain Formations (Long, 1986; Clark, 1998). The Nipissing diabase and/or gabbro occur in northwest and west of the property in Clement, Macbeth, and McNish townships, and in the northeast of property in Vogt Township.

The northern two thirds of the property show a series of roughly north-south trending units of conglomerate and siltstone-sandstone. MacVeigh (1956) concluded the formations form a syncline trending north 20 degrees east and plunging 5 degrees to the southwest. While very few field observations of strikes and dips have been made, those few that have been observed confirm that the sediments do form narrow, north south trending localized basins, perhaps filling paleo scours in the Archean basement. The overall thickness of the Proterozoic sequence ranges from nil, where Archean

greywackes are observed in outcrop on surface, to in excess of 377 meters, as documented by the 1956 diamond drilling completed by Pickle Crow Gold Mines in the area south of Silver Lake.

Where observed on outcrops, the basal conglomerate is generally matrix supported, with a highly variable clast size ranging from a few centimeters to in excess of 1 meter. Sorting in the conglomerate is generally very poor, suggesting the basal conglomerate may have a glacial origin as opposed to a fluvial genesis. Clast lithologies are also highly variable, but in decreasing abundance are quartz, siltstone/shale, chert, metavolcanics, banded iron formation, granite, diorite, and lesser varied rock types.

Gold mineralization defined to date on the property is associated with basal pyrite quartz pebble conglomerate and/or pyrite-bearing polymictic conglomerate of the Mississagi Formation within 30 metres above the unconformity of Archean basement metasediments.

6. Previous Work

The first recorded work in the area is from 1932 (Bruce, 1932) when a small quartz vein was located immediately south of the current property boundary. The vein was stripped and sampled, but yielded very low gold values.

Between 1932 and 1956, there is no recorded work in the area. Between 1956 and 1957, much of the current property was held by Pickle Crow Gold Mines Limited, who were investigating the basal conglomerates for their uranium potential. That company completed two rounds of diamond drilling totaling 16 holes and 7,489 feet. Figure 4 illustrates the location of the Pickle Crow drill holes, as reported by MacVeigh (1956) and Thompson (1960). While the holes were routinely assayed for uranium, yielding only low and uneconomic values, only sporadic gold assays were reported, to a high of 0.055 opt over 10 feet.

From the 1974 to 1996, the area comprising the property was withdrawn from staking, as part of the Bear Island Indian Caution. No exploration activity was allowed or reported during that period, though a limited Cobalt Embayment wide sampling program by the Ontario Geological Survey in 1980 sampled quartz pebble conglomerates located on the south shore of Tee Lake, and returned anomalous gold values to 165 ppb Au.

In 1996, the property was staked by Vancouver based junior Tenajon Resources Corporation. In 1997, the company completed a two phase exploration program on the property, comprised of an initial 1:20,000 reconnaissance scale mapping and sampling program (see Figure 3), followed by a mechanized stripping and channel sampling program on the property. That work resulted in the discovery of two significant gold showings known as the "Northern" and Southern" Occurrences.

At the Northern Occurrence, stripping revealed a thin veneer of basal conglomerate resting unconformably on basement Archean greywackes. The basement rocks trend approximately east-west and are vertical, while the basal conglomerate is flat lying and "pancaked" onto the basement. In several locations, the conglomerate is strongly iron-oxide stained, and carries up to 3-5% fine disseminated pyrite in the matrix.

Grab values to 9.94 gpt gold were returned from the area, while channel samples returned a contiguous 12 metre interval grading 0.966 gpt gold.

At the Southern Occurrence, only the basal conglomerate is exposed, and again, pyritic portions returned grab samples to 2.47 gpt Au, and channel samples to 1.75 gpt Au over 3 metres.

During the same year, Tenajon also completed orientation humus sampling and scintillometer surveys over the North Showing, to determine the applicability of those two exploration techniques to identify additional gold occurrences. The scintillometer survey failed to detect any anomalous radioactivity associated with the gold occurrence. The humus sampling detected several anomalies immediately over the showing area, and 100 metres north and south of the showing, with individual sample tenures to 62 ppb Au.

In 1998, the property was optioned to Triex Resources Inc., who earned a 60% interest in the project by completing \$125,000 of exploration work during the 1998-1999 field seasons. That work included completion of a 40 kilometre cut-line grid over the area surrounding the "Northern Occurrence, followed by humus geochemistry and ground magnetic/VLF-EM and pole-dipole Induced Polarization surveys over the grid. Both the humus geochemical survey and the IP survey identified multiple anomalies warranting follow-up.

In July, 1999, Triex completed a program of power stripping and channel sampling over selected targets based on both IP and humus geochemistry responses. Of eight targets identified and sampled during the program, six returned anomalous gold mineralization over substantial widths. The IP survey appeared to have been extremely effective in defining high pyrite content portions of the conglomerate. Best results included an average grade of 451 ppb Au from twelve samples collected over a fifty metre exposure of the conglomerate, with high values to 2.2 gpt Au, and seven metres averaging 1.422 gpt Au, with a high individual metre channel carrying 7.03 gpt Au.

During 2000, Tenajon briefly re-assumed operatorship, and planned to assess the southern portions of the property for PGE potential. That work was never carried out. Due to depressed metal prices, the property was allowed to lapse in 2004, and was acquired by staking by the current property owners.

In July, 2006, Endurance Gold Corporation completed a single 18 metre diamond drill hole on Claim 3011983. The hole was designed to approximately duplicate a 1956 drill hole by Pickle Crow Gold Mines, which was exploring the area for uranium. That hole indicated that the basal conglomerate was in excess of 100 metres thick, and Endurance had planned a 150 metre diamond drill hole to provide a complete stratigraphic cut through the basal conglomerate, with corresponding continuous geochemistry. Unfortunately, due to extremely difficult overburden conditions, the hole failed to reach bedrock, and was abandoned after six days of drilling.

Also in July, 2006, Endurance Gold Corporation completed a 2500 metre mechanical stripping, washing, and channel sampling program at three locations, to evaluate IP anomalies generated as a result of the 1998 Triex work. That program was of a reconnaissance nature, and took place immediately off of the then property boundary. On receipt of results, Endurance staked 8 additional claims to cover the prospective stratigraphy. Results from the July, 2006 program included a channel

sample returning 3.52 gpt Au over 13 metres, with widespread anomalous gold values from the exposed basal conglomerate. In October, 2006, Endurance completed an additional 900 square metre stripping, washing and channel sampling program, as an extension to the July, 2006 program. That work has been filed for assessment (McIvor, 2006).

Also in 2006, Katrine Exploration and Development was contracted to cut a 20.96 line kilometre grid on the property. In late October, Larder geophysics Ltd. completed a detailed ground magnetometer and VLF-EM survey over that grid, and that work was subsequently filed for assessment (Ploeger, 2006).

In April, 2007, Endurance Gold Corporation completed a 17.5 line-kilometre Induced Polarization Survey over portions of the property (McIvor, 2007). That work successfully identified numerous strong I.P. chargeability highs, believed to coincide with significant pyrite concentrations within the basal conglomerate horizon, and with gold mineralization related spatially with the pyrite.

During the period May 15 through June 22, 2007, a 23.0 line-kilometre geological mapping and prospecting program was carried out on portions of the Pardo Property. (Cullen and McIvor, 2008). Mapping consisted of walking cut-grid lines, and noting all outcrop locations and lithologies, as well as relevant sulphide content. Systematic grab sampling was completed on outcrops containing any appreciable sulphide content. A total of 121 samples were collected during the program. The mapping program primarily encountered three basic lithological types. Most prevalent was a poorly sorted, matrix supported basal conglomerate believed to be a member of the Mississagi Formation. This lithology, the host to previously defined gold anomalies on the property, contained variable sulphide content, from nil to in excess of 5% in places. Typically, a higher sulphide content, and increase in the percentage of quartz clasts in the conglomerate, are empirically related to significantly anomalous gold values, and these parameters were noted during mapping. Also encountered during the program were stratigraphically higher sequences of sandstone/quartzite, which typically were unmineralized. The third lithological type encountered during mapping was a siltstone-argillite, believed to be Archean in age and typically located immediately beneath the basal conglomerates. In numerous instances, the stratigraphic relationships between the three units were unclear in the field, due to insufficient vertical outcrop exposure. The overlying sandstone/quartzite unit was often similar in appearance to the underlying siltstone/argillite unit, and differentiating the two was difficult. As such, at many locations on the enclosed map, the two units are described but undifferentiated as to stratigraphic position and age.

For the most part, the encountered sedimentary strata were flat lying to very gently dipping in both east and west directions, suggesting a gently undulating paleotopography.

Of the 121 samples collected during the program, 28 returned significantly anomalous gold values in excess of 100 ppb. Of those 28 samples, 6 returned gold values of between 100 and 500 ppb, and 1 sample returned a value in excess of 1,000 ppb (Sample 343555, with 1,880 ppb Au). Most all the significantly anomalous gold values were from pyritic conglomerate, though one sample of quartzite (Sample 343732) in the Tee Lake area returned a gold assay of 528 ppb Au.

During the period July 15 through August 15, 2007, a 56 hole, 653 metre diamond drilling program was carried out on portions of the Pardo Property. All 56 holes were drilled on Claim 4202512, to test strong Induced Polarization chargeability anomalies in the immediate vicinity of surface channel sample results of 3.52 gpt Au over 13 metres, in the Trench 2 area of the property. All holes were vertical, and designed to drill through the basal conglomerate horizon into Archean basement metasediments. The close spacing of the holes was designed to provide detailed information regarding the distribution of gold mineralization within the conglomerate in the third (vertical) dimension, and allow correlation between surface channel sample results and grade in drill core.

Most all holes drilled in the Trench 2 area encountered variable thicknesses of the targeted pyritic quartz pebble dominant basal conglomerate, before penetrating the underlying Archean metasedimentary stratigraphy (argillites-siltstones). In certain lower lying areas (Holes 15, 43 and 56) the drill holes collared into basement rocks, with no conglomerate horizon present.

During the period May 25 through July 07, 2008, a 41 hole, 979.5 metre diamond drilling program was carried out on portions of the Pardo Property, located 65 kilometres northeast of Sudbury, in Pardo and Clement Townships, Sudbury Mining Division. The holes were drilled on claims numbered 3009440 (Holes 70, 72 through 78, 80 through 83), 4202512 (Holes 11 through 29), 4202513 (Holes 09,10) and 4202514 (Holes 01 through 08), and were designed to test a series of strong IP chargeability anomalies and/or strong surface gold values in the target conglomerate horizon over a large portion of the property, as a follow up to the 2007 diamond drilling program.

In 2009, Mount Logan Resources Ltd., a subsidiary of Ginguro Exploration Inc., carried out a reconnaissance mapping and prospecting program collecting 370 grab samples that contain up to 72.2 gpt Au. This program generally identified the distribution of major rock types exposed in the property, and confirmed that basal pyrite quartz pebble conglomerates of the Mississagi Formation locally contain appreciable gold mineralization. In addition, five 500-pound bulk samples were collected using controlled explosives. These samples were tested at a metallurgical facility, indicating an average head grade of 2.0 gpt and 94% gold could be recovered (Ginguro Exploration Inc. April 11, 2010 press release). The result of this test is positive.

A 51 km grid was also made by Mount Logan in 2009, which was investigated by a ground magnetometer survey. Magnetic highs were noted in the northwestern portion of the surveyed grid, which is interpreted to be resulted from the Nipissing diabase and/or gabbro dykes. However, no magnetic anomalies related to basal conglomerates were picked up. An IP survey on the same grid was carried out, and identified 35 anomalies. Some of these IP targets were drilled by a diamond drilling program during July 29 through August 20, 2009, which consisted of 17 holes totaling 742 meters. Significant gold mineralization intervals were intersected in 14 holes, and a large gold nugget was recovered at the depth of 41.46 meters from borehole PD-09-09. The drilling program led to realizing that some of the IP anomalies reflect structures or diabase dykes.

In 2010 from May 10th to October 7th, Mount Logan Resources Ltd., a subsidiary of Ginguro Exploration Inc., carried out a detailed geological mapping program supported by an extensive reconnaissance geological mapping and prospecting to better understand the stratigraphy, sedimentology and structures of the Huronian Supergroup that exposes within the Pardo property with an objective of definition of drilling targets. The mapping program covered all existing grid lines, and a new 77.33 km grid, to help provide a series of geological maps. A drilling program consisting of 139 diamond drill holes totaling 4772.67 meters was also completed.

In 2011 Mount Logan Resources Ltd., a subsidiary of Ginguro Exploration Inc. carried out a detailed geological mapping program supported by an extensive reconnaissance geological mapping and prospecting to better understand the stratigraphy, sedimentology and structures of the Huronian Supergroup that exposes within the Pardo property with an objective of definition of future drilling targets. During the same time a drilling program of 24 diamond drill holes totaling 4918.92m, was on going to help accompany the mapping. Late November the first silver lake showing was discovered using a scintilometer. This discovery initiated a diamond drill hole on the west side of silver lake (PD-11-24).

In April 2012 Mount Logan Resources made an agreement with Endurance Gold were the claims (4201291, 4201292, 4202511, 4202512, 4202513, 4211782, 1234841, 1234842, 3009440, 3009441, 3011982, 3011983, 3011984, 3011999, 4202510, and 4202514) now are 100% Mount Logan.

Between the months of May to November 2012, Mount Logan began a surface sampling program using a RS-230 BGO Super-SPEC Handheld Gamma-Ray Spectrometer which helped discover what's known as the silver lake zone. A total of 226 grab samples from the Pardo Project were collected.

During the spring of 2012 Weatherford International was contracted to survey a selection of diamond drill holes utilizing particular geophysical techniques to determine various geological parameters. This examination was carried out to verify the presence of cross bedded strata, the nature of uraniferous locations, and the lithological correlation between diamond drill hole intersections. The diamond drill holes selected for such geophysical investigations were: PD10-01, PD10-08, PD10-09, PD11-04, PD11-06 and PD11-10.

On September 5th 2012 a diamond drilling campaign began which was completed on October 31 2012. A total of 67 diamond drill holes totaling 1507.32m was carried out over three key area; the mid-fan zone, the western reef zone, as well the expansion of the trench 2 area.

After the drill program was complete, the stripping and trenching of the silver lake zone began. A total of 21 channel samples were collected and had very positive results which concluded the 2012 season.

During the months of January – May 2013 an analytical and selected detailed logging program of 2007-2010 drill core occurred in Sudbury at Mount Logan’s core shack. A total of 236 samples were collected from previously logged 2007-2010 core.

As well 59 drill holes were logged in detailed by Peter Van Walraven of Sudbury Ontario, under the supervision of Dr. Lawrence Minter of Cape Town South Africa. Detailed logging of the lower 20 meter portions of the Mississagi formation was completed to accompany the start of basin analysis.

Later in May 2013 – October 2013, prospecting and detailed mapping began in the southern portion of the Pardo Project, which then lead to the historic discovery’s of Eastern Reef and the “007” zone. A total of 728 samples were collected in the form of channel samples using a diamond saw.

7. 2014 Diamond Drilling Program Methodology

During the month of November of 2014, Mount Logan Resources completed a 503.3 meter drill program on the Pardo project. The program was designed to deepen Holes PD-11-03, PD-11-04, PD-11-06, and PD-11-24 as well drill a new hole PD-14-22 See figure 2. The purpose of deepening the holes was to test the basal quartz pebble conglomerate of the Matinenda Formation, which the holes did not intersect when first drilled. It was originally thought that only the Mississagi conglomerates were of economic interest. However recent geological investigation has revealed the Matinenda Fm. conglomerates to also have economic interests.

Hole ID	Easting	Northing	CLAIM #	TOWNSHIP	Dip	Depth	EXT Length (m)	Total samples taken
PD-11-03Ext	556182	5182970	4217750	McNish	-90	202.01	99.8	42
PD-11-04Ext	556178	5182994	4262087	Pardo	-90	539.5	70.5	54
PD-11-06Ext	556166	5182977	4217746	McNish	-90	544	63	0
PD-11-24Ext	556184	5182956	4268004	Pardo	-90	374	116	18
PD-14-22	556195	5182877	4217750	McNish	-90	154	154	31
						Total	503.3m	145

Table 2 – Drill Hole Summary

8. Costs Statement

The total costs of \$116,050.36 incurred on the claims. The costs are broken down in the table below.

Type of expense	Cost per unit	Total cost
Drilling (503.3m)	\$130.00 per/m	\$65000.00
Drilling materials		\$3103.71
Analytical (145 samples)	\$17.00 per sample	\$2465.00
Supervision/core logging (20 days)	\$300.00 per/day	\$6000.00
Cutting and sampling (5 days)	\$150.00 per/day	\$750.00
Core shack rental (12months for 2014)	\$3107.50 per/month	\$37290.00
Truck rental	\$1250.00 per/month	\$1441.65

9. References

Bruce, E.L. 1932: Geology of the Townships of Janes, McNish, Pardo and Dana; Ontario Department of Mines Volume 41, Part 4, p.1-28, Accompanied by map 41f, scale 1 inch to ½ mile.

Clark, J.G. 1998: Report on 1998 Geophysics and Humus Sampling, Pardo Property; Triex Resources Inc. Internal Report.

Cullen, D. 1997: Report on 1997 Prospecting, Geological Mapping, Stripping and Channel Sampling on the Pardo Property; Tenajon Resources Corporation Internal Report.

Cullen, D. and Mclvor, D.F. 2008: Report on the Summer 2007 Mapping and Prospecting Program on the Pardo Property, Pardo and Clement Townships, Sudbury Mining Division, Ontario; Endurance Gold Corporation Assessment Report (Number and Acceptance Pending).

Dressler, Burkhardt O. 1979: Geology of McNish and Janes Townships, District of Sudbury; Ontario Geological Survey Report 191, 91 p., Accompanied by Map 2425, scale 1:31,680.

Fairbairn, H.W. et al. 1960: Mineral and Rock Ages at Sudbury-Blind River, Ontario; Proceedings of the Geological Association of Canada, Volume 12, p. 41-66.

Long, D.G.F. 1981: The Sedimentary Framework of Placer Gold Concentrations in Basal Huronian Strata of the Cobalt Embayment; in Summary of Field Work, 1981, by the Ontario Geological Survey, OGS Miscellaneous Paper 100, ed. by John Wood et al.

MacVeigh, E.A. 1956: Report on the Geology of the Pickle Crow Gold Mines Property, Pardo Township, Temagami Area, Ontario; Pickle Crow Gold Mines Internal Report.

Mclvor, D.F. 2006: The Results of a July, 2006 Diamond Drilling Program in Pardo Township, Sudbury Mining Division, Ontario; Endurance Gold Corporation Assessment Report 2.33271.

Mclvor, D.F. 2006: The Results of an October, 2006 Mechanized Stripping, Washing and Channel Sampling Program on Claim 4202512 in Clement Township, Pardo Property, Sudbury Mining Division, Ontario; Endurance Gold Corporation Assessment Report W0670.01904.

Mclvor, D.F. 2007: The Results of an April 2007 Induced Polarization Geophysical Survey on the Pardo Property, Pardo and Clement Townships, Sudbury Mining Division, Ontario; Endurance Gold Corporation Assessment Report (Pending Acceptance) W0770.02268.

Mclvor, D. F. 2008: Report on the October-November 2007 Prospecting and Sampling Program on the Pardo Property, Pardo and Clement Townships, Sudbury Mining Division, Ontario; Endurance Gold Corporation Assessment Report W0870.00796.

Ontario Geological Survey 1975: Map 2361, Sudbury-Cobalt Geological Compilation 27.

Ploeger, C.J. 2006: Magnetometer and VLF Surveys Over the Pardo Gold Project, Pardo and Clement Townships, Ontario; Larder Geophysics Ltd. Assessment Report Q0670.01901.

Stockwell, C.H. 1964: Fourth Report on Structural Provinces, Orogenies and Time Classification of the Canadian Precambrian Shield; p.1-21, in Age Determinations and Geological Studies, Part II, Geological Studies, Geological Survey of Canada, Paper 64-17, 29 p.

Thomson, J.E. 1960: Uranium and Thorium Deposits at the Base of the Huronian System in the District of Sudbury; Ontario Department of Mines Geological Report No.

Van Schmus, W.R. 1965: The Geochronology of the Blind River-Bruce Mines Area, Ontario, Canada; Journal of Geology, Volume 73, Number 5, p. 755-780.

10. Certificate of Author

- 1) I am currently hired as Mining/Geological Technician for Inventus Mining Corp.
- 2) I graduated from Cambrian College with a Diploma in Mining/Geological Engineering Technology.
- 3) I have worked for Mount Logan Resources Ltd. Since 2009.
- 4) I am not aware of any material fact or material change with respect to the subject matter of this report, the omission to disclose which makes this report misleading.
- 5) I am not independent of Inventus Mining Corp., applying all tests in section 1.5 of NI43-101. I am under contract as Mining/Geological technician to the company.
- 6) As of the date of this certificate, and to the best of my knowledge, information and belief, the Technical Report contains all scientific and technical information related to the program here-in described.

Dated

Signed:

Winston Whymark

11. Appendices

A1) 2014 drill logs

A2) AGAT Labs assay certificates

A3) Sections of holes PD-11-03Ext, PD-11-04Ext, PD-11-06Ext, PD-11-24Ext, PD-14-22

		Percentiles				
		95.00	84	50	16	5
A1	Insert Value	4.60	4.25	3.7	3.4	3.05
	Mean pebble size	3.78				
	Sorting	0.45				
	Packing	Count		Packing %		
100.00			57%			
		Percentiles				
		95.00	84	50	16	5
A2	Insert Value	4.90	4.45	3.9	3.45	2.85
	Mean pebble size	3.93				
	Sorting	0.56				
	Packing	Count		Packing %		
100.00			59%			
		Percentiles				
		95.00	84	50	16	5
A3	Insert Value					
	Mean pebble size	0.00				
	Sorting	0.00				
	Packing	Count		Packing %		
100.00			0%			
		Percentiles				
		95.00	84	50	16	5
A4	Insert Value					
	Mean pebble size	0.00				
	Sorting	0.00				
	Packing	Count		Packing %		
100.00			0%			
		Percentiles				
		95.00	84	50	16	5
A5	Insert Value					
	Mean pebble size	0.00				
	Sorting	0.00				
	Packing	Count		Packing %		
100.00			0%			

A6		Percentiles					
		95.00	84	50	16	5	
		Insert Value					
		Mean pebble size	0.00				
		Sorting	0.00				
Packing		Count		Packing %			
		100.00		0%			
A7		Percentiles					
		95.00	84	50	16	5	
		Insert Value					
		Mean pebble size	0.00				
		Sorting	0.00				
Packing		Count		Packing %			
		100.00		0%			
A8		Percentiles					
		95.00	84	50	16	5	
		Insert Value					
		Mean pebble size	0.00				
		Sorting	0.00				
Packing		Count		Packing %			
		100.00		0%			
A9		Percentiles					
		95.00	84	50	16	5	
		Insert Value					
		Mean pebble size	0.00				
		Sorting	0.00				
Packing		Count		Packing %			
		100.00		0%			
A10		Percentiles					
		95.00	84	50	16	5	
		Insert Value					
		Mean pebble size	0.00				
		Sorting	0.00				
Packing		Count		Packing %			
		100.00		0%			

		Percentiles				
		95.00	84	50	16	5
A11	Insert Value					
	Mean pebble size	0.00				
	Sorting	0.00				
	Packing	Count		Packing %		
100.00			0%			
		Percentiles				
		95.00	84	50	16	5
A12	Insert Value					
	Mean pebble size	0.00				
	Sorting	0.00				
	Packing	Count		Packing %		
100.00			0%			
		Percentiles				
		95.00	84	50	16	5
A13	Insert Value					
	Mean pebble size	0.00				
	Sorting	0.00				
	Packing	Count		Packing %		
100.00			0%			
		Percentiles				
		95.00	84	50	16	5
A14	Insert Value					
	Mean pebble size	0.00				
	Sorting	0.00				
	Packing	Count		Packing %		
100.00			0%			
		Percentiles				
		95.00	84	50	16	5
A15	Insert Value					
	Mean pebble size	0.00				
	Sorting	0.00				
	Packing	Count		Packing %		
100.00			0%			

		Percentiles				
		95.00	84	50	16	5
A1	Insert Value	4.50	4.1	3.65	3.3	2.85
	Mean pebble size	3.68				
	Sorting	0.45				
	Packing	Count		Packing %		
100.00			38%			
		Percentiles				
		95.00	84	50	16	5
A2	Insert Value	5.20	4.65	3.95	3.3	2.7
	Mean pebble size	3.97				
	Sorting	0.72				
	Packing	Count		Packing %		
100.00			48%			
		Percentiles				
		95.00	84	50	16	5
A3	Insert Value	4.50	4	3.35	3	2.5
	Mean pebble size	3.45				
	Sorting	0.55				
	Packing	Count		Packing %		
100.00			43%			
		Percentiles				
		95.00	84	50	16	5
A4	Insert Value	4.85	4.35	3.7	3.1	2.5
	Mean pebble size	3.72				
	Sorting	0.67				
	Packing	Count		Packing %		
100.00			41%			
		Percentiles				
		95.00	84	50	16	5
A5	Insert Value	4.00	3.6	3.2	3.05	2.75
	Mean pebble size	3.28				
	Sorting	0.33				
	Packing	Count		Packing %		
100.00			45%			



CLIENT NAME: MOUNT LOGAN RESOURCES LTD./GINGURO
101-957 CAMBRIAN HEIGHTS DR.
SUDBURY, ON P3C5S5
(705) 222-8800

ATTENTION TO: WINSTON WHYMARK

PROJECT: PARDO

AGAT WORK ORDER: 14U914777

SOLID ANALYSIS REVIEWED BY: Yufei Chen, Lab Co-ordinator

DATE REPORTED: Nov 25, 2014

PAGES (INCLUDING COVER): 16

Should you require any information regarding this analysis please contact your client services representative at (905) 501-9998

*NOTES

All samples are stored at no charge for 90 days. Please contact the lab if you require additional sample storage time.



Certificate of Analysis

AGAT WORK ORDER: 14U914777

PROJECT: PARDO

5623 McADAM ROAD
MISSISSAUGA, ONTARIO
CANADA L4Z 1N9
TEL (905)501-9998
FAX (905)501-0589
<http://www.agatlabs.com>

CLIENT NAME: MOUNT LOGAN RESOURCES LTD./GINGURO

ATTENTION TO: WINSTON WHYMARK

(201-073) Aqua Regia Digest - Metals Package, ICP-OES finish

DATE SAMPLED: Nov 11, 2014	DATE RECEIVED: Nov 11, 2014		DATE REPORTED: Nov 25, 2014		SAMPLE TYPE: Drill Core									
Analyte:	Ag	Al	As	B	Ba	Be	Bi	Ca	Cd	Ce	Co	Cr	Cu	Fe
Unit:	ppm	%	ppm	ppm	ppm	ppm	ppm	%	ppm	ppm	ppm	ppm	ppm	%
RDL:	0.2	0.01	1	5	1	0.5	1	0.01	0.5	1	0.5	0.5	0.5	0.01
E5158068 (6064721)	<0.2	1.46	<1	5	98	<0.5	<1	0.13	<0.5	126	7.3	21.1	2.8	2.28
E5158069 (6064722)	<0.2	1.29	<1	5	89	<0.5	<1	0.50	<0.5	61	8.0	48.9	17.6	2.17
E5158070 (6064723)	<0.2	1.33	<1	5	125	<0.5	<1	0.21	<0.5	38	6.0	41.9	2.7	2.01
E5158071 (6064724)	<0.2	1.32	<1	5	123	<0.5	<1	0.41	<0.5	40	6.2	28.0	2.4	2.00
E5158072 (6064725)	<0.2	1.45	2	5	133	0.5	<1	0.19	<0.5	71	7.1	31.7	1.5	2.11
E5158073 (6064726)	<0.2	1.63	<1	5	106	<0.5	<1	0.16	<0.5	19	8.4	44.7	5.1	2.59
E5158074 (6064727)	<0.2	1.46	<1	5	65	<0.5	<1	1.12	<0.5	66	8.9	78.2	7.6	2.46
E5158075 (6064728)	<0.2	0.92	<1	5	44	<0.5	<1	1.37	<0.5	71	5.9	52.2	8.7	1.58
E5158076 (6064729)	<0.2	4.04	2	5	122	<0.5	<1	0.29	<0.5	53	27.9	74.5	18.8	6.22
E5158077 (6064730)	<0.2	3.48	4	5	212	0.6	<1	0.71	<0.5	44	40.6	73.9	382	5.62
E5158078 (6064731)	<0.2	3.78	<1	5	122	<0.5	<1	0.26	<0.5	31	27.0	89.9	41.2	5.90
E5158079 (6064732)	<0.2	2.70	<1	5	130	<0.5	15	0.70	<0.5	65	15.4	72.5	12.8	4.38
E5158080 (6064733)	<0.2	2.32	<1	5	80	<0.5	<1	1.22	<0.5	53	25.0	98.1	47.1	4.18
E5158081 (6064734)	<0.2	2.34	<1	5	103	<0.5	<1	0.71	<0.5	49	17.0	67.4	30.2	3.96
E5158082 (6064735)	<0.2	1.91	<1	5	81	0.5	<1	0.69	0.5	85	26.0	109	57.9	3.54
E5158084 (6064736)	<0.2	0.92	<1	5	70	<0.5	<1	0.44	<0.5	60	7.1	69.7	15.3	1.61
E5158085 (6064737)	<0.2	1.54	<1	5	171	0.6	<1	0.24	<0.5	115	7.4	41.5	6.1	2.20
E5158086 (6064738)	<0.2	1.59	<1	5	167	0.6	<1	0.30	<0.5	74	9.6	29.3	11.3	2.39
E5158087 (6064739)	2.3	3.04	88	5	104	<0.5	5	2.02	1.2	36	180	181	3750	7.14
E5158088 (6064740)	<0.2	1.58	<1	5	153	0.7	<1	0.35	<0.5	74	10.3	39.3	12.0	2.43
E5158089 (6064741)	<0.2	1.75	<1	5	174	0.7	<1	0.36	<0.5	75	10.0	34.6	12.7	2.66
E5158090 (6064742)	<0.2	1.56	<1	5	164	0.7	<1	0.41	<0.5	97	10.8	41.1	10.6	2.36
E5158091 (6064743)	<0.2	1.34	<1	5	145	0.6	<1	0.38	<0.5	57	9.7	37.9	7.8	2.06
E5158092 (6064744)	<0.2	1.65	<1	5	174	0.7	<1	0.53	<0.5	77	9.2	33.5	5.3	2.38
E5158093 (6064745)	<0.2	1.74	<1	5	170	0.7	<1	0.40	<0.5	61	10.9	37.6	9.4	2.62
E5158094 (6064746)	<0.2	1.82	<1	5	170	0.7	<1	0.28	<0.5	44	12.2	25.0	7.5	2.77
E5158095 (6064747)	<0.2	1.86	<1	5	188	0.7	<1	0.32	<0.5	78	13.0	47.9	14.9	2.92
E5158096 (6064748)	<0.2	1.88	<1	5	170	0.5	<1	0.50	<0.5	74	14.6	42.3	16.8	2.96
E5158097 (6064749)	<0.2	1.85	<1	5	160	0.7	<1	0.52	<0.5	105	19.5	46.5	27.3	3.06
E5158098 (6064750)	<0.2	1.92	<1	5	166	0.6	2	0.59	<0.5	97	23.1	39.5	50.8	3.26
E5158099 (6064751)	<0.2	2.46	2	5	202	0.7	<1	0.39	<0.5	34	24.5	96.9	43.5	3.93
E5158100 (6064752)	<0.2	2.16	10	5	186	0.6	1	0.53	<0.5	101	24.7	46.5	47.5	3.73

Certified By:



Certificate of Analysis

AGAT WORK ORDER: 14U914777

PROJECT: PARDO

5623 McADAM ROAD
MISSISSAUGA, ONTARIO
CANADA L4Z 1N9
TEL (905)501-9998
FAX (905)501-0589
<http://www.agatlabs.com>

CLIENT NAME: MOUNT LOGAN RESOURCES LTD./GINGURO

ATTENTION TO: WINSTON WHYMARK

(201-073) Aqua Regia Digest - Metals Package, ICP-OES finish

DATE SAMPLED: Nov 11, 2014	DATE RECEIVED: Nov 11, 2014		DATE REPORTED: Nov 25, 2014		SAMPLE TYPE: Drill Core									
Analyte:	Ag	Al	As	B	Ba	Be	Bi	Ca	Cd	Ce	Co	Cr	Cu	Fe
Unit:	ppm	%	ppm	ppm	ppm	ppm	ppm	%	ppm	ppm	ppm	ppm	ppm	%
RDL:	0.2	0.01	1	5	1	0.5	1	0.01	0.5	1	0.5	0.5	0.5	0.01
E5158101 (6064753)	<0.2	2.10	<1	<5	98	<0.5	<1	0.68	<0.5	110	16.5	58.4	54.5	3.27
E5158102 (6064754)	<0.2	5.08	<1	<5	232	1.4	<1	0.38	0.5	57	28.5	230	34.9	6.43
E5158103 (6064755)	<0.2	2.72	<1	<5	84	0.6	<1	0.24	<0.5	75	18.7	47.0	44.9	3.95
E5158104 (6064756)	<0.2	6.89	<1	<5	58	1.0	<1	0.34	0.9	42	43.6	130	31.0	7.91
E5158105 (6064757)	<0.2	5.32	<1	<5	62	1.0	<1	0.47	0.6	37	40.4	61.7	56.7	6.46
E5158106 (6064758)	0.6	3.79	<1	<5	80	1.2	<1	1.95	0.5	39	32.9	64.0	144	4.88
E5158108 (6064759)	<0.2	0.23	<1	<5	8	<0.5	<1	0.03	<0.5	8	1.1	96.1	3.9	0.32
E5158109 (6064760)	<0.2	2.77	4	<5	70	2.0	<1	0.96	<0.5	11	25.5	84.3	41.9	3.72
E5158110 (6064761)	<0.2	6.21	<1	<5	67	2.3	<1	1.15	<0.5	45	41.4	53.9	63.6	6.78
E5158111 (6064762)	<0.2	5.43	<1	<5	31	1.2	<1	0.81	<0.5	24	33.8	51.6	79.8	6.11
E5158112 (6064763)	<0.2	4.02	1	<5	7	0.6	<1	0.18	<0.5	46	48.3	65.3	27.6	5.31
E5158113 (6064764)	<0.2	3.52	9	<5	29	0.6	<1	0.14	<0.5	69	132	59.8	22.1	5.90
E5158114 (6064765)	<0.2	3.32	3	<5	109	1.0	<1	0.18	<0.5	112	45.4	36.1	30.8	5.01
E5158115 (6064766)	<0.2	2.47	7	<5	50	<0.5	<1	0.44	<0.5	77	42.7	39.8	48.2	4.09
E5158116 (6064767)	<0.2	3.06	7	<5	75	0.6	<1	0.39	<0.5	75	31.3	167	184	4.75

Certified By:



Certificate of Analysis

AGAT WORK ORDER: 14U914777

PROJECT: PARDO

5623 McADAM ROAD
MISSISSAUGA, ONTARIO
CANADA L4Z 1N9
TEL (905)501-9998
FAX (905)501-0589
<http://www.agatlabs.com>

CLIENT NAME: MOUNT LOGAN RESOURCES LTD./GINGURO

ATTENTION TO: WINSTON WHYMARK

(201-073) Aqua Regia Digest - Metals Package, ICP-OES finish

DATE SAMPLED: Nov 11, 2014	DATE RECEIVED: Nov 11, 2014						DATE REPORTED: Nov 25, 2014					SAMPLE TYPE: Drill Core			
Analyte: Unit: RDL:	Ga ppm	Hg ppm	In ppm	K %	La ppm	Li ppm	Mg %	Mn ppm	Mo ppm	Na %	Ni ppm	P ppm	Pb ppm	Rb ppm	
Sample ID (AGAT ID)	5	1	1	0.01	1	1	0.01	1	0.5	0.01	0.5	10	0.5	10	
E5158068 (6064721)	<5	<1	<1	0.60	80	17	1.11	280	1.5	0.01	12.0	569	<0.5	82	
E5158069 (6064722)	<5	<1	<1	0.49	37	14	1.01	302	1.4	0.04	9.5	387	3.5	58	
E5158070 (6064723)	<5	<1	<1	0.70	23	15	0.98	230	1.0	0.04	9.0	534	<0.5	87	
E5158071 (6064724)	<5	<1	<1	0.71	25	16	1.00	259	1.1	0.03	8.9	779	<0.5	86	
E5158072 (6064725)	<5	<1	<1	0.76	45	17	1.11	257	0.7	0.03	9.0	625	<0.5	99	
E5158073 (6064726)	<5	<1	<1	0.68	12	19	1.37	320	1.7	0.04	10.3	712	<0.5	85	
E5158074 (6064727)	<5	<1	1	0.57	41	17	1.25	449	1.5	0.09	10.1	2420	5.1	57	
E5158075 (6064728)	<5	<1	1	0.28	44	10	0.83	368	0.8	0.08	4.6	1570	6.5	22	
E5158076 (6064729)	12	<1	<1	1.08	31	44	3.91	1080	2.9	0.04	19.1	1360	8.6	158	
E5158077 (6064730)	9	<1	<1	1.56	25	42	3.37	924	3.2	0.04	24.3	2280	5.3	227	
E5158078 (6064731)	9	<1	<1	0.97	20	40	3.72	1030	3.4	0.04	32.9	1130	3.9	135	
E5158079 (6064732)	<5	<1	<1	1.20	34	33	2.56	724	2.3	0.06	21.2	3220	18.2	169	
E5158080 (6064733)	<5	<1	3	0.73	32	26	2.28	768	2.1	0.06	26.2	1870	71.9	86	
E5158081 (6064734)	5	<1	<1	0.92	30	27	2.22	653	2.4	0.08	18.7	2600	4.9	101	
E5158082 (6064735)	9	<1	<1	0.79	49	23	1.81	644	2.1	0.08	26.0	4070	68.2	110	
E5158084 (6064736)	<5	<1	2	0.49	37	11	0.78	215	1.6	0.07	7.6	805	29.3	50	
E5158085 (6064737)	<5	<1	<1	1.01	69	19	1.16	255	1.9	0.04	8.6	1210	<0.5	128	
E5158086 (6064738)	<5	<1	<1	1.09	44	19	1.25	281	0.9	0.04	10.2	1420	1.3	145	
E5158087 (6064739)	8	<1	1	0.41	20	15	2.41	610	7.7	0.10	2950	1280	5.4	49	
E5158088 (6064740)	<5	<1	<1	1.15	40	20	1.30	305	2.9	0.04	11.4	992	5.0	157	
E5158089 (6064741)	<5	<1	2	1.28	38	22	1.43	300	1.4	0.04	12.4	1220	3.7	159	
E5158090 (6064742)	<5	<1	1	1.09	53	20	1.28	311	1.5	0.05	11.5	1250	1.8	137	
E5158091 (6064743)	<5	<1	<1	0.97	29	17	1.10	262	1.1	0.04	9.6	1190	4.6	118	
E5158092 (6064744)	<5	<1	<1	1.17	38	21	1.37	315	1.1	0.04	8.9	2230	3.2	148	
E5158093 (6064745)	<5	<1	<1	1.20	31	23	1.53	339	1.7	0.05	10.6	1590	6.3	138	
E5158094 (6064746)	<5	<1	2	1.37	25	24	1.66	343	1.0	0.03	11.5	944	10.9	183	
E5158095 (6064747)	<5	<1	<1	1.35	46	23	1.68	374	1.7	0.06	11.7	666	3.7	154	
E5158096 (6064748)	<5	<1	<1	1.18	45	23	1.73	411	1.7	0.05	10.7	697	4.2	121	
E5158097 (6064749)	<5	<1	<1	1.07	59	21	1.74	385	1.6	0.08	14.0	1380	10.5	101	
E5158098 (6064750)	<5	<1	2	1.20	56	21	1.86	431	1.5	0.07	17.3	1100	14.0	119	
E5158099 (6064751)	<5	<1	<1	1.48	20	29	2.43	518	2.0	0.03	32.0	850	6.7	178	
E5158100 (6064752)	<5	<1	1	1.22	60	26	2.13	516	1.7	0.04	15.7	444	8.8	131	

Certified By:



Certificate of Analysis

AGAT WORK ORDER: 14U914777

PROJECT: PARDO

5623 McADAM ROAD
MISSISSAUGA, ONTARIO
CANADA L4Z 1N9
TEL (905)501-9998
FAX (905)501-0589
<http://www.agatlabs.com>

CLIENT NAME: MOUNT LOGAN RESOURCES LTD./GINGURO

ATTENTION TO: WINSTON WHYMARK

(201-073) Aqua Regia Digest - Metals Package, ICP-OES finish

DATE SAMPLED: Nov 11, 2014	DATE RECEIVED: Nov 11, 2014							DATE REPORTED: Nov 25, 2014				SAMPLE TYPE: Drill Core			
Analyte:	Ga	Hg	In	K	La	Li	Mg	Mn	Mo	Na	Ni	P	Pb	Rb	
Unit:	ppm	ppm	ppm	%	ppm	ppm	%	ppm	ppm	%	ppm	ppm	ppm	ppm	
Sample ID (AGAT ID)	RDL:	5	1	1	0.01	1	1	0.01	1	0.5	0.01	0.5	10	0.5	10
E5158101 (6064753)		<5	<1	<1	0.69	61	24	2.21	559	1.6	0.06	25.6	1690	16.1	60
E5158102 (6064754)		17	<1	<1	1.95	33	60	5.56	1250	1.0	0.02	94.4	1460	6.0	247
E5158103 (6064755)		<5	<1	<1	0.51	43	31	3.05	682	1.9	0.05	37.0	651	5.6	49
E5158104 (6064756)		27	<1	<1	0.54	23	75	8.00	1940	2.8	<0.01	35.7	1390	30.1	68
E5158105 (6064757)		17	<1	<1	0.62	19	61	6.47	1490	2.9	<0.01	23.3	1830	93.9	79
E5158106 (6064758)		10	<1	<1	0.98	17	44	5.07	1100	2.0	<0.01	18.3	2730	176	146
E5158108 (6064759)		<5	<1	<1	0.07	4	1	0.12	28	1.2	0.02	4.1	38	1.4	<10
E5158109 (6064760)		7	<1	<1	1.13	5	35	4.14	711	2.8	<0.01	13.2	458	29.0	206
E5158110 (6064761)		20	<1	<1	1.17	26	60	8.73	1550	2.3	<0.01	15.7	1250	7.4	220
E5158111 (6064762)		18	<1	<1	0.51	15	51	7.37	1400	3.2	<0.01	12.5	580	2.8	88
E5158112 (6064763)		10	<1	<1	0.07	30	41	5.06	1090	3.1	<0.01	10.7	698	0.7	<10
E5158113 (6064764)		8	<1	<1	0.18	43	40	4.21	931	4.2	0.03	13.5	458	1.7	19
E5158114 (6064765)		8	<1	<1	0.58	67	37	3.67	805	2.6	0.05	12.0	669	2.0	72
E5158115 (6064766)		<5	<1	<1	0.28	52	30	2.72	656	2.0	0.10	12.7	498	2.3	29
E5158116 (6064767)		6	<1	2	0.44	49	37	3.34	796	2.1	0.08	48.2	700	1.2	45

Certified By:



Certificate of Analysis

AGAT WORK ORDER: 14U914777

PROJECT: PARDO

5623 McADAM ROAD
MISSISSAUGA, ONTARIO
CANADA L4Z 1N9
TEL (905)501-9998
FAX (905)501-0589
<http://www.agatlabs.com>

CLIENT NAME: MOUNT LOGAN RESOURCES LTD./GINGURO

ATTENTION TO: WINSTON WHYMARK

(201-073) Aqua Regia Digest - Metals Package, ICP-OES finish

DATE SAMPLED: Nov 11, 2014	DATE RECEIVED: Nov 11, 2014					DATE REPORTED: Nov 25, 2014					SAMPLE TYPE: Drill Core				
Analyte:	S	Sb	Sc	Se	Sn	Sr	Ta	Te	Th	Ti	Tl	U	V	W	
Unit:	%	ppm	ppm	ppm	ppm	ppm	ppm	ppm	ppm	%	ppm	ppm	ppm	ppm	
RDL:	0.005	1	0.5	10	5	0.5	10	10	5	0.01	5	5	0.5	1	
E5158068 (6064721)	<0.005	<1	<0.5	<10	<5	6.0	<10	<10	<5	0.04	<5	<5	7.1	<1	
E5158069 (6064722)	0.050	<1	<0.5	<10	<5	10.4	<10	<10	<5	0.04	<5	<5	9.1	<1	
E5158070 (6064723)	0.007	<1	<0.5	<10	<5	7.4	<10	<10	<5	0.06	<5	<5	8.4	<1	
E5158071 (6064724)	0.006	<1	<0.5	<10	<5	9.4	<10	<10	<5	0.05	<5	<5	8.3	<1	
E5158072 (6064725)	<0.005	<1	<0.5	<10	<5	6.8	<10	<10	<5	0.05	<5	<5	8.9	<1	
E5158073 (6064726)	<0.005	<1	<0.5	<10	<5	7.0	<10	<10	<5	0.06	<5	<5	9.6	<1	
E5158074 (6064727)	0.022	<1	3.0	<10	<5	29.5	<10	<10	<5	0.08	<5	<5	28.1	<1	
E5158075 (6064728)	0.031	<1	1.7	<10	<5	33.3	<10	<10	<5	0.06	<5	<5	12.0	<1	
E5158076 (6064729)	0.107	<1	5.2	<10	<5	8.1	<10	<10	<5	0.13	<5	<5	49.0	<1	
E5158077 (6064730)	0.475	<1	6.8	<10	<5	18.3	<10	<10	<5	0.17	<5	<5	58.1	<1	
E5158078 (6064731)	0.162	<1	5.5	<10	<5	8.7	<10	<10	<5	0.11	<5	<5	49.6	<1	
E5158079 (6064732)	0.055	<1	3.7	<10	<5	17.7	<10	<10	<5	0.15	<5	<5	47.2	<1	
E5158080 (6064733)	0.476	<1	4.6	<10	<5	21.0	<10	<10	<5	0.09	<5	<5	44.0	<1	
E5158081 (6064734)	0.204	<1	4.5	<10	<5	17.3	<10	<10	<5	0.12	<5	<5	51.9	<1	
E5158082 (6064735)	0.442	<1	7.1	<10	<5	16.2	<10	<10	<5	0.10	<5	<5	82.5	<1	
E5158084 (6064736)	0.123	<1	1.0	<10	<5	11.5	<10	<10	<5	0.06	<5	<5	12.0	<1	
E5158085 (6064737)	0.037	<1	0.5	<10	<5	9.3	<10	<10	<5	0.09	<5	<5	11.8	<1	
E5158086 (6064738)	0.109	<1	<0.5	<10	<5	11.3	<10	<10	<5	0.10	<5	<5	12.9	<1	
E5158087 (6064739)	1.73	<1	4.5	<10	<5	186	<10	<10	<5	0.12	<5	<5	102	6	
E5158088 (6064740)	0.104	<1	0.6	<10	<5	12.1	<10	<10	<5	0.11	<5	<5	13.1	<1	
E5158089 (6064741)	0.104	<1	0.7	<10	<5	12.6	<10	<10	<5	0.12	<5	<5	13.4	<1	
E5158090 (6064742)	0.088	<1	0.9	<10	<5	15.1	<10	<10	<5	0.11	<5	<5	15.8	<1	
E5158091 (6064743)	0.095	<1	0.6	<10	<5	13.4	<10	<10	<5	0.09	<5	<5	12.5	<1	
E5158092 (6064744)	0.048	<1	1.0	<10	<5	18.9	<10	<10	<5	0.10	<5	<5	17.6	<1	
E5158093 (6064745)	0.064	<1	1.1	<10	<5	14.6	<10	<10	<5	0.11	<5	<5	19.3	<1	
E5158094 (6064746)	0.090	<1	0.9	<10	<5	9.5	<10	<10	<5	0.13	<5	<5	19.0	<1	
E5158095 (6064747)	0.125	<1	1.4	<10	<5	12.1	<10	<10	<5	0.14	<5	<5	24.0	<1	
E5158096 (6064748)	0.176	<1	1.7	<10	<5	17.9	<10	<10	<5	0.12	<5	<5	29.2	<1	
E5158097 (6064749)	0.273	<1	1.9	<10	<5	19.7	<10	<10	<5	0.12	<5	<5	29.0	<1	
E5158098 (6064750)	0.367	<1	1.7	<10	<5	17.7	<10	<10	<5	0.13	<5	<5	23.8	<1	
E5158099 (6064751)	0.405	<1	1.7	<10	<5	11.2	<10	<10	<5	0.14	<5	<5	25.0	<1	
E5158100 (6064752)	0.805	<1	1.8	<10	<5	18.7	<10	<10	<5	0.11	<5	<5	26.8	<1	

Certified By:



Certificate of Analysis

AGAT WORK ORDER: 14U914777

PROJECT: PARDO

5623 McADAM ROAD
 MISSISSAUGA, ONTARIO
 CANADA L4Z 1N9
 TEL (905)501-9998
 FAX (905)501-0589
<http://www.agatlabs.com>

CLIENT NAME: MOUNT LOGAN RESOURCES LTD./GINGURO

ATTENTION TO: WINSTON WHYMARK

(201-073) Aqua Regia Digest - Metals Package, ICP-OES finish

DATE SAMPLED: Nov 11, 2014	DATE RECEIVED: Nov 11, 2014		DATE REPORTED: Nov 25, 2014		SAMPLE TYPE: Drill Core									
Analyte:	S	Sb	Sc	Se	Sn	Sr	Ta	Te	Th	Ti	Tl	U	V	W
Unit:	%	ppm	ppm	ppm	ppm	ppm	ppm	ppm	ppm	%	ppm	ppm	ppm	ppm
RDL:	0.005	1	0.5	10	5	0.5	10	10	5	0.01	5	5	0.5	1
E5158101 (6064753)	0.210	<1	2.5	<10	<5	24.0	<10	<10	<5	0.08	<5	<5	34.5	<1
E5158102 (6064754)	0.142	<1	5.9	<10	<5	11.1	<10	<10	<5	0.20	<5	<5	70.0	<1
E5158103 (6064755)	0.158	<1	2.0	<10	<5	9.2	<10	<10	<5	0.05	<5	<5	26.9	<1
E5158104 (6064756)	0.064	<1	7.7	<10	<5	8.9	<10	<10	7	0.05	<5	31	129	<1
E5158105 (6064757)	0.092	<1	10.2	<10	<5	13.7	<10	<10	12	0.06	<5	168	160	<1
E5158106 (6064758)	0.201	<1	12.9	<10	<5	32.7	<10	<10	17	0.08	<5	347	159	<1
E5158108 (6064759)	<0.005	<1	<0.5	<10	<5	10.2	<10	<10	<5	<0.01	<5	<5	2.9	<1
E5158109 (6064760)	0.024	<1	9.4	<10	<5	10.1	<10	<10	<5	0.07	<5	96	125	<1
E5158110 (6064761)	0.018	<1	7.3	<10	<5	18.1	<10	<10	<5	0.07	<5	24	173	<1
E5158111 (6064762)	0.045	<1	4.8	<10	<5	7.9	<10	<10	<5	0.04	<5	6	111	<1
E5158112 (6064763)	0.181	<1	1.9	<10	<5	5.1	<10	<10	<5	0.01	<5	<5	40.7	<1
E5158113 (6064764)	2.06	<1	2.0	<10	<5	5.2	<10	<10	<5	0.02	<5	<5	37.8	<1
E5158114 (6064765)	0.593	<1	1.3	<10	<5	8.2	<10	<10	<5	0.04	<5	<5	27.4	<1
E5158115 (6064766)	0.683	<1	2.2	<10	<5	10.8	<10	<10	<5	0.03	<5	<5	28.6	<1
E5158116 (6064767)	0.351	<1	3.5	<10	<5	9.8	<10	<10	<5	0.04	<5	<5	48.2	<1

Certified By:



Certificate of Analysis

AGAT WORK ORDER: 14U914777

PROJECT: PARDO

5623 McADAM ROAD
 MISSISSAUGA, ONTARIO
 CANADA L4Z 1N9
 TEL (905)501-9998
 FAX (905)501-0589
<http://www.agatlabs.com>

CLIENT NAME: MOUNT LOGAN RESOURCES LTD./GINGURO

ATTENTION TO: WINSTON WHYMARK

(201-073) Aqua Regia Digest - Metals Package, ICP-OES finish

DATE SAMPLED: Nov 11, 2014 DATE RECEIVED: Nov 11, 2014 DATE REPORTED: Nov 25, 2014 SAMPLE TYPE: Drill Core

Sample ID (AGAT ID)	Analyte: Unit: RDL:	Y ppm 1	Zn ppm 0.5	Zr ppm 5
E5158068 (6064721)		7	39.0	<5
E5158069 (6064722)		4	65.9	<5
E5158070 (6064723)		4	32.7	<5
E5158071 (6064724)		5	33.4	<5
E5158072 (6064725)		5	36.5	<5
E5158073 (6064726)		4	44.7	<5
E5158074 (6064727)		18	52.9	7
E5158075 (6064728)		14	38.6	<5
E5158076 (6064729)		12	143	7
E5158077 (6064730)		15	133	<5
E5158078 (6064731)		7	132	<5
E5158079 (6064732)		18	90.7	6
E5158080 (6064733)		16	202	6
E5158081 (6064734)		16	82.3	6
E5158082 (6064735)		21	164	9
E5158084 (6064736)		10	74.4	5
E5158085 (6064737)		7	39.1	<5
E5158086 (6064738)		6	53.0	6
E5158087 (6064739)		6	87.0	6
E5158088 (6064740)		5	47.7	<5
E5158089 (6064741)		6	47.3	5
E5158090 (6064742)		6	40.9	<5
E5158091 (6064743)		5	37.8	<5
E5158092 (6064744)		7	45.8	<5
E5158093 (6064745)		6	62.7	<5
E5158094 (6064746)		6	74.2	<5
E5158095 (6064747)		5	55.6	<5
E5158096 (6064748)		5	53.8	<5
E5158097 (6064749)		10	55.7	<5
E5158098 (6064750)		11	53.2	<5
E5158099 (6064751)		4	71.3	<5
E5158100 (6064752)		4	62.1	<5

Certified By:



Certificate of Analysis

AGAT WORK ORDER: 14U914777

PROJECT: PARDO

5623 McADAM ROAD
 MISSISSAUGA, ONTARIO
 CANADA L4Z 1N9
 TEL (905)501-9998
 FAX (905)501-0589
<http://www.agatlabs.com>

CLIENT NAME: MOUNT LOGAN RESOURCES LTD./GINGURO

ATTENTION TO: WINSTON WHYMARK

(201-073) Aqua Regia Digest - Metals Package, ICP-OES finish

DATE SAMPLED: Nov 11, 2014 DATE RECEIVED: Nov 11, 2014 DATE REPORTED: Nov 25, 2014 SAMPLE TYPE: Drill Core

Sample ID (AGAT ID)	Analyte:	Y	Zn	Zr
	Unit:	ppm	ppm	ppm
	RDL:	1	0.5	5
E5158101 (6064753)		10	61.1	<5
E5158102 (6064754)		7	139	<5
E5158103 (6064755)		5	79.6	<5
E5158104 (6064756)		11	177	<5
E5158105 (6064757)		22	186	12
E5158106 (6064758)		33	169	15
E5158108 (6064759)		1	5.1	<5
E5158109 (6064760)		11	111	18
E5158110 (6064761)		10	157	7
E5158111 (6064762)		5	141	<5
E5158112 (6064763)		5	108	<5
E5158113 (6064764)		5	94.6	<5
E5158114 (6064765)		7	89.2	<5
E5158115 (6064766)		5	69.8	<5
E5158116 (6064767)		5	91.6	<5

Comments: RDL - Reported Detection Limit

Certified By:



Certificate of Analysis

AGAT WORK ORDER: 14U914777

PROJECT: PARDO

5623 McADAM ROAD
 MISSISSAUGA, ONTARIO
 CANADA L4Z 1N9
 TEL (905)501-9998
 FAX (905)501-0589
<http://www.agatlabs.com>

CLIENT NAME: MOUNT LOGAN RESOURCES LTD./GINGURO

ATTENTION TO: WINSTON WHYMARK

(202-555) Fire Assay - Au, Pt, Pd Trace Levels, ICP-OES finish (50g charge)

DATE SAMPLED: Nov 11, 2014 DATE RECEIVED: Nov 11, 2014 DATE REPORTED: Nov 25, 2014 SAMPLE TYPE: Drill Core

Sample ID (AGAT ID)	Analyte: Unit: RDL:	Sample Login Weight kg	Au ppm	Pd ppm	Pt ppm
E5158068 (6064721)		0.88	<0.001	<0.001	<0.005
E5158069 (6064722)		0.86	0.001	<0.001	<0.005
E5158070 (6064723)		0.82	<0.001	<0.001	<0.005
E5158071 (6064724)		0.84	<0.001	<0.001	<0.005
E5158072 (6064725)		1.16	<0.001	<0.001	<0.005
E5158073 (6064726)		0.52	<0.001	<0.001	<0.005
E5158074 (6064727)		1.60	<0.001	<0.001	<0.005
E5158075 (6064728)		0.54	<0.001	<0.001	<0.005
E5158076 (6064729)		1.18	<0.001	<0.001	<0.005
E5158077 (6064730)		1.72	0.019	<0.001	<0.005
E5158078 (6064731)		1.66	<0.001	<0.001	<0.005
E5158079 (6064732)		1.56	0.003	<0.001	<0.005
E5158080 (6064733)		0.72	0.001	0.003	<0.005
E5158081 (6064734)		0.78	<0.001	<0.001	<0.005
E5158082 (6064735)		1.16	<0.001	0.002	<0.005
E5158084 (6064736)		0.80	<0.001	<0.001	<0.005
E5158085 (6064737)		1.58	<0.001	<0.001	<0.005
E5158086 (6064738)		1.58	<0.001	<0.001	<0.005
E5158087 (6064739)		0.06	0.174	0.358	0.317
E5158088 (6064740)		1.52	<0.001	<0.001	<0.005
E5158089 (6064741)		1.58	<0.001	<0.001	<0.005
E5158090 (6064742)		1.58	<0.001	<0.001	<0.005
E5158091 (6064743)		1.64	<0.001	<0.001	<0.005
E5158092 (6064744)		1.68	<0.001	<0.001	<0.005
E5158093 (6064745)		1.72	<0.001	<0.001	<0.005
E5158094 (6064746)		1.22	<0.001	<0.001	<0.005
E5158095 (6064747)		1.06	<0.001	<0.001	<0.005
E5158096 (6064748)		1.66	<0.001	<0.001	<0.005
E5158097 (6064749)		1.66	<0.001	<0.001	<0.005
E5158098 (6064750)		1.48	<0.001	<0.001	<0.005
E5158099 (6064751)		1.20	<0.001	<0.001	<0.005

Certified By:



Certificate of Analysis

AGAT WORK ORDER: 14U914777

PROJECT: PARDO

5623 McADAM ROAD
 MISSISSAUGA, ONTARIO
 CANADA L4Z 1N9
 TEL (905)501-9998
 FAX (905)501-0589
<http://www.agatlabs.com>

CLIENT NAME: MOUNT LOGAN RESOURCES LTD./GINGURO

ATTENTION TO: WINSTON WHYMARK

(202-555) Fire Assay - Au, Pt, Pd Trace Levels, ICP-OES finish (50g charge)

DATE SAMPLED: Nov 11, 2014 DATE RECEIVED: Nov 11, 2014 DATE REPORTED: Nov 25, 2014 SAMPLE TYPE: Drill Core

Sample ID (AGAT ID)	Analyte:	Sample Login Weight	Au	Pd	Pt
	Unit:	kg	ppm	ppm	ppm
	RDL:	0.01	0.001	0.001	0.005
E5158100 (6064752)		1.20	0.002	<0.001	<0.005
E5158101 (6064753)		0.86	<0.001	<0.001	<0.005
E5158102 (6064754)		1.12	<0.001	<0.001	<0.005
E5158103 (6064755)		1.56	<0.001	<0.001	<0.005
E5158104 (6064756)		0.82	<0.001	<0.001	<0.005
E5158105 (6064757)		0.86	<0.001	<0.001	<0.005
E5158106 (6064758)		0.86	<0.001	<0.001	<0.005
E5158108 (6064759)		0.62	<0.001	<0.001	<0.005
E5158109 (6064760)		1.34	<0.001	<0.001	<0.005
E5158110 (6064761)		0.90	<0.001	<0.001	<0.005
E5158111 (6064762)		1.32	<0.001	<0.001	<0.005
E5158112 (6064763)		0.82	<0.001	<0.001	<0.005
E5158113 (6064764)		1.00	0.003	<0.001	<0.005
E5158114 (6064765)		1.68	0.003	<0.001	<0.005
E5158115 (6064766)		1.64	0.003	<0.001	<0.005
E5158116 (6064767)		2.10	0.002	<0.001	<0.005

Comments: RDL - Reported Detection Limit

Certified By:



CLIENT NAME: MOUNT LOGAN RESOURCES LTD./GINGURO

ATTENTION TO: WINSTON WHYMARK

(201-073) Aqua Regia Digest - Metals Package, ICP-OES finish

Parameter	REPLICATE #1				REPLICATE #2							
	Sample ID	Original	Replicate	RPD	Sample ID	Original	Replicate	RPD				
Ag	6064721	< 0.2	< 0.2	0.0%	6064759	< 0.2	< 0.2	0.0%				
Al	6064721	1.46	1.51	3.4%	6064759	0.228	0.182	22.4%				
As	6064740	< 1	< 1	0.0%	6064759	< 1	< 1	0.0%				
B	6064721	< 5	< 5	0.0%	6064759	< 5	< 5	0.0%				
Ba	6064721	98	104	5.9%	6064759	8	7	13.3%				
Be	6064721	< 0.5	< 0.5	0.0%	6064759	< 0.5	< 0.5	0.0%				
Bi	6064721	< 1	< 1	0.0%	6064759	< 1	< 1	0.0%				
Ca	6064721	0.135	0.135	0.0%	6064759	0.03	0.01					
Cd	6064721	< 0.5	< 0.5	0.0%	6064759	< 0.5	< 0.5	0.0%				
Ce	6064721	126	128	1.6%	6064759	8	8	0.0%				
Co	6064721	7.34	7.68	4.5%	6064759	1.07	0.93	14.0%				
Cr	6064721	21.1	21.1	0.0%	6064759	96.1	95.8	0.3%				
Cu	6064721	2.8	2.2	24.0%	6064759	3.9	2.4					
Fe	6064721	2.28	2.37	3.9%	6064759	0.32	0.26	20.7%				
Ga	6064721	< 5	< 5	0.0%	6064759	< 5	< 5	0.0%				
Hg	6064721	< 1	< 1	0.0%	6064759	< 1	< 1	0.0%				
In	6064721	< 1	< 1	0.0%	6064759	< 1	< 1	0.0%				
K	6064721	0.60	0.62	3.3%	6064759	0.072	0.064	11.8%				
La	6064721	80	82	2.5%	6064759	4	4	0.0%				
Li	6064721	17	17	0.0%	6064759	1	< 1					
Mg	6064721	1.11	1.15	3.5%	6064759	0.12	0.06					
Mn	6064721	280	287	2.5%	6064759	28	22	24.0%				
Mo	6064721	1.54	1.66	7.5%	6064759	1.2	1.2	0.0%				
Na	6064721	0.01	0.01	0.0%	6064759	0.02	0.02	0.0%				
Ni	6064721	12.0	11.8	1.7%	6064759	4.14	3.84	7.5%				
P	6064721	569	573	0.7%	6064759	38	21					
Pb	6064721	< 0.5	< 0.5	0.0%	6064759	1.4	2.0					
Rb	6064721	82	84	2.4%	6064759	< 10	< 10	0.0%				
S	6064721	< 0.005	< 0.005	0.0%	6064759	< 0.005	< 0.005	0.0%				
Sb	6064721	< 1	< 1	0.0%	6064759	< 1	< 1	0.0%				
Sc	6064721	< 0.5	< 0.5	0.0%	6064759	< 0.5	< 0.5	0.0%				



CLIENT NAME: MOUNT LOGAN RESOURCES LTD./GINGURO

ATTENTION TO: WINSTON WHYMARK

(201-073) Aqua Regia Digest - Metals Package, ICP-OES finish

Parameter	CRM #1 (ref.CFRM-100)				CRM #2 (ref.CFRM-100)										
	Expect	Actual	Recovery	Limits	Expect	Actual	Recovery	Limits							
Co	184	184	100%	90% - 110%	184	181	98%	90% - 110%							
Cu	3494	3446	99%	90% - 110%	3494	3466	99%	90% - 110%							
Ni	2985	2863	96%	90% - 110%	2985	2831	95%	90% - 110%							

(202-555) Fire Assay - Au, Pt, Pd Trace Levels, ICP-OES finish (50g charge)

Parameter	CRM #1 (ref.PG124)				CRM #2 (ref.PG129)										
	Expect	Actual	Recovery	Limits	Expect	Actual	Recovery	Limits							
Au	0.321	0.314	98%	90% - 110%	1.1	1.1	104%	90% - 110%							
Pd	0.037	0.038	102%	90% - 110%	0.115	0.117	101%	90% - 110%							
Pt	0.09	0.09	100%	90% - 110%	0.239	0.251	105%	90% - 110%							



Method Summary

CLIENT NAME: MOUNT LOGAN RESOURCES LTD./GINGURO
 PROJECT: PARDO
 SAMPLING SITE:

AGAT WORK ORDER: 14U914777
 ATTENTION TO: WINSTON WHYMARK
 SAMPLED BY:

PARAMETER	AGAT S.O.P	LITERATURE REFERENCE	ANALYTICAL TECHNIQUE
Solid Analysis			
Ag	MIN-200-12020		ICP/OES
Al	MIN-200-12020		ICP/OES
As	MIN-200-12020		ICP/OES
B	MIN-200-12020		ICP/OES
Ba	MIN-200-12020		ICP/OES
Be	MIN-200-12020		ICP/OES
Bi	MIN-200-12020		ICP/OES
Ca	MIN-200-12020		ICP/OES
Cd	MIN-200-12020		ICP/OES
Ce	MIN-200-12020		ICP/OES
Co	MIN-200-12020		ICP/OES
Cr	MIN-200-12020		ICP/OES
Cu	MIN-200-12020		ICP/OES
Fe	MIN-200-12020		ICP/OES
Ga	MIN-200-12020		ICP/OES
Hg	MIN-200-12020		ICP/OES
In	MIN-200-12020		ICP/OES
K	MIN-200-12020		ICP/OES
La	MIN-200-12020		ICP/OES
Li	MIN-200-12020		ICP/OES
Mg	MIN-200-12020		ICP/OES
Mn	MIN-200-12020		ICP/OES
Mo	MIN-200-12020		ICP/OES
Na	MIN-200-12020		ICP/OES
Ni	MIN-200-12020		ICP/OES
P	MIN-200-12020		ICP/OES
Pb	MIN-200-12020		ICP/OES
Rb	MIN-200-12020		ICP/OES
S	MIN-200-12020		ICP/OES
Sb	MIN-200-12020		ICP/OES
Sc	MIN-200-12020		ICP/OES
Se	MIN-200-12020		ICP/OES
Sn	MIN-200-12020		ICP/OES
Sr	MIN-200-12020		ICP/OES
Ta	MIN-200-12020		ICP/OES
Te	MIN-200-12020		ICP/OES
Th	MIN-200-12020		ICP/OES
Ti	MIN-200-12020		ICP/OES
Tl	MIN-200-12020		ICP/OES
U	MIN-200-12020		ICP/OES
V	MIN-200-12020		ICP/OES
W	MIN-200-12020		ICP/OES
Y	MIN-200-12020		ICP/OES
Zn	MIN-200-12020		ICP/OES
Zr	MIN-200-12020		ICP/OES
Sample Login Weight	MIN-12009		BALANCE
Au	MIN-200-12006	BUGBEE, E: A Textbook of Fire Assaying	ICP/OES



Method Summary

CLIENT NAME: MOUNT LOGAN RESOURCES LTD./GINGURO

AGAT WORK ORDER: 14U914777

PROJECT: PARDO

ATTENTION TO: WINSTON WHYMARK

SAMPLING SITE:

SAMPLED BY:

PARAMETER	AGAT S.O.P	LITERATURE REFERENCE	ANALYTICAL TECHNIQUE
Pd	MIN-200-12006	BUGBEE, E: A Textbook of Fire Assaying	ICP/OES
Pt	MIN-200-12006	BUGBEE, E: A Textbook of Fire Assaying	ICP/OES



**CLIENT NAME: MOUNT LOGAN RESOURCES LTD./GINGURO
101-957 CAMBRIAN HEIGHTS DR.
SUDBURY, ON P3C5S5
(705) 222-8800**

ATTENTION TO: WINSTON WHYMARK

PROJECT: PARDO

AGAT WORK ORDER: 14U914976

SOLID ANALYSIS REVIEWED BY: Yufei Chen, Lab Co-ordinator

DATE REPORTED: Nov 17, 2014

PAGES (INCLUDING COVER): 5

Should you require any information regarding this analysis please contact your client services representative at (905) 501-9998

***NOTES**

All samples are stored at no charge for 90 days. Please contact the lab if you require additional sample storage time.



Certificate of Analysis

AGAT WORK ORDER: 14U914976

PROJECT: PARDO

5623 McADAM ROAD
MISSISSAUGA, ONTARIO
CANADA L4Z 1N9
TEL (905)501-9998
FAX (905)501-0589
<http://www.agatlabs.com>

CLIENT NAME: MOUNT LOGAN RESOURCES LTD./GINGURO

ATTENTION TO: WINSTON WHYMARK

(202-552) Fire Assay - Trace Au, ICP-OES finish (50g charge) (ppm)

DATE SAMPLED: Nov 12, 2014

DATE RECEIVED: Nov 12, 2014

DATE REPORTED: Nov 17, 2014

SAMPLE TYPE: Drill Core

Sample ID (AGAT ID)	Analyte:	Sample Login Weight	Au
	Unit:	kg	ppm
	RDL:	0.01	0.001
E5158117 (6066961)		0.64	0.002
E5158118 (6066962)		0.60	0.003
E5158119 (6066963)		0.58	0.002
E5158120 (6066964)		0.38	0.002
E5158121 (6066965)		0.68	<0.001
E5158122 (6066966)		0.50	0.003
E5158123 (6066967)		0.62	0.040
E5158124 (6066968)		0.44	0.203
E5158125 (6066969)		0.50	0.767
E5158126 (6066970)		0.76	0.358
E5158127 (6066971)		0.60	0.098
E5158128 (6066972)		0.52	0.002
E5158129 (6066973)		0.74	0.001
E5158130 (6066974)		0.54	0.001
E5158131 (6066975)		0.84	0.001
E5158132 (6066976)		0.46	0.010
E5158133 (6066977)		0.36	0.002
E5158134 (6066978)		0.24	0.003
E5158135 (6066979)		0.06	2.35

Comments: RDL - Reported Detection Limit

Certified By:



AGAT Laboratories

Quality Assurance - Replicate
AGAT WORK ORDER: 14U914976
PROJECT: PARDO

5623 McADAM ROAD
 MISSISSAUGA, ONTARIO
 CANADA L4Z 1N9
 TEL (905)501-9998
 FAX (905)501-0589
<http://www.agatlabs.com>

CLIENT NAME: MOUNT LOGAN RESOURCES LTD./GINGURO

ATTENTION TO: WINSTON WHYMARK

(202-552) Fire Assay - Trace Au, ICP-OES finish (50g charge) (ppm)

Parameter	Sample ID	REPLICATE #1												
		Original	Replicate	RPD										
Au	6066961	0.002	0.003	40.0%										



AGAT Laboratories

Quality Assurance - Certified Reference materials

AGAT WORK ORDER: 14U914976

PROJECT: PARDO

5623 McADAM ROAD
 MISSISSAUGA, ONTARIO
 CANADA L4Z 1N9
 TEL (905)501-9998
 FAX (905)501-0589
<http://www.agatlabs.com>

CLIENT NAME: MOUNT LOGAN RESOURCES LTD./GINGURO

ATTENTION TO: WINSTON WHYMARK

(202-552) Fire Assay - Trace Au, ICP-OES finish (50g charge) (ppm)

Parameter	CRM #1 (ref.GSP7J)				CRM #2 (ref.GSP7J)											
	Expect	Actual	Recovery	Limits	Expect	Actual	Recovery	Limits								
Au	0.722	0.715	99%	90% - 110%	0.722	0.783	108%	90% - 110%								



Method Summary

CLIENT NAME: MOUNT LOGAN RESOURCES LTD./GINGURO

AGAT WORK ORDER: 14U914976

PROJECT: PARDO

ATTENTION TO: WINSTON WHYMARK

SAMPLING SITE:

SAMPLED BY:

PARAMETER	AGAT S.O.P	LITERATURE REFERENCE	ANALYTICAL TECHNIQUE
Solid Analysis			
Sample Login Weight	MIN-12009		BALANCE
Au	MIN-200-12006	BUGBEE, E: A Textbook of Fire Assaying	ICP-OES



CLIENT NAME: MOUNT LOGAN RESOURCES LTD./GINGURO
101-957 CAMBRIAN HEIGHTS DR.
SUDBURY, ON P3C5S5
(705) 222-8800

ATTENTION TO: WINSTON WHYMARK

PROJECT: PARDO

AGAT WORK ORDER: 14U916369

SOLID ANALYSIS REVIEWED BY: Yufei Chen, Lab Co-ordinator

DATE REPORTED: Nov 25, 2014

PAGES (INCLUDING COVER): 6

Should you require any information regarding this analysis please contact your client services representative at (905) 501-9998

*NOTES

All samples are stored at no charge for 90 days. Please contact the lab if you require additional sample storage time.



Certificate of Analysis

AGAT WORK ORDER: 14U916369

PROJECT: PARDO

5623 McADAM ROAD
 MISSISSAUGA, ONTARIO
 CANADA L4Z 1N9
 TEL (905)501-9998
 FAX (905)501-0589
<http://www.agatlabs.com>

CLIENT NAME: MOUNT LOGAN RESOURCES LTD./GINGURO

ATTENTION TO: WINSTON WHYMARK

(202-551) Mt.Logan/Ginguro Fire Assay (50g) - AAS

DATE SAMPLED: Nov 14, 2014

DATE RECEIVED: Nov 14, 2014

DATE REPORTED: Nov 25, 2014

SAMPLE TYPE: Drill Core

Sample ID (AGAT ID)	Analyte: Unit: RDL:	Sample Login Weight kg	Average Gold ppm	Au_1 ppm	Au_2 ppm
E5158143 (6080566)		0.82	0.527	0.545	0.508
E5158144 (6080567)		0.82	0.331	0.316	0.345
E5158145 (6080568)		0.96	0.024	0.023	0.025
E5158146 (6080569)		0.68	0.041	0.041	0.041
E5158147 (6080570)		1.00	0.019	0.022	0.015
E5158148 (6080571)		0.60	0.071	0.068	0.073
E5158149 (6080572)		0.56	0.090	0.096	0.083
E5158150 (6080573)		0.86	0.007	0.010	0.004
E5158151 (6080574)		1.04	0.018	0.024	0.012
E5158152 (6080575)		0.50	0.125	0.131	0.119
E5158153 (6080576)		1.46	0.085	0.080	0.089
E5158154 (6080577)		0.94	0.067	0.065	0.069
E5158155 (6080578)		0.86	0.070	0.059	0.081
E5158156 (6080579)		0.86	0.093	0.088	0.098
E5158157 (6080580)		0.90	0.094	0.089	0.099
E5158158 (6080581)		0.76	0.064	0.062	0.066
E5158159 (6080582)		0.94	0.036	0.036	0.035
E5158160 (6080583)		0.76	0.038	0.038	0.038
E5158161 (6080584)		0.86	0.029	0.031	0.027
E5158162 (6080585)		0.26	<0.002	<0.002	<0.002
E5158163 (6080586)		0.82	0.041	0.035	0.047
E5158164 (6080587)		0.86	0.007	0.006	0.008
E5158165 (6080588)		0.68	0.014	0.010	0.018
E5158166 (6080589)		0.84	0.003	0.003	0.002
E5158167 (6080590)		0.66	0.003	0.003	0.003
E5158168 (6080591)		0.84	0.004	0.004	0.003
E5158169 (6080592)		0.76	0.009	0.008	0.009
E5158170 (6080593)		0.86	0.016	0.024	0.007
E5158171 (6080594)		0.60	0.023	0.023	0.022
E5158172 (6080595)		0.66	0.014	0.014	0.014
E5158173 (6080596)		0.50	0.011	0.012	0.010

Certified By:



Certificate of Analysis

AGAT WORK ORDER: 14U916369

PROJECT: PARDO

5623 McADAM ROAD
 MISSISSAUGA, ONTARIO
 CANADA L4Z 1N9
 TEL (905)501-9998
 FAX (905)501-0589
<http://www.agatlabs.com>

CLIENT NAME: MOUNT LOGAN RESOURCES LTD./GINGURO

ATTENTION TO: WINSTON WHYMARK

(202-551) Mt.Logan/Ginguro Fire Assay (50g) - AAS

DATE SAMPLED: Nov 14, 2014

DATE RECEIVED: Nov 14, 2014

DATE REPORTED: Nov 25, 2014

SAMPLE TYPE: Drill Core

Sample ID (AGAT ID)	Analyte:	Sample Login Weight	Average Gold	Au_1	Au_2
	Unit:	kg	ppm	ppm	ppm
	RDL:	0.01	0.002	0.002	0.002
E5158174 (6080597)		0.72	0.029	0.011	0.047
E5158175 (6080598)		0.48	0.012	0.010	0.014
E5158176 (6080599)		0.68	0.088	0.101	0.074
E5158177 (6080600)		0.84	0.028	0.028	0.028
E5158178 (6080601)		0.56	0.017	0.012	0.021
E5158179 (6080602)		0.48	0.008	0.008	0.008
E5158180 (6080603)		0.60	0.036	0.030	0.041
E5158181 (6080604)		0.50	0.004	0.004	0.003
E5158182 (6080605)		0.14	2.43	2.42	2.44
E5158183 (6080606)		0.46	<0.002	<0.002	<0.002
E5158184 (6080607)		0.82	<0.002	<0.002	<0.002
E5158185 (6080608)		0.96	<0.002	<0.002	<0.002
E5158186 (6080609)		0.56	<0.002	<0.002	<0.002

Comments: RDL - Reported Detection Limit

Certified By:



AGAT Laboratories

Quality Assurance - Replicate
AGAT WORK ORDER: 14U916369
PROJECT: PARDO

5623 McADAM ROAD
MISSISSAUGA, ONTARIO
CANADA L4Z 1N9
TEL (905)501-9998
FAX (905)501-0589
<http://www.agatlabs.com>

CLIENT NAME: MOUNT LOGAN RESOURCES LTD./GINGURO

ATTENTION TO: WINSTON WHYMARK

Parameter														



AGAT Laboratories

Quality Assurance - Certified Reference materials
 AGAT WORK ORDER: 14U916369
 PROJECT: PARDO

5623 McADAM ROAD
 MISSISSAUGA, ONTARIO
 CANADA L4Z 1N9
 TEL (905)501-9998
 FAX (905)501-0589
<http://www.agatlabs.com>

CLIENT NAME: MOUNT LOGAN RESOURCES LTD./GINGURO

ATTENTION TO: WINSTON WHYMARK

(202-551) Mt.Logan/Ginguro Fire Assay (50g) - AAS

Parameter	CRM #1				CRM #2				CRM #3				CRM #4			
	Expect	Actual	Recovery	Limits	Expect	Actual	Recovery	Limits	Expect	Actual	Recovery	Limits	Expect	Actual	Recovery	Limits
Average Gold	0.722	0.722	100%	90% - 110%	6.09	6.23	102%	90% - 110%	1.44	1.42	98%	90% - 110%	0.722	0.697	96%	90% - 110%



Method Summary

CLIENT NAME: MOUNT LOGAN RESOURCES LTD./GINGURO

AGAT WORK ORDER: 14U916369

PROJECT: PARDO

ATTENTION TO: WINSTON WHYMARK

SAMPLING SITE:

SAMPLED BY:

PARAMETER	AGAT S.O.P	LITERATURE REFERENCE	ANALYTICAL TECHNIQUE
Solid Analysis			
Sample Login Weight	MIN-12009		BALANCE
Average Gold	MIN-200-12004		CALC
Au_1	MIN-200-12019		AAS
Au_2	MIN-200-12019		AAS



CLIENT NAME: MOUNT LOGAN RESOURCES LTD./GINGURO
101-957 CAMBRIAN HEIGHTS DR.
SUDBURY, ON P3C5S5
(705) 222-8800

ATTENTION TO: WINSTON WHYMARK

PROJECT:

AGAT WORK ORDER: 14U917004

SOLID ANALYSIS REVIEWED BY: Yufei Chen, Lab Co-ordinator

DATE REPORTED: Dec 04, 2014

PAGES (INCLUDING COVER): 6

Should you require any information regarding this analysis please contact your client services representative at (905) 501-9998

*NOTES

All samples are stored at no charge for 90 days. Please contact the lab if you require additional sample storage time.



Certificate of Analysis

AGAT WORK ORDER: 14U917004

PROJECT:

5623 McADAM ROAD
 MISSISSAUGA, ONTARIO
 CANADA L4Z 1N9
 TEL (905)501-9998
 FAX (905)501-0589
<http://www.agatlabs.com>

CLIENT NAME: MOUNT LOGAN RESOURCES LTD./GINGURO

ATTENTION TO: WINSTON WHYMARK

(202-551) Mt.Logan/Ginguro Fire Assay (50g) - AAS

DATE SAMPLED: Nov 17, 2014

DATE RECEIVED: Nov 17, 2014

DATE REPORTED: Dec 04, 2014

SAMPLE TYPE: Drill Core

Sample ID (AGAT ID)	Analyte: Unit: RDL:	Sample Login Weight kg	Average Gold ppm	Au_1 ppm	Au_2 ppm
E5158187 (6086446)		0.60	0.632	0.639	0.624
E5158188 (6086447)		0.58	0.403	0.408	0.398
E5158189 (6086448)		0.80	0.011	0.013	0.009
E5158190 (6086449)		0.46	0.066	0.064	0.067
E5158191 (6086450)		0.60	0.051	0.049	0.052
E5158192 (6086451)		0.54	0.045	0.037	0.052
E5158193 (6086452)		0.58	0.054	0.055	0.052
E5158194 (6086453)		0.36	0.007	0.008	0.006
E5158195 (6086454)		0.52	0.020	0.017	0.023
E5158196 (6086455)		0.48	0.012	0.011	0.013
E5158197 (6086456)		0.74	0.040	0.036	0.044
E5158198 (6086457)		0.50	0.013	0.015	0.010
E5158199 (6086458)		0.54	0.012	0.013	0.010
E5158200 (6086459)		0.48	0.004	0.003	0.004
E5158201 (6086460)		0.62	0.013	0.012	0.013
E5158202 (6086462)		0.22	<0.002	<0.002	<0.002
E5158203 (6086463)		0.52	0.077	0.089	0.064
E5158204 (6086464)		0.52	0.190	0.189	0.190
E5158205 (6086465)		0.56	0.021	0.016	0.026
E5158206 (6086466)		0.34	0.023	0.033	0.013
E5158207 (6086467)		0.46	0.002	0.002	<0.002
E5158208 (6086468)		0.98	0.005	0.005	0.005
E5158209 (6086469)		0.28	0.027	0.028	0.026
E5157963 (6086470)		0.36	<0.002	<0.002	<0.002
E5157964 (6086471)		0.84	0.002	0.002	<0.002
E5157965 (6086472)		0.66	0.003	0.003	<0.002
E5157966 (6086473)		0.40	0.009	0.009	0.008
E5157967 (6086474)		0.48	0.009	0.006	0.011
E5157968 (6086475)		0.74	0.013	0.014	0.011
E5157969 (6086476)		0.76	0.031	0.035	0.027
E5157970 (6086477)		0.70	0.043	0.044	0.042

Certified By:



Certificate of Analysis

AGAT WORK ORDER: 14U917004

PROJECT:

5623 McADAM ROAD
 MISSISSAUGA, ONTARIO
 CANADA L4Z 1N9
 TEL (905)501-9998
 FAX (905)501-0589
<http://www.agatlabs.com>

CLIENT NAME: MOUNT LOGAN RESOURCES LTD./GINGURO

ATTENTION TO: WINSTON WHYMARK

(202-551) Mt.Logan/Ginguro Fire Assay (50g) - AAS

DATE SAMPLED: Nov 17, 2014

DATE RECEIVED: Nov 17, 2014

DATE REPORTED: Dec 04, 2014

SAMPLE TYPE: Drill Core

Analyte:	Sample Login Weight	Average Gold	Au_1	Au_2
Unit:	kg	ppm	ppm	ppm
Sample ID (AGAT ID)	RDL:	0.01	0.002	0.002
E5157971 (6086478)		0.48	<0.002	<0.002

Comments: RDL - Reported Detection Limit

Certified By:



AGAT Laboratories

Quality Assurance - Replicate
AGAT WORK ORDER: 14U917004
PROJECT:

5623 McADAM ROAD
MISSISSAUGA, ONTARIO
CANADA L4Z 1N9
TEL (905)501-9998
FAX (905)501-0589
<http://www.agatlabs.com>

CLIENT NAME: MOUNT LOGAN RESOURCES LTD./GINGURO

ATTENTION TO: WINSTON WHYMARK

Parameter														



AGAT Laboratories

Quality Assurance - Certified Reference materials
 AGAT WORK ORDER: 14U917004
 PROJECT:

5623 McADAM ROAD
 MISSISSAUGA, ONTARIO
 CANADA L4Z 1N9
 TEL (905)501-9998
 FAX (905)501-0589
<http://www.agatlabs.com>

CLIENT NAME: MOUNT LOGAN RESOURCES LTD./GINGURO

ATTENTION TO: WINSTON WHYMARK

(202-551) Mt.Logan/Ginguro Fire Assay (50g) - AAS

Parameter	CRM #1				CRM #2											
	Expect	Actual	Recovery	Limits	Expect	Actual	Recovery	Limits								
Average Gold	6.09	5.58	91%	90% - 110%	0.722	0.761	105%	90% - 110%								



Method Summary

CLIENT NAME: MOUNT LOGAN RESOURCES LTD./GINGURO

AGAT WORK ORDER: 14U917004

PROJECT:

ATTENTION TO: WINSTON WHYMARK

SAMPLING SITE:

SAMPLED BY:

PARAMETER	AGAT S.O.P	LITERATURE REFERENCE	ANALYTICAL TECHNIQUE
Solid Analysis			
Sample Login Weight	MIN-12009		BALANCE
Average Gold	MIN-200-12004		CALC
Au_1	MIN-200-12019		AAS
Au_2	MIN-200-12019		AAS

PD-11-03Ext

100m

120m

140m

160m

170m

180m

200m

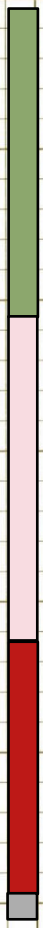
220m

Ramsey Lake Fm.

McKim Fm.

Matinenda Fm.

Archean Basement



PD-11-04Ext

460m

470m

480m

490m

500m

510m

520m

530m

540m

Pecors Fm.

River Valley Intrusion



PD-11-06Ext

480m

Pecors Fm.

490m

500m

510m

Archean Basement

520m

530m

540m

550m



PD-11-24Ext

250m

270m

290m

310m

330m

350m

370m

390m

Pecors Fm.

Ramsey Lake Fm.

McKim Fm.

Matinenda Fm.

Archean Basement



PD-14-22

0m

Over Burden

20m

Ramsey Lake Fm.

40m

60m

McKim Fm.

70m

80m

Matinenda Fm.

100m

120m

Archean Basement

140m

160m

