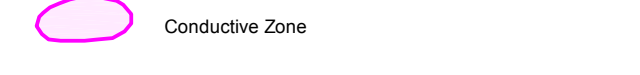
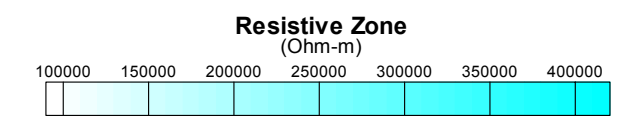


LEGEND

- MAGNETIC SURVEY**
- Magnetic High Trend
 - Questionable Continuity
 - Definite Continuity
 - Magnetic Low Trend
 - Questionable Continuity
 - Definite Continuity
 - Magnetic Body Outline
 - Positive Anomaly
 - Negative Anomaly
 - Magnetic Domain Boundary (MD-01, MD-02)

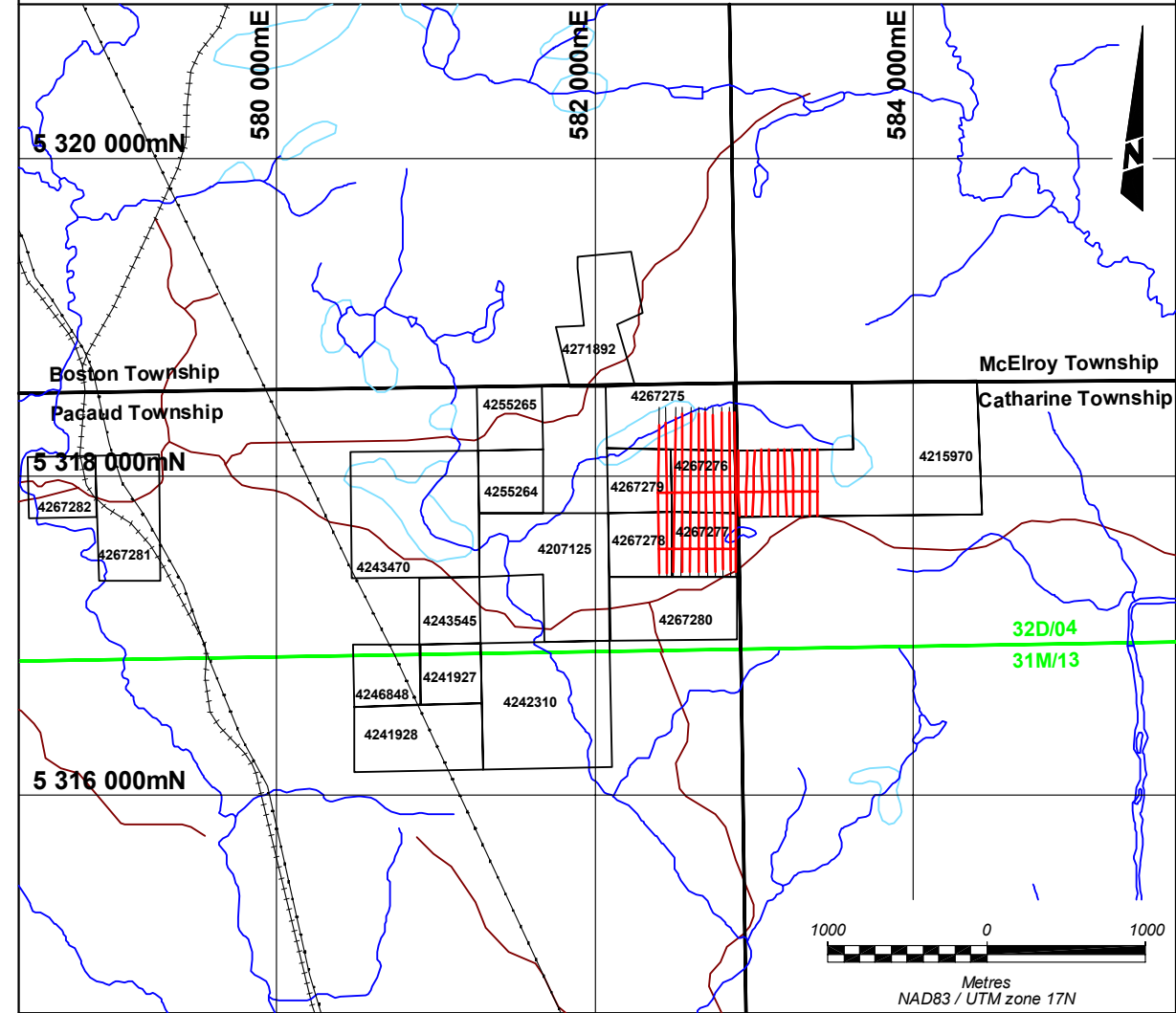
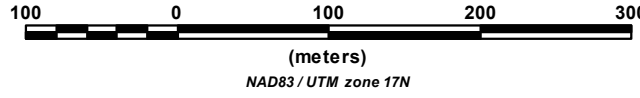
- INDUCED POLARIZATION SURVEY**
- | IP Contrast | Electrical Character... |
|--------------|-------------------------|
| Very Strong | Very Resistive |
| Strong | Resistive |
| Moderate | Conductive |
| Weak | Very Conductive |
| Questionable | |

- IP Trend**
- Questionable Continuity
 - Definite Continuity
- Conductive Trend**
- Questionable Continuity
 - Definite Continuity



- Miscellaneous Symbols**
- Observed Fault / Shear
 - Geophysically Inferred Fault / Shear

Scale 1:5000



**Northstar Gold Corp.
Miller Gold Project
Pacaud & Catharine Townships, Ontario**

**Geophysical Interpretation
(chargeability anomalies excluding I-01 series)**

Interpreted by: T. Loader, P.Geo.
 Surveyed by: Abitibi Geophysics Inc.
 Approved by: C. Brown, P.Geo.
 Reference map: 32D/04
 Project no: 14N001

2014/04
 2014/03
 2014/04
 Scale 1:5000
 Map no: 10.2

