

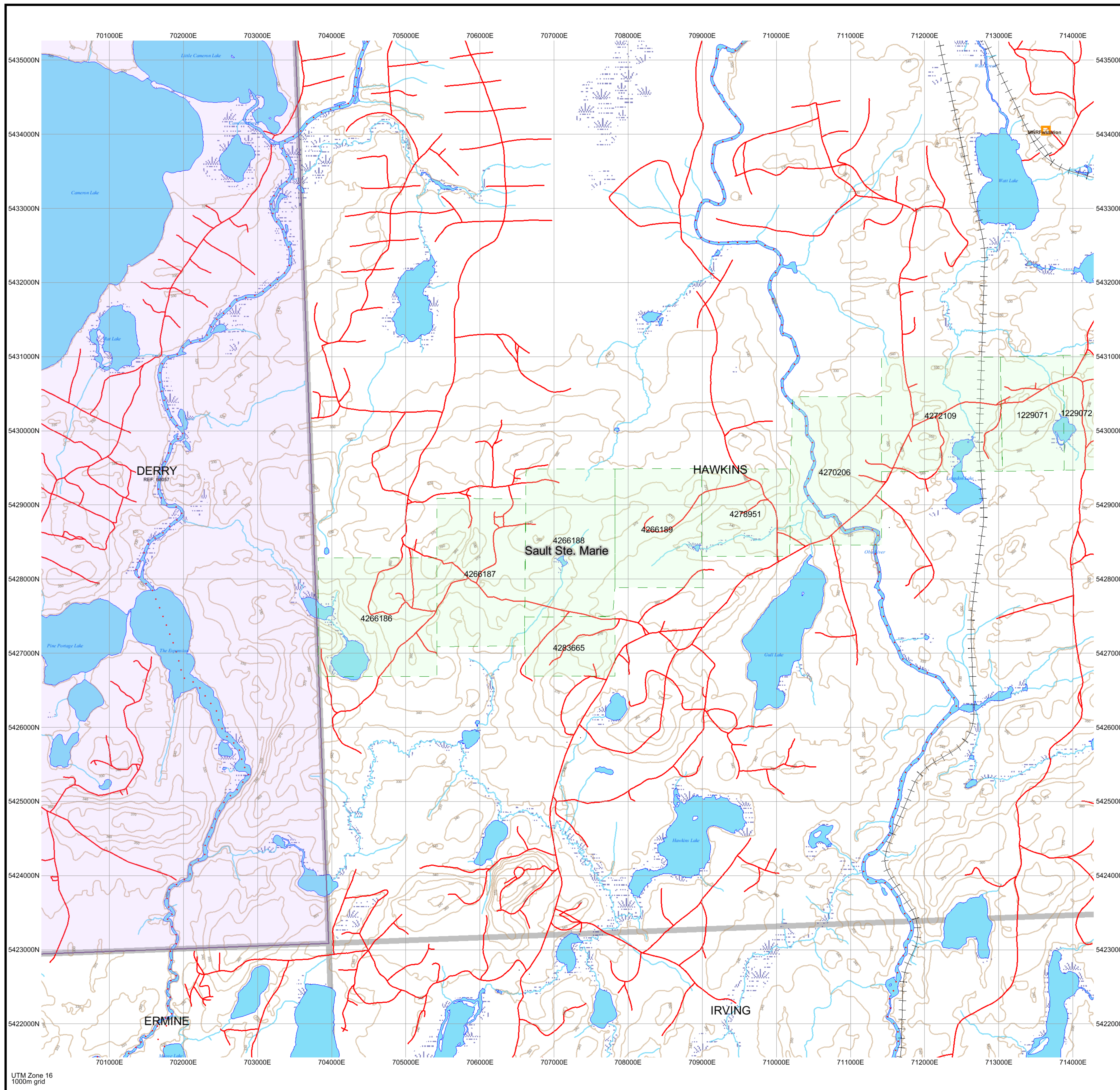
Date / Time of Issue: Mon Dec 21 10:53:59 EST 2015

TOWNSHIP / AREA
HAWKINS

PLAN
G-2316

ADMINISTRATIVE DISTRICTS / DIVISIONS

Mining Division Sault Ste. Marie
Land Titles/Registry Division ALGOMA
Ministry of Natural Resources District WAWA



TOPOGRAPHIC

- Administrative Boundaries
- Township
- Concession, Lot
- Provincial Park
- Indian Reserve
- Cliff, Pit & Pile
- Contour
- Mine Shafts
- Mine Headframe
- Railway
- Road
- Trail
- Natural Gas Pipeline
- Utilities
- Tower

Land Tenure

Freehold Patent

- Surface And Mining Rights
- Surface Rights Only
- Mining Rights Only

Leasehold Patent

- Surface And Mining Rights
- Surface Rights Only
- Mining Rights Only

Licence of Occupation

- Uses Not Specified
- Surface And Mining Rights
- Surface Rights Only
- Mining Rights Only
- Land Use Permit
- Order In Council (Not open for staking)
- Water Power Lease Agreement

Mining Claim

- 1234567
- Filed Only Mining Claims

LAND TENURE WITHDRAWALS

1234 Areas Withdrawn from Disposition

Mining Acts Withdrawal Types

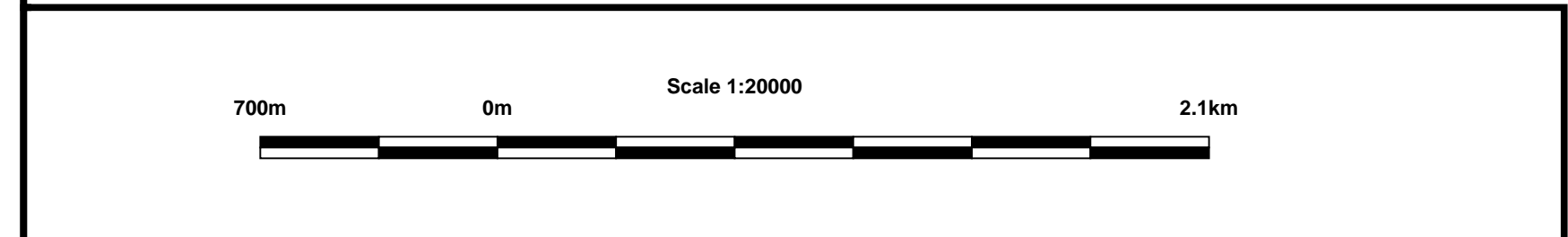
- Wsm Surface And Mining Rights Withdrawal
- Wm Surface Rights Only Withdrawal
- Wm Mining Rights Only Withdrawal

Order In Council Withdrawal Types

- W'sm Surface And Mining Rights Withdrawal
- W'm Surface Rights Only Withdrawal
- W'm Mining Rights Only Withdrawal

IMPORTANT NOTICES

NS



LAND TENURE WITHDRAWAL DESCRIPTIONS

Identifier	Type	Date	Description
2471	Wsm	Jan 1, 2001	43 4/10/72 64585 VOL 2

IMPORTANT NOTICES

Areas under which special regulation, limitations or conditions exist that affect normal prospecting, staking and mineral development activities.

Type	Description
SpCI	SPECIAL CIRCUMSTANCE - AREA UNDER REVIEW. PLEASE CONTACT THE PROVINCIAL RECORDING OFFICE FOR THE STATUS OF THE MINING AND SURFACE RIGHTS AVAILABILITY.

Those wishing to stake mining claims should consult with the Provincial Mining Recorder's Office of the Ministry of Northern Development and Mines for additional information on the status of the lands shown hereon. This map is not intended for navigational, survey, or land title determination purposes as the information shown on this map is compiled from various sources. Completeness and accuracy are not guaranteed. Additional information may also be obtained through the local Land Titles or Registry Office, or the Ministry of Natural Resources.

The information shown is derived from digital data available in the Provincial Mining Recorder's Office at the time of downloading from the Ministry of Northern Development and Mines web site.

General Information and Limitations

Contact Information:
Provincial Mining Recorder's Office
Willet Green Miller Center 933 Ramsey Lake Road
Sudbury ON P3E 6B5
Home Page: www.mndm.gov.on.ca/MNDMMINESLANDS/mismpggs.htm

Toll Free: 1 (888) 415-5845 ext 5742
Tel: 1 (877) 670-1444
Fax: 1 (877) 670-1444

Map Datum: NAD 83
Projection: UTM 16 degree
Topographic Data Source: Land Information Ontario
Mining Land Tenure Source: Provincial Mining Recorder's Office

This map may not show unregistered land tenure and interests in land including certain patents, leases, easements, right of ways, flooding rights, licenses, or other forms of disposition of rights and interest from the Crown. Also certain land tenure and land uses that restrict or prohibit free entry to stake mining claims may not be illustrated.