

Report on Assessment Work
Prospecting 22 January 2015 Claim 4209863
Effingham Township: Southern Ontario Mining Division
Work and Report by Robert D. Lawrence BSc, Exploration Geologist
LIC. 1002228, CLN 402122
Report Date 02 March 2015

ASSESSED CLAIM

Claim 4209863 is a one-unit claim in Effingham Township and not adjacent to any other mineral claims.

LOCATION OF CLAIMS AND KEY MAPS

The claims are approximately 40 km north of the town of Kaladar on Highway 7 -- and may be reached by traveling 42 km north on Highway 41 to the Machesney Lake Road. Follow the Machesney Lake Road west for 5 km to reach the claim's north boundary.



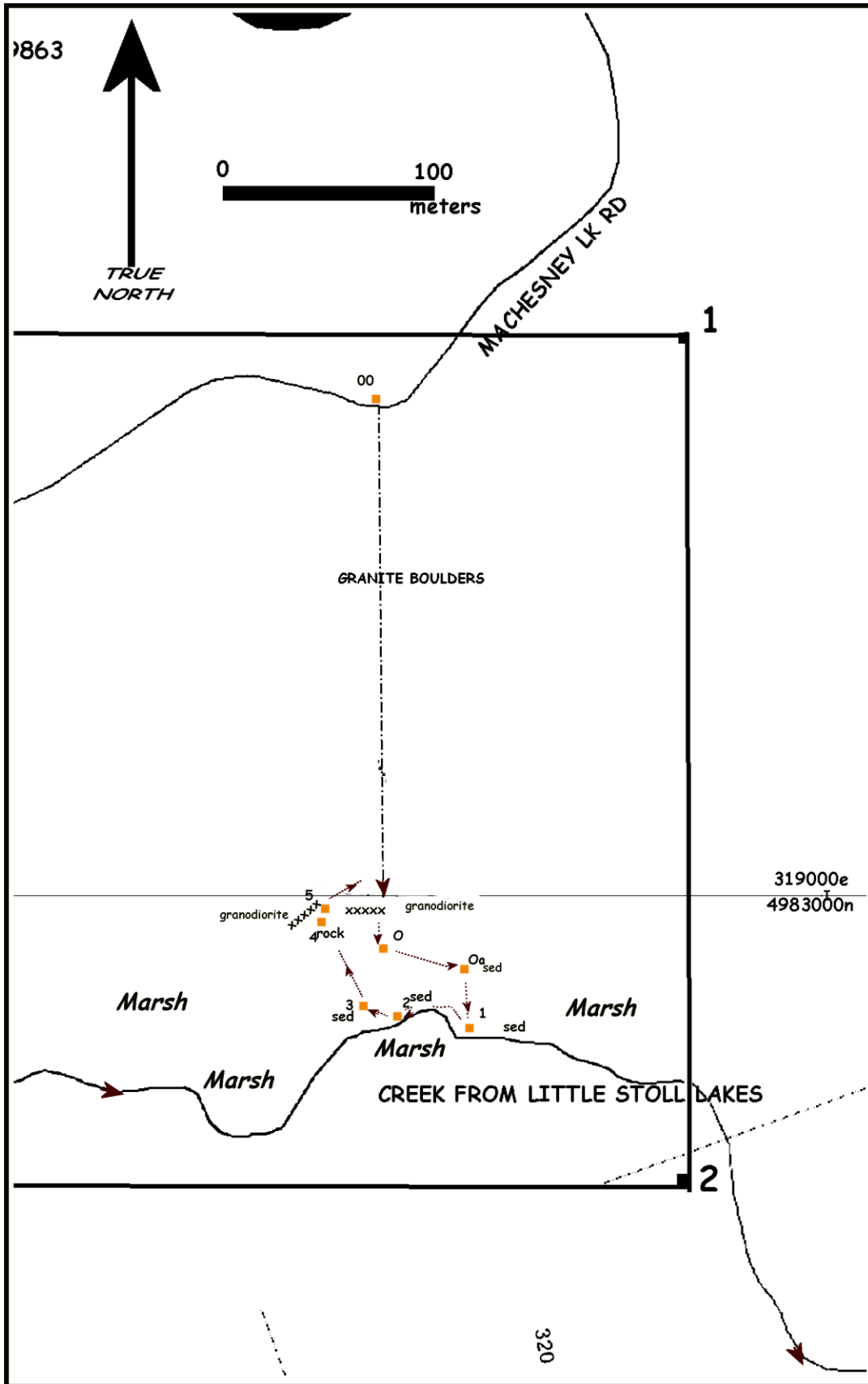
CLAIM 4209863 WEST OF STOLL LAKE IN EFFINGHAM TOWNSHIP

ASSESSMENT WORK

The work carried out on 22 January 2015 involved a snowshoe trek directly to the south of the claim where soil/ mud samples were taken close to the creek Little Stoll Lakes and Stoll Lake. A rock sample was taken from a granodiorite ledge a few meters north of the creek. My aim was to find microdiamonds in mud/soil samples.



MARSH IN SOUTH OF CLAIM 4209863



PROSPECTING CLAIM 4209863 22 JAN 2015



SOUTH FACE OF GRANODIORITE LEDGE ON NORTH SIDE OF MARSH

SAMPLES

I collected four mud/soil samples from the marsh north of the creek. The ground was solidly frozen and my aluminum probe collapsed taking the first sample. The next three samples I was taken in wet ground by the main creek flowing east into Stoll Lake.

At home I thawed and dried the samples and screened them to remove vegetation.

I examined the samples with a microscope.

The one rock sample was taken from the ledge on the north limit of the marsh/swamp. It is a piece of granodiorite similar to rocks I had previously sent for multi-element analysis so.

The mud/sand samples contain grains of quartz (mostly white) some dark grains of possible kimberlite and some particle that could be diamond.

Photos below show some of the particles. These were taken through the microscop eyepiece are rather poor quality.

SUMMARY OF SAMPLES TAKEN 22 JAN 2015						
SEQ#	UTM_ZONE 18T					
& MAP #	SAMPLE	EAST	NORTH	FEATURE		COMMENTS
POA	EFF043S	318830	4982966	FROZEN GROUND 30m N CREEK		VERY SMALL SILT SAMPLE
1	EFF108S	318832	4982938	WET GROUND BY CREEK		MUD&SAND
2	EFF107S	318797	4982943	WET GROUND BY CREEK		MUD&SAND
3	EFF109S	318782	4982948	WET GROUND BY CREEK		MUD&SAND
4	EFF110R	318760	4982986	2 m HIGH GRANODIOLITE LEDGE	EXTENDS E-W 20 m	ROCK PIECE FROM LEGGE FACE
THE THREE MUD&SAND SAMPLES WERE EXAMINED BY MICROSCOP						
SOME PHOTGRAPHS FOLLOW						
NOTHING CONCLUSIVE FOUND						
SOME PHOTGRAPHS FOLLOW						

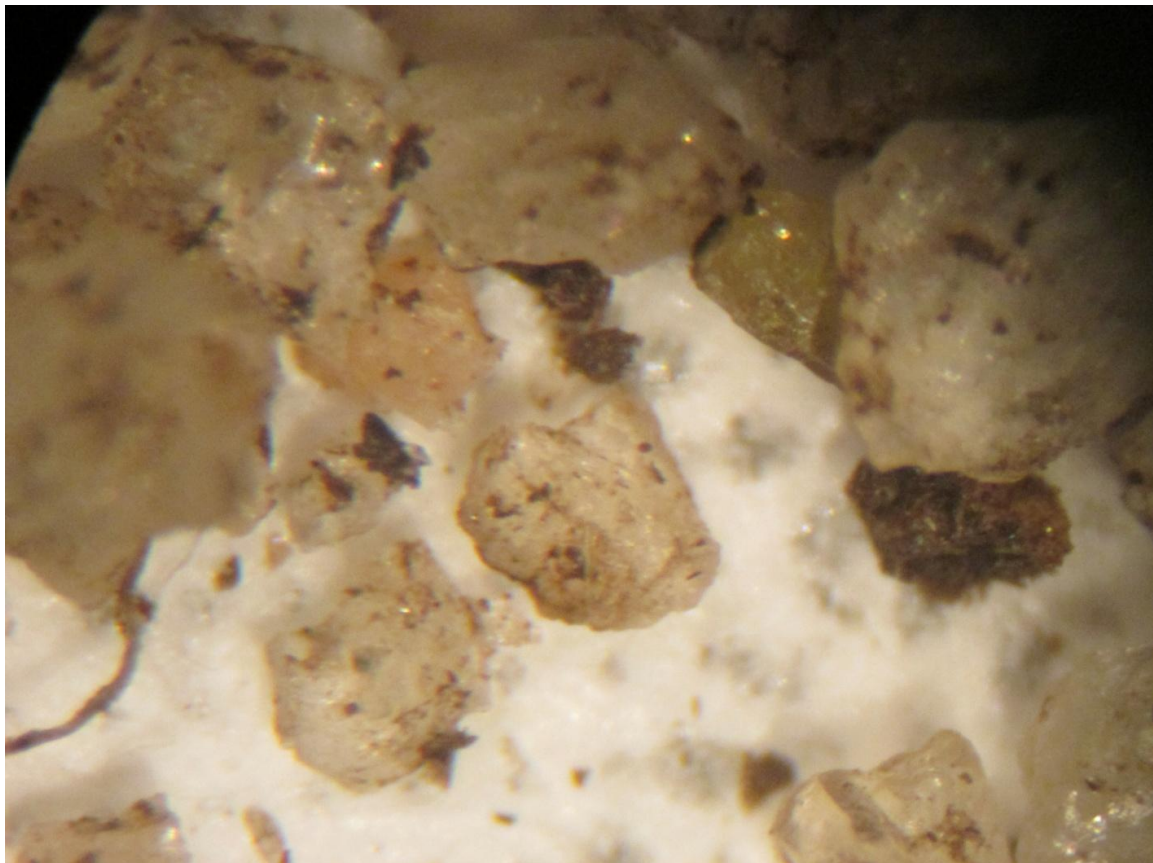


PHOTO THROUGH MICROSCOPE EYEPIECE OF PORTION OF SCREENED SAMPLE (1)

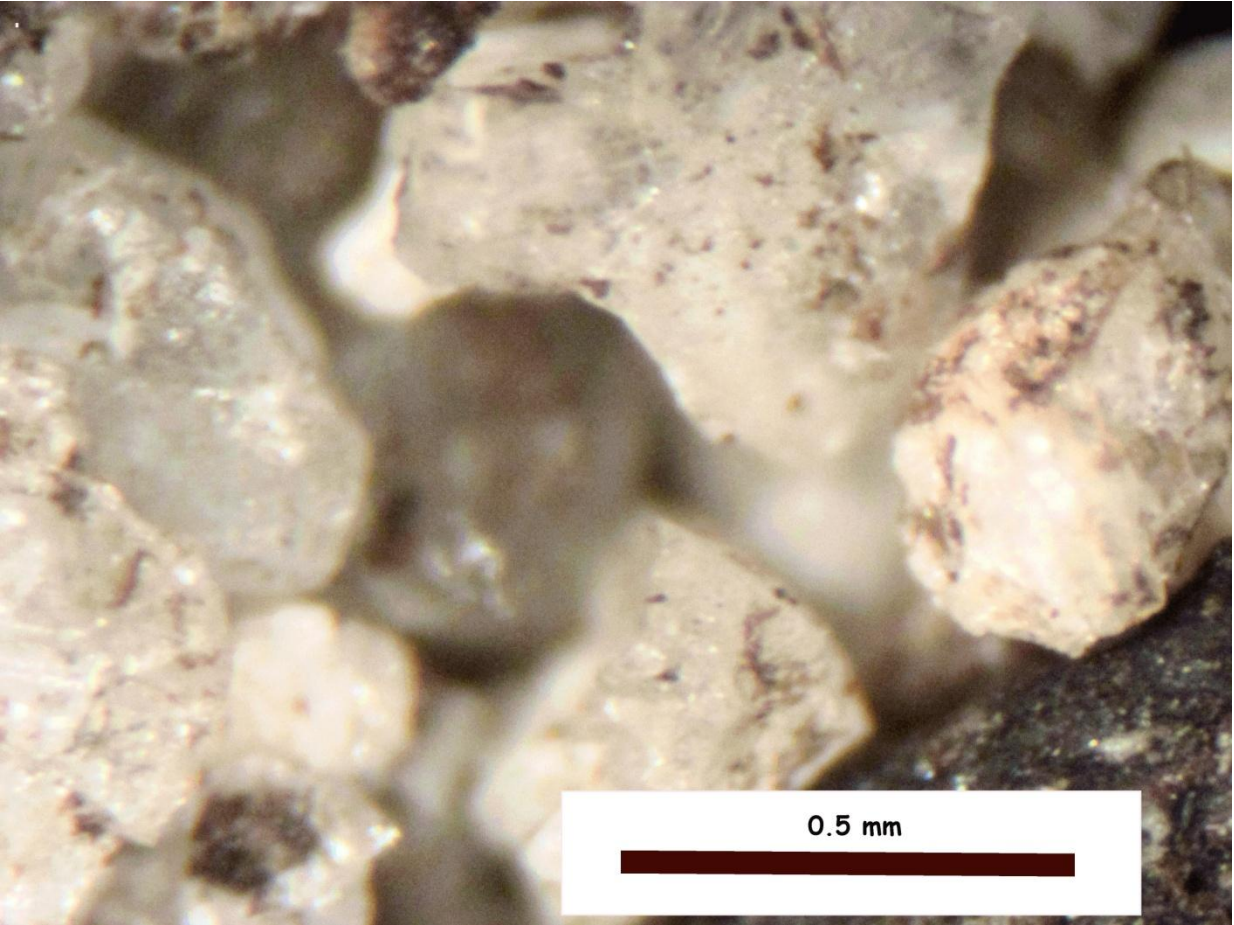


PHOTO THROUGH MICROSCOPE EYEPIECE OF PORTION OF SCREENED SAMPLE (2)

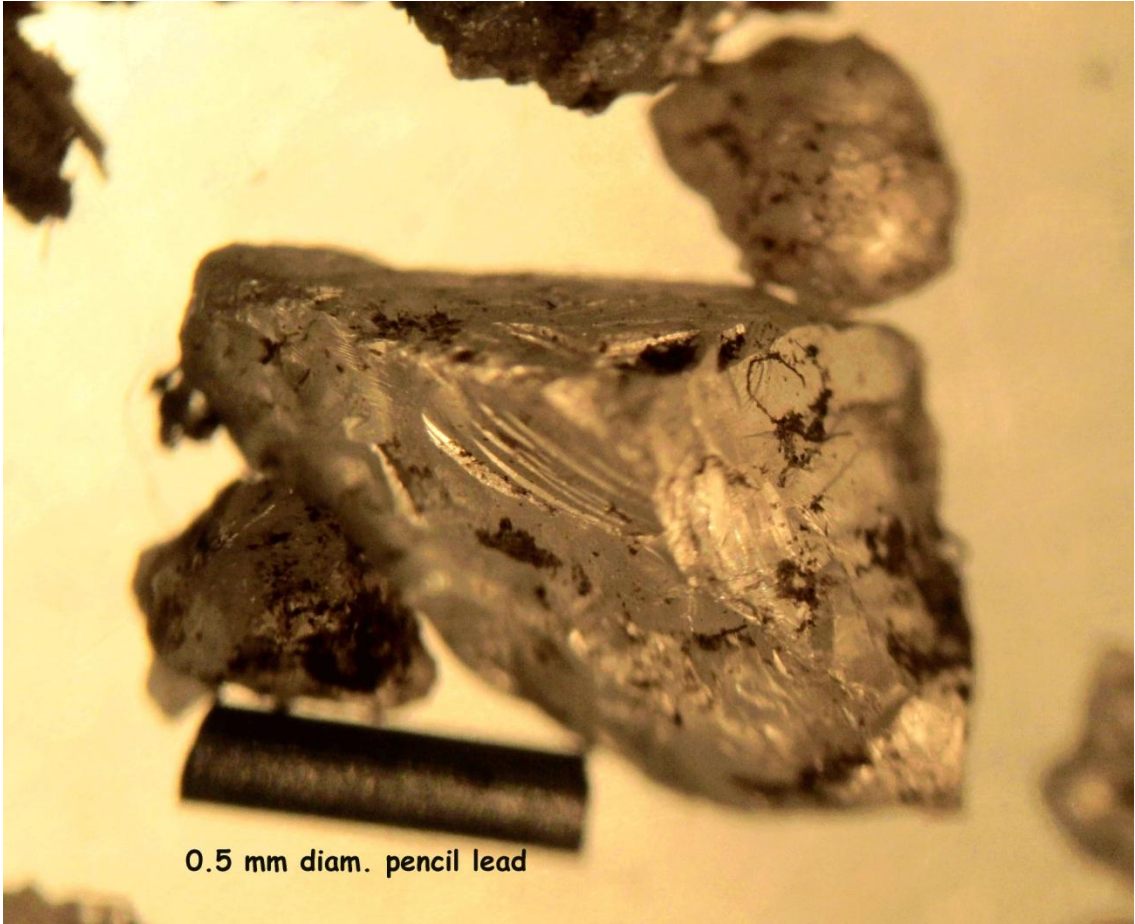


PHOTO THROUGH MICROSCOPE EYEPIECE OF PORTION OF SCREENED SAMPLE (3)



PIECE OF GRANODIORITE ROCK SAMPLE (ABOUT 5 cm ACROSS)

FINDINGS & CONCLUSIONS

All particles were less than 2 mm in size and most were about $\frac{3}{4}$ mm or less. Most grains were quartz but other minerals are present in small quantities. Some particles might be micro-diamonds but I cannot verify this guess.

I will return when the ground has thawed and collect larger particles.

ADMINISTRATION

I made one return trip from Wellington Ontario to Effingham Township to perform the assessment work on 22 January 2015. The roundtrip is a distance of about 350 km. No accommodation was required and food was \$40/day.

This report completed 2 March 2015..

Robert D. Lawrence, BSc



THAWING AND DRYING SAMPLES



DRIED SAMPLE PRIOR TO SCREENING



GEOGRAPHY, BEDROCK GEOLOGY.

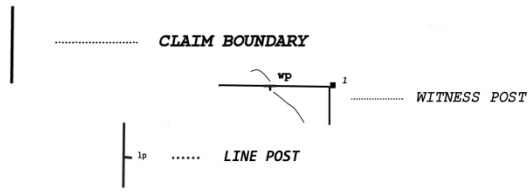
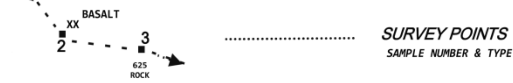
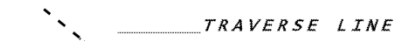
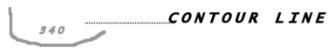
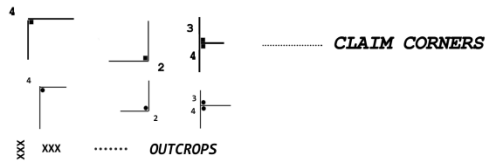
GEOGRAPHY

Within a radius of 5 km the area has several small lakes and bogs and rolling hills reaching an elevation of 350 m from valleys with elevations of about 315 m. The area is covered by coniferous and deciduous forest. The areas of swamp and bog contain alders, cranberry plants, grasses and reeds. There are several rock outcrops along the Machesney Lake Road and on the south and north shores of Machesney Lake. From the north a stream flows into the lake. During the spring a variety of small creeks also flow into the lake. The outlet of the lake is at the east end. Two small streams flow from the north and the west into the Little Stoll Lakes

BEDROCK GEOLOGY

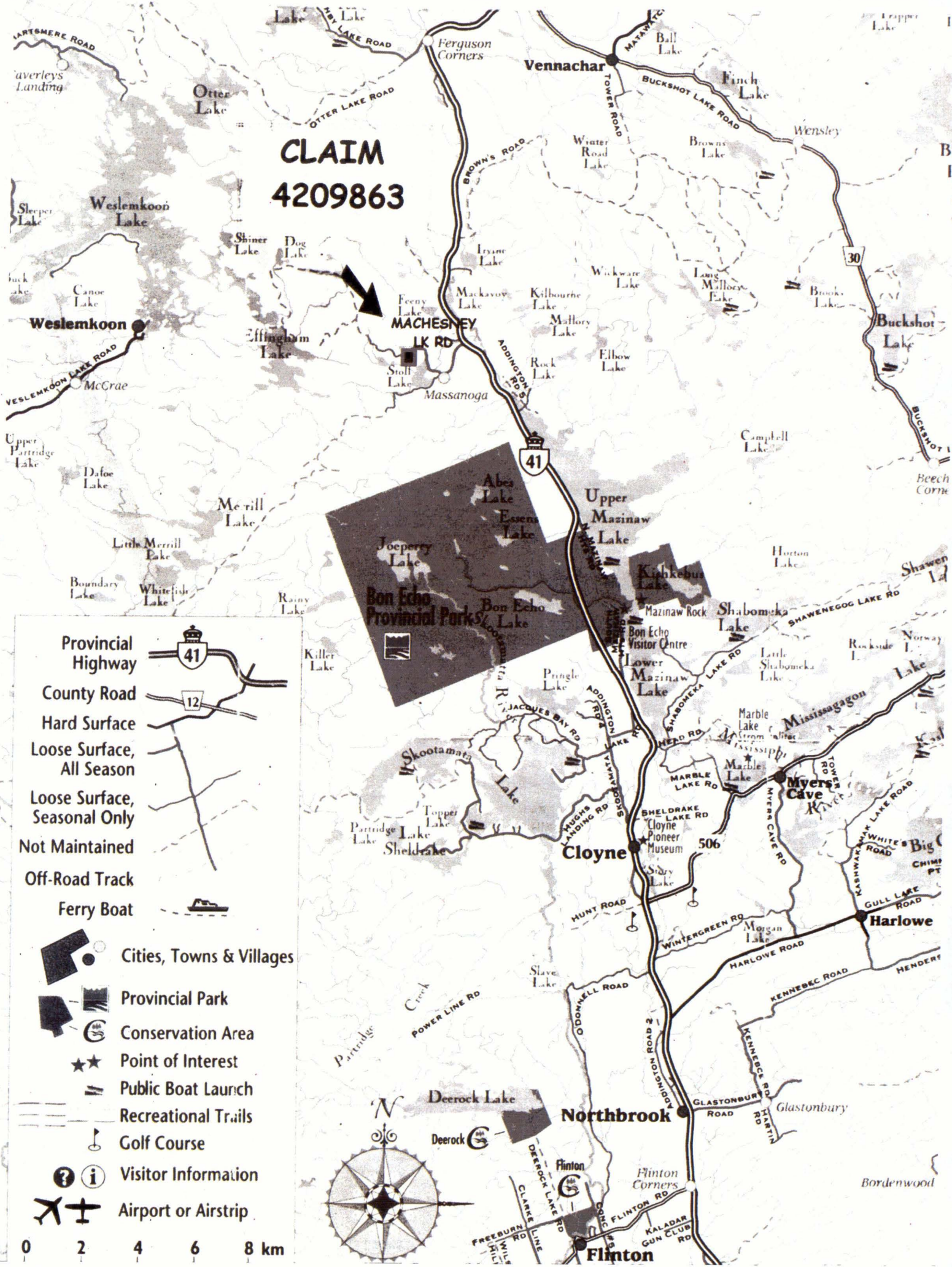
The claim is within the Weslemkoon Batholith. The rocks are mainly granodiorite. Within two km of claim 4209863. I have found examples of granite, granite pegmatite, granodiorite, kimberlite, granite gneiss, hornfels, basalt, tuff and syenite.

LEGEND FOR SYMBOLS USED ON PROSPECTING MAPS



PROSPECTING MAP LEGEND

CLAIM 4209863



Provincial Highway

County Road

Hard Surface

Loose Surface, All Season

Loose Surface, Seasonal Only

Not Maintained

Off-Road Track

Ferry Boat

Cities, Towns & Villages

Provincial Park

Conservation Area

Point of Interest

Public Boat Launch

Recreational Trails

Golf Course

Visitor Information

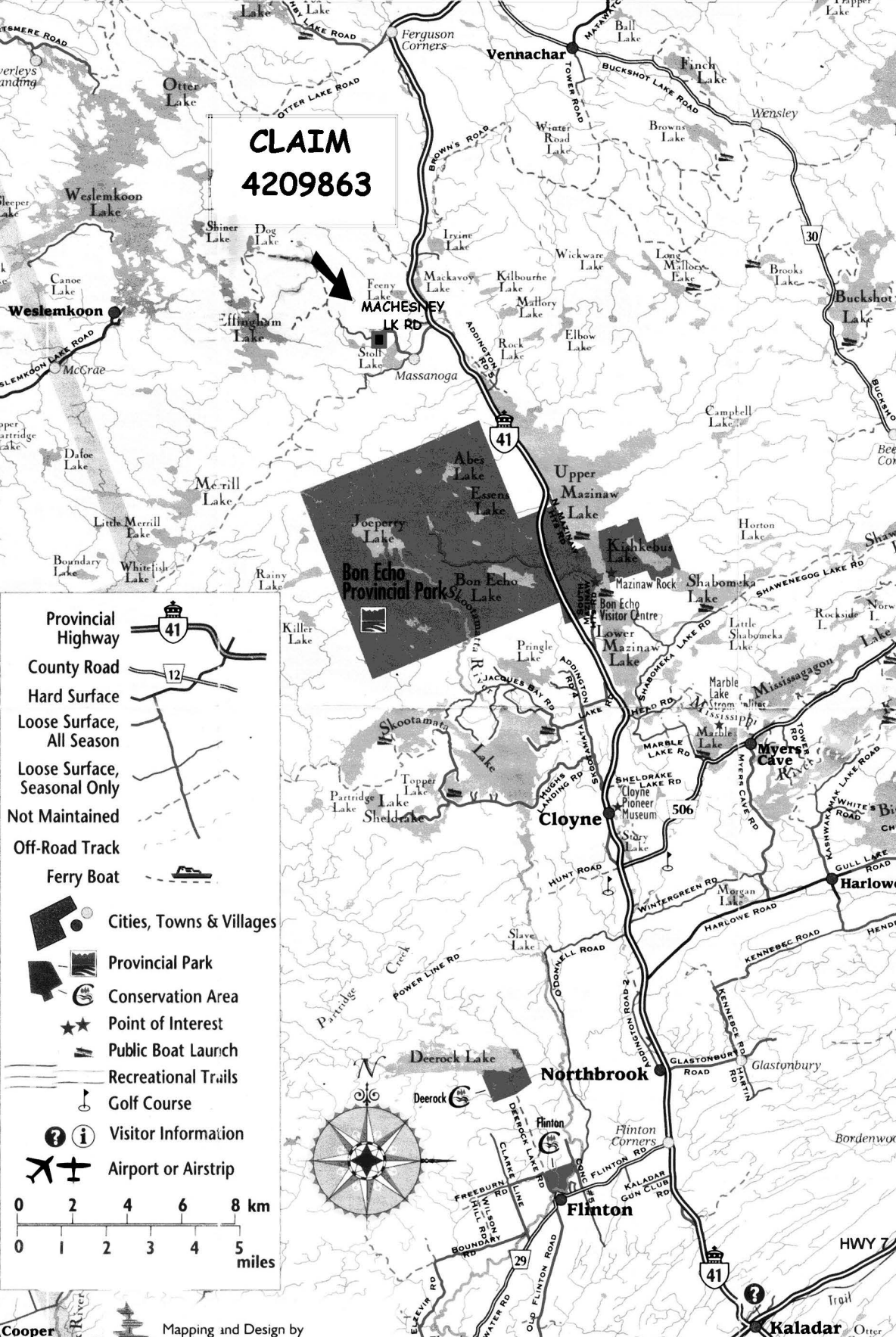
Airport or Airstrip

0 2 4 6 8 km



KALADAR HWY 41 NORTH TO MACHESNEY LAKE ROAD

**CLAIM
4209863**



Provincial Highway

County Road

Hard Surface

Loose Surface, All Season

Loose Surface, Seasonal Only

Not Maintained

Off-Road Track

Ferry Boat

Cities, Towns & Villages

Provincial Park

Conservation Area

Point of Interest

Public Boat Launch

Recreational Trails

Golf Course

Visitor Information

Airport or Airstrip

0 2 4 6 8 km

0 1 2 3 4 5 miles