

We are committed to providing [accessible customer service](#).
If you need accessible formats or communications supports, please [contact us](#).

Nous tenons à améliorer [l'accessibilité des services à la clientèle](#).
Si vous avez besoin de formats accessibles ou d'aide à la communication, veuillez [nous contacter](#).

PROSPECTING REPORT
COPPELL WEST PROPERTY
COPPELL TOWNSHIP,
PORCUPINE MINING DIVISION

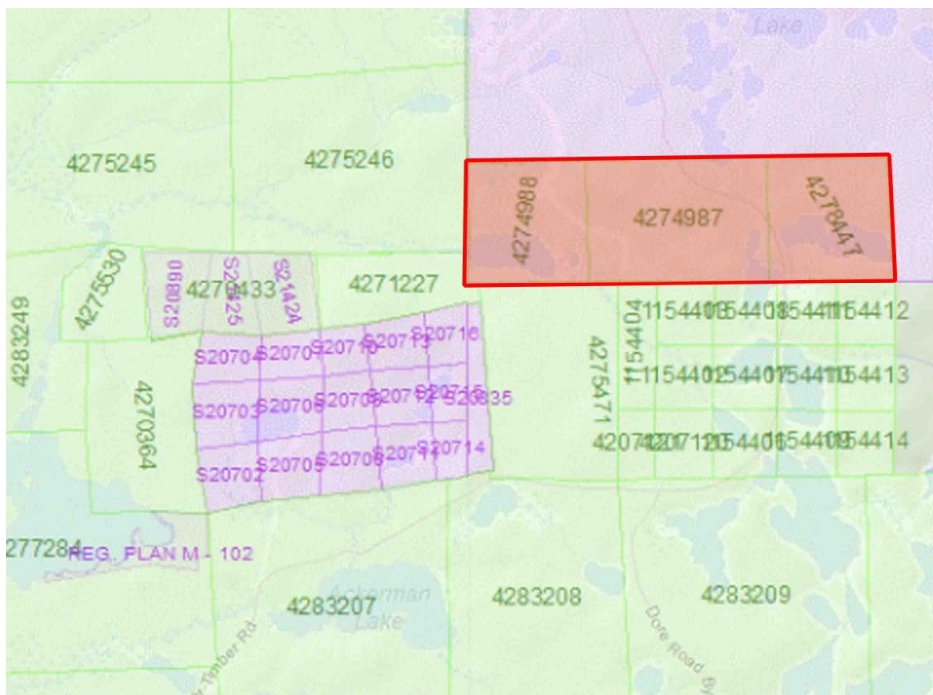


Table of Contents

Introduction	1
Location and Access	1
Prospecting Program	1
Program Results	1
Recommendations	2

Appendix

Statement of Qualifications
Sample Descriptions Table
Traverse and Sample Location Map
Assay Results Map
Assay Certificate

Introduction

The Coppel West Property is located in the southwest corner of Coppel Township. The property is comprised of 3 unpatented mining claims encompassing 14 claim units. It is situated on strike with the projected northeast extension of the auriferous quartz-carbonate vein system at the Kenty Mine property (21 known veins to date). The following report describes three days of prospecting on the claims. No significant results were obtained from the present limited program.

Location and Access

The Coppel West Property is located approximately 45 km's south of the village of Foleyet. It is road accessible by travelling west along provincial highway 101 from Timmins and then turning south on the Foleyet Timber Road, an all-weather gravel surface road. The Foleyet Timber Road transects the property at approximately mileage 33.

Prospecting Program

On July 17, 2016, Shelly Moretti, Randall Salo and Jacques Robert traversed the northwestern part of the claim group. On July 20 and 21, Randall Salo and Jacques Robert traversed north-central and northeastern parts of the property (see appended traverse map). In total, 4.8 km of traverse was completed with nine rock samples and two humus "B" horizon soil samples collected and sent for analyses of their gold content by fire assay method at Activation Laboratories in Timmins.

Program Results

The soil samples realized detectable gold concentrations of 5 and 6 ppb. One rock sample, 170826, gave a gold concentration at detection limit; 5 ppb. All other samples were below detection limit. Metasedimentary strata were encountered during the program, dominated by mudstone beds striking at 105-110 degrees, and a gabbroic unit was noted in the north central part of the property seemingly with a south contact sub-parallel to the sedimentary beds.

Recommendations

Continued prospecting is recommended in the southwestern part of the property in the vicinity of a small lake. This location is on strike with north trending visible gold bearing quartz-carbonate veins existing proximally to the south in Dore Township as well as being on strike with the Kenty Mine mineralization striking at approximately 60 degrees east of north.

Sincerely,



Randall Salo

August 1, 2016

APPENDIX

Statement of Qualifications

I, Randall W. Salo of 800 Gervais Street North, Porcupine, Ontario do hereby certify that I:

- am a graduate of Lakehead University with an Honours Bachelor degree in Geology/Physics (1998).
- have been involved and working in mining exploration for more than 30 years in Canada, Mexico and Asia.
- am a member of the Association of Professional Geoscientists of Ontario with member number 1265.
- have included in this report all relevant data derived from both personal and public sources.
- have been physically on the property and have expressed personal opinions in this report.

Sincerely disclosed,

A handwritten signature in black ink that reads "Randall W. Salo". The signature is written in a cursive style with a large initial 'R' and a distinct 'S'.

Randall W. Salo, P.Geo.

August 1, 2016

Table 1: Sample Descriptions

Sample #	UTM Easting	UTM Northing	Sample Description	Assay Result (g/t Au)
170824	382007	5300089	humus "B" horizon	5
170825	381951	5300100	humus "B" horizon	6
170826	381641	5300175	float, fine-grained metasediment, mudstone, 2% fg pyrite associated with late calcite filled veinlets <2 mm,	5
170827	381660	5300215	float, fine-grained metasediment, mudstone, 2% fg pyrite associated with late calcite filled veinlets <2 mm,	<5
170828	381615	5300255	outcrop, mudstone, bedding at 105 deg., weak effervescence, non-magnetic	<5
170829	381613	5300255	mudstone, moderate effervescence, 2% fg py	<5
170830	381600	5300297	mudstone, strong effervescence, non-magnetic, 1% fg py	<5
170831	381583	5300547	mudstone, euhedral calcite crystals up to 1 cm, tr. Py	<5
170832	381620	5300668	mudstone, >5% disseminated fg py cubes and veinlets	<5
OC	383025	5300803	mudstone outcrop, weakly sheared at 0/180, tr. vfg py	NA
170833	380898	5300663	mudstone, 3% vfg py cubes	<5
OC	381676	5300718	gabbroic unit, strongly magnetic, no visible sulfide,	NA
170834	380890	5300693	mudstone, soft sediment deformation/bx, 3-5% fg dissem py cubes	<5
OC	381069	5300575	mudstone, bedding at 110 deg., tr. Fg dissem py cubes	NA
OC	381035	5300710	mudstone, bedding at 110 deg., tr. Fg dissem py cubes	NA

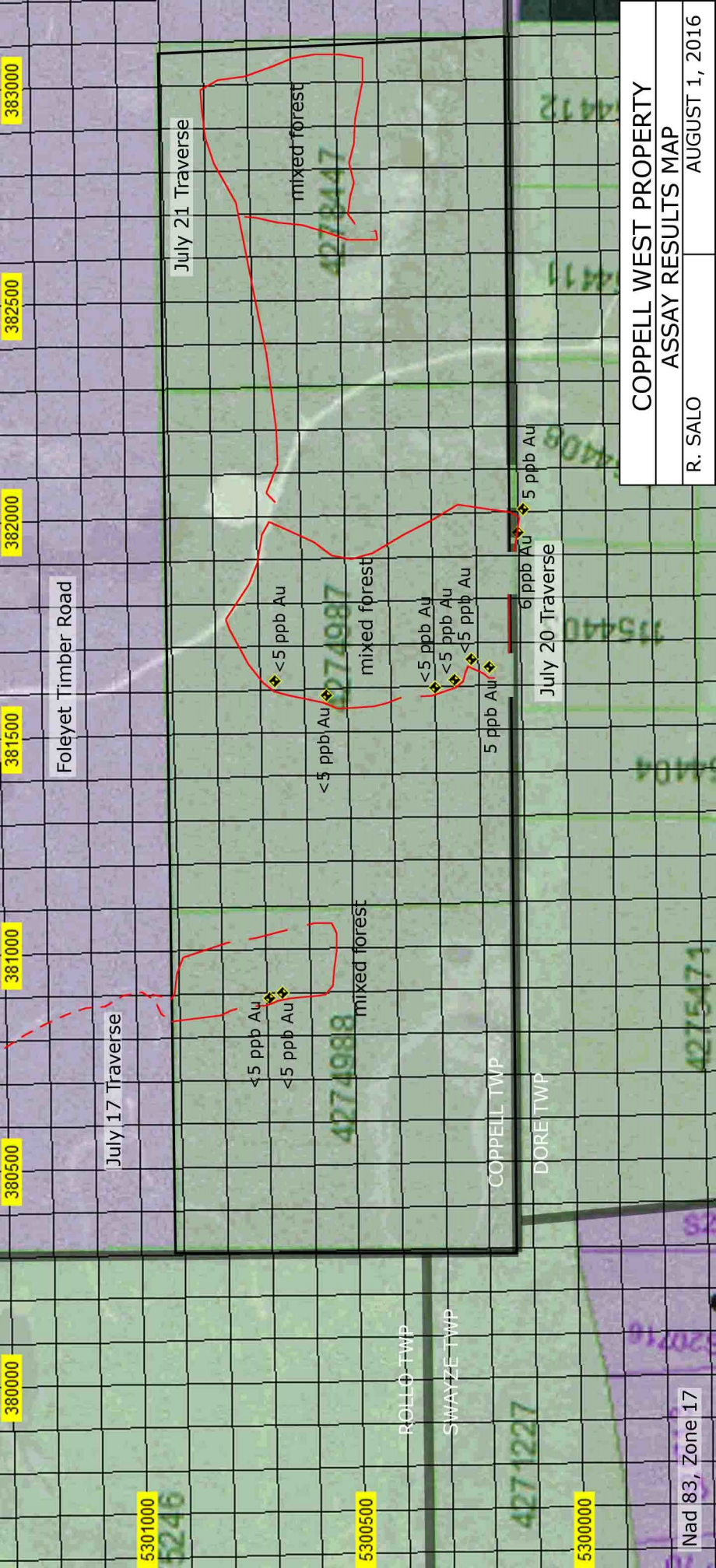
OC= outcrop

NA= not applicable

NAD 83, Zone 17



COPPELL WEST PROPERTY
TRAVERSE AND SAMPLE LOCATION MAP
 R. SALO
 AUGUST 1, 2016



380000 380500 381000 381500 382000 382500 383000

5301000

5300500

5300000

Foleyet Timber Road

July 17 Traverse

July 21 Traverse

July 20 Traverse

<5 ppb Au
<5 ppb Au

<5 ppb Au

<5 ppb Au

<5 ppb Au
<5 ppb Au
<5 ppb Au

COPPELL TWP

DORE TWP

5 ppb Au

6 ppb Au

5 ppb Au

mixed forest

mixed forest

ROLLO TWP

SWAYZE TWP

COPPELL WEST PROPERTY
ASSAY RESULTS MAP

Nad 83, Zone 17

R. SALO

AUGUST 1, 2016



Date Submitted: 25-Jul-16
Invoice No.: A16-07196
Invoice Date: 28-Jul-16
Your Reference: COPPELL WEST

Rock N Roll Prospecting Inc
Porcupine Ontario P0N 1C0
Canada

ATTN: Randall Salo

CERTIFICATE OF ANALYSIS

11 Rock samples were submitted for analysis.

The following analytical package(s) were requested:

Code 1A2-Timmins Au - Fire Assay AA

REPORT **A16-07196**

This report may be reproduced without our consent. If only selected portions of the report are reproduced, permission must be obtained. If no instructions were given at time of sample submittal regarding excess material, it will be discarded within 90 days of this report. Our liability is limited solely to the analytical cost of these analyses. Test results are representative only of material submitted for analysis.

Notes:

If value exceeds upper limit we recommend reassay by fire assay gravimetric-Code 1A3.

CERTIFIED BY:

A handwritten signature in black ink, appearing to be "Emmanuel Esemé". The signature is written in a cursive style with some loops and flourishes.

Emmanuel Esemé , Ph.D.
Quality Control

ACTIVATION LABORATORIES LTD.
1752 Riverside Drive, Timmins, Ontario, Canada, P4R 1N1
TELEPHONE +705 264-0123 or +1.888.228.5227 FAX +1.905.648.9613
E-MAIL Timmins@actlabs.com ACTLABS GROUP WEBSITE www.actlabs.com

Analyte Symbol	Au
Unit Symbol	ppb
Lower Limit	5
Method Code	FA-AA
170824	5
170825	6
170826	5
170827	< 5
170828	< 5
170829	< 5
170830	< 5
170831	< 5
170832	< 5
170833	< 5
170834	< 5

Analyte Symbol	Au
Unit Symbol	ppb
Lower Limit	5
Method Code	FA-AA
SF85 Meas	837
SF85 Cert	848
OxD128 Meas	402
OxD128 Cert	424.000
170833 Orig	7
170833 Dup	< 5
170834 Orig	< 5
170834 Split PREP DUP	7
Method Blank	< 5
Method Blank	< 5