



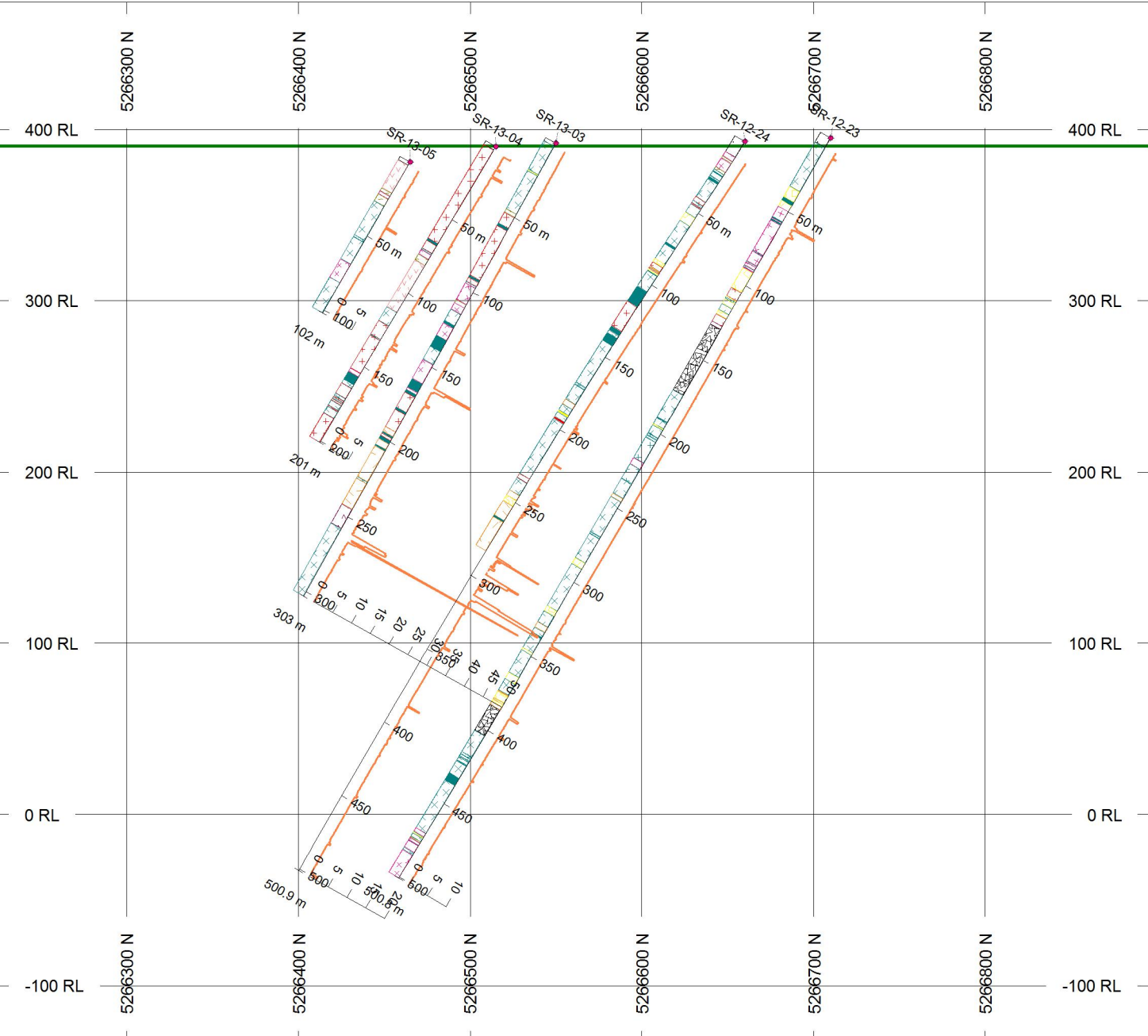
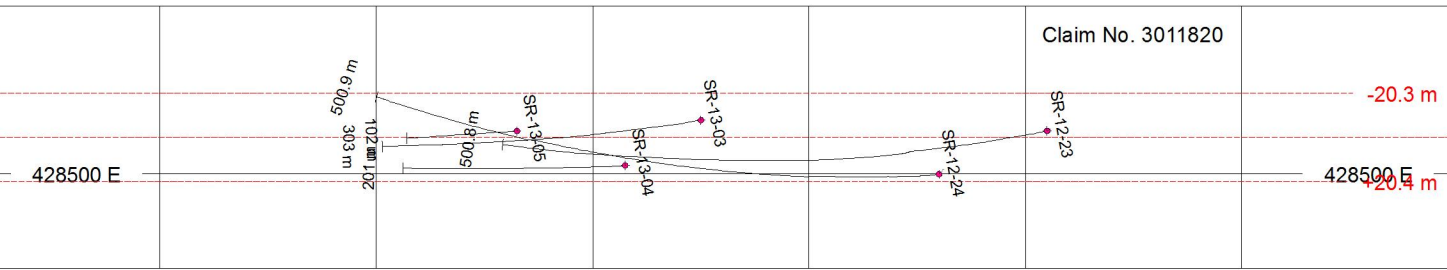
SANATANA RESOURCES Inc.

HOLES PLOTTED

TOTAL 5

SR-12-23	SR-12-24	SR-13-03	SR-13-04	SR-13-05
Azimuth: 170	Azimuth: 170	Azimuth: 170	Azimuth: 170	Azimuth: 170
Dip: -60	Dip: -60	Dip: -60	Dip: -60	Dip: -60

Claim No. 3011820



TOPOGRAPHY (Elevation recorded in Meters (m))

DEM_Topo.fit

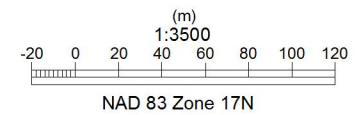
PROFILES Au g/t

L/R R

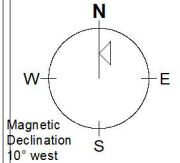
COL

ROCK CODES	PAT	LABEL	DESCRIPTION
LithoCoding	[Pattern]	BX	breccia
	[Pattern]	FPY	feldspar porphyry
	[Pattern]	FRK	felsic schist
	[Pattern]	GAB	gabbro
	[Pattern]	GRD	granodiorite
	[Pattern]	IVOL	intermediate volcanic
	[Pattern]	LPY	lamprophyre
	[Pattern]	MIRK	mafic intrusive
	[Pattern]	MIRK	mafic dike
	[Pattern]	MTRK	magnetite granite
	[Pattern]	QFPY	quartz feldspar porphyry
	[Pattern]	QZD	quartz diorite
	[Pattern]	SCHT	schist
	[Pattern]	OVB	Overburden
	[Pattern]	DIA	diabase
	[Pattern]	SHR	shear zone

SCALE



AZIMUTH = 0°



Sanatana Resources Inc.
 Watershed Property
 Phase 3 Drilling Sections
 DDH: SR-12-23/24 & SR-13-03/04/05

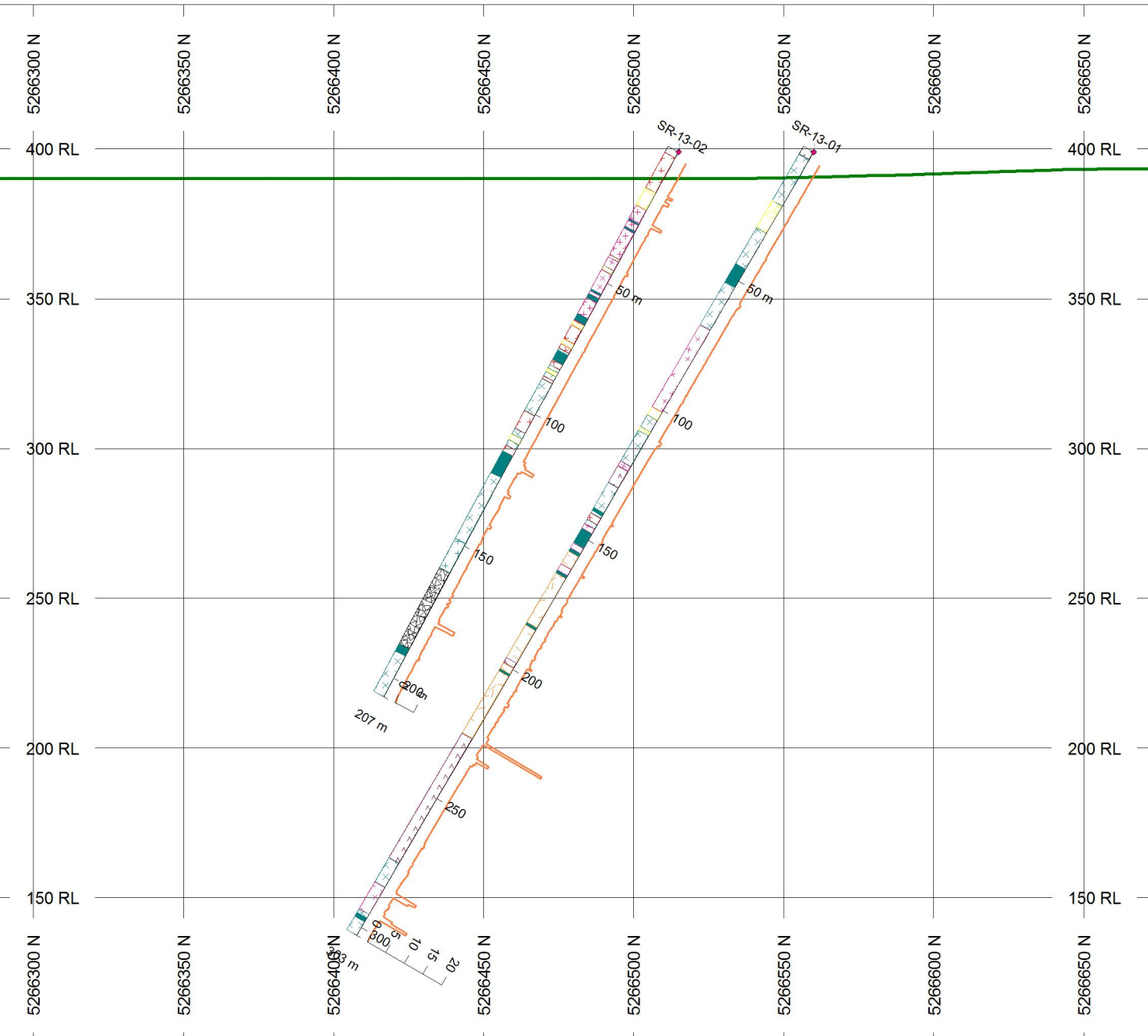
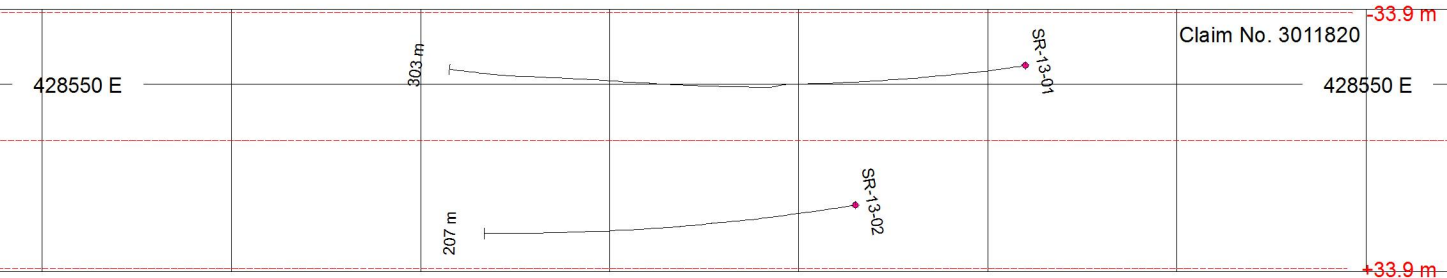


HOLES PLOTTED

TOTAL 2

SR-13-01 Azimuth: 170 Dip: -60
 SR-13-02 Azimuth: 170 Dip: -60

Claim No. 3011820

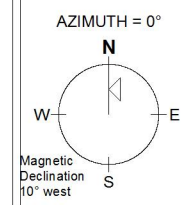
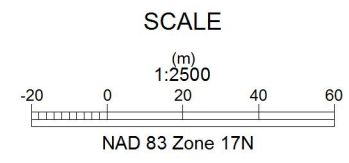


TOPOGRAPHY (Elevation recorded in Meters (m))

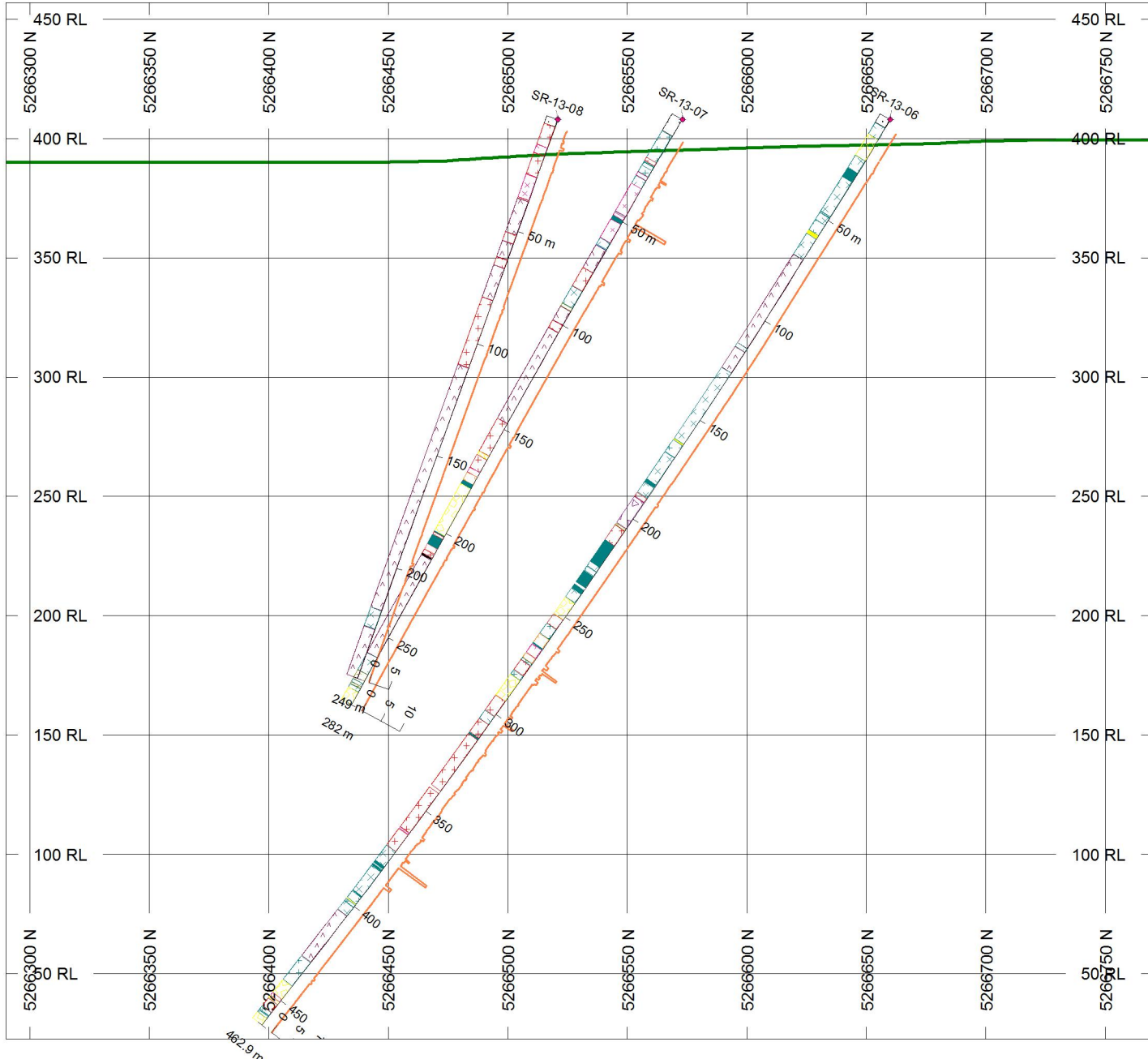
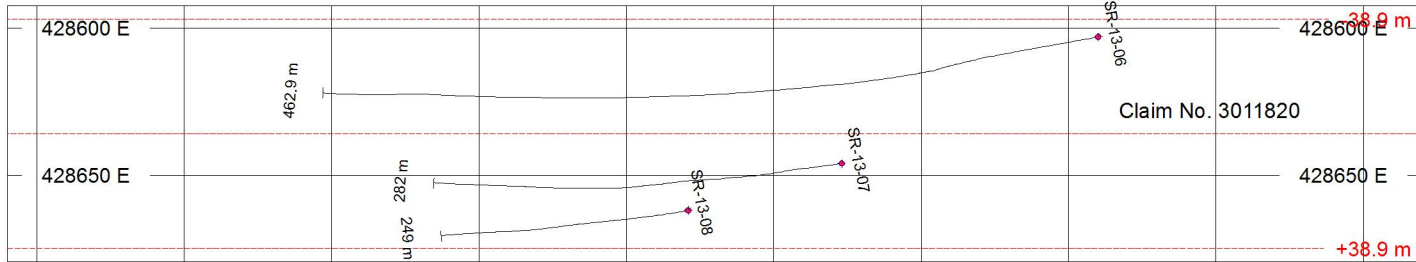
DEM_Topo.fit

PROFILES L/R COL
 Au g/t R

ROCK CODES	PAT	LABEL	DESCRIPTION
LithoCoding			
		BX	breccia
		DRT	diorite
		FPY	feldspar porphyry
		GAB	gabbro
		GRD	granodiorite
		MIRK	mafic intrusive
		MRK	mafic dike
		MTRK	magnetite granite
		QZD	quartz diorite
		SCHT	schist
		OVB	Overburden
		DIA	diabase



Sanatana Resources Inc.
Watershed Property
Phase 3 Drilling Sections
DDH: SR-13-01 & SR-13-02



HOLES PLOTTED
TOTAL 3

SR-13-06 Azimuth: 170 Dip: -60	SR-13-07 Azimuth: 170 Dip: -60	SR-13-08 Azimuth: 170 Dip: -70
--------------------------------------	--------------------------------------	--------------------------------------

TOPOGRAPHY (Elevation recorded in Meters (m))

DEM_Topo.fit

PROFILES	L/R	COL
Au g/t	R	

ROCK CODES	PAT	LABEL	DESCRIPTION
LithoCoding	[Pattern]	DRT	diorite
	[Pattern]	FPY	feldspar porphyry
	[Pattern]	FRK	felsic schist
	[Pattern]	GAB	gabbro
	[Pattern]	GRD	granodiorite
	[Pattern]	IVOL	intermediate volcanic
	[Pattern]	LPY	lamprophyre
	[Pattern]	MIRK	mafic intrusive
	[Pattern]	MRK	mafic dike
	[Pattern]	MTRK	magnetite granite
	[Pattern]	QHBX	quartz-hematite breccia
	[Pattern]	QZD	quartz diorite
	[Pattern]	QZVN	quartz vein
	[Pattern]	SCHT	schist
	[Pattern]	TNL	tonalite
	[Pattern]	OVB	Overburden
	[Pattern]	FLT	Fault zone/gouge
	[Pattern]	DIA	diabase

SCALE

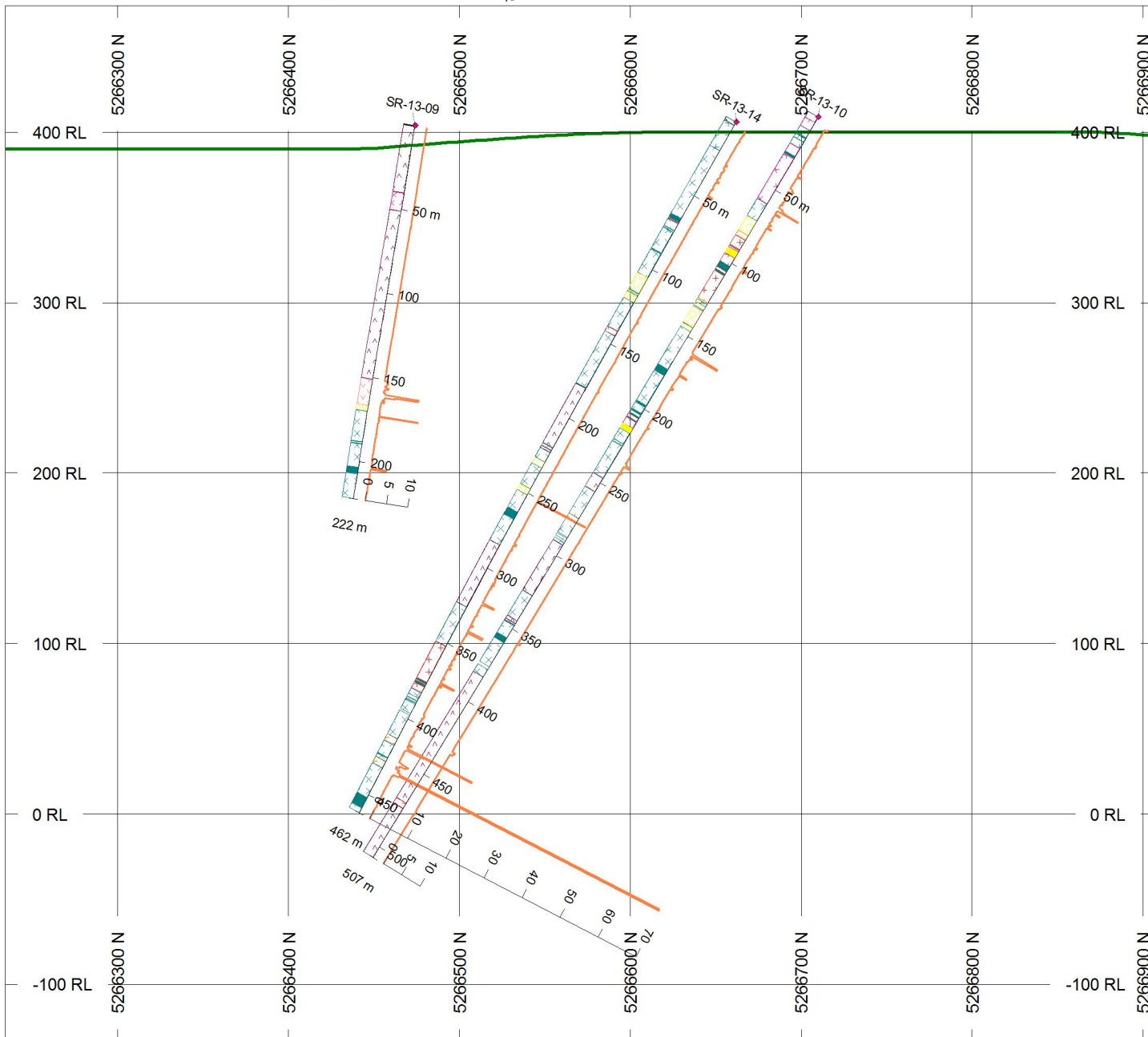
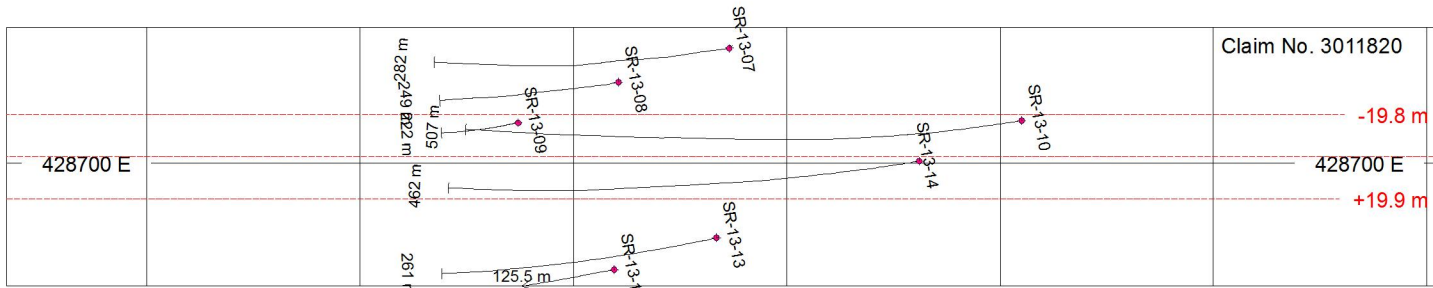

(m)
1:2500

NAD 83 Zone 17N

AZIMUTH = 0°

Magnetic Declination 10° west

Sanatana Resources Inc.
Watershed Property
Phase 3 Drilling Sections
DDH: SR-13-06 & SR-13-07 & SR-13-08

Holes Plotted

TOTAL 3

SR-13-09	SR-13-10	SR-13-14
Azimuth: 170	Azimuth: 170	Azimuth: 170
Dip: -60	Dip: -60	Dip: -60

TOPOGRAPHY (Elevation recorded in Meters (m))

DEM_Topo.fit

PROFILES	L/R	COL
Au g/t	R	

ROCK CODES	PAT	LABEL	DESCRIPTION
LithoCoding	[Pattern]	FPY	feldspar porphyry
	[Pattern]	FRK	felsic schist
	[Pattern]	GAB	gabbro
	[Pattern]	GRD	granodiorite
	[Pattern]	IVOL	intermediate volcanic
	[Pattern]	LPY	lamprophyre
	[Pattern]	MIRK	mafic intrusive
	[Pattern]	MRK	mafic dike
	[Pattern]	MTRK	magnetite granite
	[Pattern]	QZD	quartz diorite
	[Pattern]	SCHT	schist
	[Pattern]	OVB	Overburden
	[Pattern]	DIA	diabase

SCALE

(m)

1:2500

NAD 83 Zone 17N

SCALE BAR: 0, 20, 40, 60, 80, 100, 120

AZIMUTH = 0°

Compass rose showing North (N), South (S), East (E), and West (W). Magnetic Declination 10° west.

Sanatana Resources Inc.

Watershed Property

Phase 3 Drilling Sections

DDH: SR-13-09 & SR-13-10 & SR-13-14



SANATANA RESOURCES Inc.

HOLES PLOTTED

TOTAL 3

SR-13-11 Azimuth: 170 Dip: -80
SR-13-12 Azimuth: 170 Dip: -70
SR-13-13 Azimuth: 170 Dip: -60

Claim No. 3011820

-21.2 m

+21.2 m

428750 E

428750 E

261 m
231 m
201 m

SR-13-11

SR-13-12

SR-13-13

5266350 N
5266400 N
5266450 N
5266500 N
5266550 N
5266600 N
5266650 N

400 RL

400 RL

350 RL

350 RL

300 RL

300 RL

250 RL

250 RL

200 RL

200 RL

150 RL

150 RL

5266350 N
5266400 N
5266450 N
5266500 N
5266550 N
5266600 N
5266650 N

201 m
231 m
10 15 20 25 30 35 40 45
50 m
100
150
200

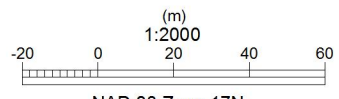
TOPOGRAPHY (Elevation recorded in Meters (m))

DEM_Topo.fit

PROFILES L/R COL
Au g/t R

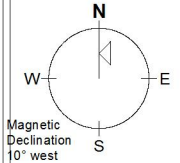
ROCK CODES	PAT	LABEL	DESCRIPTION
LithoCoding			
		BX	breccia
		FPY	feldspar porphyry
		FRK	felsic schist
		GAB	gabbro
		GRD	granodiorite
		LPY	lamprophyre
		MIRK	mafic intrusive
		MRK	mafic dike
		MTRK	magnetite granite
		QZD	quartz diorite
		SCHT	schist
		OVB	Overburden
		FLT	Fault zone/gouge
		DIA	diabase

SCALE



NAD 83 Zone 17N

AZIMUTH = 0°



Sanatana Resources Inc.
Watershed Property
Phase 3 Drilling Sections
DDH: SR-13-11 & SR-13-12 & SR-13-13