



**CANADIAN EXPLORATION SERVICES LTD**

PO Box 219, 14579 Government Road, Larder Lake, Ontario, P0K 1L0, Canada  
Phone (705) 643-2345 Fax (705) 643-2191 www.cxsltd.com

---

# **SKEAD HOLDINGS LTD.**

## **Prospecting**

## **On the**

## **Blamey Property**

# **Blamey Township, Ontario**

## TABLE OF CONTENTS

<b>1.</b>	<b>SURVEY DETAILS .....</b>	<b>3</b>
1.1	PROJECT NAME.....	3
1.2	CLIENT .....	3
1.3	LOCATION .....	3
1.4	ACCESS.....	4
1.5	PREVIOUS WORK .....	4
1.6	GENERAL GEOLOGY .....	4
<b>2.</b>	<b>SURVEY WORK UNDERTAKEN.....</b>	<b>5</b>
2.1	SURVEY LOG.....	5
2.2	PERSONNEL .....	5
2.3	TRAVERSE SPECIFICATIONS .....	5
<b>3.</b>	<b>OVERVIEW OF SURVEY RESULTS.....</b>	<b>6</b>
3.1	DAY-1 – NOVEMBER 6, 2014.....	6

## LIST OF APPENDICES

**APPENDIX A: STATEMENT OF QUALIFICATIONS**

**APPENDIX B: INSTRUMENT SPECIFICATIONS**

**APPENDIX C: LIST OF MAPS (IN MAP POCKET)**

## LIST OF TABLES AND FIGURES

Figure 1: Location of the - Blamey Property .....	3
Figure 2: Picture of Sample 34401 .....	6
Figure 3: Picture of Sample 34402 .....	7
Figure 4: Picture of Sample 34403 .....	8
Figure 5: Picture of Sample 34404 .....	9
Figure 6: Picture of Sample 34405 .....	10
Figure 7: Picture of Sample 34406 .....	11
Figure 8: Picture of Sample 34407 .....	12
Figure 9: Picture of Sample 34451 .....	13
Figure 10: Picture of Sample 34452 .....	14
Figure 11: Picture of Sample 34453 .....	15
Figure 12: Picture of Sample 34454 .....	16
Figure 13: Picture of Sample 34455 .....	17
Figure 14: Picture of Sample 34456 .....	18
Figure 15: Picture of Sample 34457 .....	19

---

Figure 16: Picture of Sample 34458 .....	20
Figure 17: Picture of Sample 34459 .....	21
Figure 18: Picture of Sample 34460 .....	22
Figure 19: Picture of Sample 34461 .....	23
Table 1: Survey Log .....	5

## 1. SURVEY DETAILS

### 1.1 PROJECT NAME

This project is known as the **Blamey Property**.

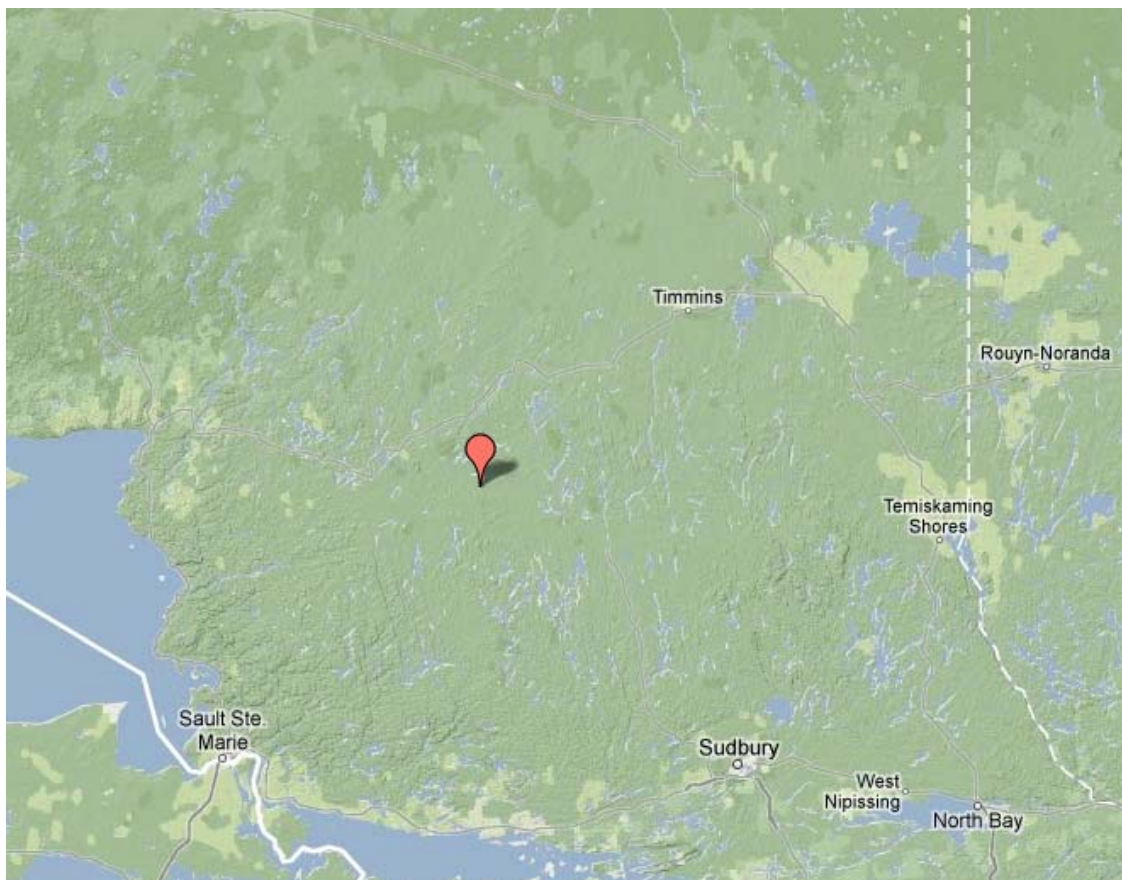
### 1.2 CLIENT

SKEAD HOLDINGS LTD.

28 Ford St.  
Sault Ste. Marie, Ontario  
P6A 4N4

### 1.3 LOCATION

The Blamey Property is located in Blamey Township approximately 10km northeast of Sault, Ontario. The survey area covers claims numbered 4259257 and 4259273, located in Blamey Township, within the Porcupine Mining Division.



**Figure 1: Location of the - Blamey Property**

---

## 1.4 ACCESS

Access to the property was attained with a 4x4 truck on Highway 129 for approximately 28 km southeast from the Town of Chapleau to Regional Rd 667 for approximately 47km east. From that point, a forestry access road was travelled an additional 7 kilometers. The final 6 kilometers was travelled by ATV.

## 1.5 PREVIOUS WORK

1968 – Canadian Nickel Company Limited – 2 holes totaling 321 feet

1983 – Noranda Exploration Company Limited – Magnetometer and HLEM surveys

1984 – Noranda Exploration Company Limited – Geological mapping

1993 – Noranda Exploration Company Limited – Reconnaissance Geochemistry and Geology

## 1.6 GENERAL GEOLOGY

The area is underlain by folded and faulted rock units consisting of a chert-argillite assemblage sandwiched between a felsic volcanic footwall and mafic volcanic hanging wall. All units have been intruded by ultramafic to felsic dikes, sills and plugs. The chert-argillite assemblage is split into an upper and lower unit by the presence of a variolitic basalt flow. This basalt is a distinctive marker unit and has been traced with confidence for a strike length of approximately 12km.

Many of the known base metal Zn-Cu occurrences in the area are hosted by this chert argillite assemblage. Much of this mineralization consists of stringer and disseminated Fe-Zn-Cu-Pb sulphides, however, several instances of bedded VMS-style sulphides are known.

---

## 2. SURVEY WORK UNDERTAKEN

### 2.1 SURVEY LOG

Date	Description
November 6, 2014	Locate area of interest and prospect.

***Table 1: Survey Log***

### 2.2 PERSONNEL

Bill Bonney of Kirkland Lake, Ontario along with Bruce Lavalley of Britt, Ontario performed the prospecting traverses.

### 2.3 TRAVERSE SPECIFICATIONS

The prospecting traverse specifications were to randomly traverse the property looking for any outcropping and mineralization.

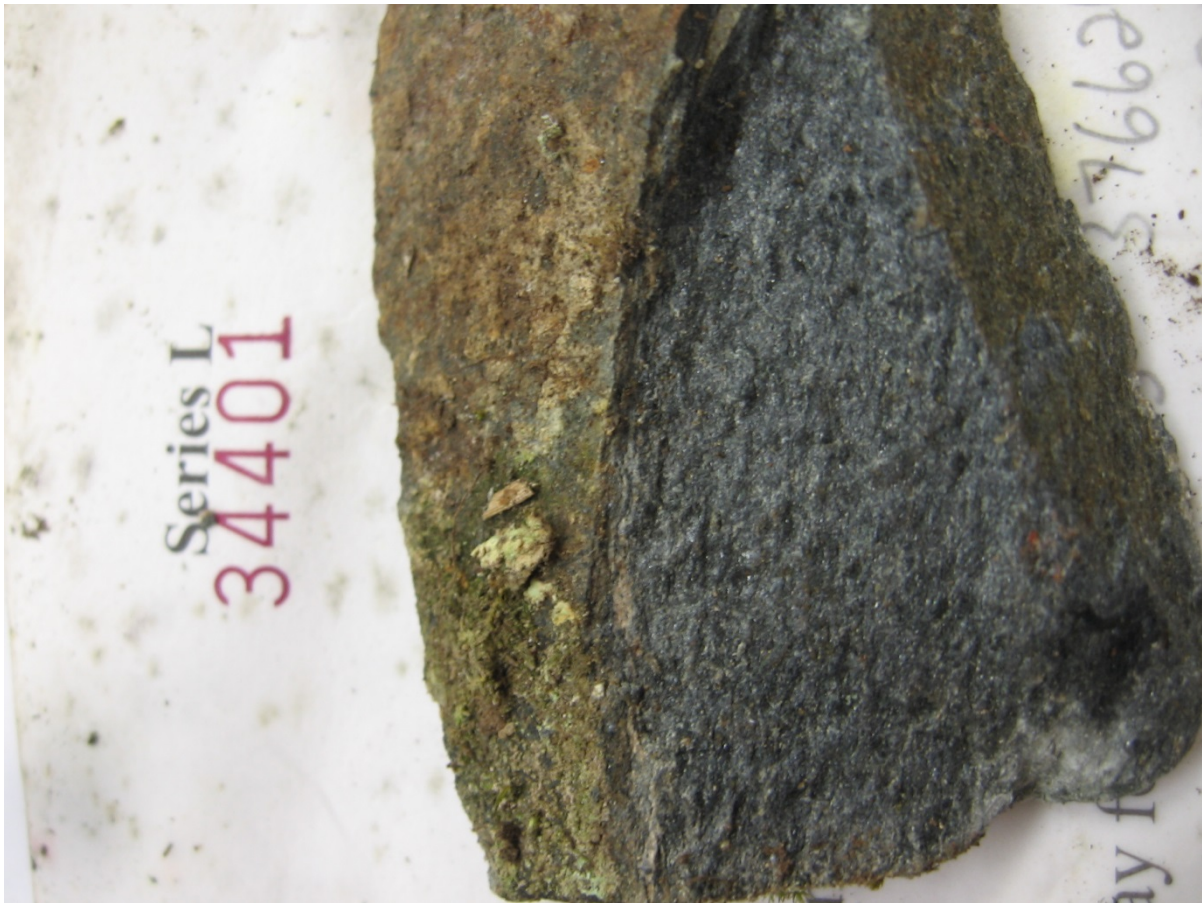
### 3. OVERVIEW OF SURVEY RESULTS

**ALL SAMPLES WERE TAKEN FOR REFERENCE PURPOSES ONLY! ALL SAMPLES WERE PRESENTED TO SKEAD HOLDINGS LTD.**

#### 3.1 DAY-1 – NOVEMBER 6, 2014

##### Sample 34401

UTM Zone 17  
376626E  
5278325N



**Figure 2: Picture of Sample 34401**

Sample 34402

UTM Zone 17  
376596E  
5278381N



**Figure 3: Picture of Sample 34402**



Sample 34403

UTM Zone 17  
376934E  
5278322N



**Figure 4: Picture of Sample 34403**

Sample 34404

UTM Zone 17  
376947E  
5278670N



**Figure 5: Picture of Sample 34404**

Sample 34405

UTM Zone 17  
377259E  
5279143N



**Figure 6: Picture of Sample 34405**

Sample 34406

UTM Zone 17  
377228E  
5279378N



**Figure 7: Picture of Sample 34406**

Sample 34407

UTM Zone 17  
376953E  
5279621N



**Figure 8: Picture of Sample 34407**

Sample 34451

UTM Zone 17  
376447E  
5278244N



**Figure 9: Picture of Sample 34451**

Sample 34452

UTM Zone 17  
376335E  
5278367N



**Figure 10: Picture of Sample 34452**

Sample 34453

UTM Zone 17  
376138E  
5278475N



**Figure 11: Picture of Sample 34453**



Sample 34454

UTM Zone 17  
376123E  
5278641N



**Figure 12: Picture of Sample 34454**

Sample 34455

UTM Zone 17  
376337E  
5278631N



**Figure 13: Picture of Sample 34455**

Sample 34456

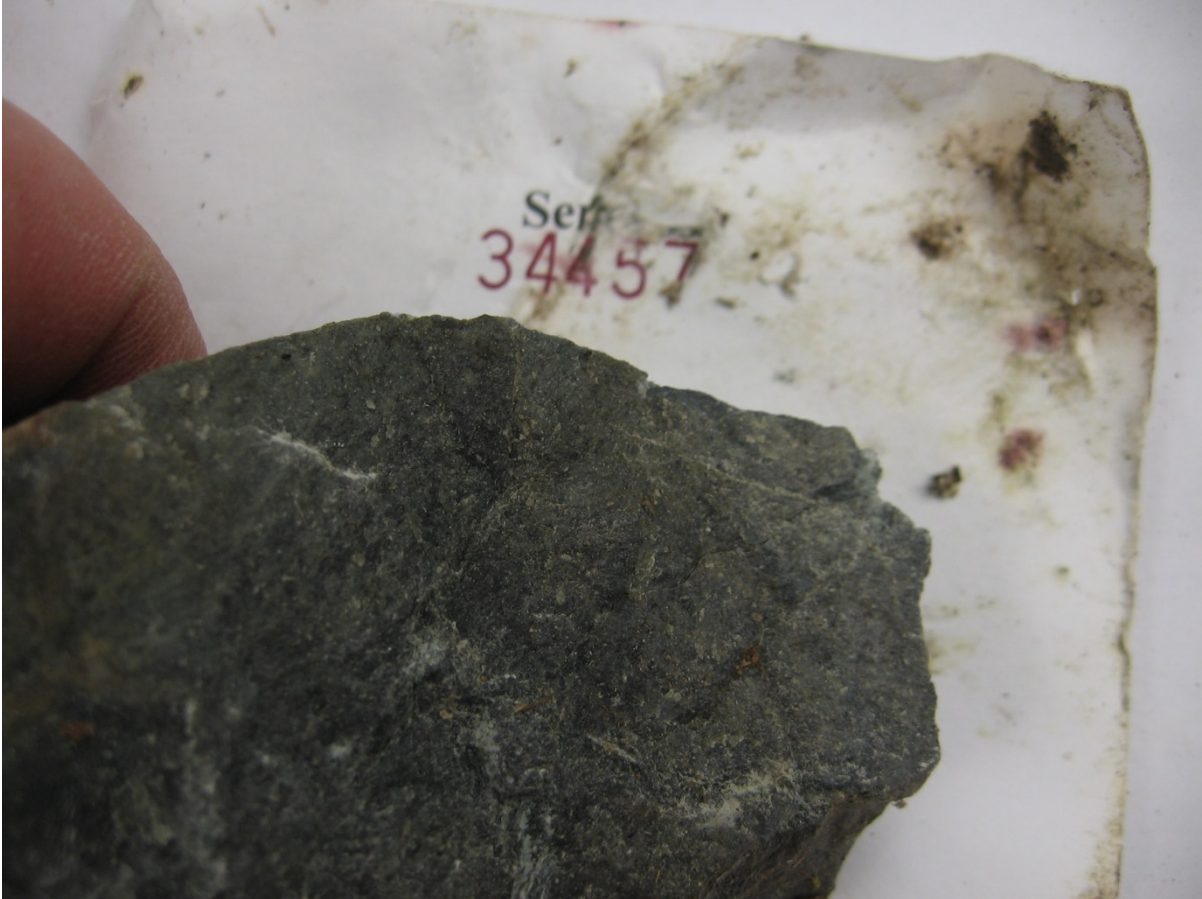
UTM Zone 17  
376525E  
5278617N



**Figure 14: Picture of Sample 34456**

Sample 34457

UTM Zone 17  
376682E  
5278975N



**Figure 15: Picture of Sample 34457**

Sample 34458

UTM Zone 17  
376390E  
5279114N



**Figure 16: Picture of Sample 34458**

Sample 34459

UTM Zone 17  
376709E  
5279283N



**Figure 17: Picture of Sample 34459**

Sample 34460

UTM Zone 17  
376858E  
5279366N



**Figure 18: Picture of Sample 34460**

Sample 34461

UTM Zone 17  
376914E  
5279525N



**Figure 19: Picture of Sample 34461**



---

## APPENDIX A

### STATEMENT OF QUALIFICATIONS

I, C. Jason Ploeger, hereby declare that:

1. I am a professional geophysicist with residence in Larder Lake, Ontario and am presently employed as a Geophysicist and Geophysical Manager of Canadian Exploration Services Ltd. of Larder Lake, Ontario.
2. I am a Practising Member of the Association of Professional Geoscientists, with membership number 2172.
3. I graduated with a Bachelor of Science degree in geophysics from the University of Western Ontario, in London Ontario, in 1999.
4. I have practiced my profession continuously since graduation in Africa, Bulgaria, Canada, Mexico and Mongolia.
5. I am a member of the Ontario Prospectors Association, a Director of the Northern Prospectors Association and a member of the Society of Exploration Geophysicists.
6. I do not have nor expect an interest in the properties and securities of **Skead Holdings Ltd.**
7. I am responsible for the final processing and validation of the survey results and the compilation of the presentation of this report. The statements made in this report represent my professional opinion based on my consideration of the information available to me at the time of writing this report.



C. Jason Ploeger, P.Geo., B.Sc.  
Geophysical Manager  
Canadian Exploration Services Ltd.

Larder Lake, ON  
December 5, 2014

**APPENDIX B**

**GARMIN GPS MAP 62S**



Physical & Performance:	
Unit dimensions, WxHxD:	2.4" x 6.3" x 1.4" (6.1 x 16.0 x 3.6 cm)
Display size, WxH:	1.43" x 2.15" (3.6 x 5.5 cm); 2.6" diag (6.6 cm)
Display resolution, WxH:	160 x 240 pixels
Display type:	transflective, 65-K color TFT
Weight:	9.2 oz (260.1 g) with batteries
Battery:	2 AA batteries (not included); NiMH or Lithium recommended
Battery life:	20 hours
Waterproof:	yes (IPX7)
Floats:	no
High-sensitivity receiver:	yes

Interface:	high-speed USB and NMEA 0183 compatible
------------	---

Maps & Memory:	
Basemap:	yes
Preloaded maps:	no
Ability to add maps:	yes
Built-in memory:	1.7 GB
Accepts data cards:	microSD™ card (not included)
Waypoints/favorites/locations:	2000
Routes:	200
Track log:	10,000 points, 200 saved tracks

Features & Benefits:	
Automatic routing (turn by turn routing on roads):	yes (with optional mapping for detailed roads)
Electronic compass:	yes (tilt-compensated, 3-axis)
Touchscreen:	no
Barometric altimeter:	yes
Camera:	no
<u>Geocaching-friendly:</u>	yes (paperless)
<u>Custom maps compatible:</u>	yes
Photo navigation (navigate to geotagged photos):	yes
Outdoor GPS games:	no
Hunt/fish calendar:	yes

---

Sun and moon information:	yes
Tide tables:	yes
Area calculation:	yes
Custom POIs (ability to add additional points of interest):	yes
Unit-to-unit transfer (shares data wirelessly with similar units):	yes
Picture viewer:	yes
Garmin Connect™ compatible (online community where you analyze, categorize and share data):	yes

- *Specifications obtained from [www.garmin.com](http://www.garmin.com)*

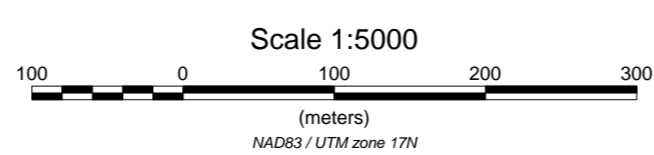
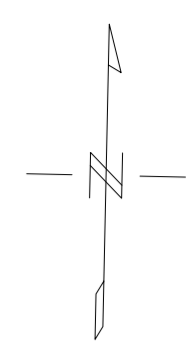
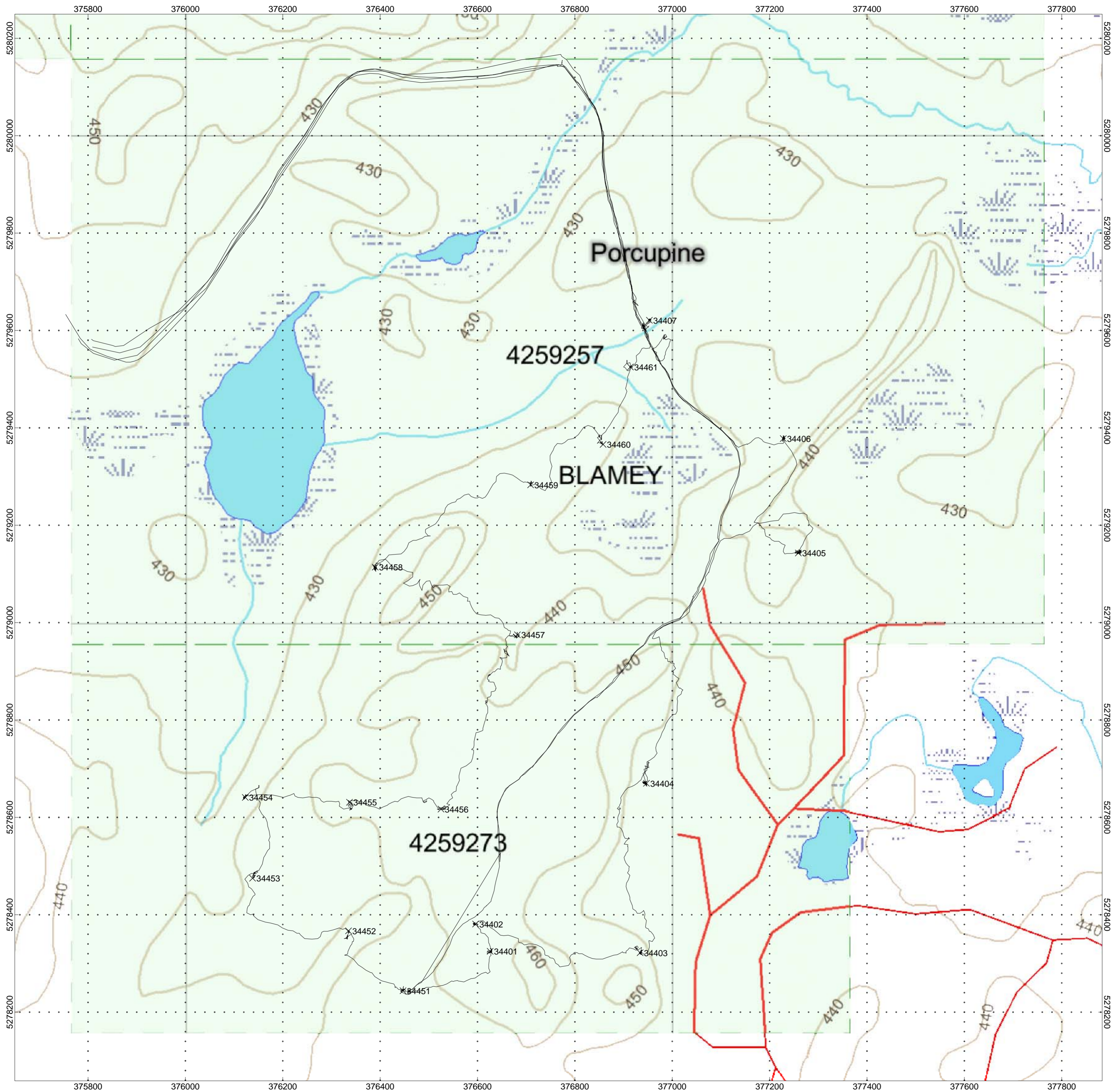
**APPENDIX C**


**LIST OF MAPS (IN MAP POCKET)**

Posted prospecting plan map (1:5000)

- 1) SKEAD-BLAMEY-PROSP

**Total Maps = 1**



<b>SKEAD HOLDINGS LTD.</b>	
<b>BLAMEY PROPERTY</b> Blamey Township, Ontario	
PROSPECTING TRAVERSE PLAN MAP	
Traverses by: Bruce Lavalley and Bill Bonney Processed by: C Jason Ploeger, B.Sc. Map Drawn By: C Jason Ploeger, B.Sc. December 2014	
SKEAD-BLAMEY-PROSP	