



CANADIAN EXPLORATION SERVICES LTD

PO Box 219, 14579 Government Road, Larder Lake, Ontario, P0K 1L0, Canada
Phone (705) 643-2345 Fax (705) 643-2191 www.cxsltd.com

SKEAD HOLDINGS LTD.

PROSPECTING

Survey

Over the

CARDIFF RE PROPERTY

NORTH BLOCK

Cardiff Township, Ontario

TABLE OF CONTENTS

1.	SURVEY DETAILS	3
1.1	PROJECT NAME.....	3
1.2	CLIENT	3
1.3	LOCATION	3
1.4	ACCESS.....	4
1.5	GENERAL GEOLOGY	4
1.6	PREVIOUS WORK	5
2.	SURVEY WORK UNDERTAKEN.....	6
2.1	SURVEY LOG.....	6
2.2	PERSONNEL	6
3.	OVERVIEW OF SURVEY RESULTS.....	7
3.1	DAY-1 – JULY 23, 2013	7
3.2	DAY-2– JULY 24, 2013.....	15
3.3	DAY-3– JULY 25, 2013.....	24

LIST OF APPENDICES

- APPENDIX A: STATEMENT OF QUALIFICATIONS**
APPENDIX B: INSTRUMENT SPECIFICATIONS
APPENDIX C: LIST OF MAPS (IN MAP POCKET)

LIST OF TABLES AND FIGURES

Figure 1: Location of the Cardiff RE Property	3
Figure 2: Google Image with Survey Area Access	4
Figure 3: Sample 3085	7
Figure 4: Sample 3086	8
Figure 5: Sample 3087	9
Figure 6: Sample 3088	10
Figure 7: Sample 3089	11
Figure 8: Sample 3090	12
Figure 9: Sample 3091	13
Figure 10: Sample 3092	14
Figure 11: Sample 3093	15
Figure 12: Sample 3094	16
Figure 13: Sample 3095	17
Figure 14: Sample 3096	18

Figure 15: Sample 3097	19
Figure 16: Sample 3098	20
Figure 17: Sample 3099	21
Figure 18: Sample 3100	22
Figure 19: Sample 62901	23
Figure 20: Sample 62902	24
Table 1: Survey Log	6
Table 2: Stream Bed Samples Collected	25

1. SURVEY DETAILS

1.1 PROJECT NAME

This project is known as the **Cardiff RE Property – North Block**.

1.2 CLIENT

SKEAD HOLDINGS LTD.

28 Ford St.
Sault Ste. Marie, Ontario
P6A 4N4

1.3 LOCATION

The Cardiff RE Property – North Block is located approximately 25km west of Bancroft, Ontario. The survey area covers claims numbered 1500175 and 1500176, located in Cardiff Township, within the Southern Ontario Mining Division.



Figure 1: Location of the Cardiff RE Property

1.4 ACCESS

Access to the property was attained with a 4x4 truck from County Road 618 approximately 3.5 km east from the Town of Wilberforce, Ontario. From here, an all season gravel road labeled Mumford Road, was travelled eastward for an additional kilometer. At this point, an unnamed forest access road branched off to the south which was travelled for an additional 1.5 kilometers. An ATV was used along the OFSC trail for the final 1.5 kilometers to the survey area.

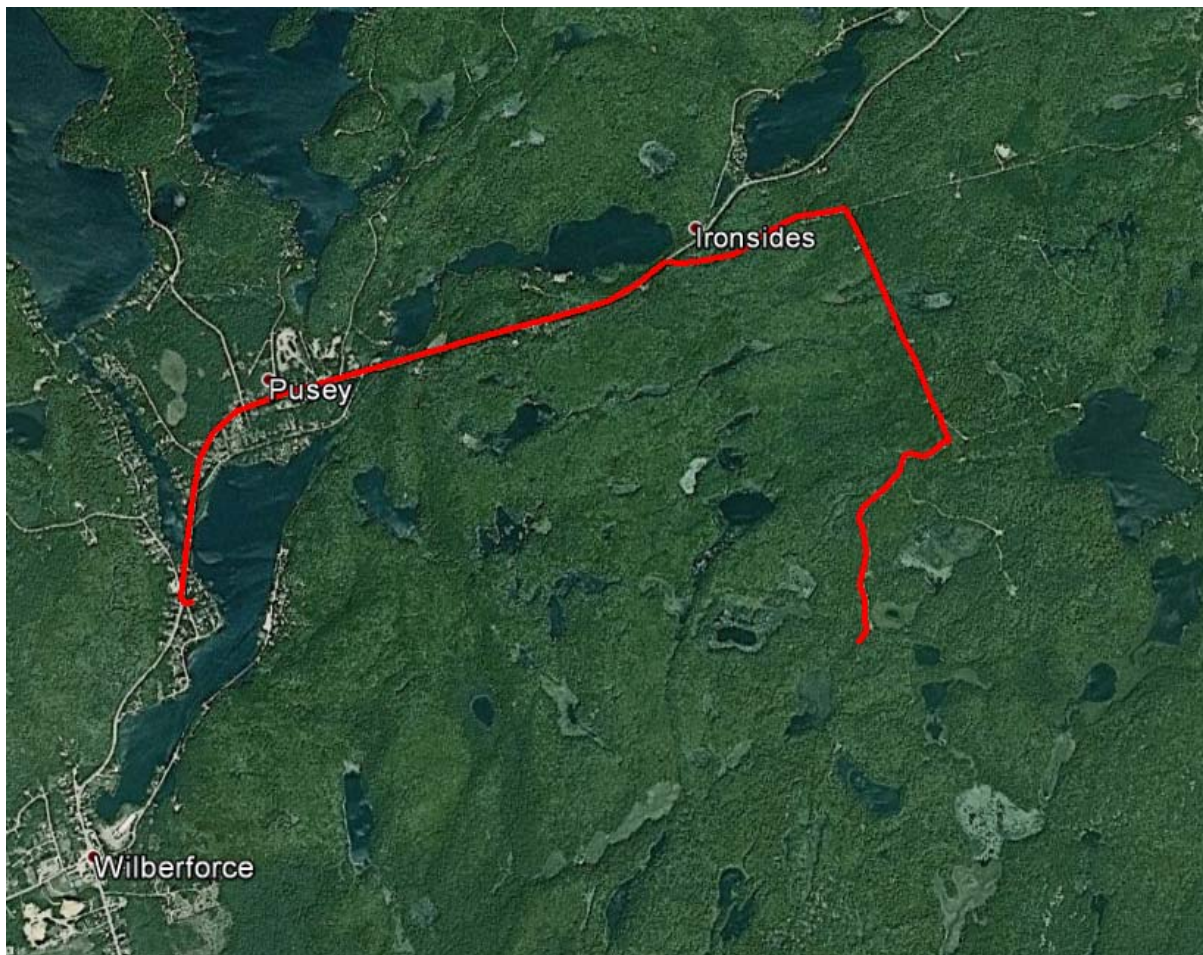


Figure 2: Google Image with Survey Area Access

1.5 GENERAL GEOLOGY

The property is located in an area between the Cheddar Granite and the Monck Lake Granite within the Cardiff Plutonic Complex. According to Map 1957-1, the property itself is underlain by a Para-Amphibolite, hornblende syenite, with marble lenses and granitic pegmatite dikes.

1.6 PREVIOUS WORK

A look at the property history was performed using the AFRI database. Previous work on this and surrounding property are summarized below. However, the origins of historic trenches located during prospecting could not be determined.

1955 - Stratmat Limited

In 1955 Stratamat Limited drilled a hole totaling 41 feet.

1956 – Irondale

In 1956 Irondale drilled a total of 8 diamond drill holes totaling 244 feet.

1957 – Cardiff Uranium Mines

In 1957 Cardiff Uranium Mines drilled 4 holes totaling 709 feet.

1978 – Carbrew Exploration Limited

In 1978 Carbrew Exploration Limited performed an extensive exploration program over a portion of the Cardiff RE property. This program included line cutting, Magnetometer, VLF EM, Radiometrics and IP. From the targets generated geological mapping, stripping and 17 diamond drill holes were performed.

2. SURVEY WORK UNDERTAKEN**2.1 SURVEY LOG**

Date	Description	Distance Traversed
July 23, 2013	Locate area and begin prospecting. Severe thunderstorms in afternoon shorten day.	7.2 km
July 24, 2013	Continue survey.	8.1 km
July 25, 2013	Complete prospecting.	8 km
July 18, 2014	Re-occupy area and take stream bed samples.	7.3 km

Table 1: Survey Log

2.2 PERSONNEL

Jason Ploeger of Larder Lake, Ontario, Bruce Lavalley and Claudia Moraga, both of Britt, Ontario performed the prospecting traverses.

3. OVERVIEW OF SURVEY RESULTS

ALL SAMPLES WERE TAKEN FOR REFERENCE PURPOSES ONLY! ALL SAMPLES WERE PRESENTED TO SKEAD HOLDINGS LTD.

3.1 DAY-1 – JULY 23, 2013

Sample 3085

**NAD 83 - Zone 17N
722254E 4992092N**

Gently rolling topography in a maple stand. Sample 3085 was collected from an outcrop exposure at this location.



Figure 3: Sample 3085

Sample 3086**NAD 83 - Zone 17N
721968E 4992170N**

Flat topography with vegetation cover being spruce. This site is located on the edge of a beaver pond and creek system. Sample 3086 was collected from an out-crop exposure at this location.



Figure 4: Sample 3086

Sample 3087**NAD 83 - Zone 17N
721800E 4992240N**

This location is in a maple stand near the crest of a gently rolling hill. The hill appears to roll steeply to the west. Sample 3087 was collected from an outcrop exposure at this location.



Figure 5: Sample 3087

Sample 3088**NAD 83 - Zone 17N
721703E 4992269N**

This location is on the west side of a hill with numerous small outcrops within a maple stand. Sample 3088 was collected from an outcrop exposure at this location.



Figure 6: Sample 3088

Sample 3089**NAD 83 - Zone 17N
721212E 4992312N**

This location is in gently rolling topography within a maple stand. Sample 3089 was collected from an outcrop exposure at this location.



Figure 7: Sample 3089

Sample 3090**NAD 83 - Zone 17N
721598E 4992197N**

The vegetation is mixed and the topography is gently rolling. Sample 3090 was collected from an outcrop exposure at this location.

This sample was re-numbered to 67439 but actually represents sample 3090.



Figure 8: Sample 3090

Sample 3091

**NAD 83 - Zone 17N
721602E 4992193N**

The vegetation is mixed and the topography is gently rolling. Sample 3091 was collected from an outcrop exposure at this location.



Figure 9: Sample 3091

Sample 3092**NAD 83 - Zone 17N
721569E 4992097N**

The vegetation is mixed and the topography was steeply rolling to a pond. Sample 3092 was collected from an outcrop exposure at this location.



Figure 10: Sample 3092

3.2 DAY-2– JULY 24, 2013**Sample 3093****NAD 83 - Zone 17N
721965E 4991973N**

The vegetation is mixed and the topography was rolling to a pond. Sample 3093 was collected from an outcrop exposure at this location.

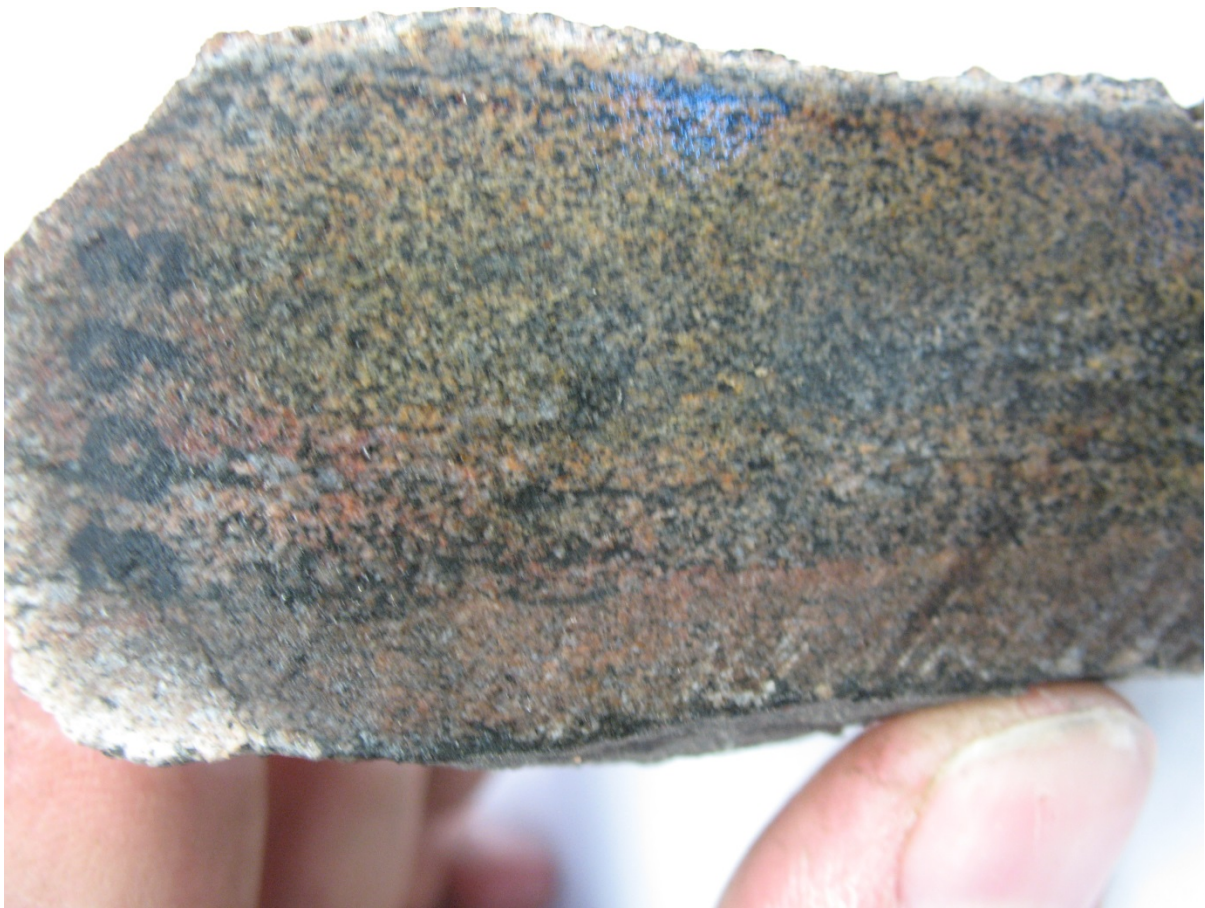


Figure 11: Sample 3093

Sample 3094

**NAD 83 - Zone 17N
721363E 4991319N**

The vegetation is mixed and the topography was rolling south towards a ravine. Sample 3094 was collected from a historic trench.



Figure 12: Sample 3094

Sample 3095

**NAD 83 - Zone 17N
721379E 4991326N**

The vegetation is mixed and the topography was rolling south towards a ravine. Sample 3095 was collected from a historic trench.



Figure 13: Sample 3095

Sample 3096**NAD 83 - Zone 17N
721456E 4991506N**

This sample was collected in a ravine. The rocks in this area appeared as if they were once blasted, however they may have also been related to talus surrounding the ravine.

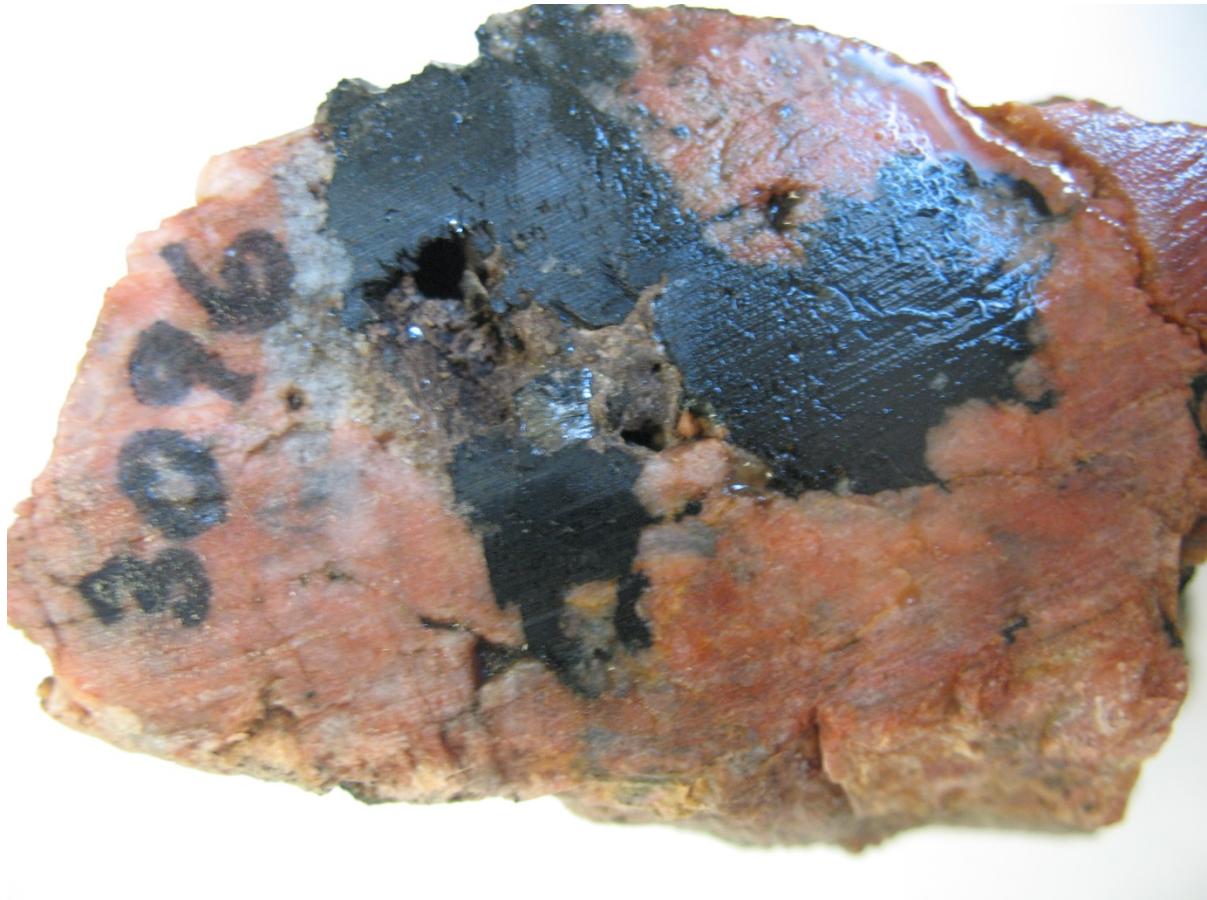


Figure 14: Sample 3096

Sample 3097

**NAD 83 - Zone 17N
721518E 4991595N**

This sample was collected near the top of a ravine.



Figure 15: Sample 3097

Sample 3098

**NAD 83 - Zone 17N
721331E 4991852N**

This sample was collected from a rolling outcrop within a maple stand.



Figure 16: Sample 3098

Sample 3099

**NAD 83 - Zone 17N
721448E 4991818N**

This sample was collected from an area of mixed vegetation on the side of a ravine.



Figure 17: Sample 3099

Sample 3100

**NAD 83 - Zone 17N
721452E 4991816N**

This sample was collected from an area of mixed vegetation on the side of a ravine.



Figure 18: Sample 3100

Sample 62901

**NAD 83 - Zone 17N
721737E 4991736N**

This sample was collected in a small exposure in a maple stand.



Figure 19: Sample 62901

3.3 DAY-3– JULY 25, 2013

Sample 62902

**NAD 83 - Zone 17N
421838E 4992338N**

This sample was collected in a small exposure in a maple stand.



Figure 20: Sample 62902

3.4 DAY-4– JULY 18, 2014

This day was dedicated to obtaining stream bed samples. Some of the samples were taken south and downstream of the claims. This was done to account for movement of the material that would have possibly originated on the claim group.

Easting	Northing	Sample
721435	4991743	34315
721460	4991839	34316
721487	4991910	34317
721544	4992173	34318
721539	4991985	34319
721714	4991346	34395
721552	4991347	34396
721451	4991352	34397
721476	4991449	34398
721447	4991545	34399
721430	4991644	34400

Table 2: Stream Bed Samples Collected

APPENDIX A

STATEMENT OF QUALIFICATIONS

I, C. Jason Ploeger, hereby declare that:

1. I am a professional geophysicist with residence in Larder Lake, Ontario and am presently employed as a Geophysicist and Geophysical Manager of Canadian Exploration Services Ltd. of Larder Lake, Ontario.
2. I am a Practising Member of the Association of Professional Geoscientists, with membership number 2172.
3. I graduated with a Bachelor of Science degree in geophysics from the University of Western Ontario, in London Ontario, in 1999.
4. I have practiced my profession continuously since graduation in Africa, Bulgaria, Canada, Mexico and Mongolia.
5. I am a member of the Ontario Prospectors Association, a Director of the Northern Prospectors Association and a member of the Society of Exploration Geophysicists.
6. I do not have nor expect an interest in the properties and securities of **Skead Holdings Ltd.**
7. I am responsible for the final processing and validation of the survey results and the compilation of the presentation of this report. The statements made in this report represent my professional opinion based on my consideration of the information available to me at the time of writing this report.



C. Jason Ploeger, P.Geo., B.Sc.
Geophysical Manager
Canadian Exploration Services Ltd.

Larder Lake, ON
January 26, 2015

APPENDIX B

GARMIN GPS MAP 62S



Physical & Performance:	
Unit dimensions, WxHxD:	2.4" x 6.3" x 1.4" (6.1 x 16.0 x 3.6 cm)
Display size, WxH:	1.43" x 2.15" (3.6 x 5.5 cm); 2.6" diag (6.6 cm)
Display resolution, WxH:	160 x 240 pixels
Display type:	transflective, 65-K color TFT
Weight:	9.2 oz (260.1 g) with batteries
Battery:	2 AA batteries (not included); NiMH or Lithium recommended
Battery life:	20 hours
Waterproof:	yes (IPX7)
Floats:	no
High-sensitivity receiver:	yes

Interface:	high-speed USB and NMEA 0183 compatible
------------	---

Maps & Memory:	
Basemap:	yes
Preloaded maps:	no
Ability to add maps:	yes
Built-in memory:	1.7 GB
Accepts data cards:	microSD™ card (not included)
Waypoints/favorites/locations:	2000
Routes:	200
Track log:	10,000 points, 200 saved tracks

Features & Benefits:	
Automatic routing (turn by turn routing on roads):	yes (with optional mapping for detailed roads)
Electronic compass:	yes (tilt-compensated, 3-axis)
Touchscreen:	no
Barometric altimeter:	yes
Camera:	no
<u>Geocaching-friendly:</u>	yes (paperless)
<u>Custom maps compatible:</u>	yes
Photo navigation (navigate to geotagged photos):	yes
Outdoor GPS games:	no
Hunt/fish calendar:	yes

Sun and moon information:	yes
Tide tables:	yes
Area calculation:	yes
Custom POIs (ability to add additional points of interest):	yes
Unit-to-unit transfer (shares data wirelessly with similar units):	yes
Picture viewer:	yes
Garmin Connect™ compatible (online community where you analyze, categorize and share data):	yes

- *Specifications obtained from www.garmin.com*

APPENDIX C

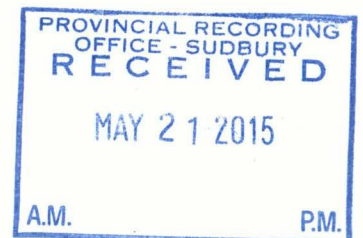
LIST OF MAPS (IN MAP POCKET)

Posted traverse plan maps (1:5000)

1) SKEAD-CARDIFF RE-NORTH - PROSPECTING

Total Maps = 1

- 3099 Potassic metasomatized siliceous metasediment
with narrow quartz veining
- 3100 Potassic metasomatized siliceous metasediment
- 62901 Gneissic hornblende plagioclase
- 62902 Potassic metasomatized (banded) siliceous metasediment



Sample Descriptions Cope Lake

Pg. 1

- 3085 Hornblende plagioclase gneiss

- 3086 Hornblende feldspar gneiss

- 3087 Hornblende plagioclase gneiss

- 3088 Reddish hornblende feldspar gneiss

- 3089 Hornblende syenite

- 3090 Reddish altered syenite

- 3091 Greenish white pegmatite, quartz and pyroxene

- 3092 Reddish foliated to gneiss hornblende syenite

- 3093 Altered syenite gneiss

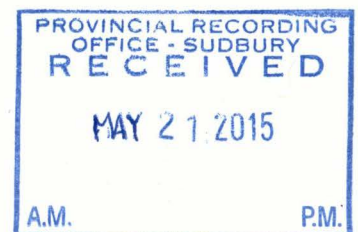
- 3094 Potassic metasomatized siliceous metasediment with
narrow quartz veining

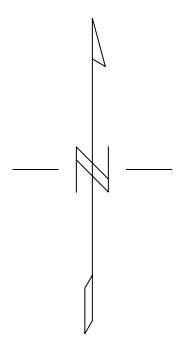
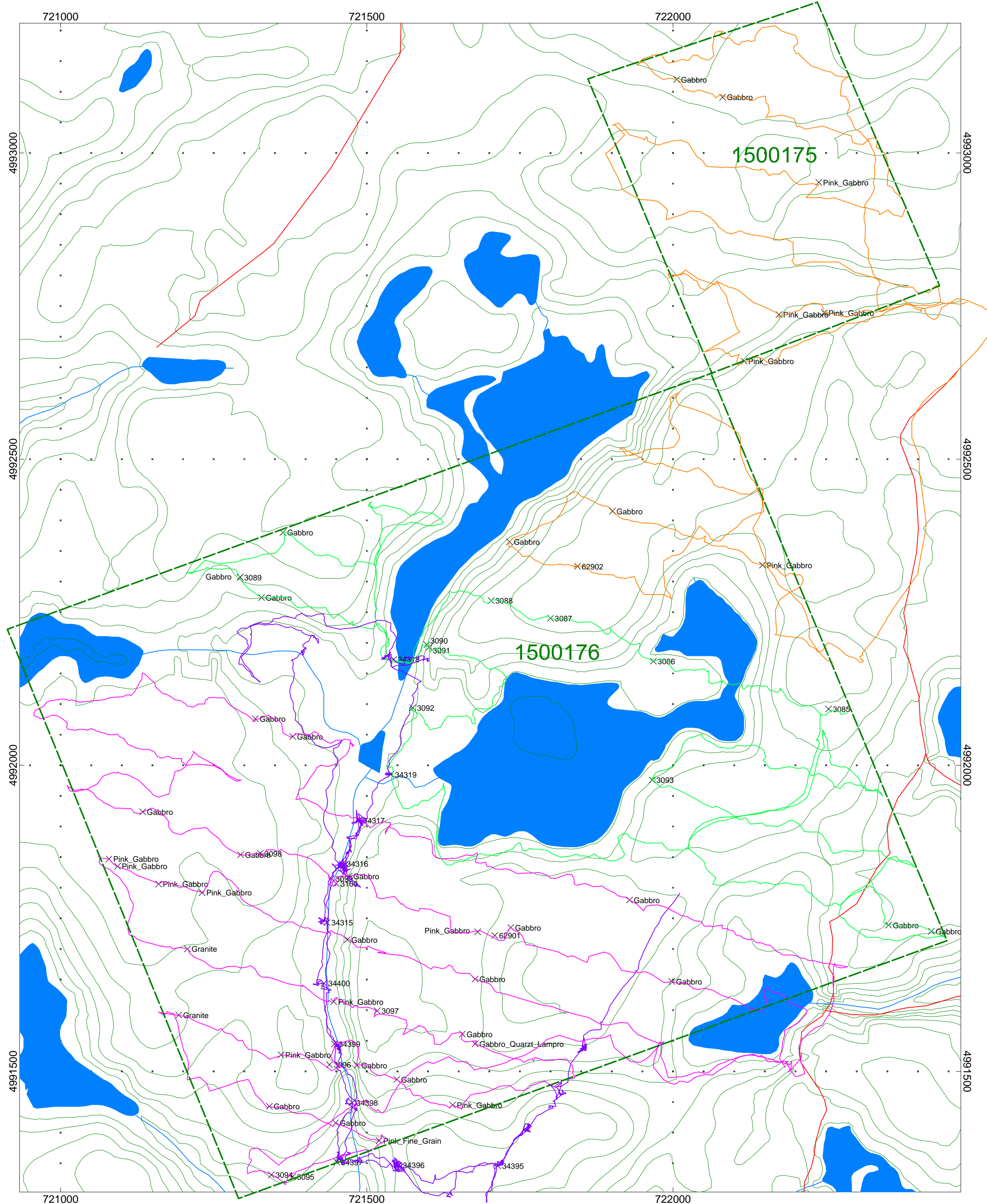
- 3095 Scapolite with black unidentified mineral

- 3096 Potassic metasomatized siliceous metasediment with
black unidentified mineral

- 3097 Hornblende plagioclase gneiss

- 3098 Pegmatite syenite

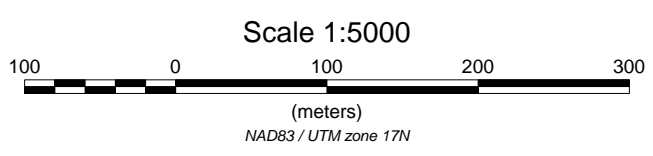




- July 23, 2013
- July 24, 2013
- July 25, 2013
- July 18, 2014

SKEAD HOLDINGS LTD.
CARDIFF -RE PROPERTY
NORTH BLOCK
Cardiff Township, Ontario

PROSPECTING TRAVERSE PLAN MAP



Traverses by: C Jason Ploeger,
 Bruce Lavalley and Claudia Morage
 Processed by: C Jason Ploeger, B.Sc.
 Map Drawn By: C Jason Ploeger, B.Sc.
 January 2015

