



CANADIAN EXPLORATION SERVICES LTD

PO Box 219, 14579 Government Road, Larder Lake, Ontario, P0K 1L0, Canada
Phone (705) 643-2345 Fax (705) 643-2191 www.cxsltd.com

SKEAD HOLDINGS LTD.

Prospecting

On the

Cunningham-B Property

Cunningham Township, Ontario

TABLE OF CONTENTS

1.	SURVEY DETAILS	3
1.1	PROJECT NAME.....	3
1.2	CLIENT	3
1.3	LOCATION	3
1.4	ACCESS.....	4
1.5	PREVIOUS WORK	4
1.6	GENERAL GEOLOGY	5
2.	SURVEY WORK UNDERTAKEN.....	6
2.1	SURVEY LOG.....	6
2.2	PERSONNEL	6
2.3	TRAVERSE SPECIFICATIONS	6
3.	OVERVIEW OF SURVEY RESULTS.....	7
3.1	DAY-1 – JUNE 13, 2014.....	7

LIST OF APPENDICES

APPENDIX A: STATEMENT OF QUALIFICATIONS

APPENDIX B: INSTRUMENT SPECIFICATIONS

APPENDIX C: LIST OF MAPS (IN MAP POCKET)

LIST OF TABLES AND FIGURES

Figure 1: Location of the Cunningham-B Property.....	3
Figure 2: Picture of Sample 34301	7
Figure 3: Picture of Sample 34302	8
Figure 4: Picture of Sample 34303	9
Figure 5: Picture of Sample 34304	10
Figure 6: Picture of Sample 34305	11
Figure 7: Picture of Sample 34306	12
Figure 8: Picture of Sample 34307	13
Figure 9: Picture of Sample 34308	14
Figure 10: Picture of Sample 34309	15
Figure 11: Picture of Sample 34310	16
Figure 12: Picture of Sample 34311	17
Figure 13: Picture of Sample 34312	18
Figure 14: Picture of Sample 34313	19
Figure 15: Picture of Sample 34314	20

Figure 16: Picture of Sample 35351	21
Figure 17: Picture of Sample 35352	22
Figure 18: Picture of Sample 35353	23
Figure 19: Picture of Sample 35354	24
Figure 20: Picture of Sample 34355	25
Figure 21: Picture of Sample 35356	26
Table 1: Survey Log	6

1. SURVEY DETAILS

1.1 PROJECT NAME

This project is known as the **Cunningham-B Property**.

1.2 CLIENT

SKEAD HOLDINGS LTD.

28 Ford St.
Sault Ste. Marie, Ontario
P6A 4N4

1.3 LOCATION

The Cunningham-B Property is located in Cunningham Township approximately 10km northeast of Sultana, Ontario. The survey area covers claims numbered 4259265, 4259266 and 4259267, located in Cunningham Township, within the Porcupine Mining Division.

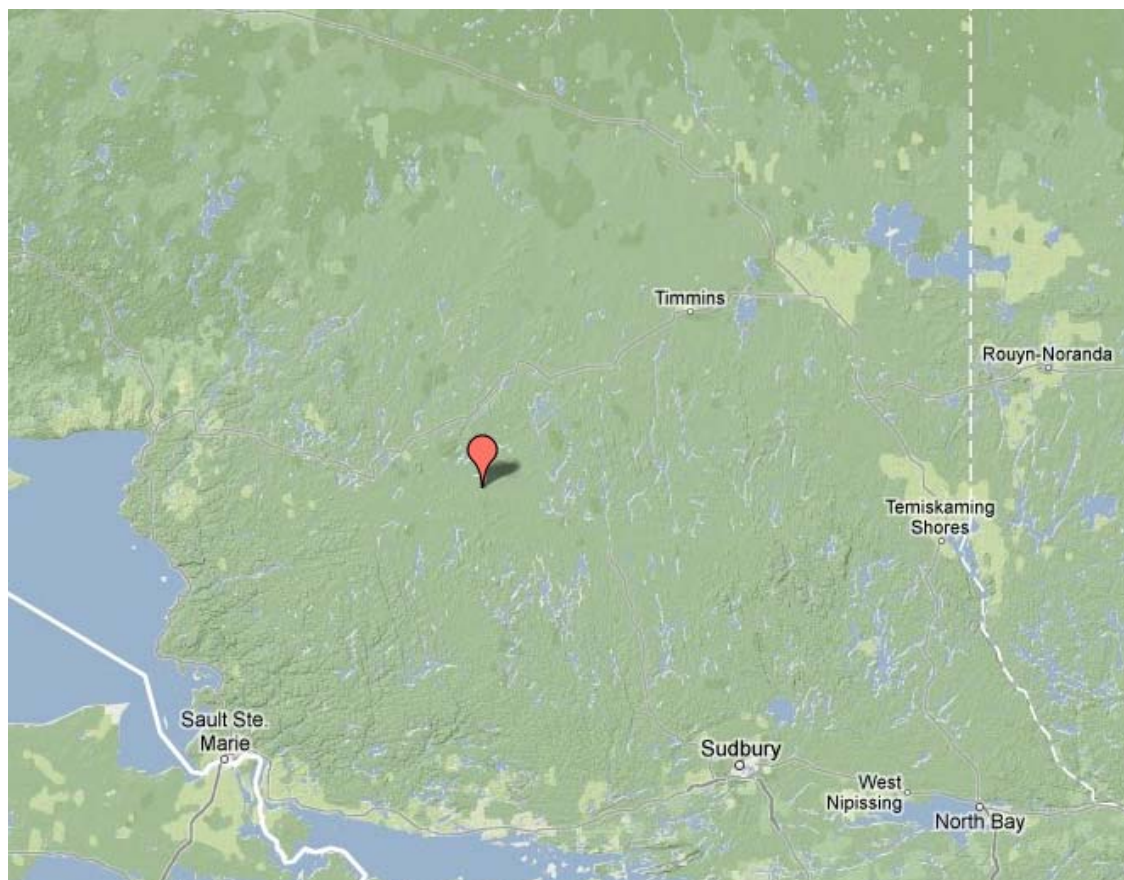


Figure 1: Location of the Cunningham-B Property

1.4 ACCESS

Access to the property was attained with a 4x4 truck on Highway 129 for approximately 28 km southeast from the Town of Chapleau to Regional Rd 667 for approximately 47km east. From that point, ATVs were used to travel for an additional 10km north on an old logging road to the beginning of the property. The rest of the property was then accessed by ATVs trails and on foot.

1.5 PREVIOUS WORK

A substantial amount of work has been done on the property and surrounding claims. The volume of work and includes:

- 1954 – The American Metal Company – EM - Diamond Drilling – 1 hole totaling 559.5 feet
- 1964 – Shunsby Mines Ltd. – Diamond Drilling – 5 holes totaling 1494 feet
- 1964 – Shunsby Mines Ltd. – Geology - Magnetometer – EM (Turam)
- 1966 – Consolidate Shunsby Mines – Diamond Drilling – 9 holes totaling 2301.5 feet
- 1975 – Grandora Exploration Ltd. – Diamond Drilling on Shunsby Zone
- 1980 – MW Resources Limited – Diamond Drilling – Magnetometer –VLF - 2 holes totaling 500 feet
- 1981 – MW Resources Limited - Property Valuation
- 1983 – Kidd Creek Mines Ltd. – Magnetometer –VLF – HLEM
- 1984 – Noranda Exploration Company Limited – Magnetometer – HLEM - Geological Mapping
- 1984 – Kidd Creek Mines Ltd. – Magnetometer –VLF – HLEM
- 1990 – Teck Exploration Ltd. – Magnetometer – HLEM - Diamond Drilling – 5 holes totaling 2061 feet
- 1990 – Bill Troup – Property Valuation
- 1990 – Kirkton Resources Corp. – Compilation – Stripping and Geological Mapping – Mag - HLEM
- 1990 – Cominco Ltd. – Magnetometer – HLEM – UTEM - Geology
- 1991 – Cominco Ltd. – Diamond Drilling – 2 holes totaling 400m
- 1993 – Noranda Exploration Company Limited – Geology - Soil Sampling – Line cutting – Magnetometer –HLEM – Diamond Drilling – 1 hole totaling 381 meters
- 2013 – Skead Holdings Ltd. – Magnetometer - VLF
- 2014 – Skead Holdings Ltd. – Magnetometer - VLF

1.6 GENERAL GEOLOGY

The area is underlain by folded and faulted rock units consisting of a chert-argillite assemblage sandwiched between a felsic volcanic footwall and mafic volcanic hangingwall. All units have been intruded by ultramafic to felsic dikes, sills and plugs. The chert-argillite assemblage is split into an upper and lower unit by the presence of a variolitic basalt flow. This basalt is a distinctive marker unit and has been traced with confidence for a strike length of approximately 12km.

Many of the known base metal Zn-Cu occurrences in the area are hosted by this chert argillite assemblage. Much of this mineralization consists of stringer and disseminated Fe-Zn-Cu-Pb sulphides, however, several instances of bedded VMS-style sulphides are known.

2. SURVEY WORK UNDERTAKEN

2.1 SURVEY LOG

Date	Description			
June 13, 2014	Locate targeted areas and perform traverses			

Table 1: Survey Log

2.2 PERSONNEL

Jason Ploeger of Larder Lake, Ontario along with Bruce Lavalley of Britt, Ontario performed the prospecting traverses.

2.3 TRAVERSE SPECIFICATIONS

The targets of the prospecting traverses were obtained from previously performed magnetic surveys. Two zones of intense magnetic response were noted from this survey. Explanations for these two responses became the targeting for the prospecting.

3. OVERVIEW OF SURVEY RESULTS

ALL SAMPLES WERE TAKEN FOR REFERENCE PURPOSES ONLY! ALL SAMPLES WERE PRESENTED TO SKEAD HOLDINGS LTD.

3.1 DAY-1 – JUNE 13, 2014

Sample 34301

UTM Zone 17
375068E
5284783N



Figure 2: Picture of Sample 34301

Sample 34302

UTM Zone 17
374575E
5284826N

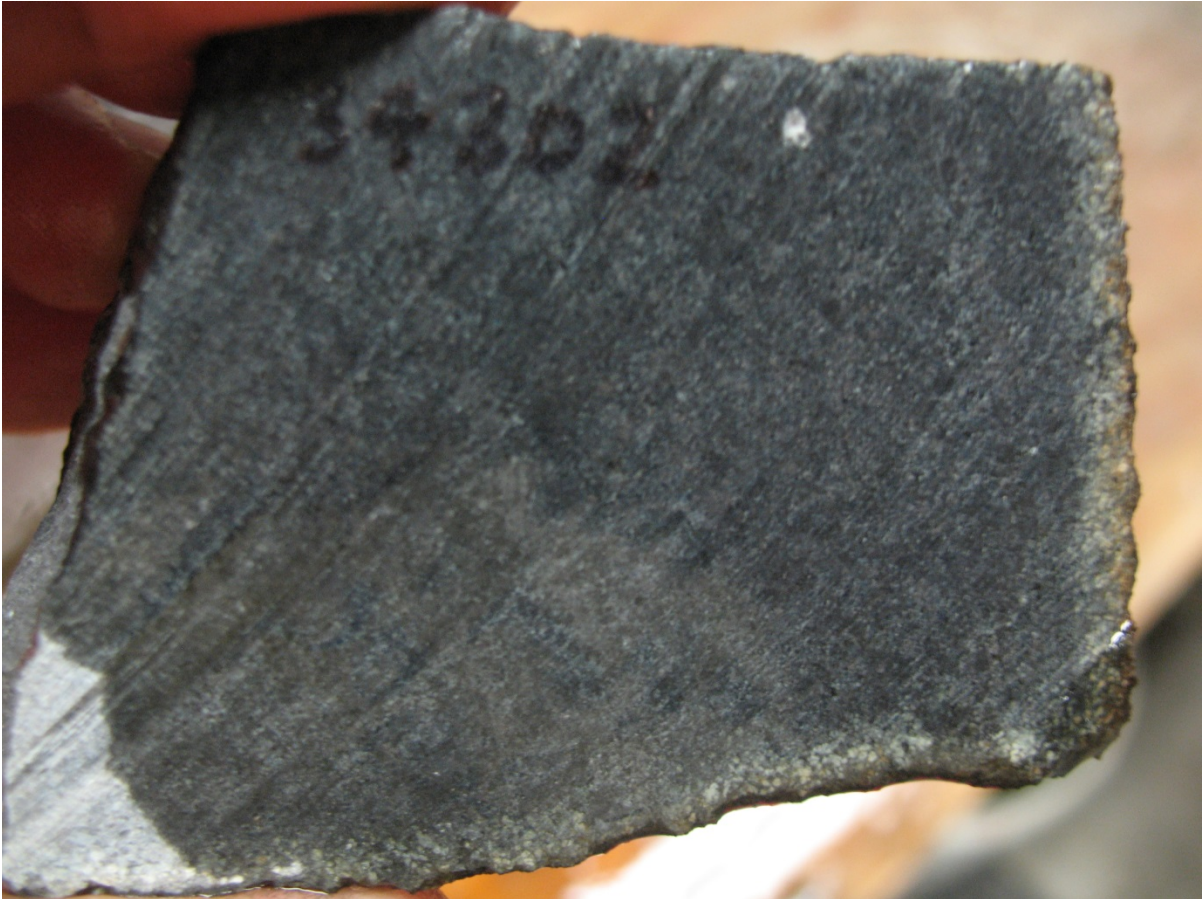


Figure 3: Picture of Sample 34302

Sample 34303

UTM Zone 17
374564E
5284850N



Figure 4: Picture of Sample 34303

Sample 34304

UTM Zone 17
374648E
5284829N



Figure 5: Picture od Sample 34304

Sample 34305

UTM Zone 17
374676E
5284770N



Figure 6: Picture of Sample 34305

Sample 34306

UTM Zone 17
374673E
5284745N



Figure 7: Picture of Sample 34306

Sample 34307

UTM Zone 17
374647E
5284717N



Figure 8: Picture of Sample 34307

Sample 34308

UTM Zone 17
374673E
5284712N



Figure 9: Picture of Sample 34308

Sample 34309

UTM Zone 17
374789E
5285068N



Figure 10: Picture of Sample 34309

Sample 34310

UTM Zone 17
374942E
5285002N



Figure 11: Picture of Sample 34310

Sample 34311

UTM Zone 17
374949E
5284878N



Figure 12: Picture of Sample 34311

Sample 34312

UTM Zone 17
374963E
5284854N



Figure 13: Picture of Sample 34312

Sample 34313

UTM Zone 17
374982E
5284777N



Figure 14: Picture of Sample 34313

Sample 34314

UTM Zone 17
374989E
5284762N



Figure 15: Picture of Sample 34314

Sample 35351

UTM Zone 17
375817E
5284584N



Figure 16: Picture of Sample 35351

Sample 35352

UTM Zone 17
375827E
5284598N



Figure 17: Picture of Sample 35352

Sample 35353

UTM Zone 17
375860E
5284699N



Figure 18: Picture of Sample 35353

Sample 35354

UTM Zone 17
375902E
5284678N



Figure 19: Picture of Sample 35354

Sample 34355

UTM Zone 17
375936E
5284593N



Figure 20: Picture of Sample 34355

Sample 35356

UTM Zone 17
375645E
5284657N



Figure 21: Picture of Sample 35356

APPENDIX A

STATEMENT OF QUALIFICATIONS

I, C. Jason Ploeger, hereby declare that:

1. I am a professional geophysicist with residence in Larder Lake, Ontario and am presently employed as a Geophysicist and Geophysical Manager of Canadian Exploration Services Ltd. of Larder Lake, Ontario.
2. I am a Practising Member of the Association of Professional Geoscientists, with membership number 2172.
3. I graduated with a Bachelor of Science degree in geophysics from the University of Western Ontario, in London Ontario, in 1999.
4. I have practiced my profession continuously since graduation in Africa, Bulgaria, Canada, Mexico and Mongolia.
5. I am a member of the Ontario Prospectors Association, a Director of the Northern Prospectors Association and a member of the Society of Exploration Geophysicists.
6. I do not have nor expect an interest in the properties and securities of **Skead Holdings Ltd.**
7. I am responsible for the final processing and validation of the survey results and the compilation of the presentation of this report. The statements made in this report represent my professional opinion based on my consideration of the information available to me at the time of writing this report.



C. Jason Ploeger, P.Geo., B.Sc.
Geophysical Manager
Canadian Exploration Services Ltd.

Larder Lake, ON
August 22, 2014

APPENDIX B

GARMIN GPS MAP 62S



Physical & Performance:	
Unit dimensions, WxHxD:	2.4" x 6.3" x 1.4" (6.1 x 16.0 x 3.6 cm)
Display size, WxH:	1.43" x 2.15" (3.6 x 5.5 cm); 2.6" diag (6.6 cm)
Display resolution, WxH:	160 x 240 pixels
Display type:	transflective, 65-K color TFT
Weight:	9.2 oz (260.1 g) with batteries
Battery:	2 AA batteries (not included); NiMH or Lithium recommended
Battery life:	20 hours
Waterproof:	yes (IPX7)
Floats:	no
High-sensitivity receiver:	yes

Interface:	high-speed USB and NMEA 0183 compatible
------------	---

Maps & Memory:	
Basemap:	yes
Preloaded maps:	no
Ability to add maps:	yes
Built-in memory:	1.7 GB
Accepts data cards:	microSD™ card (not included)
Waypoints/favorites/locations:	2000
Routes:	200
Track log:	10,000 points, 200 saved tracks

Features & Benefits:	
Automatic routing (turn by turn routing on roads):	yes (with optional mapping for detailed roads)
Electronic compass:	yes (tilt-compensated, 3-axis)
Touchscreen:	no
Barometric altimeter:	yes
Camera:	no
<u>Geocaching-friendly:</u>	yes (paperless)
<u>Custom maps compatible:</u>	yes
Photo navigation (navigate to geotagged photos):	yes
Outdoor GPS games:	no
Hunt/fish calendar:	yes

Sun and moon information:	yes
Tide tables:	yes
Area calculation:	yes
Custom POIs (ability to add additional points of interest):	yes
Unit-to-unit transfer (shares data wirelessly with similar units):	yes
Picture viewer:	yes
Garmin Connect™ compatible (online community where you analyze, categorize and share data):	yes

- *Specifications obtained from www.garmin.com*

APPENDIX C

LIST OF MAPS (IN MAP POCKET)

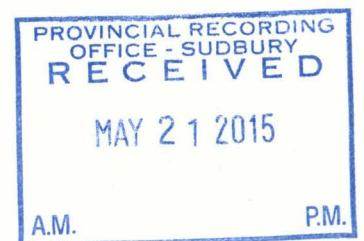
Posted prospecting plan map (1:5000)

- 1) SKEAD-CUNNINGHAM B-PROSPECTING

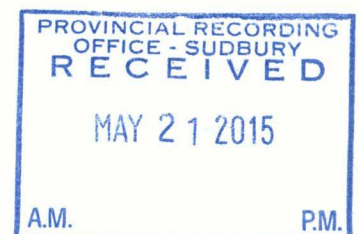
Total Maps = 1

34355 Dark grey fine grained felsic intrusive

34356 Grey-green fine grained with white feldspar phenocrysts
feldspar porphyry intrusive



- 34310 Greyish-green oxidized fine grained cherty iron formation –
greywacke
- 34311 Dark grey fine grained greywacke-iron formation with
angular sulphide clasts breccia ?
- 34312 Grey fine grained altered chert with sulphide bands
- 34313 Dark grey fine grained greywacke-iron formation, oxidized
thread veins of pyrite and quartz-carbonate
- 34314 Dark grey fine grained greywacke-iron formation
narrow sulphide veins (pyrite) minor quartz-carbonate
thread veins
- 34351 Dark grey fine to medium grained mafic/ultramafic
intrusive trace sulphide
- 34352 Dark grey fine to medium grained mafic/ultramafic
intrusive no sulphides
- 34353 Dark grey fine to medium grained mafic/ultramafic
intrusive no sulphides
- 34354 Greenish-grey fine to medium grained felsic intrusive



05/21/2015 13:38 FAX

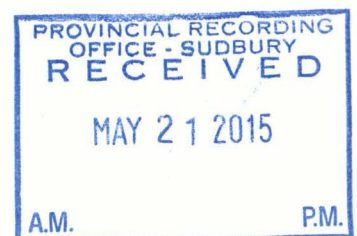
May 21 2015 02:50pm

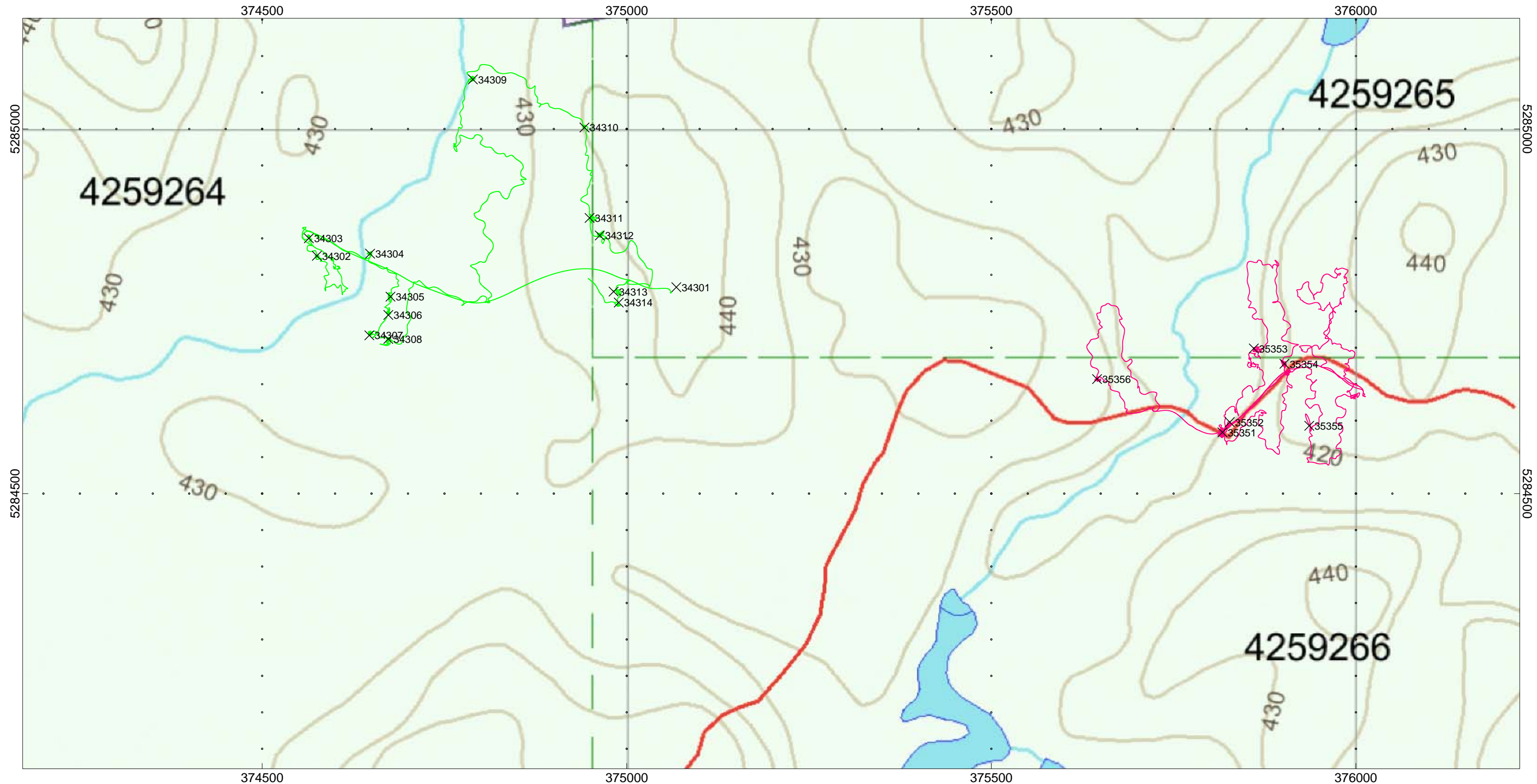
P004

Sample Descriptions – Cunningham “B”

Pg. 1

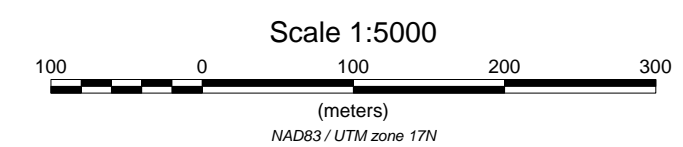
- 34301 Light greenish-grey fine grained altered volcanic, quartz eyes, quartz-carbonate and sulphide clasts
- 34302 Dark grey to blackish medium grained mafic/ultramafic intrusive
- 34303 Dark grey-green fine to medium grained banded mafic/ultramafic volcanic
- 34304 Grey to medium coarse grained gabbro
- 34305 Light green to orangy oxidized bands fine grained cherty iron formation with oxidized sulphide bands and fracture filling
- 34306 Dark grey fine grained chert with 15% irregular quartz-carbonate thread veins and sulphide fractures
- 34307 Semi massive sulphide as clasts and dendritic masses with very fine grained black material
- 34308 Blackish green fine grained mafic volcanic
- 34309 Greenish-grey medium grained mafic/ultramafic intrusive





PROSPECTING TRAVERSES

- Jason Ploeger
- Bruce Lavalley



SKEAD HOLDING LTD.
CUNNINGHAM-B PROPERTY
Cunningham Township, Ontario

PROSPECTING TRAVERSE
June 13, 2014

Traverse Completed by: Jason Ploeger
and Bruce Lavalley
Map Drawn By:
C Jason Ploeger, P.Geo, BSc
August 2014



Drawing: SKEAD-CUNNINGHAM B-PROSPECTING