



**CANADIAN EXPLORATION SERVICES LTD**

PO Box 219, 14579 Government Road, Larder Lake, Ontario, P0K 1L0, Canada  
Phone (705) 643-2345 Fax (705) 643-2191 www.cxsltd.com

---

# **SKEAD HOLDINGS LTD.**

## **Prospecting**

### **On the**

## **Halls Lake Property**

# **Cardiff Township, Ontario**

## TABLE OF CONTENTS

<b>1.</b>	<b>SURVEY DETAILS .....</b>	<b>3</b>
1.1	PROJECT NAME.....	3
1.2	CLIENT .....	3
1.3	LOCATION .....	3
1.4	ACCESS.....	4
1.5	PREVIOUS WORK .....	4
1.6	GENERAL GEOLOGY .....	4
<b>2.</b>	<b>SURVEY WORK UNDERTAKEN.....</b>	<b>5</b>
2.1	SURVEY LOG.....	5
2.2	PERSONNEL .....	5
2.3	TRAVERSE SPECIFICATIONS .....	5
<b>3.</b>	<b>OVERVIEW OF SURVEY RESULTS.....</b>	<b>6</b>
3.1	DAY-1 – JULY 23, 2014 .....	6
3.2	DAY-2 – JULY 24, 2014 .....	10
3.3	DAY-3 – JULY 25, 2014 .....	13
3.4	DAY-4 – JULY 26, 2014 .....	14

## LIST OF APPENDICES

**APPENDIX A: STATEMENT OF QUALIFICATIONS**

**APPENDIX B: INSTRUMENT SPECIFICATIONS**

**APPENDIX C: LIST OF MAPS (IN MAP POCKET)**

## LIST OF TABLES AND FIGURES

Figure 1: Location of the Halls Lake Property.....	3
Figure 2: Picture of Sample 34320 .....	6
Figure 3: Picture of Sample 34321 .....	7
Figure 4: Picture of Sample 34322 .....	8
Figure 5: Picture of Sample 34323 .....	9
Figure 6: Picture of Sample 34324 .....	10
Figure 7: Picture of Sample 34325 .....	11
Figure 8: Picture of Sample 34326 .....	12
Figure 9: Picture of Sample 34327 .....	13
Figure 10: Picture of Sample 34328 .....	14
Table 1: Survey Log .....	5

## 1. SURVEY DETAILS

### 1.1 PROJECT NAME

This project is known as the **Halls Lake Property**.

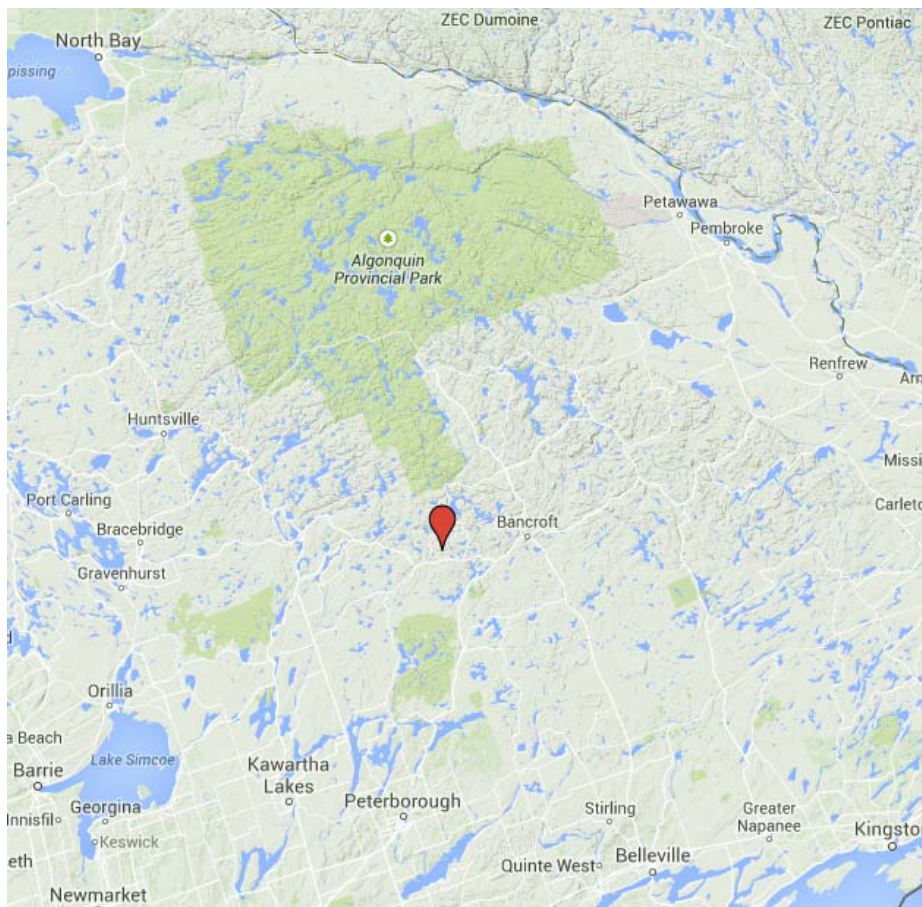
### 1.2 CLIENT

SKEAD HOLDINGS LTD.

28 Ford St.  
Sault Ste. Marie, Ontario  
P6A 4N4

### 1.3 LOCATION

The Halls Lake Property is located approximately 25km west of Bancroft, Ontario. The survey area covers claims numbered 1500483, 1500222, 1500670 and 1500223, located in Cardiff Township, within the Southern Ontario Mining Division.



***Figure 1: Location of the Halls Lake Property***

#### **1.4 ACCESS**

Access to the property was attained with a 4x4 truck. Saunders Road was used for a distance of 5 kilometers eastward from its intersection with the South Wilberforce Road. At this point a road branched to the south towards Halls Lake. This road was travelled for the final kilometer to the survey area.

#### **1.5 PREVIOUS WORK**

1953 - Stratmat Limited - Line cutting, spectrometer, geological mapping

1955 – Halo Uranium Mines Ltd. – 1 hole totaling 253 feet

2005 – El Nino Ventures Inc. - Compilation, scintillometer and prospecting

#### **1.6 GENERAL GEOLOGY**

The property is located in an area between the Cheddar Granite and the Monck Lake Granite within the Cardiff Plutonic Complex. According to Map 1957-1, the property itself is underlain by a Para-Amphibolite, hornblende syenite, with marble lenses and granitic pegmatite dikes.

## 2. SURVEY WORK UNDERTAKEN

### 2.1 SURVEY LOG

Date	Description	Distance Traversed
July 23, 2014	Locate prospecting area and begin prospecting traverses.	7.7 km
July 24, 2014	Continue prospecting traverse.	12.5 km
July 25, 2014	Continue prospecting traverse.	9.3 km
July 26, 2014	Continue prospecting traverse.	7 km
July 27, 2014	Demobilize from Bancroft to Larder Lake.	

**Table 1: Survey Log**

### 2.2 PERSONNEL

Bruce Lavalley of Britt, Ontario performed the prospecting traverses.

### 2.3 TRAVERSE SPECIFICATIONS

The prospecting traverse specifications were to systematically cross the property at roughly 100 meter spacing. Outcrops encountered were investigated with a GPS point taken.



### 3. OVERVIEW OF SURVEY RESULTS

**ALL SAMPLES WERE TAKEN FOR REFERENCE PURPOSES ONLY! ALL SAMPLES WERE PRESENTED TO SKEAD HOLDINGS LTD.**

#### 3.1 DAY-1 – JULY 23, 2014

Sample 34320

UTM Zone 17  
722674E  
4989190N



**Figure 2: Picture of Sample 34320**

Sample 34321

UTM Zone 17  
723190E  
4989383N



**Figure 3: Picture of Sample 34321**



Sample 34322

UTM Zone 17  
723403E  
4989357N

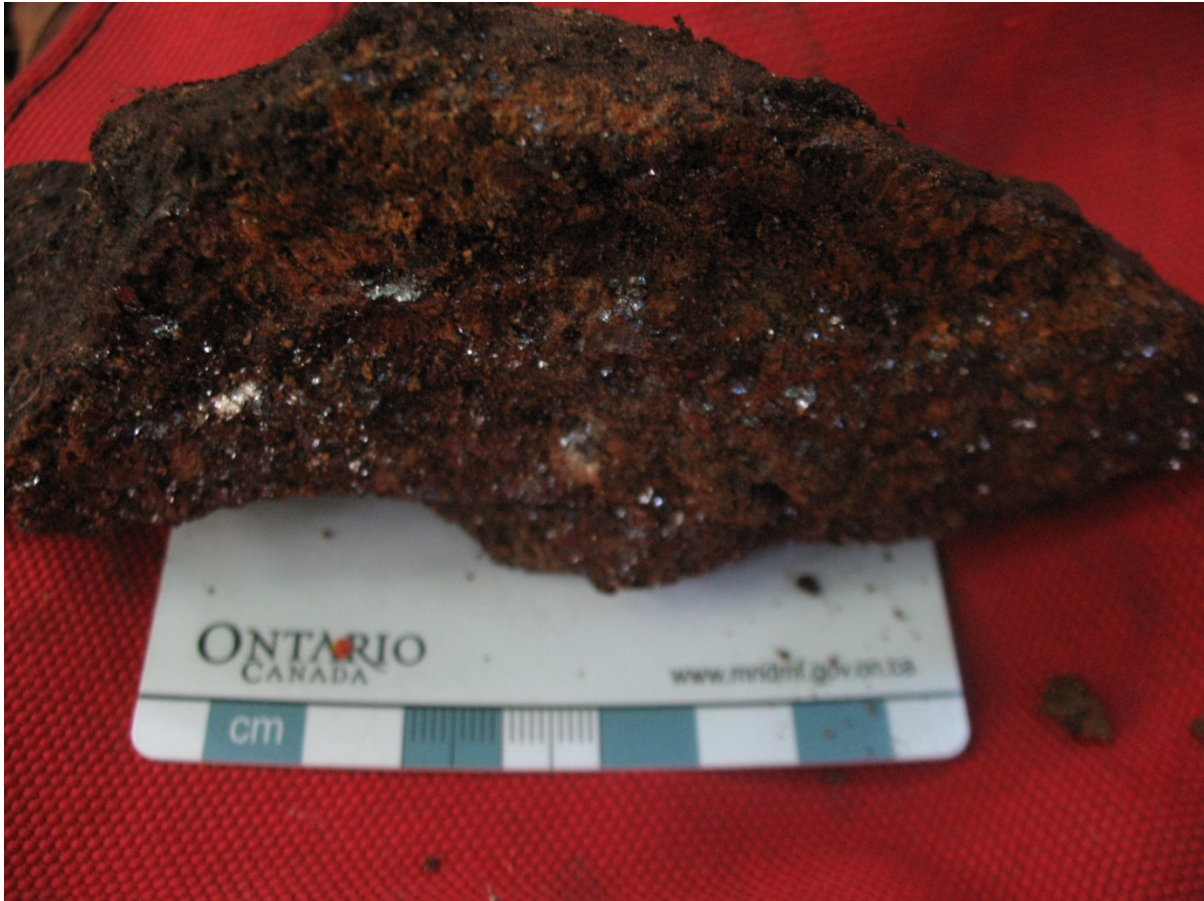


**Figure 4: Picture of Sample 34322**



Sample 34323

UTM Zone 17  
722794E  
4989113N



**Figure 5: Picture of Sample 34323**

### 3.2 DAY-2 – JULY 24, 2014

Sample 34324

UTM Zone 17  
723445E  
4989280N

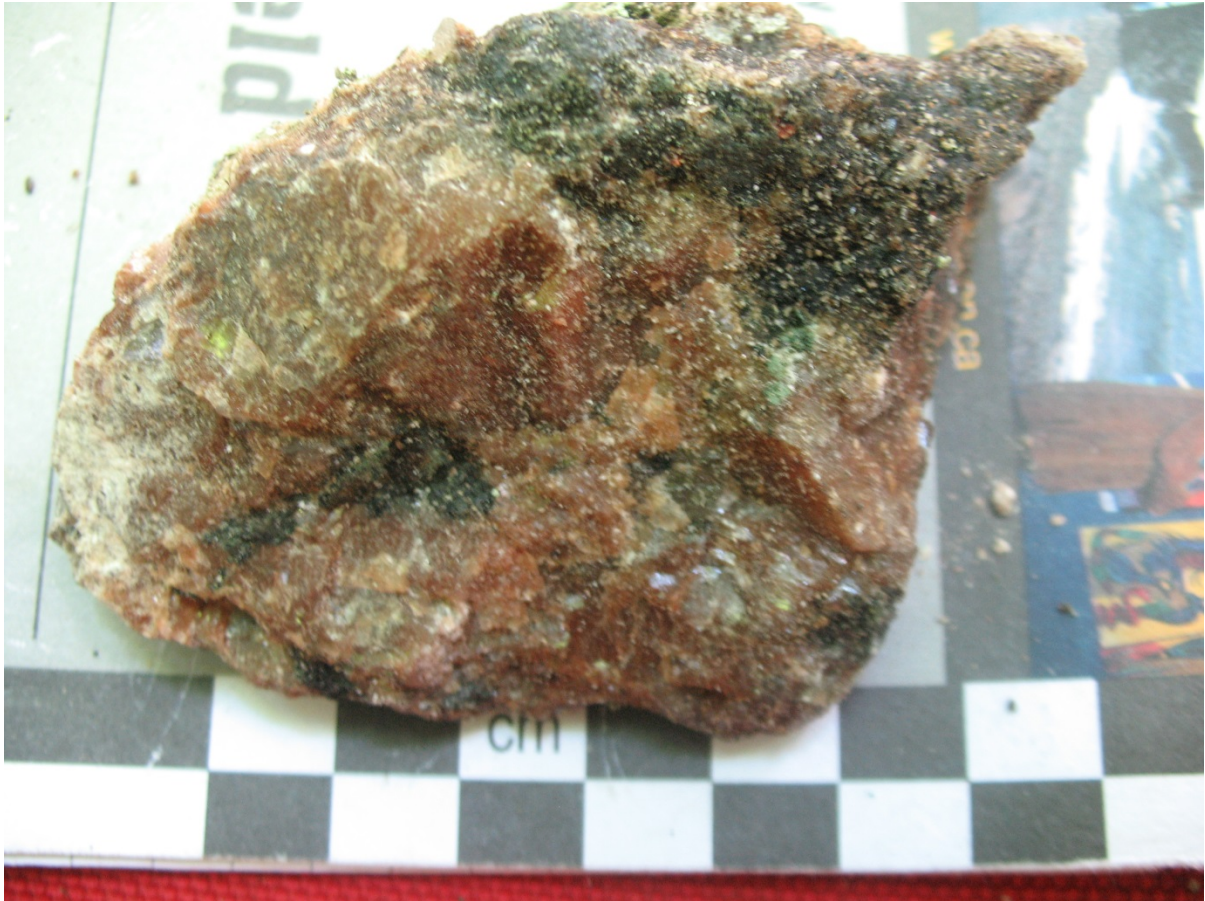


**Figure 6: Picture of Sample 34324**



Sample 34325

UTM Zone 17  
723151E  
4989025N



**Figure 7: Picture of Sample 34325**

Sample 34326

UTM Zone 17  
723195E  
4988953N



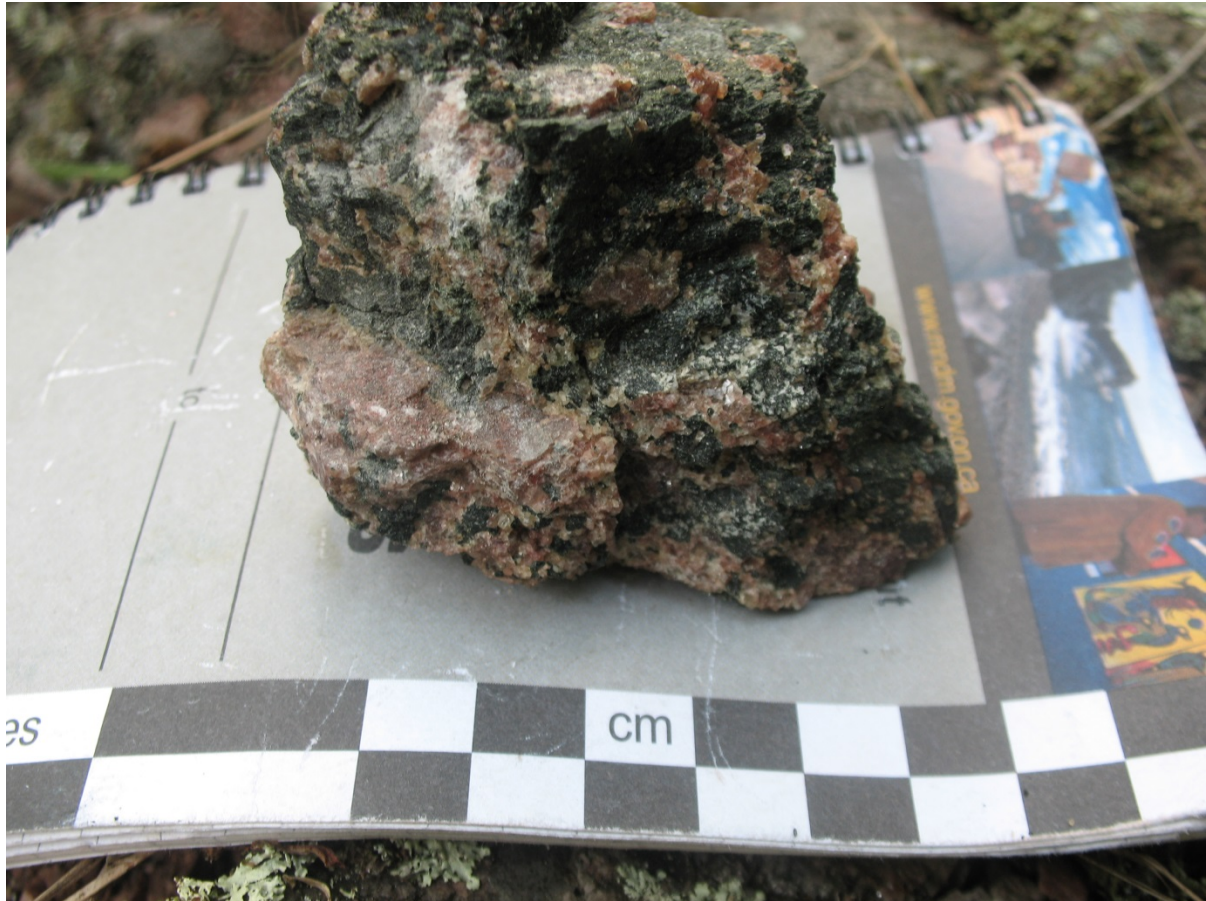
**Figure 8: Picture of Sample 34326**



### 3.3 DAY-3 – JULY 25, 2014

#### Sample 34327

UTM Zone 17  
723126E  
4987950N



**Figure 9: Picture of Sample 34327**

---

**3.4 DAY-4 – JULY 26, 2014**

Sample 34328

UTM Zone 17  
723515E  
4987786N



**Figure 10: Picture of Sample 34328**

---

## APPENDIX A

### STATEMENT OF QUALIFICATIONS

I, C. Jason Ploeger, hereby declare that:

1. I am a professional geophysicist with residence in Larder Lake, Ontario and am presently employed as a Geophysicist and Geophysical Manager of Canadian Exploration Services Ltd. of Larder Lake, Ontario.
2. I am a Practising Member of the Association of Professional Geoscientists, with membership number 2172.
3. I graduated with a Bachelor of Science degree in geophysics from the University of Western Ontario, in London Ontario, in 1999.
4. I have practiced my profession continuously since graduation in Africa, Bulgaria, Canada, Mexico and Mongolia.
5. I am a member of the Ontario Prospectors Association, a Director of the Northern Prospectors Association and a member of the Society of Exploration Geophysicists.
6. I do not have nor expect an interest in the properties and securities of **Skead Holdings Ltd.**
7. I am responsible for the final processing and validation of the survey results and the compilation of the presentation of this report. The statements made in this report represent my professional opinion based on my consideration of the information available to me at the time of writing this report.



C. Jason Ploeger, P.Geo., B.Sc.  
Geophysical Manager  
Canadian Exploration Services Ltd.

Larder Lake, ON  
December 12, 2014

**APPENDIX B**

**GARMIN GPS MAP 62S**



Physical & Performance:	
Unit dimensions, WxHxD:	2.4" x 6.3" x 1.4" (6.1 x 16.0 x 3.6 cm)
Display size, WxH:	1.43" x 2.15" (3.6 x 5.5 cm); 2.6" diag (6.6 cm)
Display resolution, WxH:	160 x 240 pixels
Display type:	transflective, 65-K color TFT
Weight:	9.2 oz (260.1 g) with batteries
Battery:	2 AA batteries (not included); NiMH or Lithium recommended
Battery life:	20 hours
Waterproof:	yes (IPX7)
Floats:	no
High-sensitivity receiver:	yes



Interface:	high-speed USB and NMEA 0183 compatible
------------	---

Maps & Memory:	
Basemap:	yes
Preloaded maps:	no
Ability to add maps:	yes
Built-in memory:	1.7 GB
Accepts data cards:	microSD™ card (not included)
Waypoints/favorites/locations:	2000
Routes:	200
Track log:	10,000 points, 200 saved tracks

Features & Benefits:	
Automatic routing (turn by turn routing on roads):	yes (with optional mapping for detailed roads)
Electronic compass:	yes (tilt-compensated, 3-axis)
Touchscreen:	no
Barometric altimeter:	yes
Camera:	no
<u>Geocaching-friendly:</u>	yes (paperless)
<u>Custom maps compatible:</u>	yes
Photo navigation (navigate to geotagged photos):	yes
Outdoor GPS games:	no
Hunt/fish calendar:	yes

---

Sun and moon information:	yes
Tide tables:	yes
Area calculation:	yes
Custom POIs (ability to add additional points of interest):	yes
Unit-to-unit transfer (shares data wirelessly with similar units):	yes
Picture viewer:	yes
Garmin Connect™ compatible (online community where you analyze, categorize and share data):	yes

- *Specifications obtained from [www.garmin.com](http://www.garmin.com)*

**APPENDIX C**

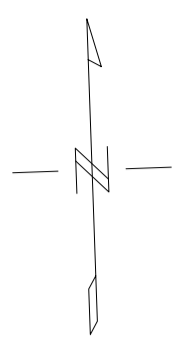
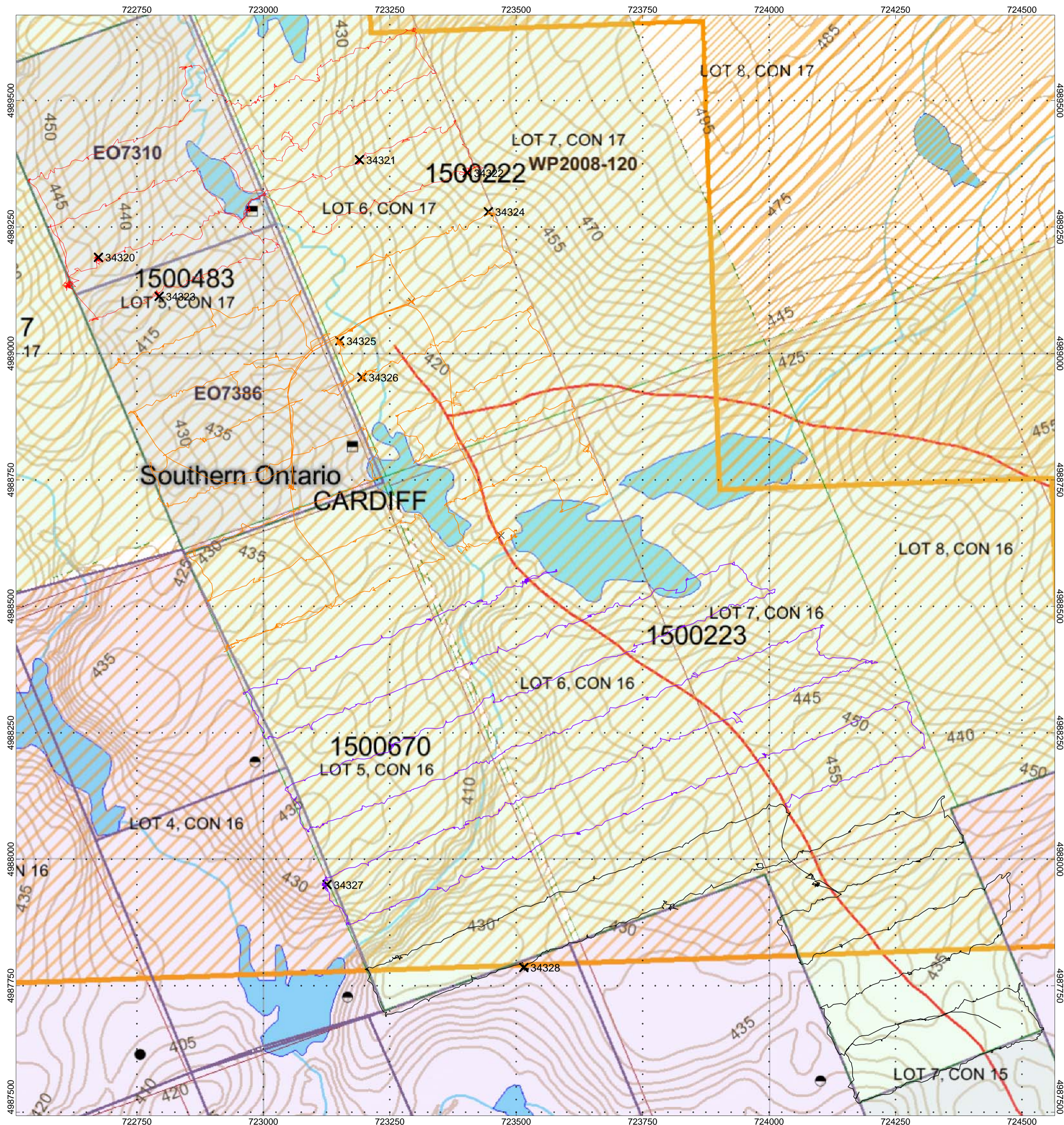
**LIST OF MAPS (IN MAP POCKET)**

Posted prospecting plan map (1:5000)

- 1) SKEAD-HALLS LAKE-PROSP

**Total Maps = 1**





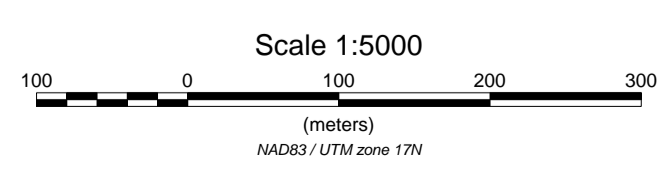
- July 23, 2014
- July 24, 2014
- July 25, 2014
- July 26, 2014

**SKEAD HOLDINGS LTD.**

**HALLS LAKE PROPERTY**  
Cardiff Township, Ontario

PROSPECTING TRAVERSE PLAN MAP

July 23, 2014  
July 24, 2014  
July 25, 2014  
July 26, 2014



Operated By: Bruce Lavalley.  
Processed by: C Jason Ploeger, B.Sc.  
Map Drawn By: C Jason Ploeger, B.Sc.  
December 2014



Drawing: SKEAD-HALLS LAKE-PROSP



Halls - South.

34320 - Pegmatite?

- Maple

- Slight slope / cliff face / SW

- Photos - 2493, 2494.

34321 - Pegmatite

- Mix

- Slight slope / SW

- Photos - 2495, 2496.

34322 - Pegmatite

- Maple

- Slight / mod slope / SW

- Photos - 2497, 2498.

34323 - Pegmatite

- Maple

- Moderate slope

- Photos, 2499, 2500

34324 - Pegmatite

- Maple

- Slight slope / E

- Photos - 2501, 2502.

34325 - Pegmatite

- Maple / Balsam

- Slight slope / E / Rock face

- Photos - 2503, 2504

34326 - Pegmatite (Large crystals)

- Maple

- Flat

- Photos - 2505, 2506.

34327 - Pegmatite (Large crystals)

- Maple / Ash

- Moderate slope / SE

- Photos 2507, 2508

34328 - Pegmatite

- Maple

- Moderate slope / SE

- Photos - 2509, 2510

Addendum  
to

Report

W1590-00650

