



Summary Report

On Prospecting

Foster-Harley Claim

4278226

In

Harker Township

Larder Lake Mining Division

Ontario, Canada

St Andrew Goldfields Ltd., 20 Adelaide Street East, Suite 1500
Toronto, Ontario Canada M5C 2T6

www.sasgoldmines.com

February 1, 2016
John McKenzie

TABLE OF CONTENTS

Introduction, Location & Access, Property Geology:	Pg. 1
Previous Work, Prospecting/Traverses:	Pg. 2
Results & Recommendations:	Pg. 4
Statement of Qualifications:	Pg. 5

LIST OF FIGURES

Fig. 1	Regional Location Map
Fig. 2	Property Location Map Within Harker Township
Fig. 3	Property Access Map
Fig. 4	Property Geology Map
Fig. 5	Prospecting Traverses Map

LIST OF APPENCIES

Appendix 1:	Assay Certificates
-------------	--------------------

Introduction

On May 4, 2015, SAS purchased the mining rights to the Foster Harley claim block from Mr. L. Eden, a Timmins area prospector. Beginning on July 4th 2015, SAS personnel carried out a mapping/prospecting/sampling program on mining claim 4278226 in Harker Township (refer to **Fig 2-5**), Larder Lake Mining Division. Field work in the claim block was completed on August 6, 2015. Field work focused on identifying outcrop exposures, sampling and producing detailed descriptions of lithologies encountered. Property samples were sent to Swastika Laboratories for analysis. Phase one samples (E515XXXX sequence) were assayed by the Holt Mine assay lab & as such, are not being submitted for credit due to the ownership of the lab by SAS. Rock descriptions for these samples are included in Table 1.

Location/Access/Property Description

Mining Claim 4278226 (consisting of 6 units) is located in the central portion of Harker Township, within the Larder Lake Mining Division. Access to the claim is made by driving along Highway 101 East approximately 50 km East of the Town of Matheson Ontario, turning south onto Highway 672 continuing on for 4km before turning West onto an unnamed logging road for 4km. From this point, a trail leads due south, the northern claim boundary limit is reached after a 150 m walk (refer to **Fig 3** for claim access details).

Property Geology

The claim is covered by overburden depths of up to approximately 40m. Outcrop exposure is primarily located within the north-central portion of the claim block (refer to **Fig 4** for details). During the course of field work activity, three primary rock units were encountered in observable outcrop. These were comprised of locally brecciated, silicified pillowed mafic volcanics, massive chloritic mafic volcanics and a massive fine grained mafic dyke unit. The most notable feature however is the NE-SW trending, south dipping, Ghostmount Fault Zone. The Ghostmount Fault is considered to be one of the primary structural controls associated with numerous occurrences and deposits, including the SAS owned Holt Mine.

Several small scale diamond drilling programs have been carried out within the claim limits, these have afforded a view of lithology, structure and mineralization present within the southern portion of the claim where outcrop exposure is non-existent.

Previous Work

The first recorded work to occur within the claim boundary dates back to 1984. The following is a brief break down of programs carried out.

1984 Argentex Resource Exploration Corp. carried out ground based VLF and mag geophysical surveys along with a small prospecting program (no sample or assay data available).

1985 Perrex Resources Inc. Flew an Airborne EM and Mag survey over entire area.

1987 American Barrick drilled one diamond drill hole to a depth of 263.9 m. (MC.87-370).

1988 American Barrick drilled one diamond drill hole to a depth of 349.6m (MC.88-467).

1989 American Barrick carried out a diamond drill program totaling 2707m within 9 drill holes. Of these nine holes, 7 were completed within the limits of claim number 4278226. These seven holes totaled 2020m.

2015 Prospecting/Traverses

Day 1 (July 4th, 2015)

A three person field crew consisting of two SAS geologists as well as a summer student left from the Matheson field office at 7:30 am, reaching the work site approximately an hour later. Due to the fact that the property was a relatively new acquisition, the first two days were spent carrying out traverses along the exterior lines of the claim block. This served the dual purposes of reconnaissance of the area as well as familiarization with the property boundaries.

Day 2 (July 5th 2015)

As with the previous day, a 3 person crew left the field office at approximately 7:30 am and arrived on site approximately an hour later. Work for the day consisted of finishing up the previous day's traverses of the area. No significant amount of outcrop was encountered during the first two days of work. Trail networks and several existing grid lines however were identified and used later on as points of access. Refer to **Fig's 5 and 6** for details of the traverses carried out on the first two days of field work.

Day 3 (July 6th 2015)

A series of outcrop exposures occurring within the North-Central portion of the claim were investigated by SAS personnel, Refer to **Fig 7** for sample and outcrop locations. The area investigated was comprised almost entirely of pillowed mafic volcanic units. Minor amounts of

veining and pyrite mineralization where noted, however these occur primarily as pillow selvage features. Averaging 15cm long by 5cm wide. Outside of these the area is relatively unaltered, with minor deformation of pillows and no significant structure noted. Minor anomalous Au values were encountered, see table below for assays and descriptions of samples taken.

Table 1: Phase 1 Sampling

Sample ID	Easting	Northing	Rock Code	Description	Datum	Zone
E5156336	586500	5370732	VMX	Weakly silicified Pillowed/Brecciated Mafic volcanic. Tr py, minor Q-C stringers.	Nad83	17
E5156337	586505	5370728	VMX	Weakly silicified Pillowed/Brecciated Mafic volcanic. 1-2 py, moderate Q-C stringers.	Nad83	17
E5156338	586523	5370737	VMX	Weakly silicified Pillowed/Brecciated Mafic volcanic. 1-2 py, moderate Q-C stringers.	Nad83	17
E5156339	586530	5370743	VMX	Weakly silicified Pillowed/Brecciated Mafic volcanic. 1-2 py, moderate Q-C stringers.	Nad83	17
E5156340	586544	5370753	VMX	Weakly silicified Pillowed/Brecciated Mafic volcanic. 1-2 py, moderate Q-C stringers.	Nad83	17
E5156341	586586	5370753	VMX	Pillowd Mafic Volcanic, med-coarse grained amphibole crystals, Tr. py.	Nad83	17
E5156342	586617	5370657	VMX	Weakly silicified Pillowed/Brecciated Mafic volcanic. Tr py, minor Q-C stringers.	Nad83	17

Day 4 (August 27th 2015)

As part of a larger, regional scale sampling program, the Foster-Harley property was re-examined by Compass Exploration of Timmins. A two man team carried out a secondary prospecting and reconnaissance sampling in the hopes of identifying areas of outcrop exposure that may have been missed in the initial pass. As can be seen in **Fig 5**, a handful of samples were collected just north of the previously identified outcrop area. Samples collected consisted of similar Pillowed mafic volcanic units as were identified in previous work as well as massive portions of mafic volcanic. No anomalous or significant assays were identified from this round of sampling. See table below for sample locations, assays and descriptions.

Table 2: Phase 2 Sampling

Sample ID	Easting	Northing	Au ppm	Rock Code	Description	Datum	Zone
E501834	586482	5370307	0.005	VMM	Massive mafic volcanic, minor chlorite and silicification, trace pyrite.	Nad83	17
E501835	586498	5370868	0.005	VMM	Massive mafic volcanic, minor chlorite and silicification, trace pyrite in concentrated masses	Nad83	17
E501836	586504	5370713	0.005	VMP	Pillowed mafic volcanic, weak silicification, ~7% networked quartz stringers with chlorite halos and trace pyrite.	Nad83	17
E501837	586578	5370840	0.005	VMM	Massive mafic volcanic, weak chlorite and 1% disseminated pyrite.	Nad83	17
E501894	586485	5370871	0.005	VMM	Massive mafic volcanic very weak chlorite and 1% splashy pyrite.	Nad83	17
E501895	586499	5370779	0.005	VMM	Unaltered basalt	Nad83	17
E501896	586529	5370701	0.005	IMO	Fine grained mafic dyke. Minor silicification and trace splashy pyrite.	Nad83	17

Results/Recommendations

During the course of field exploration activity, several areas of outcrop exposure were identified. As was initially expected the areas consisted primarily of variable textured mafic volcanic units, with minor mafic intrusive units intermixed. Historic drilling had identified several areas of significant Au values, however these all seem to be associated with the Ghostmount fault, which by its nature is a soft, friable unit and not prone to occur as a surficial exposure. As such, traverses over the areas of interest associated with Au values within drill core produced no visible signs of outcrop exposure.

Au values received throughout the course of sampling identified several low-moderately anomalous values; however none of these could be regarded as significant. This being said, with no significant amount of exposure of what would be the primary target area for future diamond drilling activity (Ghostmount Fault), the presence of anomalous Au values is a positive indication that a large scale Au bearing zone may be present in the area. Due to the limited amount outcrop exposure present within the southern portion of the claim block, Mag and IP geophysical surveys may prove to be beneficial in providing data on structure and possible mineralized horizons in the area. Diamond drilling would then be an option to follow up on targets of interest.

Statement of Qualifications

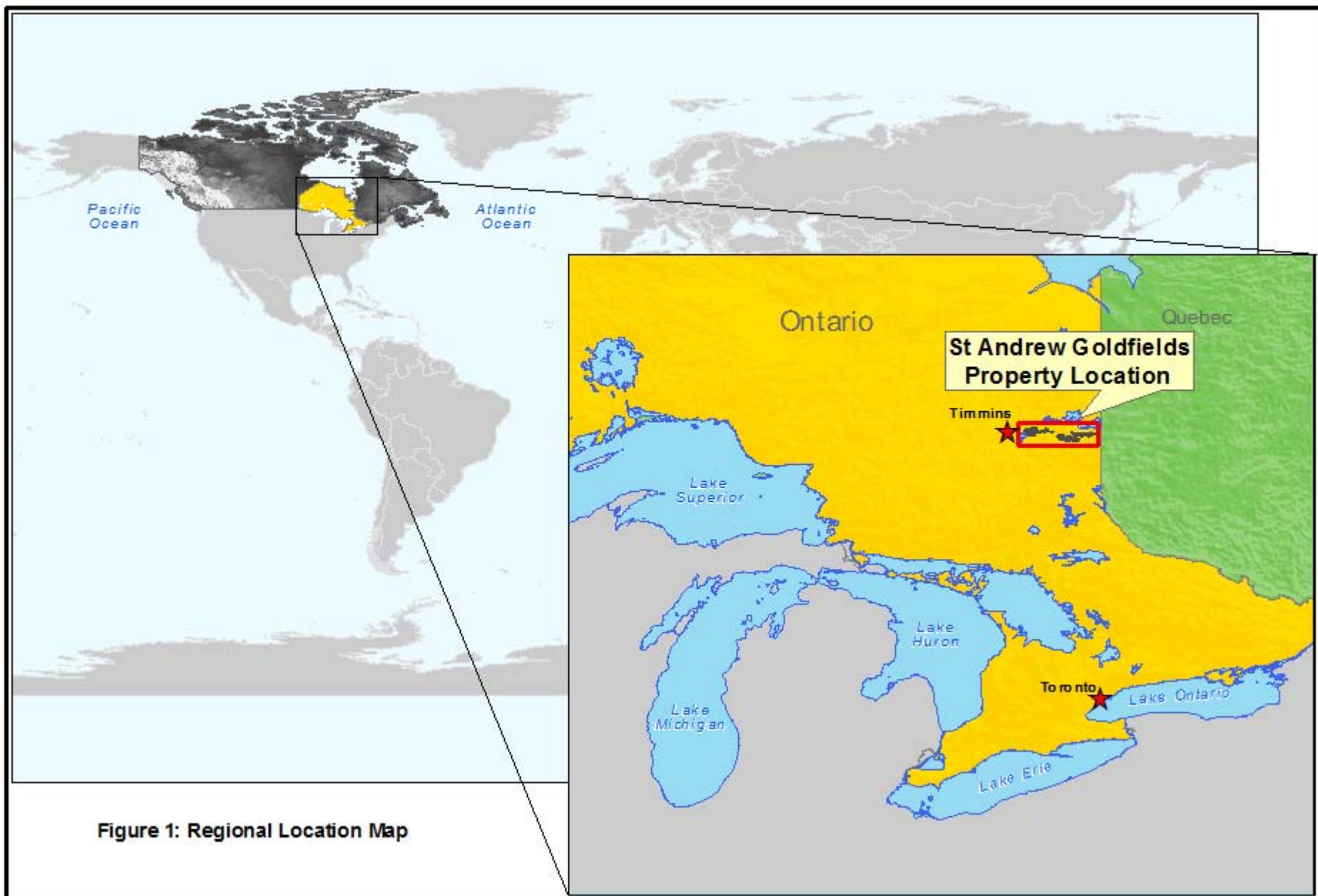
- I (John McKenzie) currently reside at 313 Vimy Ave. Timmins On. P4N 4H3
- This report is being submitted on behalf of St. Andrews Goldfields Ltd. For whom I am an assigned agent.
- I have no interests either directly or indirectly nor do I expect to receive any in the future in regards to the Foster-Harley Property
- I am a Graduate of Cambrian College's Geological Technician Program.
- I have completed my Mining Act Awareness Program and have been assigned the verification number 4EC3-6704-542E-AF12.
- During the course of the prospecting program J.V. Bonhomme, Cole O'Neil and Ray Toews also assisted in field work and data compilation.

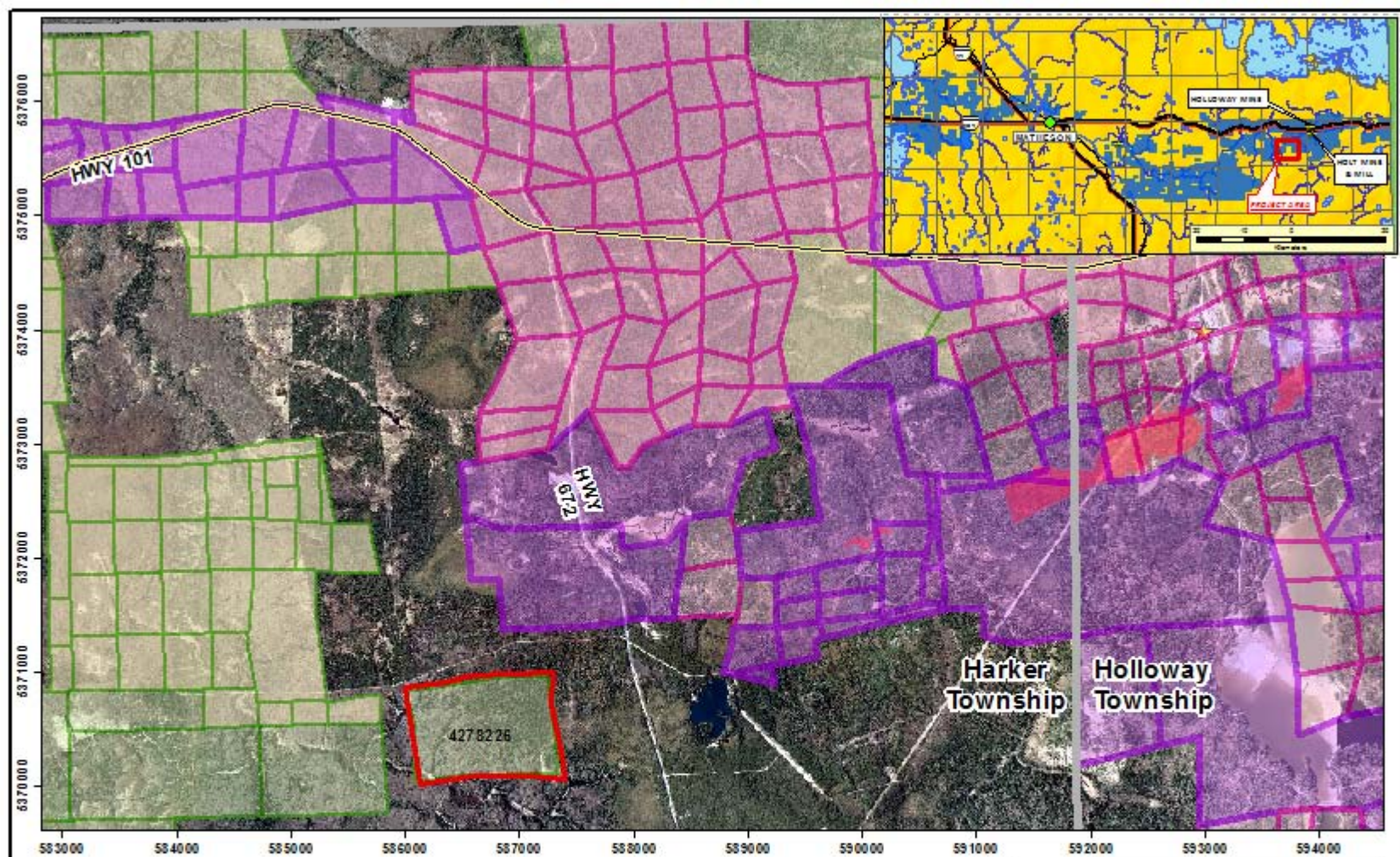
February 1, 2016



John McKenzie

Senior Exploration Technician





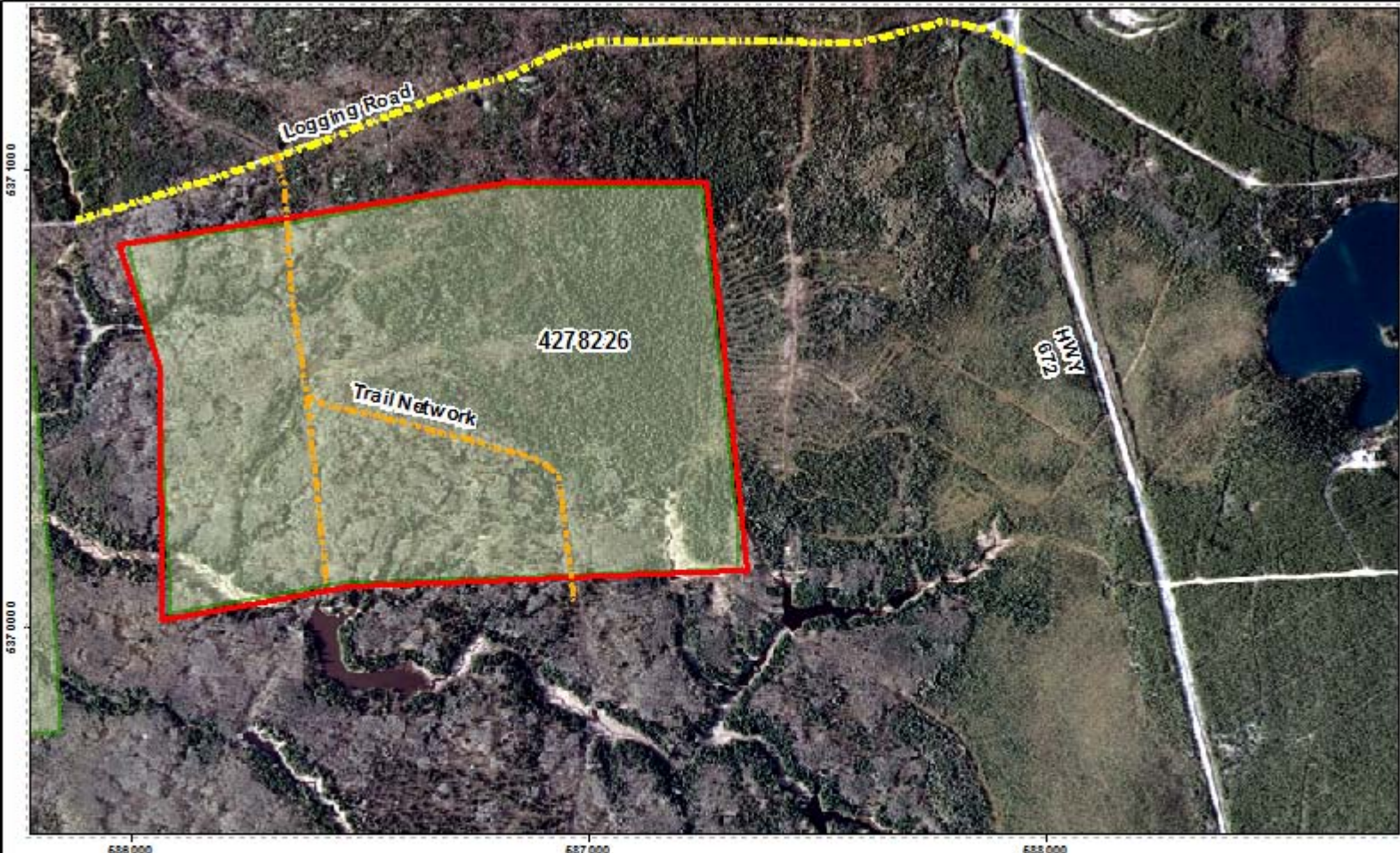
Legend

- SAS Claims
- SAS Lease
- SAS Patent
- Foster-Harley Property

St Andrew Goldfields Ltd.
 Northeastern Ontario
Foster Harley Property - Harker Twp
Fig 2 - Location Map
 Datum: NAD 83 Zone 17N
 January 2016

1,500 750 0 1,500
 Meters



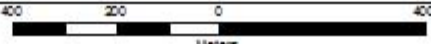


Legend

	SAS Claims		<u>Access</u>
	Foster-Harley Property		Trail Network

St Andrew Goldfields Ltd.
 Northeastern Ontario
 Foster Harley Property -Harker Twp
Fig 3: Access Map

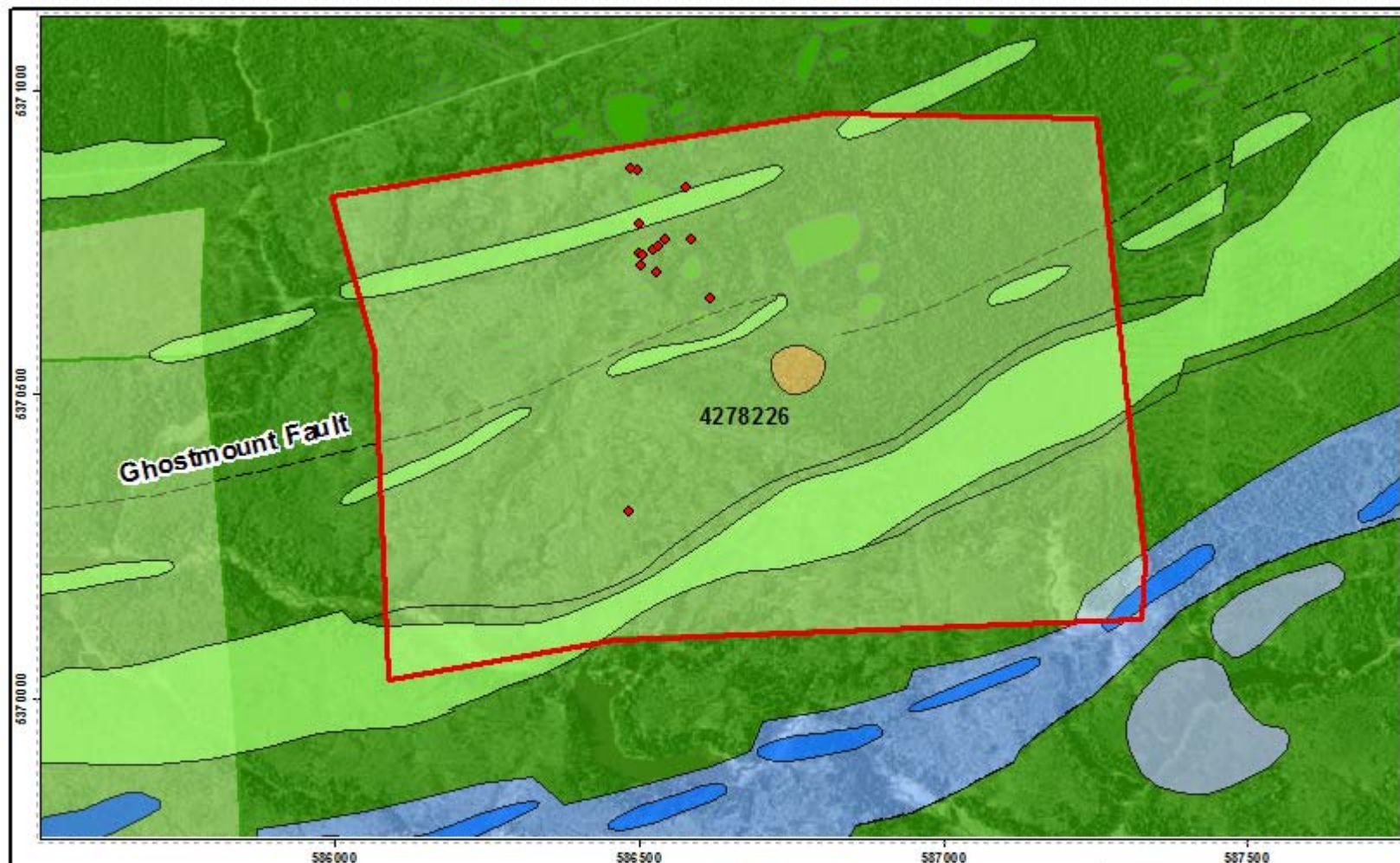
Datum: NAD 83 Zone 17N
 January 2016



Meters



SAS
 ST ANDREW GOLDFIELDS LTD.




Legend

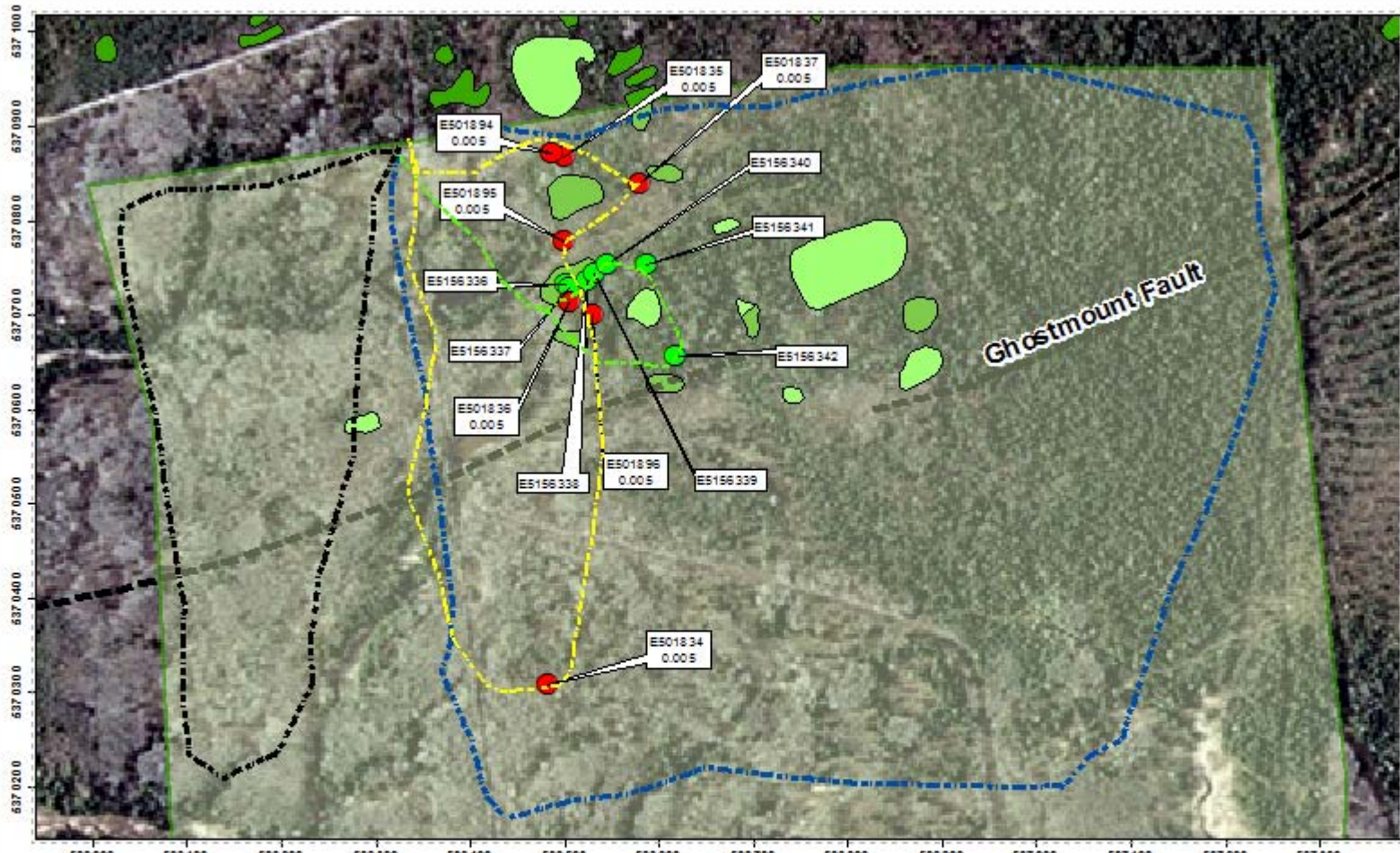
- Syenite
- Altered Mafic Volcanic
- Foliated Mafic Volcanic
- Diorite
- Altered Intermediate Volcanics
- Prospecting Samples
- Foster-Harley Property
- SAS Claims

St Andrew Goldfields Ltd.
Northeastern Ontario
Foster Harley Property - Harker Twp
Fig 4 - Geology Map

Datum: NAD 83 Zone 17N
 January 2018

300 150 0 300

 Meters





Legend

- Pillowed Mafic Volcanics
- Massive Mafic Volcanics
- SAS Claims Foster Harley Claim 4278226

Prospecting Samples

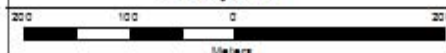
- Phase 1
- Phase 2

Traverses

- Traverse Day 1
- Traverse Day 2
- Traverse Day 3
- Traverse Day 4

St Andrew Goldfields Ltd.
Northeastern Ontario
Foster Harley Property
Fig 5 - Traverse & Sample Map

Datum: NAD 83 Zone 17N
 January 2016





Appendix 1

Assay Certificates



Established 1928

Swastika Laboratories Ltd

Assaying - Consulting - Representation

Page 1 of 1

Assay Certificate

Certificate Number: 15-2061

Company: **St. Andrew Goldfields Ltd.**
 Project: **REGIONAL EXPLORATION**
 Attn: **David Schonfeldt**

Report Date: 21-Sep-15

We hereby certify the following Assay of 23 rock/grab samples submitted 18-Sep-15 by David Schonfeldt

Sample Number	Au	Au Chk
	FA-MP	FA-MP
	g/Mt	g/Mt
E501834	< 0.01	
E501835	< 0.01	
E501836	< 0.01	
E501837	< 0.01	

E501894	< 0.01	
E501896	< 0.01	

Blank Value	< 0.01	
SH69	1.33	

Certified by Jing Lin
Jing Lin, M Sc.



Established 1928

Swastika Laboratories Ltd

Assaying - Consulting - Representation

Page 1 of 1

Assay Certificate

Certificate Number: 15-2253

Company: **St. Andrew Goldfields Ltd.**

Project: Report Date: 20-Oct-15

Attn: Yvan Labelle

We hereby certify the following Assay of 24 rock/grab samples submitted 19-Oct-15 by Yvan Labelle

Sample Number	Au FA-MP g/Mt	Au Chk FA-MP g/Mt
---------------	---------------------	-------------------------

Blank Value	< 0.01	
SH69	1.33	

E501895	< 0.01	
---------	--------	--

Certified by Jing Lin
Jing Lin, M Sc.