

We are committed to providing [accessible customer service](#).
If you need accessible formats or communications supports, please [contact us](#).

Nous tenons à améliorer [l'accessibilité des services à la clientèle](#).
Si vous avez besoin de formats accessibles ou d'aide à la communication, veuillez [nous contacter](#).

CLAIM HOLDER, SHERRY SWAIN

Prospecting

Nicol Twp. Larder Lake Division

Sherry Swain

8/25/2015

This report is being submitted for assessment work.

Prospecting Report

2014/2015

Nicol Township, Larder Lake Division

Claim #4227308

Introduction

The above claim was prospected by Sherry Swain A48047 and helper Fred Swain A48086 from Aug. 29/14 to May 5/15. Samples were take for assay. The claim is 2 units and is held 100% in the name of Sherry Swain.

Access

Access is by way of Hwy. 560 about 3 km. East of the hamlet of Gowganda.

A logging road heads north from the highway into the claim.

General Geology

The claim is an old surveyed claim WJ9 and is tied onto the historic Morrison Mine. The Morrison Mine produced 22,018 pds. of cobalt and 719,201 oz. of silver by 1968. The original staking took place in 1909. Early Precambrian mafic metavolcanics consisting of flows and pyroclastic rocks underly WJ9. Nippising Diabase dips north under the metavolcanic assemblage. A northwest striking fault cuts through the Morrison Mine.

Shaft sinking on WJ9 to 55 ft. Took place in 1925 and was continued to 400 ft. in 1926. Lateral work totaled 1838 ft. The upper diabase contact was encountered at 188 ft.

Work Performed

The prospecting was performed on Aug.29/14, May 2,4/15.

Lines were traversed in a northwest direction. A GPS reading was taken at sample locations.

Eight lines were traversed and samples taken where possible gold values could be obtained.

Ten samples were submitted to Polymet Labs in Cobalt , Sept. 26/14, Oct. 3 & 4 /14.

Results of Work

Outcrops of Matachewan Diabase were located at the northeast corner of the claim.

Carbonate rocks , light grey with disseminated pyrite were found between L1 and the swamp on the northern boundary. A siliceous light grey rock with a carbonate rind and silver pyrite blebs was found at the north end of L1. Volcanics, dark green in colour with fine sulphides were found between L3-L4 on the northeast end of the claim. Carbonate rocks were found near lines 4 and 5 on the northwest side of the claim. Schistose rocks with orange/brown staining were located at the north end of L4. At the north end of L3 a shear zone with qtz. blebs was found.

Assay Results

30956- carbonate – nil Au

30957- carbonate – 137 ppb's Au

30958 – schist – nil-Au

30959- carbonate -480 ppb's Au

30960- grey volcanic- 411 ppb's –Au

ML-1- nil Au-carbonate w/pyrite and black crystals

ML-2-nil Au-carbonate w/pyrite- grey

ML-3- nil Au-carbonate w/qtz

ML-5- nil-Au- carbonate w/pyrite

ML-6- 617 ppb's Au- carbonate – disseminated fine pyrite

Conclusion

The carbonate rocks had anomalous gold values. A discovery of a suite of gold bearing carbonate rocks just west of the claim was made by the author of this report in 2004 and were subsequently optioned to Transition Metals Corp. and made their flagship project.

Directly north of this claim on the east side of Miller Lake the author also discovered more carbonate rocks with gold values. What was thought to be only a silver play has now become a

significant gold play as a result of the author's discovery in 2004.

Exploration will continue on this claim for that reason.

Sherry Swain

PROSPECTING / ASSAYS

CLAIM 4227308

NICOL TWP. LARDER LAKE DIV.

2014 / 2015



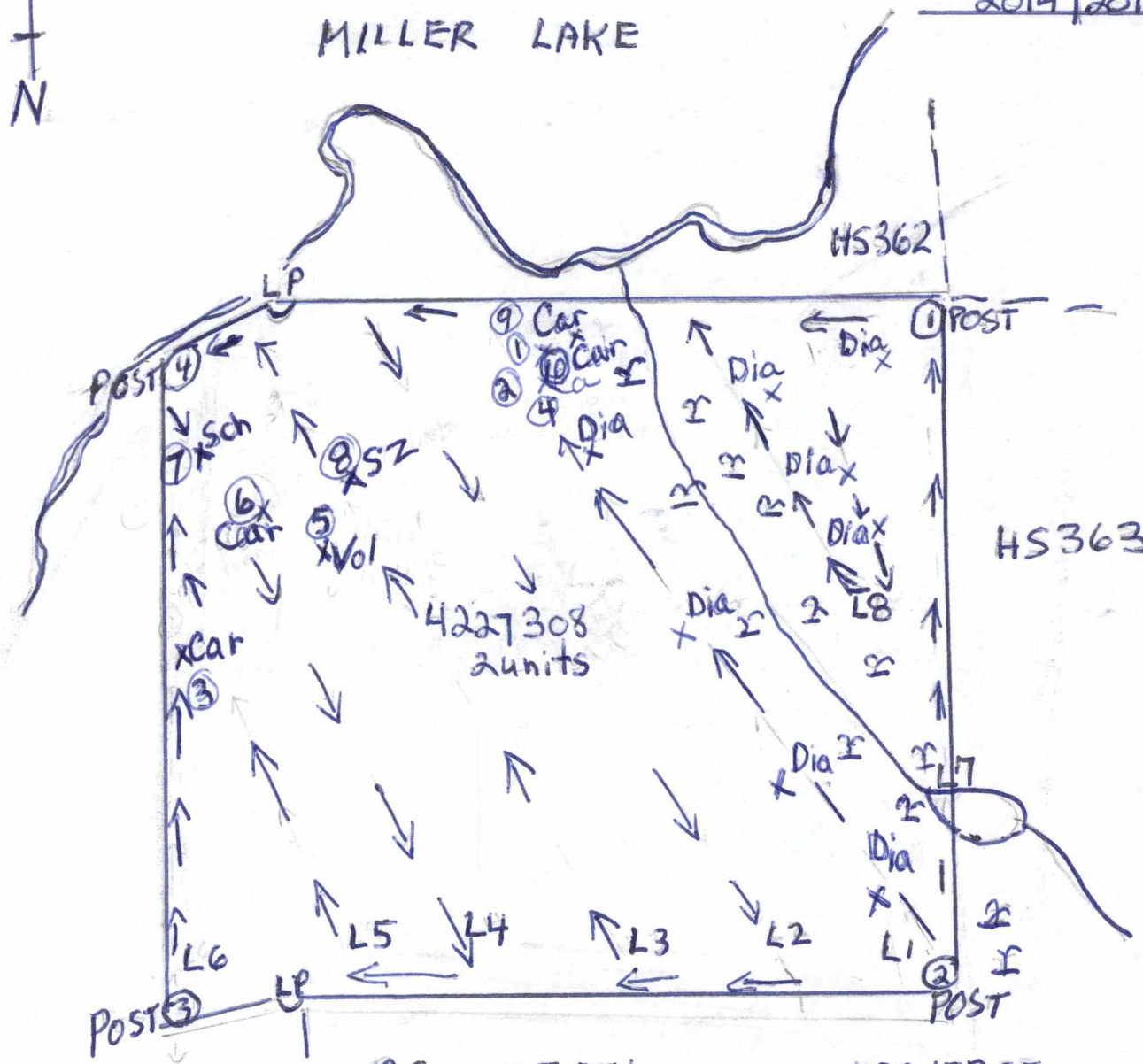
MILLER LAKE

HS362

HS363

LEGEND

ASSAY SAMPLES	①
Sheer zone	SZ
Carbonate	Car
Schist	Sch
MATACHEWAN DIABASE	Dia
Traverse	→
Swamp	⌂
VOLCANICS	Vol



RC. 1227351

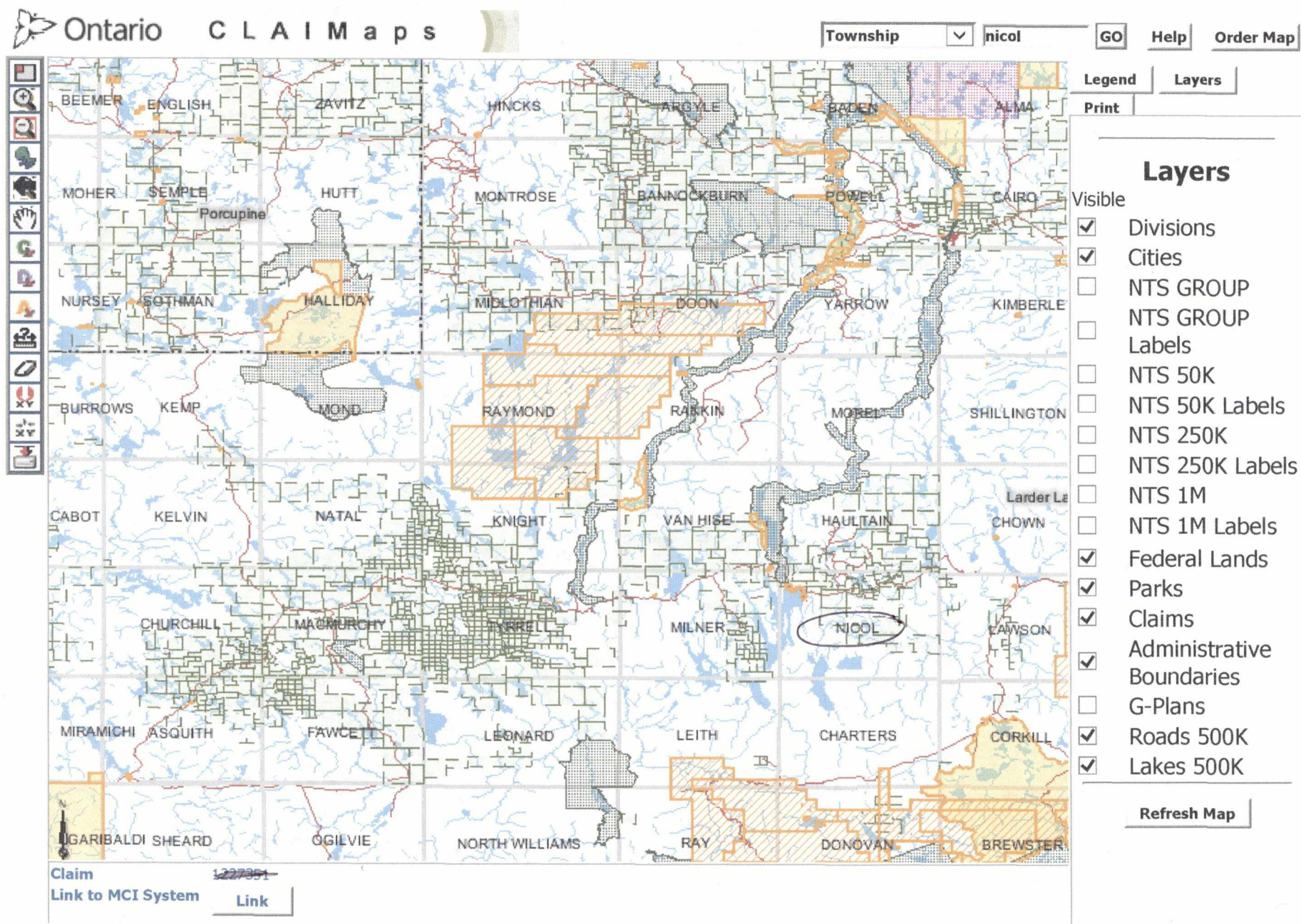
TRAVERSE

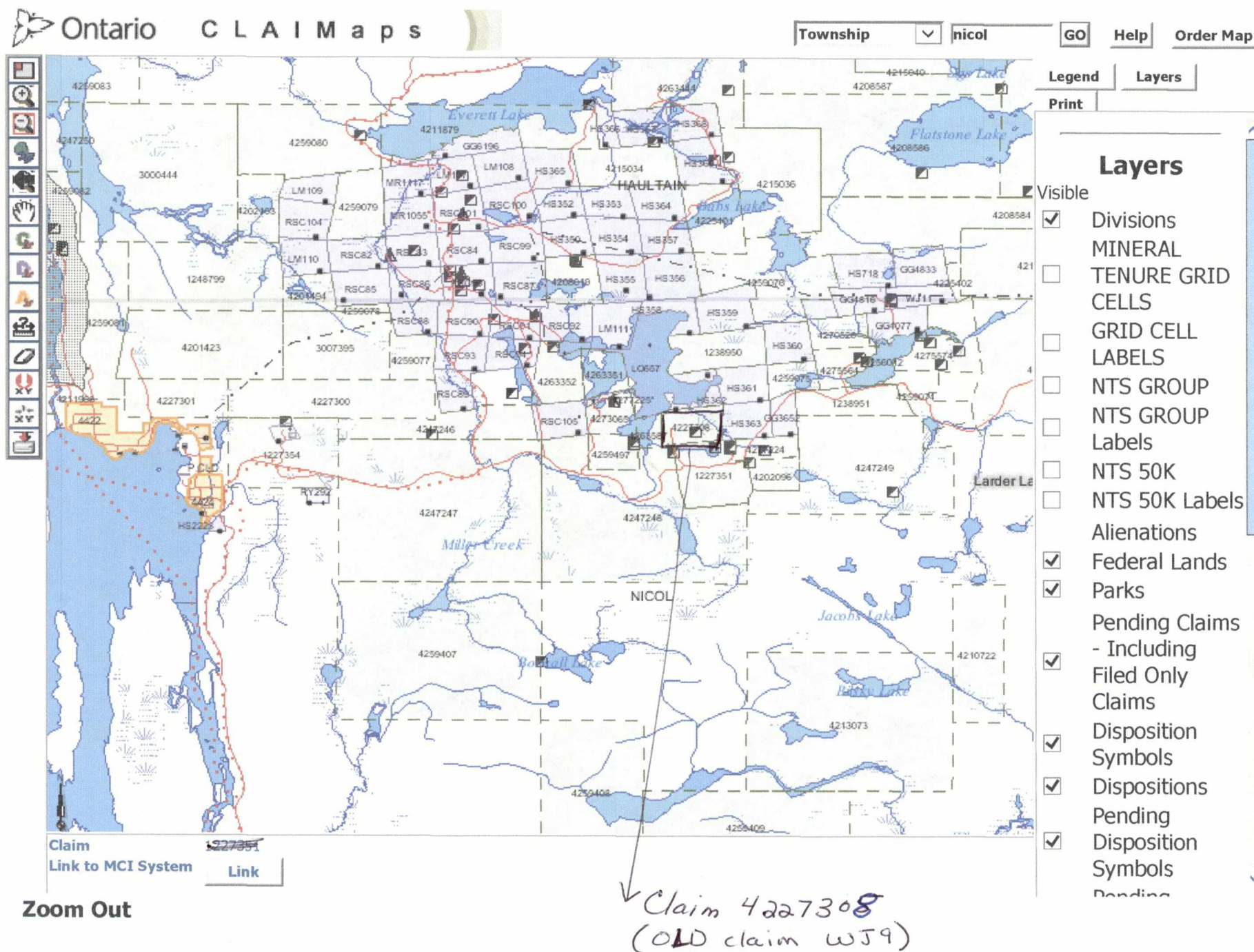
L1-L6 - 2014 - 2 1/2 days - Aug 29/14, May 2/15
 L7-L8 - 2015 - 1/2 day - May 4/15

SCALE

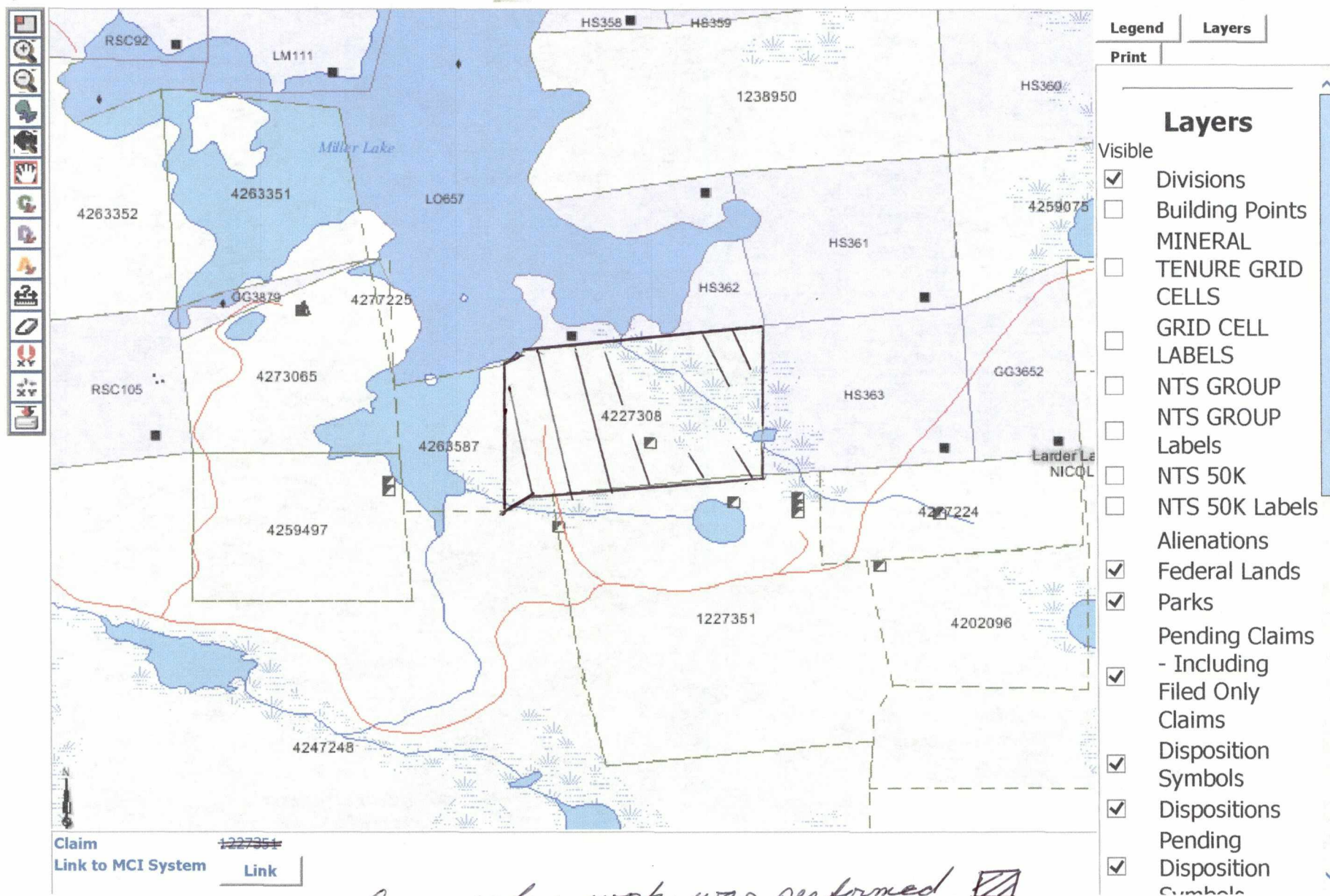
1:4000

S. Swain






Ontario CLAIMaps

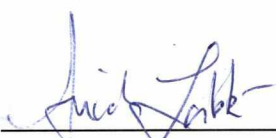
 Township nicol GO Help Order Map



Certificate of Analysis

Sherry Swain

We certify that the assay results in the following
Certificate are factual and true.

Certificate # 20014

Certified by: 
Assayer

Certified by: 
President/Manager

Date: September 26, 2014

Disclaimer: The results included on this report relate only to the items tested.
The Certificate of Analysis should not be reproduced except in
full, without the written approval of the laboratory.

PolyMet Laboratories

CERTIFICATE

20014

Client: Sherry Swain

Job No. 0-139

Date: Sept. 26, 2014

Rocks

Sample #	Au PPB
30956	0.00
30957	137.00
30958	0.00

3 Rocks

Assayer:



Certificate of Analysis

Sherry Swain

We certify that the assay results in the following
Certificate are factual and true.

Certificate # 20078

Certified by: 

Assayer

Certified by: 

President/Manager

Date: October 03, 2014

Disclaimer: The results included on this report relate only to the items tested.
The Certificate of Analysis should not be reproduced except in
full, without the written approval of the laboratory.

PolyMet Laboratories

Client: Sherry Swain
Job No. 0-139

CERTIFICATE

20078

Date: Oct. 03, 2014

Rocks

Sample #

**Au
PPB**

30959

480.00

30960

411.00

2 Rocks

Assayer: _____





Certificate of Analysis

Sherry Swain

We certify that the assay results in the following
Certificate are factual and true.

Certificate # 20085

Certified by: 
Assayer

Certified by: 
President/Manager

Date: October 09, 2014

Disclaimer: The results included on this report relate only to the items tested.
The Certificate of Analysis should not be reproduced except in
full, without the written approval of the laboratory.

PolyMet Laboratories

CERTIFICATE

20085

Client: Sherry Swain

Job #: 0-139

Date: Oct. 09, 2014

Rocks

Sample #

Au
PPB

ML 1	Not Detected
ML 2	Not Detected
ML 3	Not Detected
ML 5	Not Detected
ML 6	617.000

	Au Oz/ton	Au g/tonne
--	--------------	---------------

5 Rocks

Std OxK 119	0.110	3.771
Blank	<.001	<.03

Assayer:

