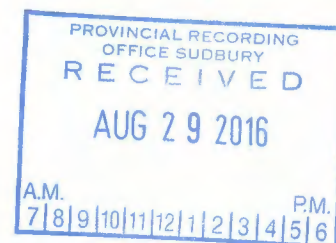


We are committed to providing [accessible customer service](#).
If you need accessible formats or communications supports, please [contact us](#).

Nous tenons à améliorer [l'accessibilité des services à la clientèle](#).
Si vous avez besoin de formats accessibles ou d'aide à la communication, veuillez [nous contacter](#).

2.57111

Prospecting Report2016Nicol Township, Larder Lake DivisionClaim #4227308Introduction

The above claim was prospected by Sherry Swain A48047 and helper Fred Swain A48086 from May 10 to May 11/16. The claim is 2 units and is held 100% in the name of Sherry Swain.

Access

Access is by way of Hwy. 560 about 3 km. East of the hamlet of Gowganda.

A logging road heads north from the highway into the claim.

General Geology

The claim is an old surveyed claim WJ9 and is tied onto the historic Morrison Mine. The Morrison Mine produced 22,018 pds. of cobalt and 719,201 oz. of silver by 1968. The original staking took place in 1909. Early Precambrian mafic metavolcanics consisting of flows and pyroclastic rocks underly WJ9. Nippising Diabase dips north under the metavolcanic assemblage. A northwest striking fault cuts through the Morrison Mine.

Shaft sinking on WJ9 to 55 ft. took place in 1925 and was continued to 400 ft. in 1926. Lateral work totaled 1838 ft. The upper diabase contact was encountered at 188 ft.

Work Performed

Lines were traversed east / west across the southern section of the claim as a continuation of the prospecting done in 2015. There were 6 lines traversed and L1 – L6 were at spacing of 30 meters. No samples were taken for assay. A map with this report shows outcrop located.

Results of work

The claims are predominantly quartz diabase. An old pit was put into ultramafics on line 1. There was some sparse mineralization. A shaft was sunk in the diabase between line 4 and 5. This was a big shaft as the dump pile was very large. It is presumed that this shaft was WJ9 from 1926. Dump rock contained chalcopyrite and cobalt bloom. The diabase outcrops to the northeast. There is a swampy area on the eastern end and lines 3 to 6 were shortened due to this.

Due to the silver that was recovered in the area years ago, the area should be looked at for continuation of high grade silver.

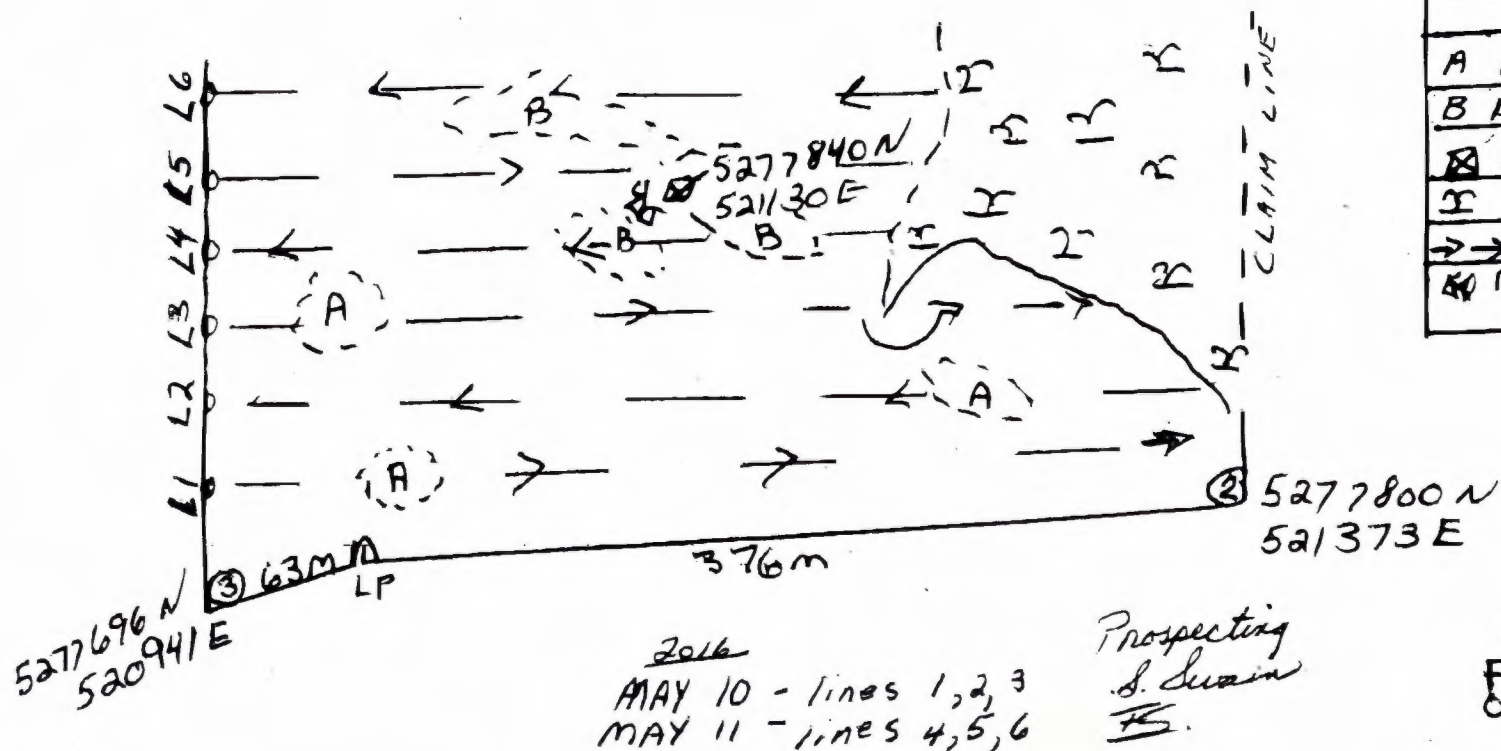
A new gold discovery to the near east made by the author in 2004 has made this claim a good prospect for gold as well as silver.

Report by

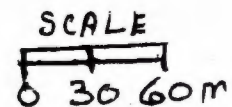
Sherry Swain

Aug. 26/2016

NICOL TWP
LARDER LAKE DIV
PROSPECTING
MAY 10, 11 / 2016
CLAIM 4227308



LEGEND	
A	ULTRAMAFICS
B	DIABASE
	SHAFT
I	SWAMP
	TRAVERSE
	MINE DUMP PILE



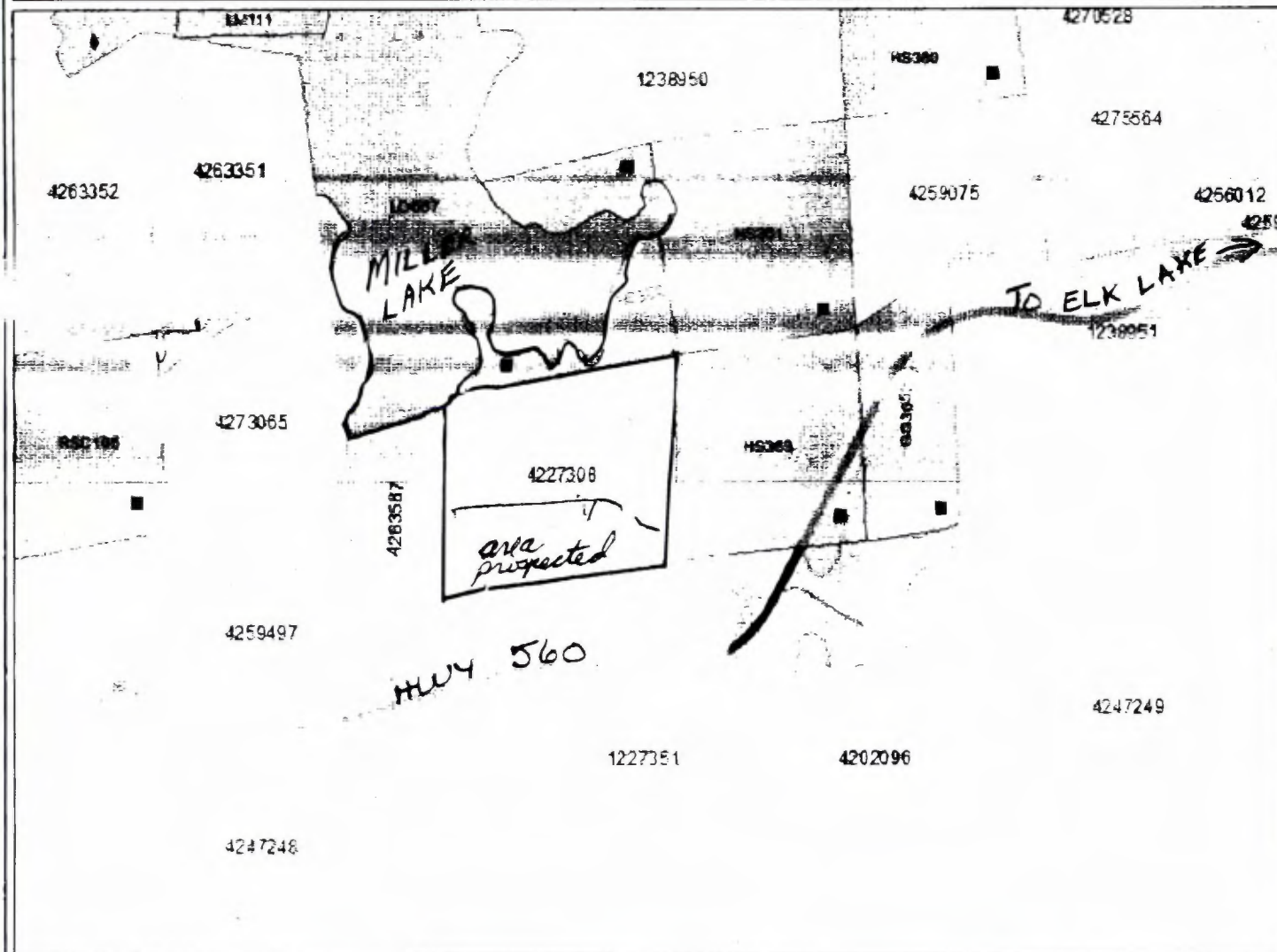
Prospecting
S. L. L. L.
S.



MINISTRY OF NORTHERN DEVELOPMENT AND MINES
CLAMaps

Nicol Twp. Larder Lake Div.

Notes:
Work done in 2016 on claim # 4227308 by Sherry Swain A48087 and Fred Swain A48088



Legend

- Admin Information: Boundary lines
- Mining Division
- Provincial Geological District
- Townships and Areas
- UTM Grid
- Geographic Grid Fabric
- Other Federal Land
- Aboriginal Reserve Land
- Ontario Reserve Land
- Administrations
- Aboriginal
- Water
- Unpatented Claim
- Patented
- Provisional
- Disposition
- Disposition Symbols
- Carry
- Disposition: Unpatented/Provisional
- Provisional Patent Mining Rights Only
- Provisional Patent Surface Rights Only
- Provisional Patent Surface and Mining Rights
- Land Use Permit
- Leasehold Patent Mining Rights Only
- Leasehold Patent Surface Rights Only
- Leasehold Patent Surface and Mining Rights
- License of Occupation Mining Use Only
- License of Occupation Surface Use Only
- License of Occupation Surface and Mining Rights
- License of Occupation Use Not Specified
- Order in Council
- Stake
- WPLA
- Geology Layers
- AMS 50m
- AMS 100m
- Drill Hole
- Mineral Occurrences

0 0.6 km

Projection: Web Mercator

The Ontario Ministry of Northern Development and Mines shall not be liable in any way for the use of, or reliance upon, this map or any information on this map. This map should not be used for: navigation, a plan of survey, routes, nor locations.

© Queen's Printer for Ontario, 2018

Imagery Copyright Notices: Ontario Ministry of Natural Resources and Forestry; NASA Landsat Program; First Base Solutions Inc.; Aéro-Photo (1961) Inc.; DigitalGlobe Inc.; U.S. Geological Survey.

© Copyright for Ontario Parcel data is held by Queen's Printer for Ontario and its licensors and may not be reproduced without permission.





MINISTRY OF NORTHERN DEVELOPMENT AND MINES
CLAMaps

Nicol Twp. Larder Lake Div.

Notes:
Work done in 2018 on claim # 4227308 by Sherry Swain A48087 and Fred Swain A48086



Legend

- Administrative Boundaries
 - Watershed
 - Resident Geographical District
 - Relationships and Areas
 - UTM Grid
 - Geographic Lat. Ref. Grid
 - Other Federal Land
- Mineral Tenure Grid
 - Ontario Tenure Grid
- Access
 - Access
 - Unpatented Claims
 - Active
 - Reclaimed
 - Pending
 - Disposition
 - Occupation
- Occupation on Symbols
 - Camp
 - Disposition Unrecovered Paving
 - Freehold Patent Mining Rights Only
 - Freehold Patent Surface Rights Only
 - Freehold Patent Surface and Mining Rights
 - Land Use Permit
 - Leasehold Patent Mining Rights Only
 - Leasehold Patent Surface Rights Only
 - Leasehold Patent Surface and Mining Rights
 - License of Occupation Mining Use Only
 - License of Occupation Surface Use Only
 - License of Occupation Surface and Mining Rights
 - License of Occupation Mining Use and Surface
 - Order in Council
 - Temp.
 - Imp. L.
- Geology Layers
 - All G. Maps
 - All G. Features
 - Drill Holes
 - Mineral Occurrences

0 9.9 km

Projection: Web Mercator

The Ontario Ministry of Northern Development and Mines shall not be liable in any way for the use of, or reliance upon, this map or any information on this map. This map should not be used for navigation, a plan of survey, routes, nor locations.

© Queen's Printer for Ontario, 2016

Imagery Copyright Notices: Ontario Ministry of Natural Resources and Forestry; NASA Landsat Program; First Base Solutions Inc.; Aero-Photo (1961) Inc.; DigitalGlobe Inc.; U.S. Geological Survey.

© Copyright for Ontario Parcel data is held by Queen's Printer for Ontario and its licensors and may not be reproduced without permission.



877-670-1555

Assessment Work
pl. of 9

Sherry Swain

Aug. 28/16

