

We are committed to providing [accessible customer service](#).
If you need accessible formats or communications supports, please [contact us](#).

Nous tenons à améliorer [l'accessibilité des services à la clientèle](#).
Si vous avez besoin de formats accessibles ou d'aide à la communication, veuillez [nous contacter](#).

**Assessment Report on Prospecting/Muckpile Sampling
Conducted on Kanichee
Temagami Gold Inc.**

**STRATHY Township
Temagami Area
Sudbury Mining District**

**UTM Zone 17
Nad83 Projection
Centered on 587755E 5217453N**

**Work Conducted on
Claims 3013125**

Work Conducted From November 2th, 2015 to March 28th, 2016

Prepared by:

Martin Ethier, MSc.

Hinterland Geoscience & Geomatics

**For:
Temagami Gold Inc.
March 28th, 2016**

TABLE OF CONTENTS

Summary	3
Property Location	3
Prospecting Summary	3
List of Personnel	6
Sample Assay Results	7

LIST OF FIGURES

Figure 1. Property Claim Map, Temagami area	4
Figure 3. Prospecting/Sample location map	5

Summary

Temagami Gold Inc. is exploring for minerals on several blocks of contiguous mining claims covering parts of six townships (Banting, Chambers, Strathy, Cassels, Briggs and Strathcona) in the historic Temagami Mining Camp (Fig.1).

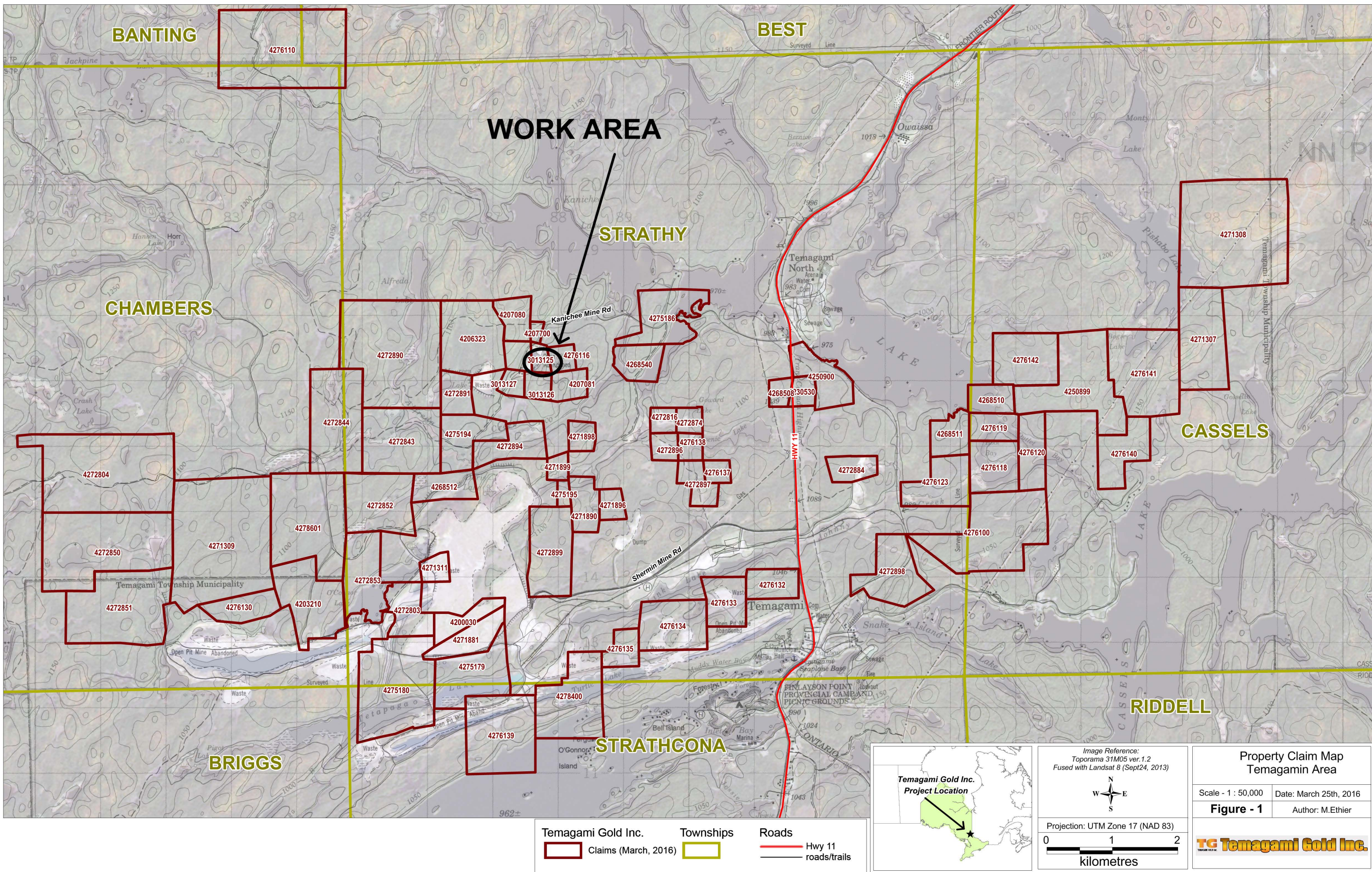
This report consists of ground-truthing the north waste piles from the Kanichee mine, in conjunction with understanding the nature of the rock types, topography and cultural features. The costs of the labor described above, plus the direct costs of planning the work, writing and producing this report are filed herein as assessment work. This work will help devise all future exploration efforts especially with the requirements for carrying exploration plans and permits. No permits were needed to perform this work.

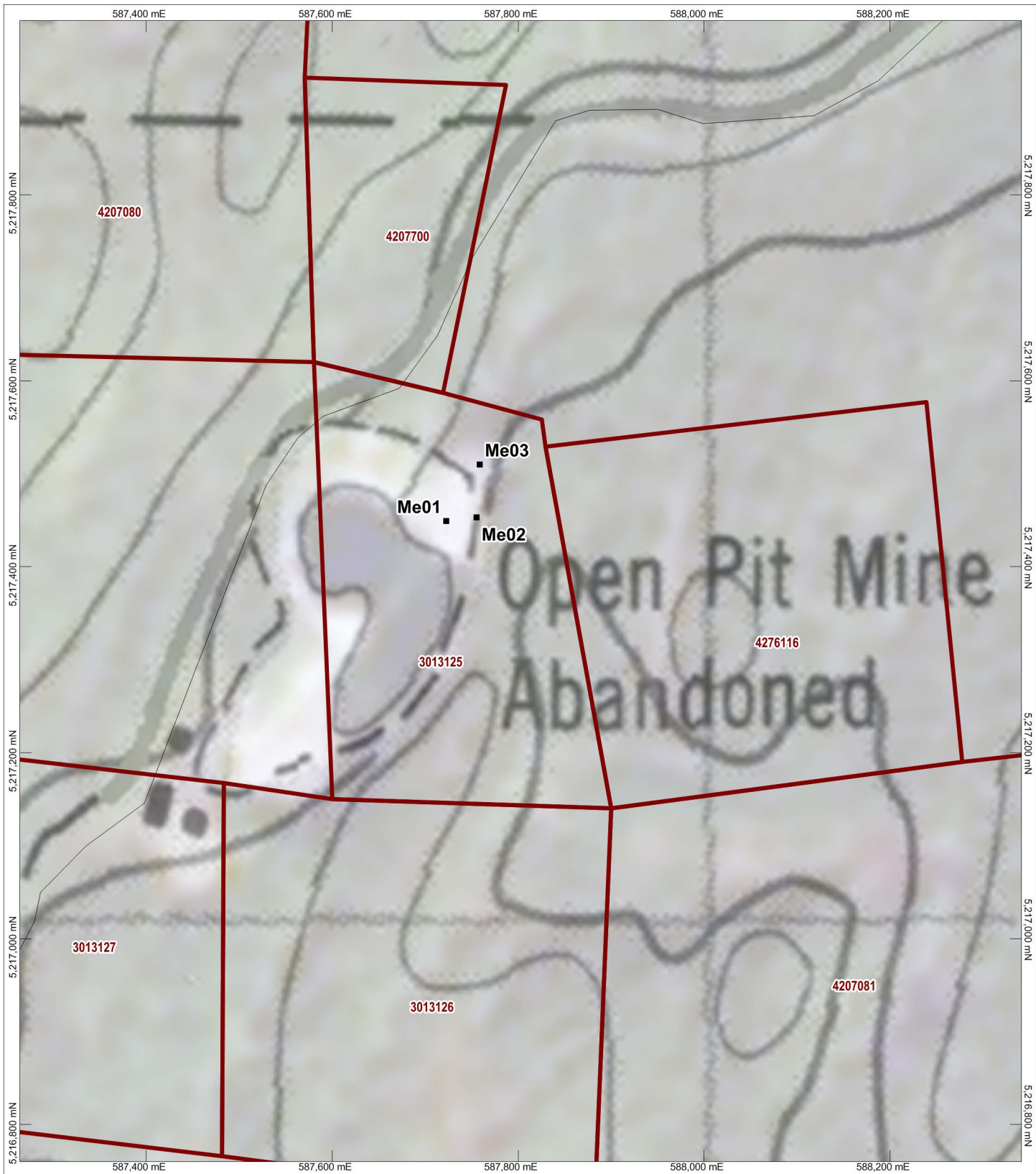
Property Location

This claim is located in Strathy Township approximately 5 km northwest of the Town of Temagami. The claims can be accessed by vehicle via Kanichee Mine Rd. west of Hwy 11, just south of Temagami North neighbourhood (Fig 1).

Prospecting Summary

On November 3rd, 2015 the author visited the property in order to find and sample representative mineralised rock from the northern waste piles. Three sample areas were selected (Fig.2).





LEGEND

- Sample Location
- ▭ Claims (March, 2016)

**Temagami Gold Inc.
Project Location**

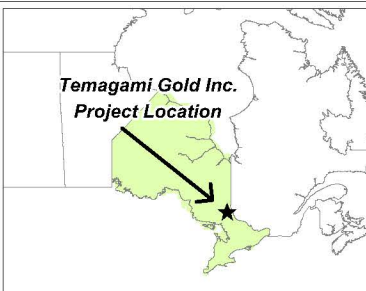
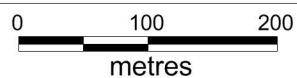


Image Reference:
Toporama 31M05 ver. 1.2
Fused with Landsat 8 (Sept24, 2013)



Projection: UTM Zone 17 (NAD 83)



Traverse Map & Access

Scale - 1 : 6,000 Date: March 22, 2016

Figure - 2 Author: M.Ethier

TC Temagami Gold Inc.

List of Personnel

Martin Ethier, M.Sc. géo.
Hinterland Geosience & Geomatics
P.O. Box 304
Haileybury ON, P0J 1K0

Temagami Gold Inc.

March 22, 2016.

Sample Assay Results

Date Assayed: March 22, 2016.

Assaying Company: Polymet Labs, Cobalt, Ontario

Assayer: Carla Johnson, B.Sc. Chemist

Analytical Type: Atomic Absorption Spectroscopy (AAS)

Sample Descriptions:

Place: Kanichee Mine Property, North Waste Pile, Strathy Twp, Temagami Ontario.

Type: Selected Muck-samples

Samples Submitted for Assay: November 5th, 2015.

Sample #	Field #	Description
341861	ME03	Semi-massive to massive sulphides (10-30%) mainly pyrrhotite, and chalcopyrite in peridotite (ultra-mafic) rocks.
341862	ME02	Disseminated sulphide s (5-10%) mainly chalcopyrite, pyrrhotite and pyrite in pyroxenite (ultra-mafic) rocks.
341863	ME01	Massive sulphides (> 50%) mainly pyrrhotite and some chalcopyrite in peridotite (ultra-mafic) rocks.

Field	UTM Nad83, z17		Assays:		
Sample #	X-Coord	Y-Coord	Sample #	Copper	Nickel
Me01	587722.4	5217449	341863	0.63%	6.78%
Me02	587755.3	5217453	341862	0.55%	1.70%
Me03	587758.4	5217510	341861	0.73%	7.32%

PolyMet Laboratories

CERTIFICATE

22706

Client: Temagami Gold Inc.

Job #: 0-239

Project:

Date: Mar 22, 2016

Rocks

Sample #	Cu ppm	Ni ppm
341861	7290	73200
341862	5540	17000
341863	6280	67800

3 Cu by AA

3 Ni by AA

Assayer: Paul Johnson