

We are committed to providing [accessible customer service](#).  
If you need accessible formats or communications supports, please [contact us](#).

Nous tenons à améliorer [l'accessibilité des services à la clientèle](#).  
Si vous avez besoin de formats accessibles ou d'aide à la communication, veuillez [nous contacter](#).



**CANADIAN EXPLORATION SERVICES LTD**

PO Box 219, 14579 Government Road, Larder Lake, Ontario, P0K 1L0, Canada  
Phone (705) 643-2345 Fax (705) 643-2191 www.cxsltd.com

---

# **TIGER GOLD EXPLORATION CORPORATION**

## **Prospecting Over the HARKER HERITAGE PROPERTY AREA 13**

### **Elliott Township, Ontario**

## TABLE OF CONTENTS

<b>1.</b>	<b>SURVEY DETAILS .....</b>	<b>3</b>
1.1	PROJECT NAME .....	3
1.2	CLIENT .....	3
1.3	LOCATION .....	3
1.4	ACCESS .....	4
1.5	SURVEY AREA .....	4
1.6	REGIONAL GEOLOGY .....	4
1.7	PREVIOUS WORK .....	4
<b>2.</b>	<b>SURVEY WORK UNDERTAKEN .....</b>	<b>5</b>
2.1	SURVEY LOG .....	5
2.2	PERSONNEL .....	5
2.3	SURVEY SPECIFICATIONS .....	5
<b>3.</b>	<b>OVERVIEW OF SURVEY RESULTS .....</b>	<b>6</b>
3.1	DAY-1 – DECEMBER 12, 2015 .....	6
3.2	DAY2 – DECEMBER 13, 2015 .....	7

## LIST OF APPENDICES

**APPENDIX A: STATEMENT OF QUALIFICATIONS**

**APPENDIX B: INSTRUMENT SPECIFICATIONS**

**APPENDIX C: LIST OF MAPS (IN MAP POCKET)**

## LIST OF TABLES AND FIGURES

Figure 1: Location of the Harker Heritage Property.....	3
Figure 2: Sample 06127 .....	6
Figure 3: Sample 06123.....	7
Figure 4: Sample 06124.....	8
Figure 5: Sample 06125.....	9
Figure 6: Sample 06126.....	10
Table 1: Survey Log.....	5

## 1. SURVEY DETAILS

### 1.1 PROJECT NAME

This project is known as the **Harker Heritage Property – Area 13**.

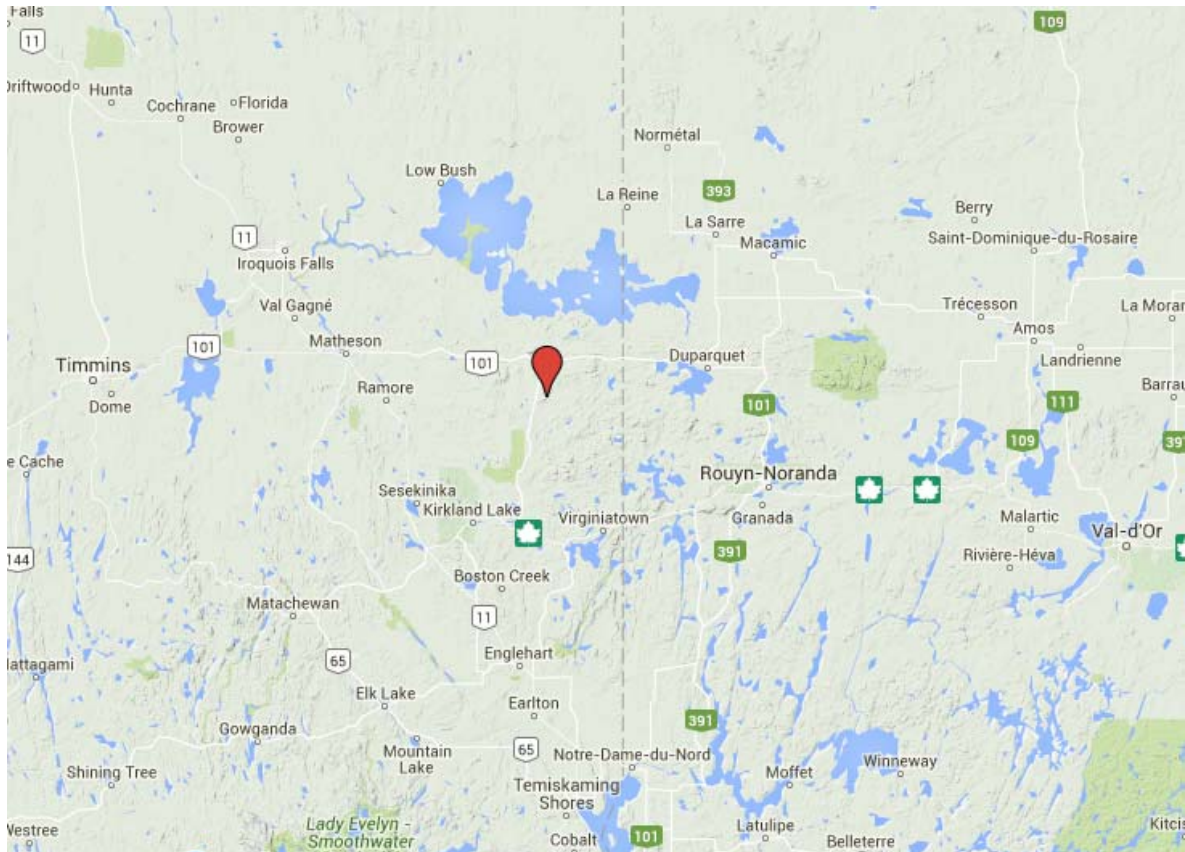
### 1.2 CLIENT

TIGER GOLD EXPLORATION CORPORATION,

103 Government Road.  
Kirkland Lake, Ontario  
P2N 1A9

### 1.3 LOCATION

The Harker Heritage Property is located approximately 50 km northeast of Kirkland Lake, Ontario. The property consists of 375 mining claims comprising of over 850 units spanning Clifford, Elliot, Harker, Holloway, Tannahill and Marriott Townships within the Larder Lake Mining Division.



***Figure 1: Location of the Harker Heritage Property***

---

## 1.4 ACCESS

Access to the property was attained with a 4x4 truck via highway 672 and highway 101. Numerous forestry access roads and trails were travelled by ATV to access the various parts of the property.

Area 13 is located within Elliott Township. Access to this area was via highway 672. Approximately 36.5 kilometers north of the intersection highway 66 the property crosses the highway. At this location the truck was parked and an ATV was used for the remainder of the access.

## 1.5 SURVEY AREA

The traversed lines were established using a GPS in conjunction with the execution of the survey. The survey area was for reconnaissance purposes and therefore randomly generated in the field based on topography and vegetation.

The mining claims traversed all fall within Elliott Township within the Larder Lake Mining Division. These claims include 4252119, 4252120, 1248883, 821894, 821895, 821896, 821899, 803604, 803790, 4259140, 738834, 738835, 738836, 738843, 738844 4225031, 4225032, 738610, 738611, 739245, 738845, 739244, 802706 and 802708.

## 1.6 REGIONAL GEOLOGY

The property is hosted in the Archean aged Blake River Group of the Abitibi sub-province. Volcanic rocks of the area are classified chemically as tholeiitic and calc-alkaline. They include a wide spectrum of rock types ranging from basalts to rhyolites. Intrusive rocks include gabbros, diorites and feldspar porphyries with scattered rare diabase dykes. Mapping in the region has identified a number of east west trending fold axis that lead to the repetition of units in a north south direction.

## 1.7 PREVIOUS WORK

The historic work found in the archives appears to reflect that done by Tiger Gold Exploration Corporation or its subsidiaries since 1984. This includes numerous grids being cut with magnetometer, VLF surveys being performed. This work also includes stripping and trenching with geological mapping. Two historic airborne magnetometer and VLF surveys were also flown in 1985 and 1986.

---

## 2. SURVEY WORK UNDERTAKEN

### 2.1 SURVEY LOG

Date	Description	Total Traverse (km)
December 12, 2015	Conduct prospecting traverse over Harker Heritage Area 13.	8.75
December 13, 2015	Conduct prospecting traverse over Harker Heritage Area 13.	4.9

**Table 1: Survey Log**

### 2.2 PERSONNEL

Claudia Moraga of Britt, Ontario performed the prospecting traverse and collected GPS waypoint data.

### 2.3 SURVEY SPECIFICATIONS

The main purpose of the prospecting was to investigate to areas of outcrop exposure for potential mineralization. Rock samples were collected from outcrops encountered during the traverses. These samples were taken for reference purposes only.

---

### 3. OVERVIEW OF SURVEY RESULTS

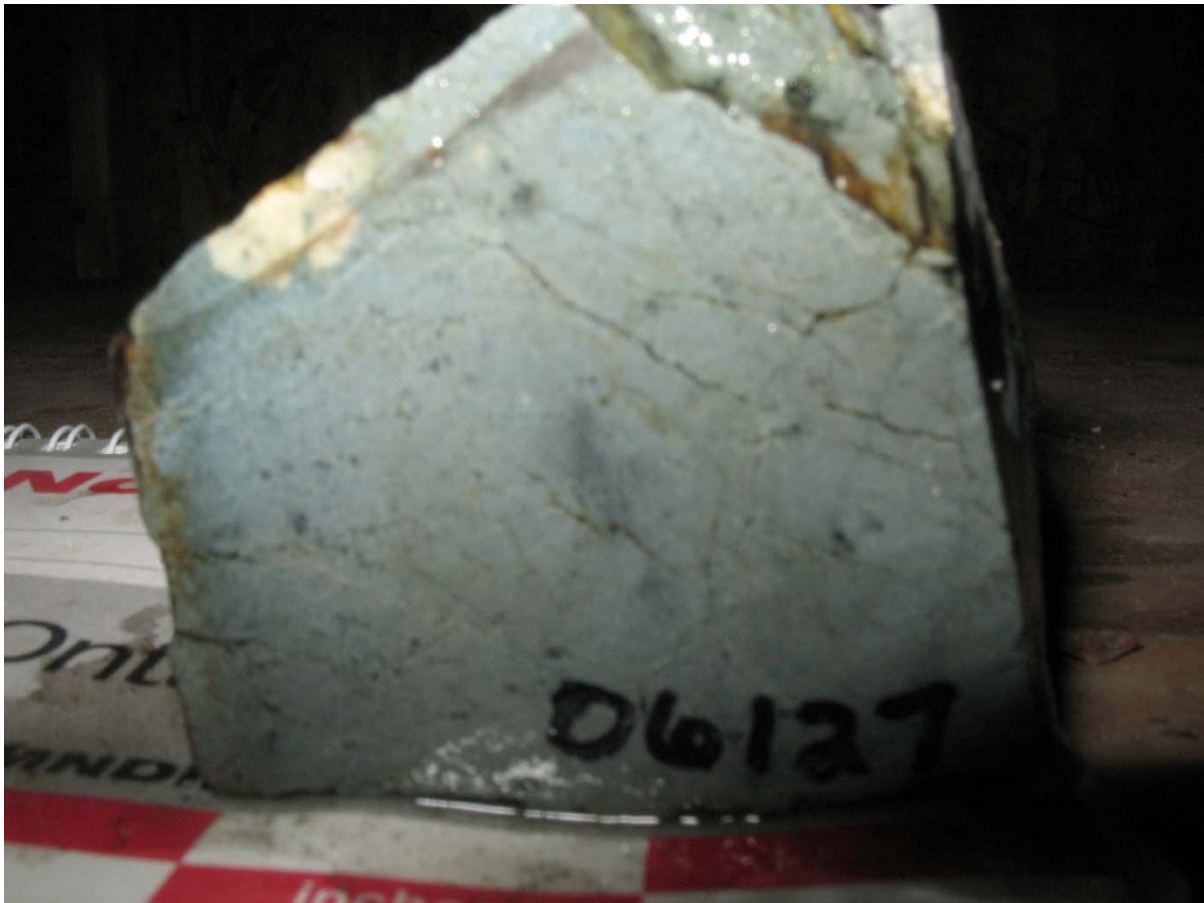
**ALL SAMPLES WERE TAKEN FOR REFERENCE PURPOSES ONLY! ALL SAMPLES WERE PRESENTED TO TIGER GOLD EXPLORATION CORPORATION.**

#### 3.1 DAY-1 – DECEMBER 12, 2015

##### Sample 06127

**NAD 83 - Zone 17N  
586604E 5364592N**

The vegetation in this area is mixed.



**Figure 2: Sample 06127**

### 3.2 DAY2 – DECEMBER 13, 2015

#### Sample 06123

NAD 83 - Zone 17N  
584608E 5365610N

The vegetation is mainly composed of birch at this location.



**Figure 3: Sample 06123**



**Sample 06124**

**NAD 83 - Zone 17N  
584640E 5365561N**

The vegetation is mainly composed of birch at this location.



**Figure 4: Sample 06124**

**Sample 06125**

**NAD 83 - Zone 17N  
584742E 5365505N**

The vegetation is mixed at this location.



**Figure 5: Sample 06125**

**Sample 06126**

**NAD 83 - Zone 17N  
584797E 5365199N**

The vegetation at this location consists of a mix of spruce and birch.



**Figure 6: Sample 06126**

---

## APPENDIX A

### STATEMENT OF QUALIFICATIONS

I, C. Jason Ploeger, hereby declare that:

1. I am a professional geophysicist with residence in Larder Lake, Ontario and am presently employed as a Geophysicist and Geophysical Manager of Canadian Exploration Services Ltd. of Larder Lake, Ontario.
2. I am a Practising Member of the Association of Professional Geoscientists, with membership number 2172.
3. I graduated with a Bachelor of Science degree in geophysics from the University of Western Ontario, in London Ontario, in 1999.
4. I have practiced my profession continuously since graduation in Africa, Bulgaria, Canada, Mexico and Mongolia.
5. I am a member of the Ontario Prospectors Association, a Director of the Northern Prospectors Association and a member of the Society of Exploration Geophysicists.
6. I do not have nor expect an interest in the properties and securities of **Tiger Gold Exploration Corporation.**
7. I am responsible for the final processing and validation of the survey results and the compilation of the presentation of this report. The statements made in this report represent my professional opinion based on my consideration of the information available to me at the time of writing this report.



C. Jason Ploeger, P.Geo., B.Sc.  
Geophysical Manager  
Canadian Exploration Services Ltd.

Larder Lake, ON  
February 19, 2016

**APPENDIX B**

**GARMIN GPS MAP 62S**



Physical & Performance:	
Unit dimensions, WxHxD:	2.4" x 6.3" x 1.4" (6.1 x 16.0 x 3.6 cm)
Display size, WxH:	1.43" x 2.15" (3.6 x 5.5 cm); 2.6" diag (6.6 cm)
Display resolution, WxH:	160 x 240 pixels
Display type:	transflective, 65-K color TFT
Weight:	9.2 oz (260.1 g) with batteries
Battery:	2 AA batteries (not included); NiMH or Lithium recommended
Battery life:	20 hours
Waterproof:	yes (IPX7)
Floats:	no

High-sensitivity receiver:	yes
Interface:	high-speed USB and NMEA 0183 compatible
<b>Maps &amp; Memory:</b>	
Basemap:	yes
Preloaded maps:	no
Ability to add maps:	yes
Built-in memory:	1.7 GB
Accepts data cards:	microSD™ card (not included)
Waypoints/favorites/locations:	2000
Routes:	200
Track log:	10,000 points, 200 saved tracks
<b>Features &amp; Benefits:</b>	
Automatic routing (turn by turn routing on roads):	yes (with optional mapping for detailed roads)
Electronic compass:	yes (tilt-compensated, 3-axis)
Touchscreen:	no
Barometric altimeter:	yes
Camera:	no
<u>Geocaching-friendly:</u>	yes (paperless)
<u>Custom maps compatible:</u>	yes
Photo navigation (navigate to geotagged photos):	yes
Outdoor GPS games:	no

Hunt/fish calendar:	yes
Sun and moon information:	yes
Tide tables:	yes
Area calculation:	yes
Custom POIs (ability to add additional points of interest):	yes
Unit-to-unit transfer (shares data wirelessly with similar units):	yes
Picture viewer:	yes
Garmin Connect™ compatible (online community where you analyze, categorize and share data):	yes

- *Specifications obtained from [www.garmin.com](http://www.garmin.com)*



Prospecting  
Harker Heritage Property  
Area 13  
Elliott Township Ontario

Tiger Gold  
Exploration  
Corporation

---

## APPENDIX C

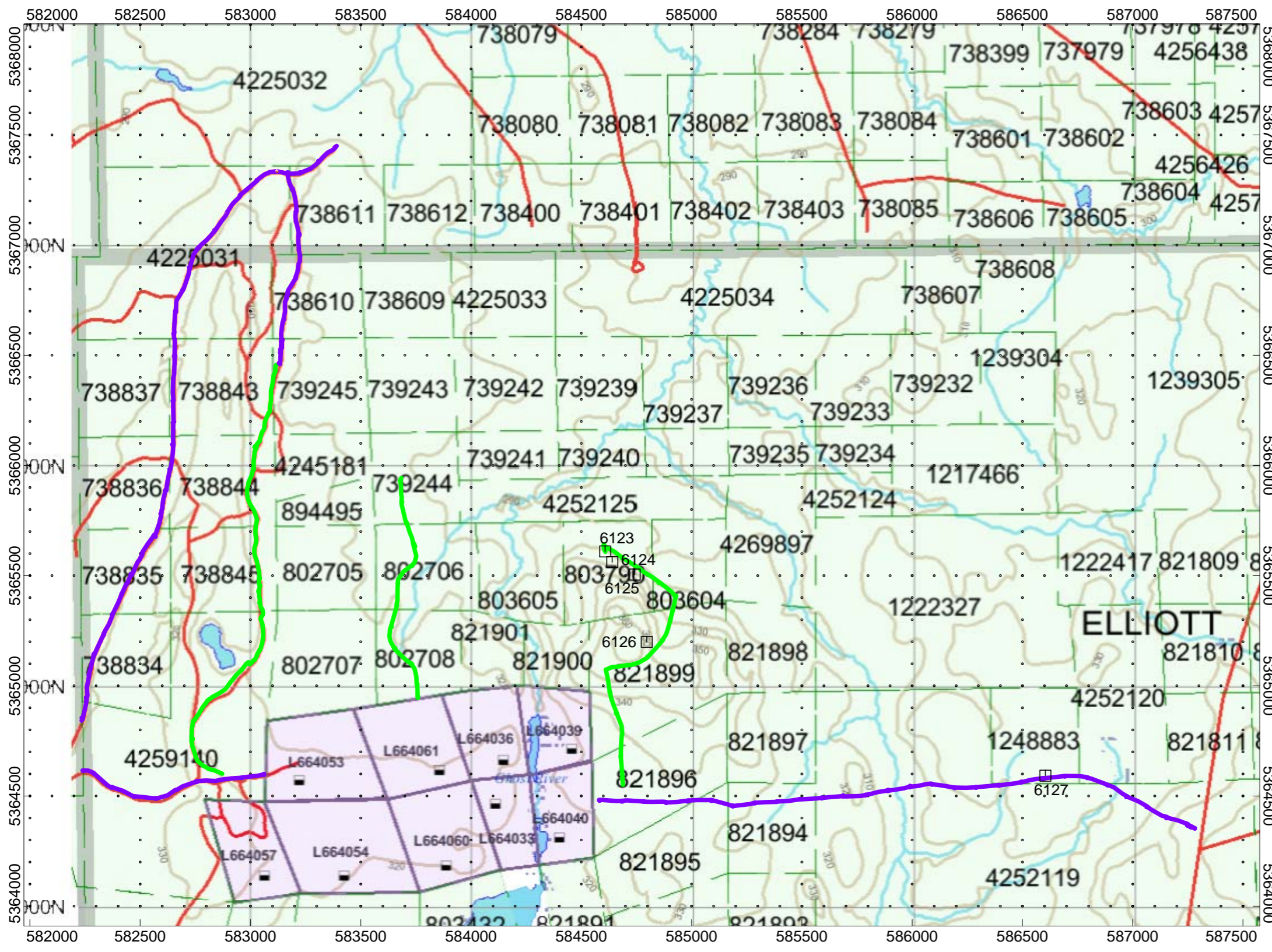
### LIST OF MAPS (IN MAP POCKET)

Posted Traverse plan maps (1:20000)

1) TIGER-HARKER HERITAGE-AREA 13-PROSPECTING

**TOTAL MAPS = 1**

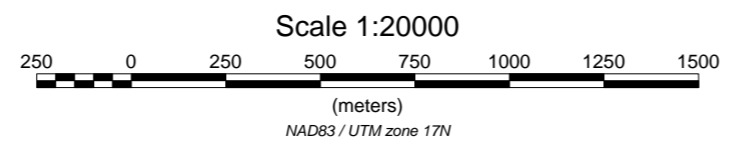




— December 12, 2015  
— December 13, 2015

**TIGER GOLD  
EXPLORATION CORPORATION**  
  
**HARKER HERITAGE PROPERTY  
Area 13  
Elliott and Harker Townships, Ontario**

PROSPECTING TRAVERSE PLAN MAP  
 December 12 and 13, 2015



Operated By: Claudia Moraga  
 Processed by: C Jason Ploeger, B.Sc.  
 Map Drawn By: C Jason Ploeger, B.Sc.  
 February 2016



Drawing: TIGER-HARKER HERITAGE-AREA 13-PROSPECTING